

# Weekly SLA Customer Report

Customer DFD Production  
 Database ID 39



=====  
 HARDDISK USAGE DFD\_PRD\_ABSWEB  
 =====

	Total disk space on C (GB)	Free disk space on C (GB)
11-4-2015	60	26
10-4-2015	60	26
9-4-2015	60	26
8-4-2015	60	26
7-4-2015	60	26
6-4-2015	60	26
5-4-2015	60	26

=====  
 HARDDISK USAGE DFD\_PRD\_BI1  
 =====

	Total disk space on C (GB)	Free disk space on C (GB)	Total disk space on E (GB)	Free disk space on E (GB)
11-4-2015	40	11	100	41
10-4-2015	40	11	100	41
9-4-2015	40	11	100	41
8-4-2015	40	11	100	41
7-4-2015	40	11	100	41
6-4-2015	40	11	100	41
5-4-2015	40	11	100	41

## Weekly SLA Customer Report

Customer     DFD Production  
 Database ID    39



=====  
 HARDDISK USAGE    DFD\_PRD\_ORACLE1  
 =====

	Total disk space on C (GB)	Free disk space on C (GB)	Total disk space on D (GB)	Free disk space on D (GB)	Total disk space on E (GB)	Free disk space on E (GB)	Total disk space on F (GB)	Free disk space on F (GB)
11-4-2015	78	54	479	357	400	300	800	762
10-4-2015	78	54	479	357	400	302	800	762
9-4-2015	78	54	479	357	400	305	800	762
8-4-2015	78	54	479	357	400	307	800	762
7-4-2015	78	54	479	357	400	310	800	762
6-4-2015	78	54	479	357	400	312	800	762
5-4-2015	78	54	479	357	400	313	800	762

=====  
 HARDDISK USAGE    DFD\_PRD\_ORACLE2  
 =====

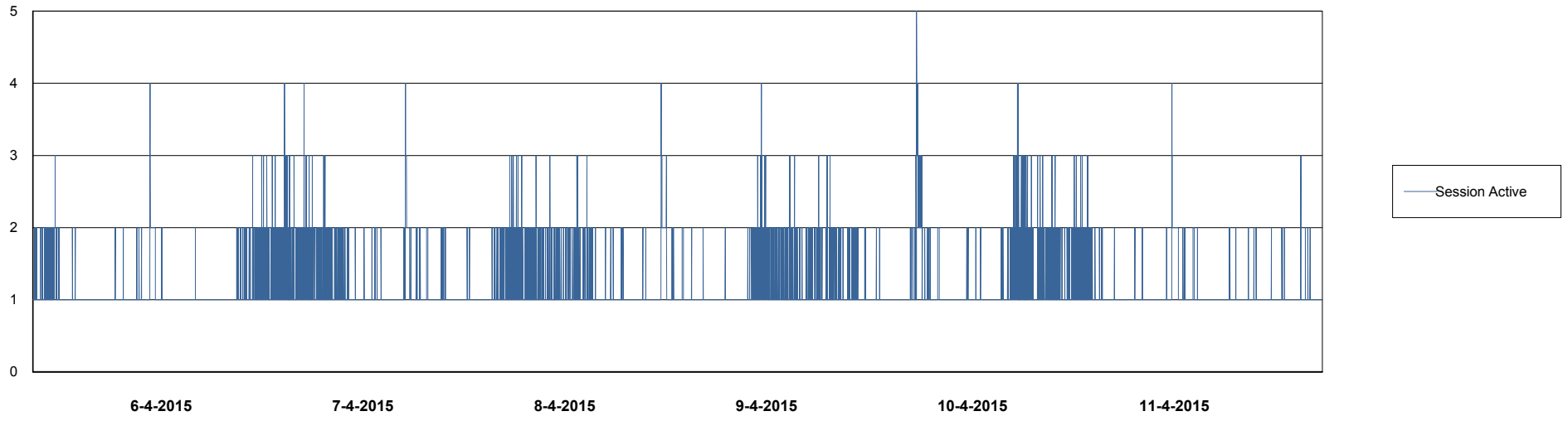
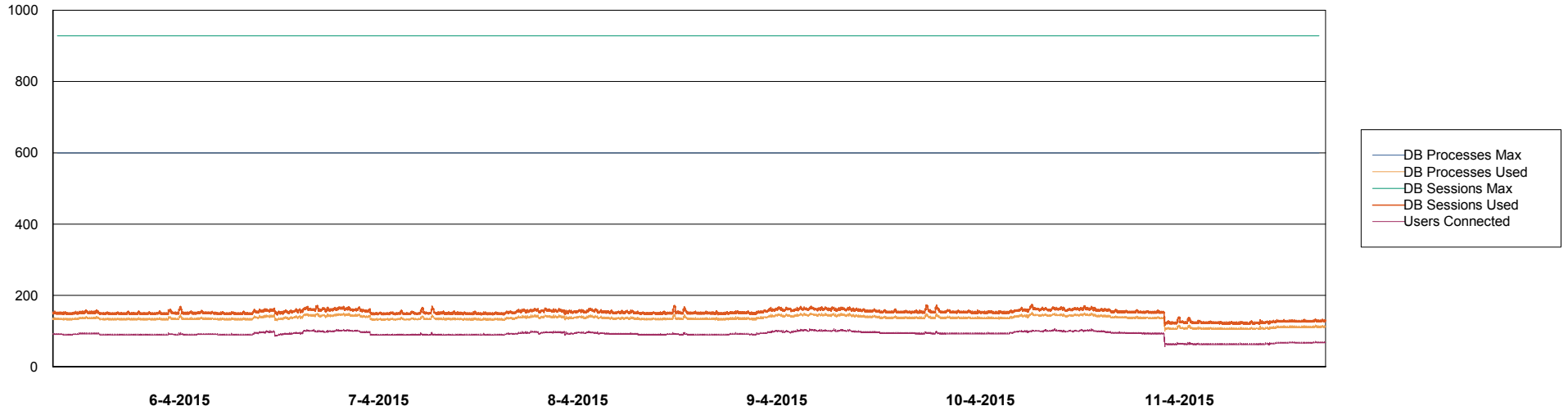
	Total disk space on C (GB)	Free disk space on C (GB)	Total disk space on D (GB)	Free disk space on D (GB)	Total disk space on E (GB)	Free disk space on E (GB)	Total disk space on F (GB)	Free disk space on F (GB)
11-4-2015	78	58	479	343	400	152	800	739
10-4-2015	78	58	479	343	400	153	800	739
9-4-2015	78	58	479	343	400	156	800	739
8-4-2015	78	58	479	343	400	159	800	739
7-4-2015	78	58	479	343	400	162	800	739
6-4-2015	78	58	479	343	400	163	800	739
5-4-2015	78	58	479	343	400	164	800	739

# Weekly SLA Customer Report

Customer DFD Production  
Database ID 39



DATABASE PERFORMANCE DFDDB\_Production

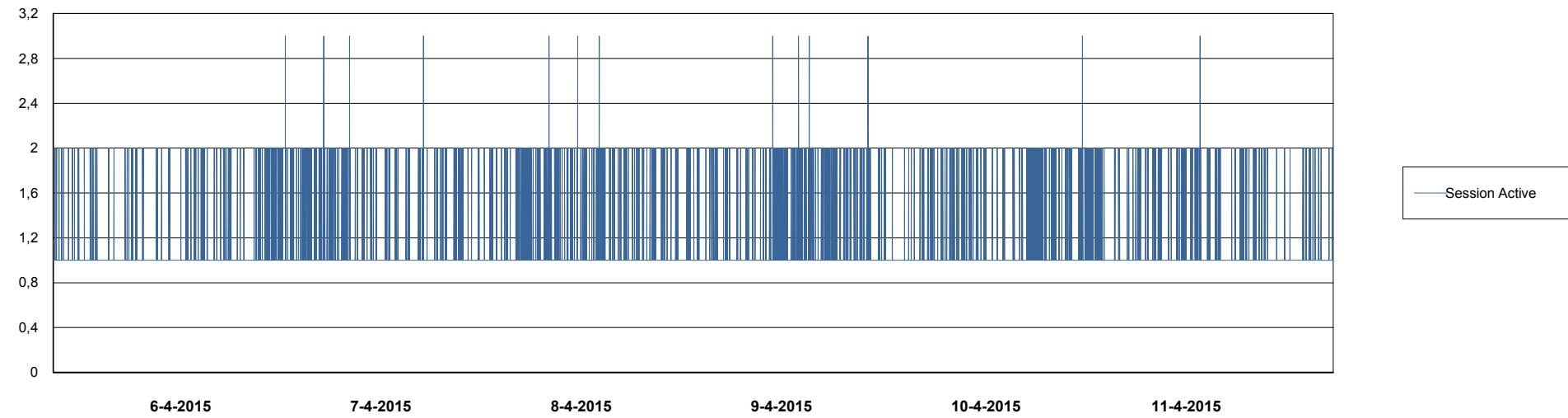
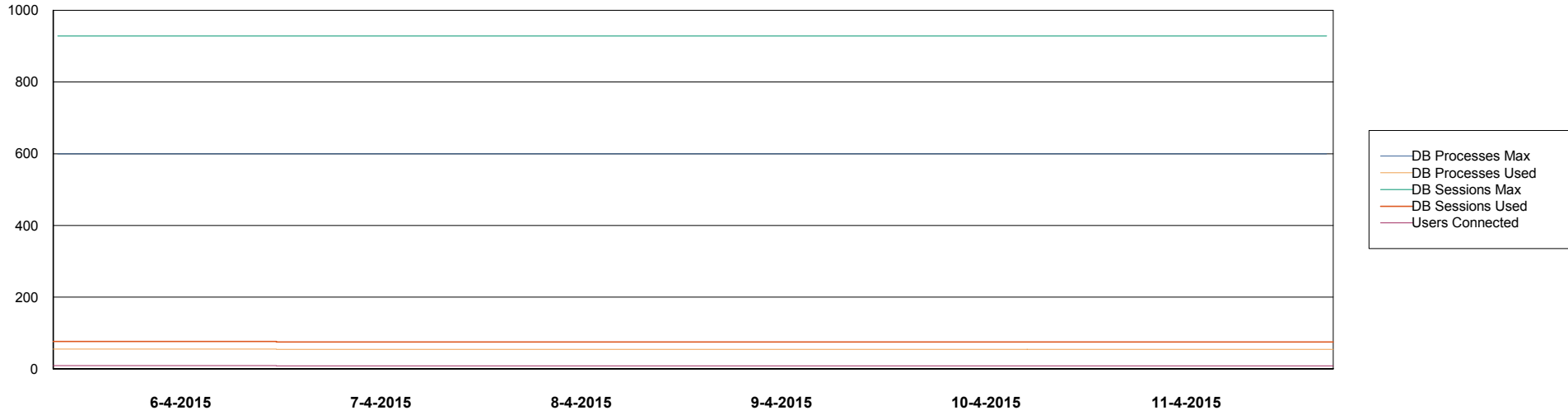


# Weekly SLA Customer Report

Customer DFD Production  
Database ID 39



DATABASE PERFORMANCE DFDDB\_Standby

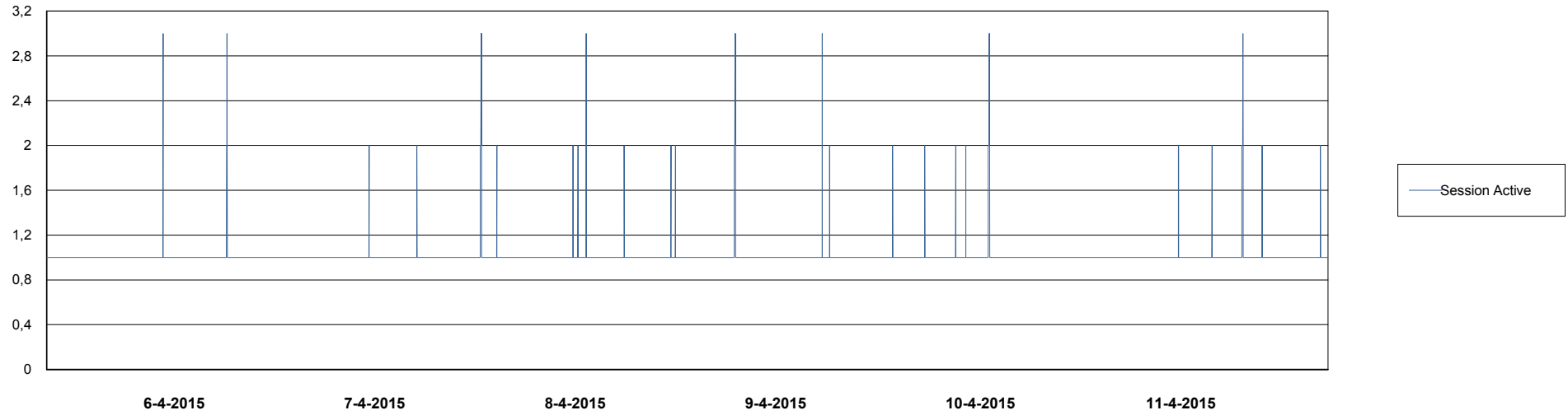
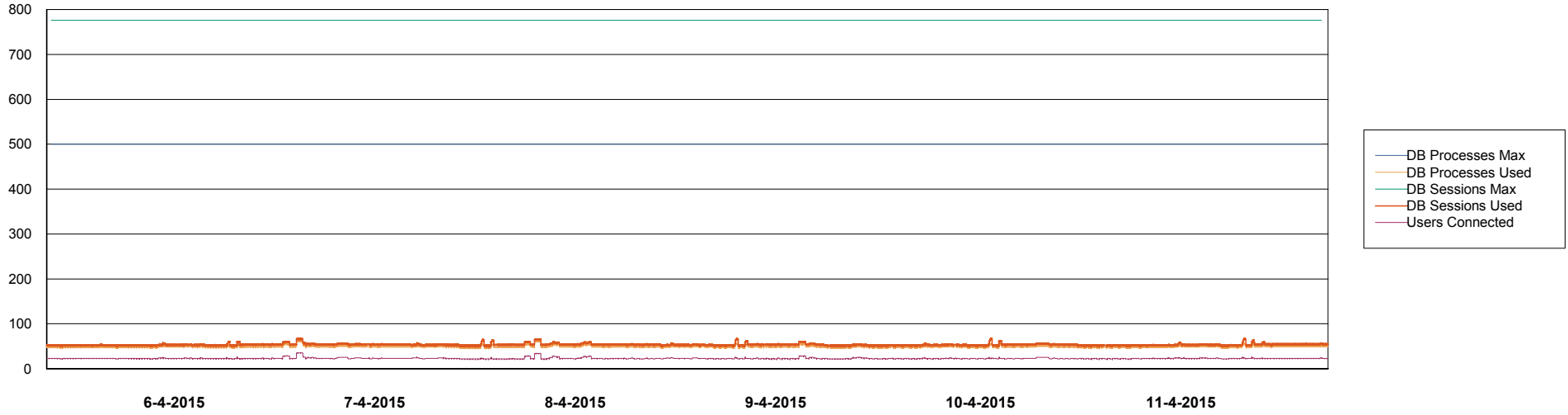


# Weekly SLA Customer Report

Customer DFD Production  
Database ID 39



DATABASE PERFORMANCE DFDDDBI\_Production



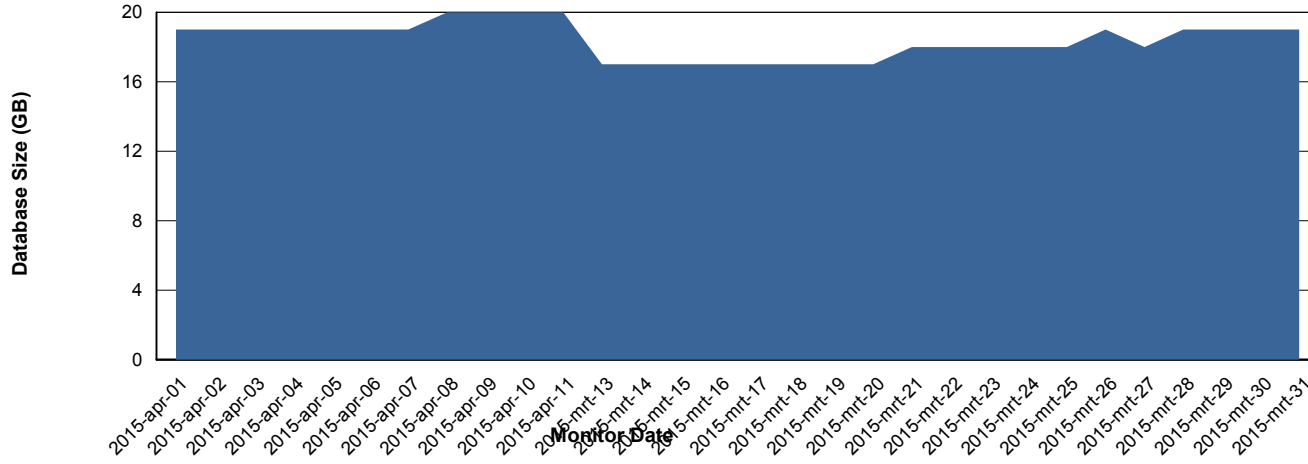
# Weekly SLA Customer Report

Customer DFD Production  
Database ID 39



=====  
DATABASE SIZE DFDDDB\_Production  
=====

## Database growth over last month



# Weekly SLA Customer Report

Customer DFD Production  
 Database ID 39



=====  
 DATABASE TABLESPACES DFDDDB\_Production  
 =====

TOTAL DATABASE SIZE PER TABLESPACE

Date	Tablespace Name	Filesize (Gb)	Usedsize (Gb)	Percentage free
11-4-2015	ABSDATA	10	7	30
	INDX	16	11	31
10-4-2015	ABSDATA	10	7	30
	INDX	16	11	31
9-4-2015	ABSDATA	10	7	30
	INDX	16	11	31
8-4-2015	ABSDATA	10	7	30
	INDX	16	11	31
7-4-2015	ABSDATA	10	7	30
	INDX	16	11	31
6-4-2015	ABSDATA	10	7	30
	INDX	16	11	31
5-4-2015	ABSDATA	10	7	30
	INDX	16	11	31

# Weekly SLA Customer Report

Customer DFD Production  
 Database ID 39



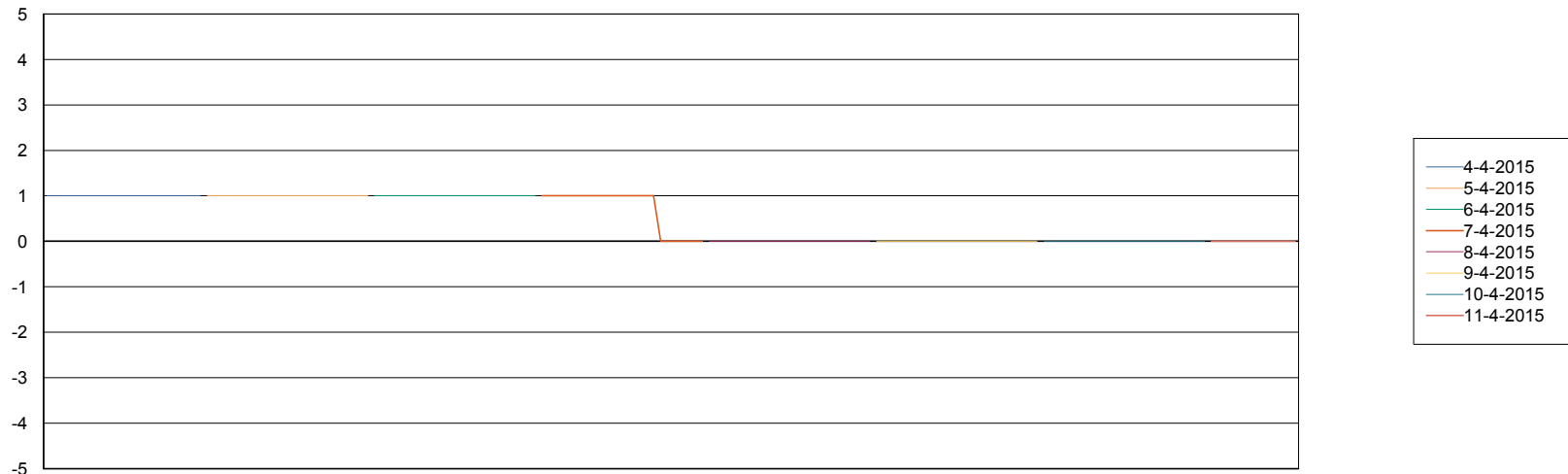
=====  
 DATABASE TABLESPACES DFDDDBBI\_Production  
 =====

TOTAL DATABASE SIZE PER TABLESPACE

Date	Tablespace Name	Filesize (Gb)	Usedsize (Gb)	Percentage free
11-4-2015	ABSDATA	3	2	33
	INDX	4	3	25
10-4-2015	ABSDATA	3	2	33
	INDX	4	3	25
9-4-2015	ABSDATA	3	2	33
	INDX	4	3	25
8-4-2015	ABSDATA	3	2	33
	INDX	4	3	25
7-4-2015	ABSDATA	3	2	33
	INDX	4	3	25
6-4-2015	ABSDATA	3	2	33
	INDX	4	3	25
5-4-2015	ABSDATA	3	2	33
	INDX	4	3	25

=====  
 STANDBY DATABASE HEALTH DFD Production  
 =====

Recovery lag for last 7 days



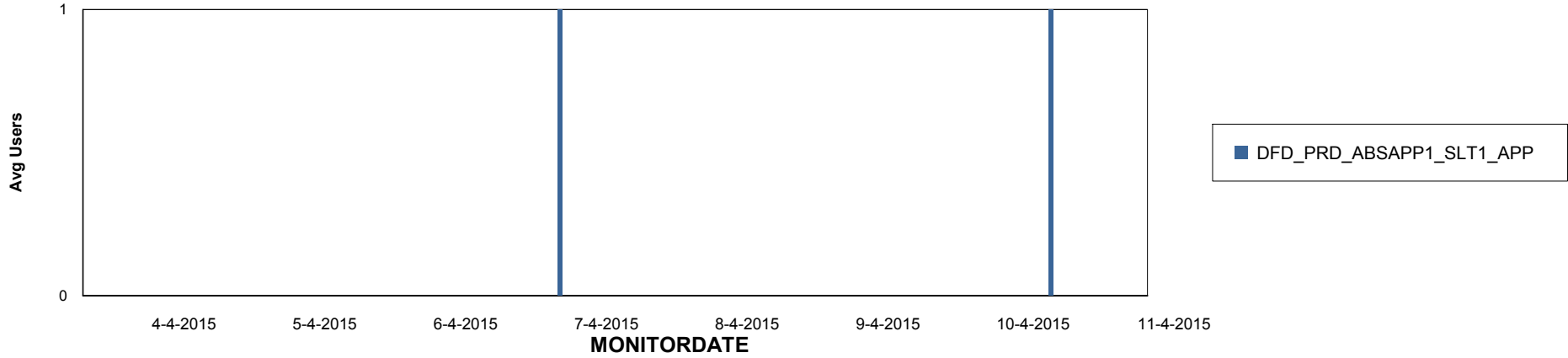
# Weekly SLA Customer Report

Customer DFD Production  
Database ID 39

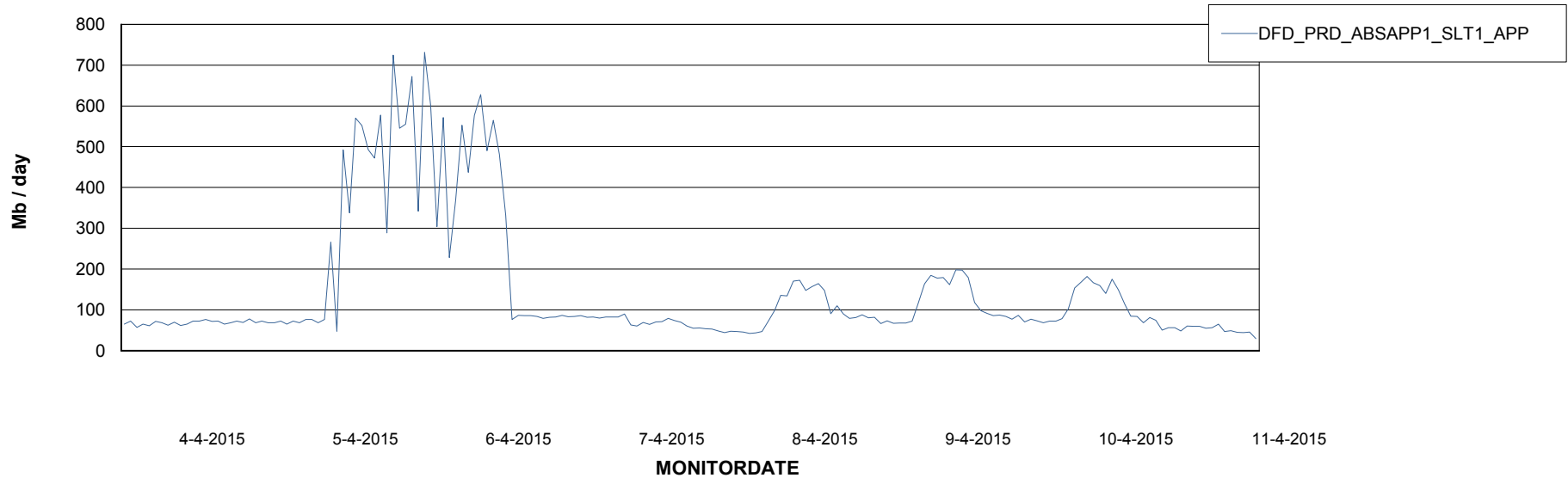


=====  
ABSolute Application Server Services  
=====

## Disaster per ABS Server



## Avg memory used per ABS Server Service



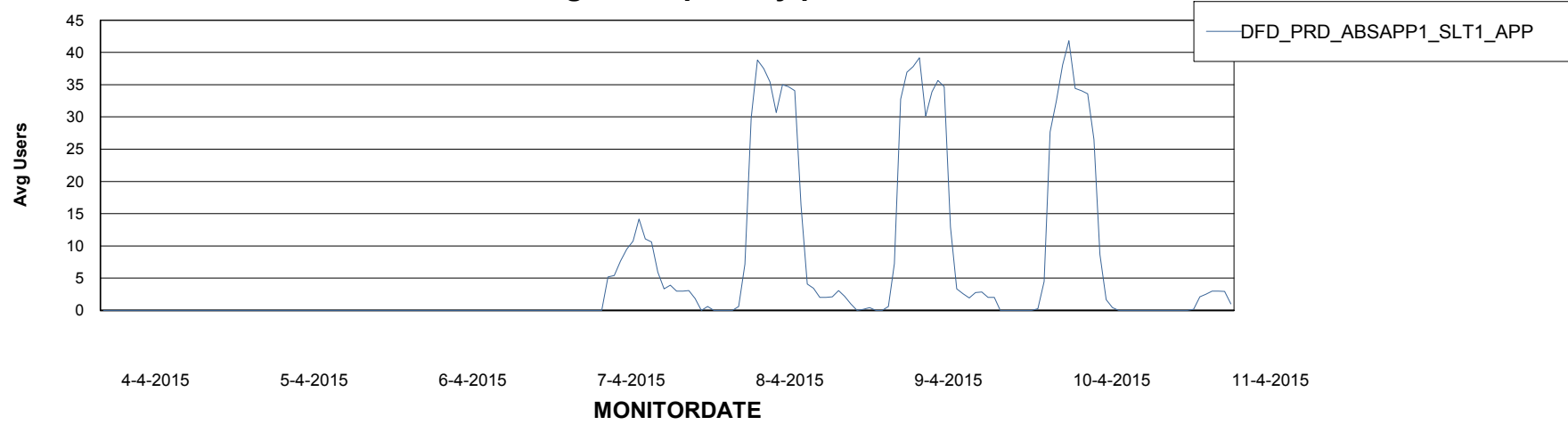
# Weekly SLA Customer Report

Customer DFD Production  
Database ID 39



=====  
ABSolute Application Server Services  
=====

### Avg users per day per ABS server



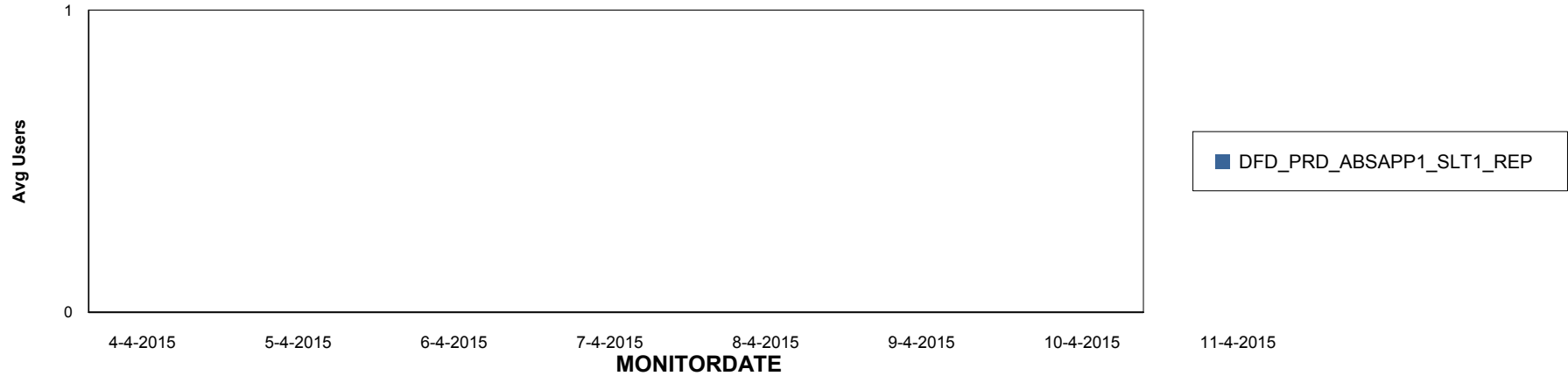
# Weekly SLA Customer Report

Customer DFD Production  
Database ID 39

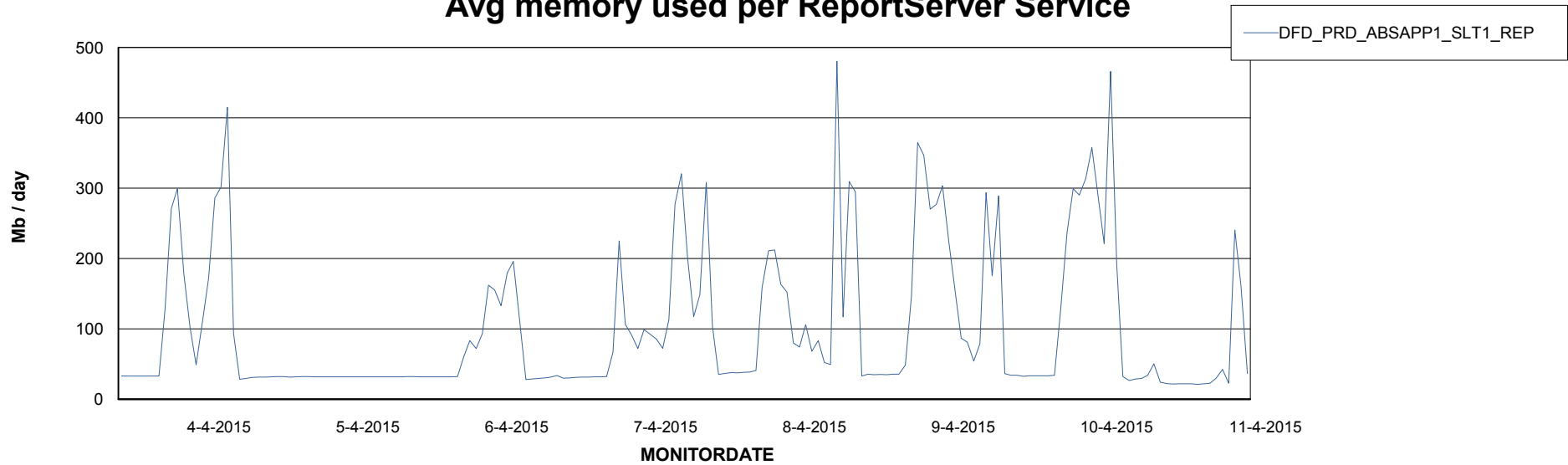


=====  
ABSolute Application ReportServer Services  
=====

## Disaster per ReportServer



## Avg memory used per ReportServer Service



# Weekly SLA Customer Report

Customer DFD Production  
Database ID 39



## Disaster per ABS component

