

## Weekly SLA Customer Report

Customer BOH\_Production  
 Database ID 55



=====  
 HARDDISK USAGE BOH\_PRD\_ORACLE1  
 =====

	Total disk space on C (GB)	Free disk space on C (GB)	Total disk space on D (GB)	Free disk space on D (GB)	Total disk space on E (GB)	Free disk space on E (GB)
11-4-2015	130	49	100	59	170	38
10-4-2015	130	49	100	59	170	38
9-4-2015	130	49	100	59	170	39
8-4-2015	130	49	100	59	170	40
7-4-2015	130	49	100	59	170	41
6-4-2015	130	49	100	59	170	34
5-4-2015	130	49	100	59	170	25

=====  
 HARDDISK USAGE BOH\_PRD\_ORACLE2  
 =====

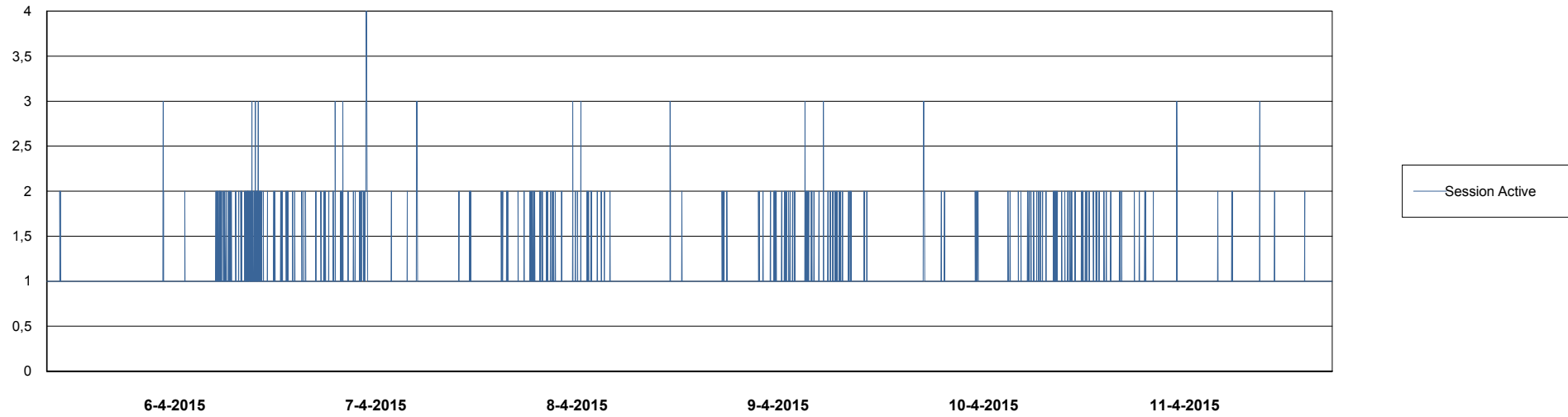
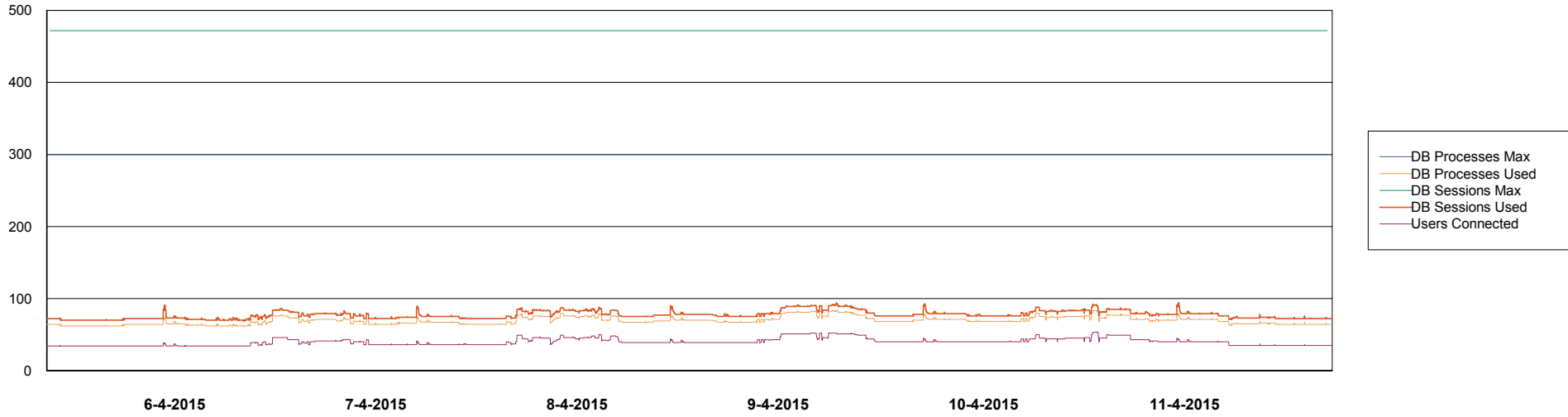
	Total disk space on C (GB)	Free disk space on C (GB)	Total disk space on D (GB)	Free disk space on D (GB)	Total disk space on E (GB)	Free disk space on E (GB)
11-4-2015	67	7	227	183	329	262
10-4-2015	67	7	227	183	329	263
9-4-2015	67	7	227	183	329	264
8-4-2015	67	7	227	183	329	265
7-4-2015	67	7	227	183	329	266
6-4-2015	67	7	227	183	329	233
5-4-2015	67	7	227	183	329	188

# Weekly SLA Customer Report

Customer BOH\_Production  
Database ID 55



DATABASE PERFORMANCE BOHDB\_Production

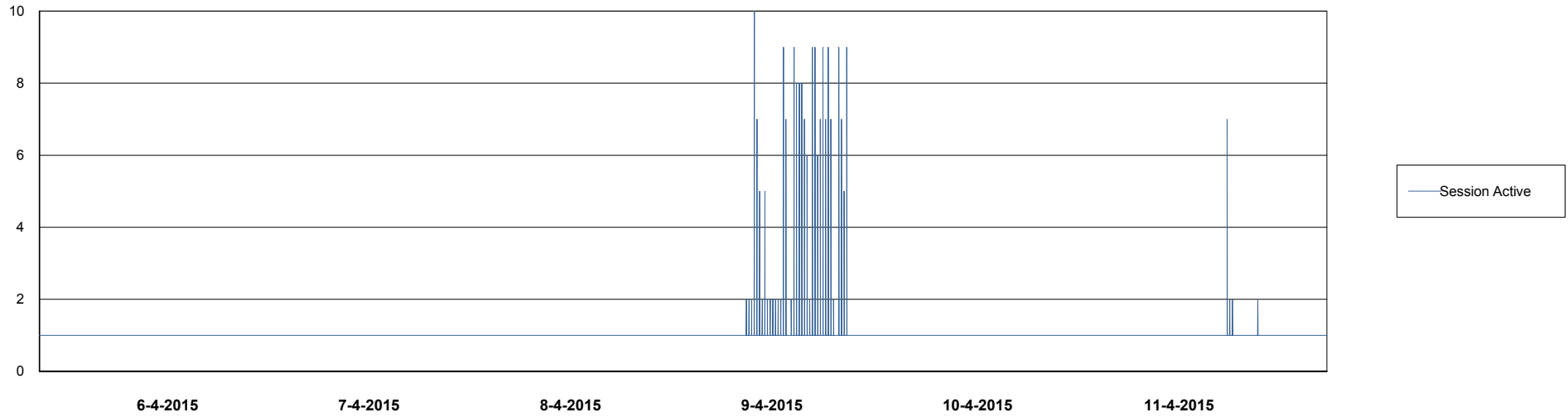
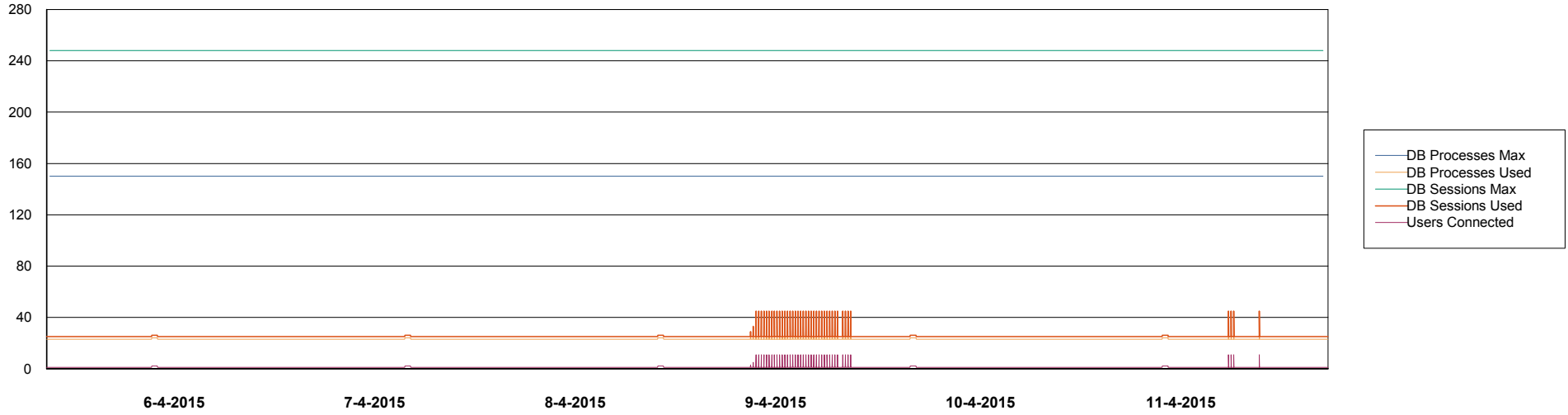


# Weekly SLA Customer Report

Customer BOH\_Production  
Database ID 55



DATABASE PERFORMANCE BOHDB\_Standby



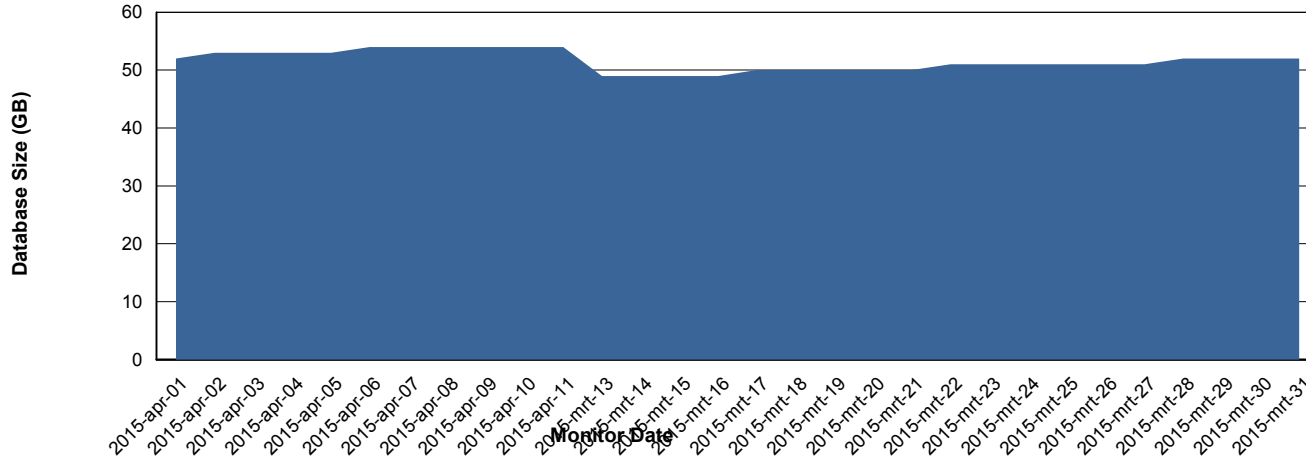
# Weekly SLA Customer Report

Customer BOH\_Production  
 Database ID 55



=====  
 DATABASE SIZE BOHDB\_Production  
 =====

## Database growth over last month



=====  
 DATABASE TABLESPACES BOHDB\_Production  
 =====

### TOTAL DATABASE SIZE PER TABLESPACE

Date	Tablespace Name	Filesize (Gb)	Usedsize (Gb)	Percentage free
11-4-2015	ABSDATA	28	21	25
	INDX	40	32	20
10-4-2015	ABSDATA	28	21	25
	INDX	40	32	20
9-4-2015	ABSDATA	28	21	25
	INDX	40	32	20
8-4-2015	ABSDATA	28	21	25
	INDX	40	32	20
7-4-2015	ABSDATA	28	21	25
	INDX	40	32	20
6-4-2015	ABSDATA	28	20	29
	INDX	40	32	20
5-4-2015	ABSDATA	28	20	29
	INDX	40	32	20

# Weekly SLA Customer Report

Customer BOH\_Production  
Database ID 55



=====  
STANDBY DATABASE HEALTH BOH\_Production  
=====

### Recovery lag for last 7 days

