

# Weekly SLA Customer Report

Customer      BCH Production  
 Database ID    28



=====  
 HARDDISK USAGE    BCH\_PRD\_ORCDB1  
 =====

	Total disk space on C (GB)	Free disk space on C (GB)	Total disk space on D (GB)	Free disk space on D (GB)
11-4-2015	278	144	278	102
10-4-2015	278	146	278	99
9-4-2015	278	146	278	91
8-4-2015	278	146	278	94
7-4-2015	278	146	278	97
6-4-2015	278	146	278	99
5-4-2015	278	146	278	101

=====  
 HARDDISK USAGE    BCH\_PRD\_ORCDB2  
 =====

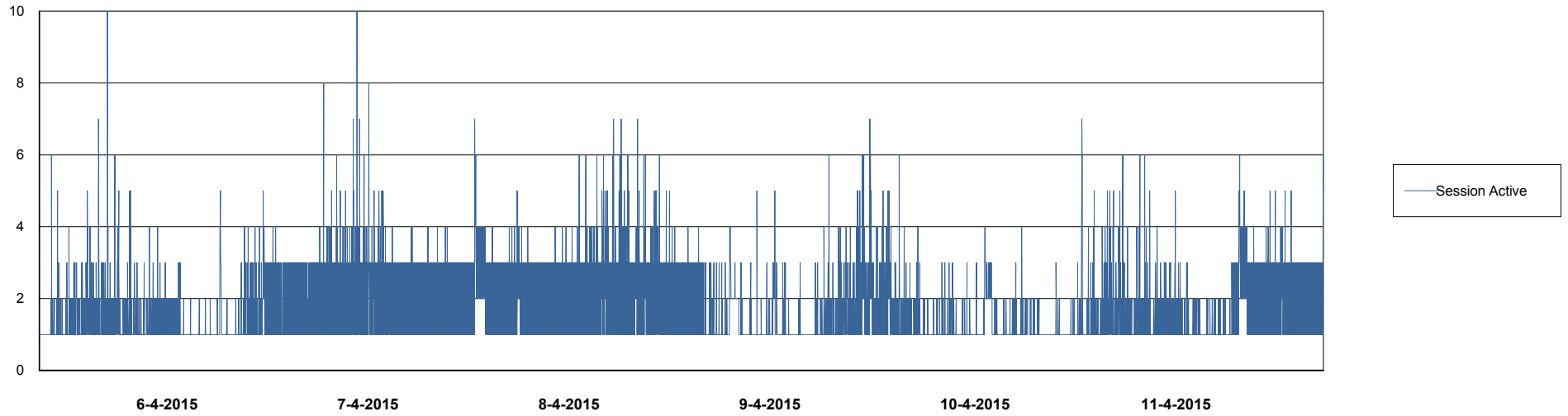
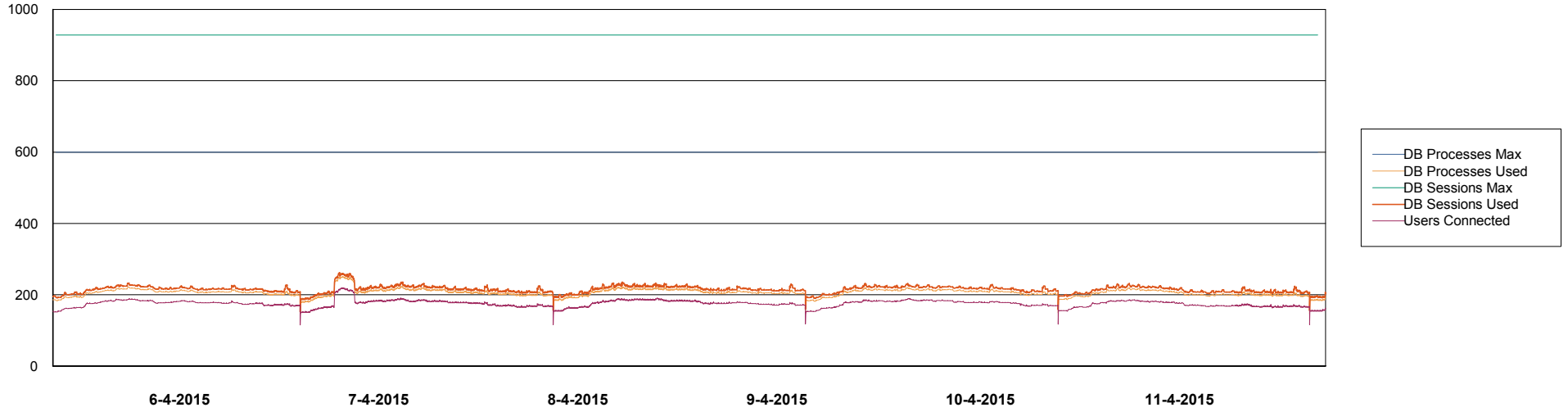
	Total disk space on C (GB)	Free disk space on C (GB)	Total disk space on D (GB)	Free disk space on D (GB)
11-4-2015	278	168	278	99
10-4-2015	278	168	278	96
9-4-2015	278	168	278	88
8-4-2015	278	168	278	91
7-4-2015	278	168	278	94
6-4-2015	278	169	278	96
5-4-2015	278	169	278	98

# Weekly SLA Customer Report

Customer BCH Production  
Database ID 28



DATABASE PERFORMANCE BCHDB\_Production

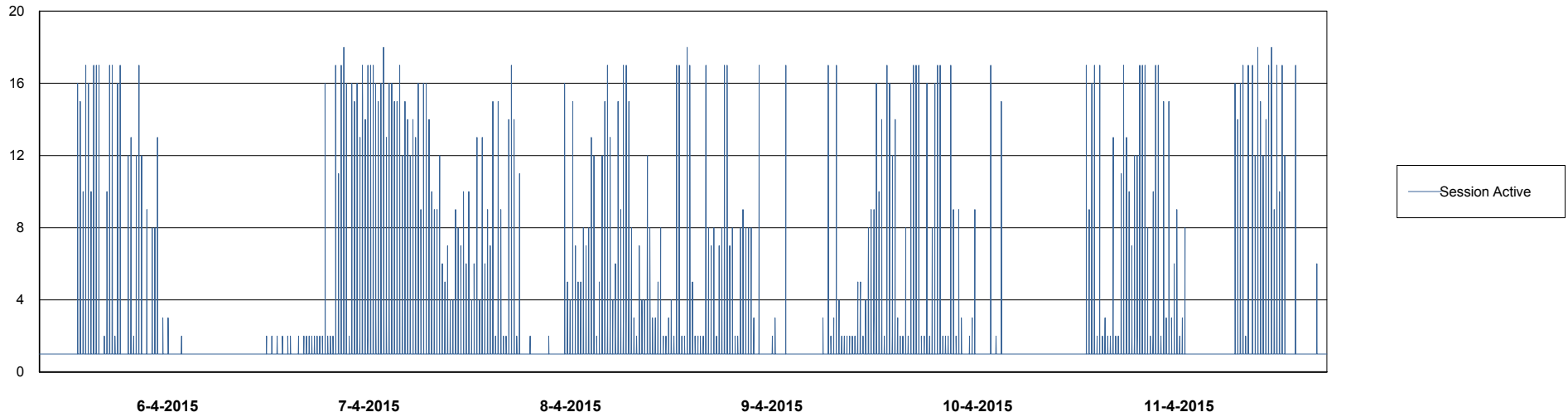
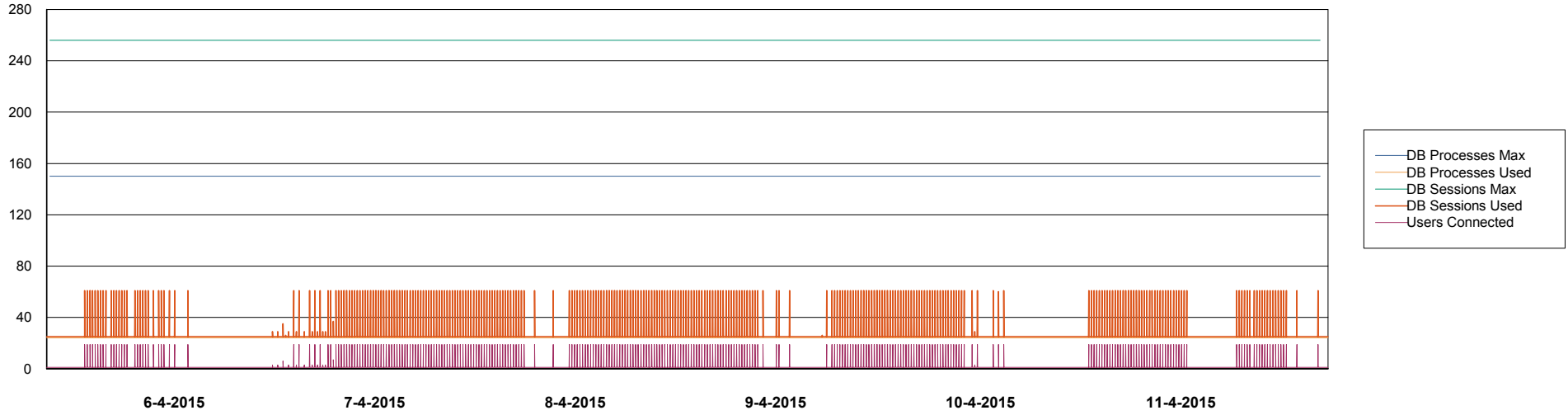


# Weekly SLA Customer Report

Customer BCH Production  
Database ID 28



## DATABASE PERFORMANCE BCHDB\_Standby



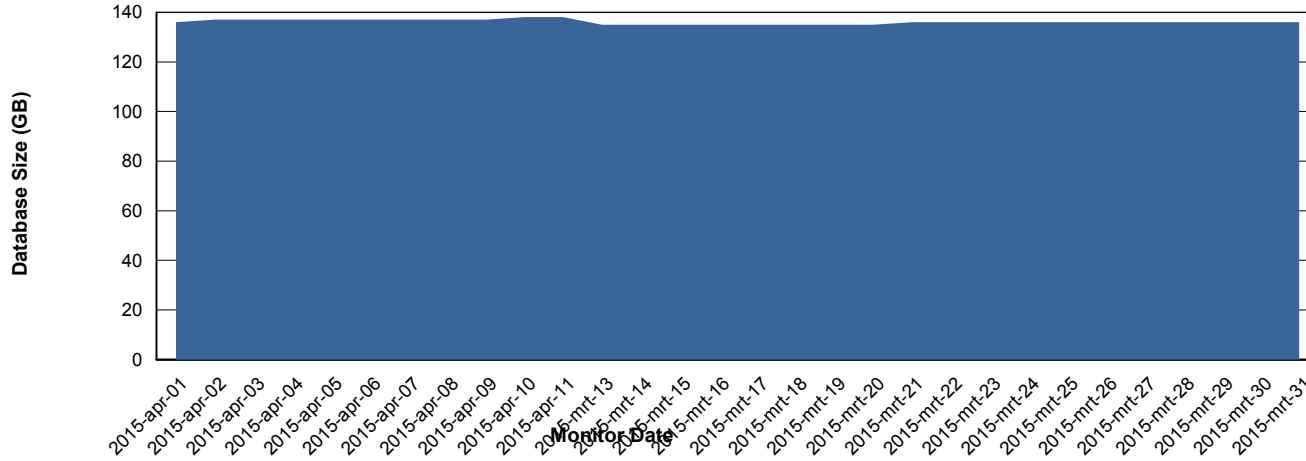
# Weekly SLA Customer Report

Customer BCH Production  
 Database ID 28



=====  
 DATABASE SIZE BCHDB\_Production  
 =====

## Database growth over last month



=====  
 DATABASE TABLESPACES BCHDB\_Production  
 =====

### TOTAL DATABASE SIZE PER TABLESPACE

Date	Tablespace Name	Filesize (Gb)	Usedsize (Gb)	Percentage free
11-4-2015	ABSDATA	42	25	40
	INDX	138	110	20
10-4-2015	ABSDATA	42	25	40
	INDX	138	110	20
9-4-2015	ABSDATA	42	25	40
	INDX	138	110	20
8-4-2015	ABSDATA	42	25	40
	INDX	138	110	20
7-4-2015	ABSDATA	42	25	40
	INDX	138	110	20
6-4-2015	ABSDATA	42	25	40
	INDX	138	109	21
5-4-2015	ABSDATA	42	25	40
	INDX	138	109	21

# Weekly SLA Customer Report

Customer BCH Production  
Database ID 28



=====  
STANDBY DATABASE HEALTH BCH Production  
=====

### Recovery lag for last 7 days

