

# Weekly SLA Customer Report

---

Customer      WBL\_Production  
Database ID    40

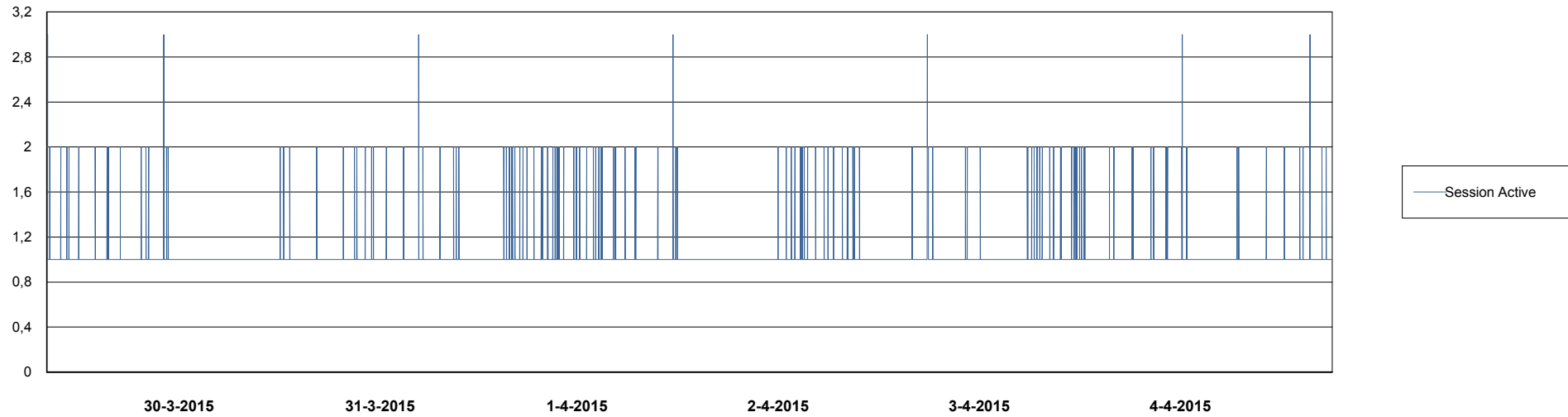
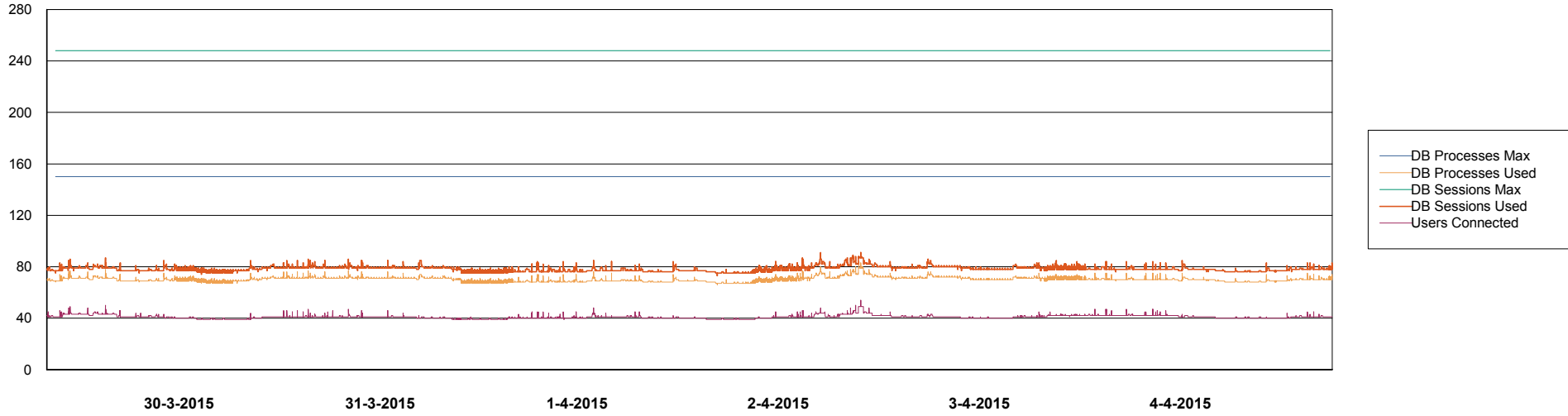


# Weekly SLA Customer Report

Customer WBL\_Production  
Database ID 40



## DATABASE PERFORMANCE WBLDB\_Production

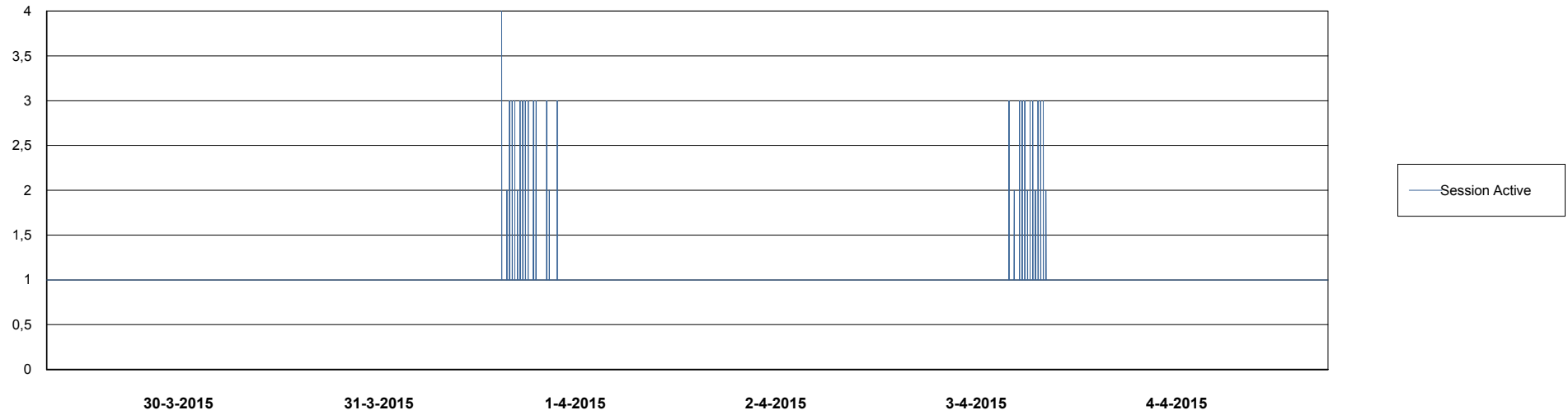
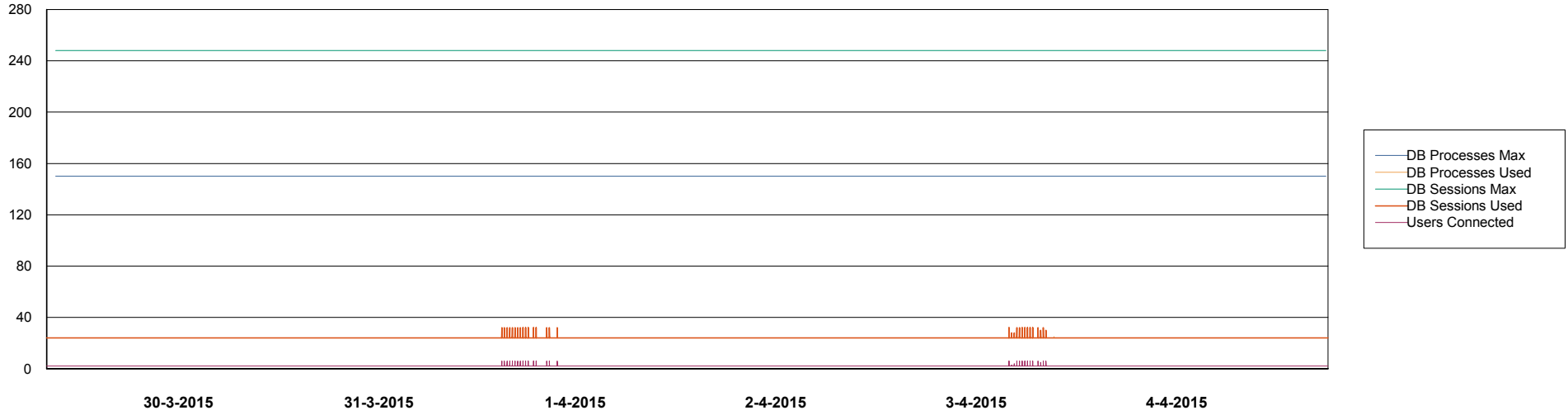


# Weekly SLA Customer Report

Customer WBL\_Production  
Database ID 40



DATABASE PERFORMANCE WBLDB\_Standby



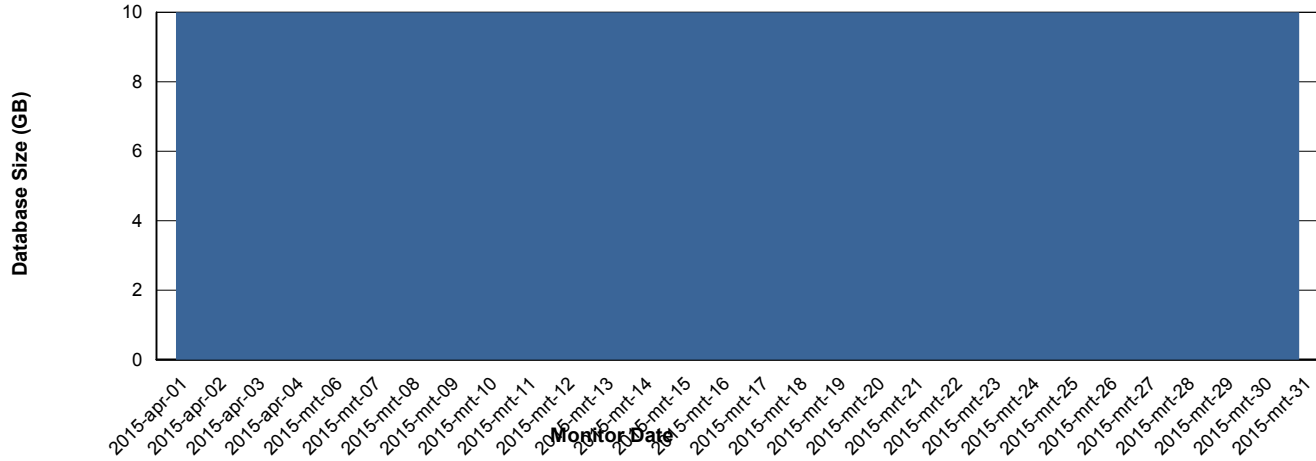
# Weekly SLA Customer Report

Customer WBL\_Production  
 Database ID 40



=====  
 DATABASE SIZE WBLDB\_Production  
 =====

## Database growth over last month



=====  
 DATABASE TABLESPACES WBLDB\_Production  
 =====

### TOTAL DATABASE SIZE PER TABLESPACE

| Date      | Tablespace Name | Filesize (Gb) | Usedsize (Gb) | Percentage free |
|-----------|-----------------|---------------|---------------|-----------------|
| 4-4-2015  | ABSDATA         | 6             | 4             | 33              |
|           | INDX            | 5             | 4             | 20              |
| 3-4-2015  | ABSDATA         | 6             | 4             | 33              |
|           | INDX            | 5             | 4             | 20              |
| 2-4-2015  | ABSDATA         | 6             | 4             | 33              |
|           | INDX            | 5             | 4             | 20              |
| 1-4-2015  | ABSDATA         | 6             | 4             | 33              |
|           | INDX            | 5             | 4             | 20              |
| 31-3-2015 | ABSDATA         | 6             | 4             | 33              |
|           | INDX            | 5             | 4             | 20              |
| 30-3-2015 | ABSDATA         | 6             | 4             | 33              |
|           | INDX            | 5             | 4             | 20              |
| 29-3-2015 | ABSDATA         | 6             | 4             | 33              |
|           | INDX            | 5             | 4             | 20              |

# Weekly SLA Customer Report

Customer WBL\_Production  
Database ID 40



=====  
STANDBY DATABASE HEALTH WBL\_Production  
=====

### Recovery lag for last 7 days

