

## Weekly SLA Customer Report

Customer RFL\_Production  
 Database ID 36



=====  
 HARDDISK USAGE RFL\_PRD\_ORACLE1  
 =====

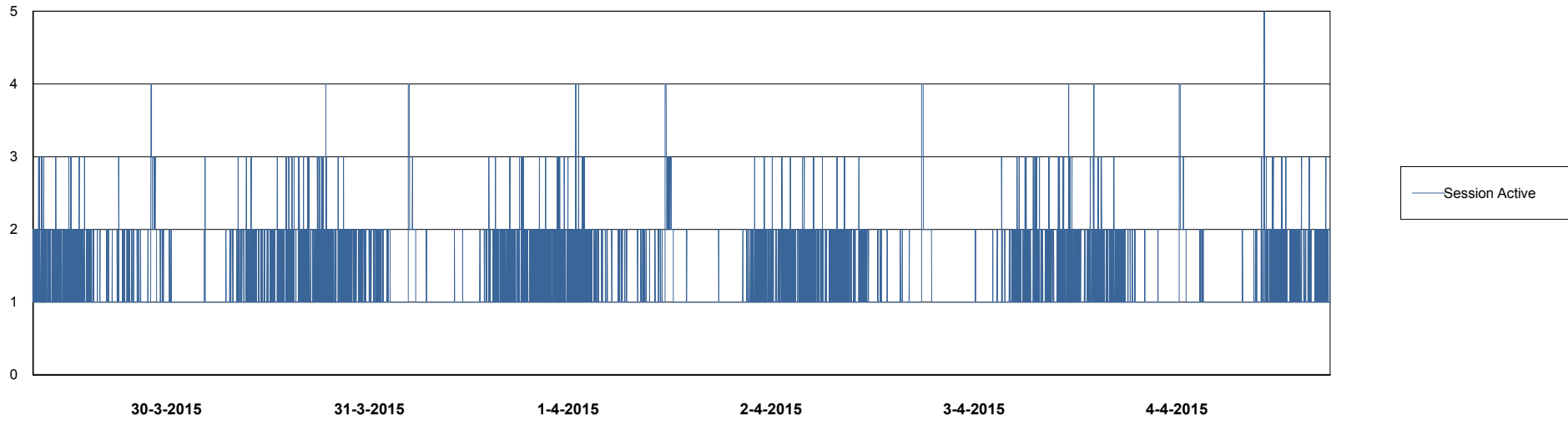
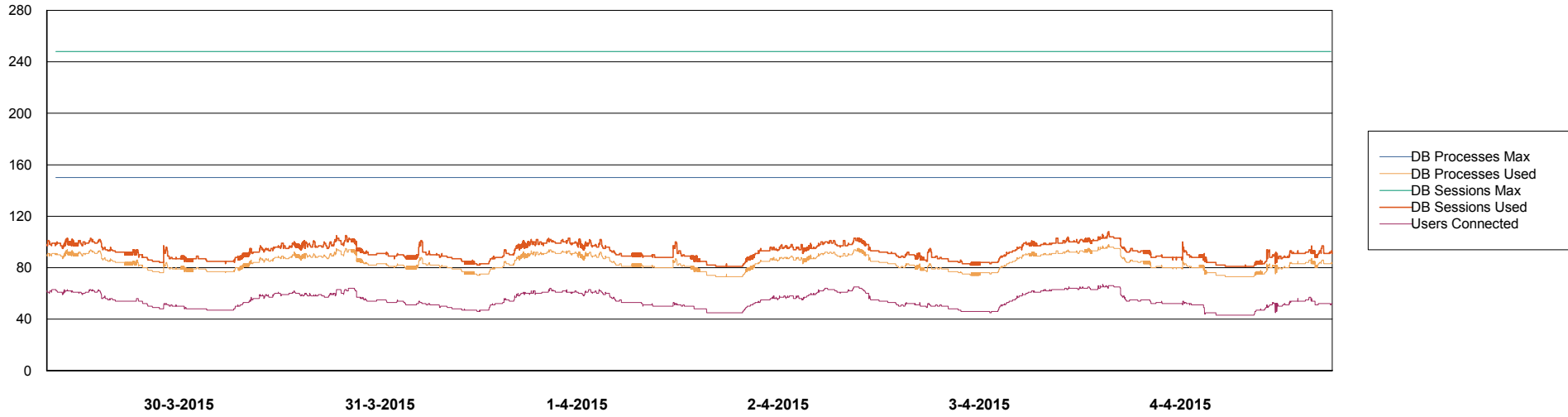
	Total disk space on C (GB)	Free disk space on C (GB)	Total disk space on D (GB)	Free disk space on D (GB)	Total disk space on E (GB)	Free disk space on E (GB)
4-4-2015	279	111	137	93	137	37
3-4-2015	279	111	137	93	137	37
2-4-2015	279	111	137	93	137	38
1-4-2015	279	111	137	93	137	39
31-3-2015	279	111	137	93	137	40
30-3-2015	279	111	137	93	137	41
29-3-2015	279	111	137	93	137	41

# Weekly SLA Customer Report

Customer RFL\_Production  
Database ID 36



## DATABASE PERFORMANCE RFLDB\_Production

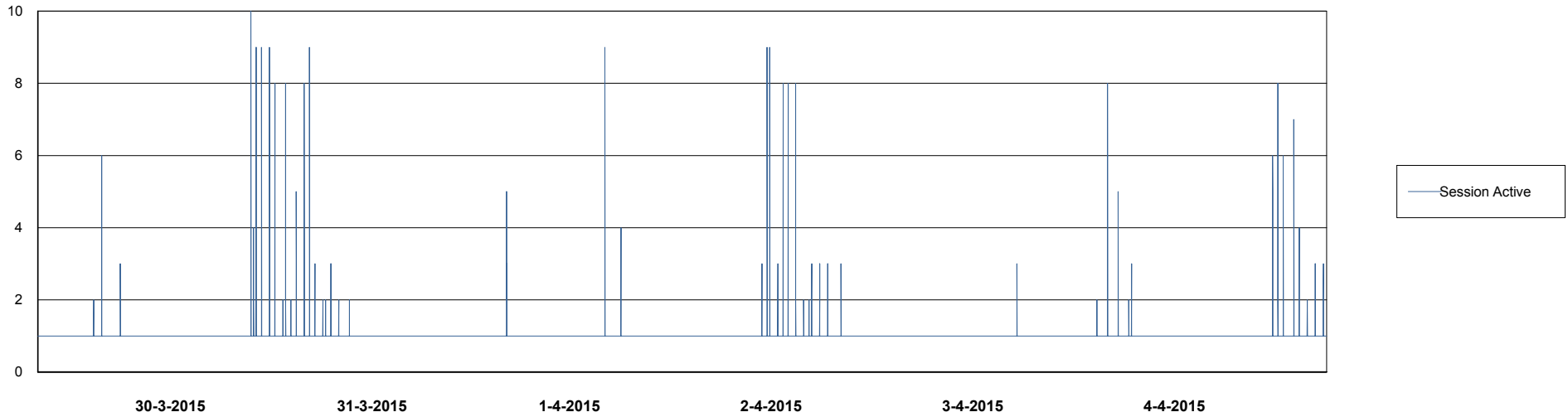
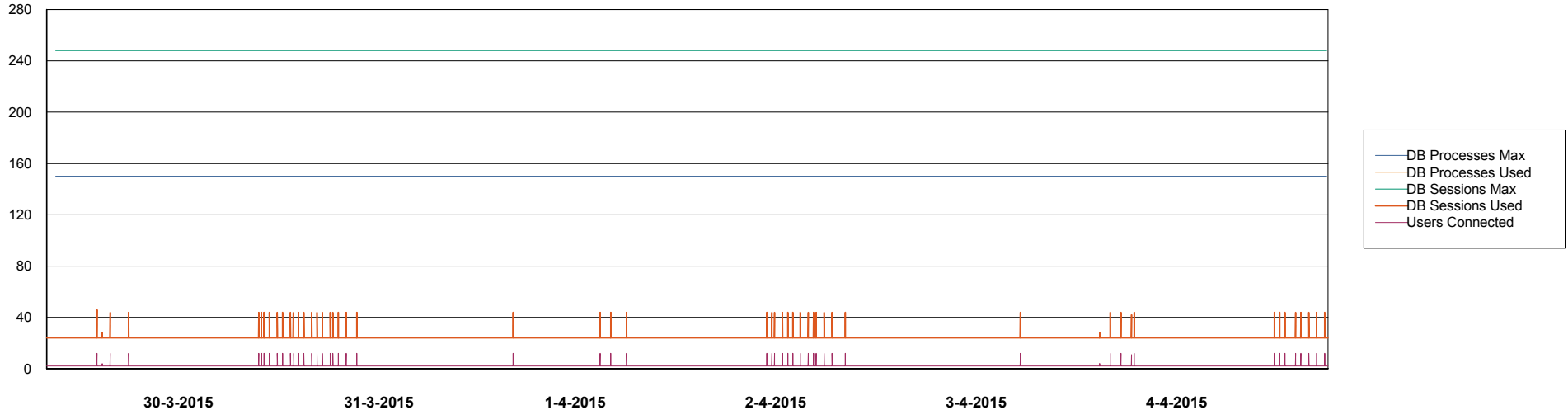


# Weekly SLA Customer Report

Customer RFL\_Production  
Database ID 36



## DATABASE PERFORMANCE RFLDB\_Standby



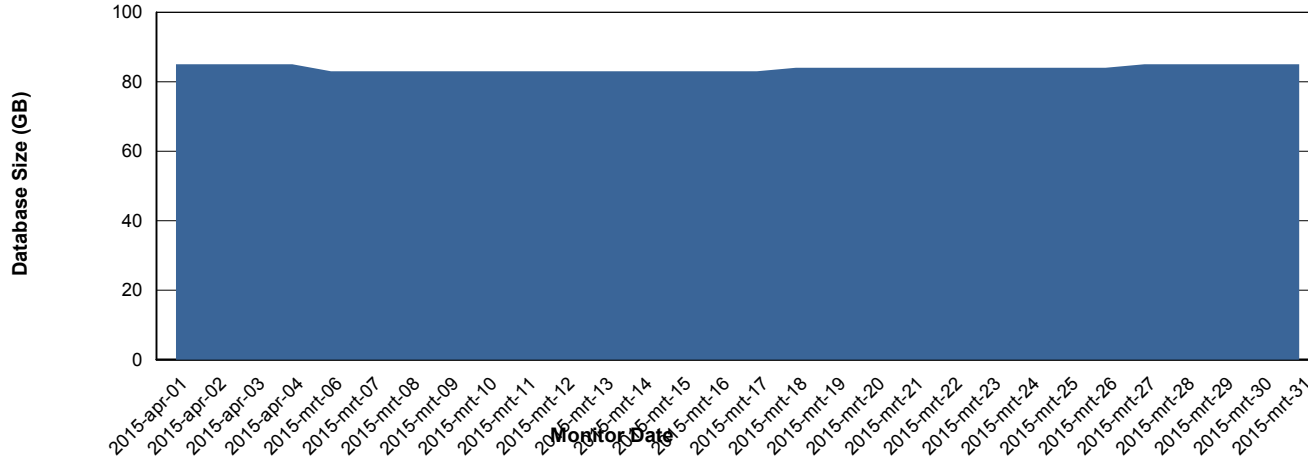
# Weekly SLA Customer Report

Customer RFL\_Production  
 Database ID 36



=====  
 DATABASE SIZE RFLDB\_Production  
 =====

## Database growth over last month



=====  
 DATABASE TABLESPACES RFLDB\_Production  
 =====

### TOTAL DATABASE SIZE PER TABLESPACE

Date	Tablespace Name	Filesize (Gb)	Usedsize (Gb)	Percentage free
4-4-2015	ABSDATA	28	20	29
	INDX	80	64	20
3-4-2015	ABSDATA	28	20	29
	INDX	80	64	20
2-4-2015	ABSDATA	28	20	29
	INDX	80	64	20
1-4-2015	ABSDATA	28	20	29
	INDX	80	64	20
31-3-2015	ABSDATA	28	20	29
	INDX	80	64	20
30-3-2015	ABSDATA	28	20	29
	INDX	80	64	20
29-3-2015	ABSDATA	28	20	29
	INDX	80	64	20

# Weekly SLA Customer Report

Customer RFL\_Production  
Database ID 36



=====  
STANDBY DATABASE HEALTH RFL\_Production  
=====

### Recovery lag for last 7 days

