

# Weekly SLA Customer Report

Customer PCO Production  
 Database ID 44



=====  
 HARDDISK USAGE PCO\_PRD\_ORACLE1  
 =====

	Total disk space on C (GB)	Free disk space on C (GB)	Total disk space on D (GB)	Free disk space on D (GB)
4-4-2015	279	217	838	176
3-4-2015	279	217	838	190
2-4-2015	279	217	838	229
1-4-2015	279	217	838	268
31-3-2015	279	217	838	294
30-3-2015	279	217	838	297
29-3-2015	279	217	838	299

=====  
 HARDDISK USAGE PCO\_PRD\_ORACLE2  
 =====

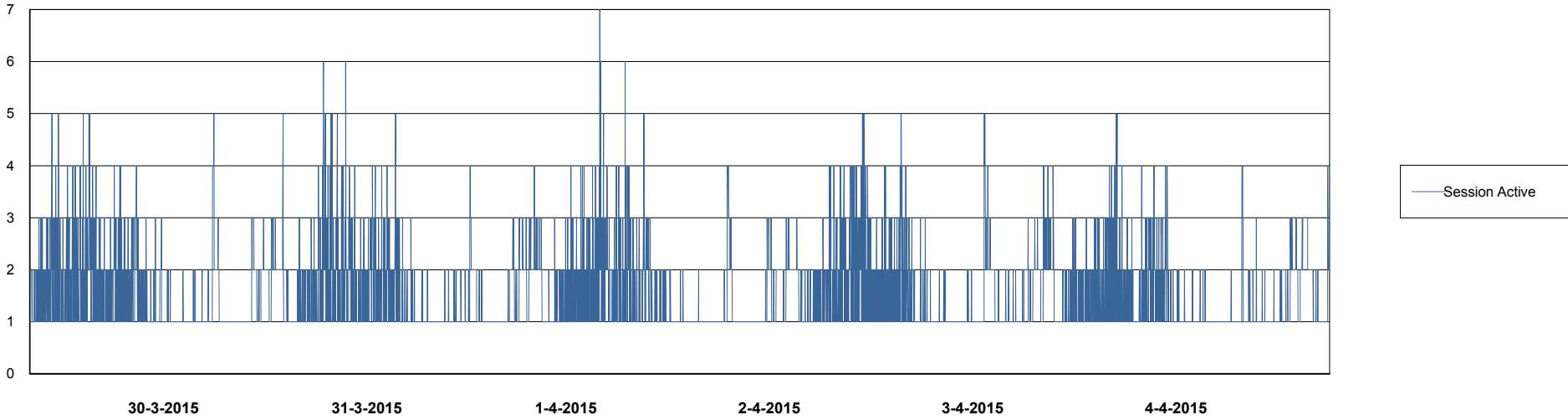
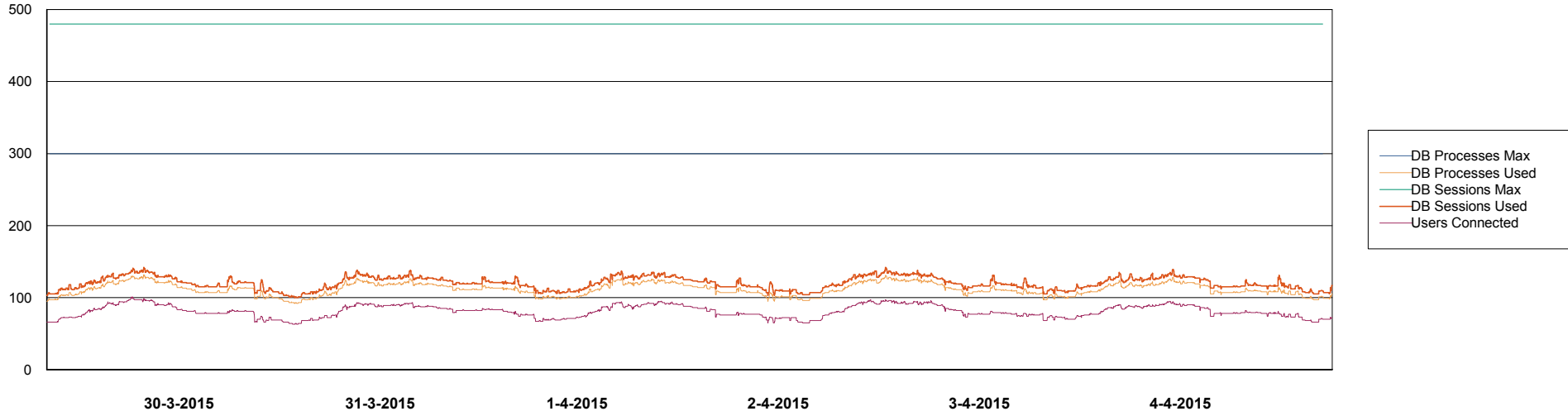
	Total disk space on C (GB)	Free disk space on C (GB)	Total disk space on D (GB)	Free disk space on D (GB)
4-4-2015	279	217	838	477
3-4-2015	279	218	838	479
2-4-2015	279	218	838	482
1-4-2015	279	218	838	484
31-3-2015	279	218	838	487
30-3-2015	279	219	838	490
29-3-2015	279	219	838	491

# Weekly SLA Customer Report

Customer PCO Production  
Database ID 44



=====  
DATABASE PERFORMANCE      PCODB\_Production      =====  
=====

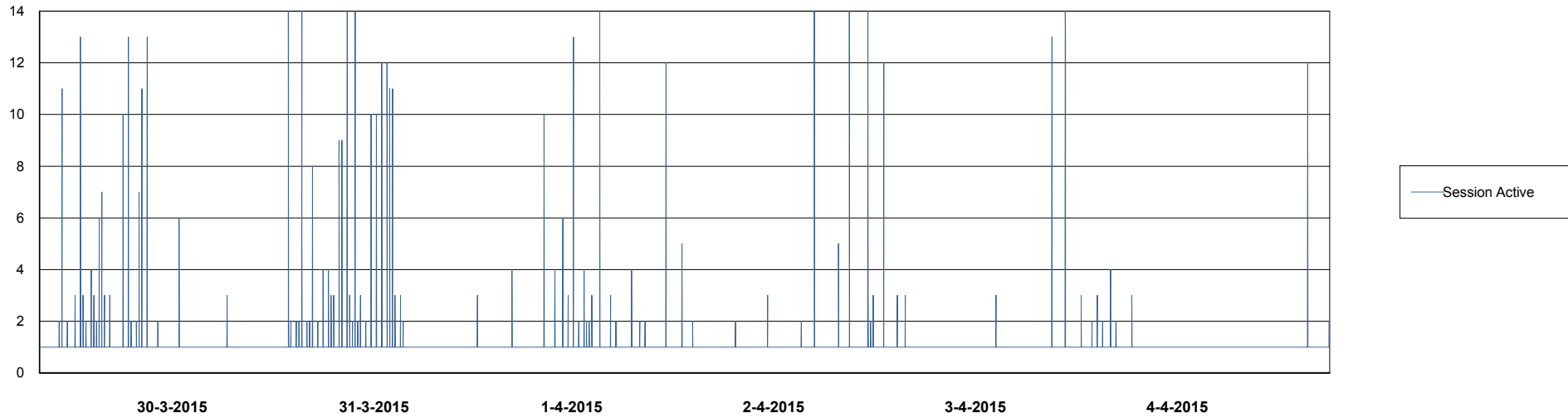
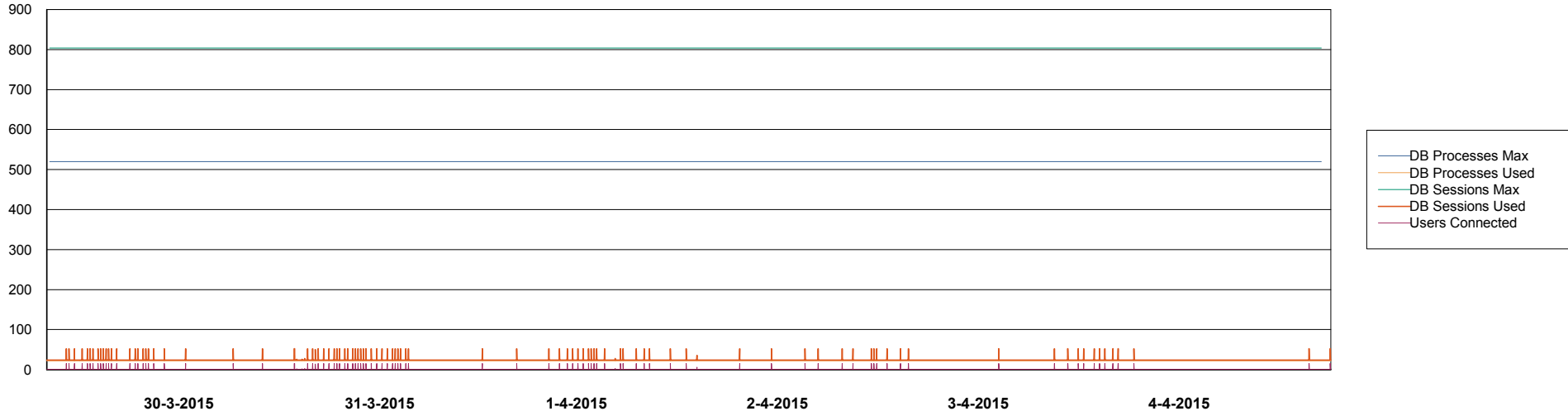


# Weekly SLA Customer Report

Customer PCO Production  
Database ID 44



## DATABASE PERFORMANCE PCODB\_Standby



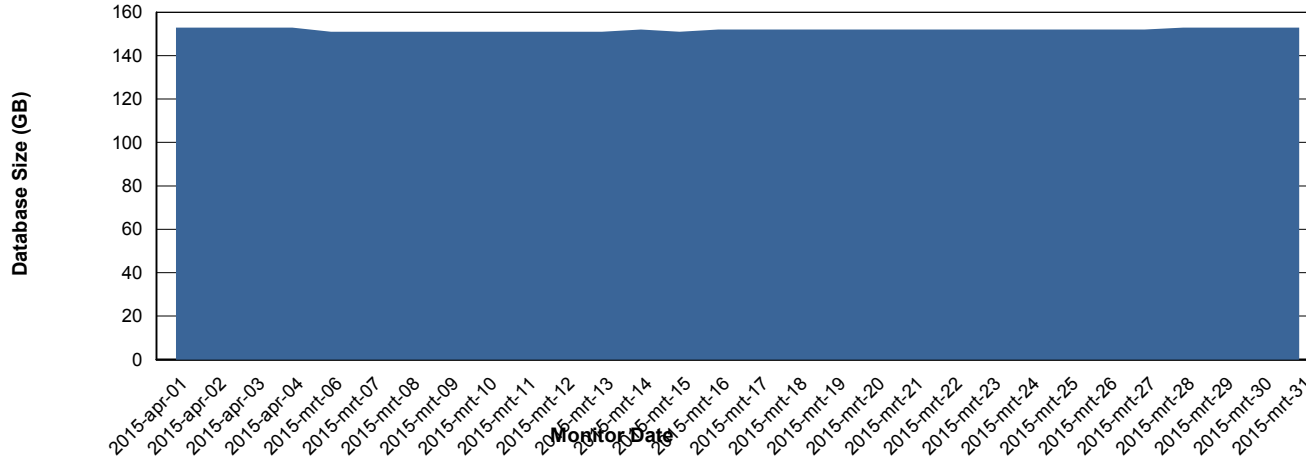
# Weekly SLA Customer Report

Customer PCO Production  
 Database ID 44



=====  
 DATABASE SIZE PCODB\_Production  
 =====

## Database growth over last month



=====  
 DATABASE TABLESPACES PCODB\_Production  
 =====

### TOTAL DATABASE SIZE PER TABLESPACE

Date	Tablespace Name	Filesize (Gb)	Usedsize (Gb)	Percentage free
4-4-2015	ABSDATA	78	62	21
	INDX	109	90	17
3-4-2015	ABSDATA	78	62	21
	INDX	109	90	17
2-4-2015	ABSDATA	78	61	22
	INDX	109	90	17
1-4-2015	ABSDATA	78	61	22
	INDX	109	90	17
31-3-2015	ABSDATA	78	61	22
	INDX	109	90	17
30-3-2015	ABSDATA	78	61	22
	INDX	109	90	17
29-3-2015	ABSDATA	78	61	22
	INDX	109	90	17

# Weekly SLA Customer Report

Customer PCO Production  
Database ID 44



=====  
STANDBY DATABASE HEALTH PCO Production  
=====

### Recovery lag for last 7 days

