

# Weekly SLA Customer Report

Customer NIX\_Production  
Database ID 51



=====  
HARDDISK USAGE NIX\_PRD\_ABSAPP1  
=====

	Total disk space on C (GB)	Free disk space on C (GB)
4-4-2015	136	86
3-4-2015	136	86
2-4-2015	136	86
1-4-2015	136	86
31-3-2015	136	86
30-3-2015	136	86
29-3-2015	136	86

=====  
HARDDISK USAGE NIX\_PRD\_ABSAPP2  
=====

	Total disk space on C (GB)	Free disk space on C (GB)
4-4-2015	200	181
3-4-2015	200	180
2-4-2015	200	180
1-4-2015	200	180
31-3-2015	200	180
30-3-2015	200	180

=====  
HARDDISK USAGE NIX\_PRD\_ABSAPP3  
=====

# Weekly SLA Customer Report

Customer NIX\_Production  
Database ID 51



	Total disk space on C (GB)	Free disk space on C (GB)
4-4-2015	200	181
3-4-2015	200	181
2-4-2015	200	181
1-4-2015	200	180
31-3-2015	200	179
30-3-2015	200	179

=====  
 HARDDISK USAGE NIX\_PRD\_ABSWEB1  
 =====

	Total disk space on C (GB)	Free disk space on C (GB)	Total disk space on D (GB)
4-4-2015	930	724	3
3-4-2015	930	724	3
2-4-2015	930	724	3
1-4-2015	930	724	3
31-3-2015	930	724	3
30-3-2015	930	725	3
29-3-2015	930	725	3

=====  
 HARDDISK USAGE NIX\_PRD\_ORACLE\_B11  
 =====

## Weekly SLA Customer Report

Customer      NIX\_Production  
 Database ID    51



	Total disk space on C (GB)	Free disk space on C (GB)	Total disk space on D (GB)	Free disk space on D (GB)	Total disk space on E (GB)	Free disk space on E (GB)
4-4-2015	139	88	279	169	99	33
3-4-2015	139	88	279	169	99	33
2-4-2015	139	88	279	169	99	33
1-4-2015	139	88	279	169	99	33
31-3-2015	139	88	279	169	99	33
30-3-2015	139	88	279	169	99	33
29-3-2015	139	88	279	169	99	34

=====  
 HARDDISK USAGE    NIX\_PRD\_ORCDB1  
 =====

	Total disk space on C (GB)	Free disk space on C (GB)	Total disk space on D (GB)	Free disk space on D (GB)	Total disk space on E (GB)	Free disk space on E (GB)
4-4-2015	136	67	136	27	136	34
3-4-2015	136	67	136	27	136	37
2-4-2015	136	67	136	27	136	44
1-4-2015	136	67	136	27	136	48
31-3-2015	136	67	136	27	136	50
30-3-2015	136	67	136	27	136	52
29-3-2015	136	67	136	27	136	52

=====  
 HARDDISK USAGE    NIX\_PRD\_ORCDB2  
 =====

## Weekly SLA Customer Report

Customer      NIX\_Production  
 Database ID    51



	Total disk space on C (GB)	Free disk space on C (GB)	Total disk space on D (GB)	Free disk space on D (GB)	Total disk space on E (GB)	Free disk space on E (GB)
4-4-2015	279	62	279	43	279	147
3-4-2015	279	62	279	43	279	145
2-4-2015	279	62	279	43	279	150
1-4-2015	279	62	279	43	279	148
31-3-2015	279	62	279	43	279	146
30-3-2015	279	62	279	43	279	138
29-3-2015	279	62	279	43	279	148

=====

HARDDISK USAGE    NIX\_PRD\_ORCDB3

=====

	Total disk space on C (GB)	Free disk space on C (GB)	Total disk space on E (GB)	Free disk space on E (GB)	Total disk space on F (GB)	Free disk space on F (GB)	Total disk space on G (GB)	Free disk space on G (GB)
4-4-2015	279	173	558	451	558	360	279	175
3-4-2015	279	173	558	451	558	360	279	175
2-4-2015	279	173	558	451	558	360	279	175
1-4-2015	279	173	558	451	558	360	279	175
31-3-2015	279	173	558	451	558	360	279	175
30-3-2015	279	173	558	451	558	360	0	0

=====

HARDDISK USAGE    NIX\_PRD\_ORCDB4

=====

## Weekly SLA Customer Report

Customer      NIX\_Production  
 Database ID    51



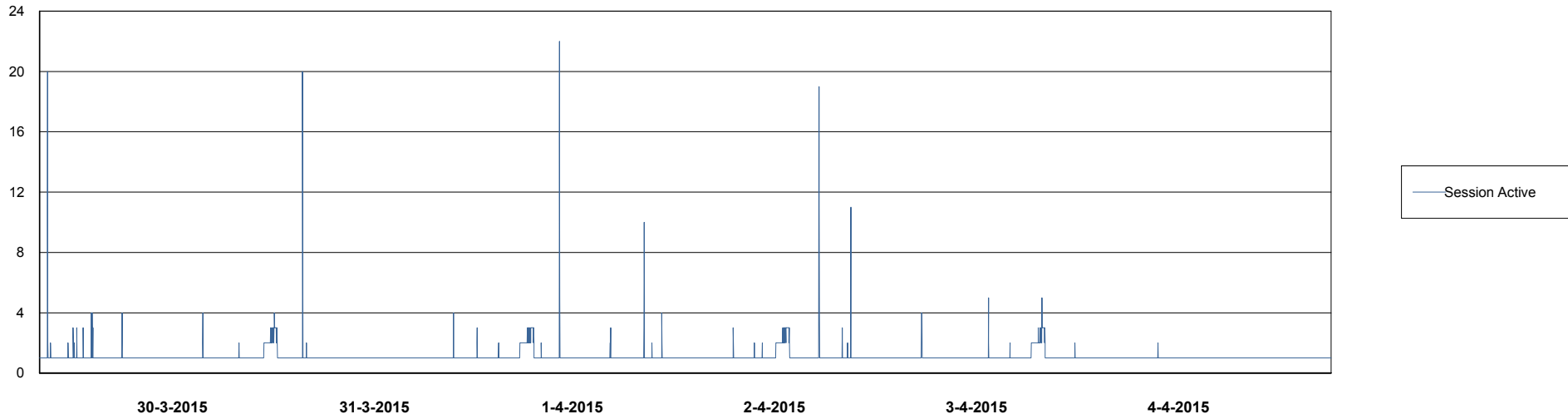
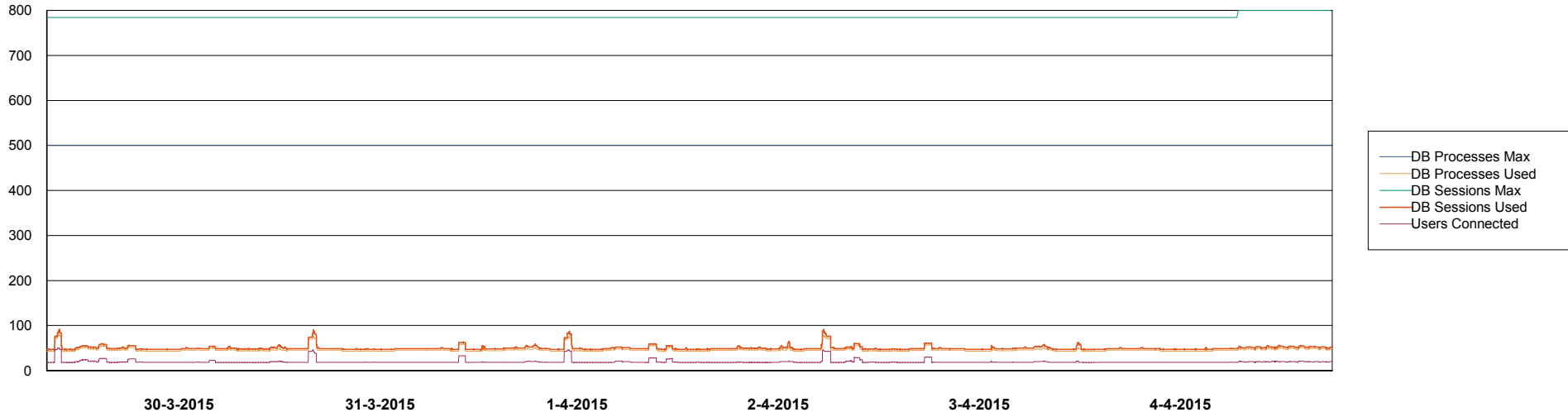
	Total disk space on C (GB)	Free disk space on C (GB)	Total disk space on D (GB)	Free disk space on D (GB)	Total disk space on E (GB)	Free disk space on E (GB)	Total disk space on F (GB)	Free disk space on F (GB)	Total disk space on G (GB)
4-4-2015	279	242	4	0	558	500	558	458	279
3-4-2015	279	242	4	0	558	500	558	458	279
2-4-2015	279	242	4	0	558	500	558	458	279
1-4-2015	279	242	4	0	558	500	558	458	279
31-3-2015	279	243	4	0	558	500	558	458	279
30-3-2015	279	243	4	0	558	500	558	458	0

# Weekly SLA Customer Report

Customer NIX\_Production  
Database ID 51



DATABASE PERFORMANCE NIXDB\_BI

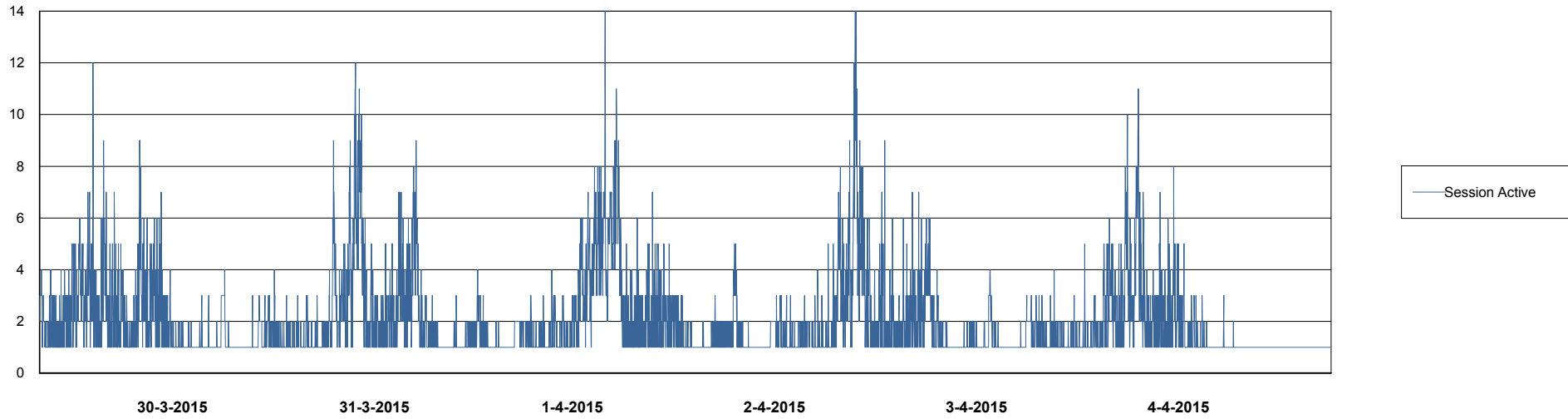
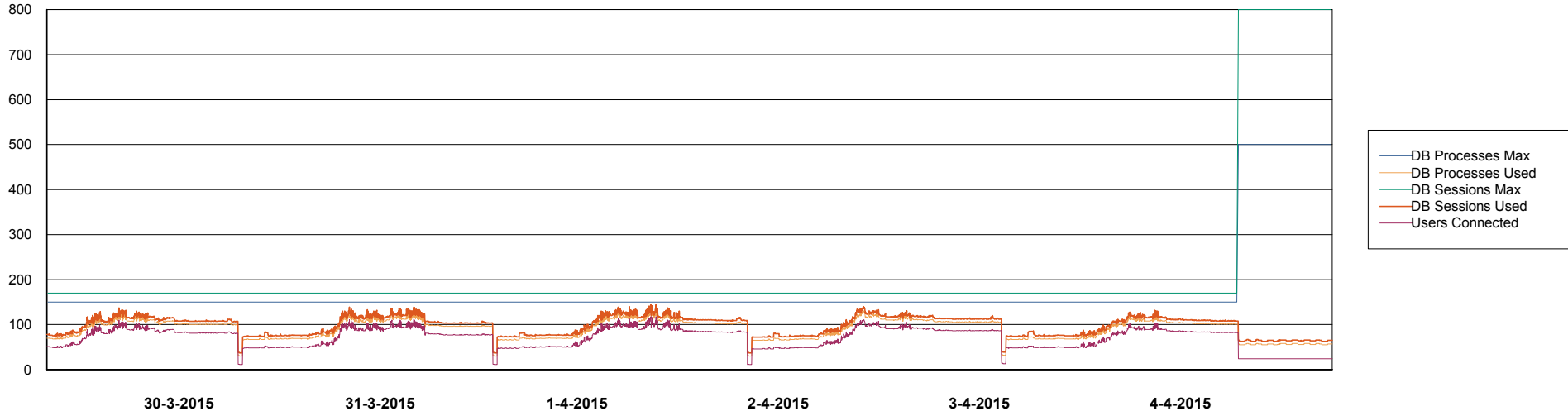


# Weekly SLA Customer Report

Customer NIX\_Production  
Database ID 51



DATABASE PERFORMANCE NIXDB\_Production

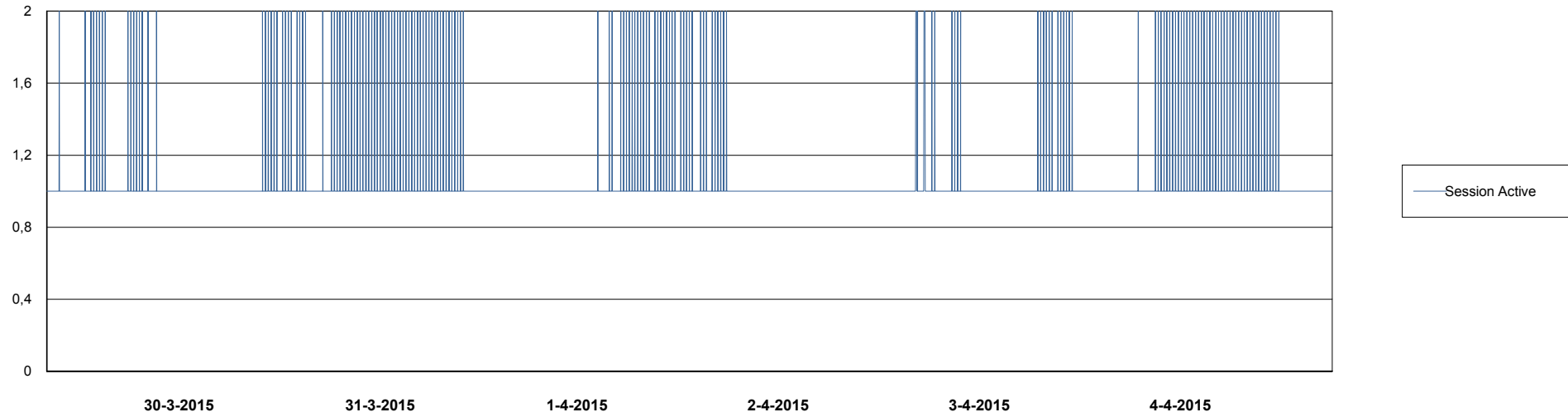
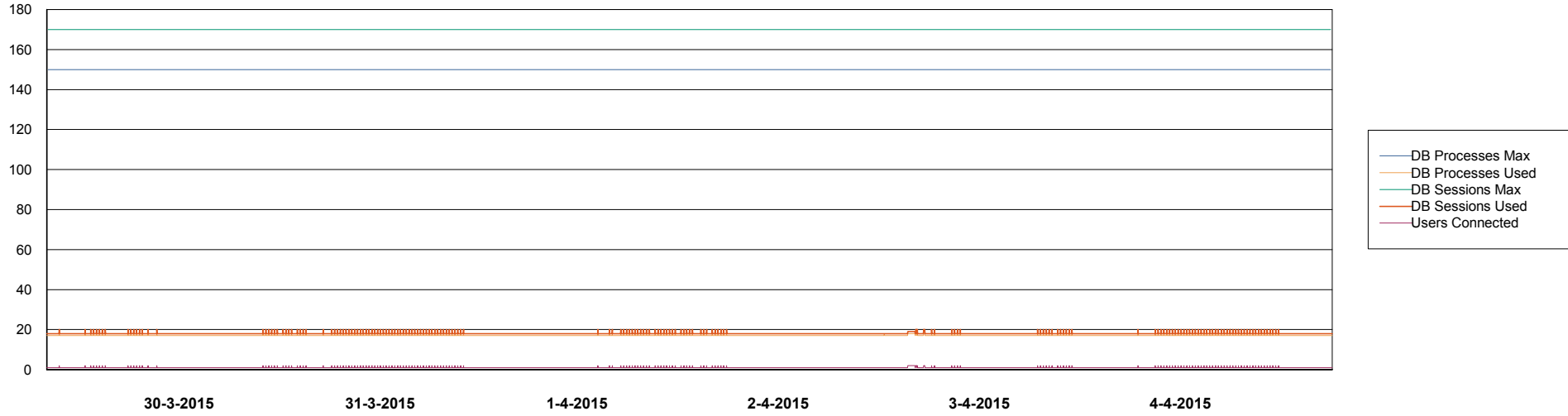


# Weekly SLA Customer Report

Customer NIX\_Production  
Database ID 51



DATABASE PERFORMANCE NIXDB\_Standby





# Weekly SLA Customer Report

Customer NIX\_Production  
 Database ID 51



=====  
 DATABASE TABLESPACES NIXDB\_BI  
 =====  
 TOTAL DATABASE SIZE PER TABLESPACE

Date	Tablespace Name	Filesize (Gb)	Usedsize (Gb)	Percentage free
4-4-2015	ABSDATA	50	20	60
	INDX	100	32	68
3-4-2015	ABSDATA	28	20	29
	INDX	44	32	27
2-4-2015	ABSDATA	28	20	29
	INDX	44	32	27
1-4-2015	ABSDATA	28	20	29
	INDX	44	32	27
31-3-2015	ABSDATA	28	20	29
	INDX	44	32	27
30-3-2015	ABSDATA	28	20	29
	INDX	44	32	27
29-3-2015	ABSDATA	28	20	29
	INDX	44	32	27

# Weekly SLA Customer Report

Customer NIX\_Production  
 Database ID 51



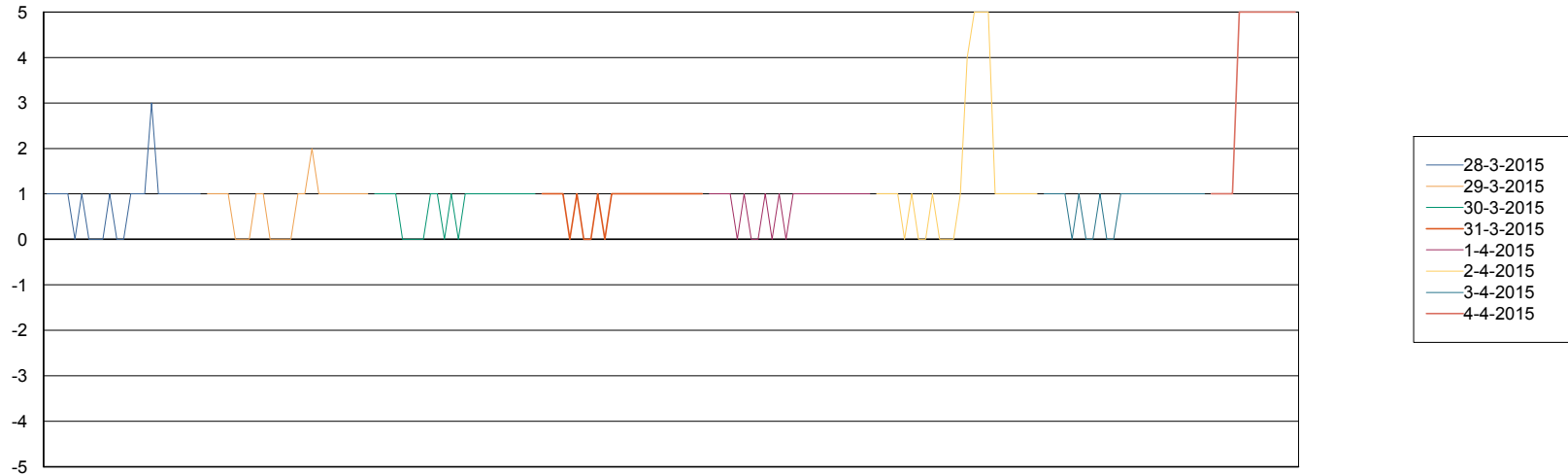
=====  
 DATABASE TABLESPACES NIXDB\_Production  
 =====

TOTAL DATABASE SIZE PER TABLESPACE

Date	Tablespace Name	Filesize (Gb)	Usedsize (Gb)	Percentage free
4-4-2015	ABSDATA	50	32	36
	INDX	109	89	18
3-4-2015	ABSDATA	40	32	20
	INDX	109	89	18
2-4-2015	ABSDATA	40	32	20
	INDX	109	89	18
1-4-2015	ABSDATA	40	32	20
	INDX	109	89	18
31-3-2015	ABSDATA	40	32	20
	INDX	109	89	18
30-3-2015	ABSDATA	40	32	20
	INDX	109	89	18
29-3-2015	ABSDATA	40	32	20
	INDX	109	89	18

=====  
 STANDBY DATABASE HEALTH NIX\_Production  
 =====

Recovery lag for last 7 days



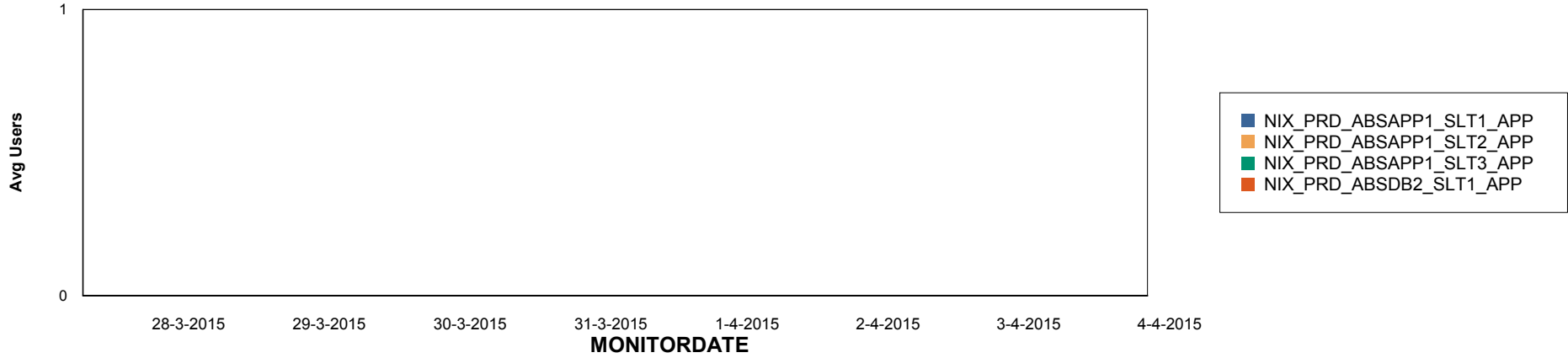
# Weekly SLA Customer Report

Customer NIX\_Production  
Database ID 51

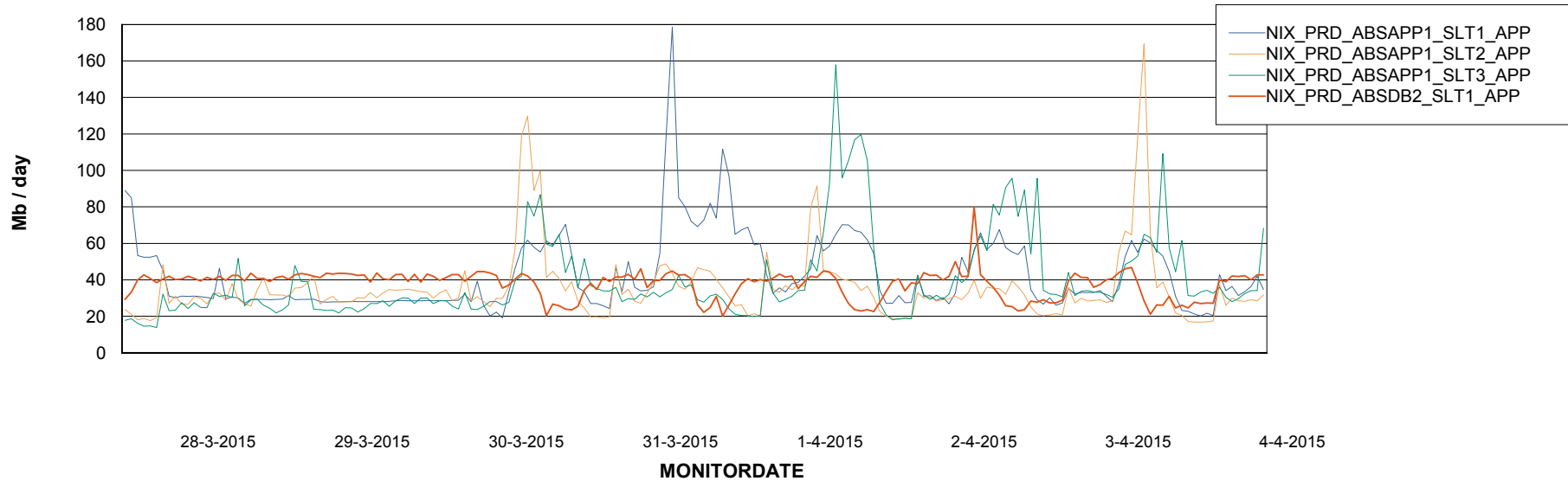


ABSolute Application Server Services

## Disaster per ABS Server



## Avg memory used per ABS Server Service



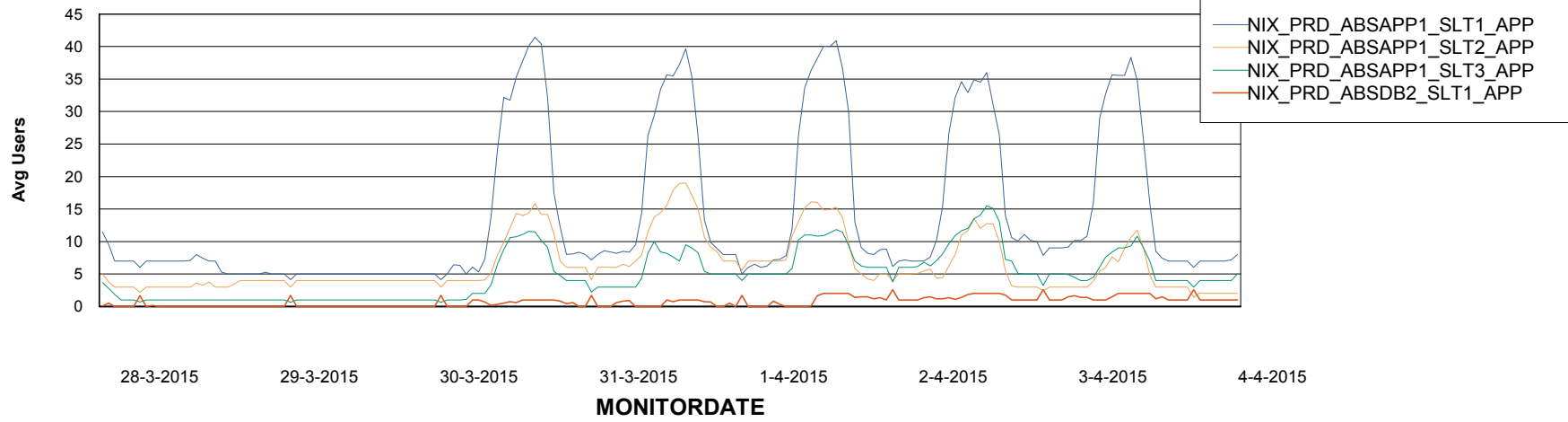
# Weekly SLA Customer Report

Customer NIX\_Production  
Database ID 51



=====  
ABSolute Application Server Services  
=====

### Avg users per day per ABS server



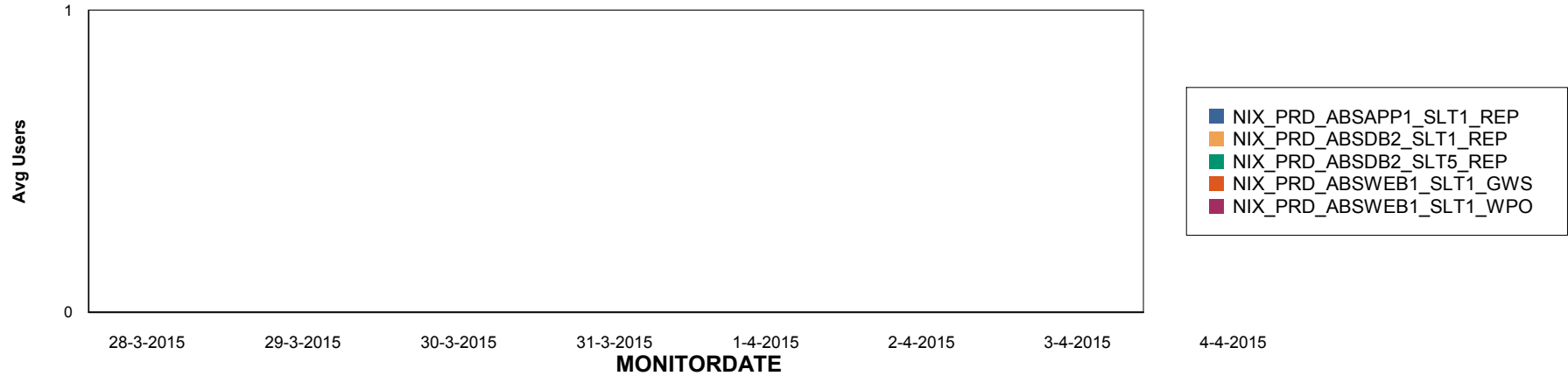
# Weekly SLA Customer Report

Customer NIX\_Production  
Database ID 51

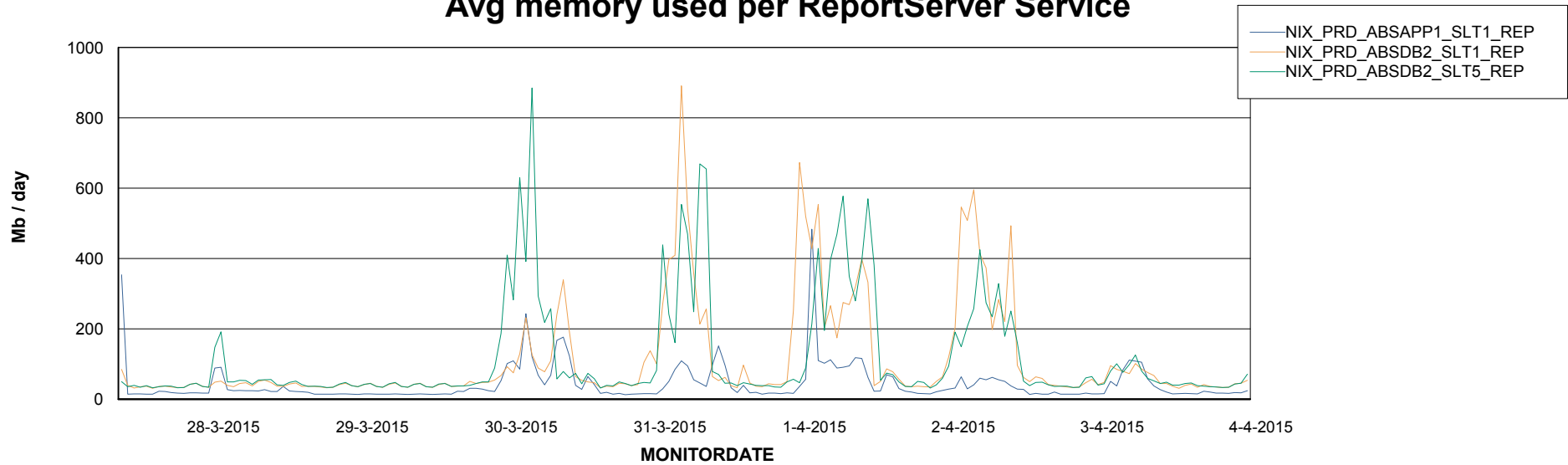


=====  
ABSolute Application ReportServer Services  
=====

## Disaster per ReportServer



## Avg memory used per ReportServer Service



# Weekly SLA Customer Report

Customer NIX\_Production  
Database ID 51



## Disaster per ABS component

