

Weekly SLA Customer Report

Customer FIS_Production
 Database ID 46



=====
 HARDDISK USAGE FIS_PRD_ORACLE1
 =====

	Total disk space on C (GB)	Free disk space on C (GB)	Total disk space on L (GB)	Free disk space on L (GB)	Total disk space on O (GB)	Free disk space on O (GB)
4-4-2015	279	224	279	219	186	35
3-4-2015	279	224	279	223	186	35
2-4-2015	279	224	279	225	186	35
1-4-2015	279	224	279	181	186	35
31-3-2015	279	224	279	158	186	35
30-3-2015	279	224	279	160	186	35
29-3-2015	279	224	279	162	186	35

=====
 HARDDISK USAGE FIS_PRD_ORACLE2
 =====

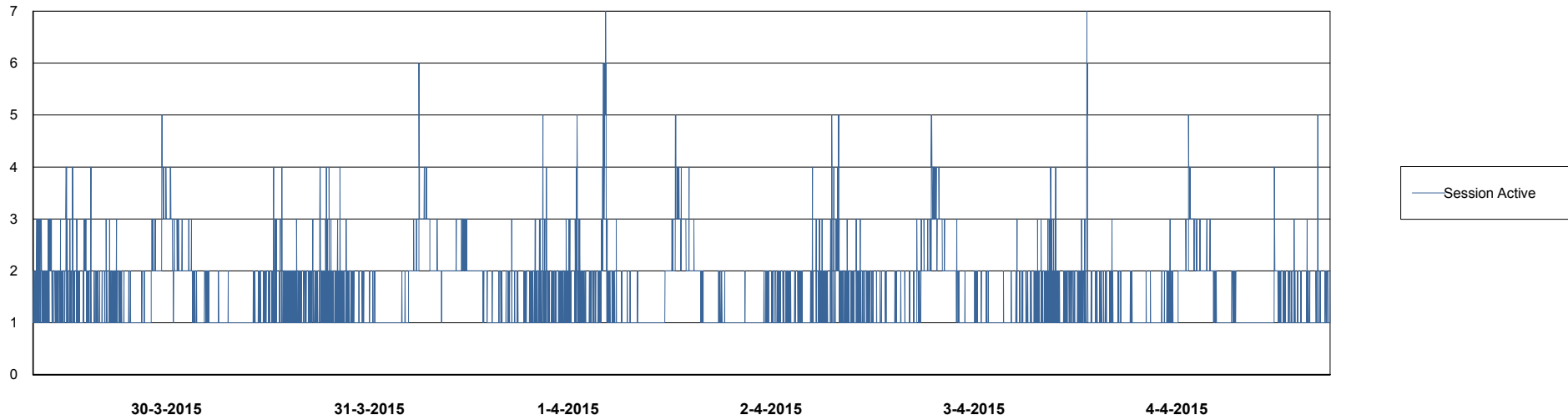
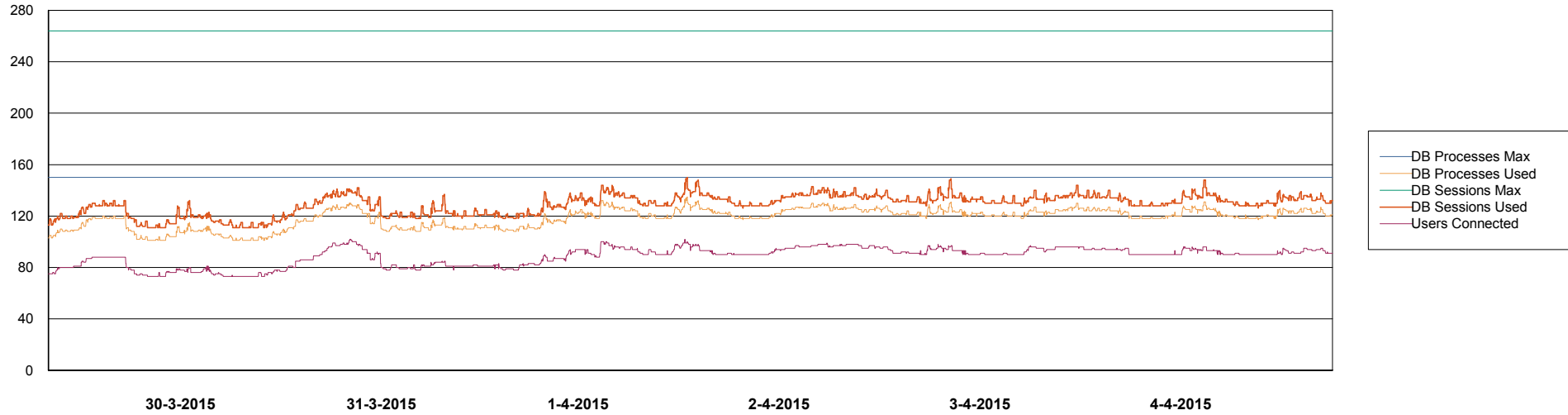
	Total disk space on C (GB)	Free disk space on C (GB)	Total disk space on L (GB)	Free disk space on L (GB)	Total disk space on O (GB)	Free disk space on O (GB)
4-4-2015	279	228	279	183	186	35
3-4-2015	279	228	279	183	186	35
2-4-2015	279	228	279	183	186	35
1-4-2015	279	228	279	137	186	35
31-3-2015	279	228	279	113	186	35
30-3-2015	279	228	279	114	186	35
29-3-2015	279	228	279	116	186	35

Weekly SLA Customer Report

Customer FIS_Production
Database ID 46



DATABASE PERFORMANCE FISDB_Production

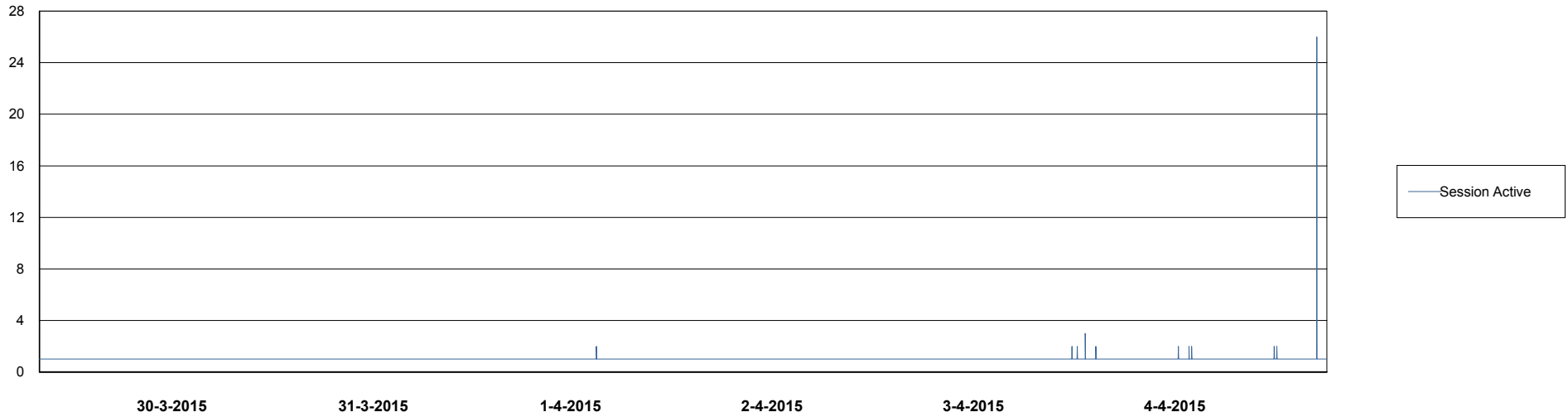
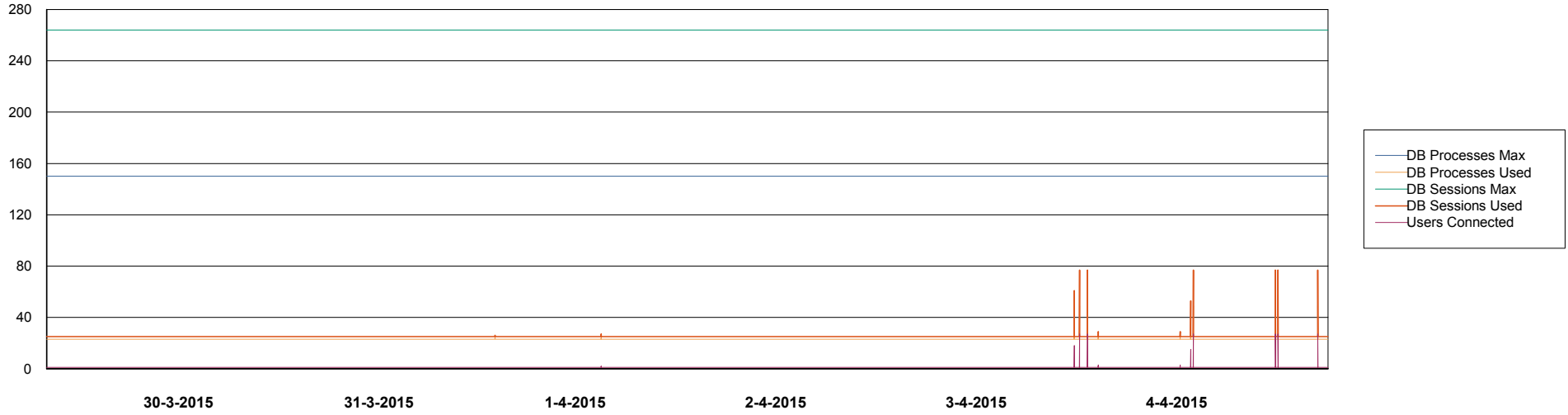


Weekly SLA Customer Report

Customer FIS_Production
Database ID 46



=====
DATABASE PERFORMANCE FISDB_Standby
=====



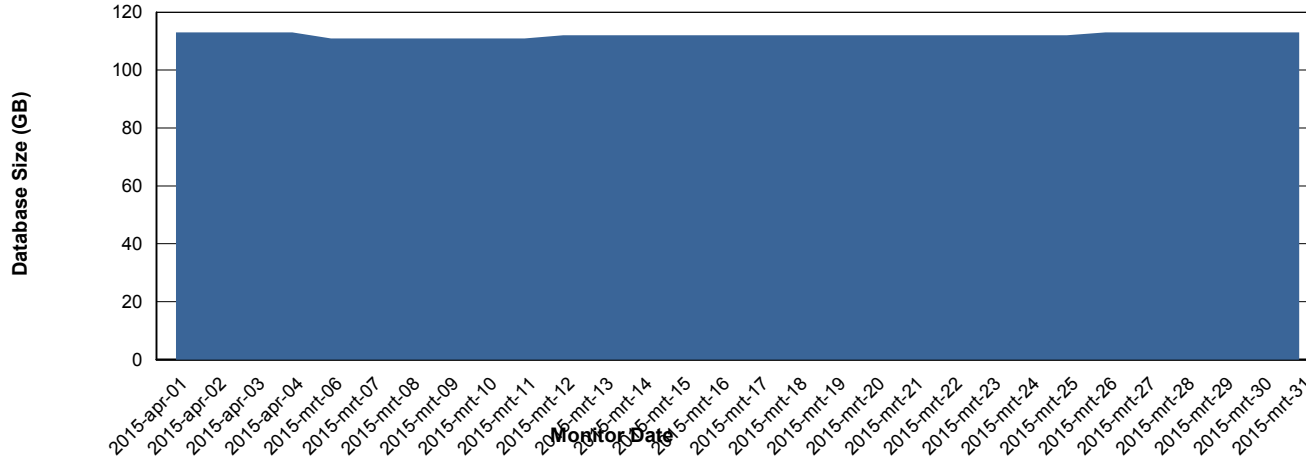
Weekly SLA Customer Report

Customer FIS_Production
 Database ID 46



=====
 DATABASE SIZE FISDB_Production
 =====

Database growth over last month



=====
 DATABASE TABLESPACES FISDB_Production
 =====

TOTAL DATABASE SIZE PER TABLESPACE

Date	Tablespace Name	Filesize (Gb)	Usedsize (Gb)	Percentage free
4-4-2015	ABSDATA	62	50	19
	INDX	75	60	20
3-4-2015	ABSDATA	62	50	19
	INDX	75	60	20
2-4-2015	ABSDATA	62	50	19
	INDX	75	60	20
1-4-2015	ABSDATA	62	50	19
	INDX	75	60	20
31-3-2015	ABSDATA	62	50	19
	INDX	75	60	20
30-3-2015	ABSDATA	62	50	19
	INDX	75	60	20
29-3-2015	ABSDATA	62	50	19
	INDX	75	60	20

Weekly SLA Customer Report

Customer FIS_Production
Database ID 46



=====
STANDBY DATABASE HEALTH FIS_Production
=====

Recovery lag for last 7 days

