

Weekly SLA Customer Report

Customer NIX_Production
 Database ID 51



=====
 HARDDISK USAGE NIX_PRD_ABSAPP1
 =====

	Total disk space on C (GB)	Free disk space on C (GB)
28-3-2015	136	86
27-3-2015	136	86
26-3-2015	136	86
25-3-2015	136	86
24-3-2015	136	86
23-3-2015	136	86
22-3-2015	136	86

=====
 HARDDISK USAGE NIX_PRD_ABSWEB1
 =====

	Total disk space on C (GB)	Free disk space on C (GB)	Total disk space on D (GB)
28-3-2015	930	726	3
27-3-2015	930	726	3
26-3-2015	930	727	3
25-3-2015	930	727	3
24-3-2015	930	728	3
23-3-2015	930	728	3
22-3-2015	930	728	3

Weekly SLA Customer Report

Customer NIX_Production
 Database ID 51



=====
 HARDDISK USAGE NIX_PRD_ORACLE_B11
 =====

	Total disk space on C (GB)	Free disk space on C (GB)	Total disk space on D (GB)	Free disk space on D (GB)	Total disk space on E (GB)	Free disk space on E (GB)
28-3-2015	139	88	279	169	99	34
27-3-2015	139	88	279	169	99	34
26-3-2015	139	88	279	169	99	34
25-3-2015	139	88	279	169	99	34
24-3-2015	139	88	279	169	99	34
23-3-2015	139	88	279	169	99	29
22-3-2015	139	88	279	169	99	27

=====
 HARDDISK USAGE NIX_PRD_ORCDB1
 =====

	Total disk space on C (GB)	Free disk space on C (GB)	Total disk space on D (GB)	Free disk space on D (GB)	Total disk space on E (GB)	Free disk space on E (GB)
28-3-2015	136	67	136	27	136	52
27-3-2015	136	67	136	27	136	55
26-3-2015	136	67	136	27	136	48
25-3-2015	136	66	136	27	136	41
24-3-2015	136	67	136	27	136	45
23-3-2015	136	67	136	27	136	49
22-3-2015	136	67	136	27	136	49

Weekly SLA Customer Report

Customer NIX_Production
 Database ID 51



=====
 HARDDISK USAGE NIX_PRD_ORCDB2
 =====

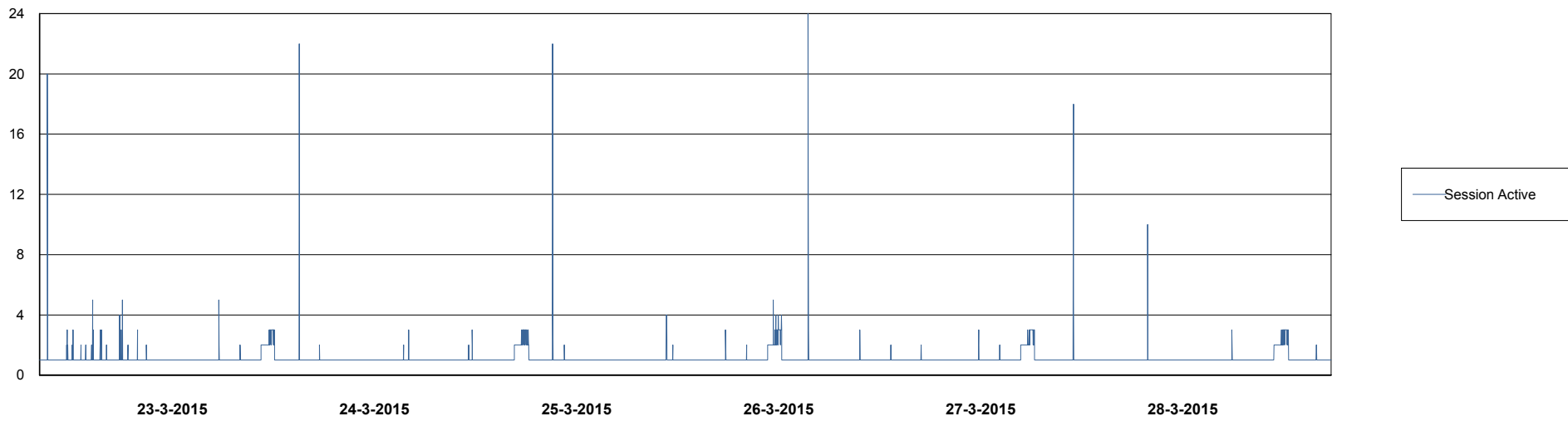
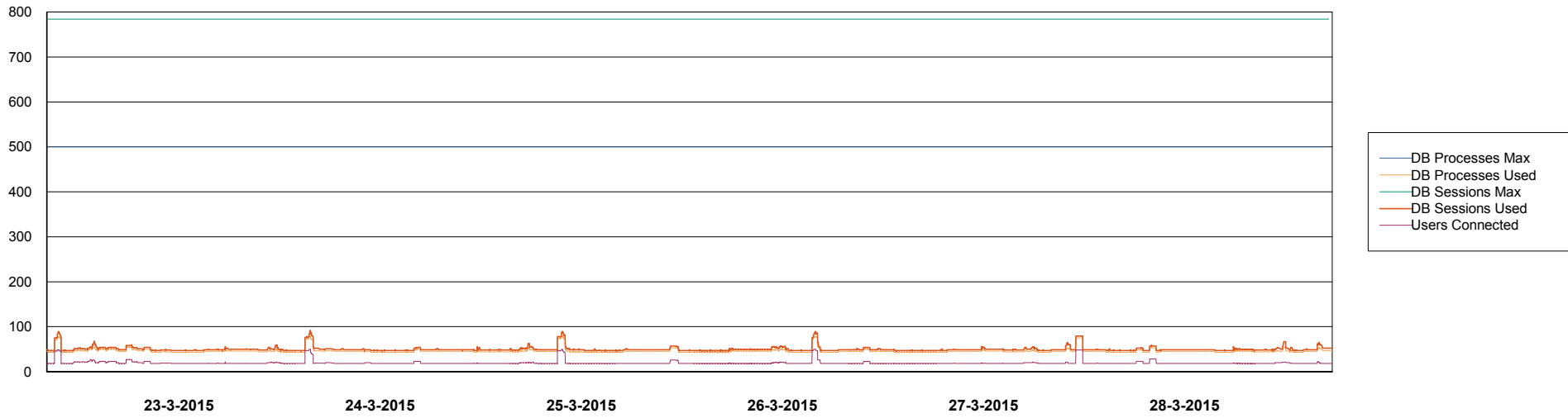
	Total disk space on C (GB)	Free disk space on C (GB)	Total disk space on D (GB)	Free disk space on D (GB)	Total disk space on E (GB)	Free disk space on E (GB)
28-3-2015	279	62	279	43	279	150
27-3-2015	279	62	279	43	279	92
26-3-2015	279	62	279	43	279	114
25-3-2015	279	62	279	43	279	161
24-3-2015	279	62	279	43	279	168
23-3-2015	279	62	279	43	279	154
22-3-2015	279	62	279	43	279	163

Weekly SLA Customer Report

Customer NIX_Production
Database ID 51



DATABASE PERFORMANCE NIXDB_BI

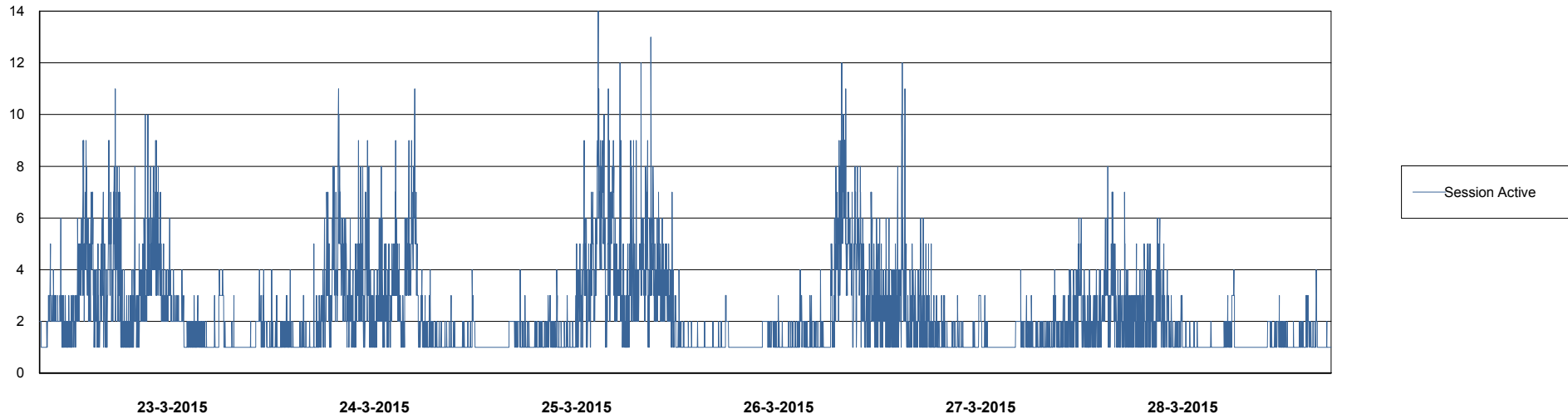
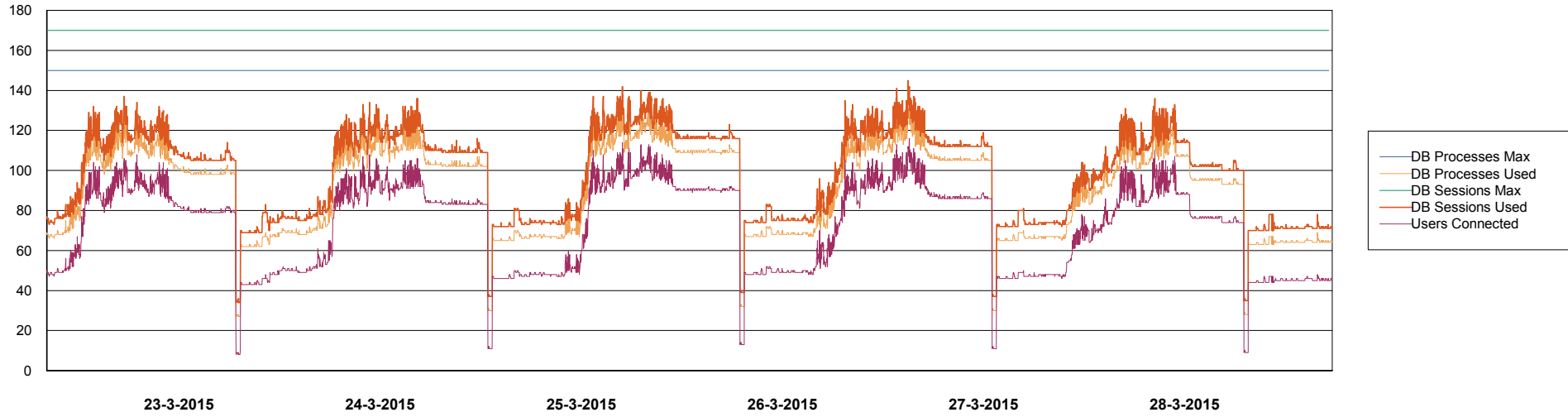


Weekly SLA Customer Report

Customer NIX_Production
Database ID 51



DATABASE PERFORMANCE NIXDB_Production

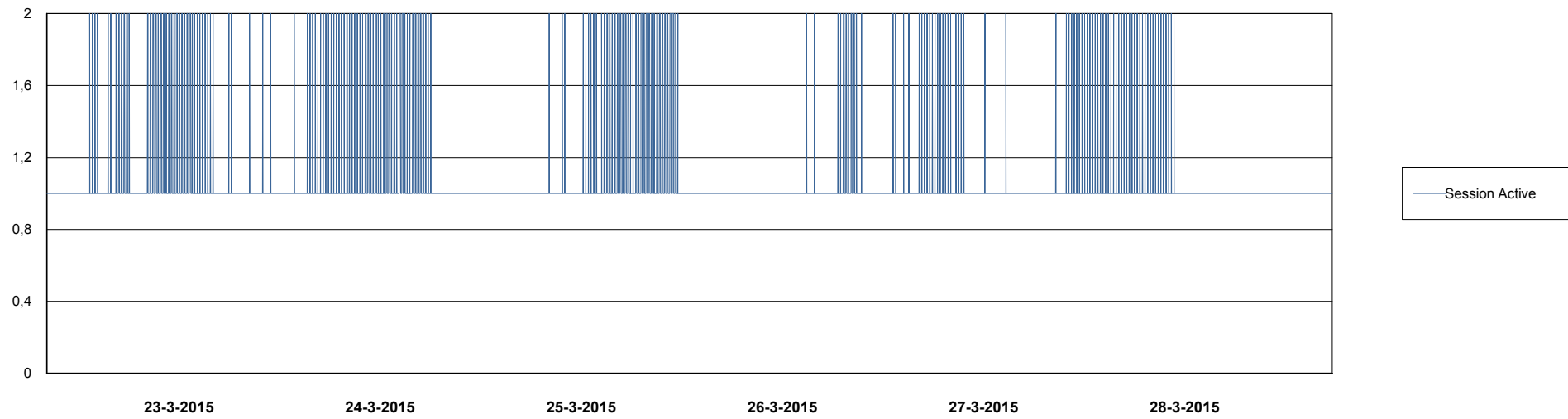
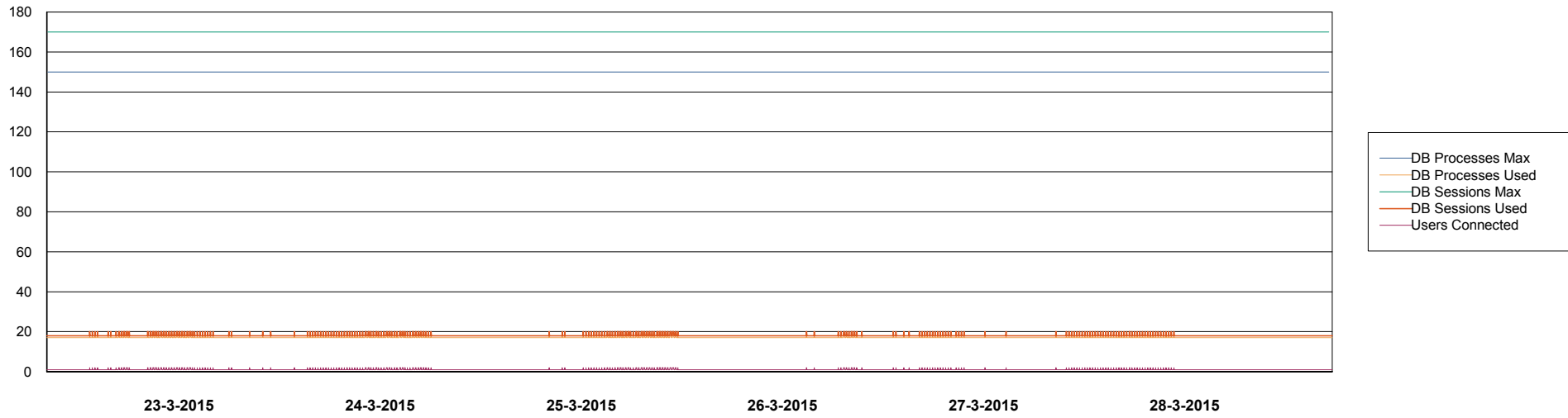


Weekly SLA Customer Report

Customer NIX_Production
Database ID 51



DATABASE PERFORMANCE NIXDB_Standby



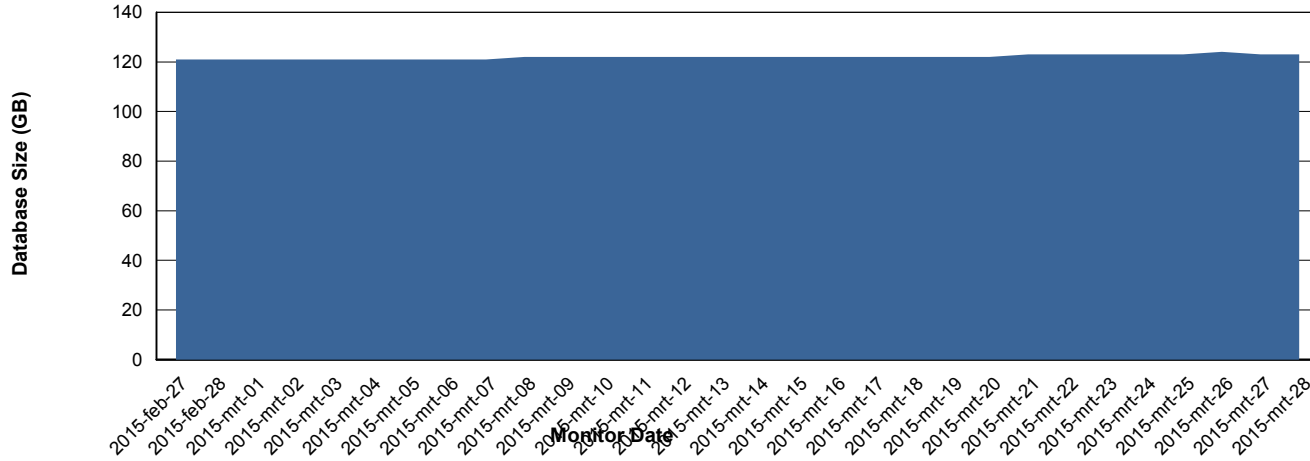
Weekly SLA Customer Report

Customer NIX_Production
Database ID 51



=====
DATABASE SIZE NIXDB_Production
=====

Database growth over last month



Weekly SLA Customer Report

Customer NIX_Production
 Database ID 51



=====
 DATABASE TABLESPACES NIXDB_BI
 =====
 TOTAL DATABASE SIZE PER TABLESPACE

Date	Tablespace Name	Filesize (Gb)	Usedsize (Gb)	Percentage free
28-3-2015	ABSDATA	28	20	29
	INDX	44	32	27
27-3-2015	ABSDATA	28	20	29
	INDX	44	32	27
26-3-2015	ABSDATA	28	20	29
	INDX	44	32	27
25-3-2015	ABSDATA	28	20	29
	INDX	44	32	27
24-3-2015	ABSDATA	28	20	29
	INDX	44	32	27
23-3-2015	ABSDATA	28	20	29
	INDX	44	32	27
22-3-2015	ABSDATA	28	20	29
	INDX	44	32	27

Weekly SLA Customer Report

Customer NIX_Production
 Database ID 51



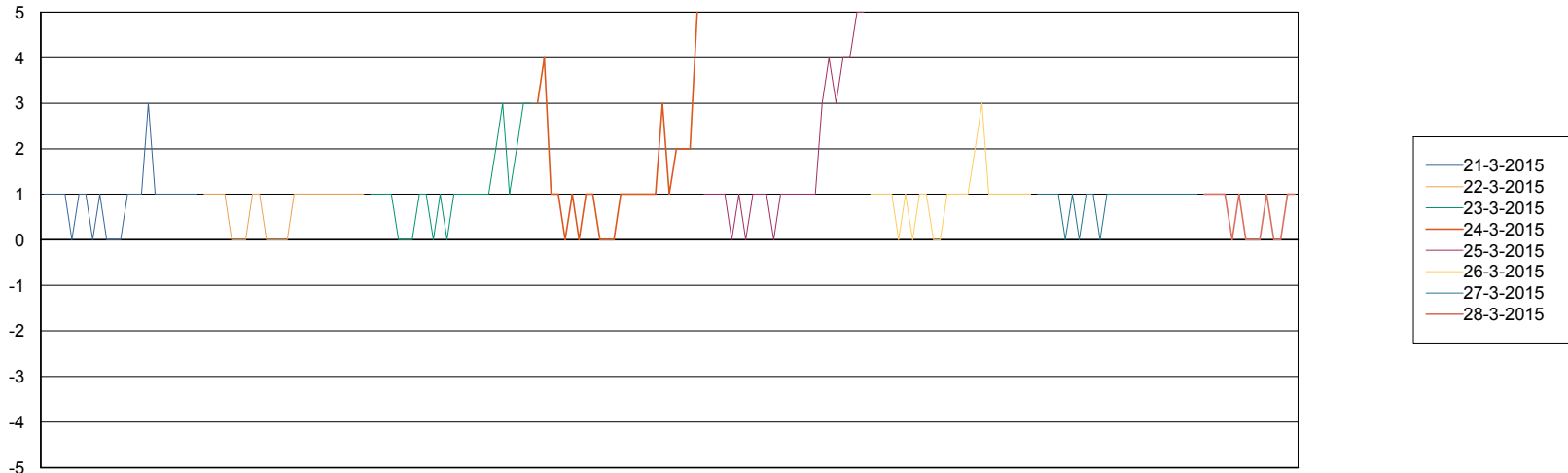
=====
 DATABASE TABLESPACES NIXDB_Production
 =====

TOTAL DATABASE SIZE PER TABLESPACE

Date	Tablespace Name	Filesize (Gb)	Usedsize (Gb)	Percentage free
28-3-2015	ABSDATA	40	32	20
	INDX	109	89	18
27-3-2015	ABSDATA	40	32	20
	INDX	109	89	18
26-3-2015	ABSDATA	40	32	20
	INDX	109	89	18
25-3-2015	ABSDATA	40	31	23
	INDX	109	89	18
24-3-2015	ABSDATA	40	31	23
	INDX	109	89	18
23-3-2015	ABSDATA	40	31	23
	INDX	109	88	19
22-3-2015	ABSDATA	40	31	23
	INDX	109	88	19

=====
 STANDBY DATABASE HEALTH NIX_Production
 =====

Recovery lag for last 7 days



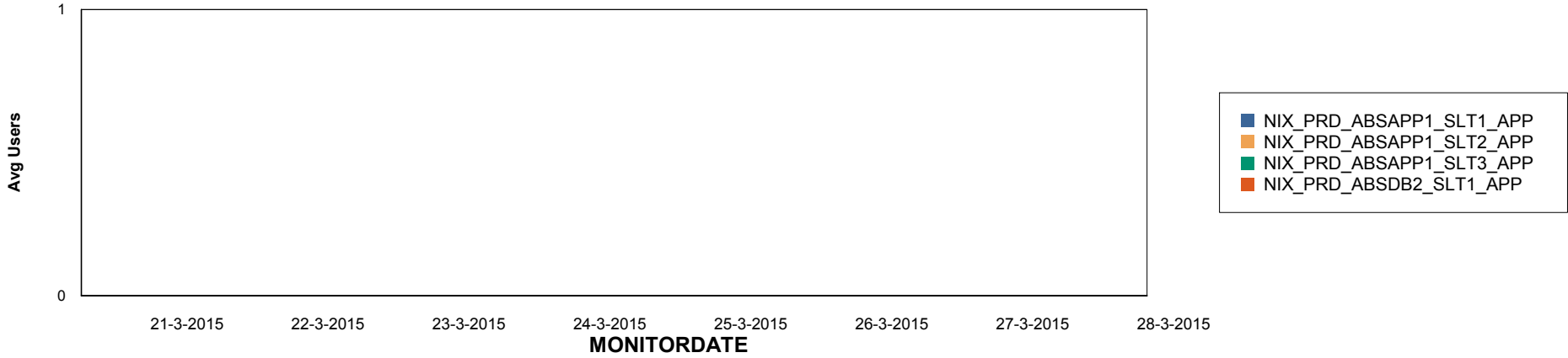
Weekly SLA Customer Report

Customer NIX_Production
Database ID 51

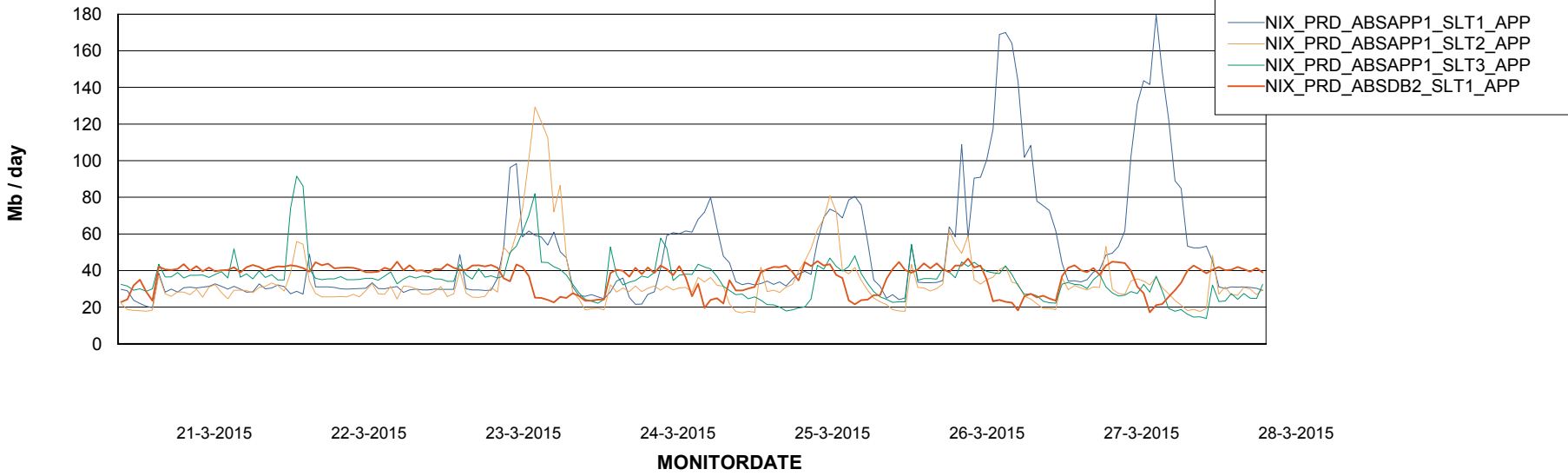


=====
ABSolute Application Server Services
=====

Disaster per ABS Server



Avg memory used per ABS Server Service



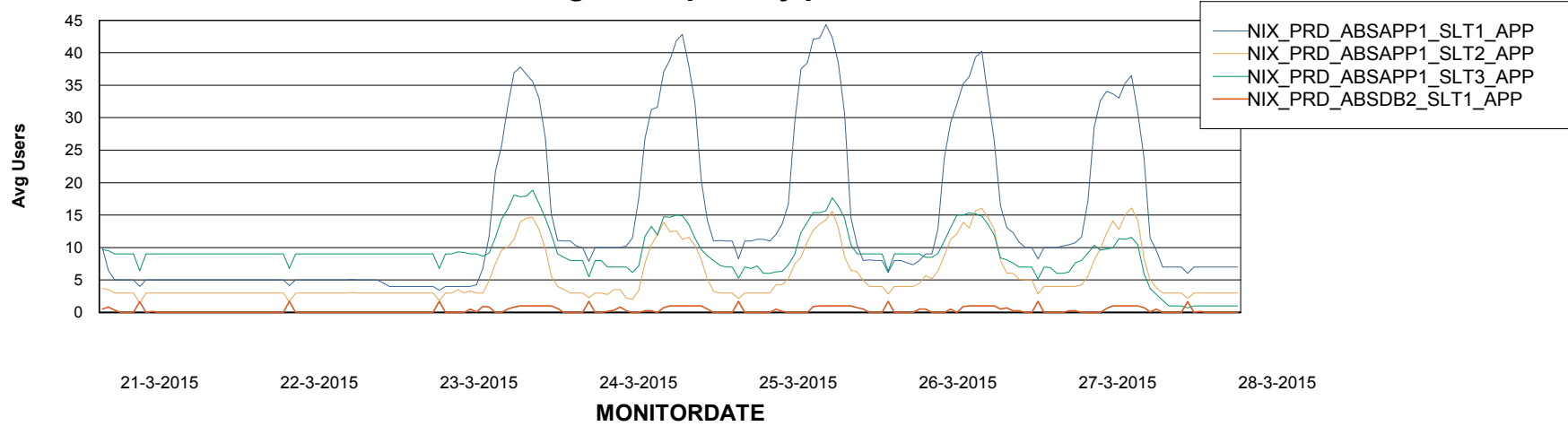
Weekly SLA Customer Report

Customer NIX_Production
Database ID 51



=====
ABSolute Application Server Services
=====

Avg users per day per ABS server



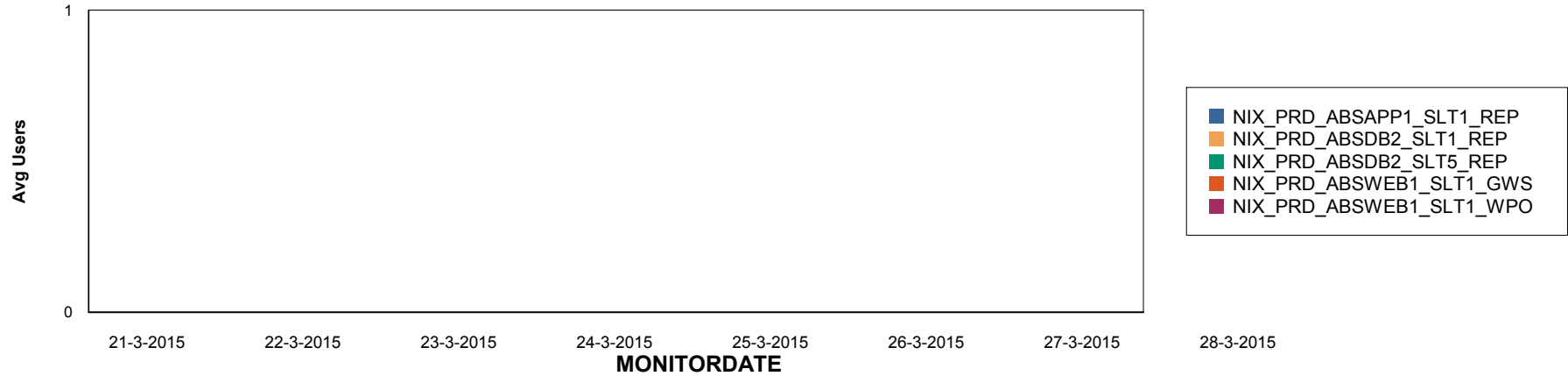
Weekly SLA Customer Report

Customer NIX_Production
Database ID 51

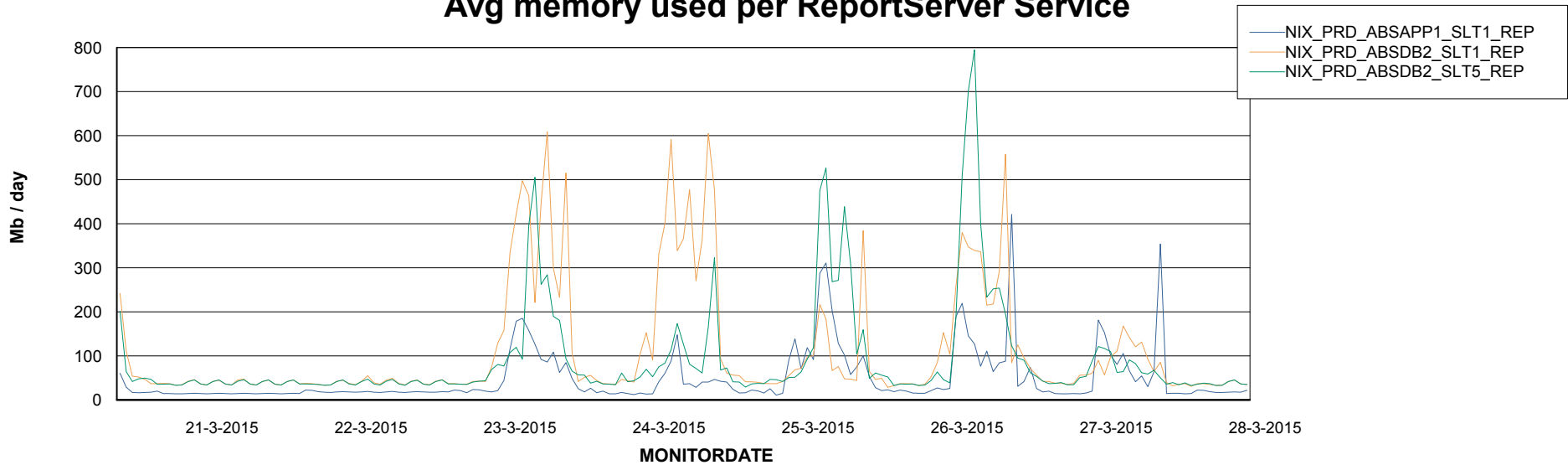


=====
ABSolute Application ReportServer Services
=====

Disaster per ReportServer



Avg memory used per ReportServer Service



Weekly SLA Customer Report

Customer NIX_Production
Database ID 51



Disaster per ABS component

