

Weekly SLA Customer Report

Customer NIX_Production
 Database ID 51



=====
 HARDDISK USAGE NIX_PRD_ABSAPP1
 =====

	Total disk space on C (GB)	Free disk space on C (GB)
21-3-2015	136	86
20-3-2015	136	86
19-3-2015	136	86
18-3-2015	136	86
17-3-2015	136	86
16-3-2015	136	86
15-3-2015	136	86

=====
 HARDDISK USAGE NIX_PRD_ABSWEB1
 =====

	Total disk space on C (GB)	Free disk space on C (GB)	Total disk space on D (GB)
21-3-2015	930	730	3
20-3-2015	930	730	3
19-3-2015	930	730	3
18-3-2015	930	731	3
17-3-2015	930	731	3
16-3-2015	930	732	3
15-3-2015	930	732	3

Weekly SLA Customer Report

Customer NIX_Production
 Database ID 51



=====
 HARDDISK USAGE NIX_PRD_ORACLE_B11
 =====

	Total disk space on C (GB)	Free disk space on C (GB)	Total disk space on D (GB)	Free disk space on D (GB)	Total disk space on E (GB)	Free disk space on E (GB)
21-3-2015	139	88	279	169	99	27
20-3-2015	139	88	279	169	99	27
19-3-2015	139	88	279	169	99	27
18-3-2015	139	88	279	169	99	27
17-3-2015	139	88	279	169	99	27
16-3-2015	139	89	279	169	99	27
15-3-2015	139	89	279	169	99	27

=====
 HARDDISK USAGE NIX_PRD_ORCDB1
 =====

	Total disk space on C (GB)	Free disk space on C (GB)	Total disk space on D (GB)	Free disk space on D (GB)	Total disk space on E (GB)	Free disk space on E (GB)
21-3-2015	136	67	136	27	136	47
20-3-2015	136	67	136	27	136	49
19-3-2015	136	67	136	27	136	49
18-3-2015	136	67	136	27	136	50
17-3-2015	136	67	136	27	136	50
16-3-2015	136	67	136	27	136	49
15-3-2015	136	67	136	27	136	49

Weekly SLA Customer Report

Customer NIX_Production
 Database ID 51



=====

HARDDISK USAGE NIX_PRD_ORCDB2

=====

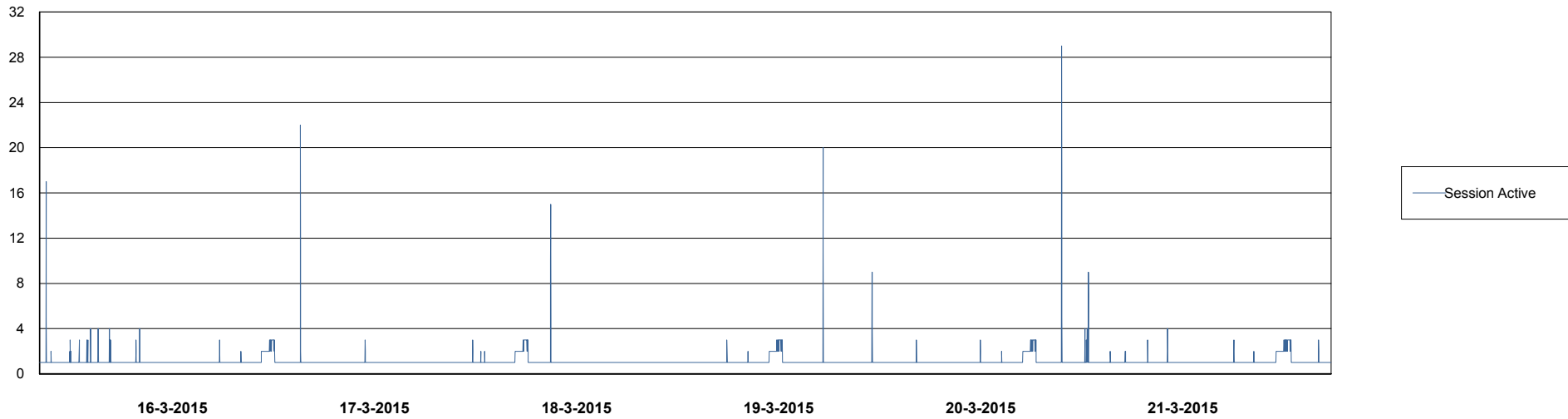
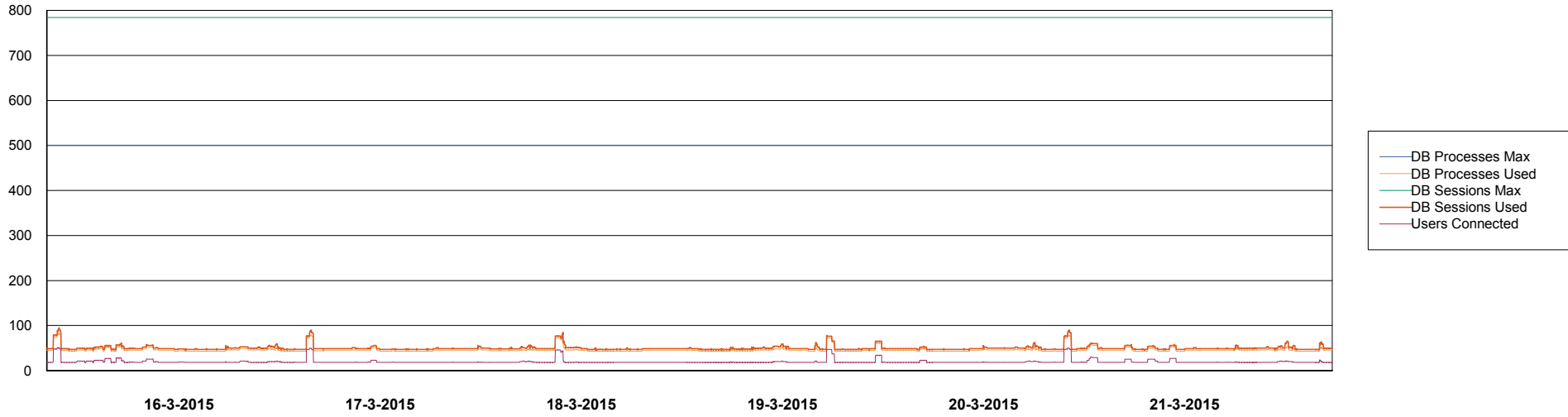
	Total disk space on C (GB)	Free disk space on C (GB)	Total disk space on D (GB)	Free disk space on D (GB)	Total disk space on E (GB)	Free disk space on E (GB)
21-3-2015	279	63	279	43	279	177
20-3-2015	279	63	279	43	279	179
19-3-2015	279	62	279	43	279	174
18-3-2015	279	63	279	43	279	102
17-3-2015	279	63	279	43	279	57
16-3-2015	279	63	279	43	279	90
15-3-2015	279	63	279	43	279	122

Weekly SLA Customer Report

Customer NIX_Production
Database ID 51



DATABASE PERFORMANCE NIXDB_BI

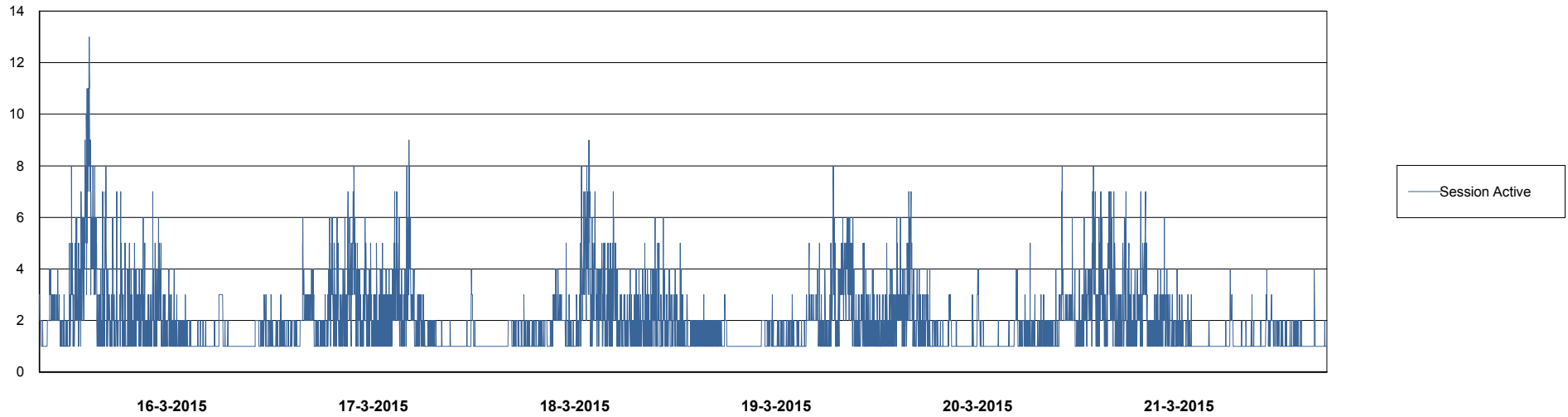
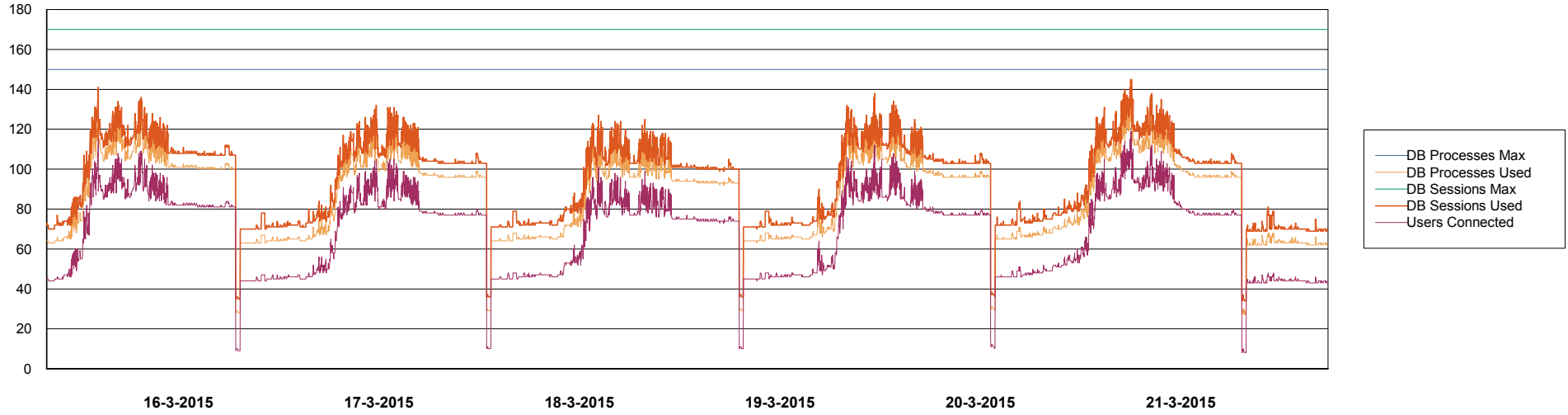


Weekly SLA Customer Report

Customer NIX_Production
Database ID 51



DATABASE PERFORMANCE NIXDB_Production

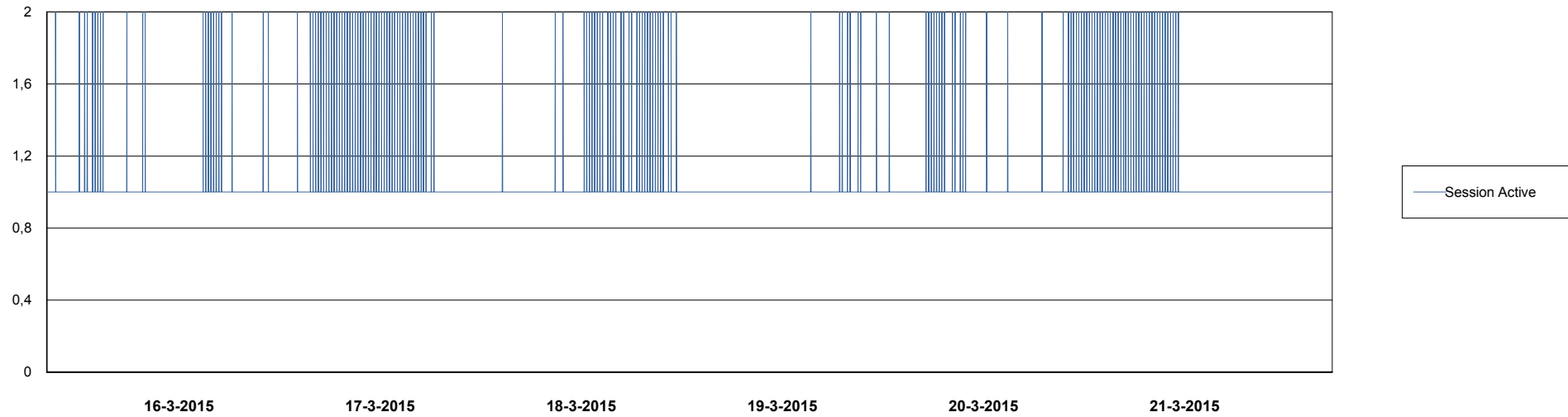
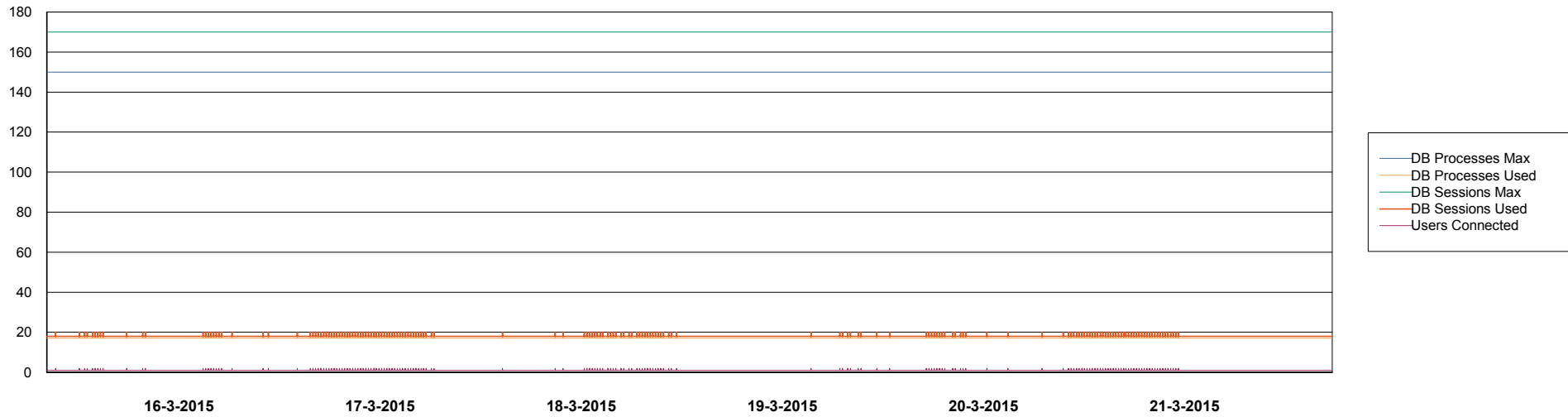


Weekly SLA Customer Report

Customer NIX_Production
Database ID 51



DATABASE PERFORMANCE NIXDB_Standby



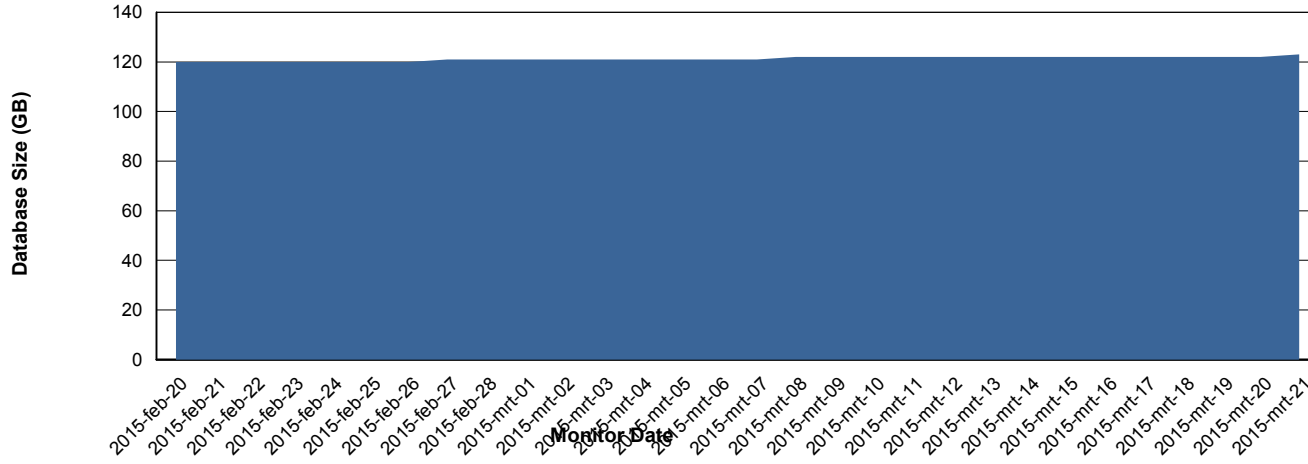
Weekly SLA Customer Report

Customer NIX_Production
Database ID 51



=====
DATABASE SIZE NIXDB_Production
=====
=====

Database growth over last month



Weekly SLA Customer Report

Customer NIX_Production
 Database ID 51



=====
 DATABASE TABLESPACES NIXDB_BI
 =====

TOTAL DATABASE SIZE PER TABLESPACE

Date	Tablespace Name	Filesize (Gb)	Usedsize (Gb)	Percentage free
21-3-2015	ABSDATA	28	20	29
	INDX	44	32	27
20-3-2015	ABSDATA	28	20	29
	INDX	44	32	27
19-3-2015	ABSDATA	28	20	29
	INDX	44	31	30
18-3-2015	ABSDATA	28	20	29
	INDX	44	31	30
17-3-2015	ABSDATA	28	20	29
	INDX	44	31	30
16-3-2015	ABSDATA	28	20	29
	INDX	44	31	30
15-3-2015	ABSDATA	28	20	29
	INDX	44	31	30

Weekly SLA Customer Report

Customer NIX_Production
 Database ID 51



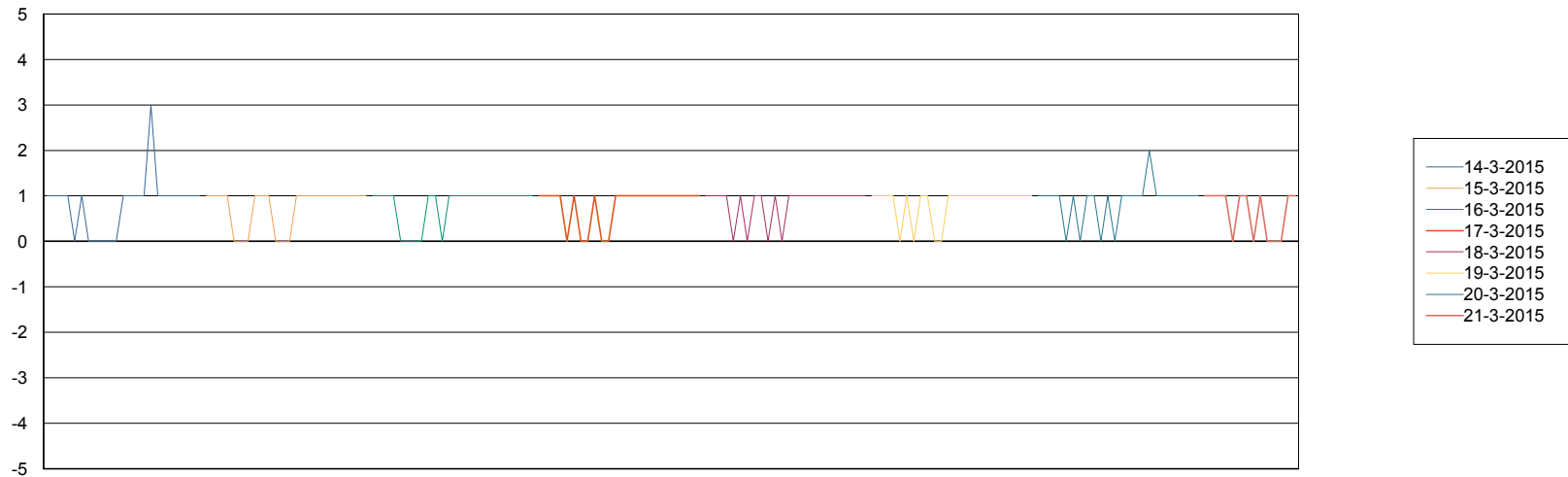
=====
 DATABASE TABLESPACES NIXDB_Production
 =====

TOTAL DATABASE SIZE PER TABLESPACE

Date	Tablespace Name	Filesize (Gb)	Usedsize (Gb)	Percentage free
21-3-2015	ABSDATA	40	31	23
	INDX	109	88	19
20-3-2015	ABSDATA	40	31	23
	INDX	109	88	19
19-3-2015	ABSDATA	40	31	23
	INDX	109	88	19
18-3-2015	ABSDATA	40	31	23
	INDX	109	88	19
17-3-2015	ABSDATA	40	31	23
	INDX	109	88	19
16-3-2015	ABSDATA	40	31	23
	INDX	109	88	19
15-3-2015	ABSDATA	40	31	23
	INDX	109	88	19

=====
 STANDBY DATABASE HEALTH NIX_Production
 =====

Recovery lag for last 7 days



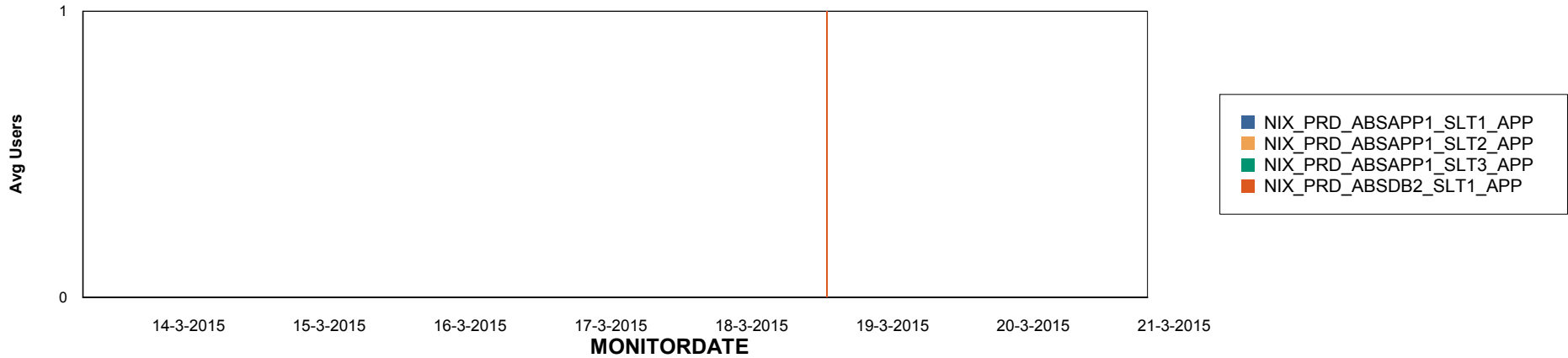
Weekly SLA Customer Report

Customer NIX_Production
Database ID 51

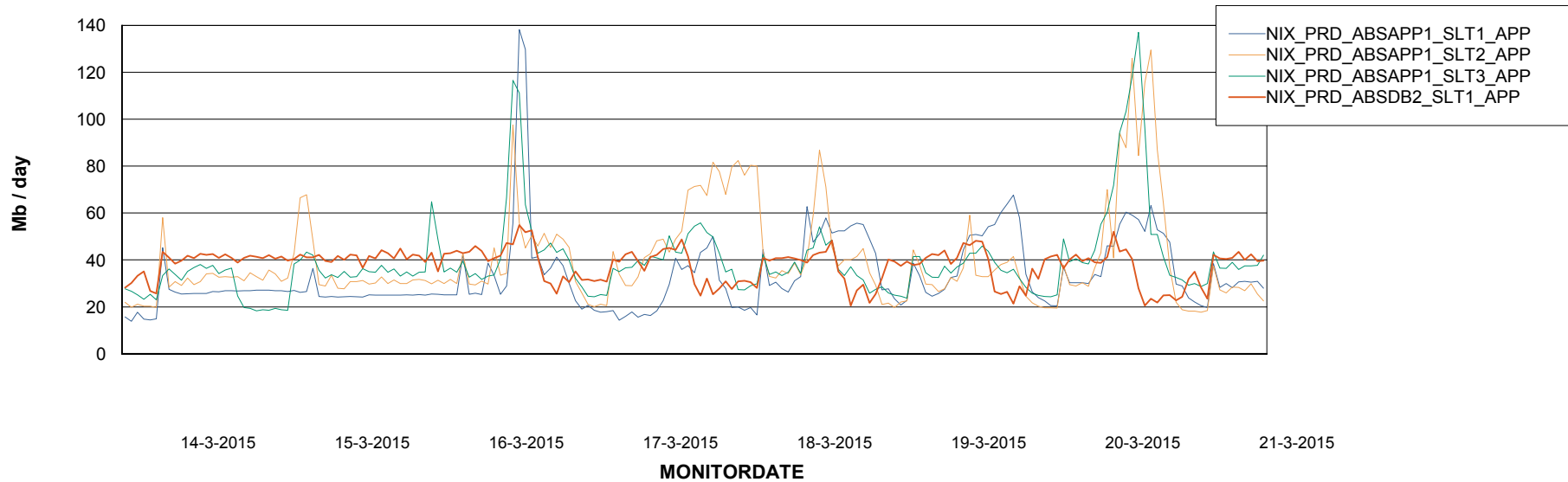


ABSolute Application Server Services

Disaster per ABS Server



Avg memory used per ABS Server Service



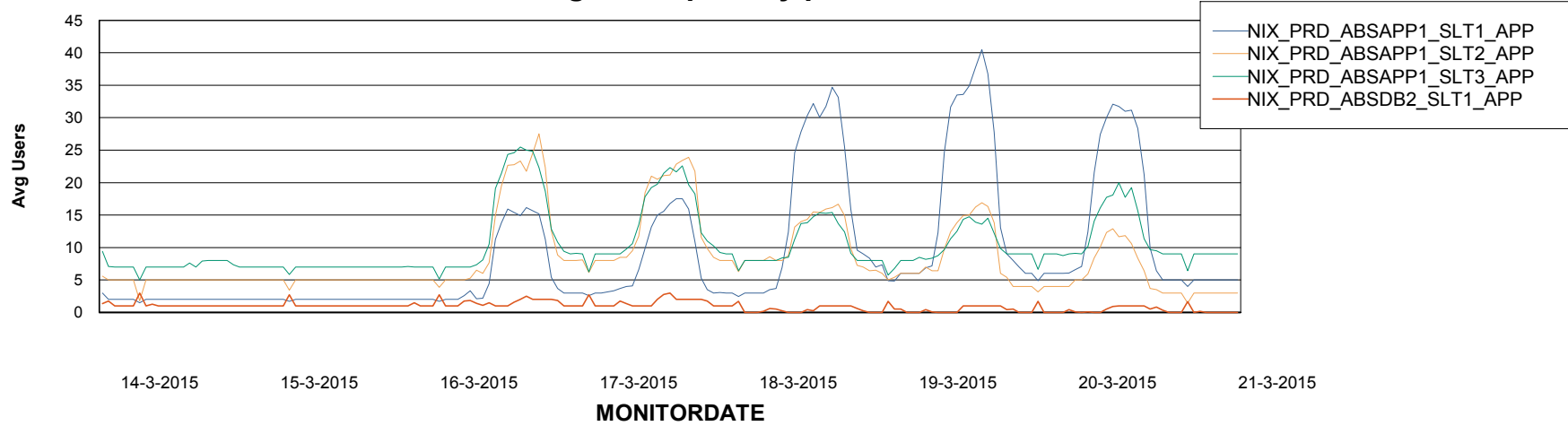
Weekly SLA Customer Report

Customer NIX_Production
Database ID 51



=====
ABSolute Application Server Services
=====

Avg users per day per ABS server



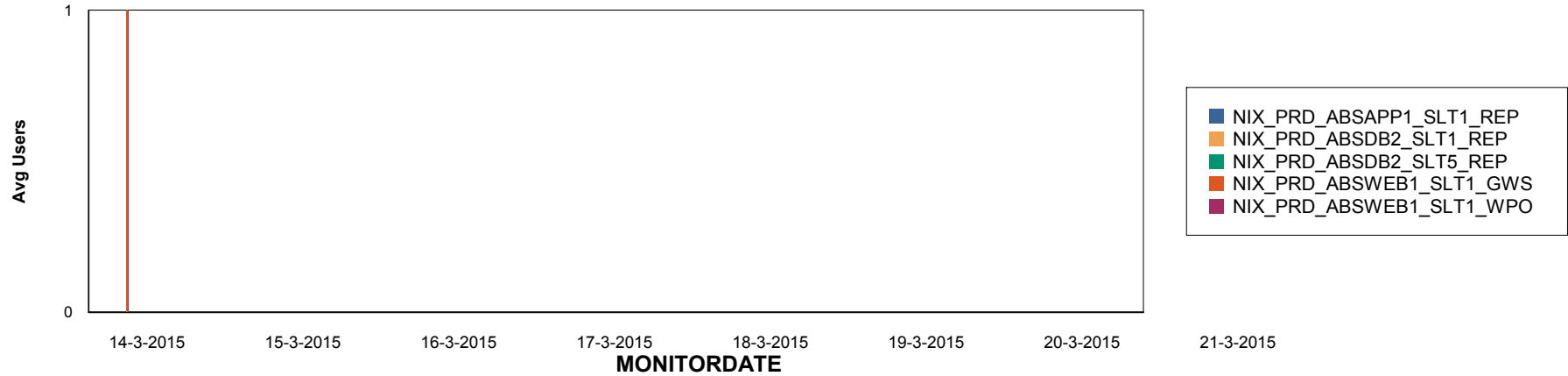
Weekly SLA Customer Report

Customer NIX_Production
Database ID 51

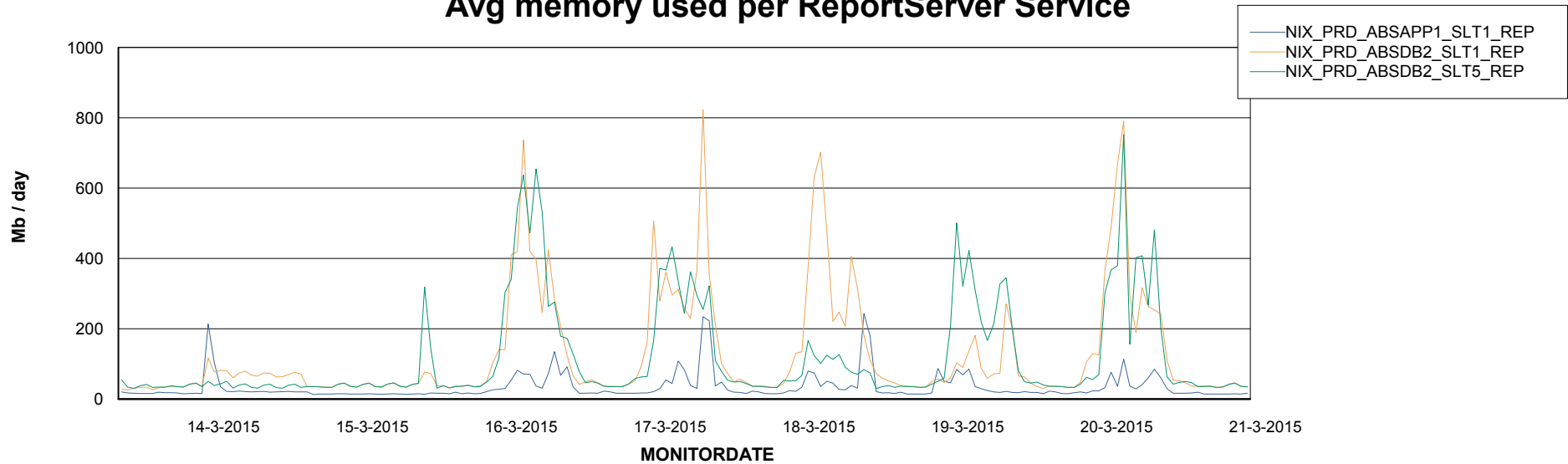


=====
ABSolute Application ReportServer Services
=====

Disaster per ReportServer



Avg memory used per ReportServer Service



Weekly SLA Customer Report

Customer NIX_Production
Database ID 51



Disaster per ABS component

