

# Weekly SLA Customer Report

Customer LLG\_Production  
 Database ID 53



=====  
 HARDDISK USAGE LLG\_PRD\_BI01  
 =====

	Total disk space on C (GB)	Free disk space on C (GB)
21-3-2015	559	358
20-3-2015	559	358
19-3-2015	559	358
18-3-2015	559	358
17-3-2015	559	359
16-3-2015	559	359
15-3-2015	559	359

=====  
 HARDDISK USAGE LLG\_PRD\_OR01  
 =====

	Total disk space on C (GB)	Free disk space on C (GB)	Total disk space on D (GB)	Free disk space on D (GB)
21-3-2015	279	177	600	234
20-3-2015	279	177	600	235
19-3-2015	279	177	600	237
18-3-2015	279	177	600	238
17-3-2015	279	177	600	239
16-3-2015	279	177	600	246
15-3-2015	279	177	600	265

## Weekly SLA Customer Report

Customer      LLG\_Production  
 Database ID    53



=====  
 HARDDISK USAGE    LLG\_PRD\_OR2  
 =====

	Total disk space on C (GB)	Free disk space on C (GB)	Total disk space on D (GB)	Free disk space on D (GB)
21-3-2015	293	248	545	307
20-3-2015	293	248	545	308
19-3-2015	293	248	545	310
18-3-2015	293	248	545	311
17-3-2015	293	248	545	313
16-3-2015	293	248	545	323
15-3-2015	293	248	545	338

=====  
 HARDDISK USAGE    LLG\_PRD\_vABS01  
 =====

	Total disk space on C (GB)	Free disk space on C (GB)	Total disk space on D (GB)	Free disk space on D (GB)
21-3-2015	150	37	150	143
20-3-2015	150	32	150	143
19-3-2015	150	32	150	143
18-3-2015	150	32	150	143
17-3-2015	150	32	150	143
16-3-2015	150	32	150	143
15-3-2015	150	32	150	143

## Weekly SLA Customer Report

Customer      LLG\_Production  
 Database ID    53



=====  
 HARDDISK USAGE    LLG\_PRD\_vABS02  
 =====

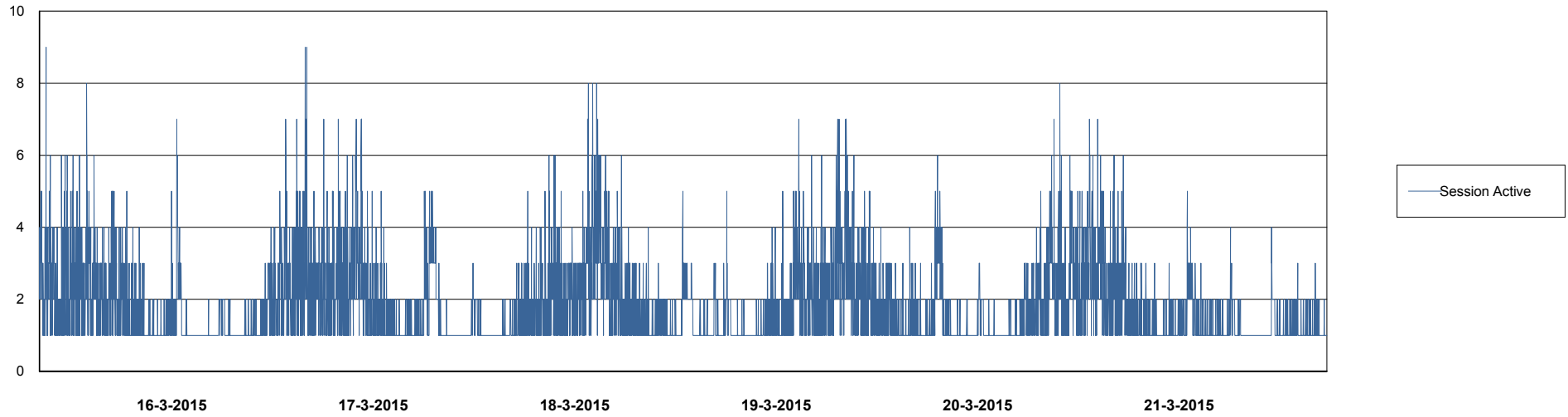
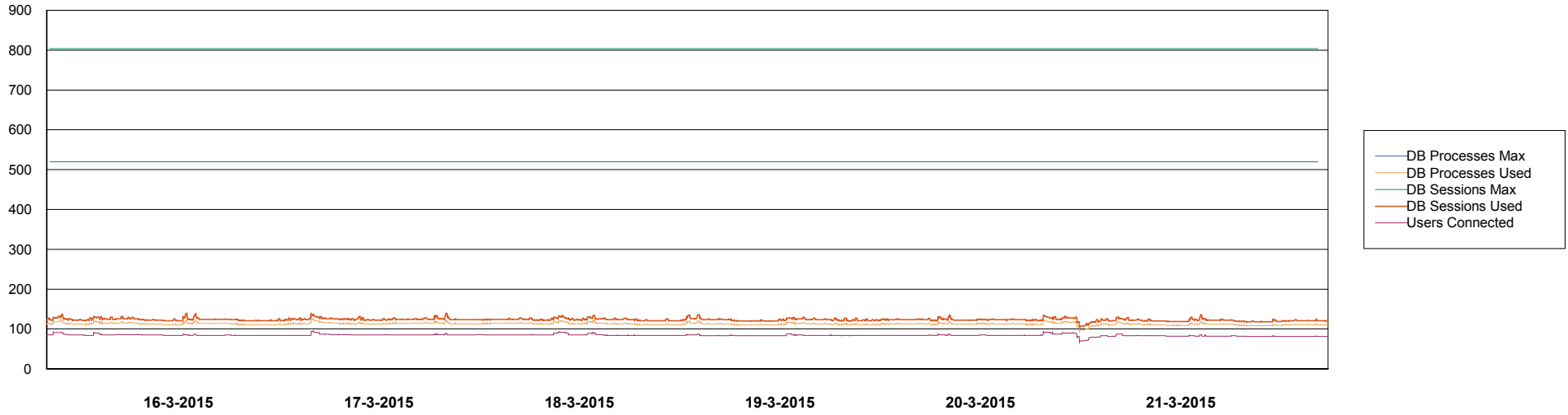
	Total disk space on C (GB)	Free disk space on C (GB)	Total disk space on D (GB)	Free disk space on D (GB)
21-3-2015	150	56	150	125
20-3-2015	150	58	150	125
19-3-2015	150	50	150	125
18-3-2015	150	50	150	125
17-3-2015	150	50	150	125
16-3-2015	150	50	150	125
15-3-2015	150	50	150	125

# Weekly SLA Customer Report

Customer LLG\_Production  
Database ID 53



DATABASE PERFORMANCE LLGDB\_Production

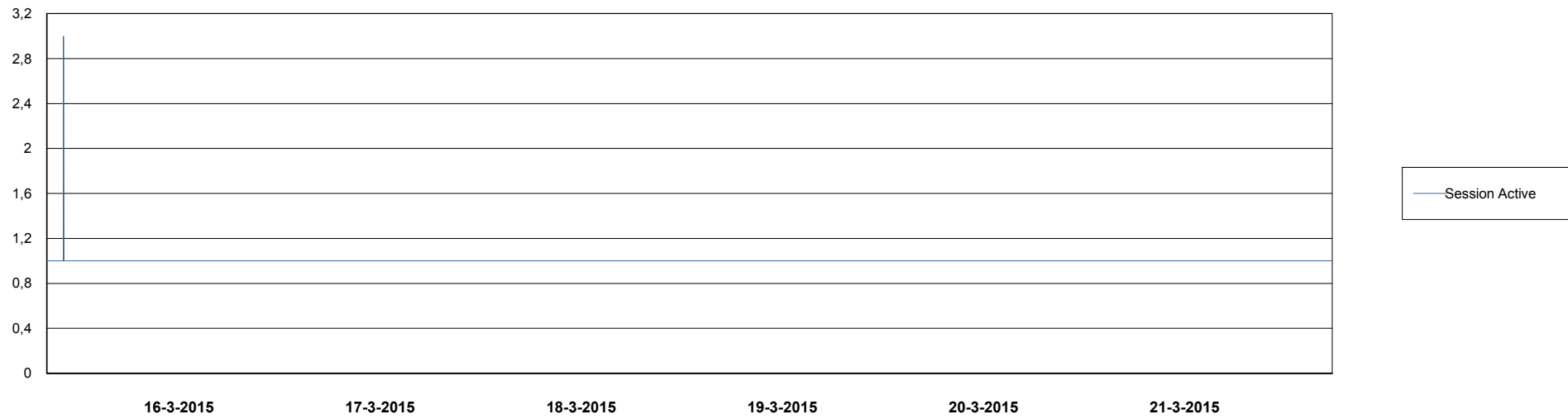
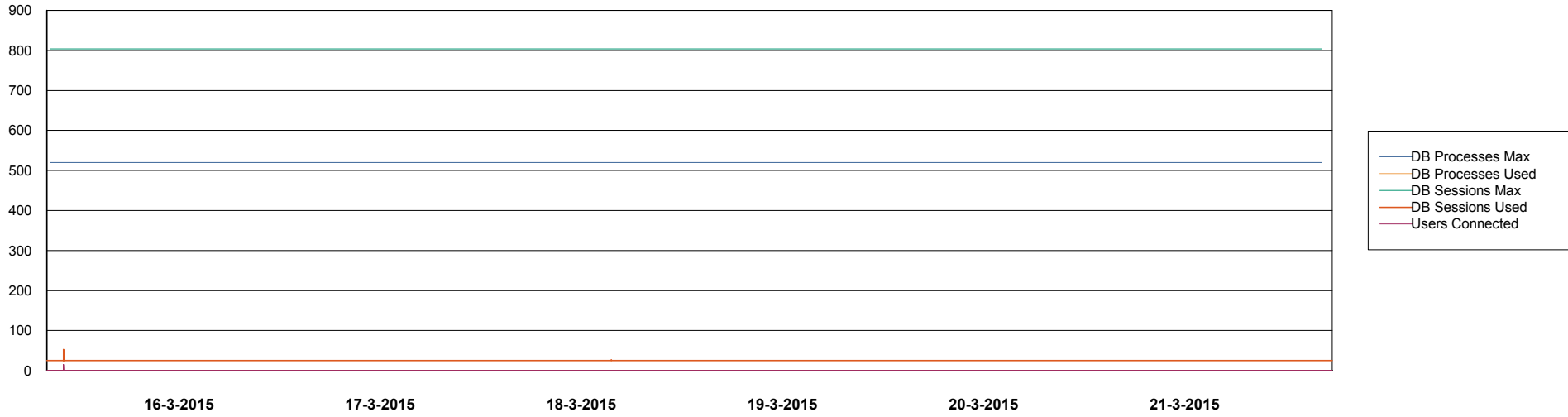


# Weekly SLA Customer Report

Customer LLG\_Production  
Database ID 53



DATABASE PERFORMANCE LLGDB\_Standby



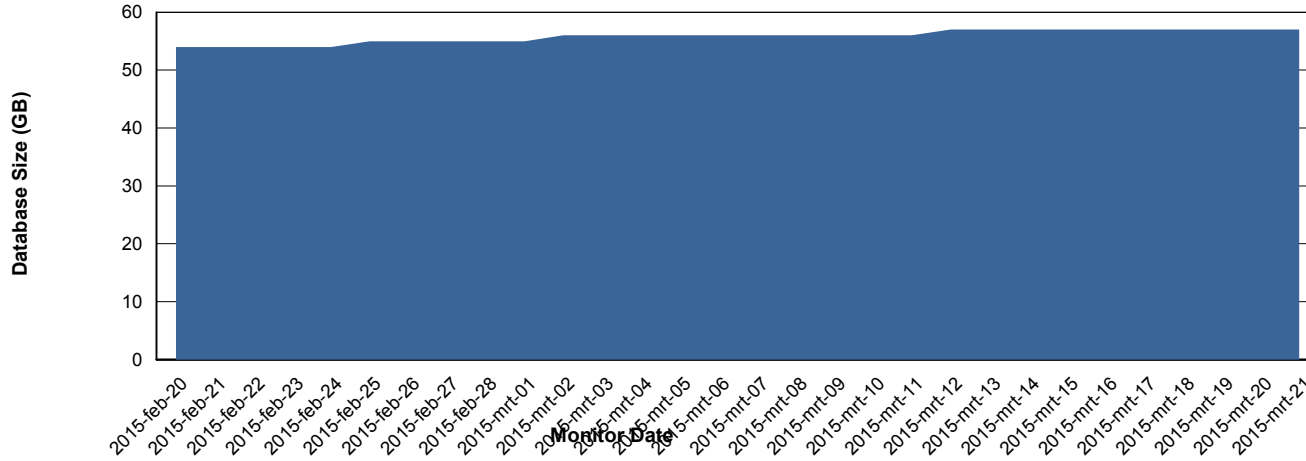
# Weekly SLA Customer Report

Customer LLG\_Production  
 Database ID 53



=====  
 DATABASE SIZE LLGDB\_Production  
 =====

## Database growth over last month



=====  
 DATABASE TABLESPACES LLGDB\_Production  
 =====

### TOTAL DATABASE SIZE PER TABLESPACE

Date	Tablespace Name	Filesize (Gb)	Usedsize (Gb)	Percentage free
21-3-2015	ABSDATA	28	20	29
	INDX	44	35	20
20-3-2015	ABSDATA	28	20	29
	INDX	44	35	20
19-3-2015	ABSDATA	28	20	29
	INDX	44	35	20
18-3-2015	ABSDATA	28	20	29
	INDX	44	35	20
17-3-2015	ABSDATA	28	20	29
	INDX	44	35	20
16-3-2015	ABSDATA	28	20	29
	INDX	44	35	20
15-3-2015	ABSDATA	28	20	29
	INDX	44	34	23

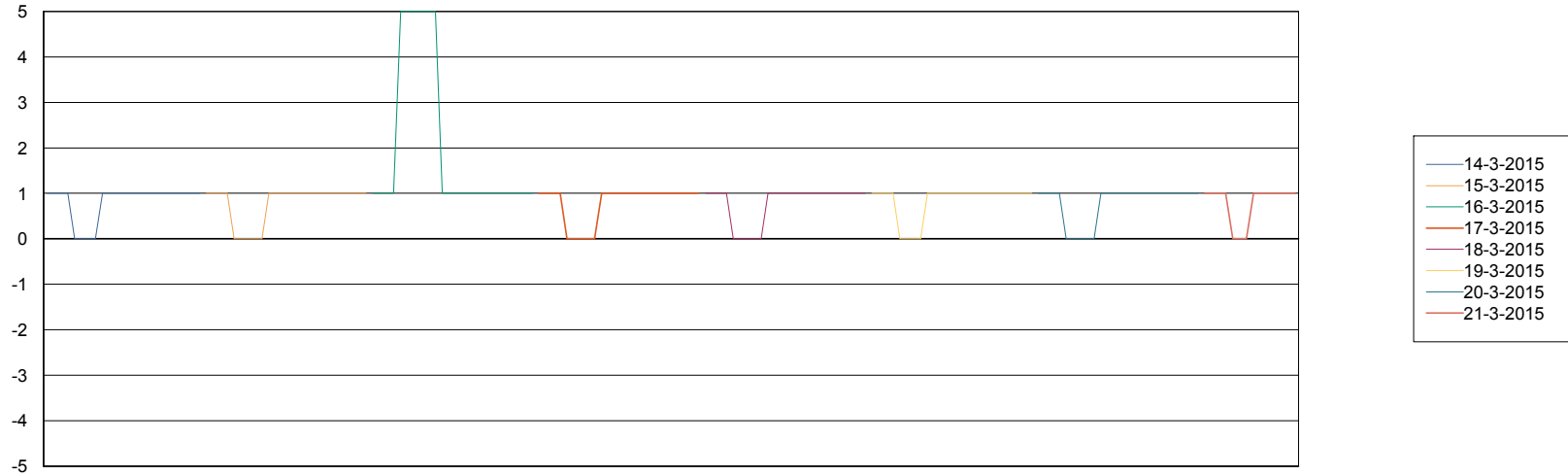
# Weekly SLA Customer Report

Customer LLG\_Production  
Database ID 53



=====  
STANDBY DATABASE HEALTH LLG\_Production  
=====

### Recovery lag for last 7 days



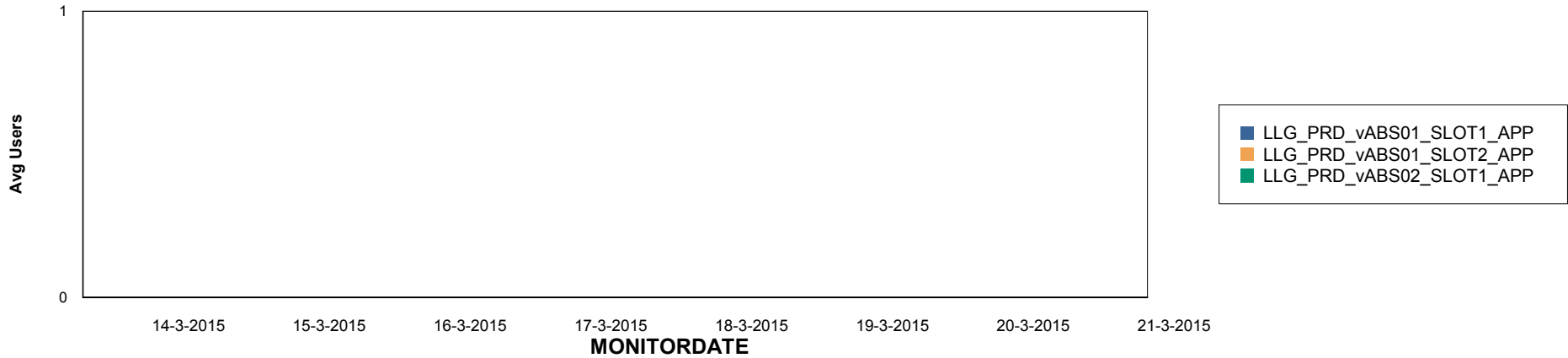
# Weekly SLA Customer Report

Customer LLG\_Production  
Database ID 53

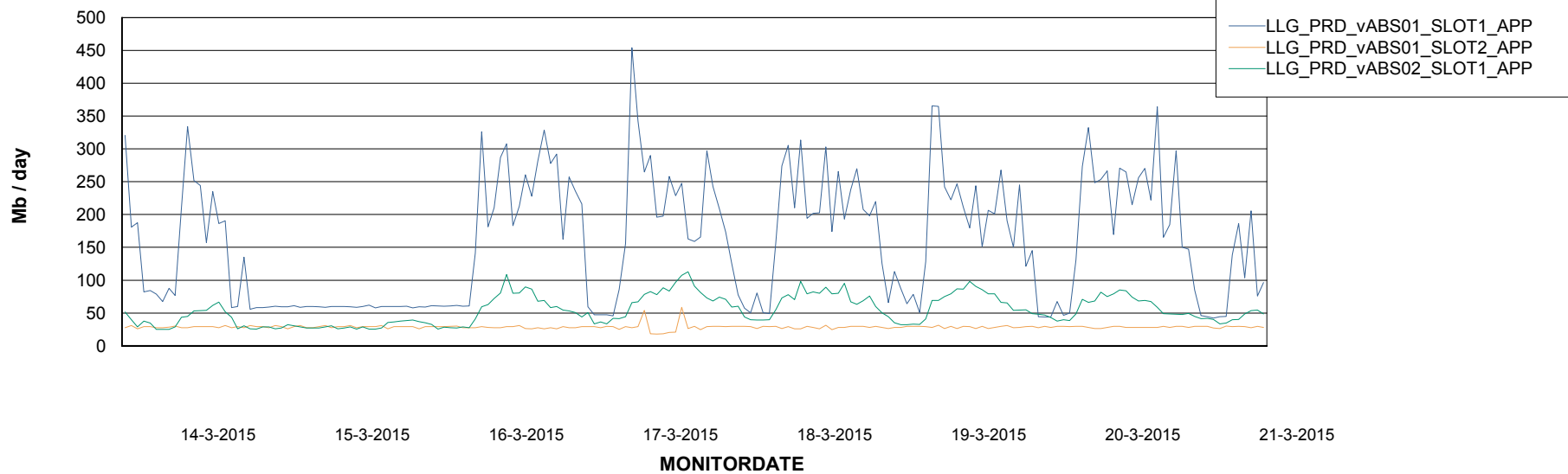


=====  
ABSolute Application Server Services  
=====

## Disaster per ABS Server



## Avg memory used per ABS Server Service



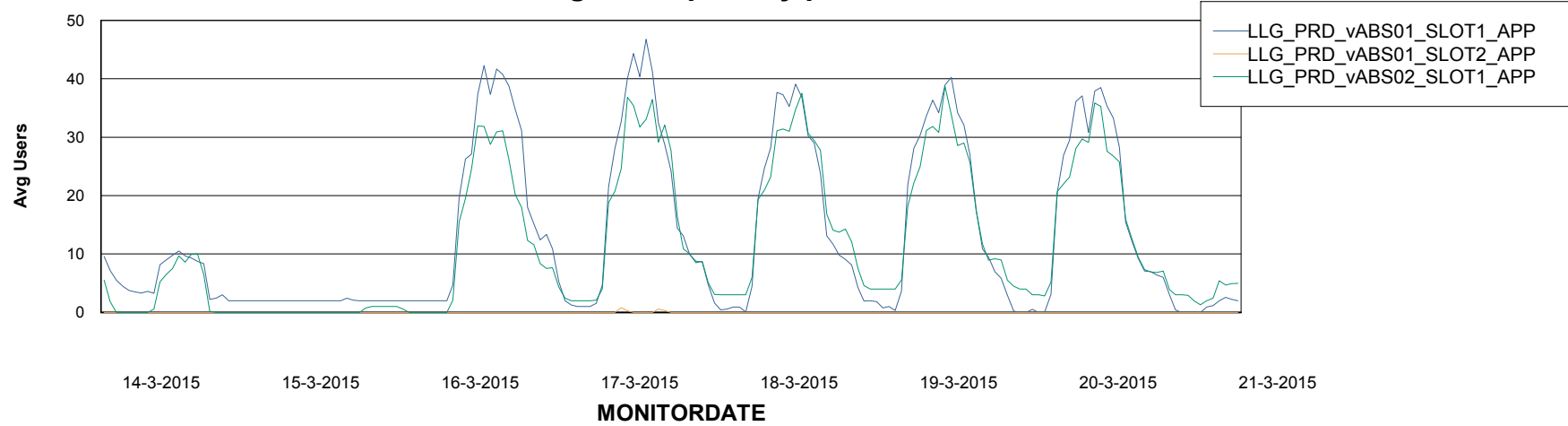
# Weekly SLA Customer Report

Customer LLG\_Production  
Database ID 53



=====  
ABSolute Application Server Services  
=====

### Avg users per day per ABS server



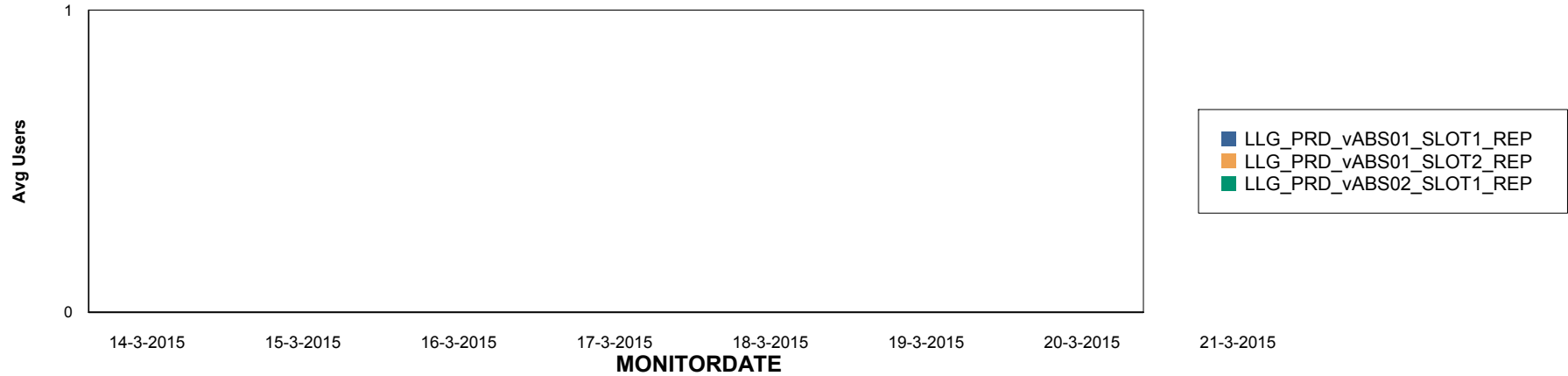
# Weekly SLA Customer Report

Customer LLG\_Production  
Database ID 53

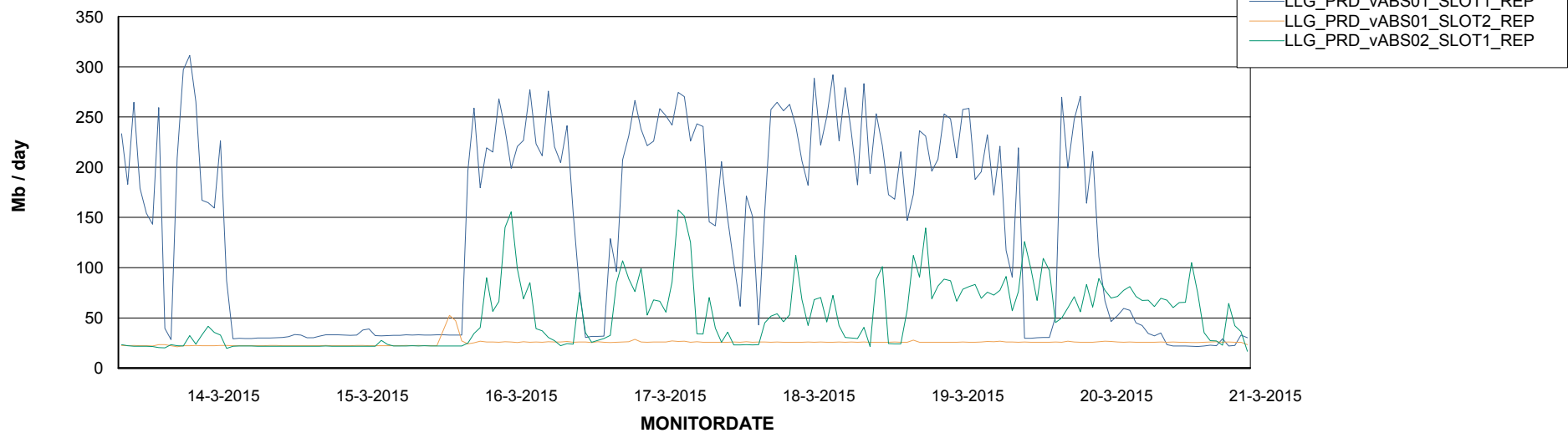


=====  
ABSolute Application ReportServer Services  
=====

## Disaster per ReportServer



## Avg memory used per ReportServer Service



# Weekly SLA Customer Report

Customer LLG\_Production  
Database ID 53



## Disaster per ABS component

