

Weekly SLA Customer Report

Customer RFL_Production
Database ID 36



=====
HARDDISK USAGE RFL_PRD_ORACLE1
=====

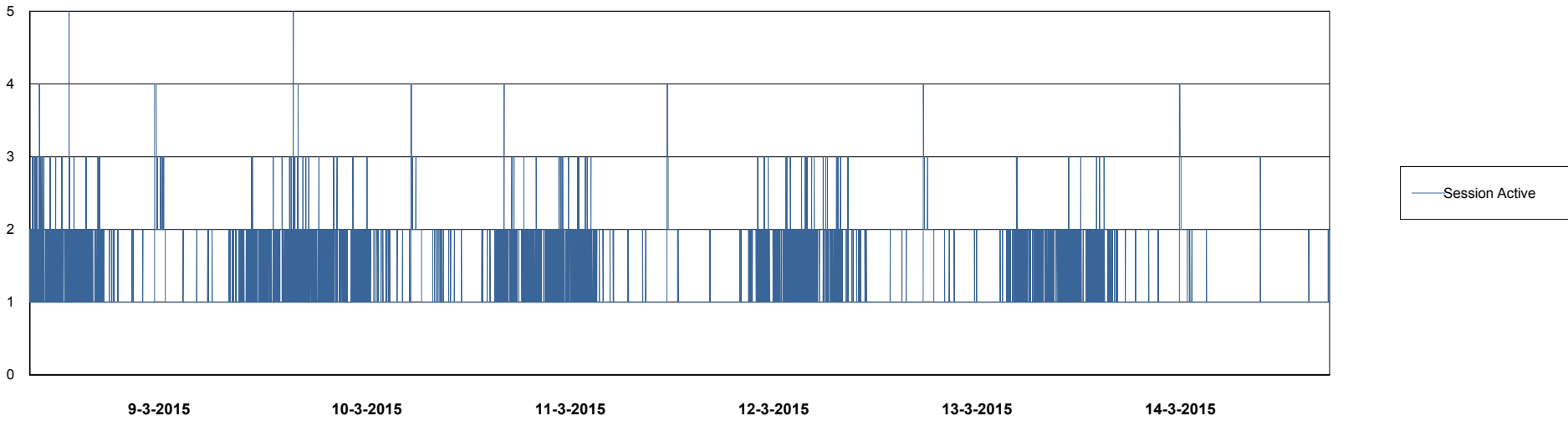
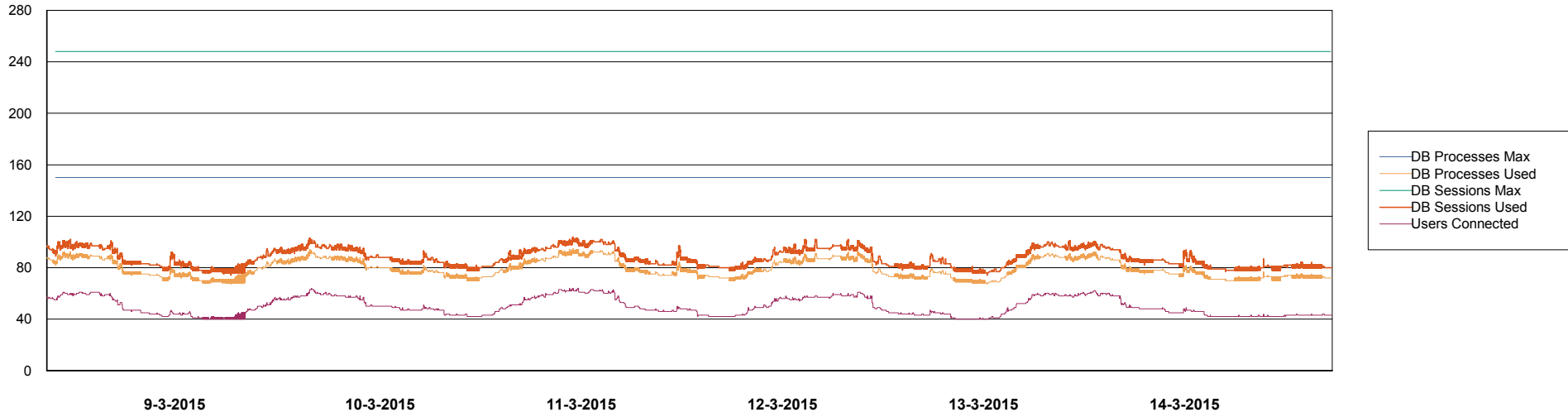
	Total disk space on C (GB)	Free disk space on C (GB)	Total disk space on D (GB)	Free disk space on D (GB)	Total disk space on E (GB)	Free disk space on E (GB)
14-3-2015	279	111	137	93	137	52
13-3-2015	279	111	137	93	137	53
12-3-2015	279	111	137	93	137	53
11-3-2015	279	112	137	93	137	54
10-3-2015	279	112	137	93	137	55
9-3-2015	279	112	137	93	137	56
8-3-2015	279	112	137	93	137	57

Weekly SLA Customer Report

Customer RFL_Production
Database ID 36



DATABASE PERFORMANCE RFLDB_Production

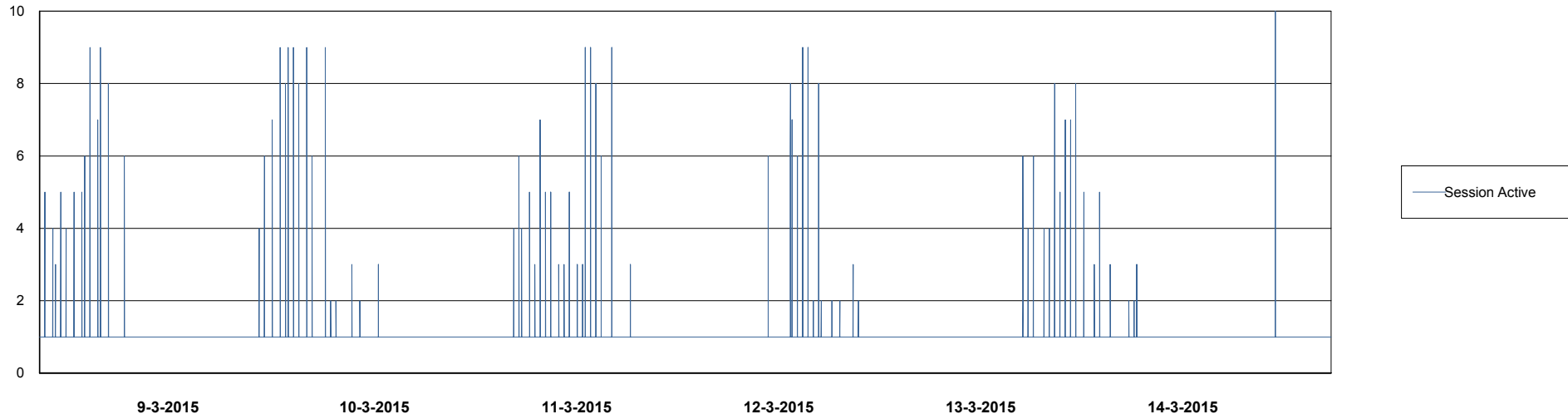
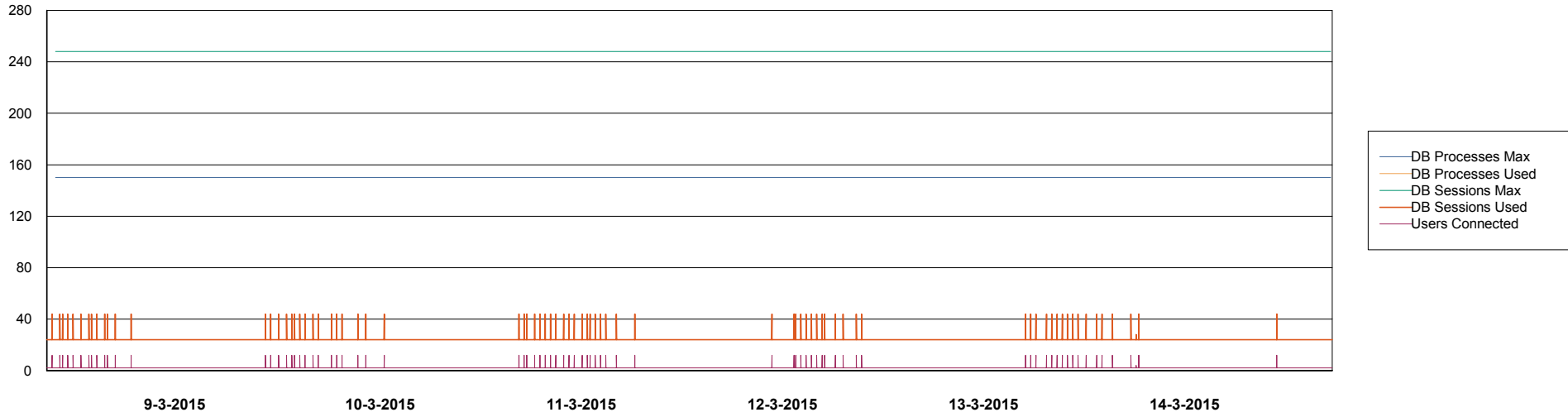


Weekly SLA Customer Report

Customer RFL_Production
Database ID 36



DATABASE PERFORMANCE RFLDB_Standby



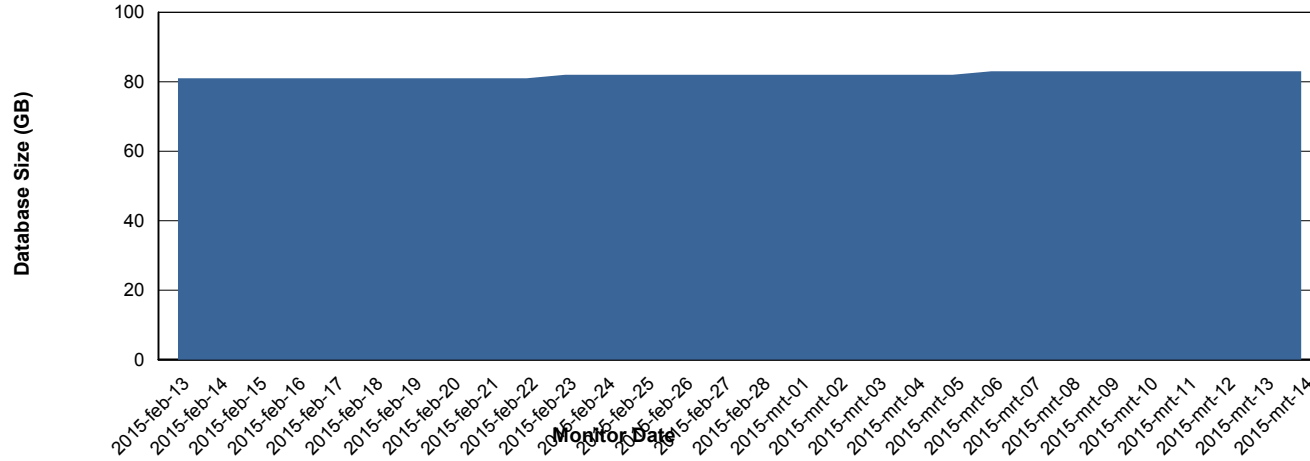
Weekly SLA Customer Report

Customer RFL_Production
 Database ID 36



=====
 DATABASE SIZE RFLDB_Production
 =====

Database growth over last month



=====
 DATABASE TABLESPACES RFLDB_Production
 =====

TOTAL DATABASE SIZE PER TABLESPACE

Date	Tablespace Name	Filesize (Gb)	Usedsize (Gb)	Percentage free
14-3-2015	ABSDATA	28	20	29
	INDX	80	62	23
13-3-2015	ABSDATA	28	20	29
	INDX	80	62	23
12-3-2015	ABSDATA	28	20	29
	INDX	80	62	23
11-3-2015	ABSDATA	28	20	29
	INDX	80	62	23
10-3-2015	ABSDATA	28	20	29
	INDX	80	62	23
9-3-2015	ABSDATA	28	20	29
	INDX	80	62	23
8-3-2015	ABSDATA	28	19	32
	INDX	80	62	23

Weekly SLA Customer Report

Customer RFL_Production
Database ID 36



=====
STANDBY DATABASE HEALTH RFL_Production
=====

Recovery lag for last 7 days

