

## Weekly SLA Customer Report

Customer PHS\_Production  
 Database ID 47



=====  
 HARDDISK USAGE PHS\_BI\_GCAB779a  
 =====

	Total disk space on C (GB)	Free disk space on C (GB)	Total disk space on D (GB)	Free disk space on D (GB)
14-3-2015	150	38	150	39
13-3-2015	150	38	150	39
12-3-2015	150	38	150	39
11-3-2015	150	38	150	39
10-3-2015	150	38	150	39
9-3-2015	150	38	150	39
8-3-2015	150	38	150	39

=====  
 HARDDISK USAGE PHS\_PRD\_GCAB775a  
 =====

	Total disk space on C (GB)	Free disk space on C (GB)	Total disk space on D (GB)	Free disk space on D (GB)	Total disk space on F (GB)	Free disk space on F (GB)
14-3-2015	220	48	75	30	80	60
13-3-2015	220	48	75	30	80	61
12-3-2015	220	48	75	31	80	61
11-3-2015	220	48	75	31	80	61
10-3-2015	220	48	75	32	80	63
9-3-2015	220	48	75	33	80	61
8-3-2015	220	48	75	36	80	62

## Weekly SLA Customer Report

Customer     PHS\_Production  
 Database ID    47



=====  
 HARDDISK USAGE    PHS\_PRD\_GCAB814a  
 =====

	Total disk space on C (GB)	Free disk space on C (GB)	Total disk space on D (GB)	Free disk space on D (GB)
14-3-2015	200	52	75	31
13-3-2015	200	52	75	31
12-3-2015	200	53	75	32
11-3-2015	200	53	75	32
10-3-2015	200	53	75	32
9-3-2015	200	53	75	34
8-3-2015	200	53	75	36

=====  
 HARDDISK USAGE    PHS\_TST\_GCAB778a  
 =====

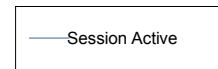
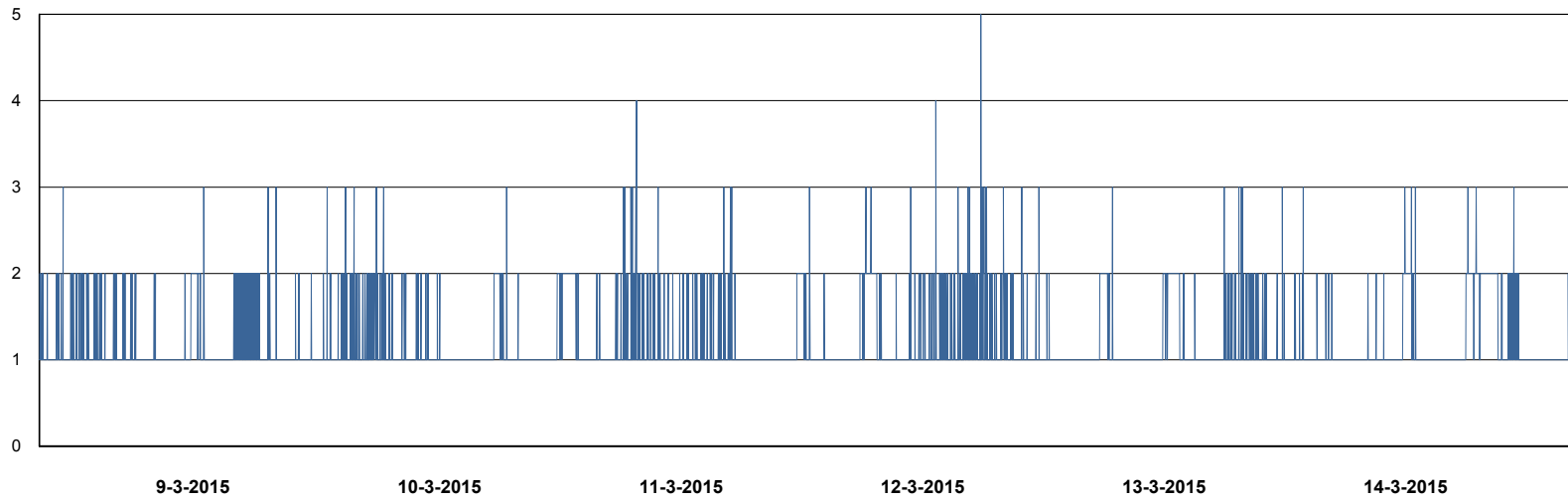
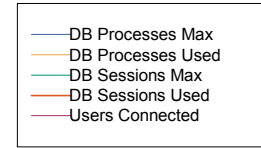
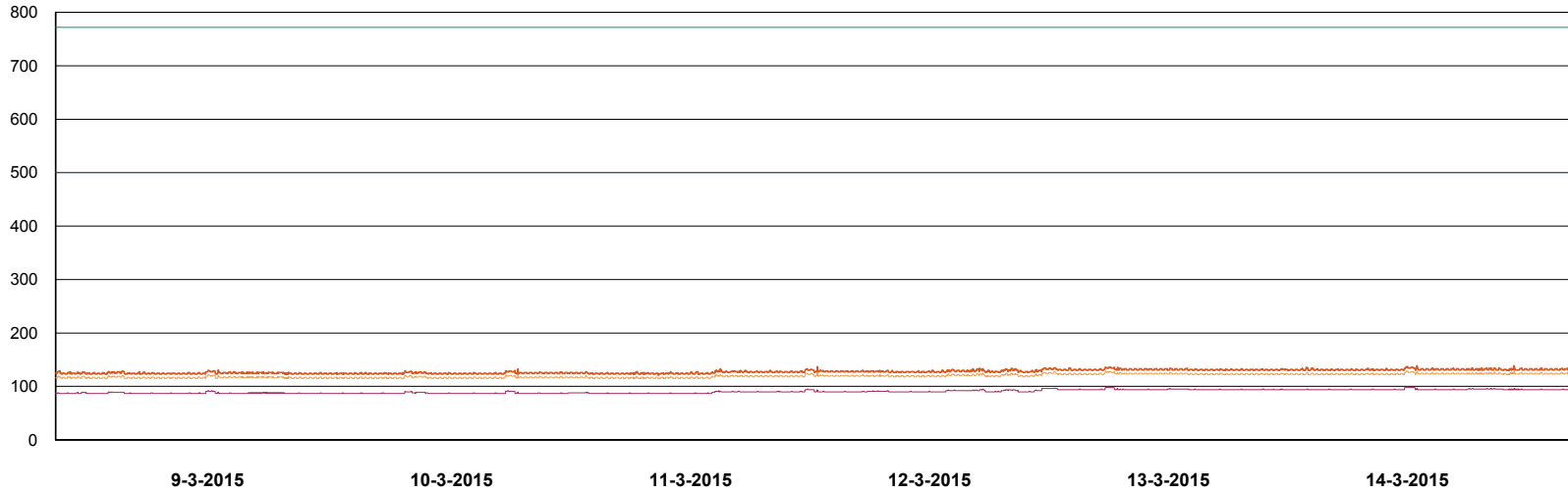
	Total disk space on C (GB)	Free disk space on C (GB)	Total disk space on D (GB)	Free disk space on D (GB)
14-3-2015	150	33	75	49
13-3-2015	150	33	75	49
12-3-2015	150	33	75	49
11-3-2015	150	33	75	49
10-3-2015	150	33	75	49
9-3-2015	150	33	75	49
8-3-2015	150	33	75	49

# Weekly SLA Customer Report

Customer PHS\_Production  
Database ID 47



DATABASE PERFORMANCE PHSDB\_Production

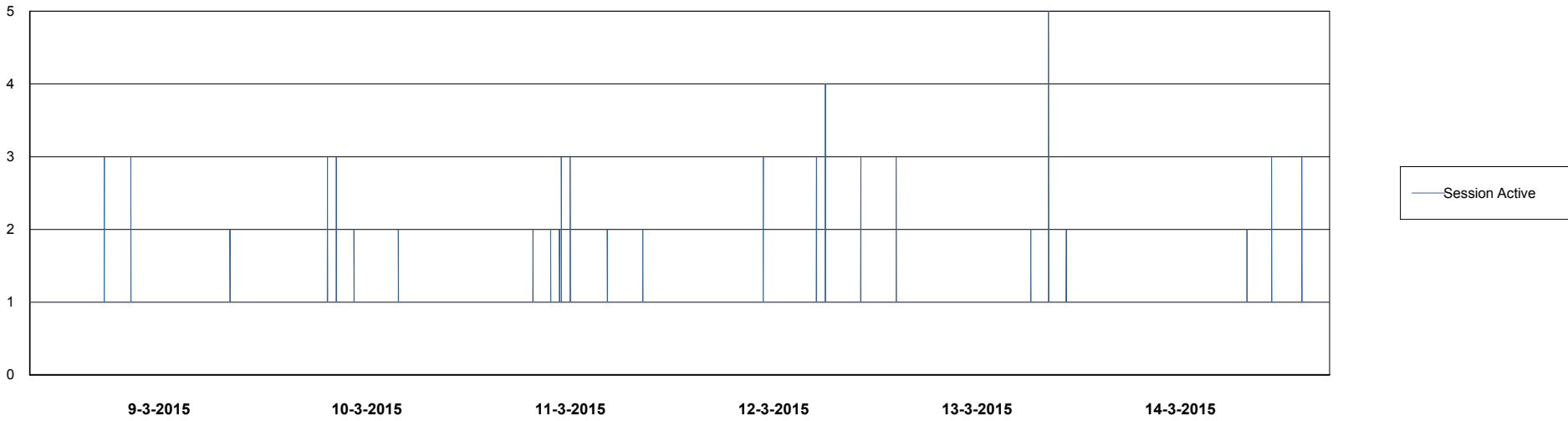
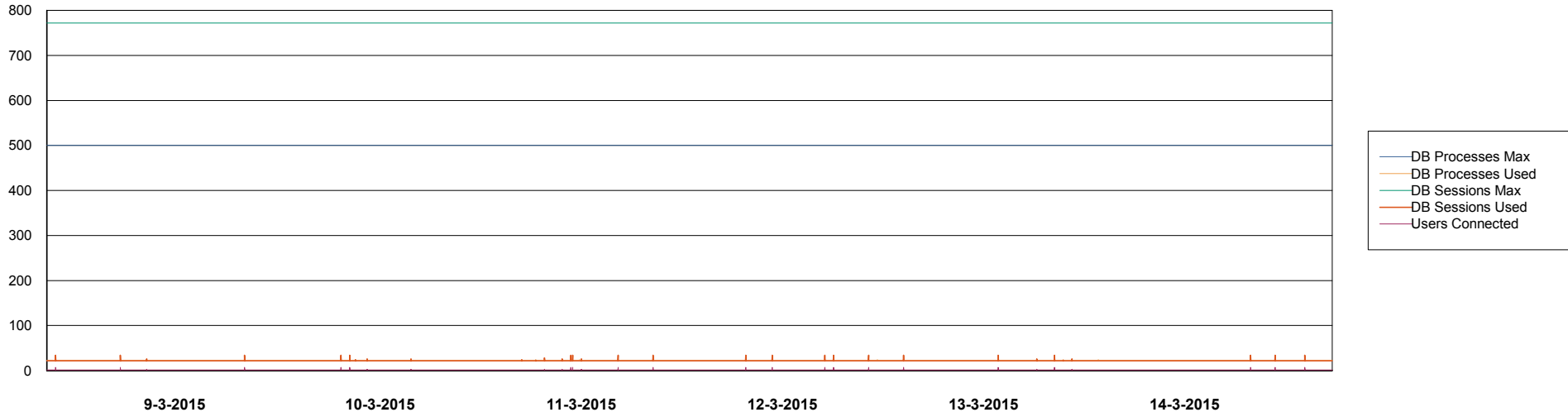


# Weekly SLA Customer Report

Customer PHS\_Production  
Database ID 47



DATABASE PERFORMANCE PHSDB\_Standby



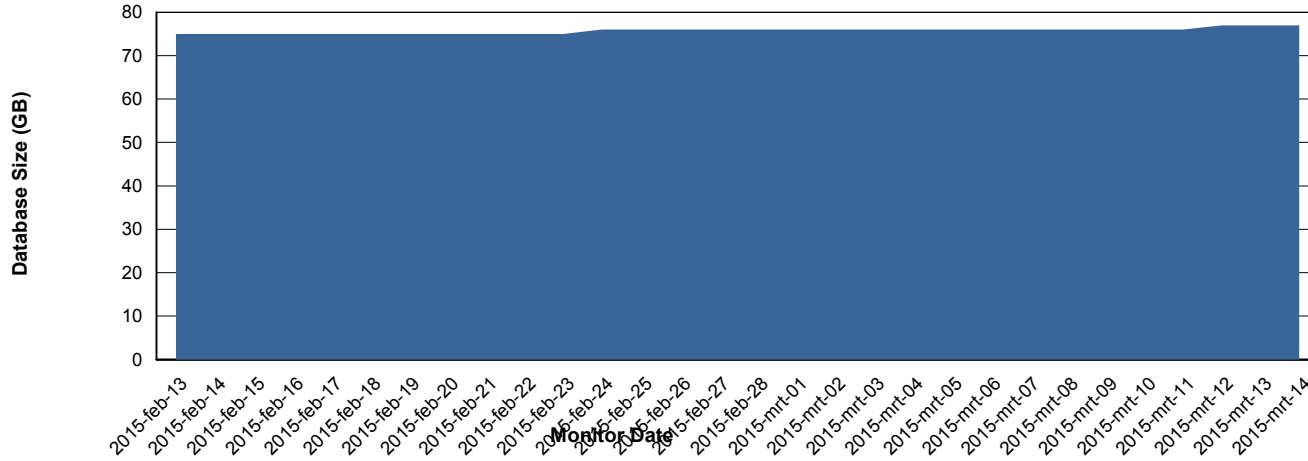
# Weekly SLA Customer Report

Customer PHS\_Production  
 Database ID 47



=====  
 DATABASE SIZE PHSDB\_Production  
 =====

## Database growth over last month



=====  
 DATABASE TABLESPACES PHSDB\_Production  
 =====

### TOTAL DATABASE SIZE PER TABLESPACE

Date	Tablespace Name	Filesize (Gb)	Usedsize (Gb)	Percentage free
14-3-2015	ABSDATA	93	75	19
	INDX	2	0	100
13-3-2015	ABSDATA	93	75	19
	INDX	2	0	100
12-3-2015	ABSDATA	93	75	19
	INDX	2	0	100
11-3-2015	ABSDATA	93	75	19
	INDX	2	0	100
10-3-2015	ABSDATA	93	75	19
	INDX	2	0	100
9-3-2015	ABSDATA	93	75	19
	INDX	2	0	100
8-3-2015	ABSDATA	93	75	19
	INDX	2	0	100

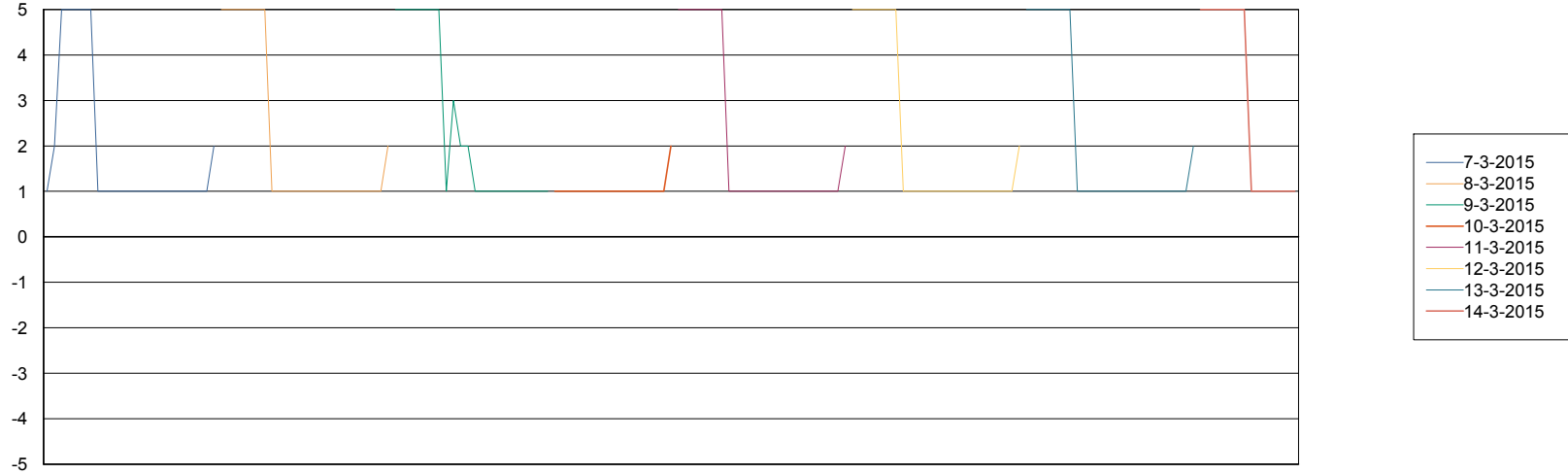
# Weekly SLA Customer Report

Customer PHS\_Production  
Database ID 47



=====  
STANDBY DATABASE HEALTH PHS\_Production  
=====

### Recovery lag for last 7 days



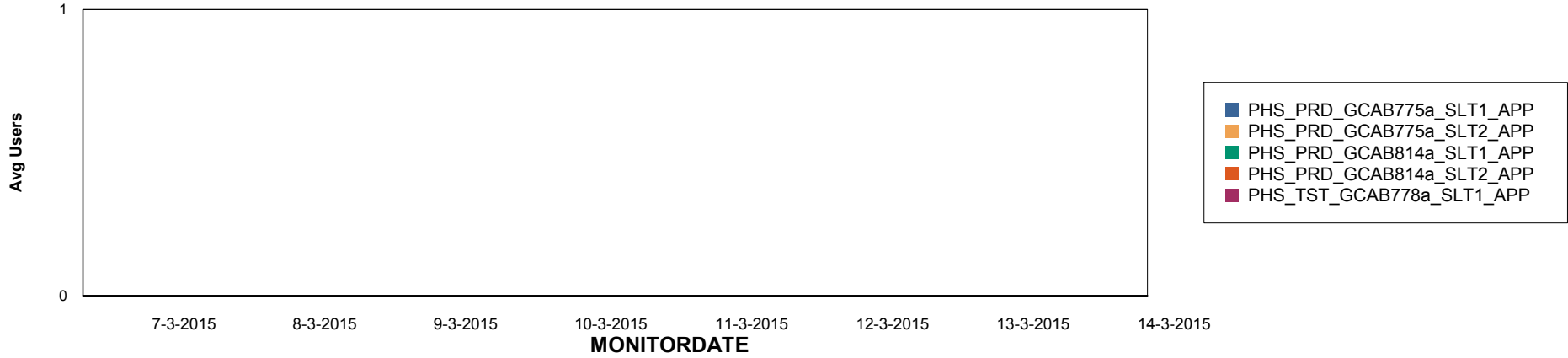
# Weekly SLA Customer Report

Customer PHS\_Production  
Database ID 47

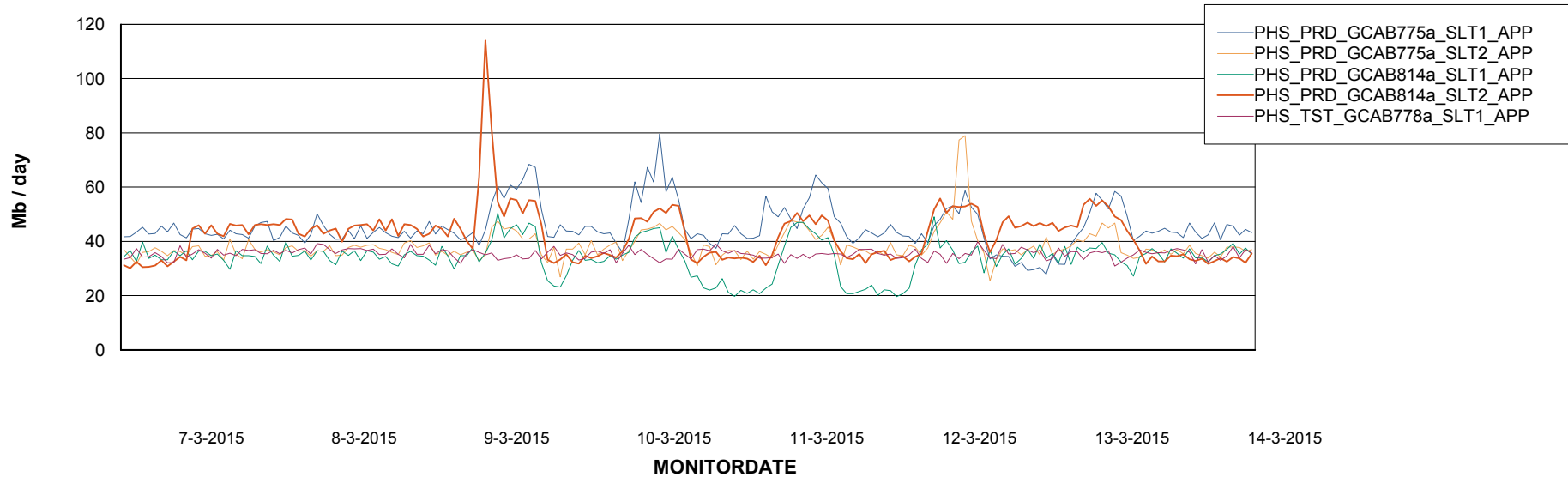


=====  
ABSolute Application Server Services  
=====

## Disaster per ABS Server



## Avg memory used per ABS Server Service



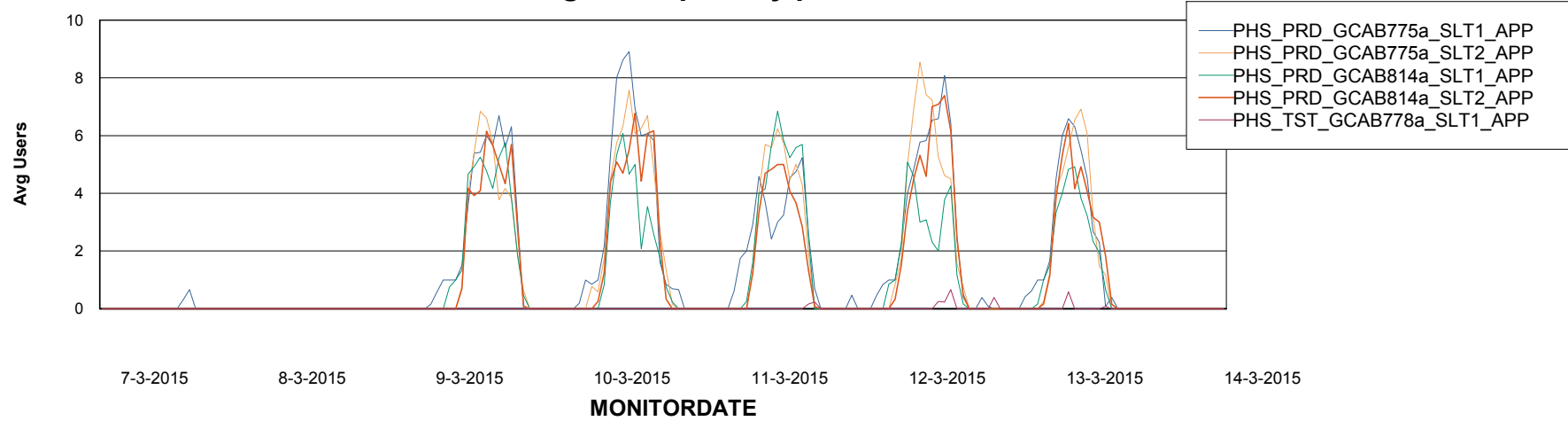
# Weekly SLA Customer Report

Customer PHS\_Production  
Database ID 47



=====  
ABSolute Application Server Services  
=====

### Avg users per day per ABS server



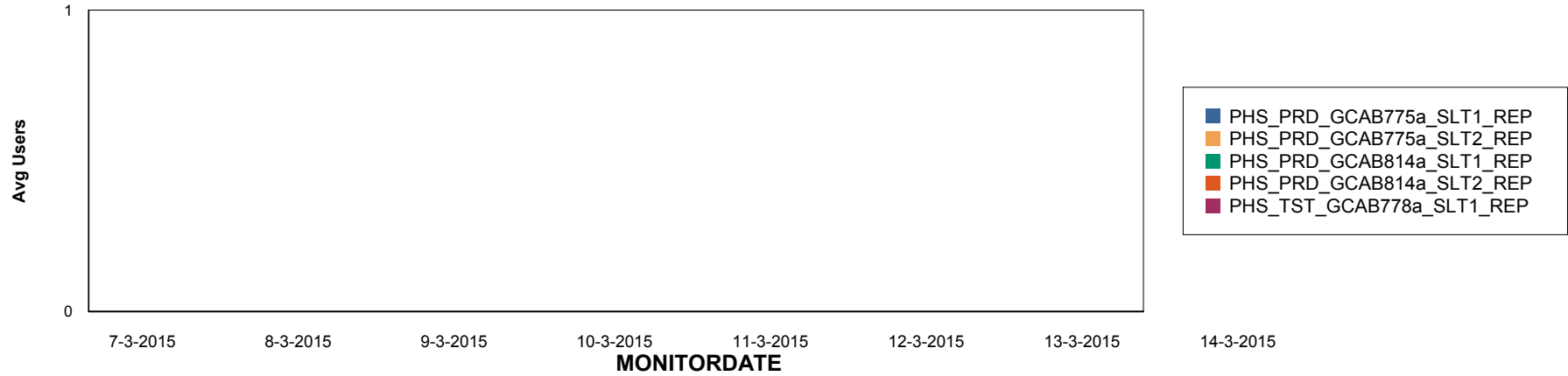
# Weekly SLA Customer Report

Customer PHS\_Production  
Database ID 47

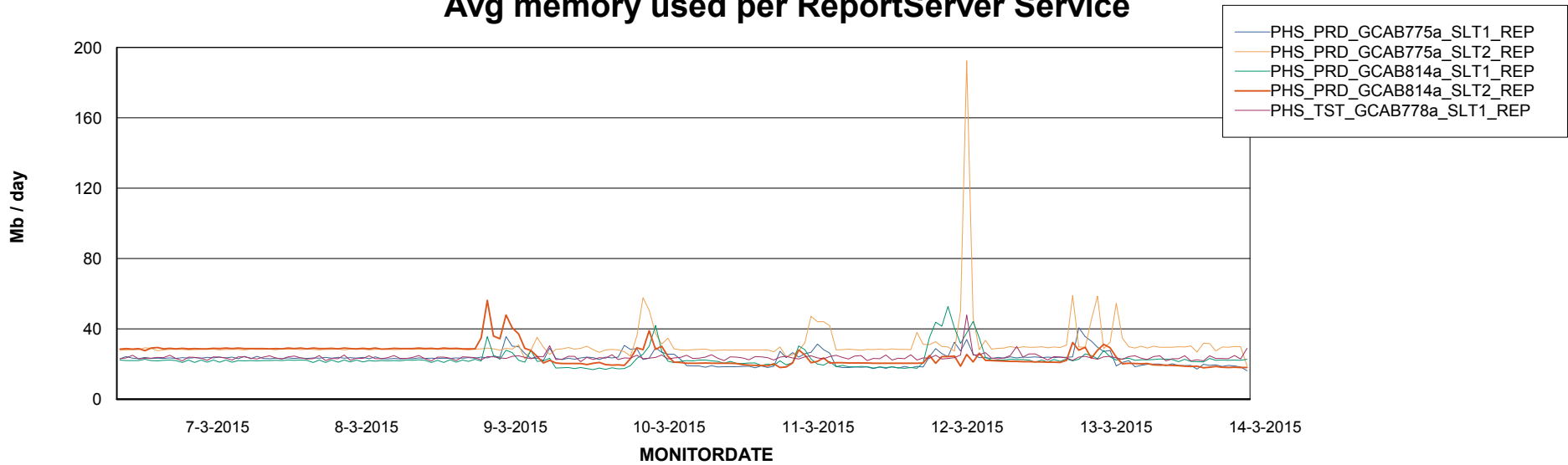


=====  
ABSolute Application ReportServer Services  
=====

## Disaster per ReportServer



## Avg memory used per ReportServer Service

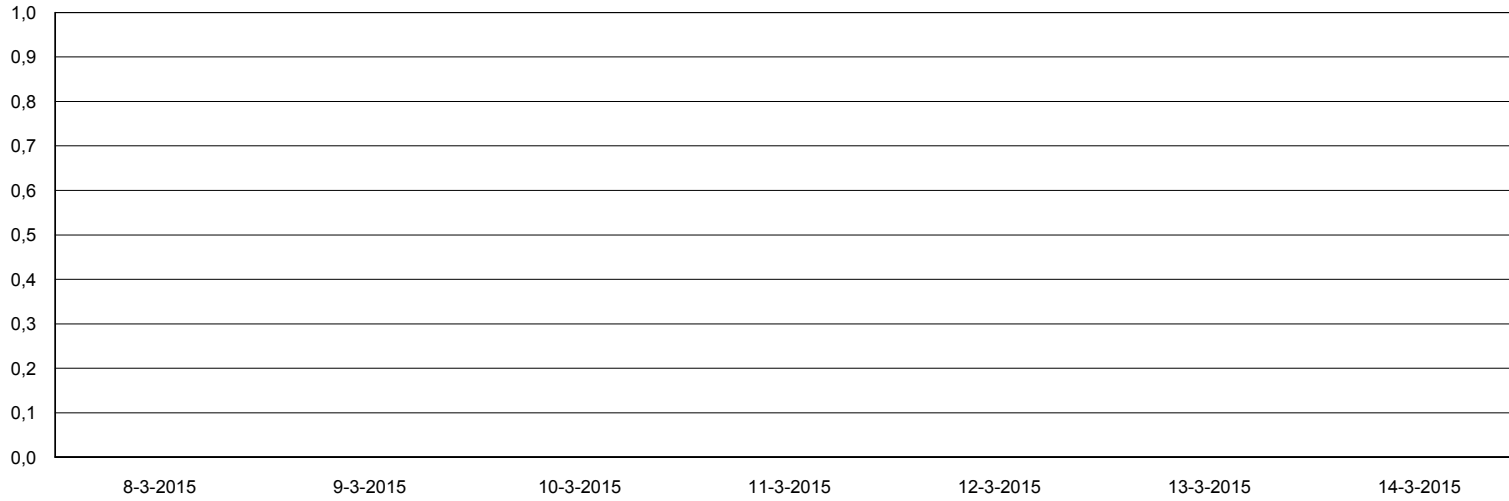


# Weekly SLA Customer Report

Customer PHS\_Production  
Database ID 47



## Disaster per ABS component



- PHS\_PRD\_GCAB775a\_SLT1\_APP
- PHS\_PRD\_GCAB775a\_SLT1\_REP
- PHS\_PRD\_GCAB775a\_SLT2\_APP
- PHS\_PRD\_GCAB775a\_SLT2\_REP
- PHS\_PRD\_GCAB814a\_SLT1\_APP
- PHS\_PRD\_GCAB814a\_SLT1\_REP
- PHS\_PRD\_GCAB814a\_SLT2\_APP
- PHS\_PRD\_GCAB814a\_SLT2\_REP
- PHS\_TST\_GCAB778a\_SLT1\_APP
- PHS\_TST\_GCAB778a\_SLT1\_REP