

Weekly SLA Customer Report

Customer NIX_Production
 Database ID 51



=====
 HARDDISK USAGE NIX_PRD_ABSAPP1
 =====

	Total disk space on C (GB)	Free disk space on C (GB)
14-3-2015	136	87
13-3-2015	136	88
12-3-2015	136	89
11-3-2015	136	89
10-3-2015	136	89
9-3-2015	136	89
8-3-2015	136	89

=====
 HARDDISK USAGE NIX_PRD_ABSWEB1
 =====

	Total disk space on C (GB)	Free disk space on C (GB)	Total disk space on D (GB)
14-3-2015	930	733	3
13-3-2015	930	733	3
12-3-2015	930	734	3
11-3-2015	930	734	3
10-3-2015	930	734	3
9-3-2015	930	734	3
8-3-2015	930	735	3

Weekly SLA Customer Report

Customer NIX_Production
 Database ID 51



=====
 HARDDISK USAGE NIX_PRD_ORACLE_B11
 =====

	Total disk space on C (GB)	Free disk space on C (GB)	Total disk space on D (GB)	Free disk space on D (GB)	Total disk space on E (GB)	Free disk space on E (GB)	Total disk space on F (GB)	Free disk space on F (GB)
14-3-2015	139	89	279	169	99	27	0	0
13-3-2015	111	64	279	169	99	27	3	0
12-3-2015	99	52	279	169	99	27	0	0
11-3-2015	99	52	279	169	99	28	0	0
10-3-2015	99	52	279	169	99	28	0	0
9-3-2015	99	52	279	169	99	28	0	0
8-3-2015	99	52	279	169	99	28	0	0

=====
 HARDDISK USAGE NIX_PRD_ORCDB1
 =====

	Total disk space on C (GB)	Free disk space on C (GB)	Total disk space on D (GB)	Free disk space on D (GB)	Total disk space on E (GB)	Free disk space on E (GB)
14-3-2015	136	67	136	27	136	47
13-3-2015	136	67	136	27	136	49
12-3-2015	136	67	136	27	136	49
11-3-2015	136	67	136	27	136	49
10-3-2015	136	67	136	27	136	49
9-3-2015	136	67	136	27	136	49
8-3-2015	136	67	136	27	136	49

Weekly SLA Customer Report

Customer NIX_Production
Database ID 51



HARDDISK USAGE NIX_PRD_ORCDB2

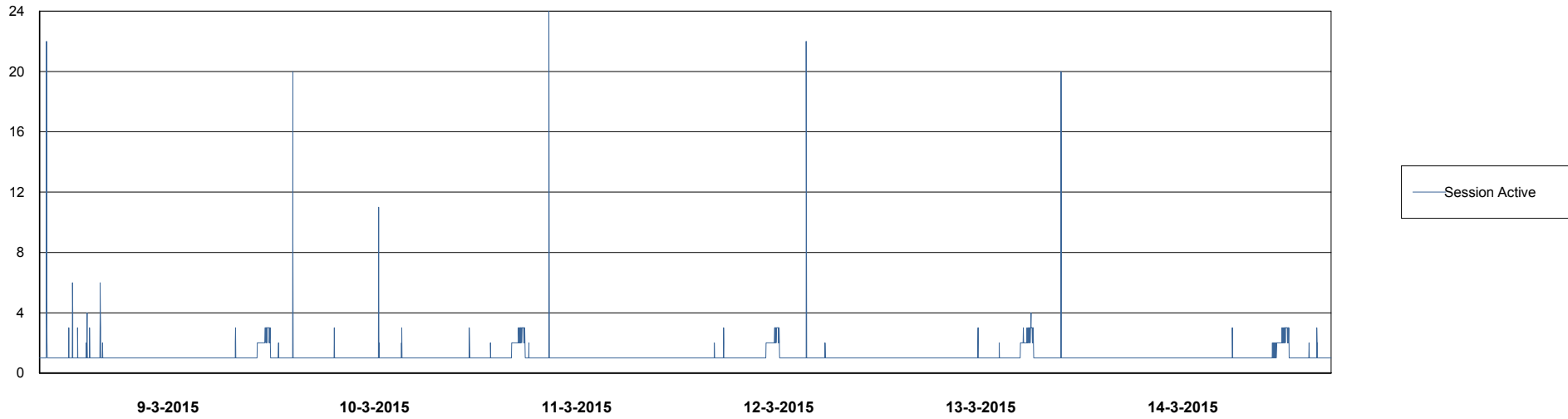
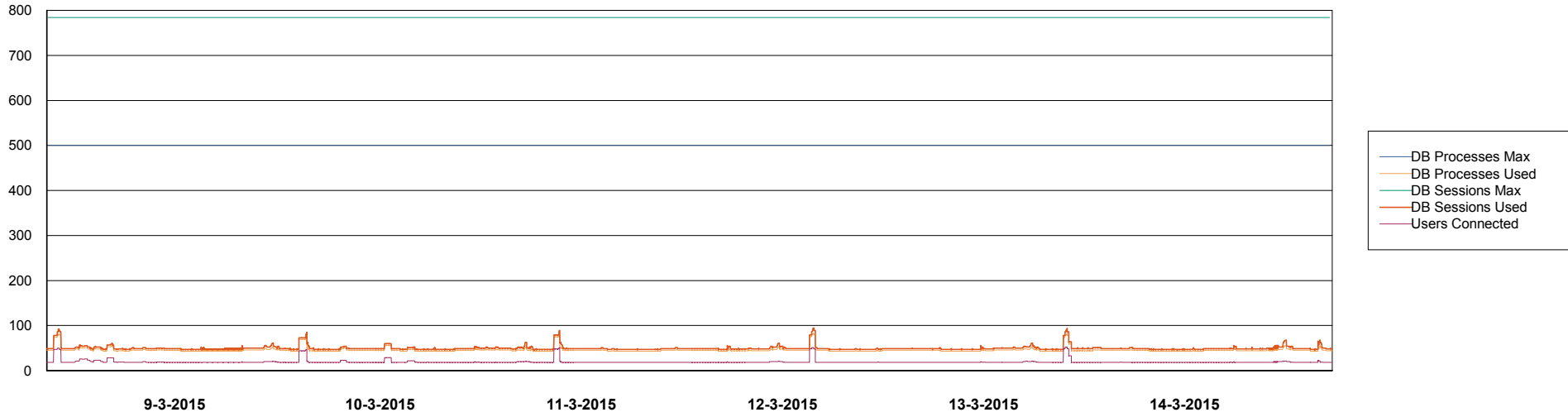
	Total disk space on C (GB)	Free disk space on C (GB)	Total disk space on D (GB)	Free disk space on D (GB)	Total disk space on E (GB)	Free disk space on E (GB)
14-3-2015	279	63	279	43	279	164
13-3-2015	279	63	279	43	279	135
12-3-2015	279	63	279	43	279	155
11-3-2015	279	63	279	43	279	121
10-3-2015	279	63	279	43	279	85
9-3-2015	279	63	279	43	279	119
8-3-2015	279	64	279	43	279	136

Weekly SLA Customer Report

Customer NIX_Production
Database ID 51



=====
DATABASE PERFORMANCE NIXDB_BI
=====

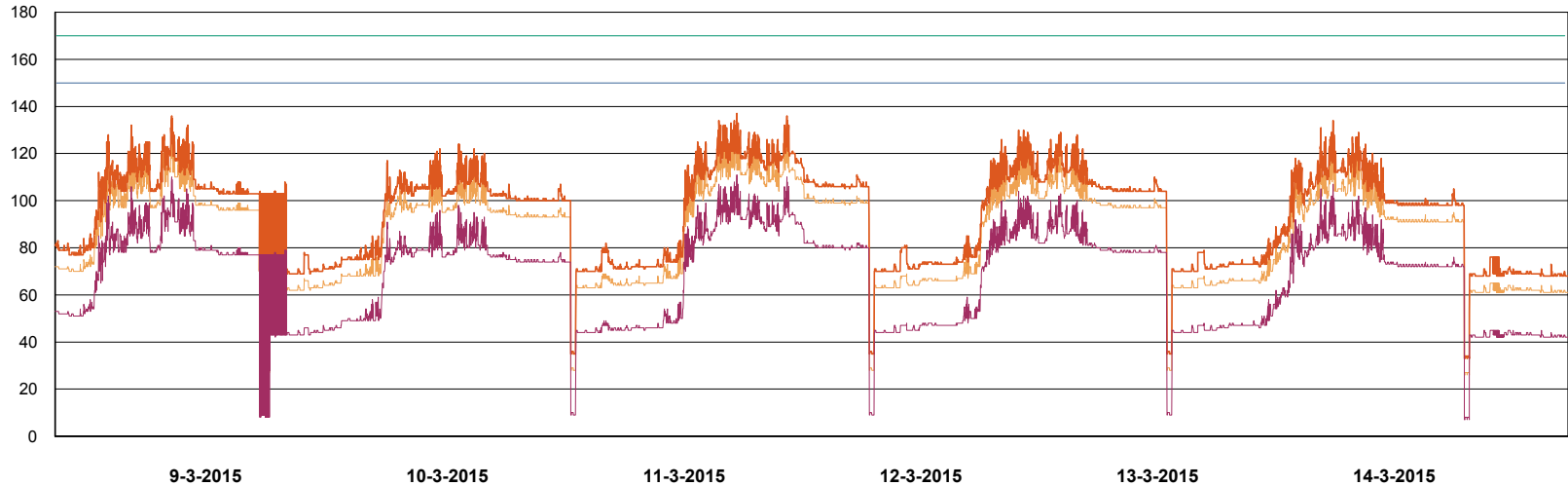


Weekly SLA Customer Report

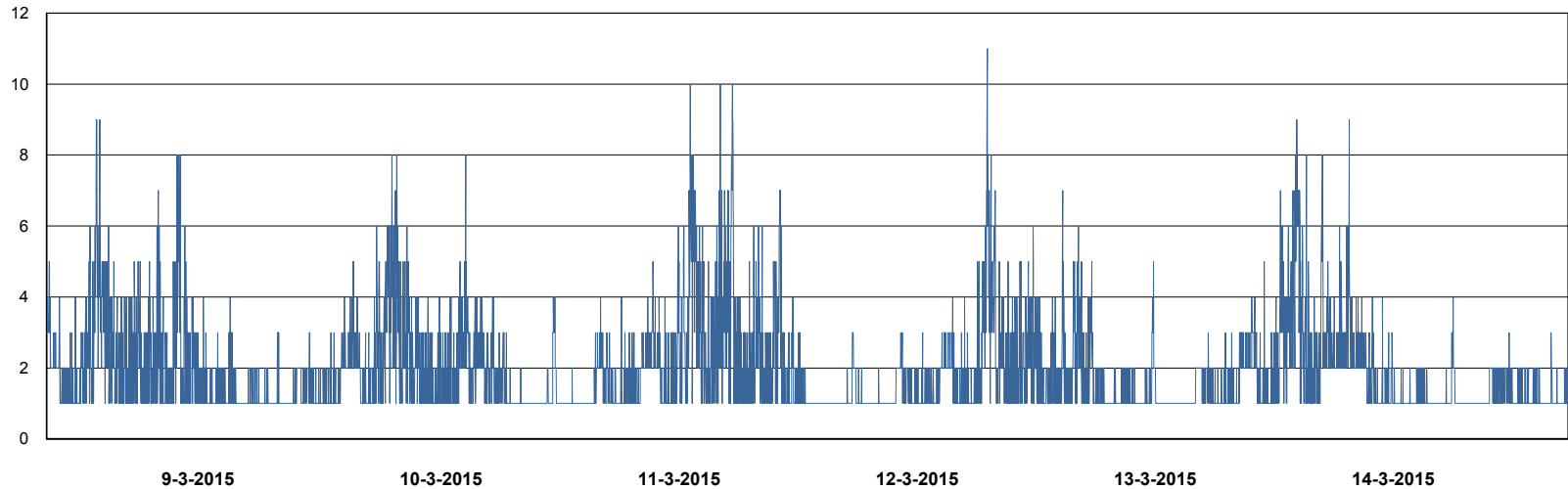
Customer NIX_Production
Database ID 51



DATABASE PERFORMANCE NIXDB_Production



- DB Processes Max
- DB Processes Used
- DB Sessions Max
- DB Sessions Used
- Users Connected



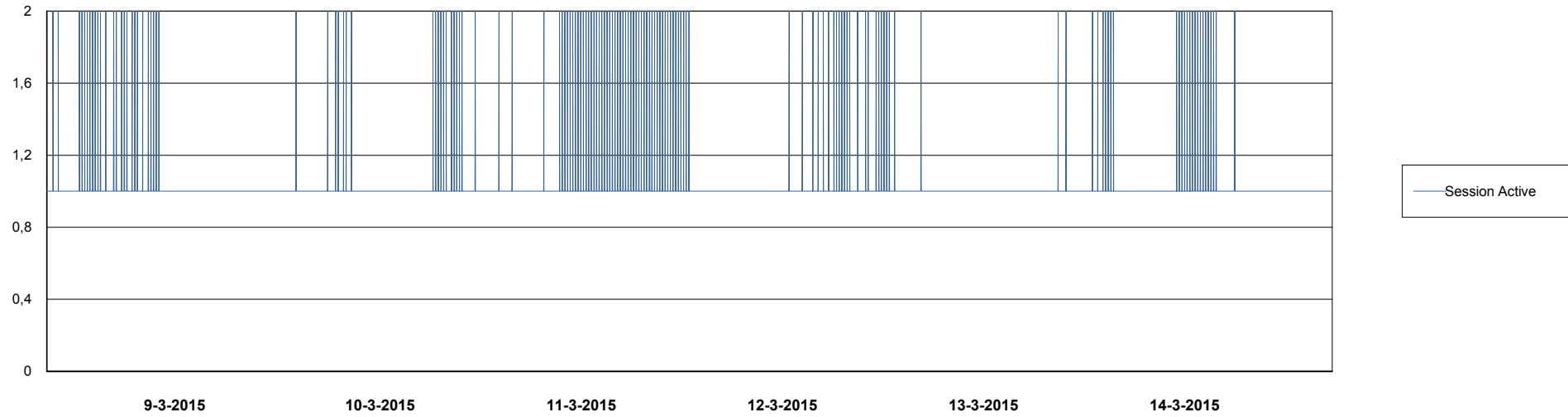
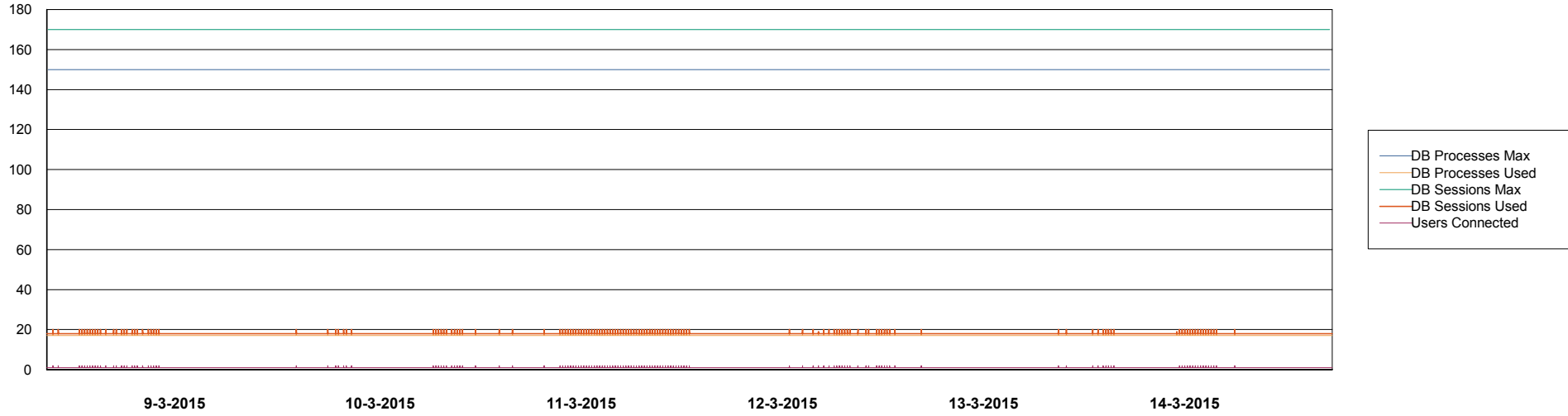
- Session Active

Weekly SLA Customer Report

Customer NIX_Production
Database ID 51



DATABASE PERFORMANCE NIXDB_Standby



Weekly SLA Customer Report

Customer NIX_Production
Database ID 51



=====
DATABASE TABLESPACES NIXDB_BI
=====
TOTAL DATABASE SIZE PER TABLESPACE

Date	Tablespace Name	Filesize (Gb)	Usedsize (Gb)	Percentage free
14-3-2015	ABSDATA	28	20	29
	INDX	44	31	30
13-3-2015	ABSDATA	28	20	29
	INDX	44	31	30
12-3-2015	ABSDATA	28	20	29
	INDX	44	31	30
11-3-2015	ABSDATA	28	20	29
	INDX	44	31	30
10-3-2015	ABSDATA	28	20	29
	INDX	44	31	30
9-3-2015	ABSDATA	28	20	29
	INDX	44	31	30
8-3-2015	ABSDATA	28	20	29
	INDX	44	31	30

Weekly SLA Customer Report

Customer NIX_Production
 Database ID 51



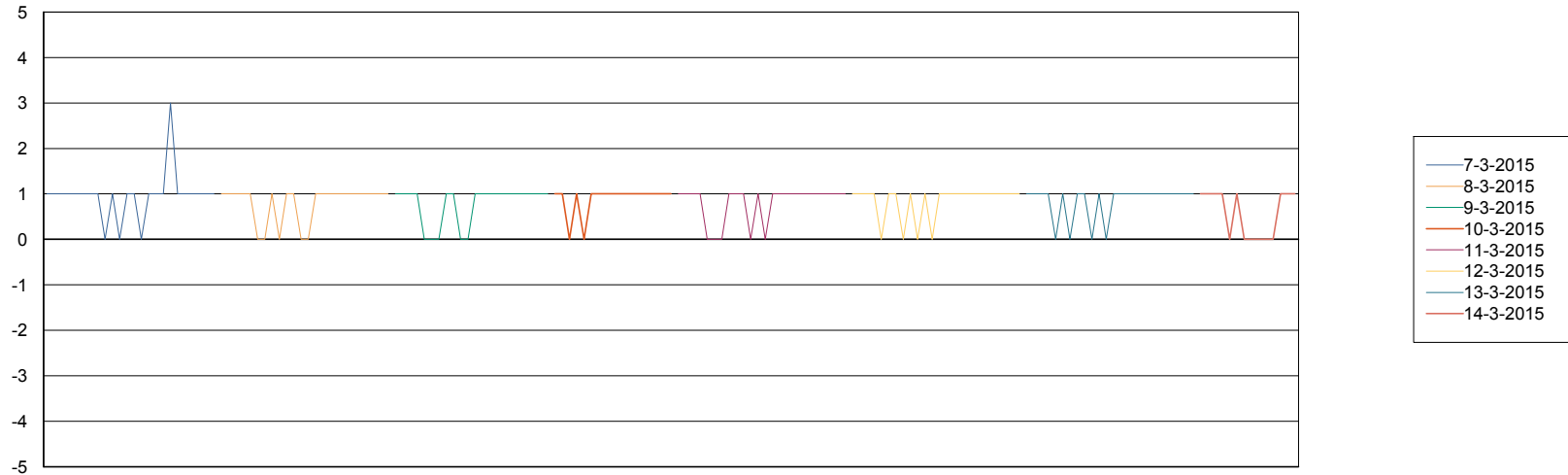
=====
 DATABASE TABLESPACES NIXDB_Production
 =====

TOTAL DATABASE SIZE PER TABLESPACE

Date	Tablespace Name	Filesize (Gb)	Usedsize (Gb)	Percentage free
14-3-2015	ABSDATA	40	31	23
	INDX	109	88	19
13-3-2015	ABSDATA	40	31	23
	INDX	109	88	19
12-3-2015	ABSDATA	40	31	23
	INDX	109	88	19
11-3-2015	ABSDATA	40	31	23
	INDX	109	88	19
10-3-2015	ABSDATA	40	31	23
	INDX	109	88	19
9-3-2015	ABSDATA	40	31	23
	INDX	109	88	19
8-3-2015	ABSDATA	40	31	23
	INDX	109	88	19

=====
 STANDBY DATABASE HEALTH NIX_Production
 =====

Recovery lag for last 7 days



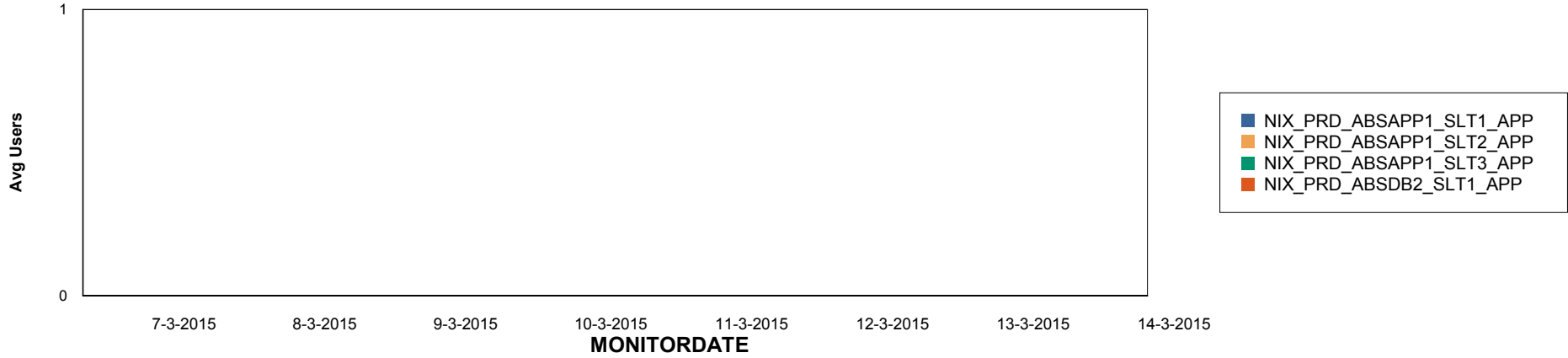
Weekly SLA Customer Report

Customer NIX_Production
Database ID 51

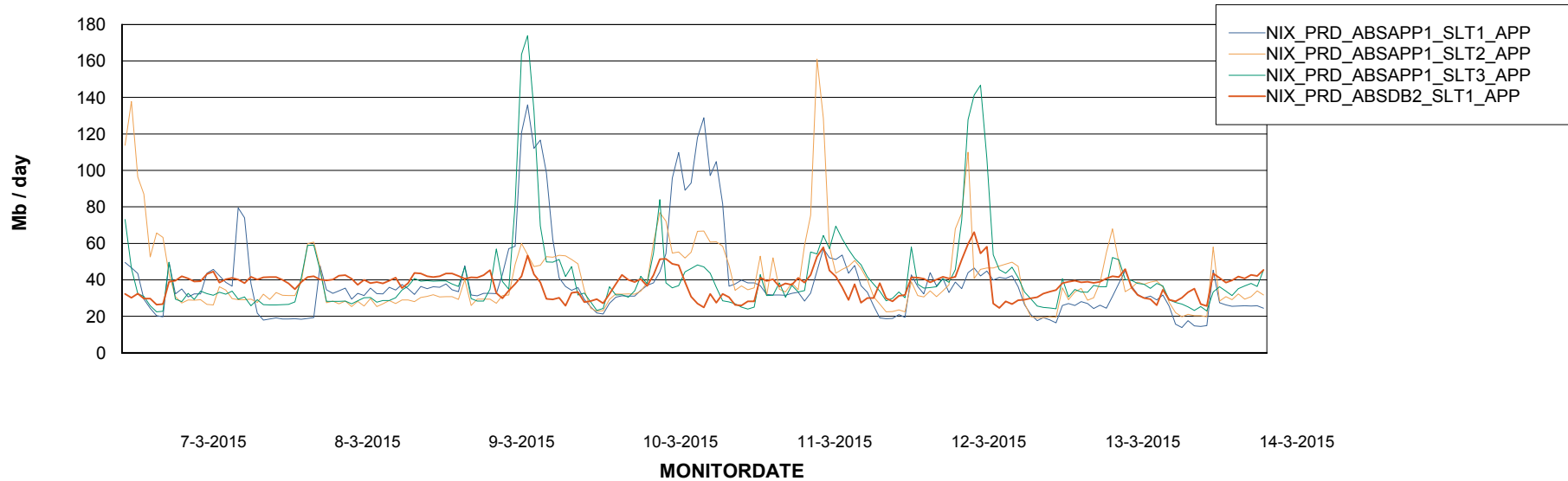


ABSolute Application Server Services

Disaster per ABS Server



Avg memory used per ABS Server Service



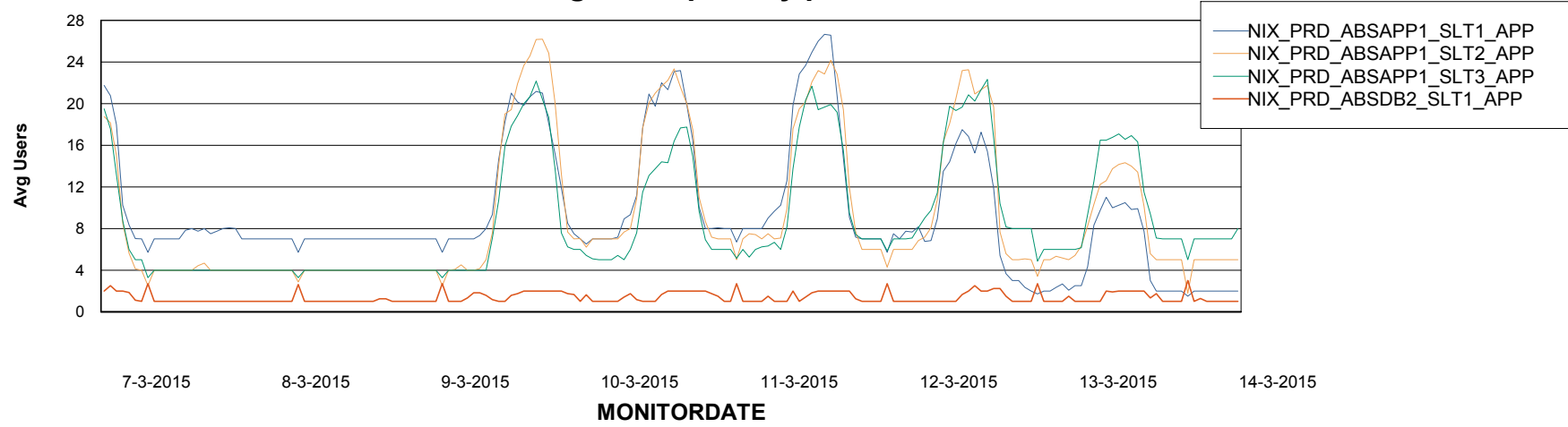
Weekly SLA Customer Report

Customer NIX_Production
Database ID 51



=====
ABSolute Application Server Services
=====

Avg users per day per ABS server



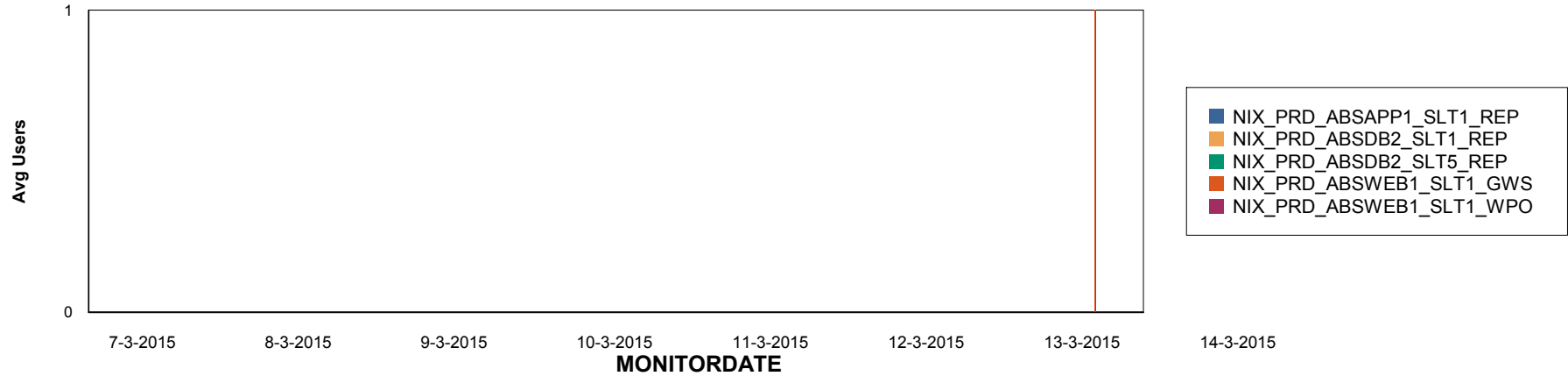
Weekly SLA Customer Report

Customer NIX_Production
Database ID 51

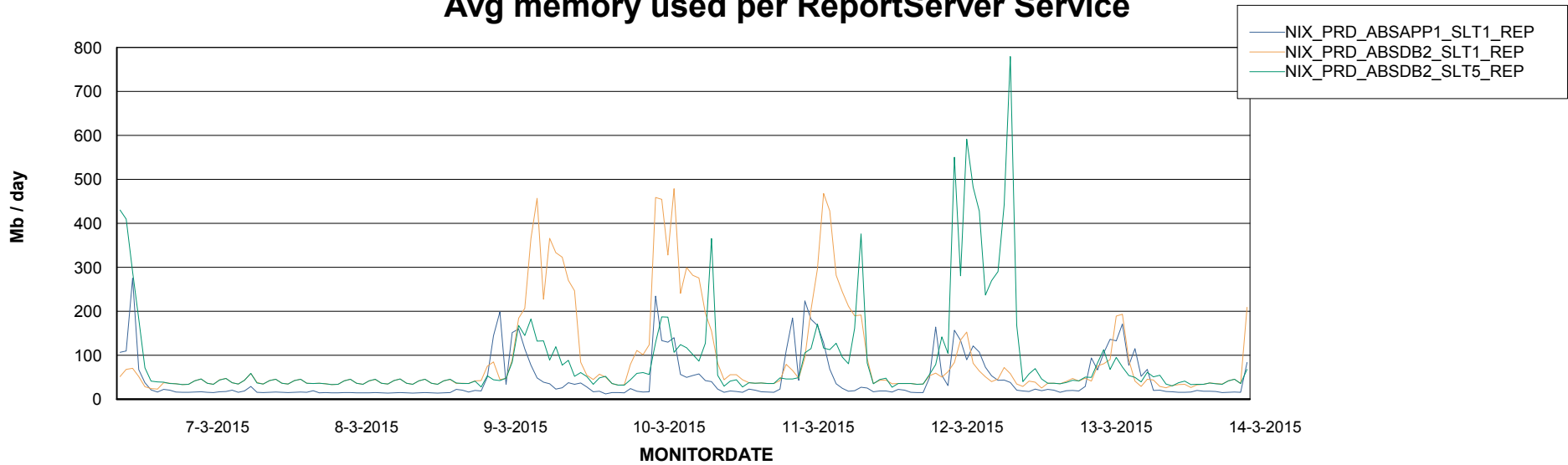


=====
ABSolute Application ReportServer Services
=====

Disaster per ReportServer



Avg memory used per ReportServer Service



Weekly SLA Customer Report

Customer NIX_Production
Database ID 51



Disaster per ABS component

