

Weekly SLA Customer Report

Customer LLG_Production
 Database ID 53



=====
 HARDDISK USAGE LLG_PRD_BI01
 =====

	Total disk space on C (GB)	Free disk space on C (GB)
14-3-2015	559	359
13-3-2015	559	359
12-3-2015	559	359
11-3-2015	559	360
10-3-2015	559	360
9-3-2015	559	360
8-3-2015	559	360

=====
 HARDDISK USAGE LLG_PRD_OR01
 =====

	Total disk space on C (GB)	Free disk space on C (GB)	Total disk space on D (GB)	Free disk space on D (GB)
14-3-2015	279	177	600	266
13-3-2015	279	177	600	267
12-3-2015	279	177	600	269
11-3-2015	279	177	600	270
10-3-2015	279	177	600	271
9-3-2015	279	177	600	162
8-3-2015	279	177	600	96

Weekly SLA Customer Report

Customer LLG_Production
 Database ID 53



=====

HARDDISK USAGE LLG_PRD_OR2

=====

	Total disk space on C (GB)	Free disk space on C (GB)	Total disk space on D (GB)	Free disk space on D (GB)
14-3-2015	293	248	545	339
13-3-2015	293	248	545	340
12-3-2015	293	248	545	342
11-3-2015	293	248	545	343
10-3-2015	293	248	545	344
9-3-2015	293	248	545	233
8-3-2015	293	248	545	168

=====

HARDDISK USAGE LLG_PRD_vABS01

=====

	Total disk space on C (GB)	Free disk space on C (GB)	Total disk space on D (GB)	Free disk space on D (GB)
14-3-2015	150	32	150	143
13-3-2015	150	32	150	143
12-3-2015	150	32	150	143
11-3-2015	150	32	150	143
10-3-2015	150	33	150	144
9-3-2015	150	33	150	144
8-3-2015	150	33	150	144

Weekly SLA Customer Report

Customer LLG_Production
Database ID 53



HARDDISK USAGE LLG_PRD_vABS02

	Total disk space on C (GB)	Free disk space on C (GB)	Total disk space on D (GB)	Free disk space on D (GB)
14-3-2015	150	50	150	125
13-3-2015	150	51	150	125
12-3-2015	150	51	150	125
11-3-2015	150	51	150	125
10-3-2015	150	51	150	125
9-3-2015	150	51	150	125
8-3-2015	150	55	150	125

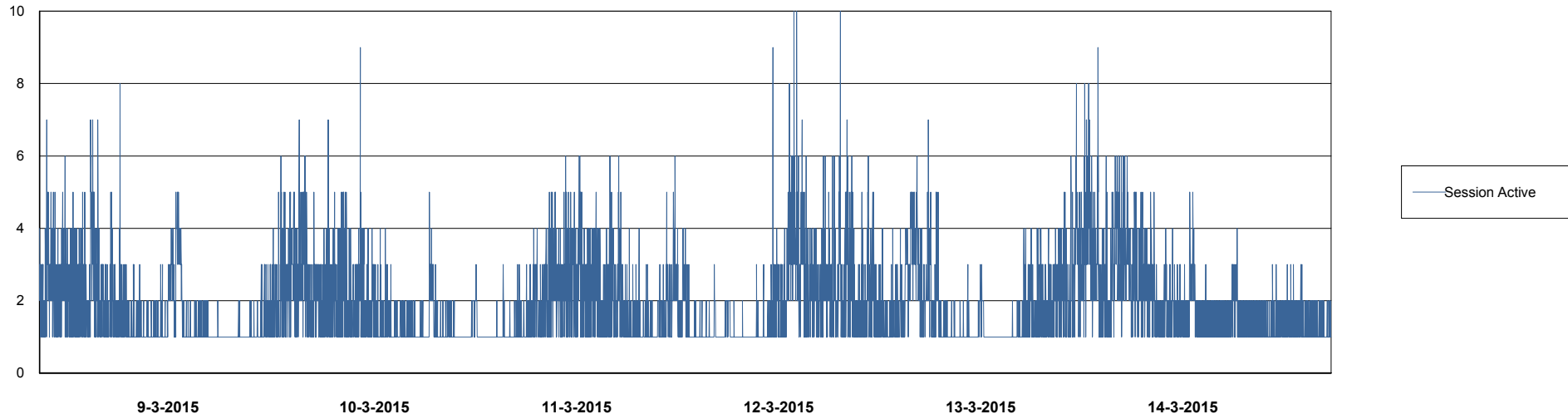
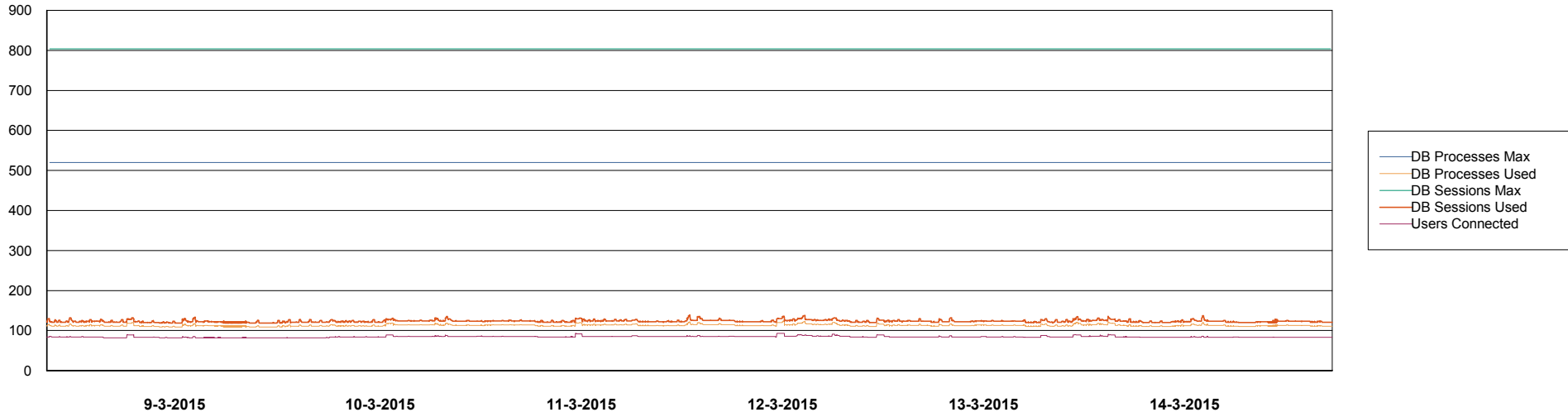
Weekly SLA Customer Report

Customer LLG_Production
Database ID 53



DATABASE PERFORMANCE

LLGDB_Production

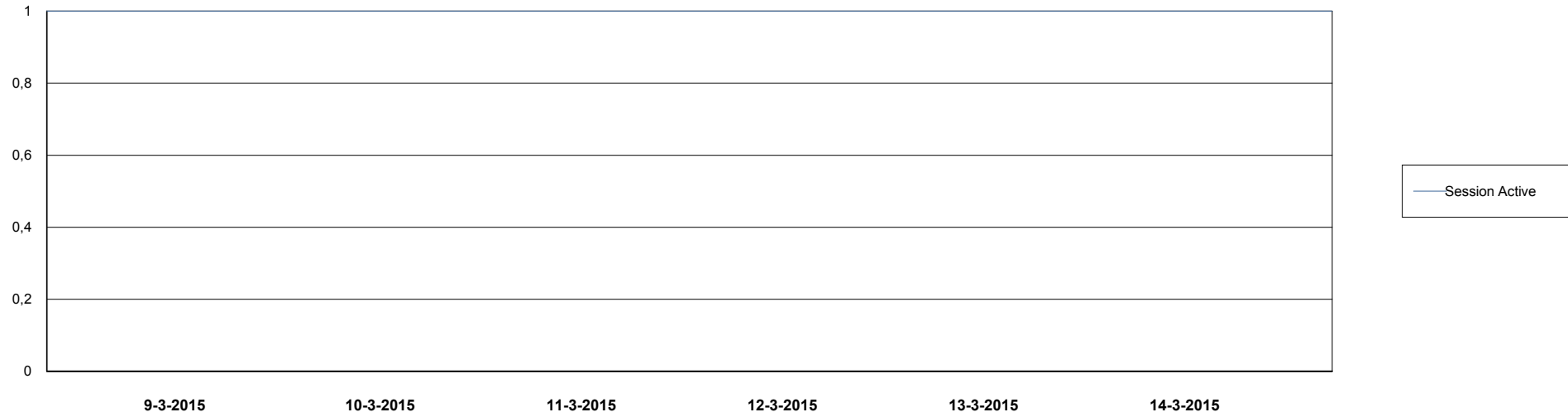
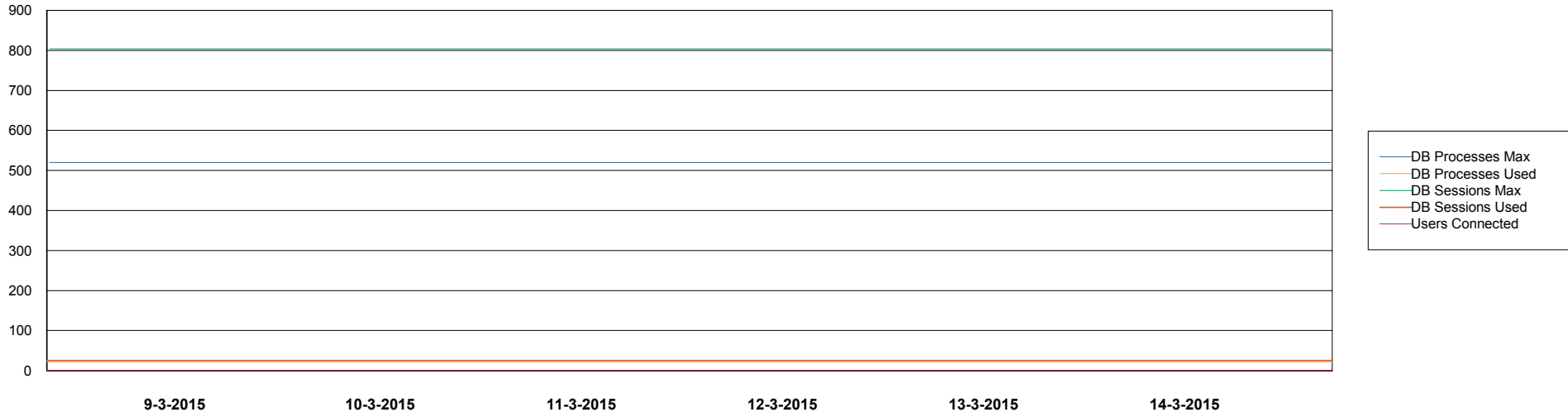


Weekly SLA Customer Report

Customer LLG_Production
Database ID 53



DATABASE PERFORMANCE LLGDB_Standby



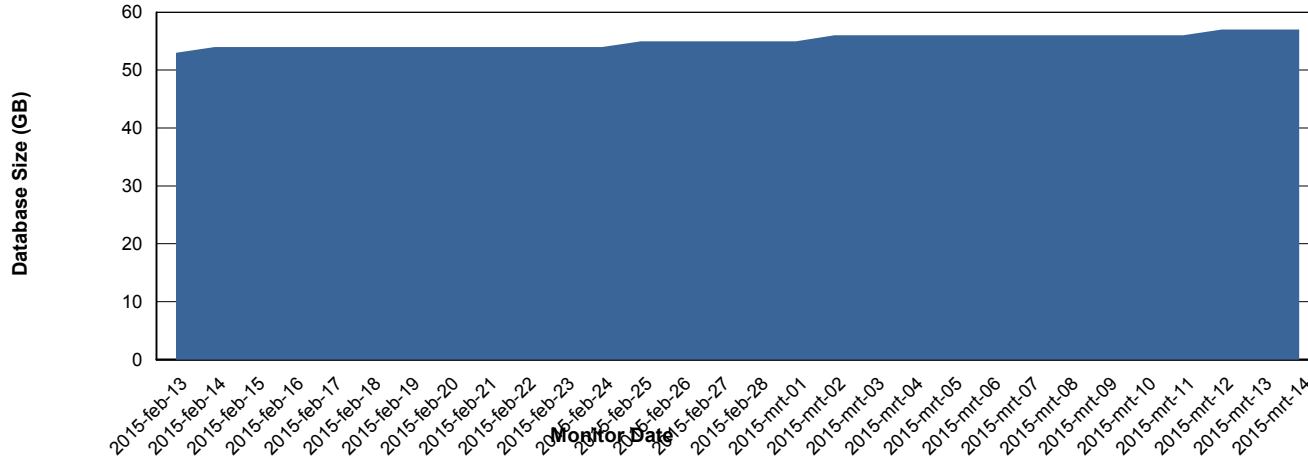
Weekly SLA Customer Report

Customer LLG_Production
 Database ID 53



=====
 DATABASE SIZE LLGDB_Production
 =====

Database growth over last month



=====
 DATABASE TABLESPACES LLGDB_Production
 =====

TOTAL DATABASE SIZE PER TABLESPACE

Date	Tablespace Name	Filesize (Gb)	Usedsize (Gb)	Percentage free
14-3-2015	ABSDATA	28	20	29
	INDX	44	34	23
13-3-2015	ABSDATA	28	20	29
	INDX	44	34	23
12-3-2015	ABSDATA	28	20	29
	INDX	44	34	23
11-3-2015	ABSDATA	28	20	29
	INDX	44	34	23
10-3-2015	ABSDATA	28	20	29
	INDX	44	34	23
9-3-2015	ABSDATA	28	20	29
	INDX	44	34	23
8-3-2015	ABSDATA	28	20	29
	INDX	44	34	23

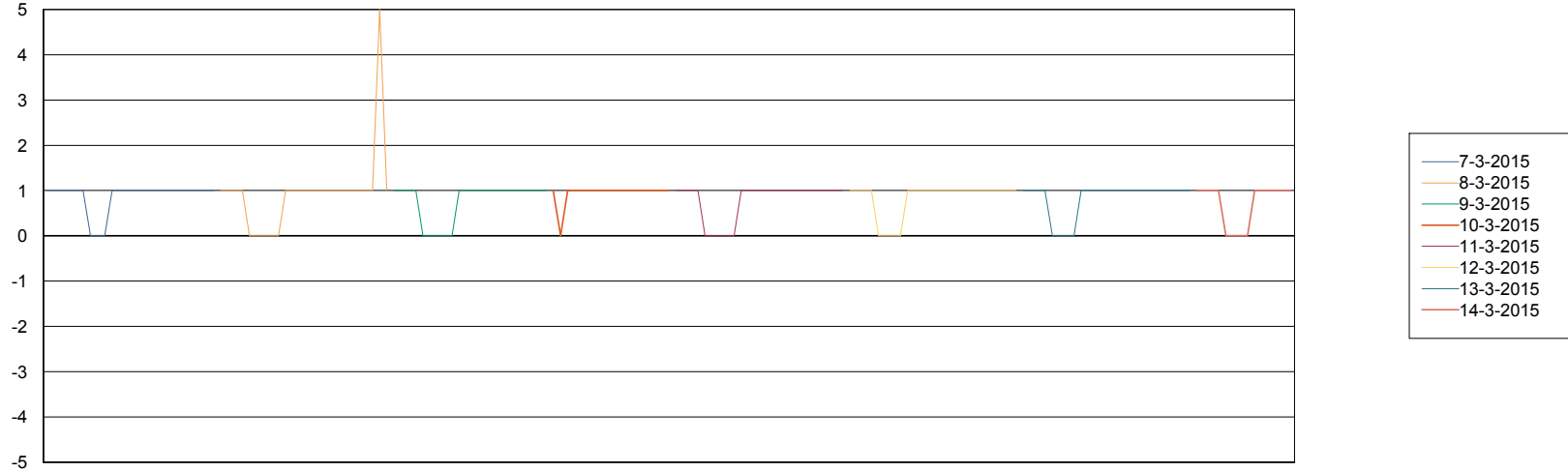
Weekly SLA Customer Report

Customer LLG_Production
Database ID 53



=====
STANDBY DATABASE HEALTH LLG_Production
=====

Recovery lag for last 7 days



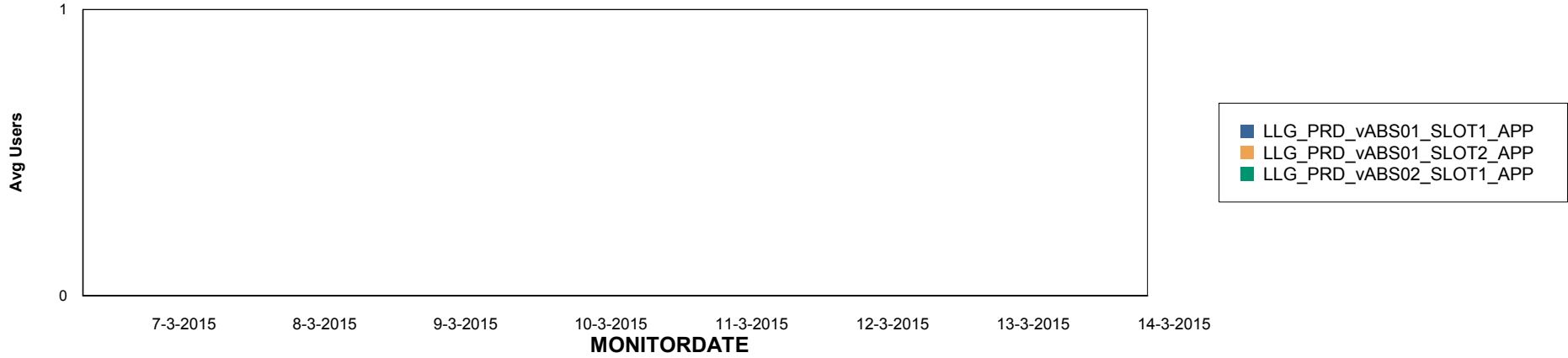
Weekly SLA Customer Report

Customer LLG_Production
Database ID 53

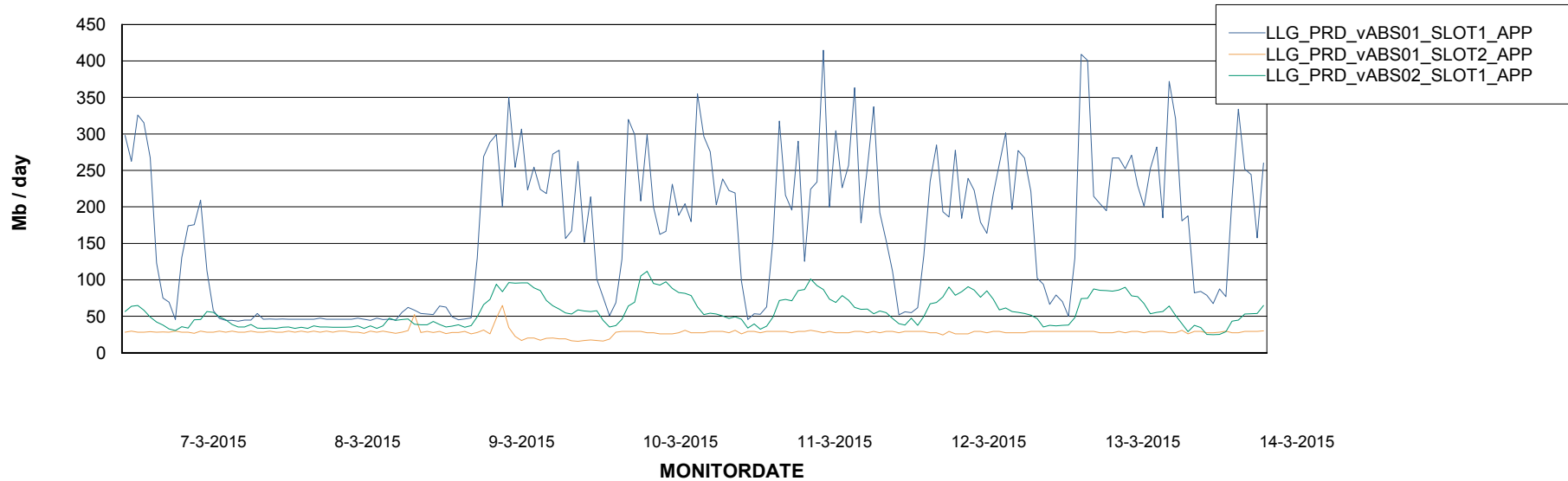


=====
ABSolute Application Server Services
=====

Disaster per ABS Server



Avg memory used per ABS Server Service



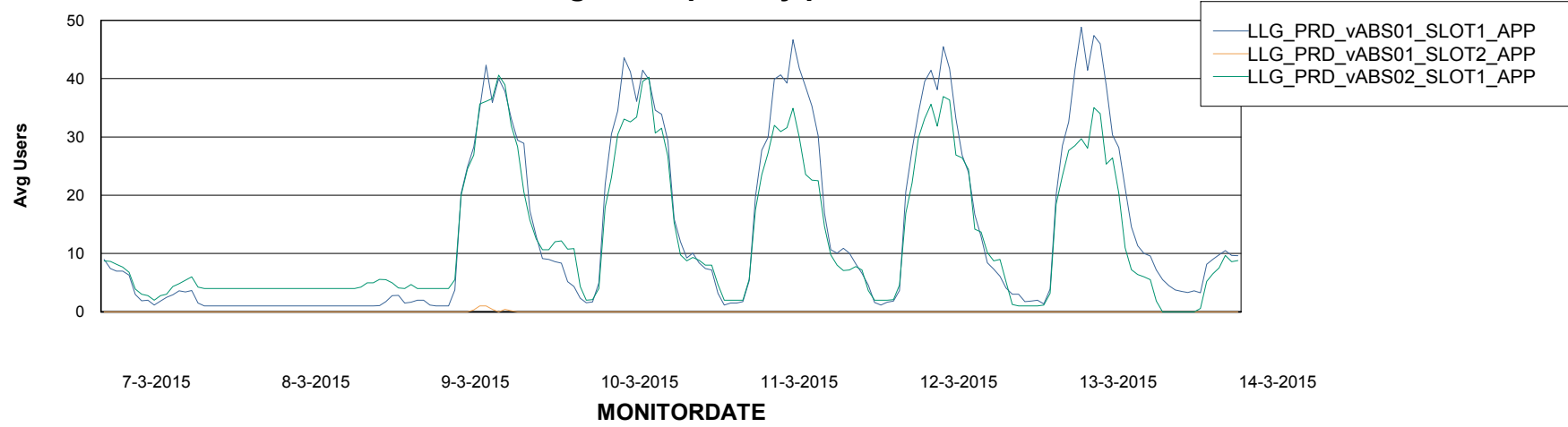
Weekly SLA Customer Report

Customer LLG_Production
Database ID 53



=====
ABSolute Application Server Services
=====

Avg users per day per ABS server



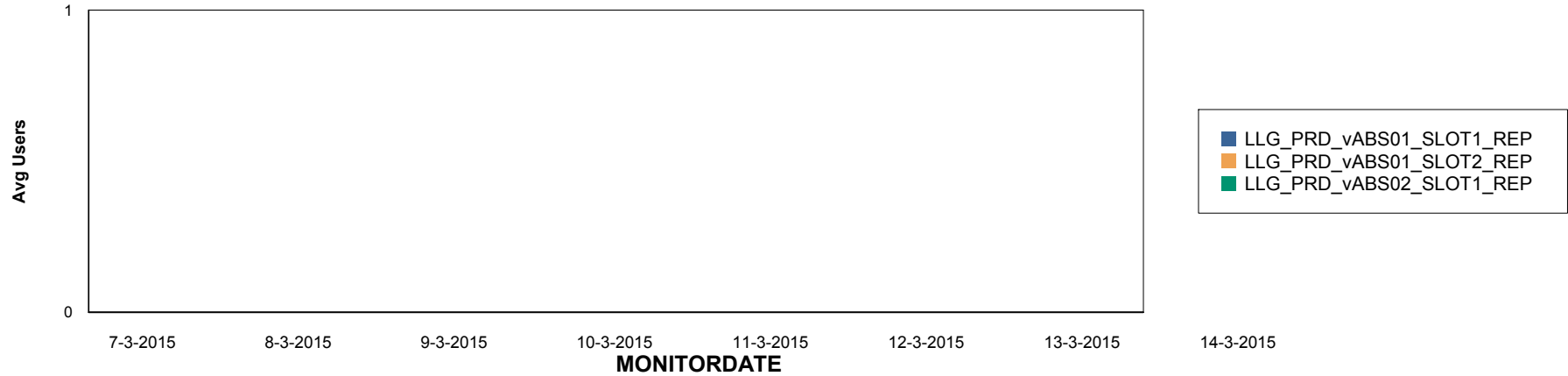
Weekly SLA Customer Report

Customer LLG_Production
Database ID 53

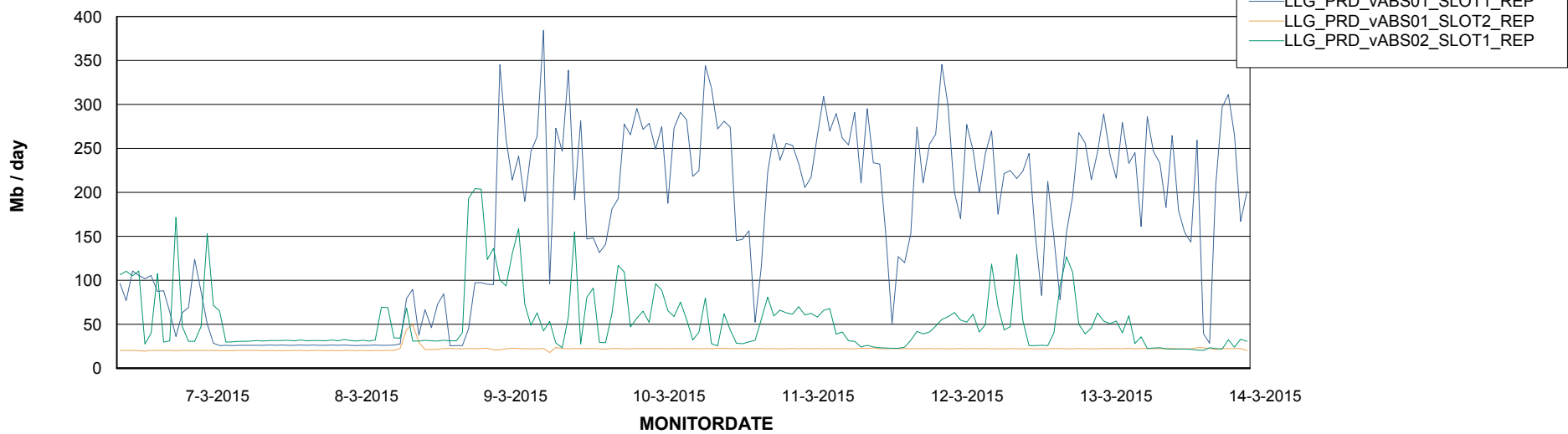


=====
ABSolute Application ReportServer Services
=====

Disaster per ReportServer



Avg memory used per ReportServer Service



Weekly SLA Customer Report

Customer LLG_Production
Database ID 53



Disaster per ABS component

