

Weekly SLA Customer Report

Customer JWR Production
Database ID 43



=====
HARDDISK USAGE JWR_PRD_JWR-ABS-01
=====

	Used disk space on / (GB)	Total disk space on / (GB)	Free disk space on / (GB)
14-3-2015	27	49	19
13-3-2015	27	49	19
12-3-2015	27	49	19
11-3-2015	27	49	19
10-3-2015	27	49	19
9-3-2015	27	49	19
8-3-2015	27	49	19

=====
HARDDISK USAGE JWR_PRD_JWR-ABS-02
=====

	Used disk space on / (GB)	Total disk space on / (GB)	Free disk space on / (GB)
14-3-2015	28	49	18
13-3-2015	28	49	18
12-3-2015	28	49	18
11-3-2015	28	49	18
10-3-2015	28	49	18
9-3-2015	28	49	18
8-3-2015	28	49	18

Weekly SLA Customer Report

Customer JWR Production
 Database ID 43



=====

HARDDISK USAGE JWR_PRD_JWR-ODB-01

=====

	Used disk space on / (GB)	Total disk space on / (GB)	Free disk space on / (GB)
14-3-2015	83	148	58
13-3-2015	84	148	57
12-3-2015	84	148	57
11-3-2015	83	148	57
10-3-2015	83	148	58
9-3-2015	83	148	57
8-3-2015	83	148	57

=====

HARDDISK USAGE JWR_PRD_JWR-ODB-02

=====

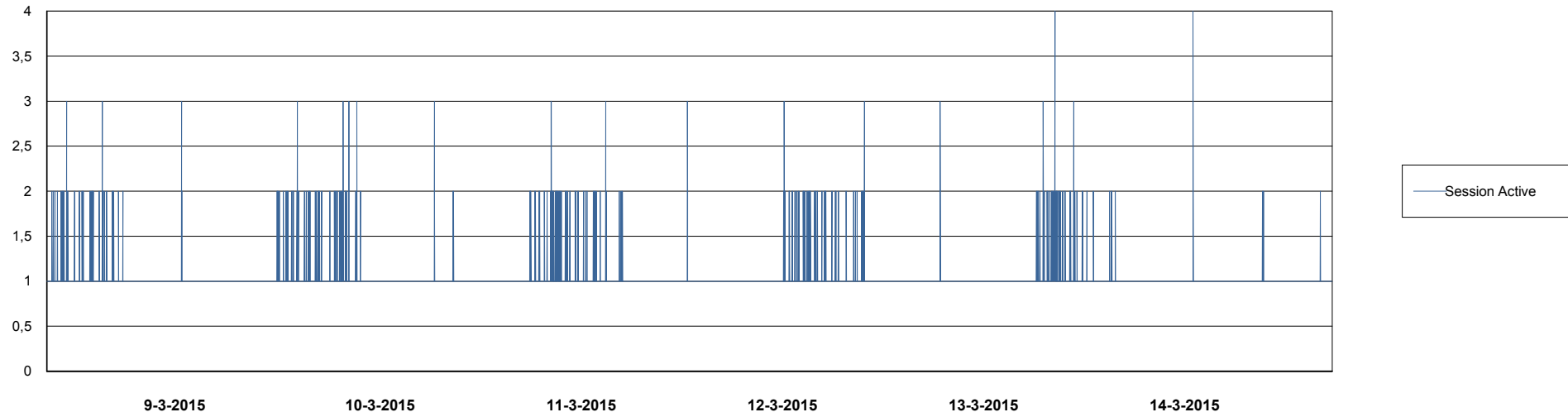
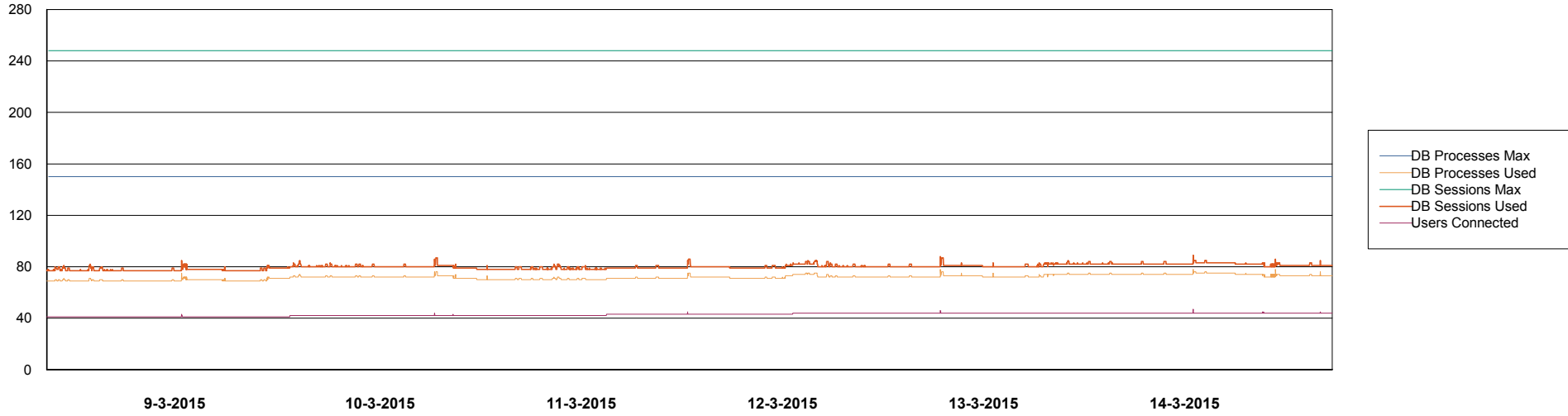
	Used disk space on / (GB)	Total disk space on / (GB)	Free disk space on / (GB)
14-3-2015	93	138	38
13-3-2015	93	138	38
12-3-2015	93	138	38
11-3-2015	93	138	38
10-3-2015	93	138	38
9-3-2015	93	138	38
8-3-2015	93	138	38

Weekly SLA Customer Report

Customer JWR Production
Database ID 43



DATABASE PERFORMANCE JWRDB_Production



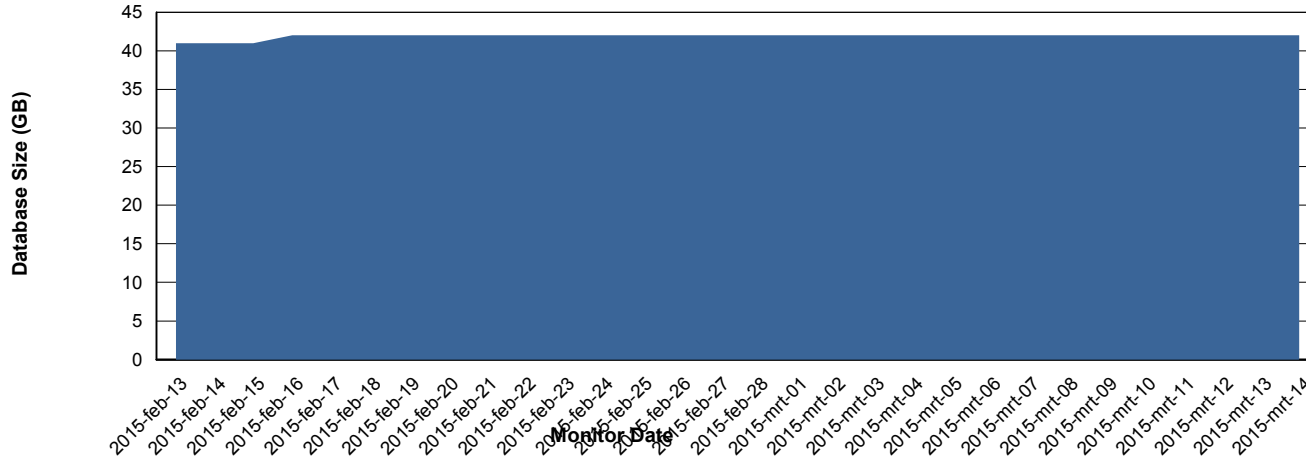
Weekly SLA Customer Report

Customer JWR Production
 Database ID 43



=====
 DATABASE SIZE JWRDB_Production
 =====

Database growth over last month



=====
 DATABASE TABLESPACES JWRDB_Production
 =====

TOTAL DATABASE SIZE PER TABLESPACE

Date	Tablespace Name	Filesize (Gb)	Usedsize (Gb)	Percentage free
14-3-2015	ABSDATA	18	12	33
	INDX	38	29	24
13-3-2015	ABSDATA	18	12	33
	INDX	38	29	24
12-3-2015	ABSDATA	18	12	33
	INDX	38	29	24
11-3-2015	ABSDATA	18	12	33
	INDX	38	29	24
10-3-2015	ABSDATA	18	12	33
	INDX	38	29	24
9-3-2015	ABSDATA	18	12	33
	INDX	38	29	24
8-3-2015	ABSDATA	18	12	33
	INDX	38	29	24

Weekly SLA Customer Report

Customer JWR Production
Database ID 43



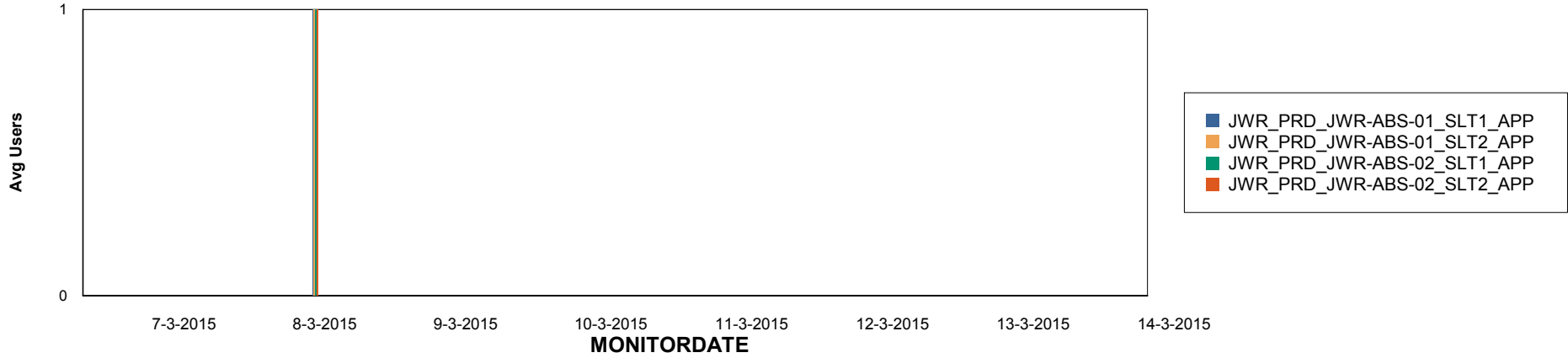
Weekly SLA Customer Report

Customer JWR Production
Database ID 43

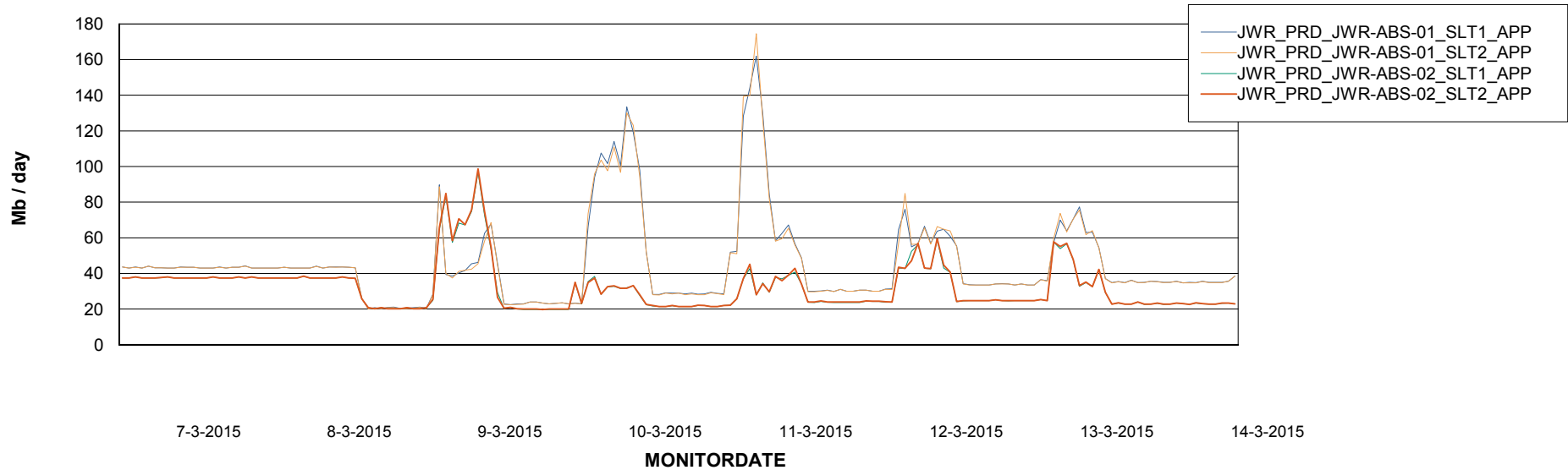


=====
ABSolute Application Server Services
=====

Disaster per ABS Server



Avg memory used per ABS Server Service



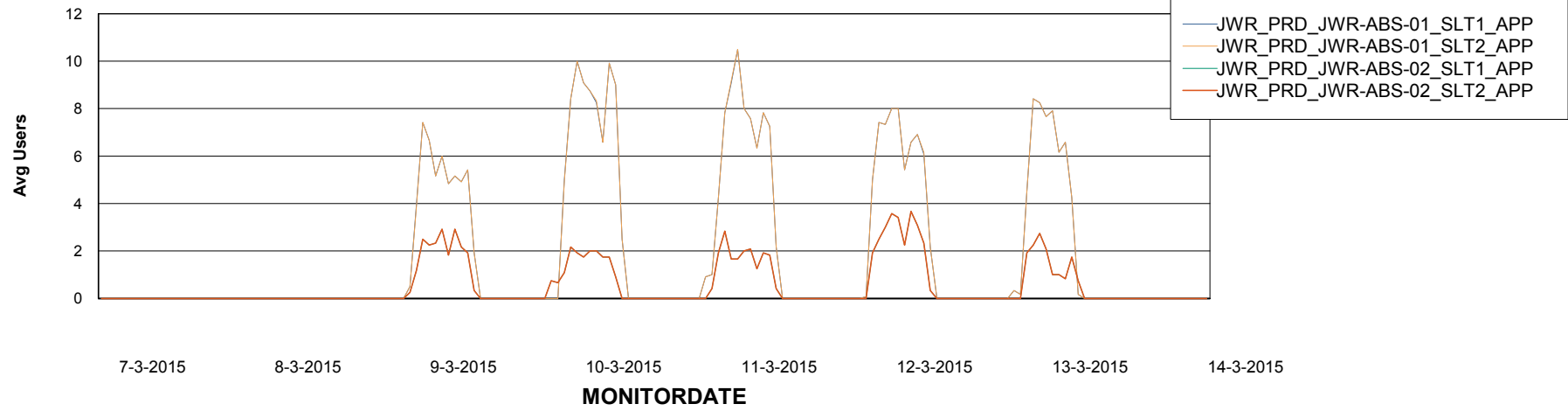
Weekly SLA Customer Report

Customer JWR Production
Database ID 43



=====
ABSolute Application Server Services
=====

Avg users per day per ABS server



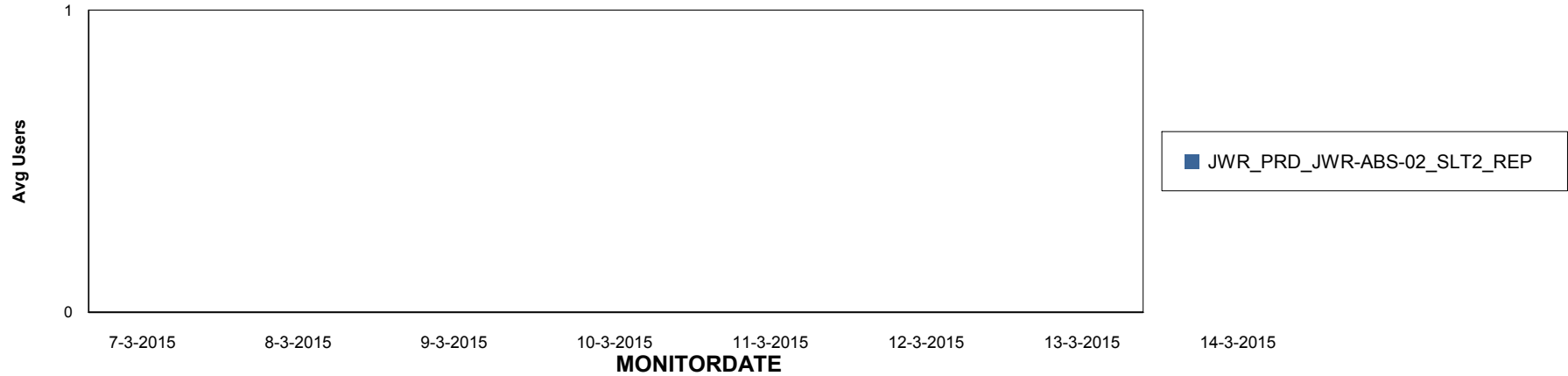
Weekly SLA Customer Report

Customer JWR Production
Database ID 43

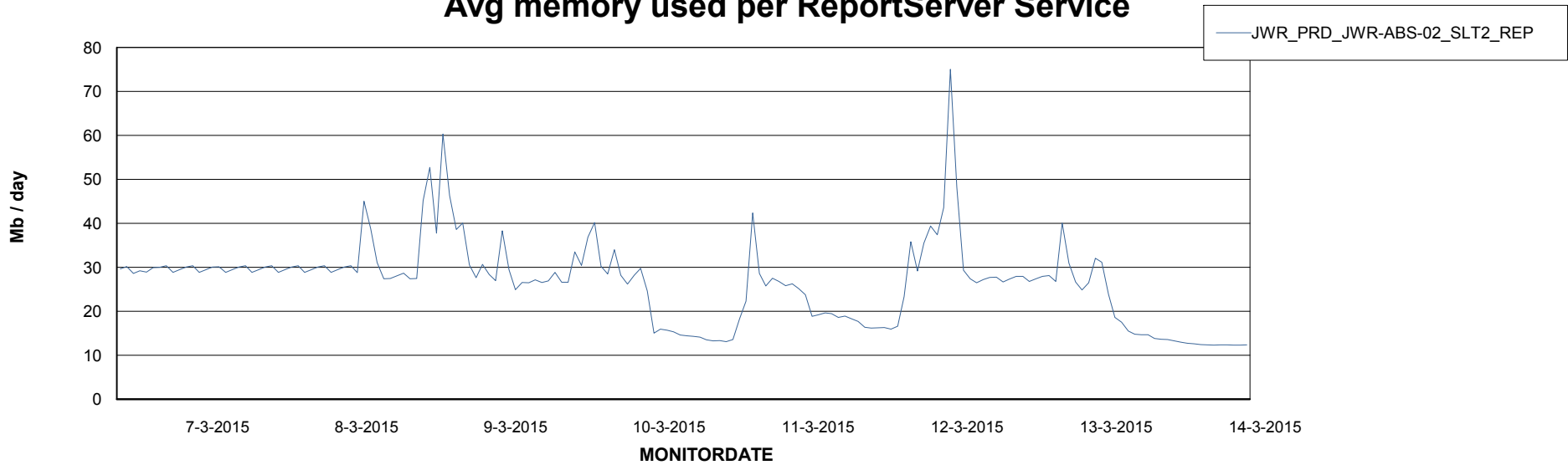


=====
ABSolute Application ReportServer Services
=====

Disaster per ReportServer



Avg memory used per ReportServer Service



Weekly SLA Customer Report

Customer JWR Production
Database ID 43



Disaster per ABS component

