

Weekly SLA Customer Report

Customer FIS_Production
 Database ID 46



=====
 HARDDISK USAGE FIS_PRD_ORACLE1
 =====

	Total disk space on C (GB)	Free disk space on C (GB)	Total disk space on L (GB)	Free disk space on L (GB)	Total disk space on O (GB)	Free disk space on O (GB)
14-3-2015	279	224	279	180	186	35
13-3-2015	279	224	279	181	186	35
12-3-2015	279	224	279	182	186	35
11-3-2015	279	224	279	183	186	35
10-3-2015	279	224	279	185	186	35
9-3-2015	279	224	279	186	186	35
8-3-2015	279	224	279	188	186	35

=====
 HARDDISK USAGE FIS_PRD_ORACLE2
 =====

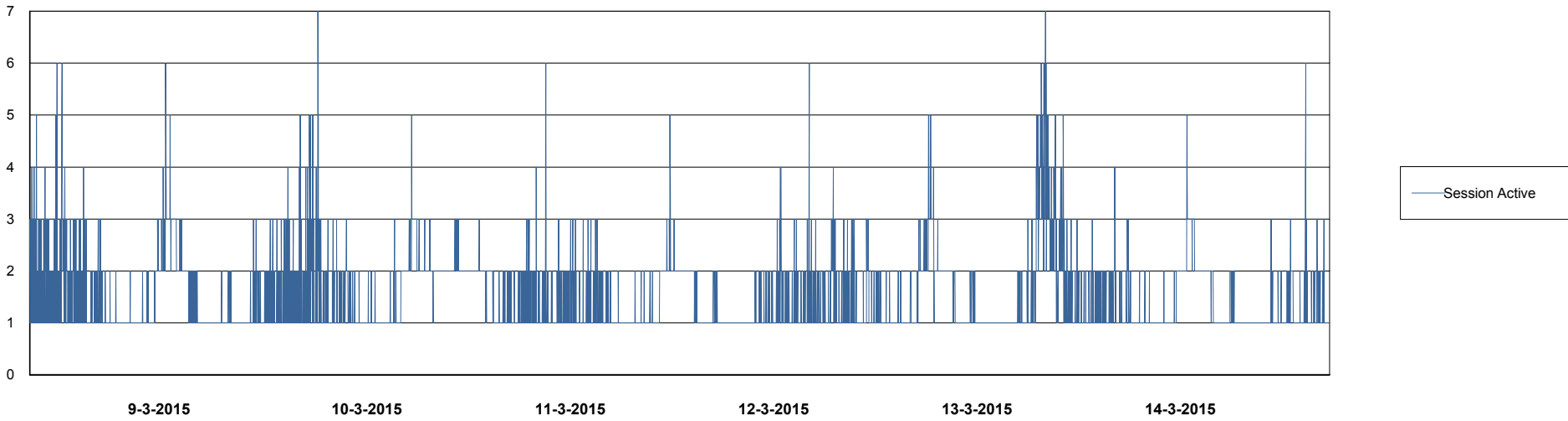
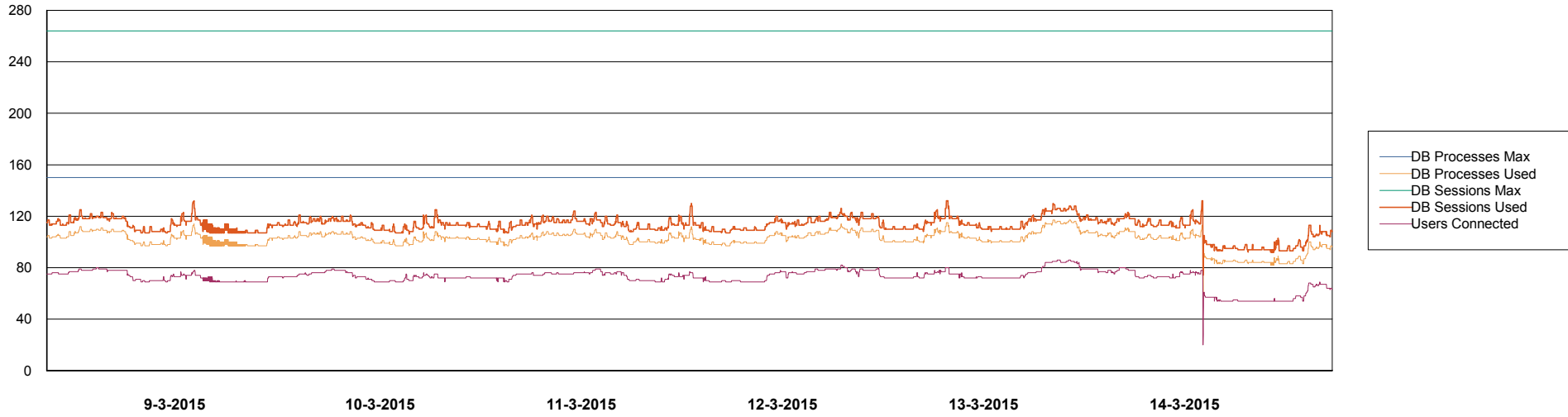
	Total disk space on C (GB)	Free disk space on C (GB)	Total disk space on L (GB)	Free disk space on L (GB)	Total disk space on O (GB)	Free disk space on O (GB)
14-3-2015	279	228	279	134	186	35
13-3-2015	279	228	279	135	186	35
12-3-2015	279	228	279	136	186	35
11-3-2015	279	228	279	138	186	35
10-3-2015	279	228	279	139	186	35
9-3-2015	279	228	279	140	186	35
8-3-2015	279	228	279	142	186	35

Weekly SLA Customer Report

Customer FIS_Production
Database ID 46



DATABASE PERFORMANCE FISDB_Production

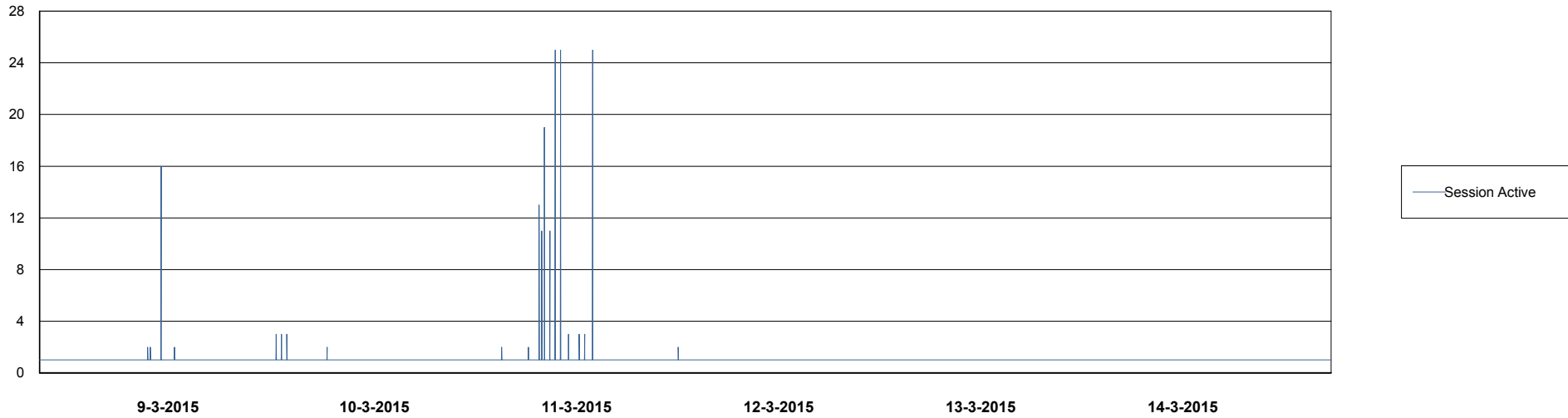
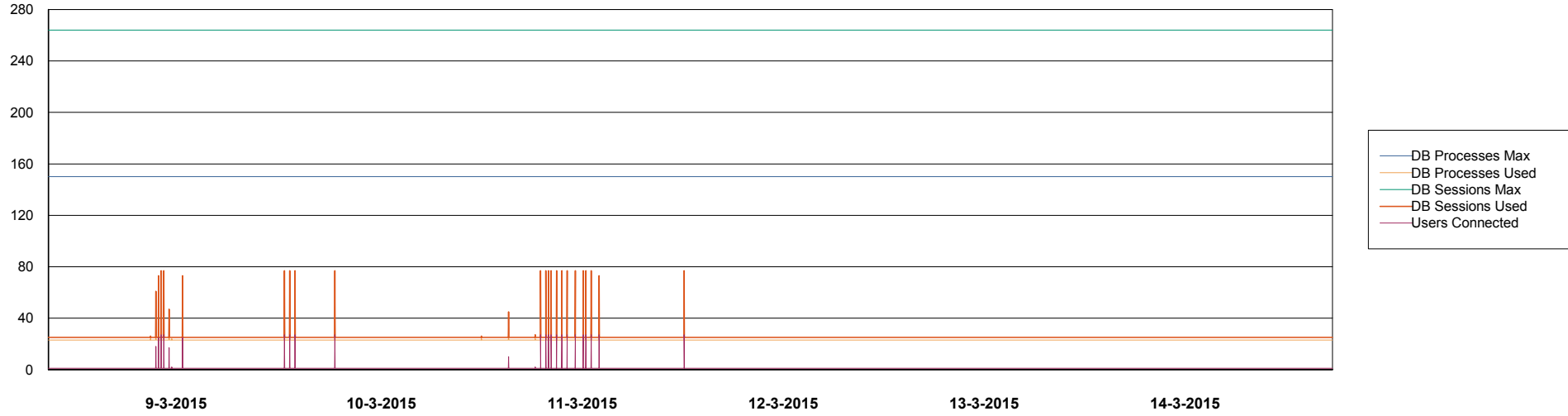


Weekly SLA Customer Report

Customer FIS_Production
Database ID 46



DATABASE PERFORMANCE FISDB_Standby



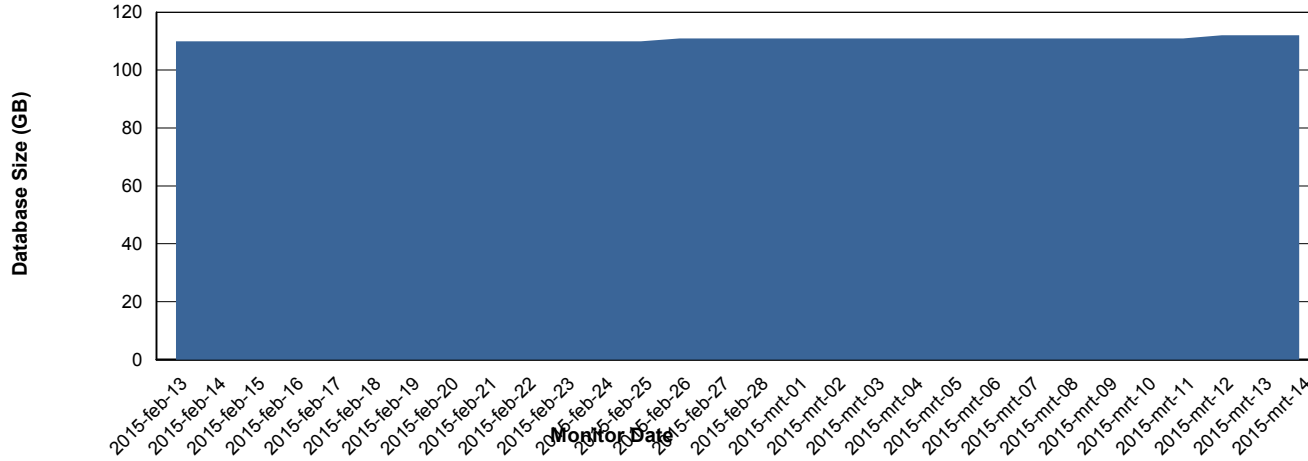
Weekly SLA Customer Report

Customer FIS_Production
 Database ID 46



=====
 DATABASE SIZE FISDB_Production
 =====

Database growth over last month



=====
 DATABASE TABLESPACES FISDB_Production
 =====

TOTAL DATABASE SIZE PER TABLESPACE

Date	Tablespace Name	Filesize (Gb)	Usedsize (Gb)	Percentage free
14-3-2015	ABSDATA	62	50	19
	INDX	75	60	20
13-3-2015	ABSDATA	62	50	19
	INDX	75	60	20
12-3-2015	ABSDATA	62	50	19
	INDX	75	60	20
11-3-2015	ABSDATA	62	50	19
	INDX	75	60	20
10-3-2015	ABSDATA	62	50	19
	INDX	75	60	20
9-3-2015	ABSDATA	62	50	19
	INDX	75	60	20
8-3-2015	ABSDATA	62	50	19
	INDX	75	60	20

Weekly SLA Customer Report

Customer FIS_Production
Database ID 46



=====
STANDBY DATABASE HEALTH FIS_Production
=====

Recovery lag for last 7 days

