

Weekly SLA Customer Report

Customer BCH Production
 Database ID 28



=====
 HARDDISK USAGE BCH_PRD_ORCDB1
 =====

	Total disk space on C (GB)	Free disk space on C (GB)	Total disk space on D (GB)	Free disk space on D (GB)
14-3-2015	278	145	278	101
13-3-2015	278	146	278	98
12-3-2015	278	146	278	90
11-3-2015	278	146	278	93
10-3-2015	278	147	278	96
9-3-2015	278	148	278	99
8-3-2015	278	150	278	100

=====
 HARDDISK USAGE BCH_PRD_ORCDB2
 =====

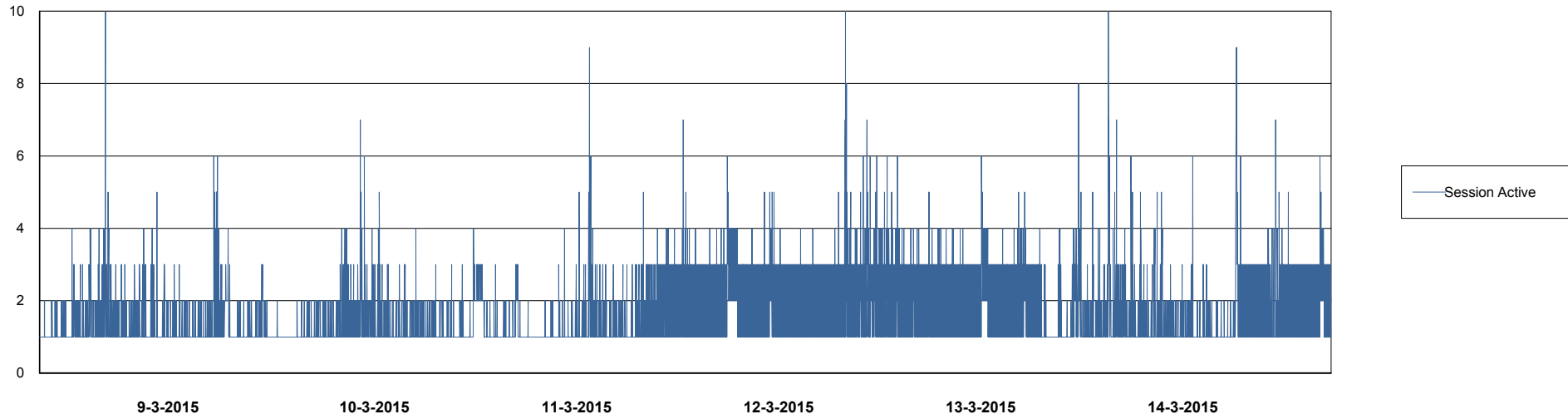
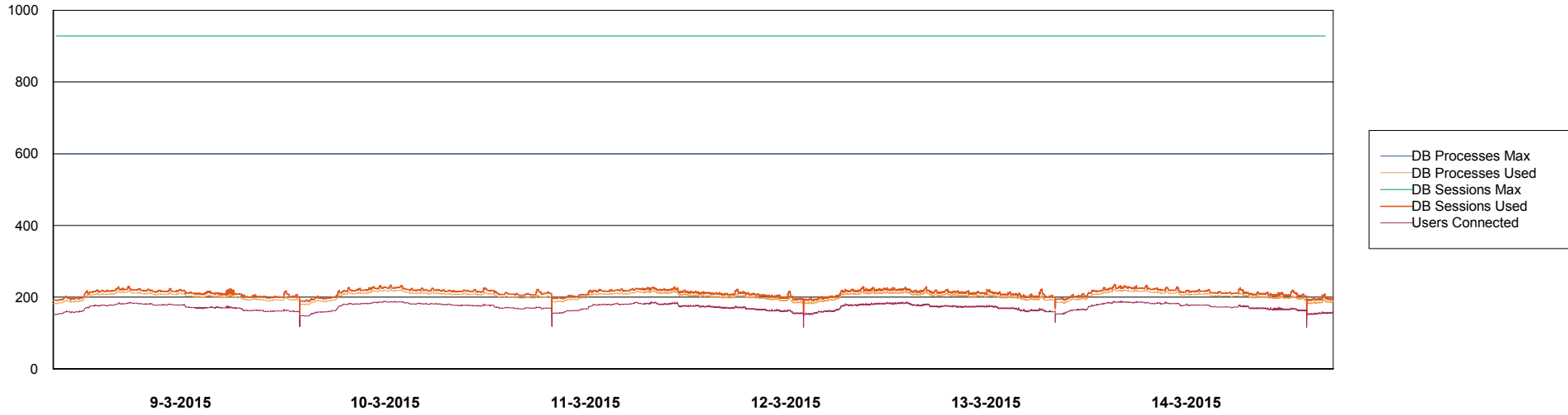
	Total disk space on C (GB)	Free disk space on C (GB)	Total disk space on D (GB)	Free disk space on D (GB)
14-3-2015	278	170	278	99
13-3-2015	278	170	278	95
12-3-2015	278	170	278	87
11-3-2015	278	170	278	90
10-3-2015	278	170	278	93
9-3-2015	278	170	278	96
8-3-2015	278	170	278	98

Weekly SLA Customer Report

Customer BCH Production
Database ID 28



=====
DATABASE PERFORMANCE BCHDB_Production =====
=====

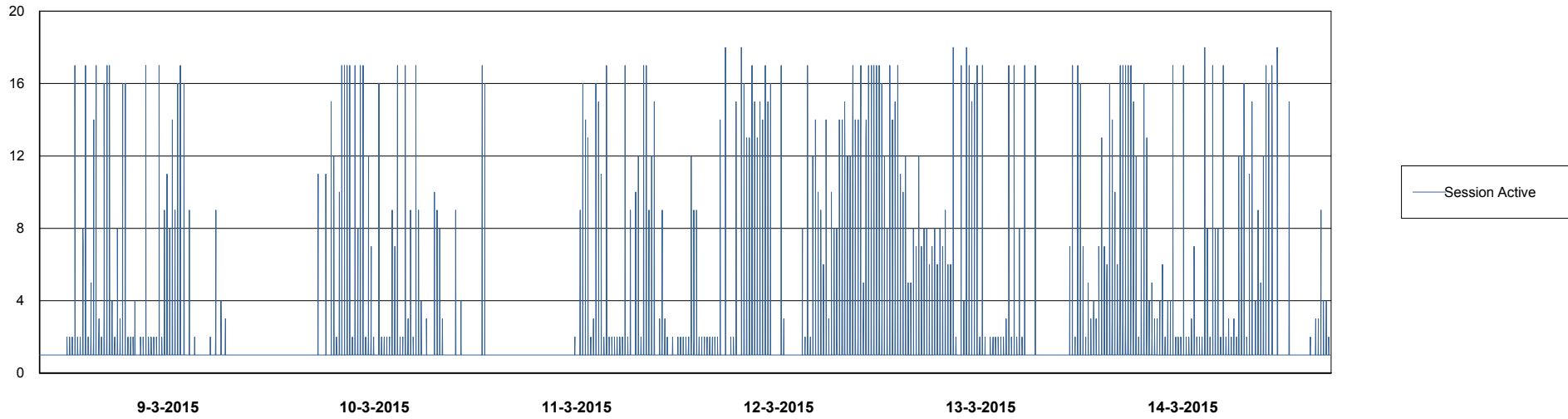
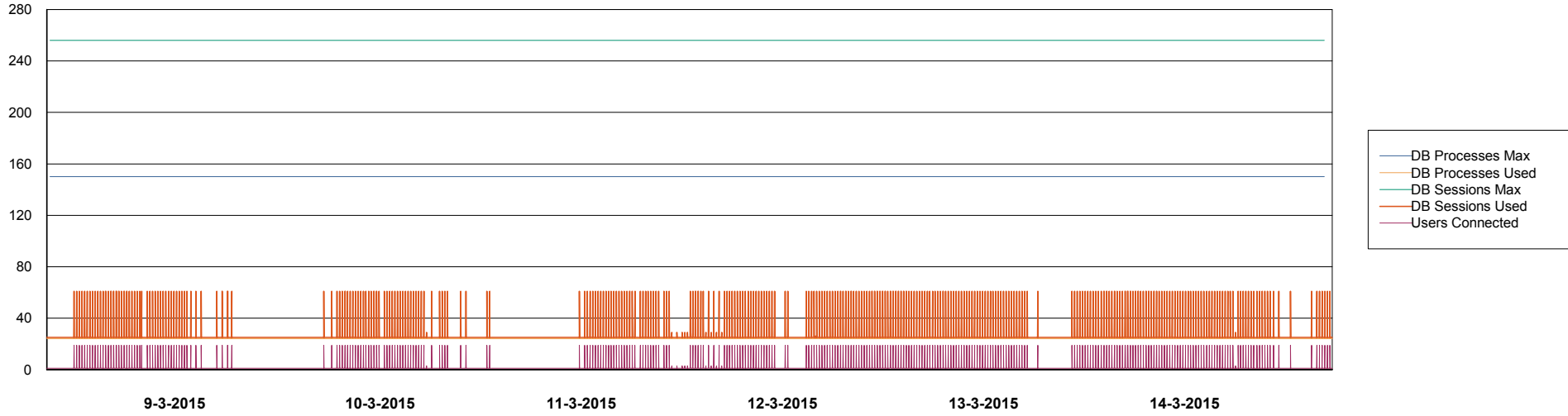


Weekly SLA Customer Report

Customer BCH Production
Database ID 28



DATABASE PERFORMANCE BCHDB_Standby



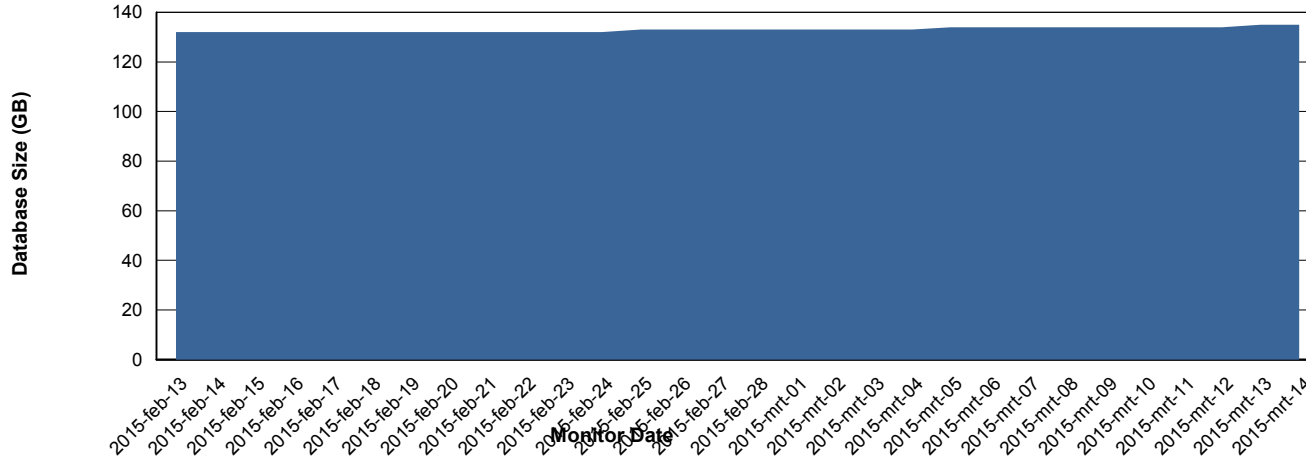
Weekly SLA Customer Report

Customer BCH Production
 Database ID 28



=====
 DATABASE SIZE BCHDB_Production
 =====

Database growth over last month



=====
 DATABASE TABLESPACES BCHDB_Production
 =====

TOTAL DATABASE SIZE PER TABLESPACE

Date	Tablespace Name	Filesize (Gb)	Usedsize (Gb)	Percentage free
14-3-2015	ABSDATA	42	25	40
	INDX	138	108	22
13-3-2015	ABSDATA	42	25	40
	INDX	138	108	22
12-3-2015	ABSDATA	42	25	40
	INDX	138	107	22
11-3-2015	ABSDATA	42	25	40
	INDX	138	107	22
10-3-2015	ABSDATA	42	25	40
	INDX	138	107	22
9-3-2015	ABSDATA	42	25	40
	INDX	138	107	22
8-3-2015	ABSDATA	42	25	40
	INDX	138	107	22

Weekly SLA Customer Report

Customer BCH Production
Database ID 28



=====
STANDBY DATABASE HEALTH BCH Production
=====

Recovery lag for last 7 days

