

## Weekly SLA Customer Report

Customer AUJ\_Production  
 Database ID 41



=====  
 HARDDISK USAGE AUJ\_PRD\_ORACLE\_BI1  
 =====

	Used disk space on \$1 (GB)	Total disk space on \$1 (GB)	Free disk space on \$1 (GB)
14-3-2015	448	526	51
13-3-2015	441	526	58
12-3-2015	441	526	58
11-3-2015	441	526	58
10-3-2015	440	526	58
9-3-2015	440	526	59
8-3-2015	446	526	53

=====  
 HARDDISK USAGE AUJ\_PRD\_ORACLE1  
 =====

	Used disk space on \$1 (GB)	Total disk space on \$1 (GB)	Free disk space on \$1 (GB)
14-3-2015	137	290	67
13-3-2015	137	290	67
12-3-2015	137	290	67
11-3-2015	137	290	67
10-3-2015	137	290	67
9-3-2015	136	290	67
8-3-2015	136	290	67

# Weekly SLA Customer Report

Customer AUJ\_Production  
Database ID 41



=====  
HARDDISK USAGE AUJ\_PRD\_ORACLE2  
=====

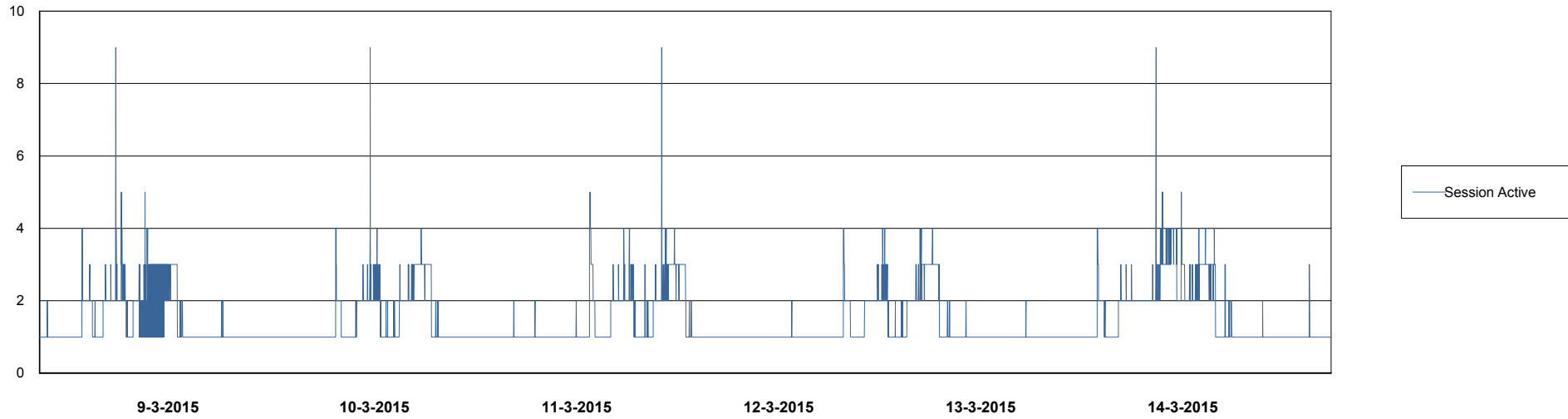
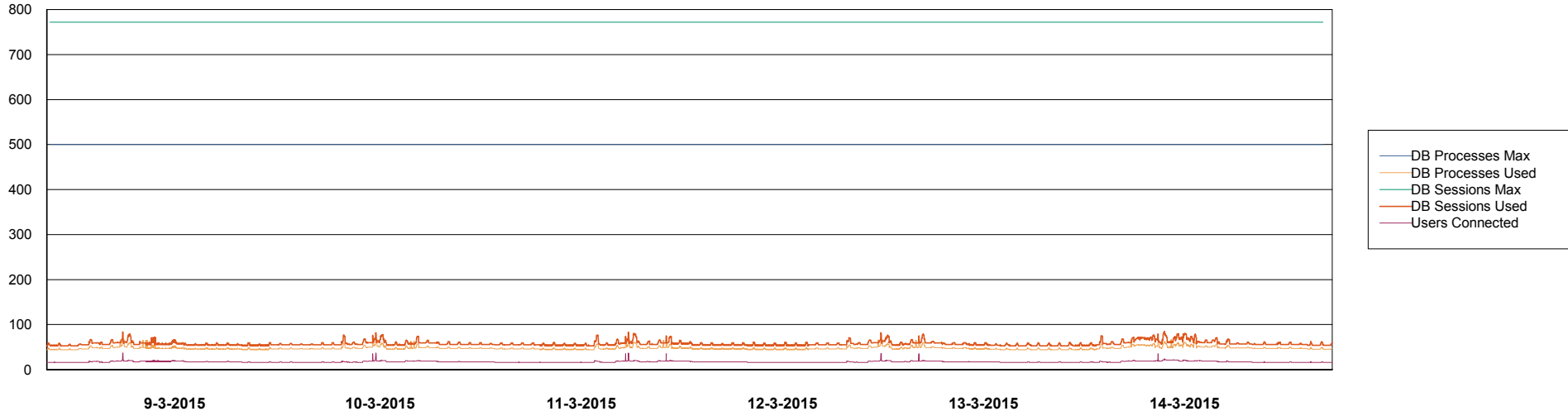
	Used disk space on \$1 (GB)	Total disk space on \$1 (GB)	Free disk space on \$1 (GB)
14-3-2015	69	174	98
13-3-2015	69	174	98
12-3-2015	69	174	98
11-3-2015	69	174	98
10-3-2015	69	172	98
9-3-2015	68	176	98
8-3-2015	67	174	98

# Weekly SLA Customer Report

Customer AUJ\_Production  
Database ID 41



## DATABASE PERFORMANCE AUJDB\_BI

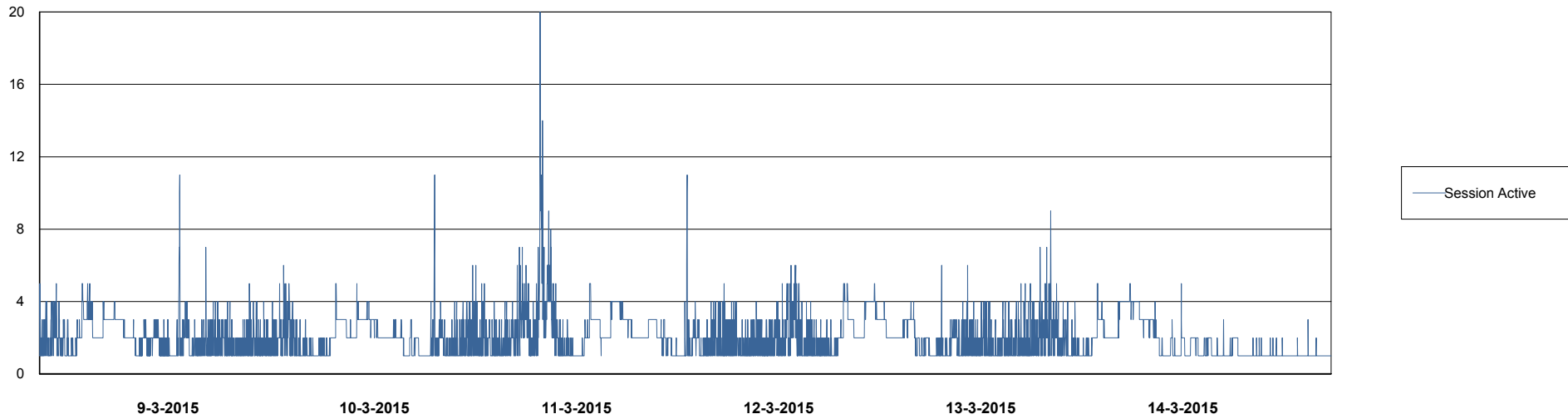
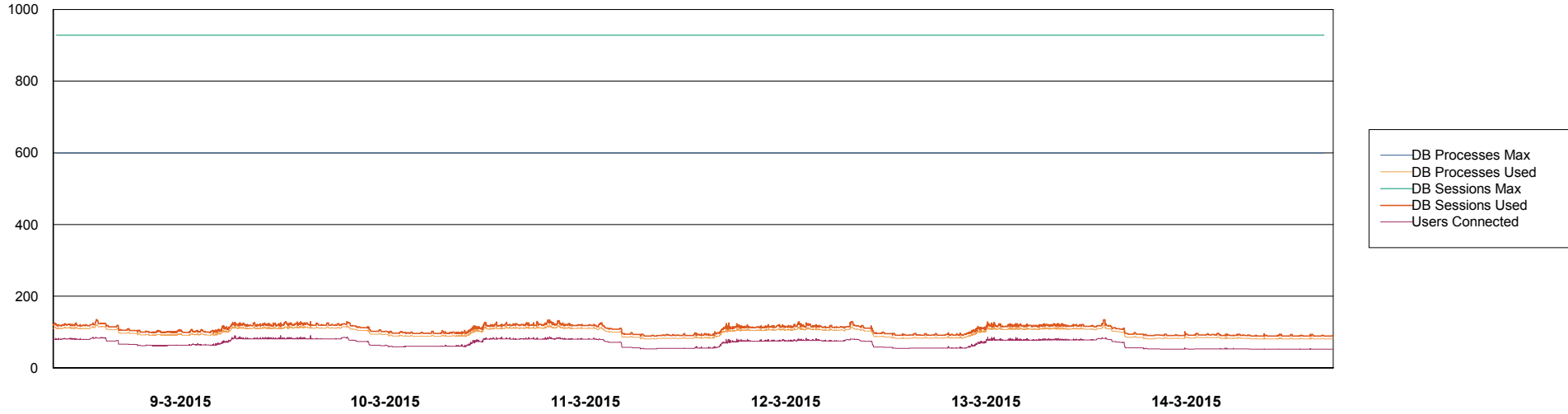


# Weekly SLA Customer Report

Customer AUJ\_Production  
Database ID 41



DATABASE PERFORMANCE AUJDB\_Production

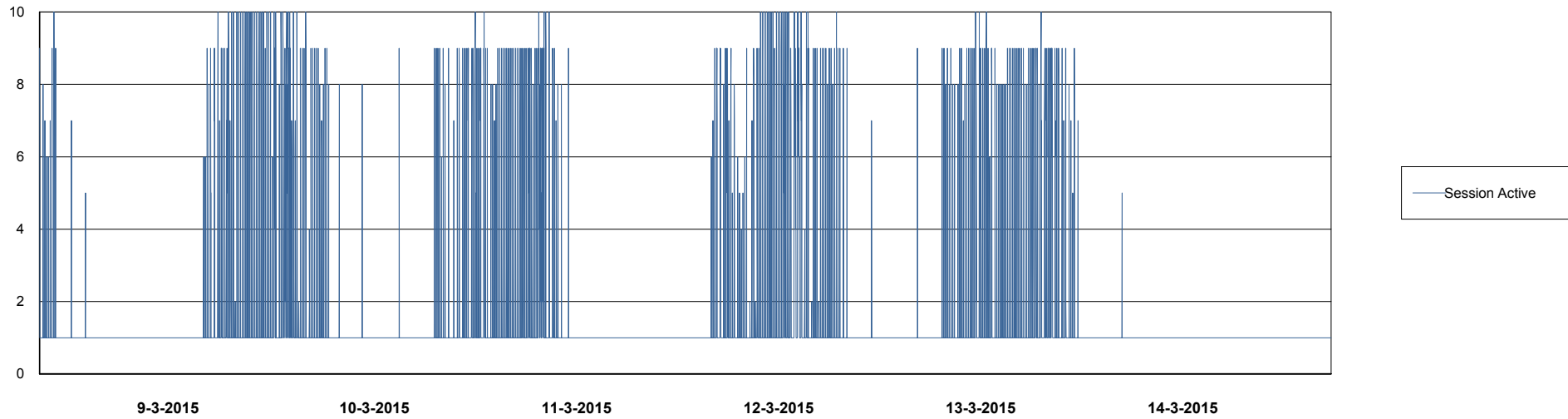
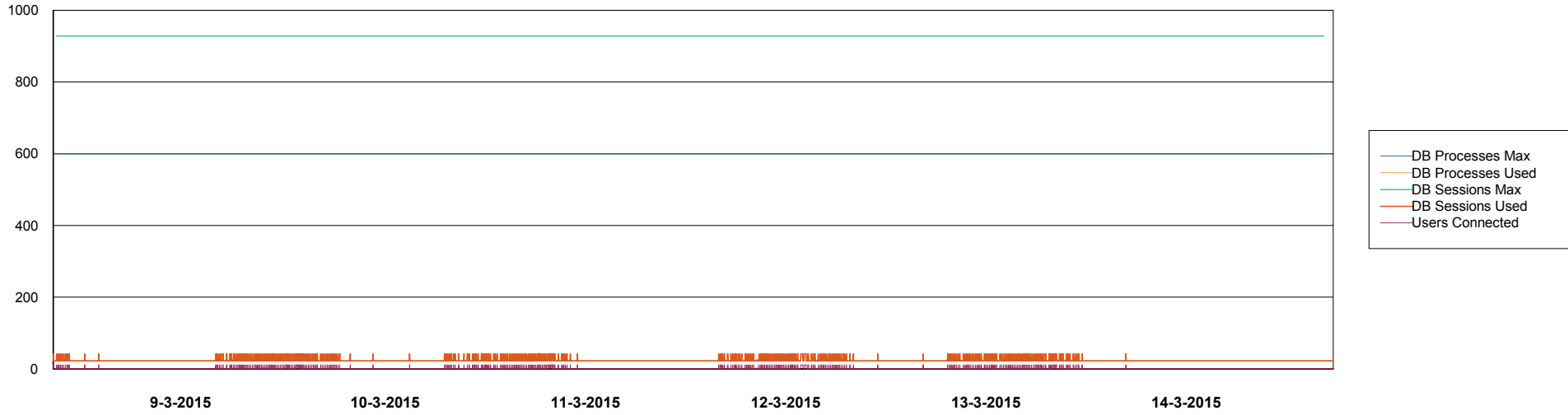


# Weekly SLA Customer Report

Customer AUJ\_Production  
Database ID 41



## DATABASE PERFORMANCE AUJDB\_Standby

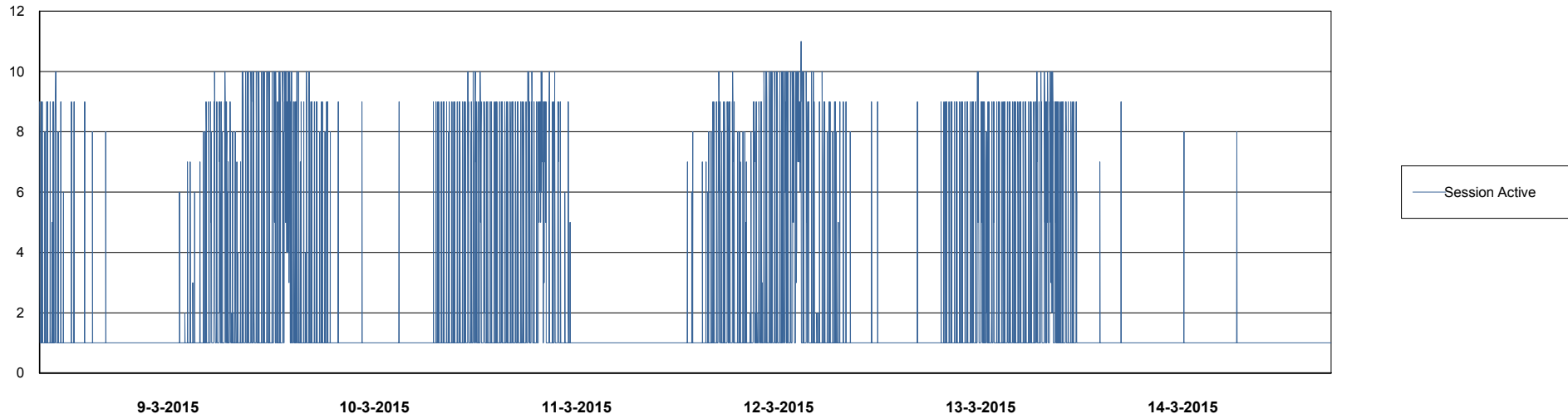
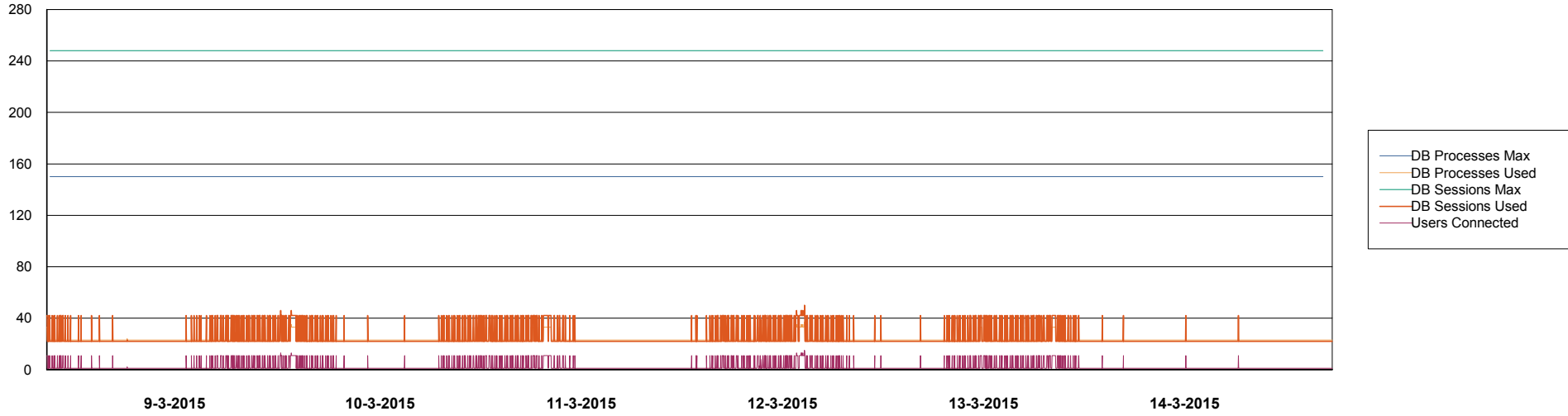


# Weekly SLA Customer Report

Customer AUJ\_Production  
Database ID 41



DATABASE PERFORMANCE AUJDB3\_Standby



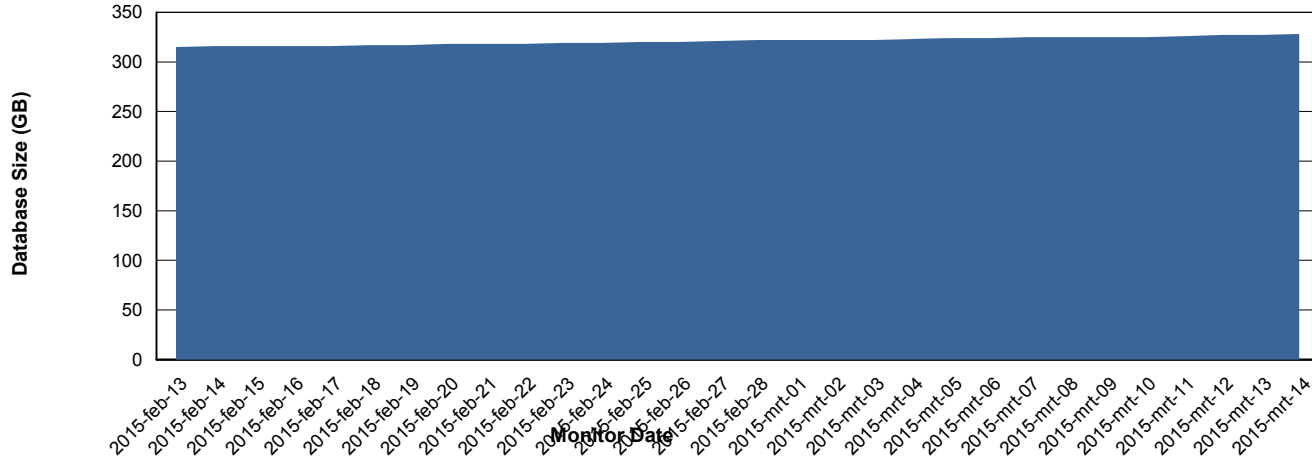
# Weekly SLA Customer Report

Customer AUJ\_Production  
Database ID 41



=====  
DATABASE SIZE AUJDB\_Production  
=====

## Database growth over last month



# Weekly SLA Customer Report

Customer AUJ\_Production  
Database ID 41



=====  
DATABASE TABLESPACES AUJDB\_BI  
=====

TOTAL DATABASE SIZE PER TABLESPACE

Date	Tablespace Name	Filesize (Gb)	Usedsize (Gb)	Percentage free
14-3-2015	ABSDATA	112	84	25
	INDX	187	146	22
13-3-2015	ABSDATA	112	84	25
	INDX	187	146	22
12-3-2015	ABSDATA	112	84	25
	INDX	187	146	22
11-3-2015	ABSDATA	112	84	25
	INDX	187	146	22
10-3-2015	ABSDATA	112	84	25
	INDX	187	145	22
9-3-2015	ABSDATA	112	84	25
	INDX	187	145	22
8-3-2015	ABSDATA	112	83	26
	INDX	187	145	22

# Weekly SLA Customer Report

Customer AUJ\_Production  
 Database ID 41



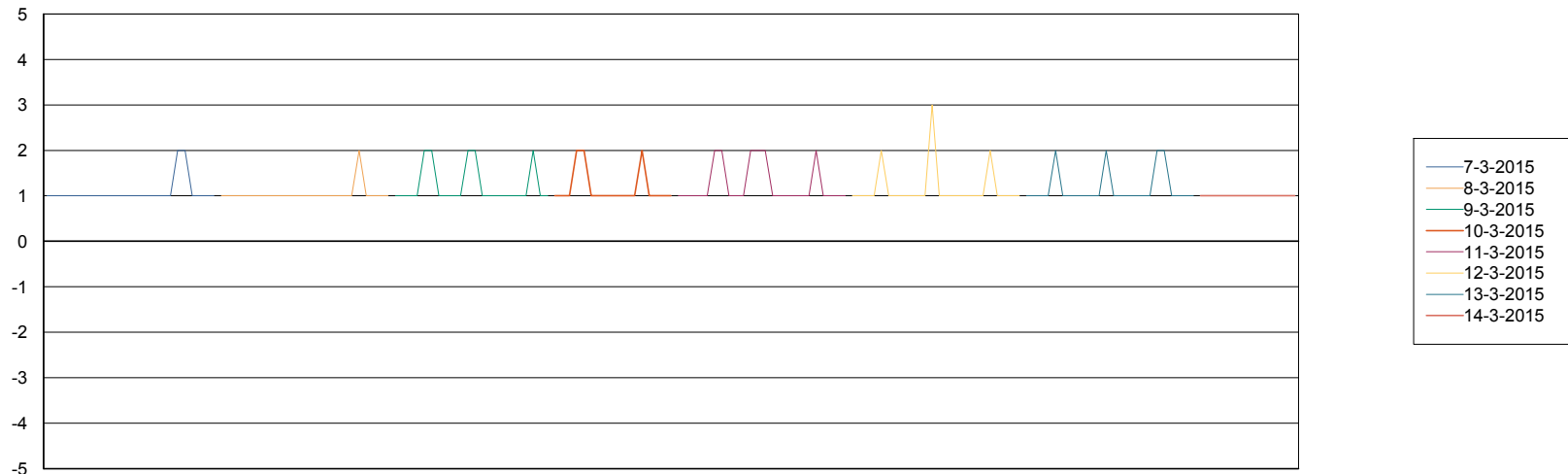
=====  
 DATABASE TABLESPACES AUJDB\_Production  
 =====

TOTAL DATABASE SIZE PER TABLESPACE

Date	Tablespace Name	Filesize (Gb)	Usedsize (Gb)	Percentage free
14-3-2015	ABSDATA	170	140	18
	INDX	224	186	17
13-3-2015	ABSDATA	170	140	18
	INDX	224	186	17
12-3-2015	ABSDATA	170	139	18
	INDX	224	186	17
11-3-2015	ABSDATA	170	139	18
	INDX	224	185	17
10-3-2015	ABSDATA	170	139	18
	INDX	224	185	17
9-3-2015	ABSDATA	170	139	18
	INDX	224	185	17
8-3-2015	ABSDATA	168	138	18
	INDX	215	184	14

=====  
 STANDBY DATABASE HEALTH AUJ\_Production  
 =====

Recovery lag for last 7 days



# Weekly SLA Customer Report

---

Customer AUJ\_Production  
Database ID 41

