

## Weekly SLA Customer Report

Customer      PCO Production  
 Database ID    44



=====  
 HARDDISK USAGE    PCO\_PRD\_ORACLE1  
 =====

	Total disk space on C (GB)	Free disk space on C (GB)	Total disk space on D (GB)	Free disk space on D (GB)
7-3-2015	279	217	838	139
6-3-2015	279	217	838	141
5-3-2015	279	217	838	144
4-3-2015	279	217	838	147
3-3-2015	279	217	838	166
2-3-2015	279	217	838	132
1-3-2015	279	217	838	137

=====  
 HARDDISK USAGE    PCO\_PRD\_ORACLE2  
 =====

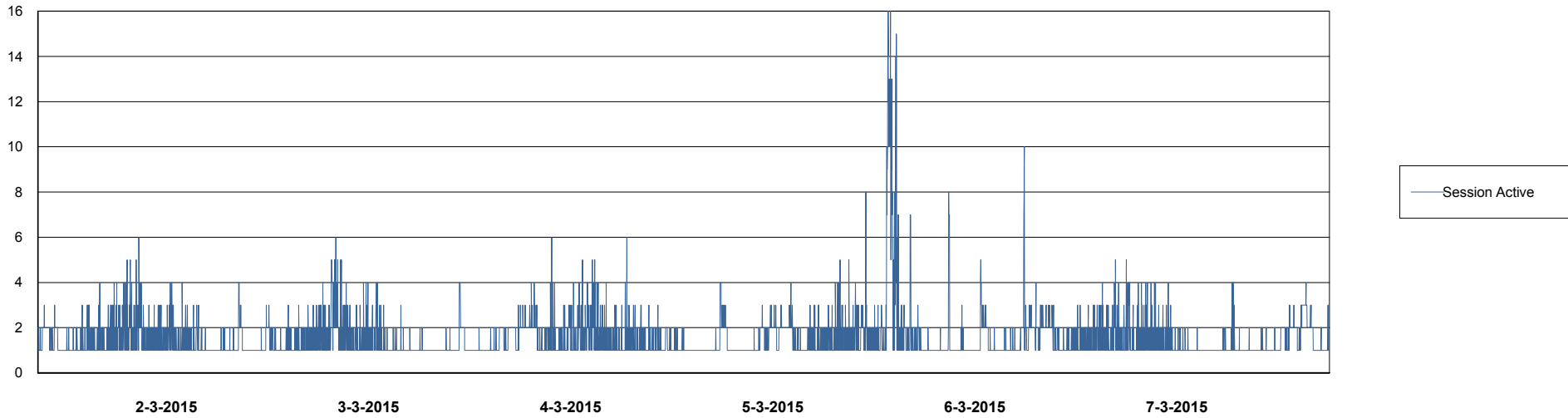
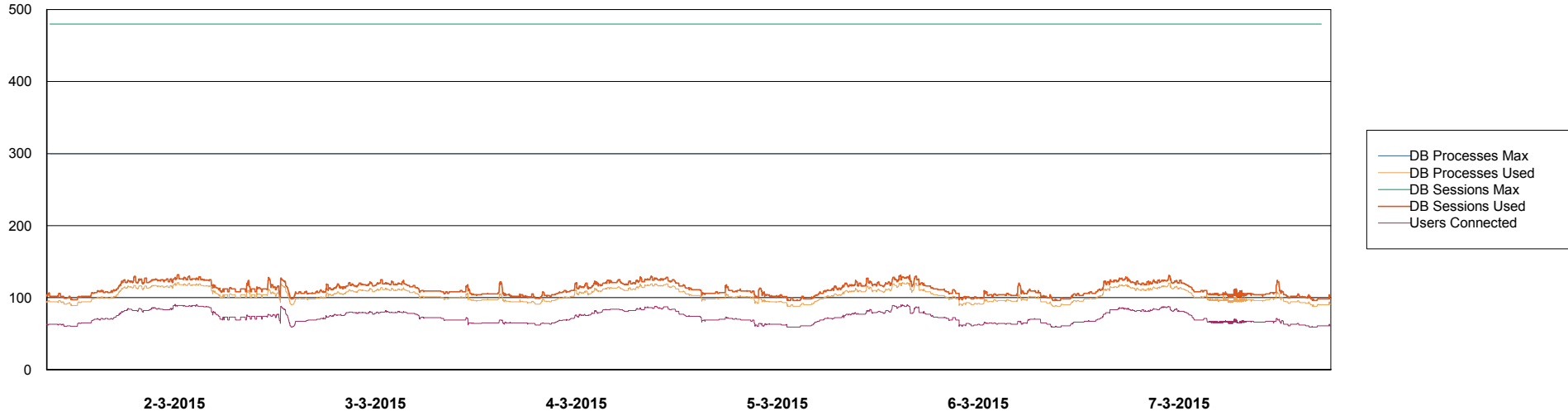
	Total disk space on C (GB)	Free disk space on C (GB)	Total disk space on D (GB)	Free disk space on D (GB)
7-3-2015	279	217	838	547
6-3-2015	279	216	838	549
5-3-2015	279	216	838	552
4-3-2015	279	217	838	555
3-3-2015	279	218	838	557
2-3-2015	279	219	838	560
1-3-2015	279	220	838	562

# Weekly SLA Customer Report

Customer PCO Production  
Database ID 44



## DATABASE PERFORMANCE PCODB\_Production

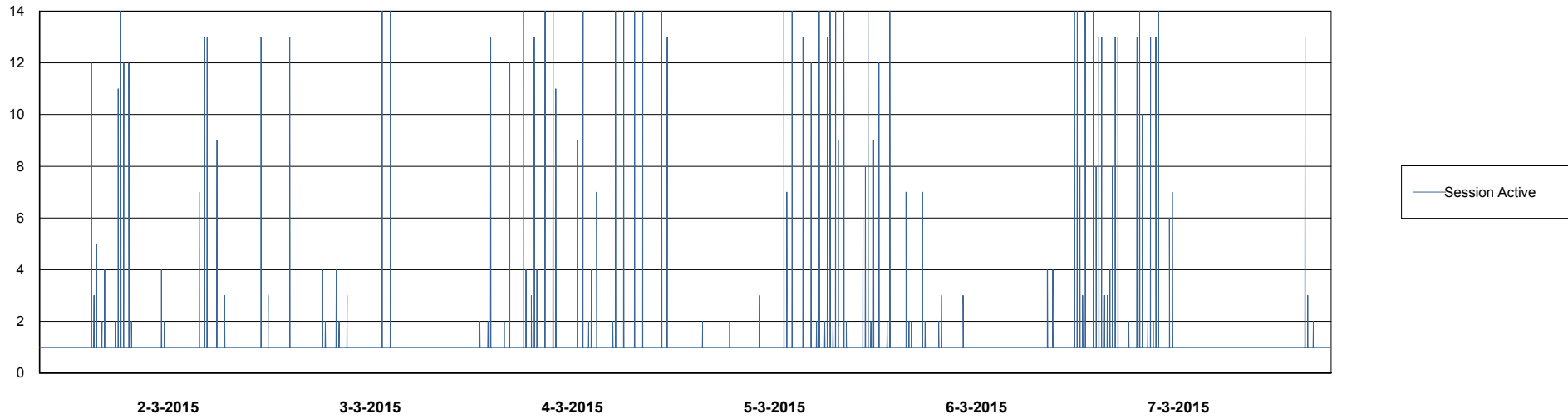
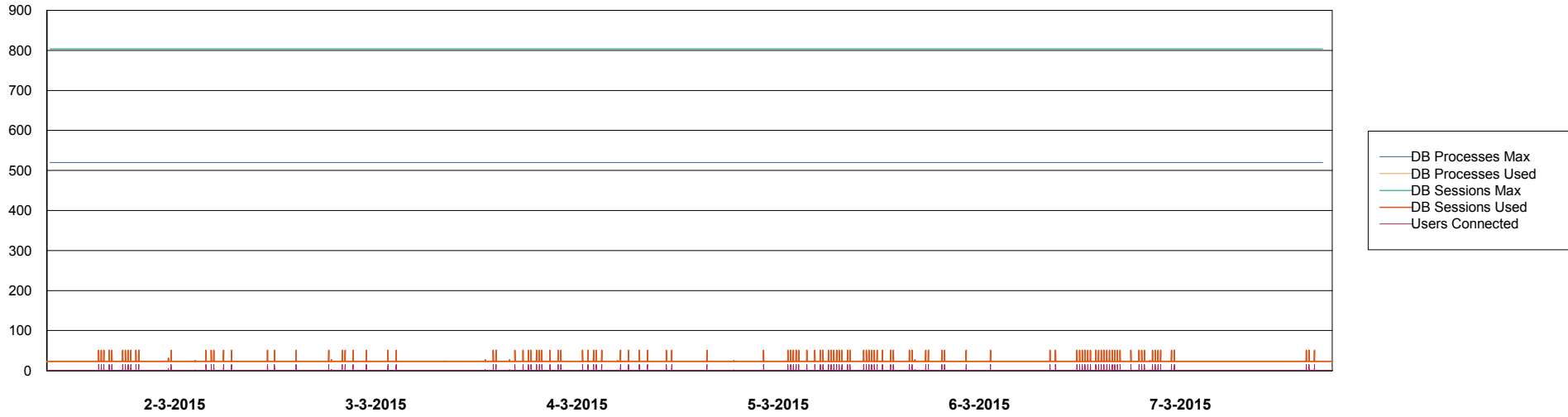


# Weekly SLA Customer Report

Customer PCO Production  
Database ID 44



## DATABASE PERFORMANCE PCODB\_Standby



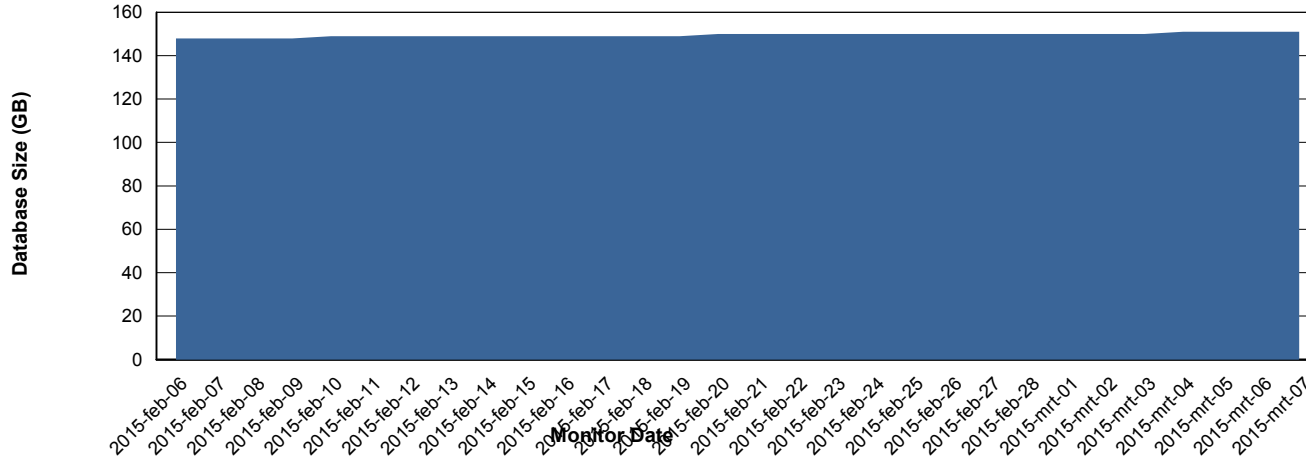
# Weekly SLA Customer Report

Customer PCO Production  
 Database ID 44



=====  
 DATABASE SIZE PCODB\_Production  
 =====

## Database growth over last month



=====  
 DATABASE TABLESPACES PCODB\_Production  
 =====

### TOTAL DATABASE SIZE PER TABLESPACE

Date	Tablespace Name	Filesize (Gb)	Usedsize (Gb)	Percentage free
7-3-2015	ABSDATA	78	61	22
	INDX	109	88	19
6-3-2015	ABSDATA	78	61	22
	INDX	109	88	19
5-3-2015	ABSDATA	78	61	22
	INDX	109	88	19
4-3-2015	ABSDATA	78	61	22
	INDX	109	88	19
3-3-2015	ABSDATA	78	61	22
	INDX	109	88	19
2-3-2015	ABSDATA	78	61	22
	INDX	109	88	19
1-3-2015	ABSDATA	78	61	22
	INDX	109	88	19

# Weekly SLA Customer Report

Customer PCO Production  
Database ID 44



=====  
STANDBY DATABASE HEALTH PCO Production  
=====

### Recovery lag for last 7 days

