

Weekly SLA Customer Report

Customer NIX_Production
 Database ID 51



=====
 HARDDISK USAGE NIX_PRD_ABSAPP1
 =====

	Total disk space on C (GB)	Free disk space on C (GB)
7-3-2015	136	89
6-3-2015	136	89
5-3-2015	136	89
4-3-2015	136	89
3-3-2015	136	89
2-3-2015	136	89
1-3-2015	136	89

=====
 HARDDISK USAGE NIX_PRD_ABSWEB1
 =====

	Total disk space on C (GB)	Free disk space on C (GB)	Total disk space on D (GB)
7-3-2015	930	729	3
6-3-2015	930	740	3
5-3-2015	930	740	3
4-3-2015	930	740	3
3-3-2015	930	740	3
2-3-2015	930	741	3
1-3-2015	930	741	3

Weekly SLA Customer Report

Customer NIX_Production
 Database ID 51



=====
 HARDDISK USAGE NIX_PRD_ORACLE_B11
 =====

	Total disk space on C (GB)	Free disk space on C (GB)	Total disk space on D (GB)	Free disk space on D (GB)	Total disk space on E (GB)	Free disk space on E (GB)
7-3-2015	99	52	279	169	99	28
6-3-2015	99	52	279	169	99	28
5-3-2015	99	52	279	169	99	27
4-3-2015	99	52	279	169	99	28
3-3-2015	99	52	279	169	99	28
2-3-2015	99	52	279	169	99	28
1-3-2015	99	52	279	169	99	28

=====
 HARDDISK USAGE NIX_PRD_ORCDB1
 =====

	Total disk space on C (GB)	Free disk space on C (GB)	Total disk space on D (GB)	Free disk space on D (GB)	Total disk space on E (GB)	Free disk space on E (GB)
7-3-2015	136	67	136	27	136	48
6-3-2015	136	67	136	27	136	49
5-3-2015	136	67	136	27	136	49
4-3-2015	136	67	136	27	136	50
3-3-2015	136	67	136	27	136	51
2-3-2015	136	67	136	27	136	50
1-3-2015	136	67	136	27	136	50

Weekly SLA Customer Report

Customer NIX_Production
 Database ID 51



=====

HARDDISK USAGE NIX_PRD_ORCDB2

=====

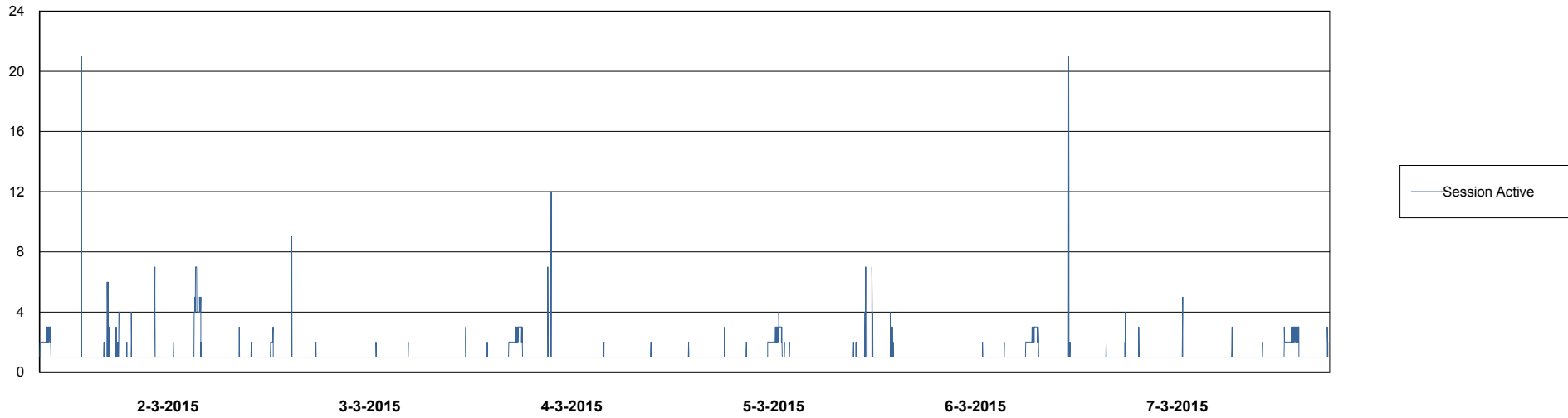
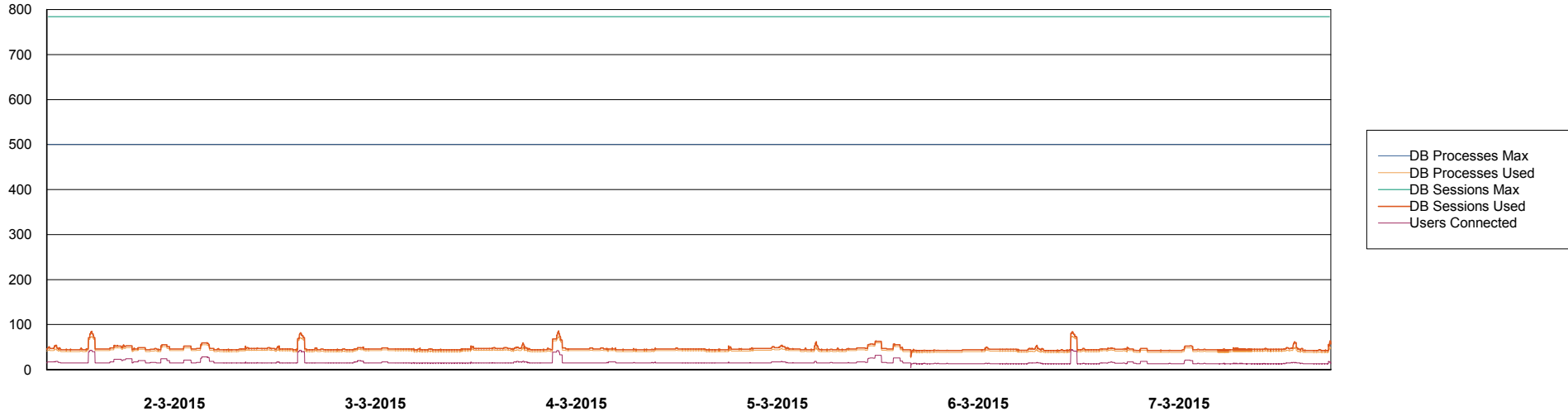
	Total disk space on C (GB)	Free disk space on C (GB)	Total disk space on D (GB)	Free disk space on D (GB)	Total disk space on E (GB)	Free disk space on E (GB)
7-3-2015	279	64	279	43	279	62
6-3-2015	279	63	279	43	279	79
5-3-2015	279	64	279	43	279	87
4-3-2015	279	64	279	43	279	89
3-3-2015	279	64	279	43	279	109
2-3-2015	279	64	279	43	279	117
1-3-2015	279	64	279	43	279	43

Weekly SLA Customer Report

Customer NIX_Production
Database ID 51



=====
DATABASE PERFORMANCE NIXDB_BI =====
=====



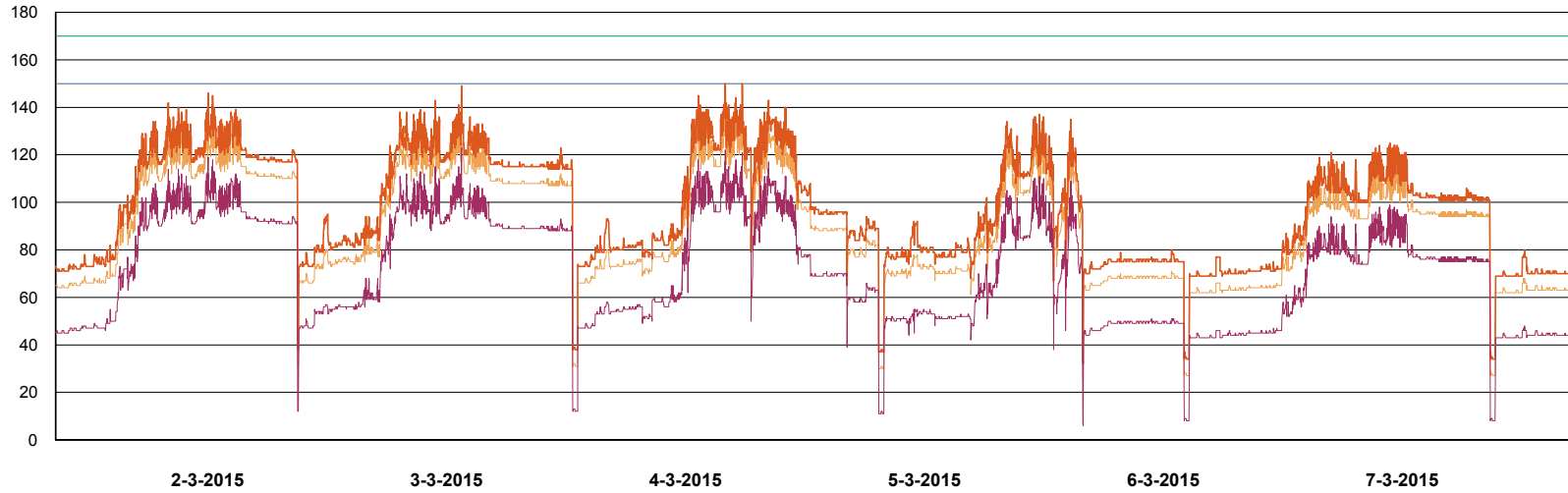
Weekly SLA Customer Report

Customer NIX_Production
Database ID 51

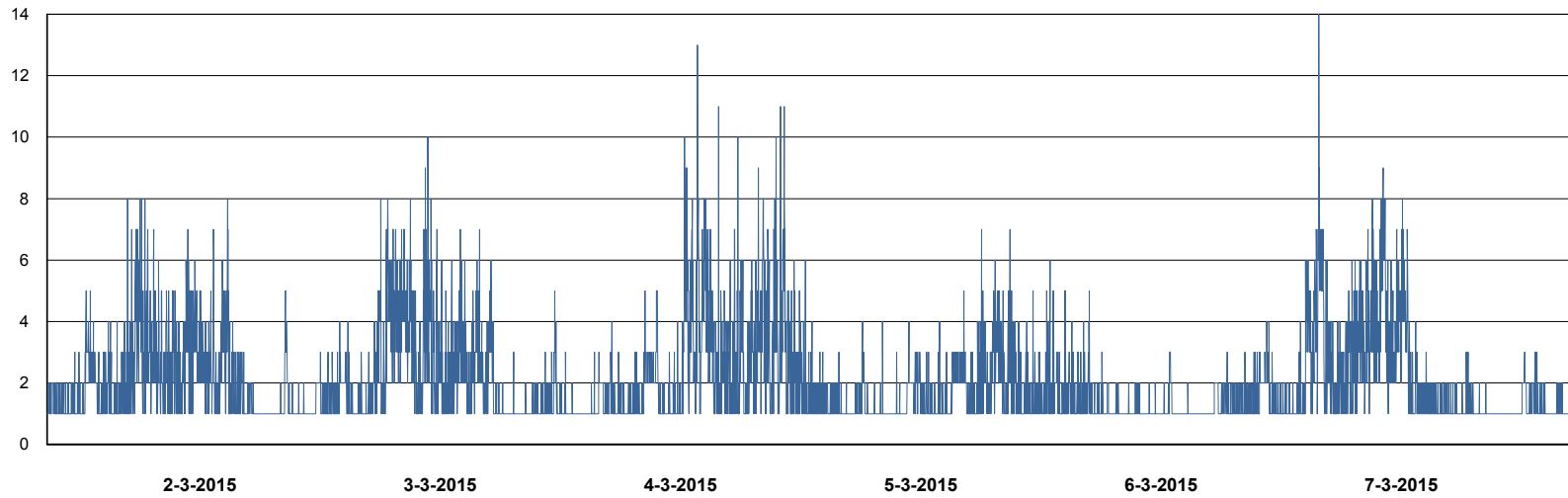


DATABASE PERFORMANCE

NIXDB_Production



- DB Processes Max
- DB Processes Used
- DB Sessions Max
- DB Sessions Used
- Users Connected



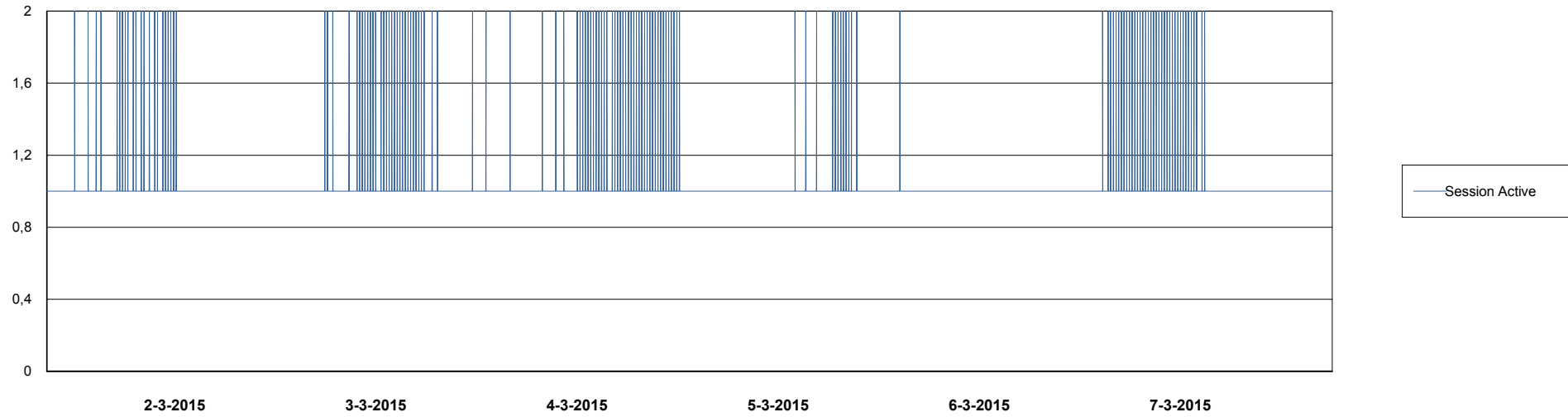
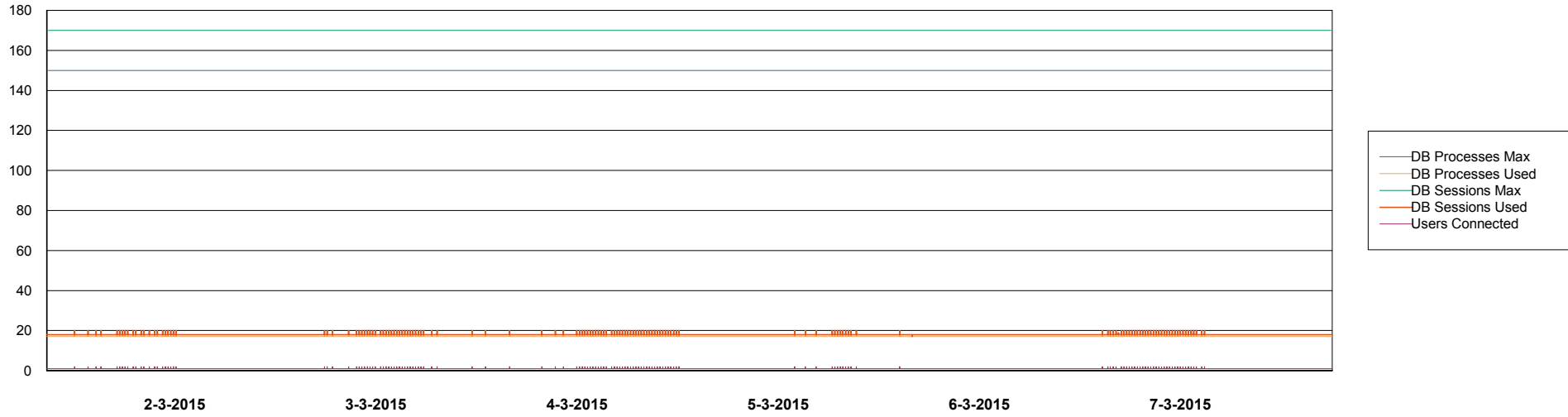
- Session Active

Weekly SLA Customer Report

Customer NIX_Production
Database ID 51



DATABASE PERFORMANCE NIXDB_Standby



Weekly SLA Customer Report

Customer NIX_Production
 Database ID 51



=====
 DATABASE TABLESPACES NIXDB_BI
 =====
 TOTAL DATABASE SIZE PER TABLESPACE

Date	Tablespace Name	Filesize (Gb)	Usedsize (Gb)	Percentage free
7-3-2015	ABSDATA	28	20	29
	INDX	44	31	30
6-3-2015	ABSDATA	28	20	29
	INDX	44	31	30
5-3-2015	ABSDATA	28	20	29
	INDX	44	31	30
4-3-2015	ABSDATA	28	20	29
	INDX	44	31	30
3-3-2015	ABSDATA	28	20	29
	INDX	44	31	30
2-3-2015	ABSDATA	28	20	29
	INDX	44	31	30
1-3-2015	ABSDATA	28	20	29
	INDX	44	31	30

Weekly SLA Customer Report

Customer NIX_Production
Database ID 51



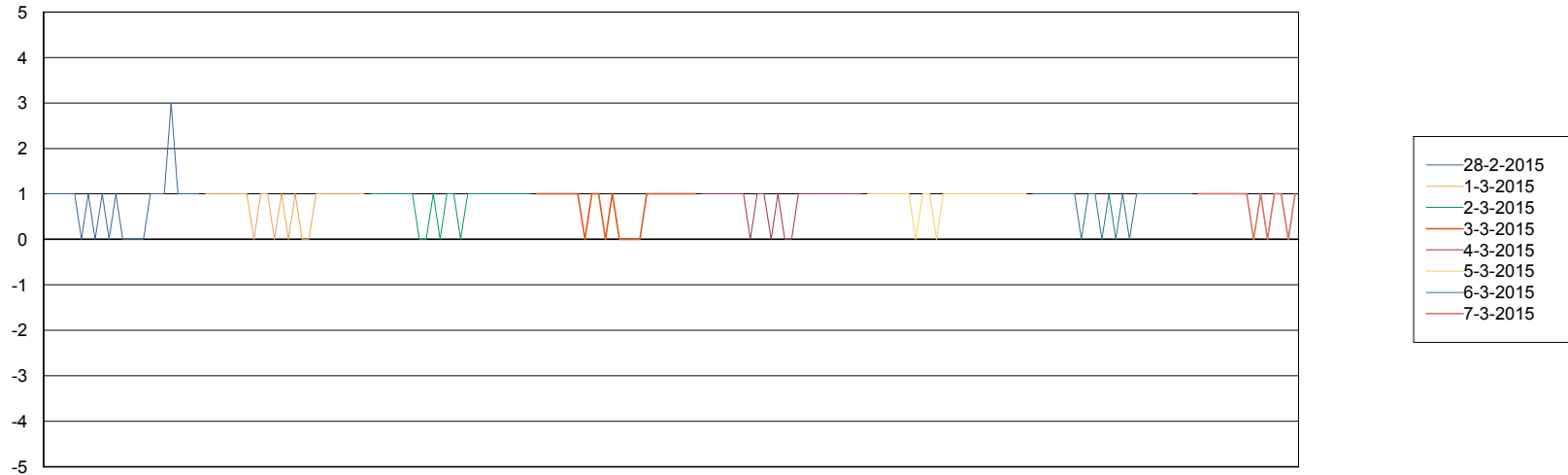
=====
DATABASE TABLESPACES NIXDB_Production
=====

TOTAL DATABASE SIZE PER TABLESPACE

Date	Tablespace Name	Filesize (Gb)	Usedsize (Gb)	Percentage free
7-3-2015	ABSDATA	40	31	23
	INDX	109	87	20
6-3-2015	ABSDATA	40	31	23
	INDX	109	87	20
5-3-2015	ABSDATA	40	31	23
	INDX	109	87	20
4-3-2015	ABSDATA	40	31	23
	INDX	109	87	20
3-3-2015	ABSDATA	40	31	23
	INDX	109	87	20
2-3-2015	ABSDATA	40	31	23
	INDX	109	87	20
1-3-2015	ABSDATA	40	31	23
	INDX	109	87	20

=====
STANDBY DATABASE HEALTH NIX_Production
=====

Recovery lag for last 7 days



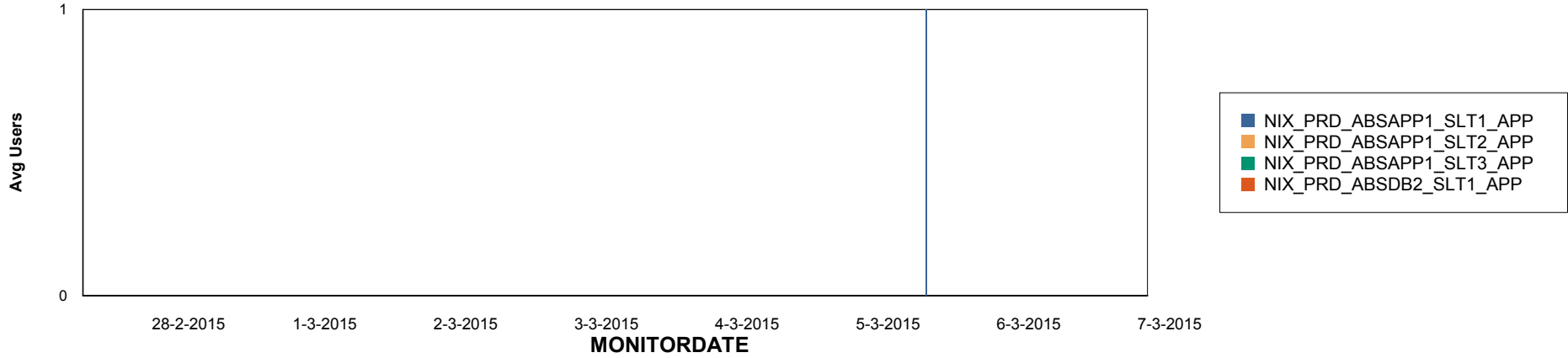
Weekly SLA Customer Report

Customer NIX_Production
Database ID 51

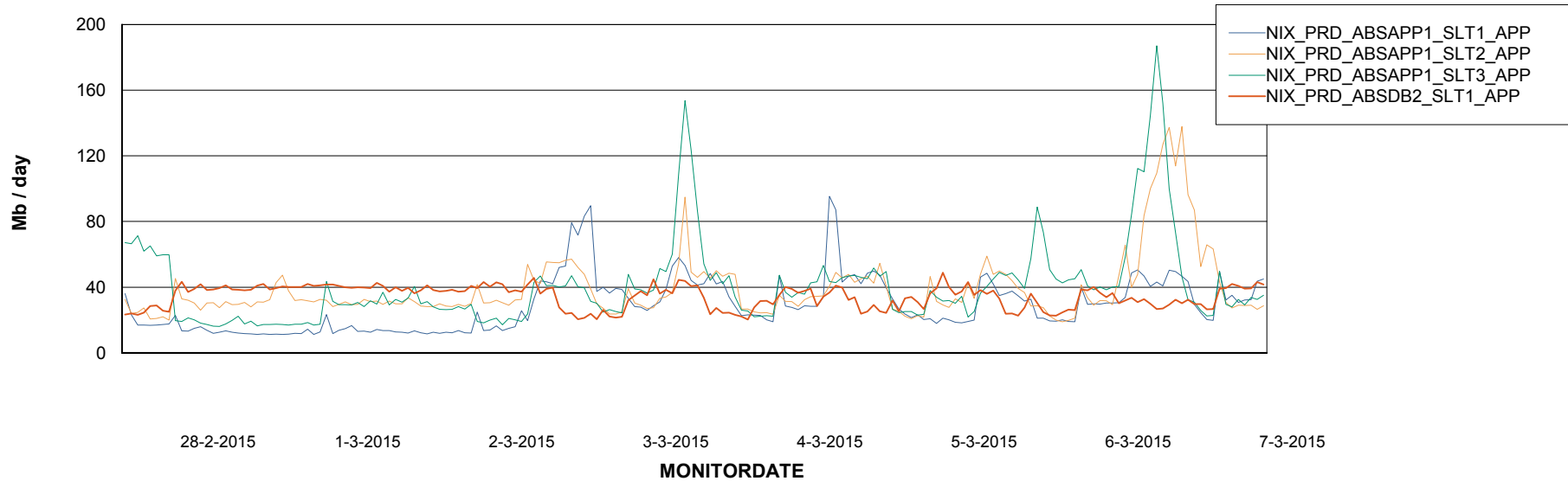


ABSolute Application Server Services

Disaster per ABS Server



Avg memory used per ABS Server Service



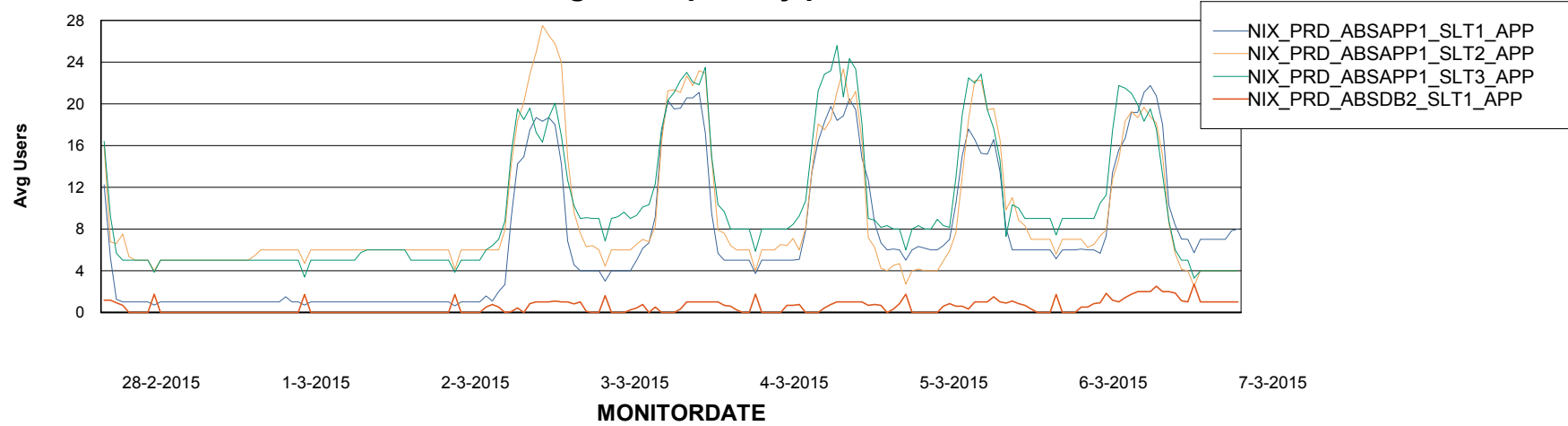
Weekly SLA Customer Report

Customer NIX_Production
Database ID 51



=====
ABSolute Application Server Services
=====

Avg users per day per ABS server



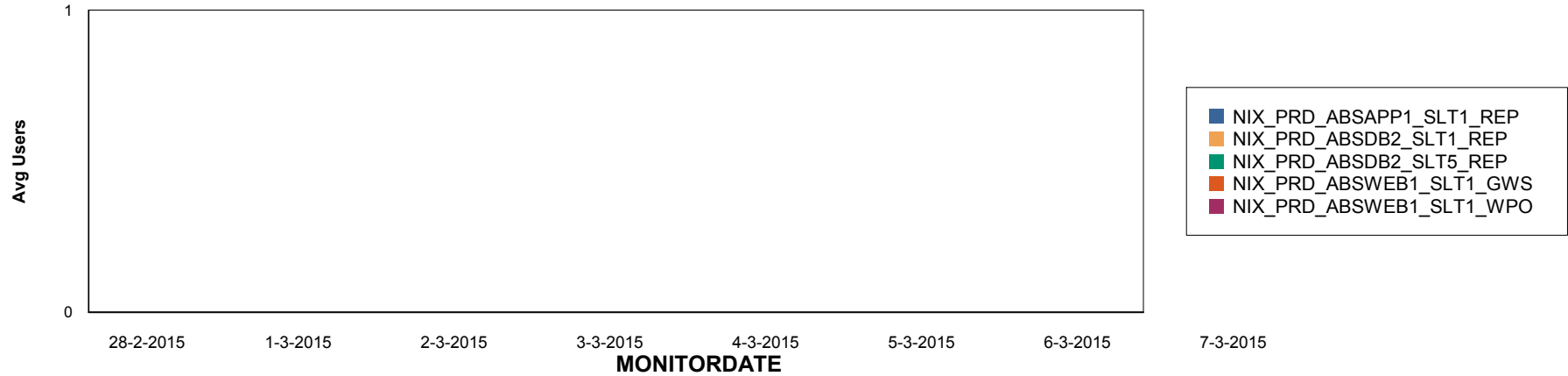
Weekly SLA Customer Report

Customer NIX_Production
Database ID 51

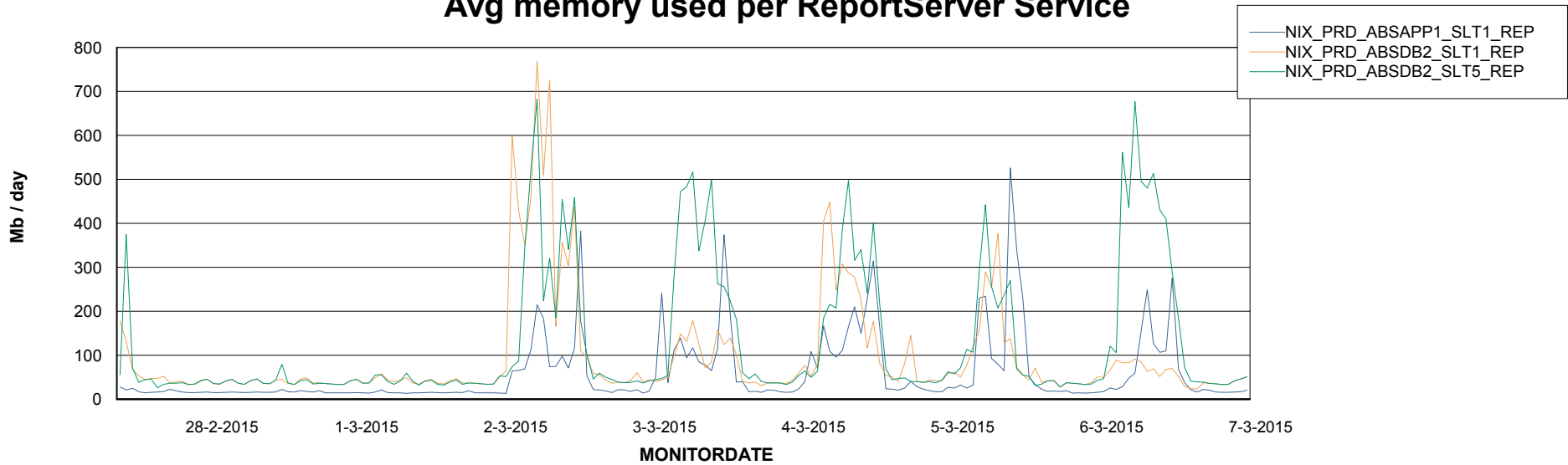


=====
ABSolute Application ReportServer Services
=====

Disaster per ReportServer



Avg memory used per ReportServer Service



Weekly SLA Customer Report

Customer NIX_Production
Database ID 51



Disaster per ABS component

