

Weekly SLA Customer Report

Customer WBL_Production
Database ID 40



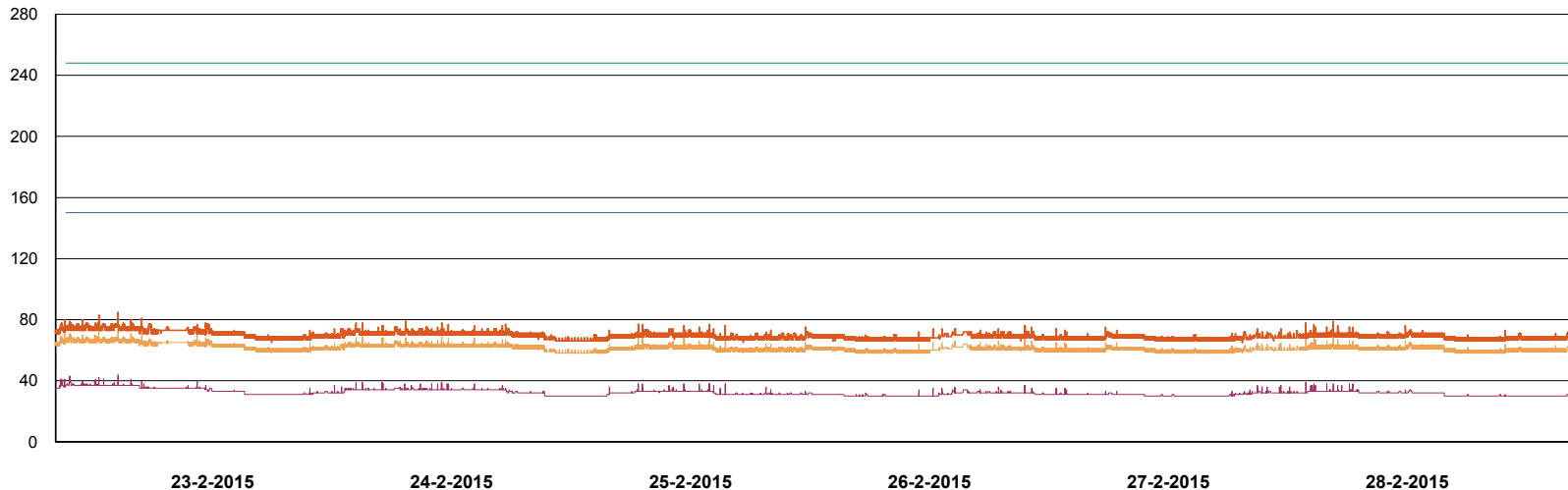
Weekly SLA Customer Report

Customer WBL_Production
Database ID 40

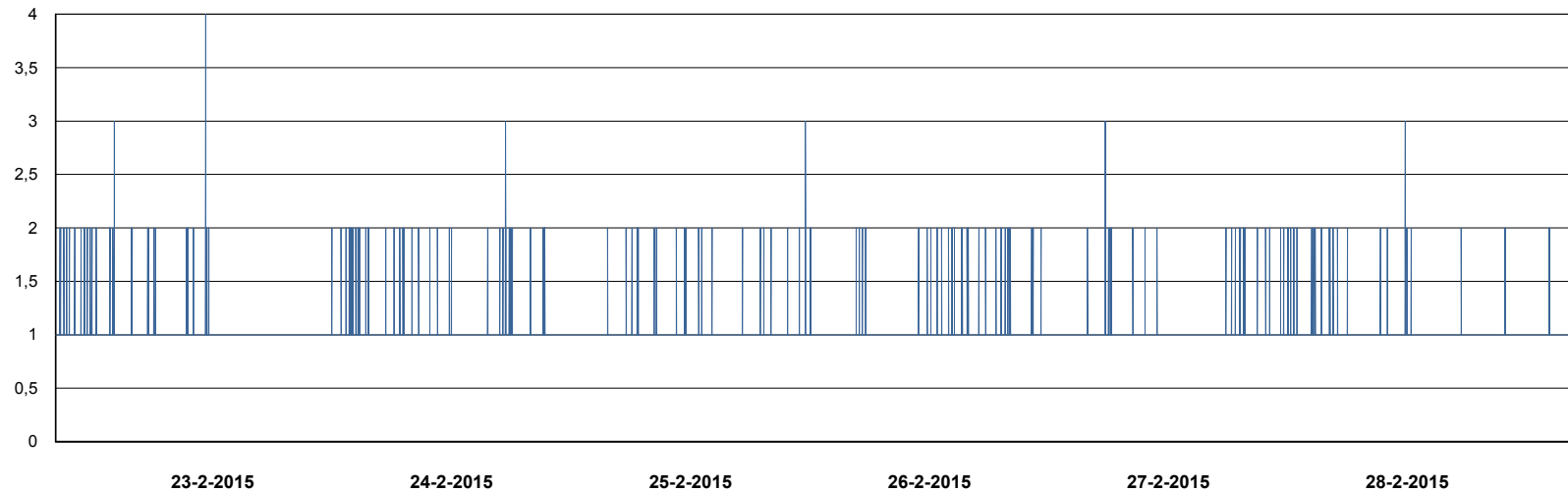


DATABASE PERFORMANCE

WBLDB_Production



- DB Processes Max
- DB Processes Used
- DB Sessions Max
- DB Sessions Used
- Users Connected



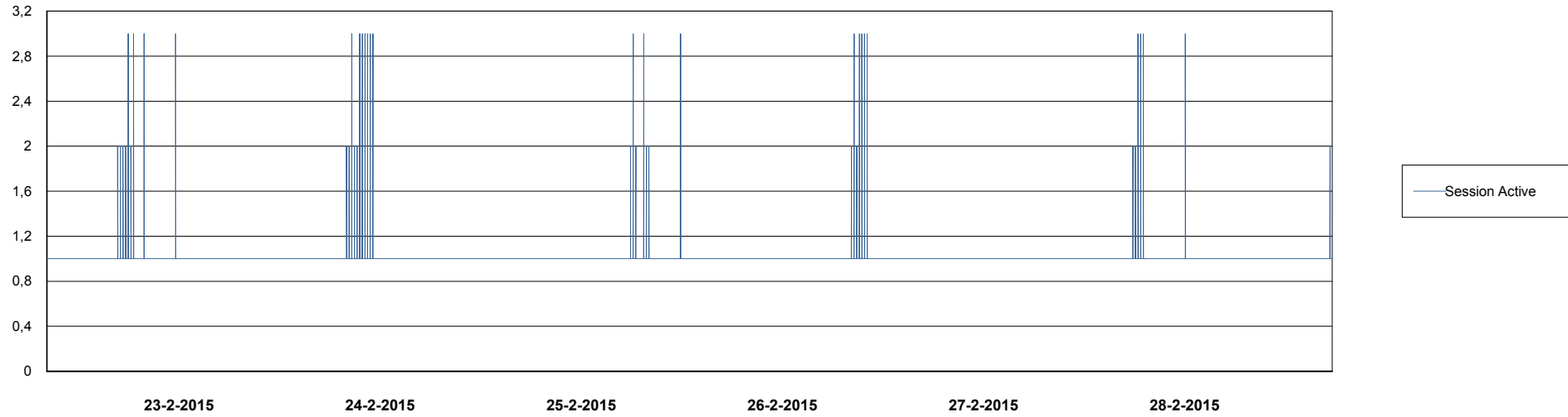
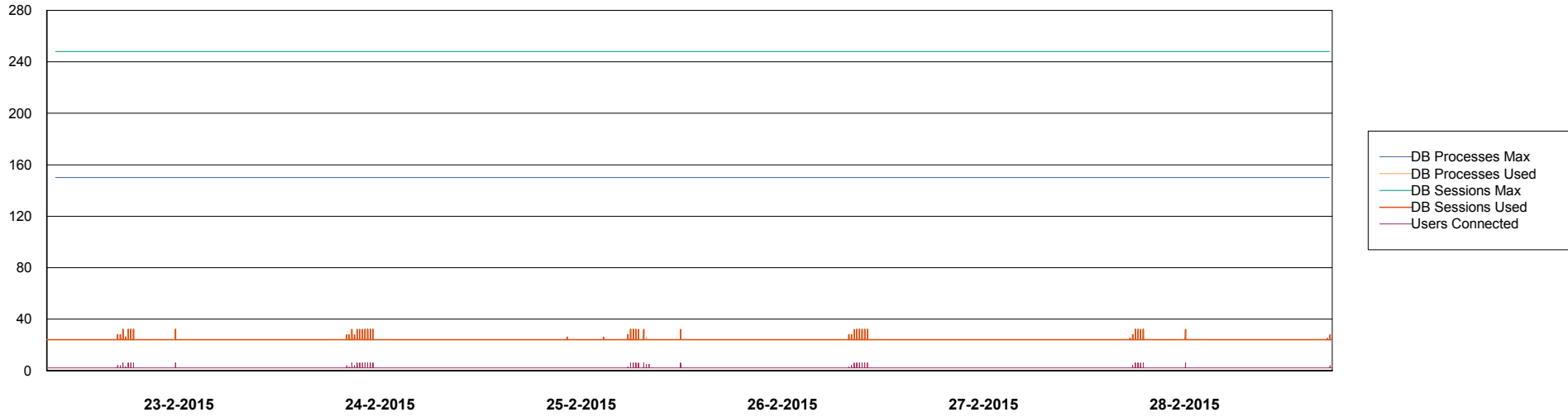
- Session Active

Weekly SLA Customer Report

Customer WBL_Production
Database ID 40



DATABASE PERFORMANCE WBLDB_Standby



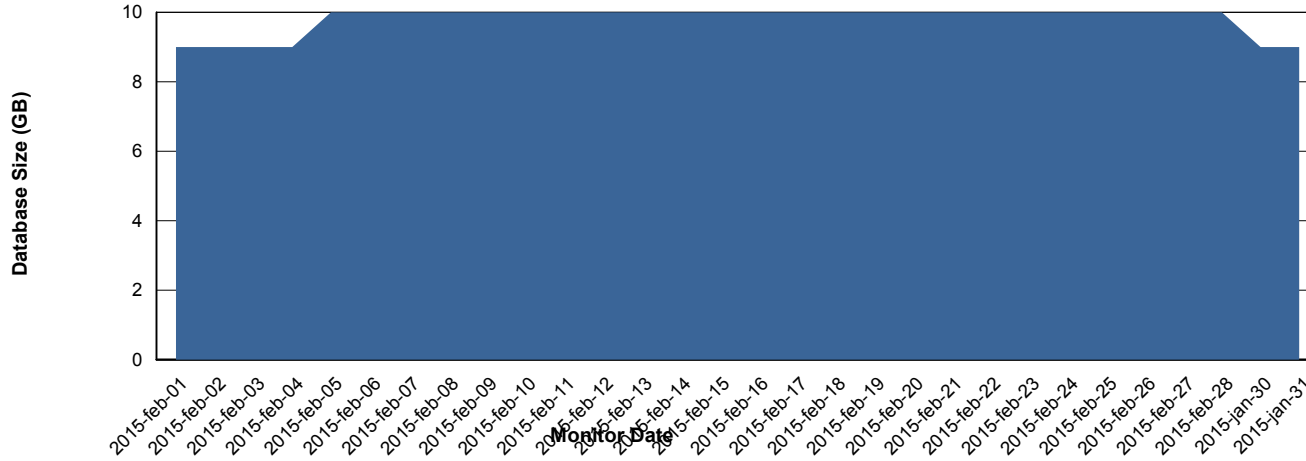
Weekly SLA Customer Report

Customer WBL_Production
 Database ID 40



=====
 DATABASE SIZE WBLDB_Production
 =====

Database growth over last month



=====
 DATABASE TABLESPACES WBLDB_Production
 =====

TOTAL DATABASE SIZE PER TABLESPACE

Date	Tablespace Name	Filesize (Gb)	Usedsize (Gb)	Percentage free
28-2-2015	ABSDATA	6	4	33
	INDX	5	4	20
27-2-2015	ABSDATA	6	4	33
	INDX	5	4	20
26-2-2015	ABSDATA	6	4	33
	INDX	5	4	20
25-2-2015	ABSDATA	6	4	33
	INDX	5	4	20
24-2-2015	ABSDATA	6	4	33
	INDX	5	4	20
23-2-2015	ABSDATA	6	4	33
	INDX	5	4	20
22-2-2015	ABSDATA	6	4	33
	INDX	5	4	20

Weekly SLA Customer Report

Customer WBL_Production
Database ID 40



=====
STANDBY DATABASE HEALTH WBL_Production
=====

Recovery lag for last 7 days

