

Weekly SLA Customer Report

Customer JWR Production
 Database ID 43



=====
 HARDDISK USAGE JWR_PRD_JWR-ABS-01
 =====

	Used disk space on / (GB)	Total disk space on / (GB)	Free disk space on / (GB)
28-2-2015	27	49	19
27-2-2015	27	49	19
26-2-2015	27	49	19
25-2-2015	27	49	19
24-2-2015	28	49	19
23-2-2015	28	49	19
22-2-2015	27	49	19

=====
 HARDDISK USAGE JWR_PRD_JWR-ABS-02
 =====

	Used disk space on / (GB)	Total disk space on / (GB)	Free disk space on / (GB)
28-2-2015	28	49	19
27-2-2015	28	49	19
26-2-2015	28	49	19
25-2-2015	28	49	19
24-2-2015	28	49	18
23-2-2015	29	49	18
22-2-2015	28	49	19

Weekly SLA Customer Report

Customer JWR Production
 Database ID 43



=====

HARDDISK USAGE JWR_PRD_JWR-ODB-01

=====

	Used disk space on / (GB)	Total disk space on / (GB)	Free disk space on / (GB)
28-2-2015	83	148	58
27-2-2015	83	148	58
26-2-2015	83	148	58
25-2-2015	83	148	58
24-2-2015	83	148	58
23-2-2015	84	148	57
22-2-2015	82	148	58

=====

HARDDISK USAGE JWR_PRD_JWR-ODB-02

=====

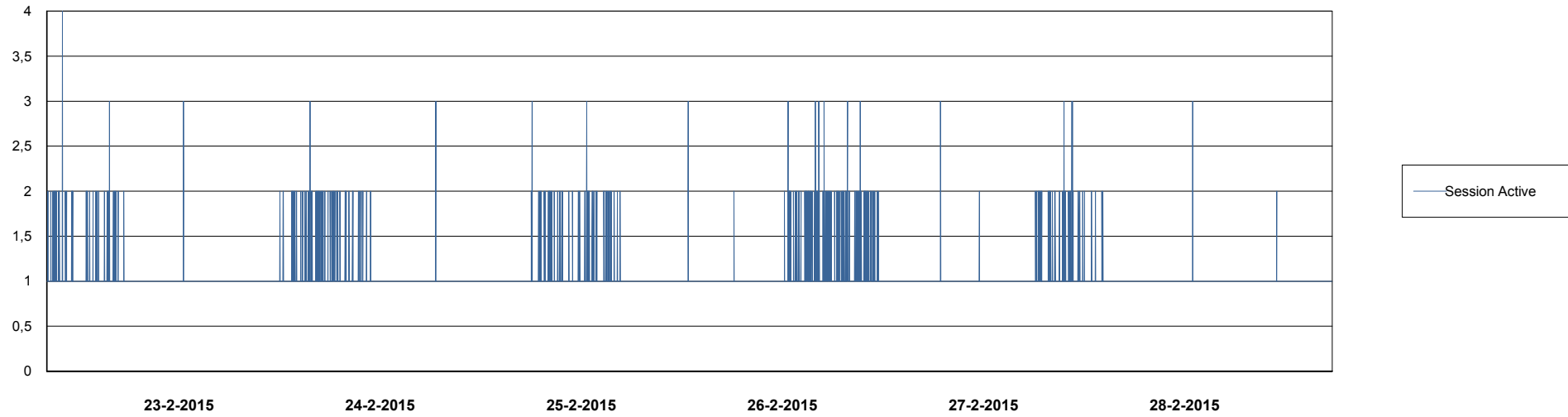
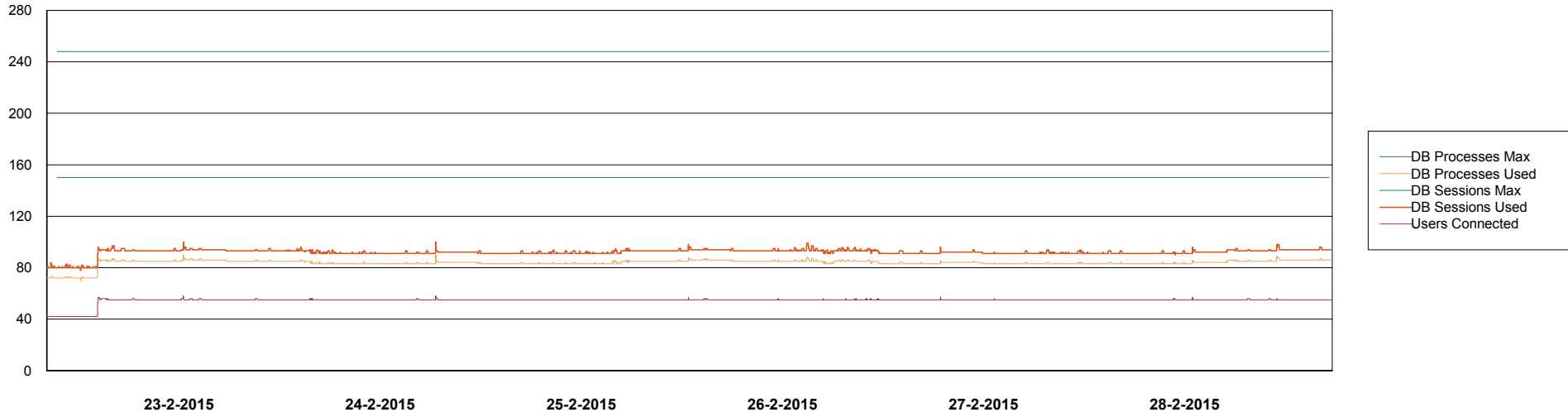
	Used disk space on / (GB)	Total disk space on / (GB)	Free disk space on / (GB)
28-2-2015	92	138	39
27-2-2015	92	138	38
26-2-2015	92	138	39
25-2-2015	92	138	39
24-2-2015	92	138	38
23-2-2015	93	138	38
22-2-2015	92	138	39

Weekly SLA Customer Report

Customer JWR Production
Database ID 43



DATABASE PERFORMANCE JWRDB_Production



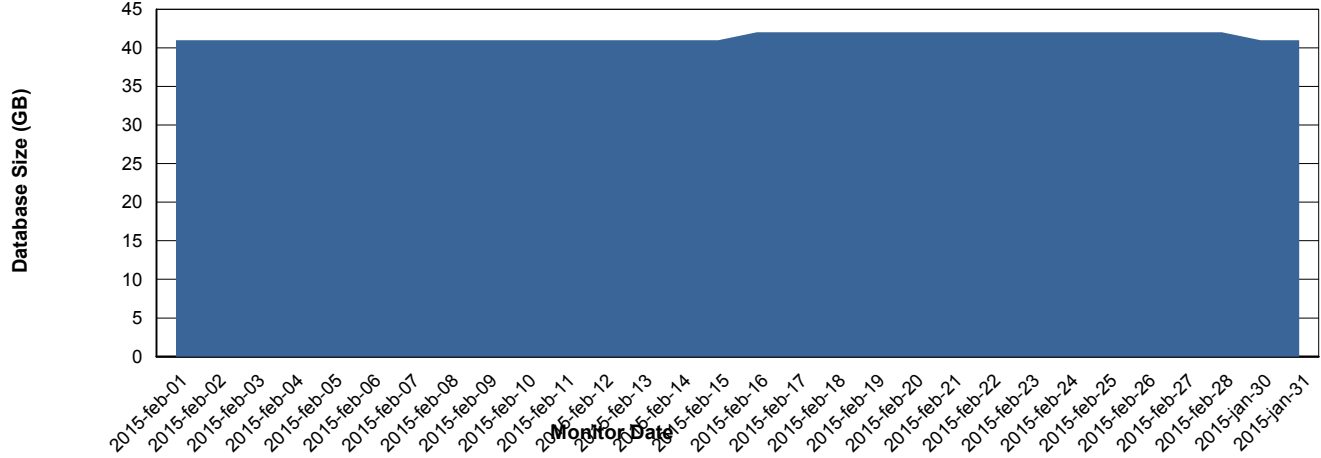
Weekly SLA Customer Report

Customer JWR Production
 Database ID 43



=====
 DATABASE SIZE JWRDB_Production
 =====

Database growth over last month



=====
 DATABASE TABLESPACES JWRDB_Production
 =====

TOTAL DATABASE SIZE PER TABLESPACE

Date	Tablespace Name	Filesize (Gb)	Usedsize (Gb)	Percentage free
28-2-2015	ABSDATA	18	12	33
	INDX	38	29	24
27-2-2015	ABSDATA	18	12	33
	INDX	38	29	24
26-2-2015	ABSDATA	18	12	33
	INDX	38	29	24
25-2-2015	ABSDATA	18	12	33
	INDX	38	29	24
24-2-2015	ABSDATA	18	12	33
	INDX	38	29	24
23-2-2015	ABSDATA	18	12	33
	INDX	38	29	24
22-2-2015	ABSDATA	18	12	33
	INDX	38	29	24

Weekly SLA Customer Report

Customer JWR Production
Database ID 43



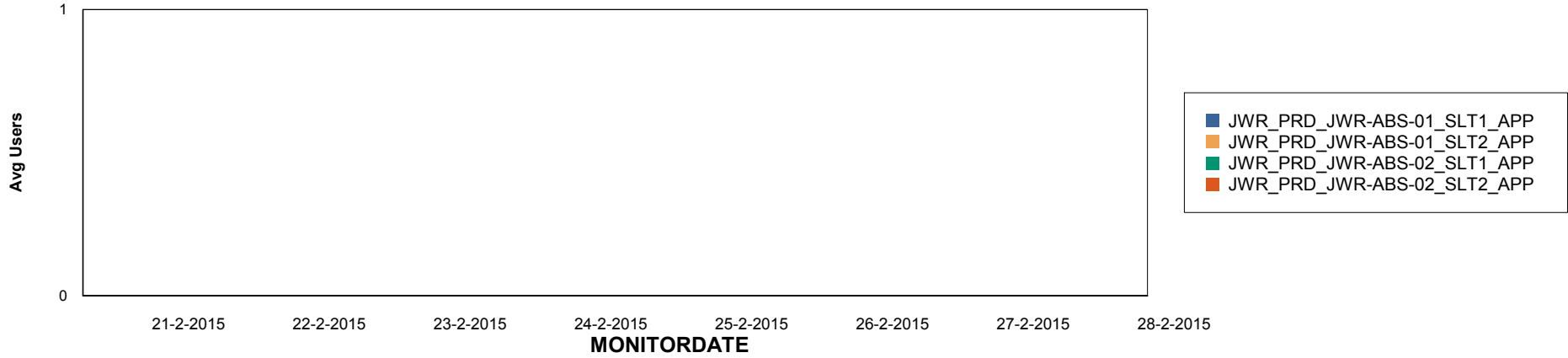
Weekly SLA Customer Report

Customer JWR Production
Database ID 43

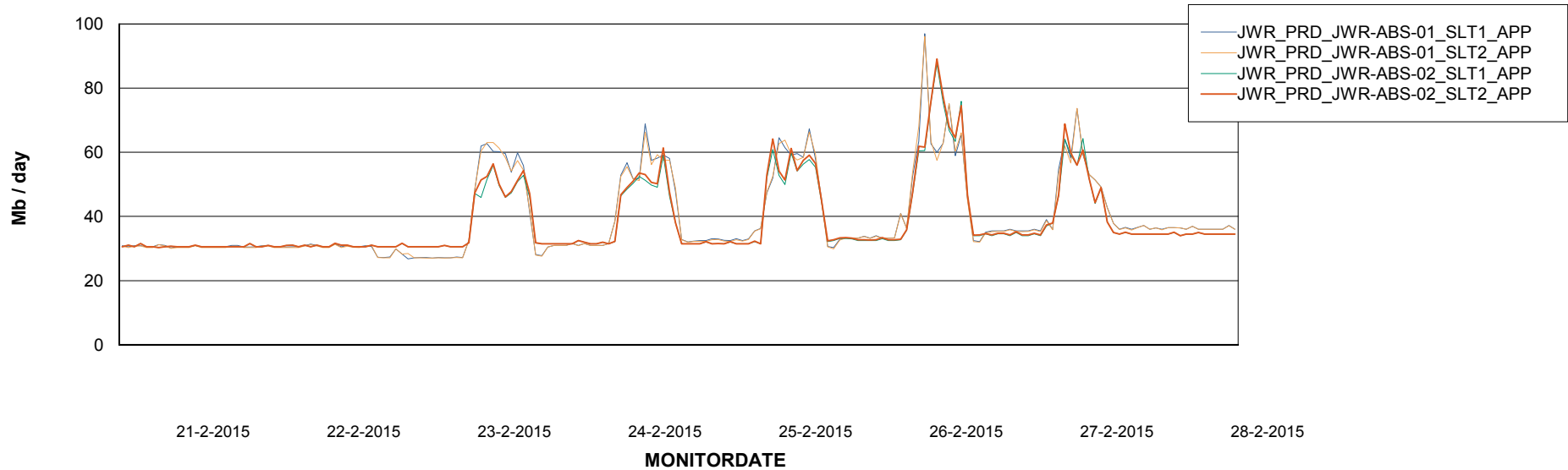


=====
ABSolute Application Server Services
=====

Disaster per ABS Server



Avg memory used per ABS Server Service



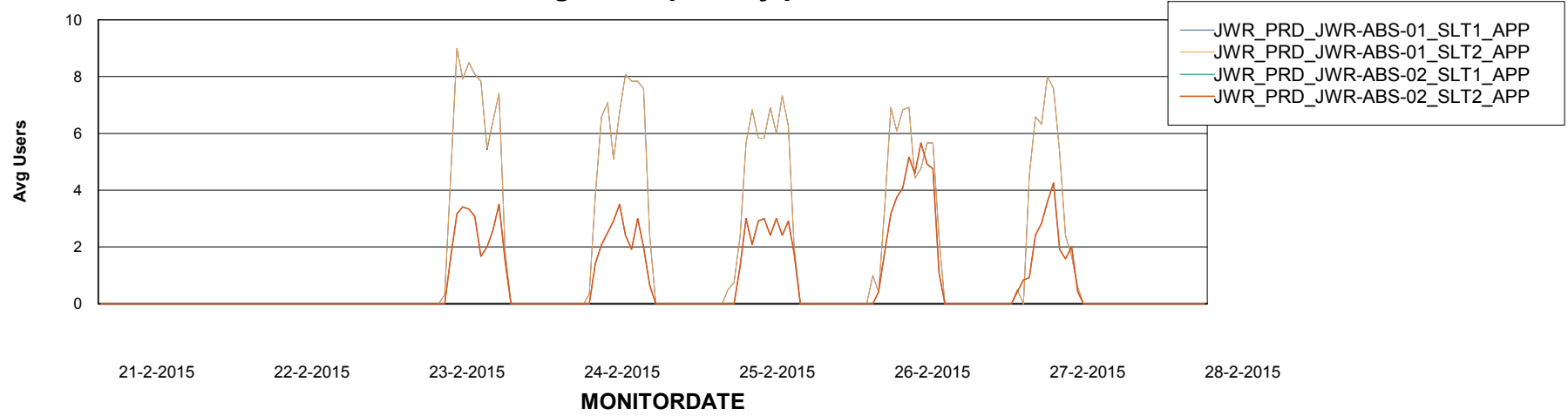
Weekly SLA Customer Report

Customer JWR Production
Database ID 43



=====
ABSolute Application Server Services
=====

Avg users per day per ABS server



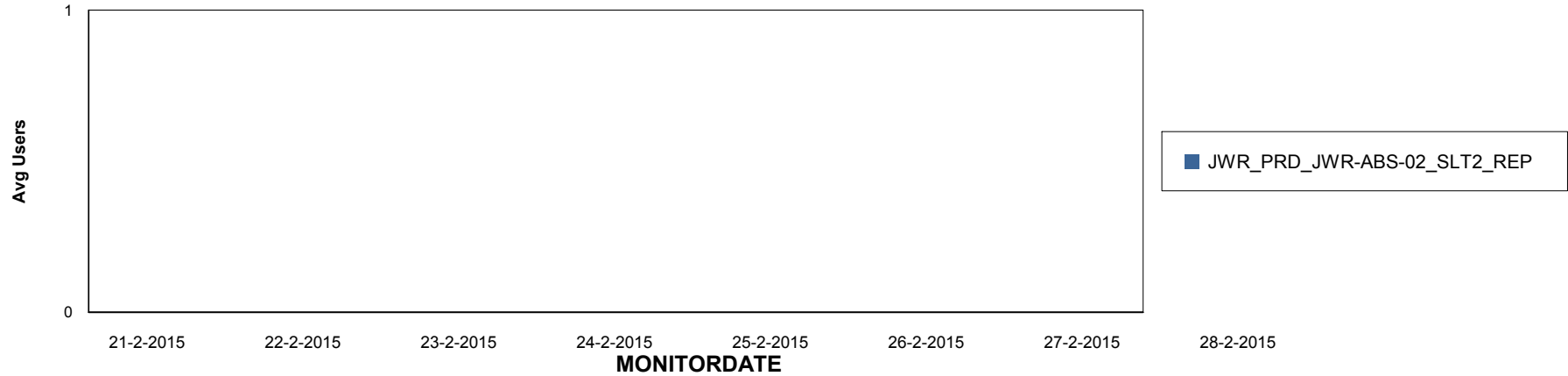
Weekly SLA Customer Report

Customer JWR Production
Database ID 43

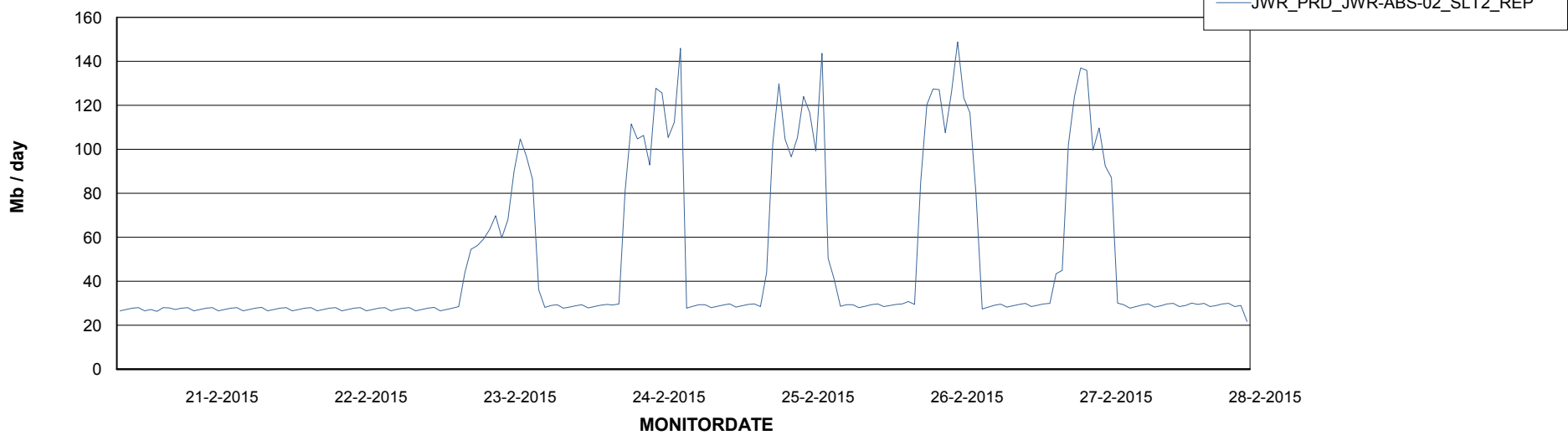


=====
ABSolute Application ReportServer Services
=====

Disaster per ReportServer



Avg memory used per ReportServer Service



Weekly SLA Customer Report

Customer JWR Production
Database ID 43



Disaster per ABS component

