

Weekly SLA Customer Report

Customer NIX_Production
 Database ID 51



=====
 HARDDISK USAGE NIX_PRD_ABSAPP1
 =====

	Total disk space on C (GB)	Free disk space on C (GB)
21-2-2015	136	89
20-2-2015	136	89
19-2-2015	136	89
18-2-2015	136	89
17-2-2015	136	89
16-2-2015	136	89
15-2-2015	136	89

=====
 HARDDISK USAGE NIX_PRD_ABSWEB1
 =====

	Total disk space on C (GB)	Free disk space on C (GB)	Total disk space on D (GB)
21-2-2015	930	742	3
20-2-2015	930	742	3
19-2-2015	930	742	3
18-2-2015	930	742	3
17-2-2015	930	743	3
16-2-2015	930	743	3
15-2-2015	930	743	3

Weekly SLA Customer Report

Customer NIX_Production
 Database ID 51



=====
 HARDDISK USAGE NIX_PRD_ORACLE_B11
 =====

	Total disk space on C (GB)	Free disk space on C (GB)	Total disk space on D (GB)	Free disk space on D (GB)	Total disk space on E (GB)	Free disk space on E (GB)
21-2-2015	99	52	279	169	99	28
20-2-2015	99	52	279	169	99	28
19-2-2015	99	52	279	169	99	28
18-2-2015	99	52	279	169	99	28
17-2-2015	99	52	279	169	99	28
16-2-2015	99	52	279	169	99	28
15-2-2015	99	52	279	169	99	28

=====
 HARDDISK USAGE NIX_PRD_ORCDB1
 =====

	Total disk space on C (GB)	Free disk space on C (GB)	Total disk space on D (GB)	Free disk space on D (GB)	Total disk space on E (GB)	Free disk space on E (GB)
21-2-2015	136	67	136	27	136	49
20-2-2015	136	67	136	27	136	51
19-2-2015	136	67	136	27	136	51
18-2-2015	136	67	136	27	136	51
17-2-2015	136	67	136	27	136	50
16-2-2015	136	67	136	27	136	50
15-2-2015	136	67	136	27	136	50

Weekly SLA Customer Report

Customer NIX_Production
 Database ID 51



=====
 HARDDISK USAGE NIX_PRD_ORCDB2
 =====

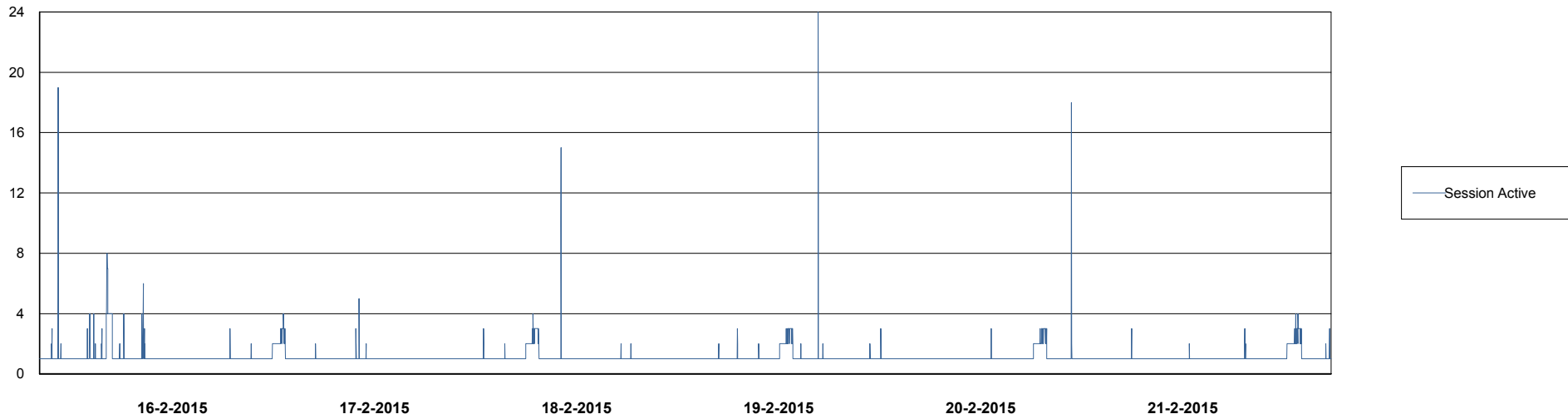
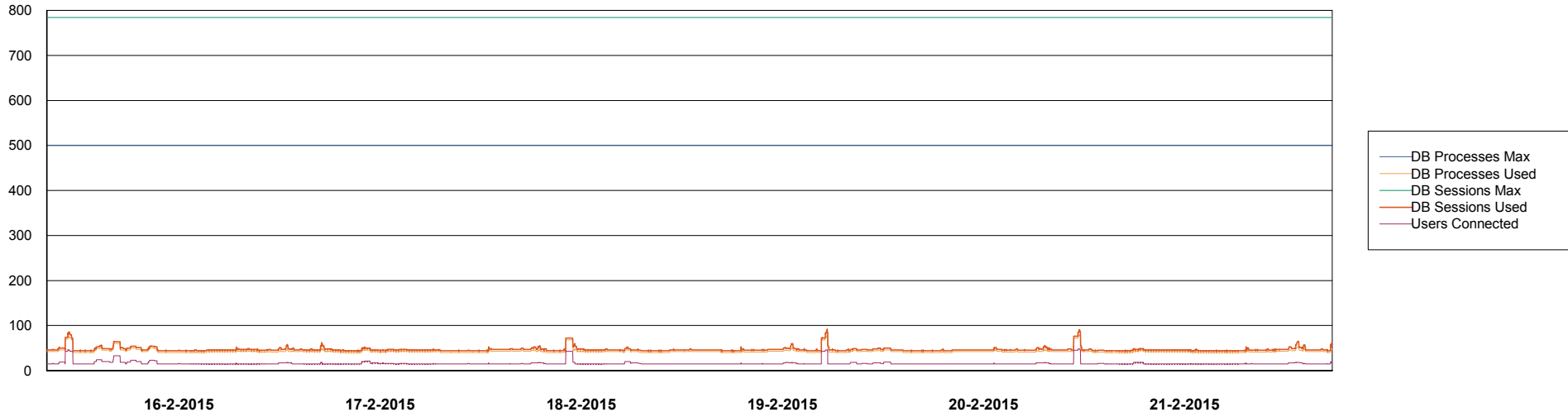
	Total disk space on C (GB)	Free disk space on C (GB)	Total disk space on D (GB)	Free disk space on D (GB)	Total disk space on E (GB)	Free disk space on E (GB)
21-2-2015	279	65	279	43	279	101
20-2-2015	279	65	279	49	279	116
19-2-2015	279	65	279	51	279	145
18-2-2015	279	65	279	51	279	142
17-2-2015	279	65	279	51	279	144
16-2-2015	279	65	279	51	279	139
15-2-2015	279	65	279	51	279	90

Weekly SLA Customer Report

Customer NIX_Production
Database ID 51



DATABASE PERFORMANCE NIXDB_BI

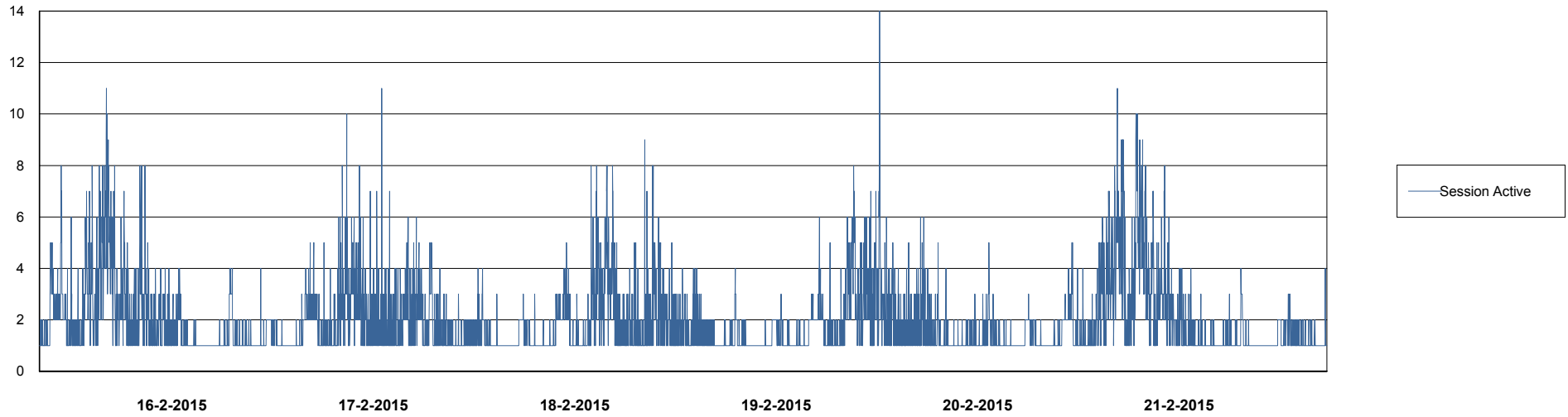
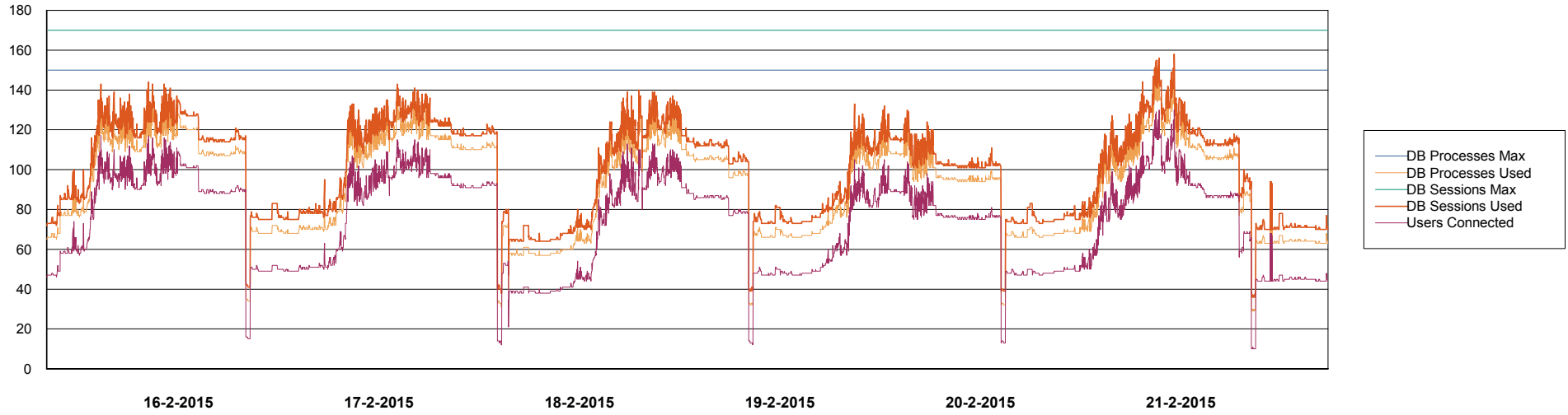


Weekly SLA Customer Report

Customer NIX_Production
Database ID 51



DATABASE PERFORMANCE NIXDB_Production



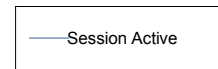
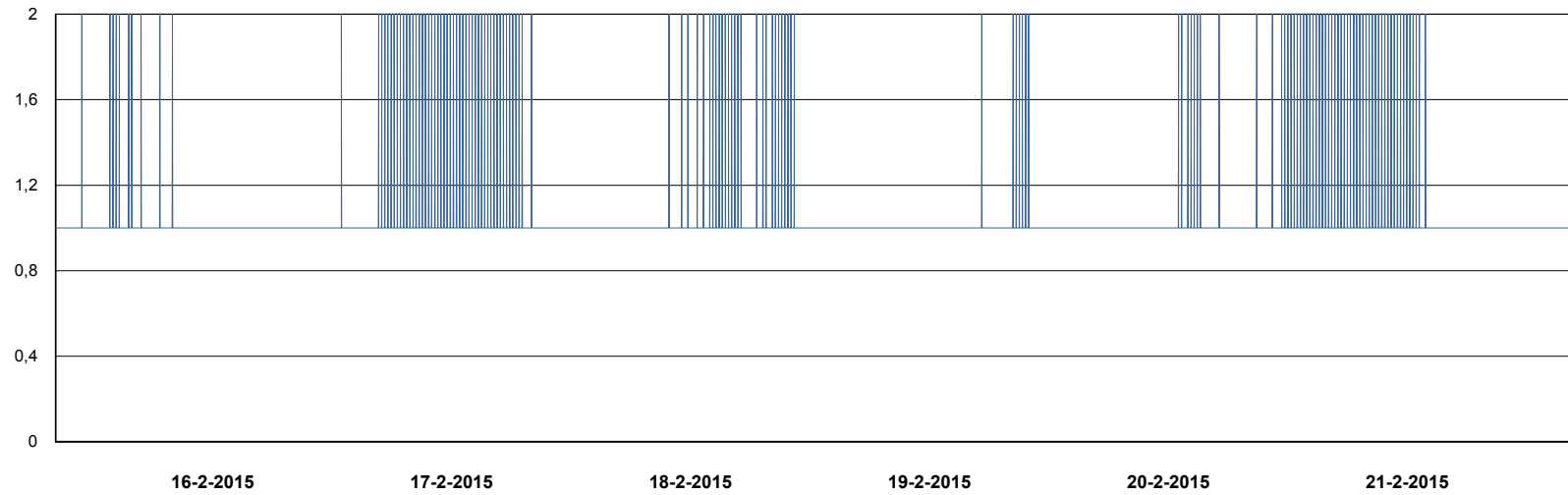
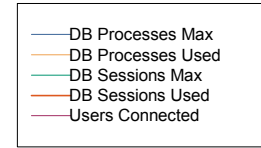
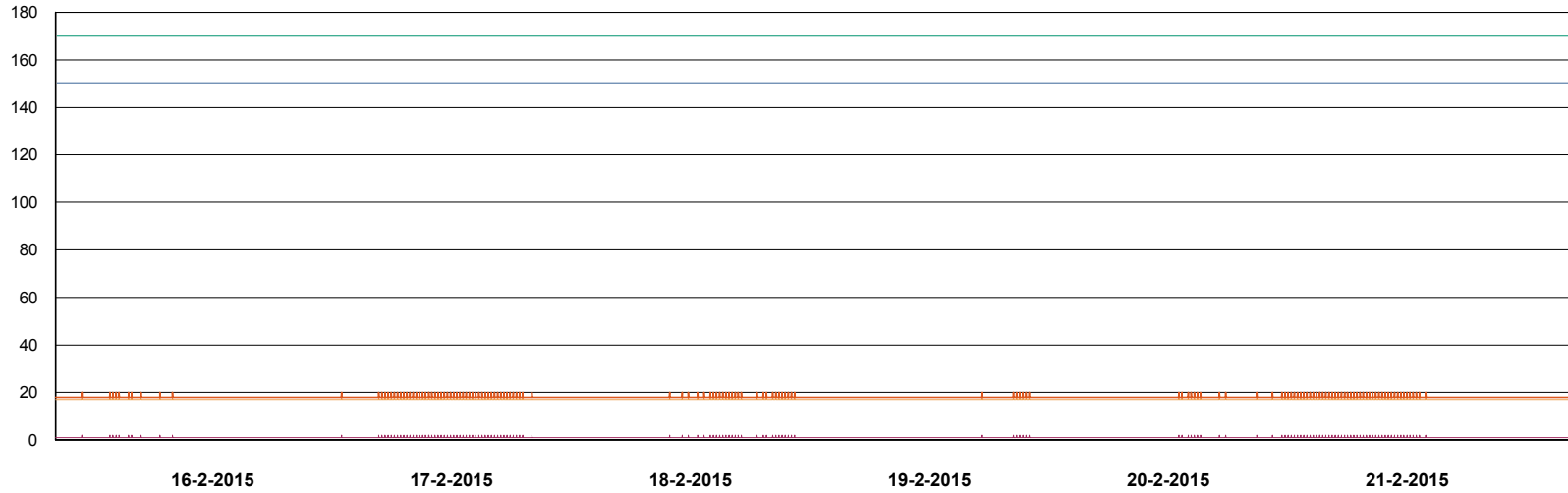
Weekly SLA Customer Report

Customer NIX_Production
Database ID 51



DATABASE PERFORMANCE

NIXDB_Standby



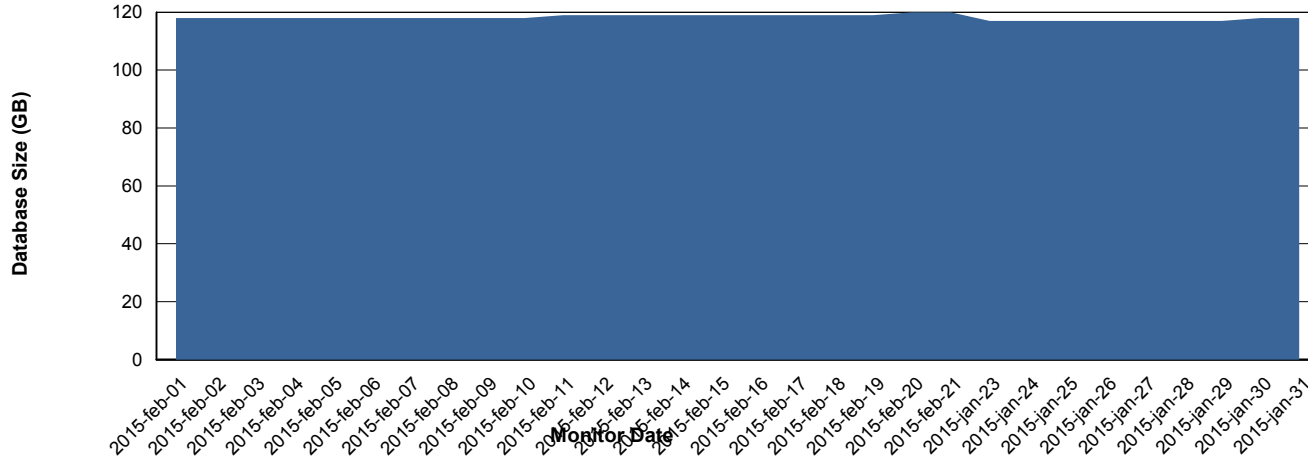
Weekly SLA Customer Report

Customer NIX_Production
Database ID 51



=====
DATABASE SIZE NIXDB_Production
=====
=====

Database growth over last month



Weekly SLA Customer Report

Customer NIX_Production
 Database ID 51



=====
 DATABASE TABLESPACES NIXDB_BI
 =====
 TOTAL DATABASE SIZE PER TABLESPACE

Date	Tablespace Name	Filesize (Gb)	Usedsize (Gb)	Percentage free
21-2-2015	ABSDATA	28	19	32
	INDX	44	31	30
20-2-2015	ABSDATA	28	19	32
	INDX	44	31	30
19-2-2015	ABSDATA	28	19	32
	INDX	44	31	30
18-2-2015	ABSDATA	28	19	32
	INDX	44	31	30
17-2-2015	ABSDATA	28	19	32
	INDX	44	31	30
16-2-2015	ABSDATA	28	19	32
	INDX	44	31	30
15-2-2015	ABSDATA	28	19	32
	INDX	44	31	30

Weekly SLA Customer Report

Customer NIX_Production
 Database ID 51



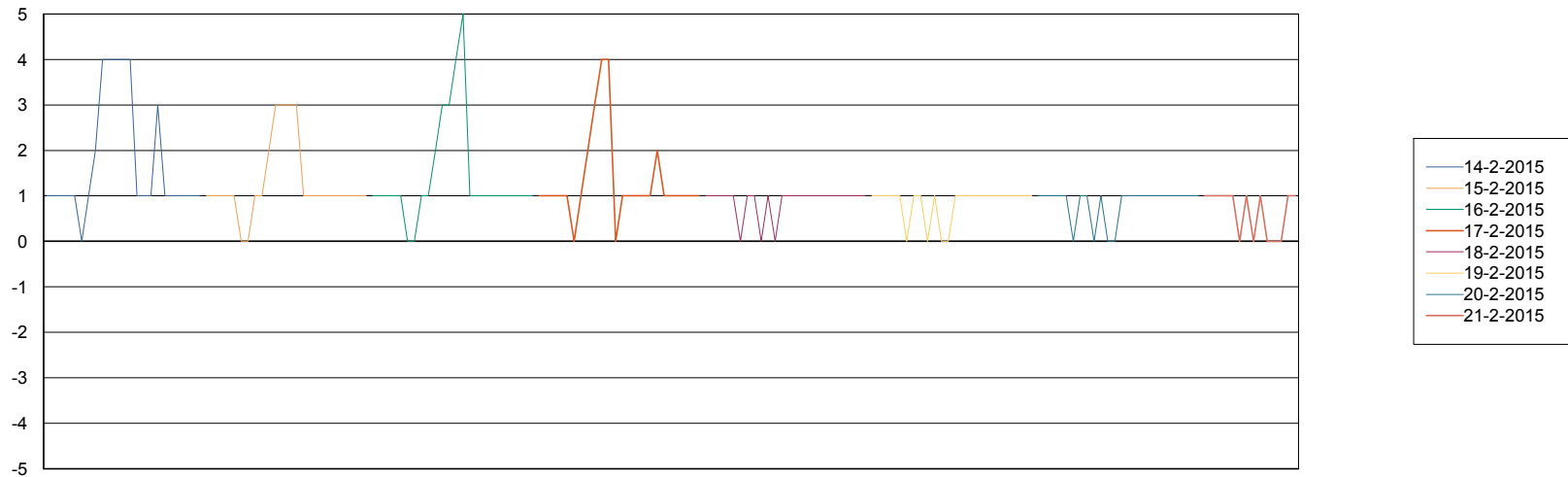
=====
 DATABASE TABLESPACES NIXDB_Production
 =====

TOTAL DATABASE SIZE PER TABLESPACE

Date	Tablespace Name	Filesize (Gb)	Usedsize (Gb)	Percentage free
21-2-2015	ABSDATA	40	31	23
	INDX	109	86	21
20-2-2015	ABSDATA	40	31	23
	INDX	109	86	21
19-2-2015	ABSDATA	40	31	23
	INDX	109	86	21
18-2-2015	ABSDATA	40	31	23
	INDX	109	86	21
17-2-2015	ABSDATA	40	31	23
	INDX	109	86	21
16-2-2015	ABSDATA	40	31	23
	INDX	109	86	21
15-2-2015	ABSDATA	40	31	23
	INDX	109	85	22

=====
 STANDBY DATABASE HEALTH NIX_Production
 =====

Recovery lag for last 7 days



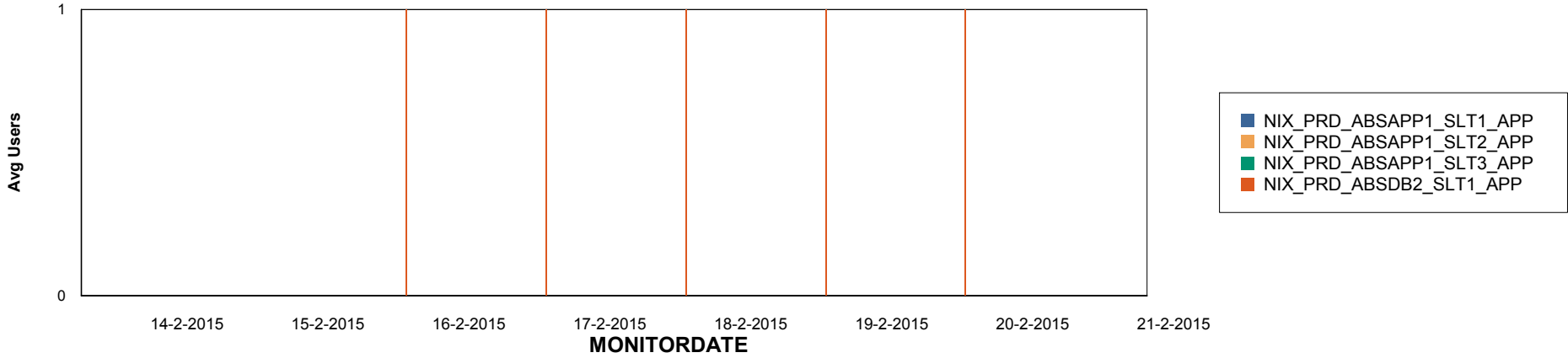
Weekly SLA Customer Report

Customer NIX_Production
Database ID 51

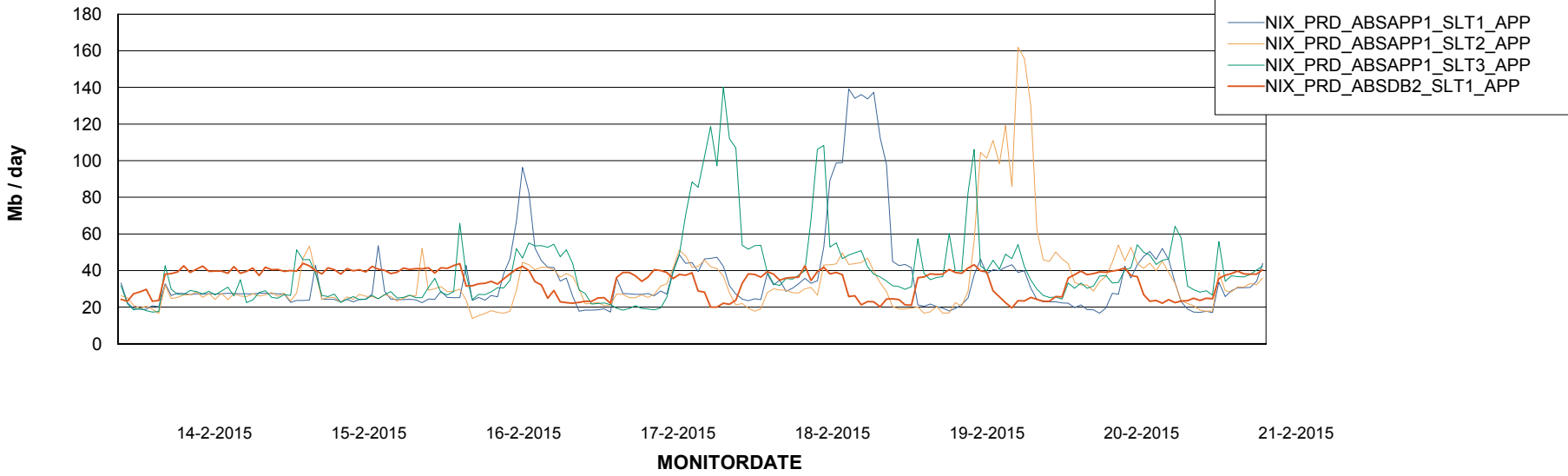


=====
ABSolute Application Server Services
=====

Disaster per ABS Server



Avg memory used per ABS Server Service



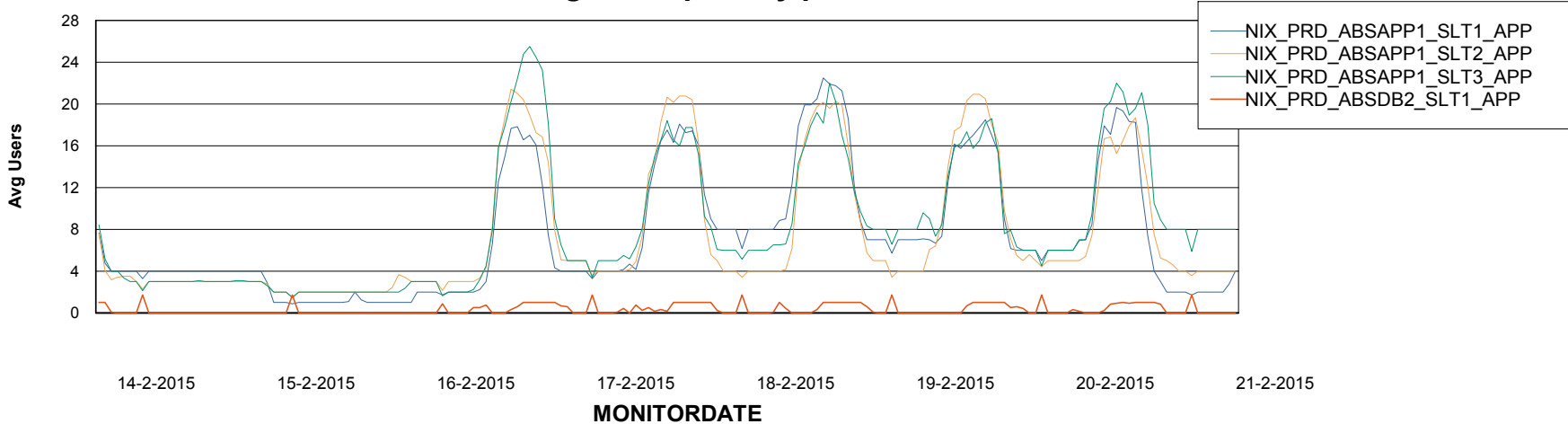
Weekly SLA Customer Report

Customer NIX_Production
Database ID 51



=====
ABSolute Application Server Services
=====

Avg users per day per ABS server



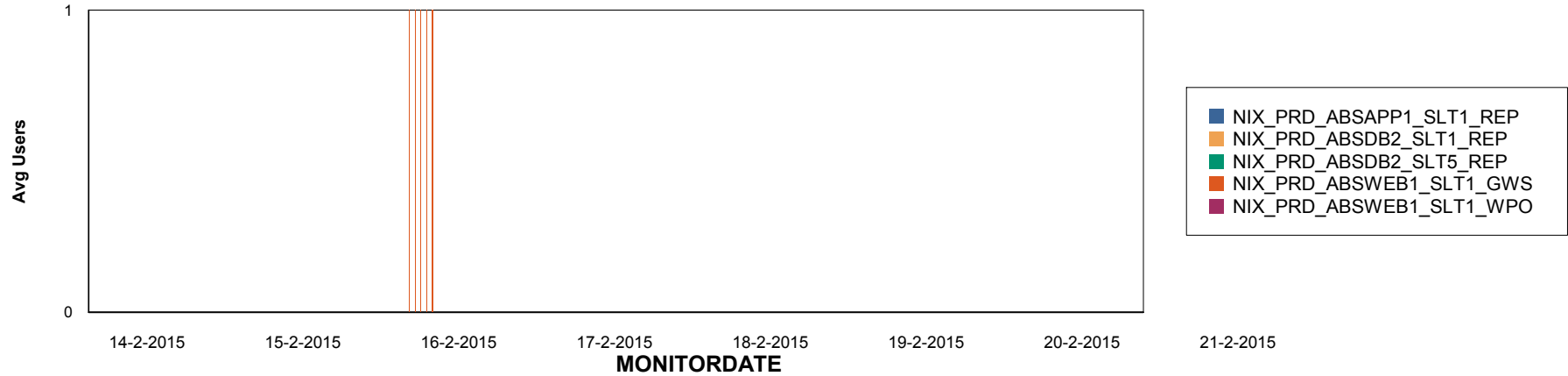
Weekly SLA Customer Report

Customer NIX_Production
Database ID 51

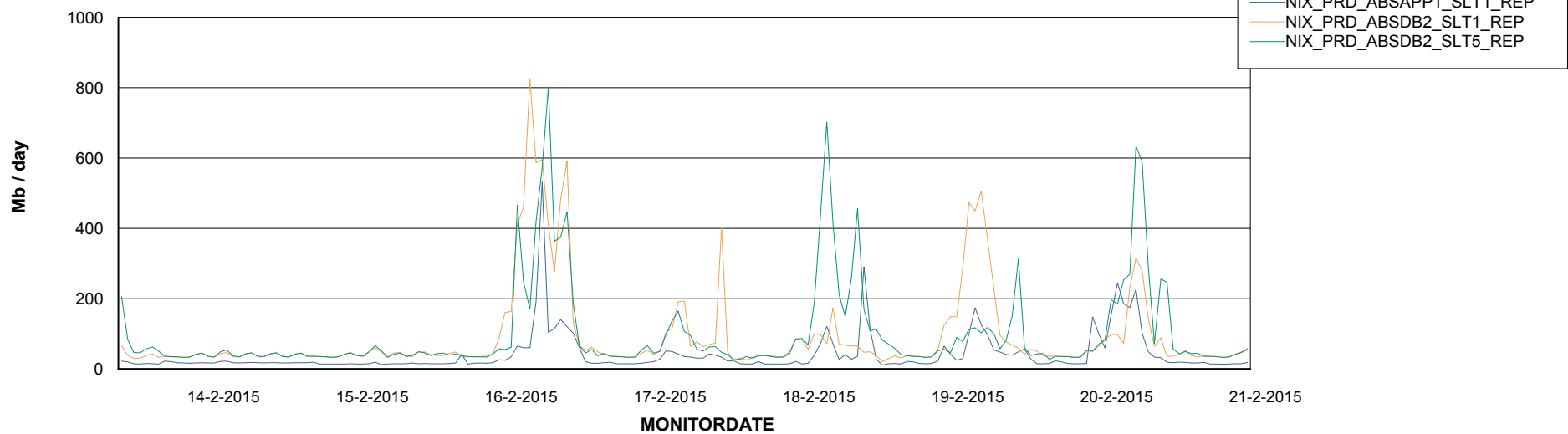


ABSSolute Application ReportServer Services

Disaster per ReportServer



Avg memory used per ReportServer Service



Weekly SLA Customer Report

Customer NIX_Production
Database ID 51



Disaster per ABS component

