

## Weekly SLA Customer Report

Customer      JWR Production  
 Database ID    43



=====  
 HARDDISK USAGE    JWR\_PRD\_JWR-ABS-01  
 =====

	Used disk space on / (GB)	Total disk space on / (GB)	Free disk space on / (GB)
21-2-2015	27	49	19
20-2-2015	27	49	19
19-2-2015	27	49	19
18-2-2015	27	49	19
17-2-2015	27	49	19
16-2-2015	27	49	19
15-2-2015	27	49	19

=====  
 HARDDISK USAGE    JWR\_PRD\_JWR-ABS-02  
 =====

	Used disk space on / (GB)	Total disk space on / (GB)	Free disk space on / (GB)
21-2-2015	28	49	19
20-2-2015	28	49	19
19-2-2015	28	49	19
18-2-2015	28	49	19
17-2-2015	28	49	19
16-2-2015	28	49	19
15-2-2015	28	49	19

## Weekly SLA Customer Report

Customer      JWR Production  
 Database ID    43



=====

HARDDISK USAGE    JWR\_PRD\_JWR-ODB-01

=====

	Used disk space on / (GB)	Total disk space on / (GB)	Free disk space on / (GB)
21-2-2015	83	148	58
20-2-2015	83	148	58
19-2-2015	83	148	58
18-2-2015	83	148	58
17-2-2015	83	148	58
16-2-2015	83	148	57
15-2-2015	83	148	58

=====

HARDDISK USAGE    JWR\_PRD\_JWR-ODB-02

=====

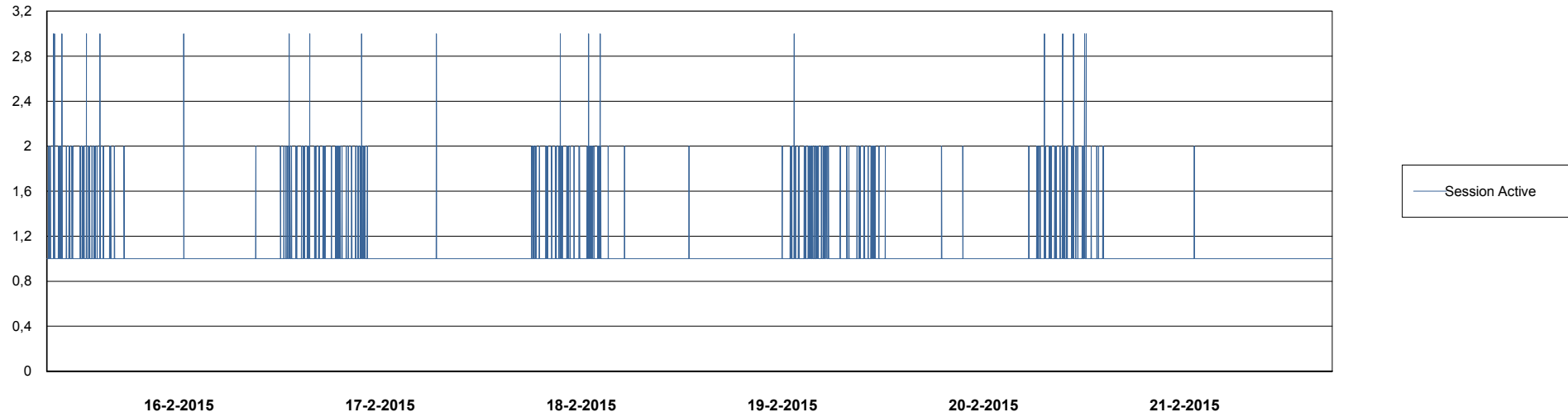
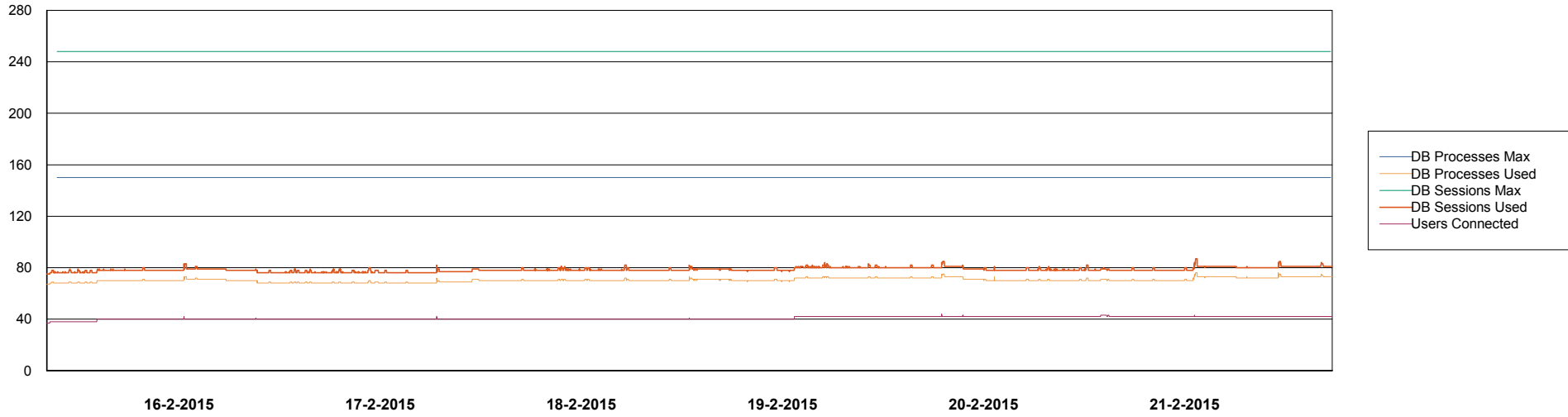
	Used disk space on / (GB)	Total disk space on / (GB)	Free disk space on / (GB)
21-2-2015	92	138	39
20-2-2015	92	138	39
19-2-2015	92	138	39
18-2-2015	92	138	39
17-2-2015	92	138	38
16-2-2015	93	138	38
15-2-2015	92	138	39

# Weekly SLA Customer Report

Customer JWR Production  
Database ID 43



DATABASE PERFORMANCE JWRDB\_Production



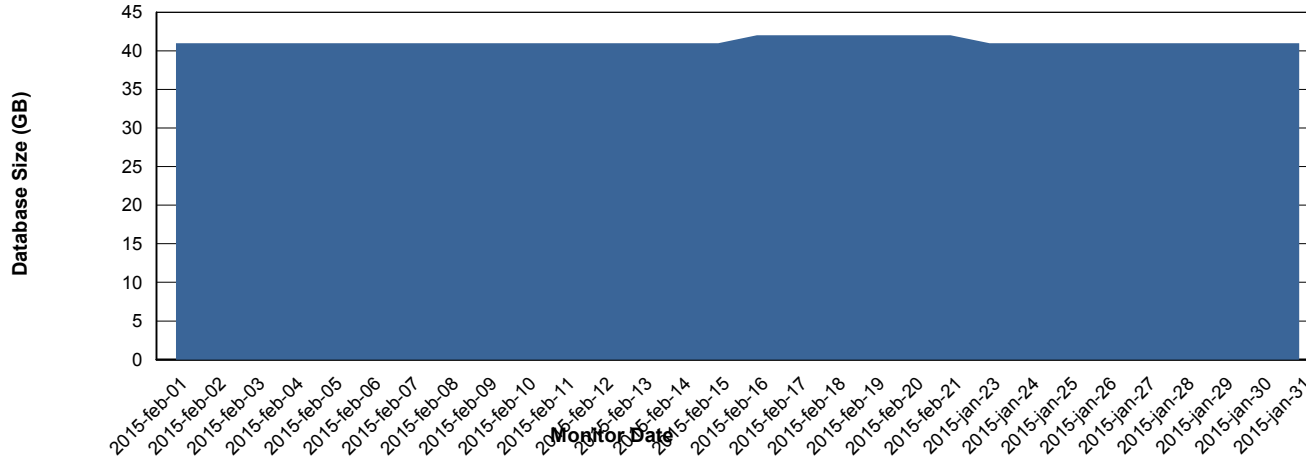
# Weekly SLA Customer Report

Customer JWR Production  
 Database ID 43



=====  
 DATABASE SIZE JWRDB\_Production  
 =====

## Database growth over last month



=====  
 DATABASE TABLESPACES JWRDB\_Production  
 =====

### TOTAL DATABASE SIZE PER TABLESPACE

Date	Tablespace Name	Filesize (Gb)	Usedsize (Gb)	Percentage free
21-2-2015	ABSDATA	18	12	33
	INDX	38	29	24
20-2-2015	ABSDATA	18	12	33
	INDX	38	29	24
19-2-2015	ABSDATA	18	12	33
	INDX	38	29	24
18-2-2015	ABSDATA	18	12	33
	INDX	38	29	24
17-2-2015	ABSDATA	18	12	33
	INDX	38	29	24
16-2-2015	ABSDATA	18	12	33
	INDX	38	29	24
15-2-2015	ABSDATA	18	12	33
	INDX	38	29	24

## Weekly SLA Customer Report

---

Customer     JWR Production  
Database ID   43



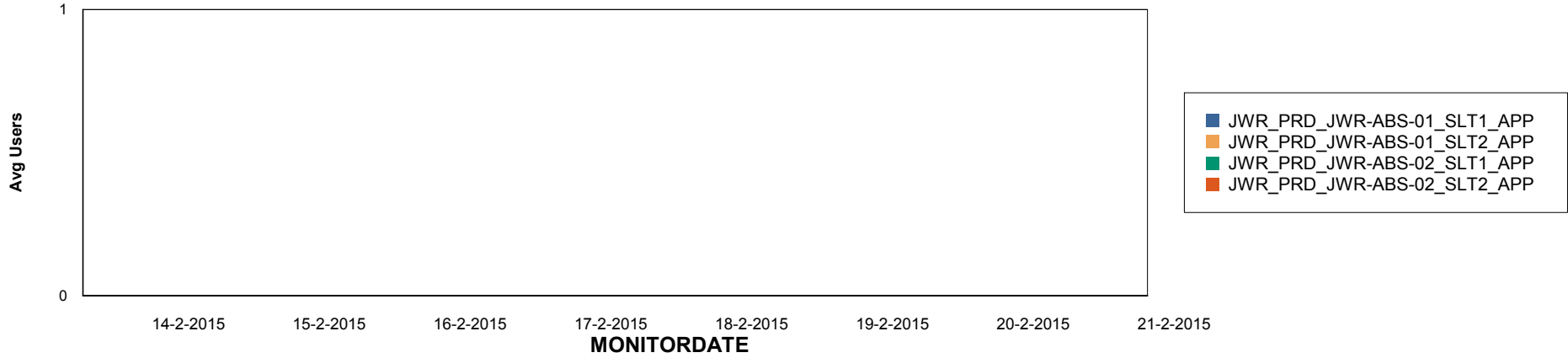
# Weekly SLA Customer Report

Customer JWR Production  
Database ID 43

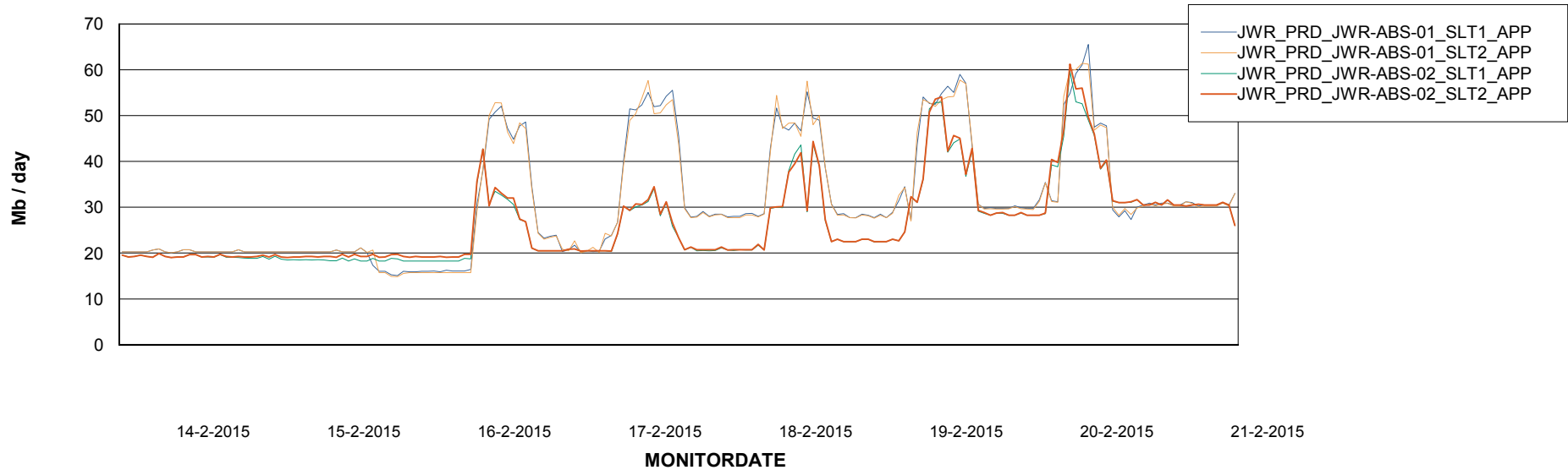


=====  
ABSolute Application Server Services  
=====

## Disaster per ABS Server



## Avg memory used per ABS Server Service



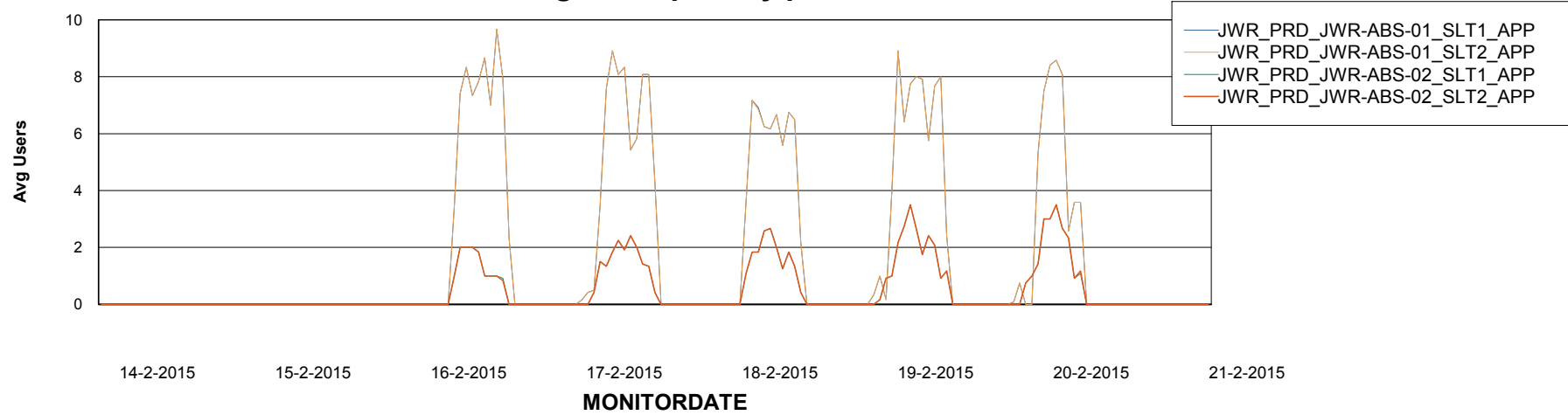
# Weekly SLA Customer Report

Customer JWR Production  
Database ID 43



=====  
ABSolute Application Server Services  
=====

### Avg users per day per ABS server



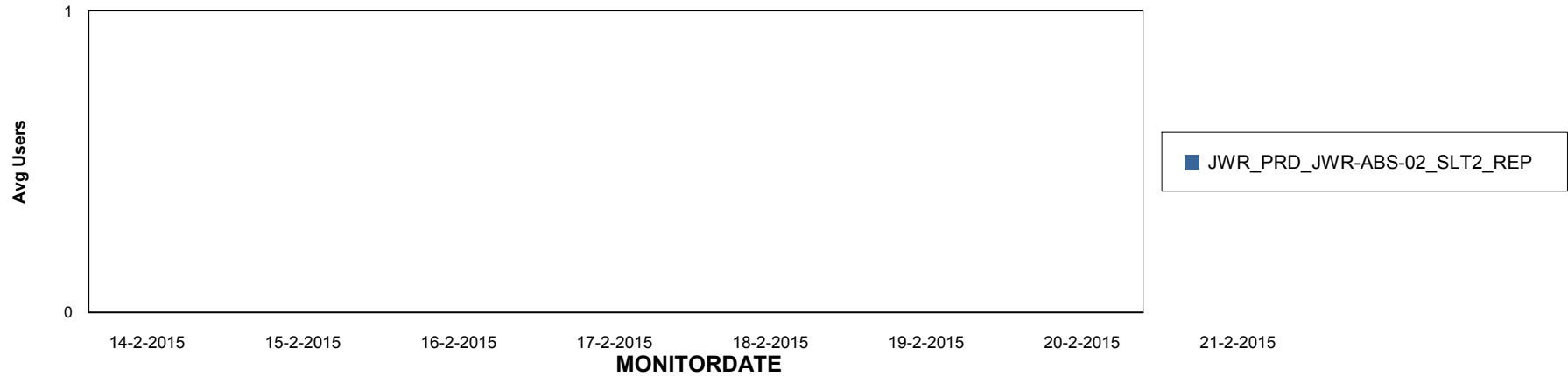
# Weekly SLA Customer Report

Customer JWR Production  
Database ID 43

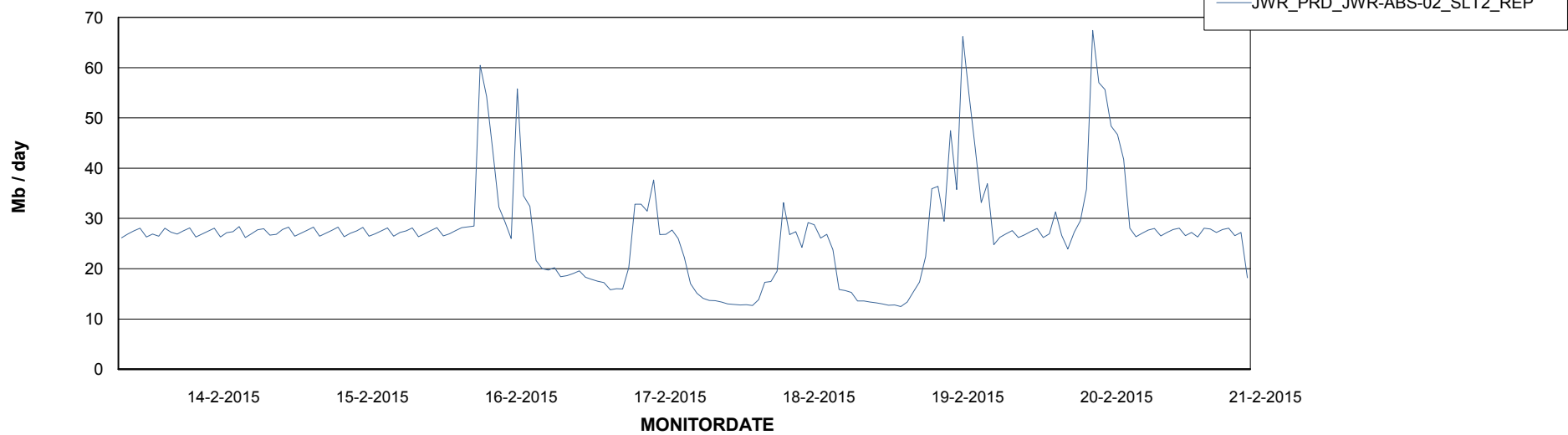


=====  
ABSolute Application ReportServer Services  
=====

## Disaster per ReportServer



## Avg memory used per ReportServer Service



# Weekly SLA Customer Report

Customer JWR Production  
Database ID 43



## Disaster per ABS component

