

Weekly SLA Customer Report

Customer WBL_Production
Database ID 40

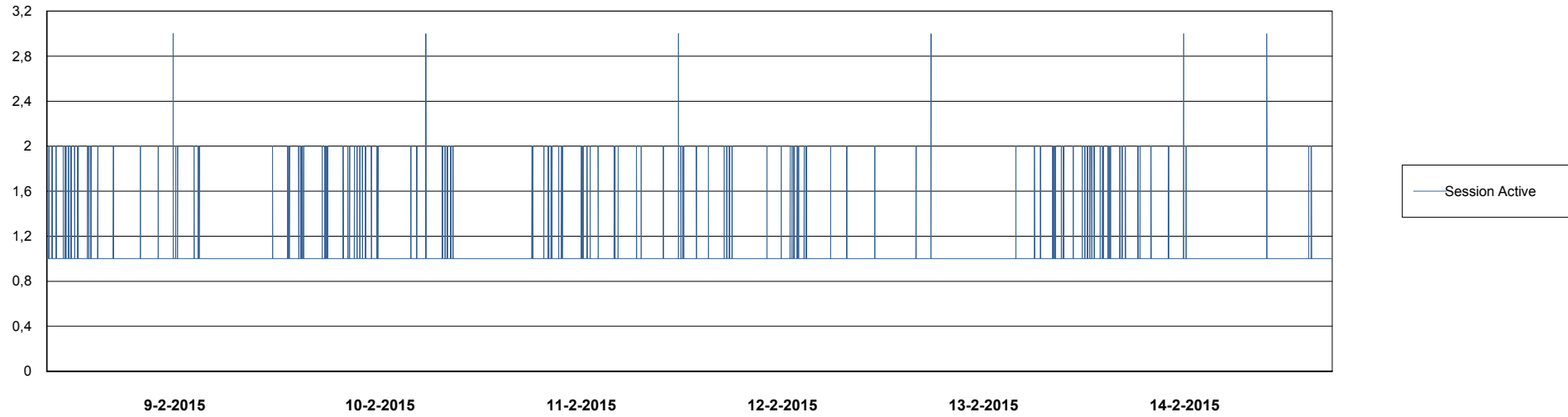
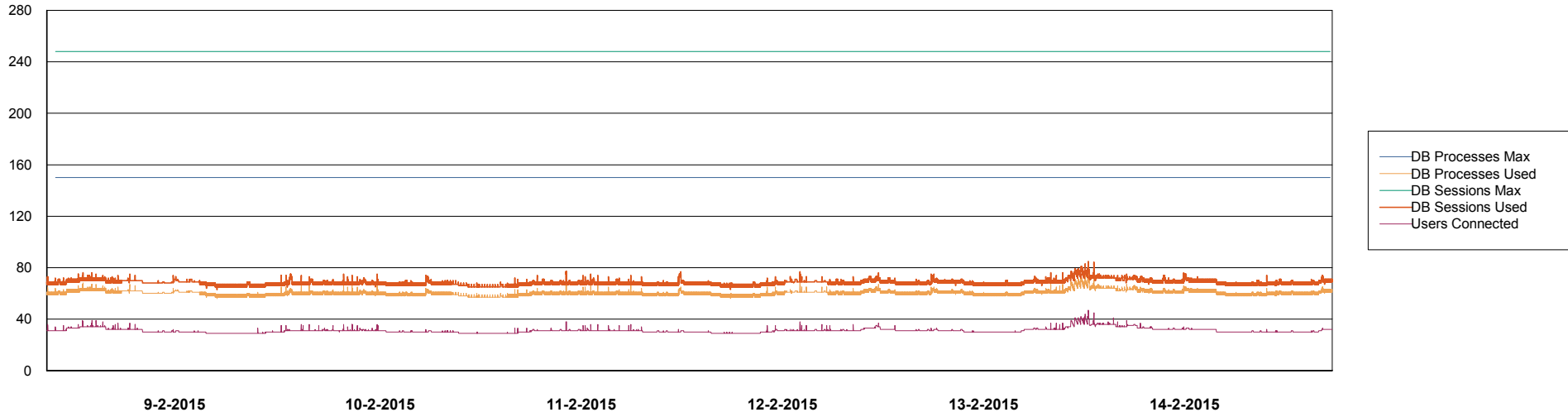


Weekly SLA Customer Report

Customer WBL_Production
Database ID 40



DATABASE PERFORMANCE WBLDB_Production

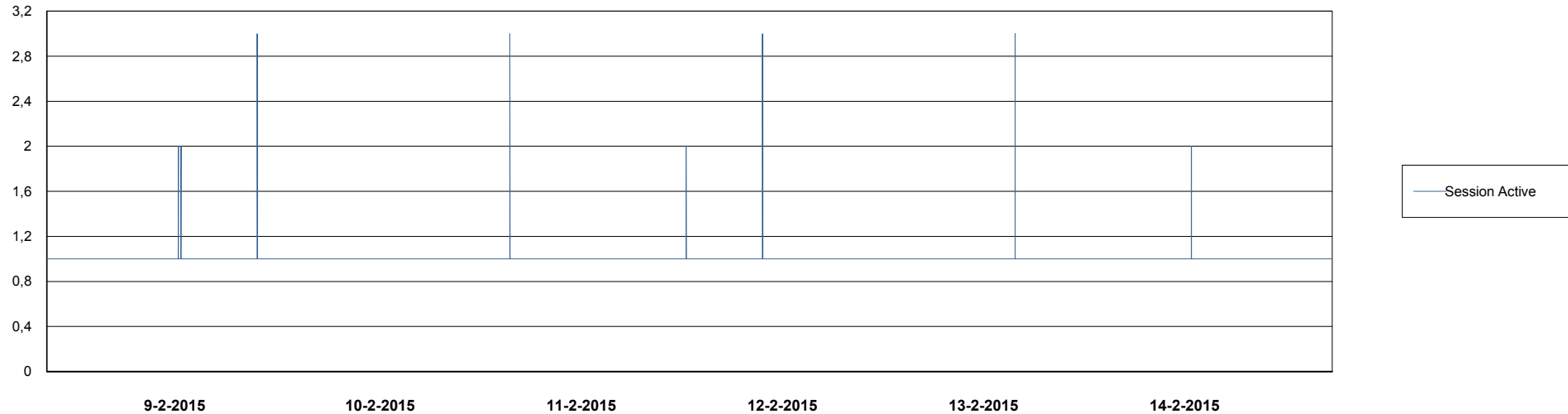
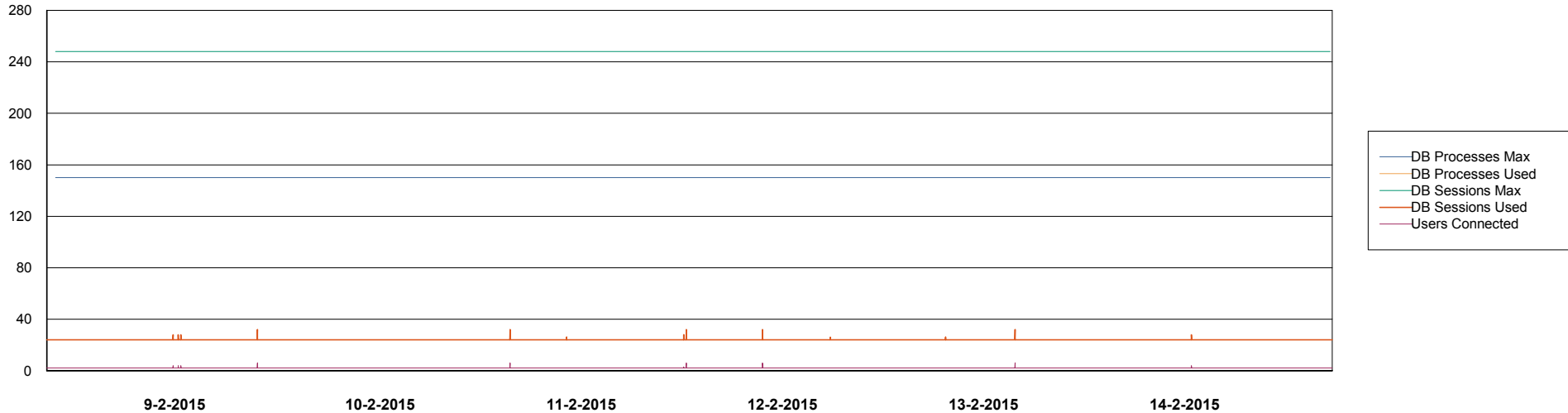


Weekly SLA Customer Report

Customer WBL_Production
Database ID 40



DATABASE PERFORMANCE WBLDB_Standby



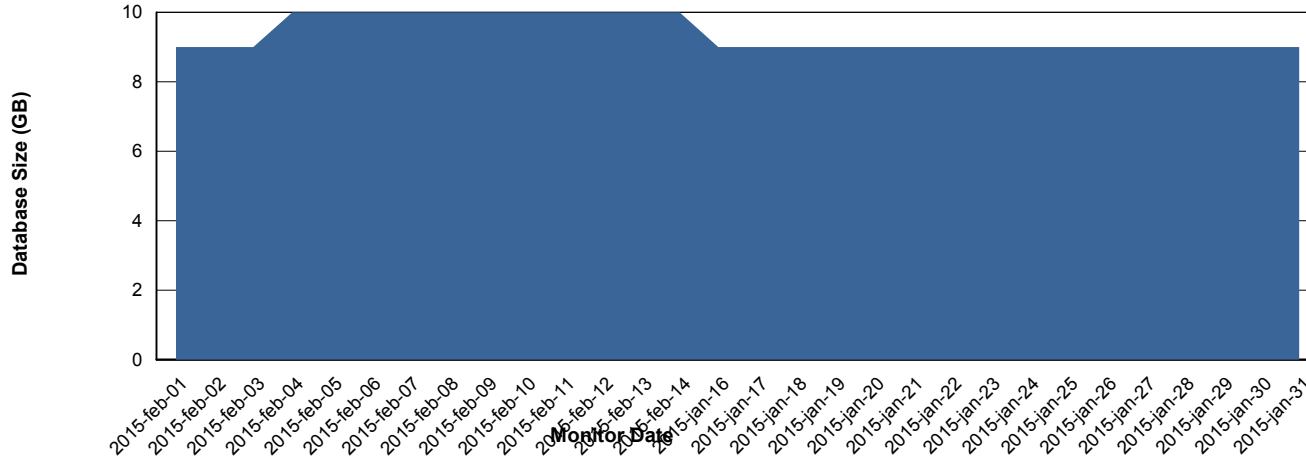
Weekly SLA Customer Report

Customer WBL_Production
 Database ID 40



=====
 DATABASE SIZE WBLDB_Production
 =====

Database growth over last month



=====
 DATABASE TABLESPACES WBLDB_Production
 =====

TOTAL DATABASE SIZE PER TABLESPACE

| Date | Tablespace Name | Filesize (Gb) | Usedsize (Gb) | Percentage free |
|-----------|-----------------|---------------|---------------|-----------------|
| 14-2-2015 | ABSDATA | 6 | 4 | 33 |
| | INDX | 5 | 4 | 20 |
| 13-2-2015 | ABSDATA | 6 | 4 | 33 |
| | INDX | 5 | 4 | 20 |
| 12-2-2015 | ABSDATA | 6 | 4 | 33 |
| | INDX | 5 | 4 | 20 |
| 11-2-2015 | ABSDATA | 6 | 4 | 33 |
| | INDX | 5 | 4 | 20 |
| 10-2-2015 | ABSDATA | 6 | 4 | 33 |
| | INDX | 5 | 4 | 20 |
| 9-2-2015 | ABSDATA | 6 | 4 | 33 |
| | INDX | 5 | 4 | 20 |
| 8-2-2015 | ABSDATA | 6 | 4 | 33 |
| | INDX | 5 | 4 | 20 |

Weekly SLA Customer Report

Customer WBL_Production
Database ID 40



=====
STANDBY DATABASE HEALTH WBL_Production
=====

Recovery lag for last 7 days

