

# Weekly SLA Customer Report

Customer RFL\_Production  
Database ID 36



=====  
HARDDISK USAGE RFL\_PRD\_ORACLE1  
=====

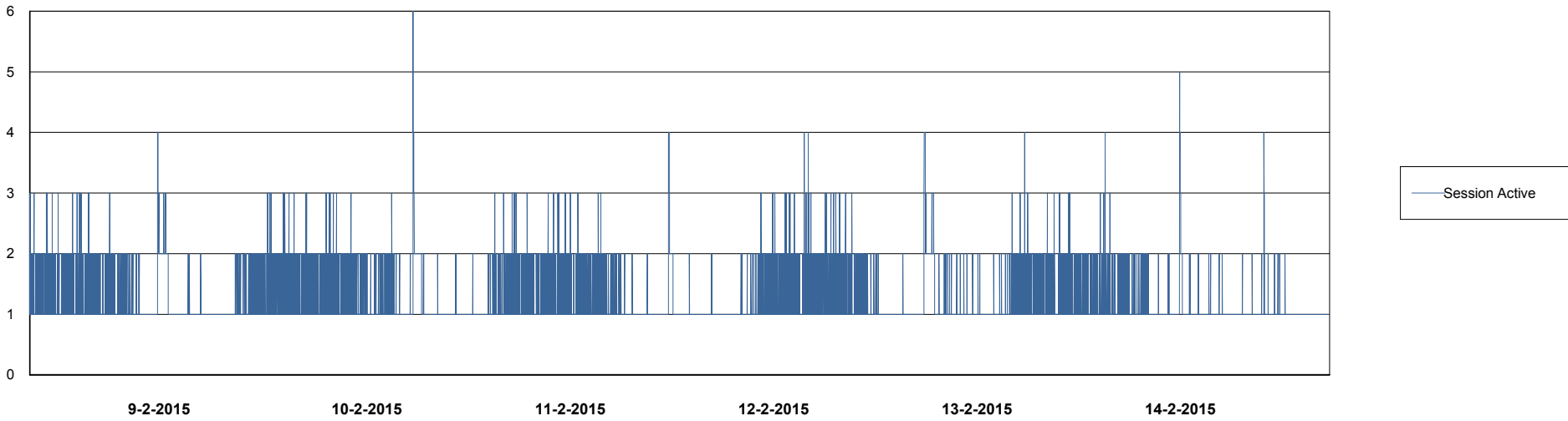
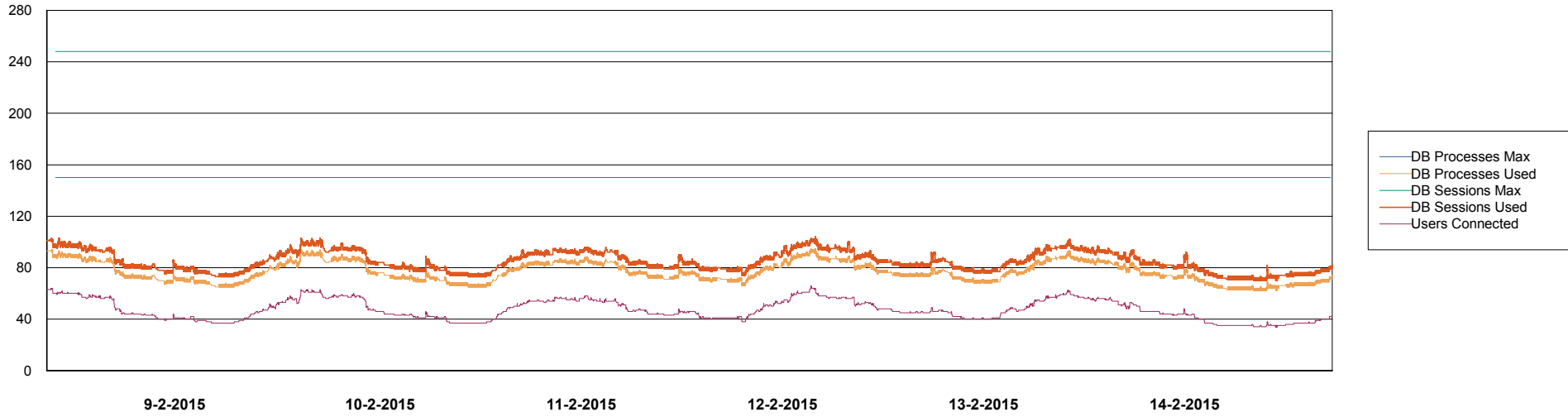
	Total disk space on C (GB)	Free disk space on C (GB)	Total disk space on D (GB)	Free disk space on D (GB)	Total disk space on E (GB)	Free disk space on E (GB)
14-2-2015	279	112	137	93	137	71
13-2-2015	279	112	137	93	137	72
12-2-2015	279	112	137	93	137	73
11-2-2015	279	112	137	93	137	73
10-2-2015	279	113	137	93	137	74
9-2-2015	279	112	137	93	137	75
8-2-2015	279	113	137	93	137	76

# Weekly SLA Customer Report

Customer RFL\_Production  
Database ID 36



## DATABASE PERFORMANCE RFLDB\_Production

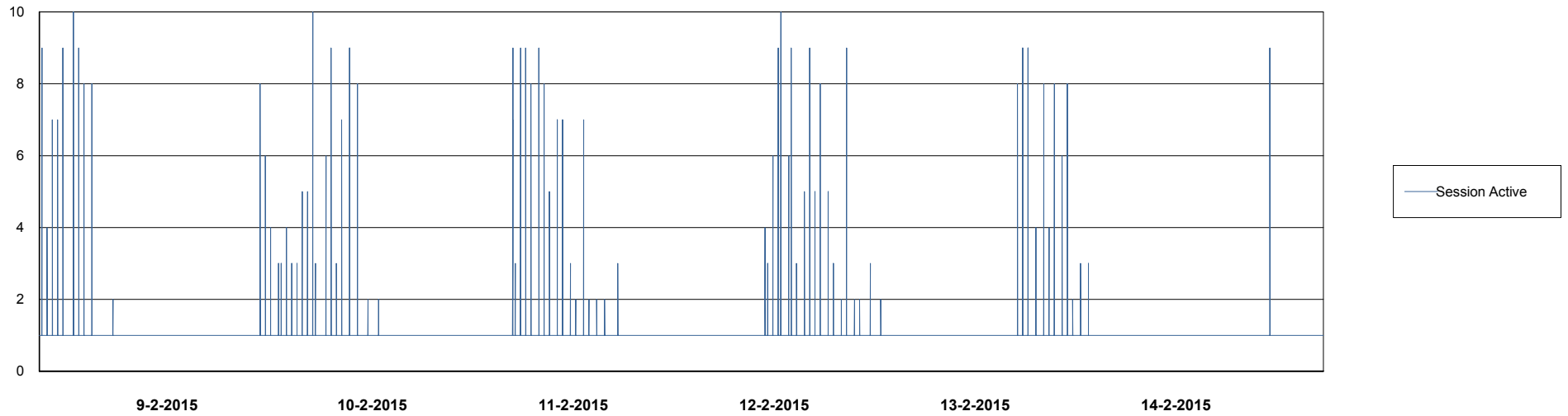
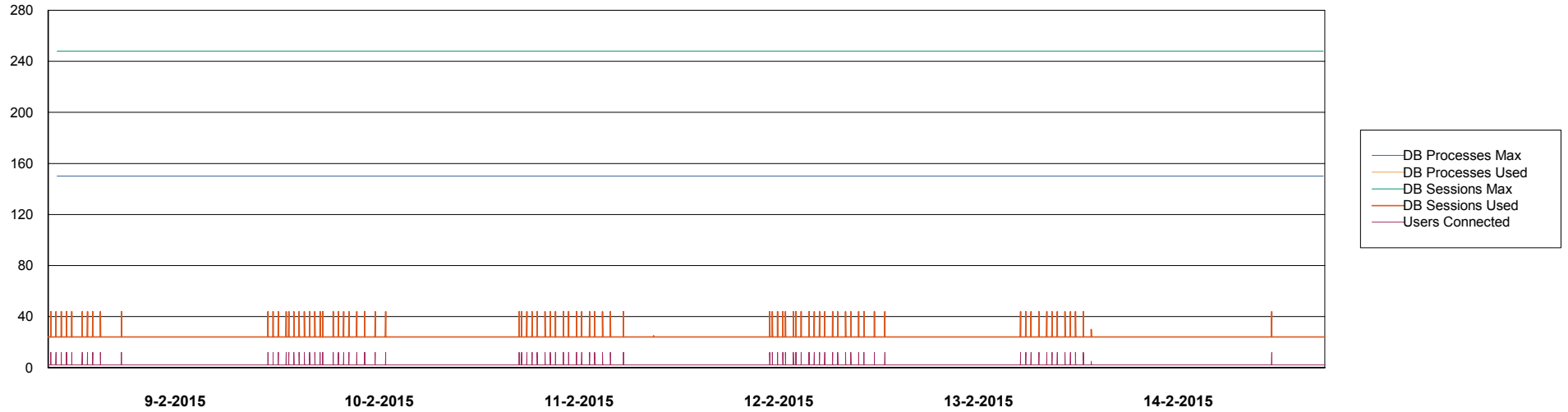


# Weekly SLA Customer Report

Customer RFL\_Production  
Database ID 36



## DATABASE PERFORMANCE RFLDB\_Standby



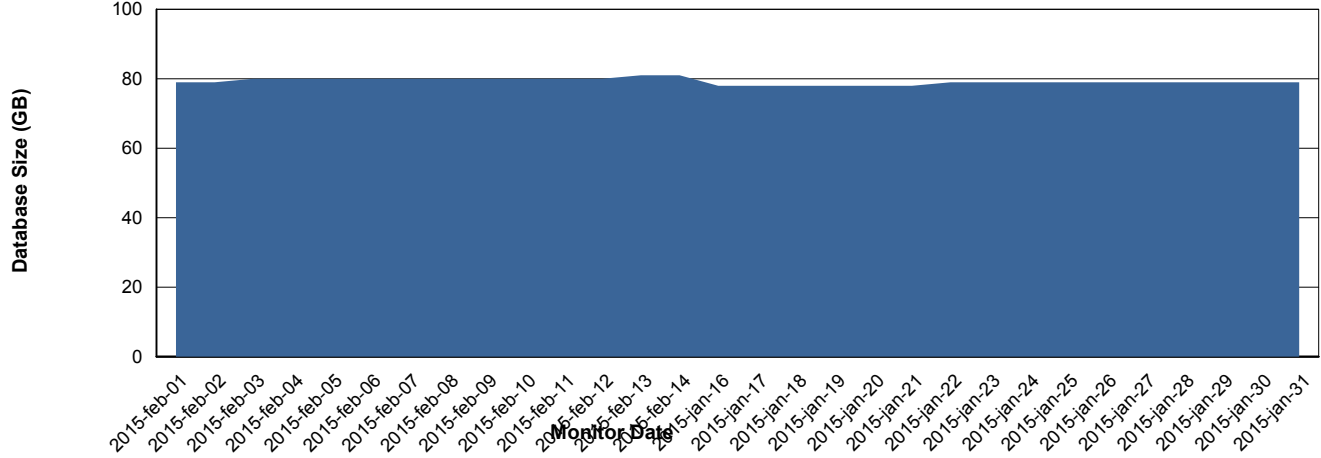
# Weekly SLA Customer Report

Customer RFL\_Production  
 Database ID 36



=====  
 DATABASE SIZE RFLDB\_Production  
 =====

## Database growth over last month



=====  
 DATABASE TABLESPACES RFLDB\_Production  
 =====

### TOTAL DATABASE SIZE PER TABLESPACE

Date	Tablespace Name	Filesize (Gb)	Usedsize (Gb)	Percentage free
14-2-2015	ABSDATA	28	19	32
	INDX	80	60	25
13-2-2015	ABSDATA	28	19	32
	INDX	80	60	25
12-2-2015	ABSDATA	28	19	32
	INDX	80	60	25
11-2-2015	ABSDATA	28	19	32
	INDX	80	60	25
10-2-2015	ABSDATA	28	19	32
	INDX	80	60	25
9-2-2015	ABSDATA	28	19	32
	INDX	80	60	25
8-2-2015	ABSDATA	28	19	32
	INDX	80	60	25

