

Weekly SLA Customer Report

Customer PCO Production
 Database ID 44



=====
 HARDDISK USAGE PCO_PRD_ORACLE1
 =====

	Total disk space on C (GB)	Free disk space on C (GB)	Total disk space on D (GB)	Free disk space on D (GB)
14-2-2015	279	217	838	195
13-2-2015	279	217	838	135
12-2-2015	279	217	838	130
11-2-2015	279	217	838	133
10-2-2015	279	217	838	136
9-2-2015	279	217	838	138
8-2-2015	279	217	838	140

=====
 HARDDISK USAGE PCO_PRD_ORACLE2
 =====

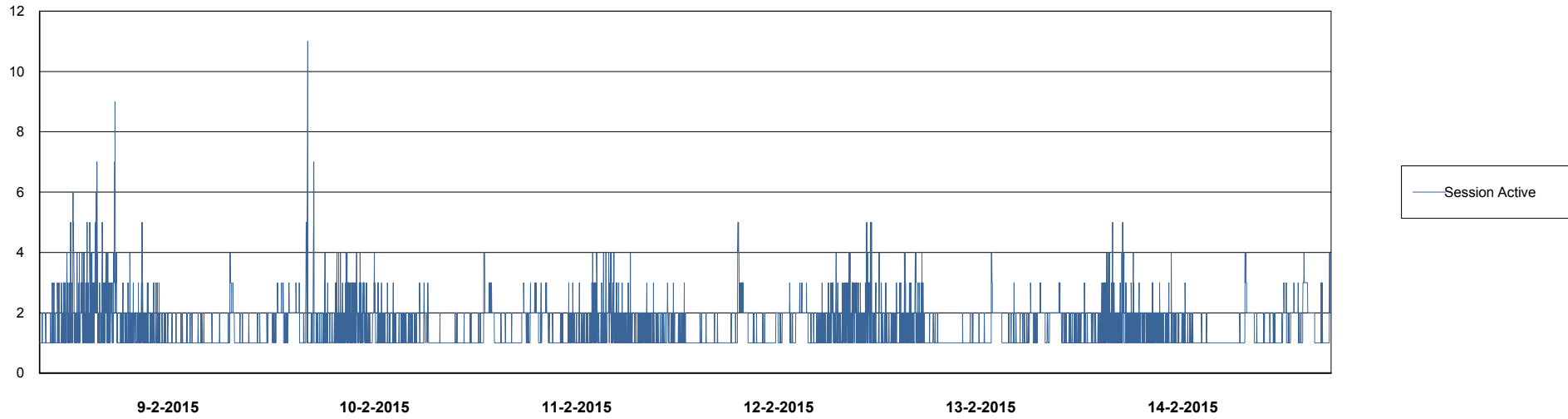
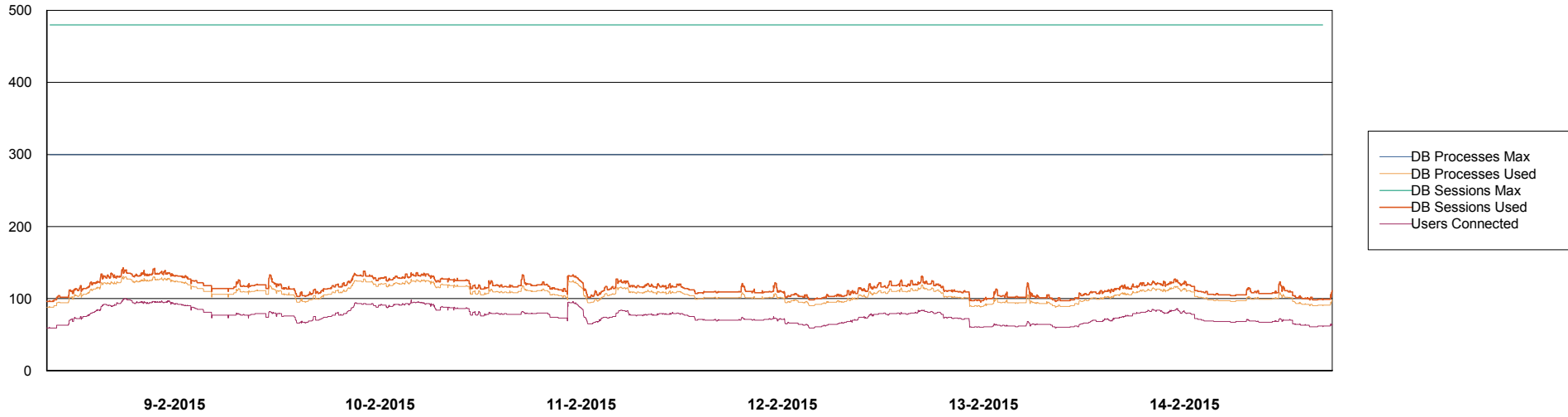
	Total disk space on C (GB)	Free disk space on C (GB)	Total disk space on D (GB)	Free disk space on D (GB)
14-2-2015	279	219	838	600
13-2-2015	279	221	838	309
12-2-2015	279	222	838	278
11-2-2015	279	217	838	280
10-2-2015	279	213	838	283
9-2-2015	279	212	838	286
8-2-2015	279	212	838	287

Weekly SLA Customer Report

Customer PCO Production
Database ID 44



DATABASE PERFORMANCE PCODB_Production

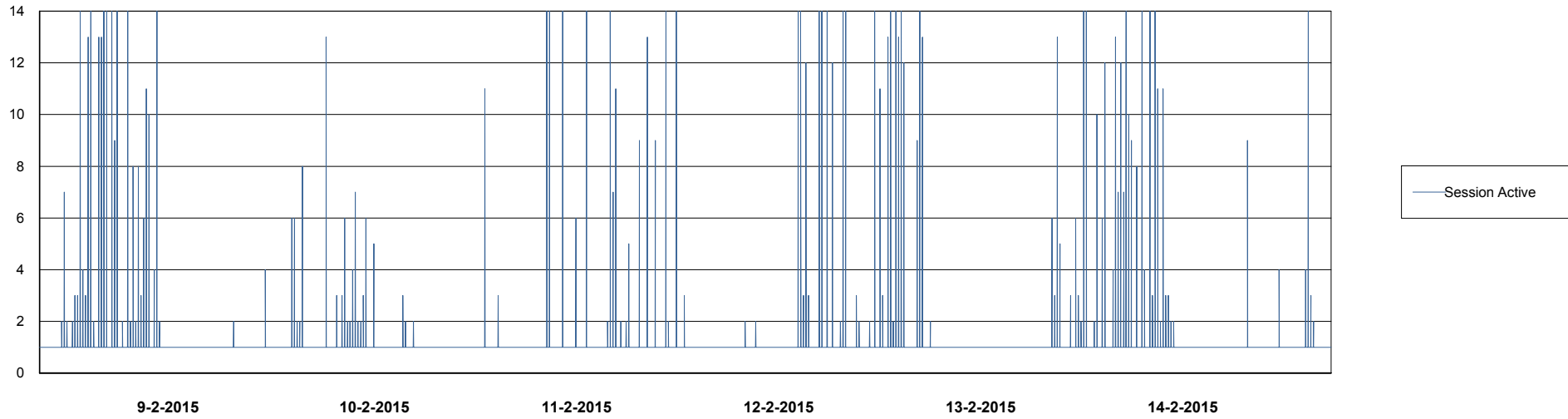
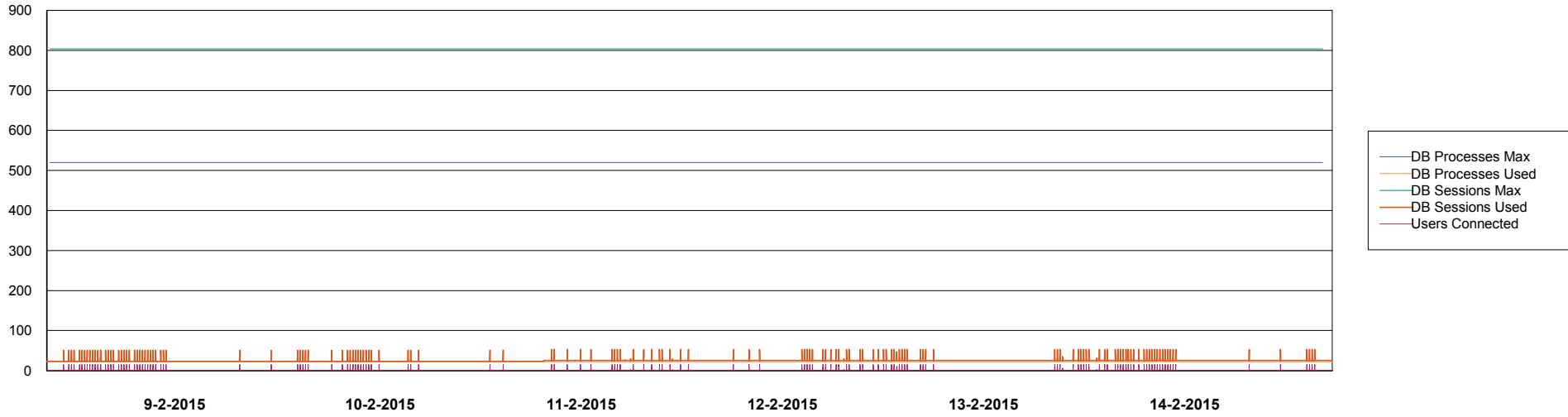


Weekly SLA Customer Report

Customer PCO Production
Database ID 44



DATABASE PERFORMANCE PCODB_Standby



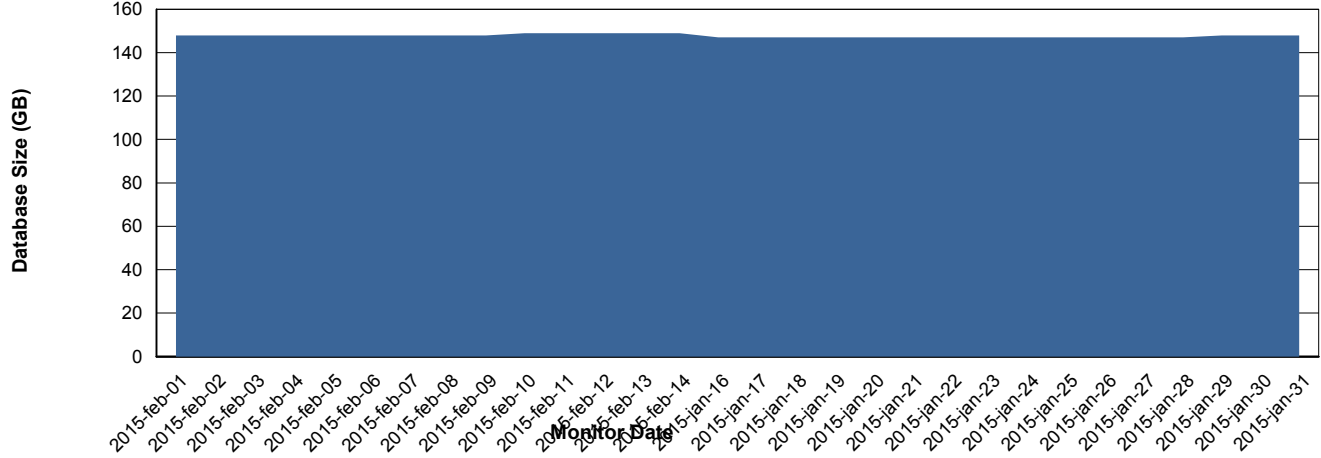
Weekly SLA Customer Report

Customer PCO Production
 Database ID 44



=====
 DATABASE SIZE PCODB_Production
 =====

Database growth over last month



=====
 DATABASE TABLESPACES PCODB_Production
 =====

TOTAL DATABASE SIZE PER TABLESPACE

Date	Tablespace Name	Filesize (Gb)	Usedsize (Gb)	Percentage free
14-2-2015	ABSDATA	78	60	23
	INDX	109	87	20
13-2-2015	ABSDATA	78	60	23
	INDX	109	87	20
12-2-2015	ABSDATA	78	60	23
	INDX	109	87	20
11-2-2015	ABSDATA	78	60	23
	INDX	109	87	20
10-2-2015	ABSDATA	78	60	23
	INDX	109	87	20
9-2-2015	ABSDATA	78	60	23
	INDX	109	87	20
8-2-2015	ABSDATA	78	60	23
	INDX	109	87	20

Weekly SLA Customer Report

Customer PCO Production
Database ID 44



=====
STANDBY DATABASE HEALTH PCO Production
=====

Recovery lag for last 7 days

