

## Weekly SLA Customer Report

Customer      NIX\_Production  
 Database ID    51



=====  
 HARDDISK USAGE    NIX\_PRD\_ABSAPP1  
 =====

|           | Total disk space on C (GB) | Free disk space on C (GB) |
|-----------|----------------------------|---------------------------|
| 14-2-2015 | 136                        | 89                        |
| 13-2-2015 | 136                        | 89                        |
| 12-2-2015 | 136                        | 89                        |
| 11-2-2015 | 136                        | 89                        |
| 10-2-2015 | 136                        | 89                        |
| 9-2-2015  | 136                        | 89                        |
| 8-2-2015  | 136                        | 90                        |

=====  
 HARDDISK USAGE    NIX\_PRD\_ABSWEB1  
 =====

|           | Total disk space on C (GB) | Free disk space on C (GB) | Total disk space on D (GB) |
|-----------|----------------------------|---------------------------|----------------------------|
| 14-2-2015 | 930                        | 744                       | 3                          |
| 13-2-2015 | 930                        | 744                       | 3                          |
| 12-2-2015 | 930                        | 745                       | 3                          |
| 11-2-2015 | 930                        | 746                       | 3                          |
| 10-2-2015 | 930                        | 746                       | 3                          |
| 9-2-2015  | 930                        | 746                       | 3                          |
| 8-2-2015  | 930                        | 747                       | 3                          |

## Weekly SLA Customer Report

Customer      NIX\_Production  
 Database ID    51



=====  
 HARDDISK USAGE    NIX\_PRD\_ORACLE\_B11  
 =====

|           | Total disk space<br>on C (GB) | Free disk space<br>on C (GB) | Total disk space<br>on D (GB) | Free disk space<br>on D (GB) | Total disk space<br>on E (GB) | Free disk space<br>on E (GB) |
|-----------|-------------------------------|------------------------------|-------------------------------|------------------------------|-------------------------------|------------------------------|
| 14-2-2015 | 99                            | 52                           | 279                           | 169                          | 99                            | 28                           |
| 13-2-2015 | 99                            | 52                           | 279                           | 169                          | 99                            | 28                           |
| 12-2-2015 | 99                            | 53                           | 279                           | 169                          | 99                            | 28                           |
| 11-2-2015 | 99                            | 54                           | 279                           | 169                          | 99                            | 28                           |
| 10-2-2015 | 99                            | 54                           | 279                           | 169                          | 99                            | 28                           |
| 9-2-2015  | 99                            | 54                           | 279                           | 169                          | 99                            | 28                           |
| 8-2-2015  | 99                            | 54                           | 279                           | 169                          | 99                            | 29                           |

=====  
 HARDDISK USAGE    NIX\_PRD\_ORCDB1  
 =====

|           | Total disk space<br>on C (GB) | Free disk space<br>on C (GB) | Total disk space<br>on D (GB) | Free disk space<br>on D (GB) | Total disk space<br>on E (GB) | Free disk space<br>on E (GB) |
|-----------|-------------------------------|------------------------------|-------------------------------|------------------------------|-------------------------------|------------------------------|
| 14-2-2015 | 136                           | 67                           | 136                           | 27                           | 136                           | 49                           |
| 13-2-2015 | 136                           | 67                           | 136                           | 27                           | 136                           | 50                           |
| 12-2-2015 | 136                           | 67                           | 136                           | 27                           | 136                           | 50                           |
| 11-2-2015 | 136                           | 67                           | 136                           | 27                           | 136                           | 50                           |
| 10-2-2015 | 136                           | 67                           | 136                           | 27                           | 136                           | 51                           |
| 9-2-2015  | 136                           | 68                           | 136                           | 27                           | 136                           | 51                           |
| 8-2-2015  | 136                           | 68                           | 136                           | 27                           | 136                           | 50                           |

# Weekly SLA Customer Report

Customer NIX\_Production  
Database ID 51



HARDDISK USAGE NIX\_PRD\_ORCDB2

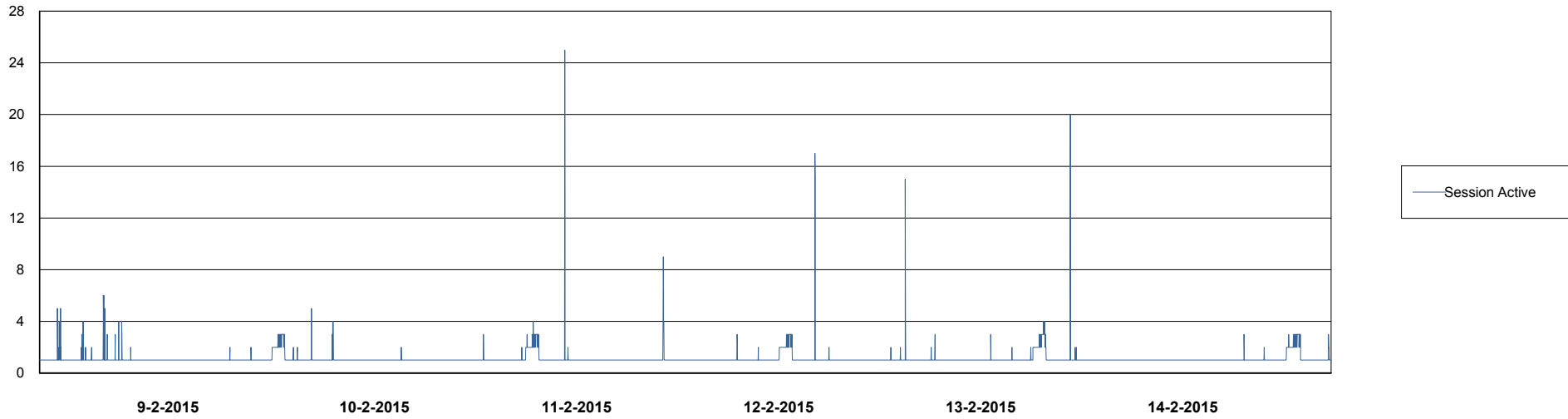
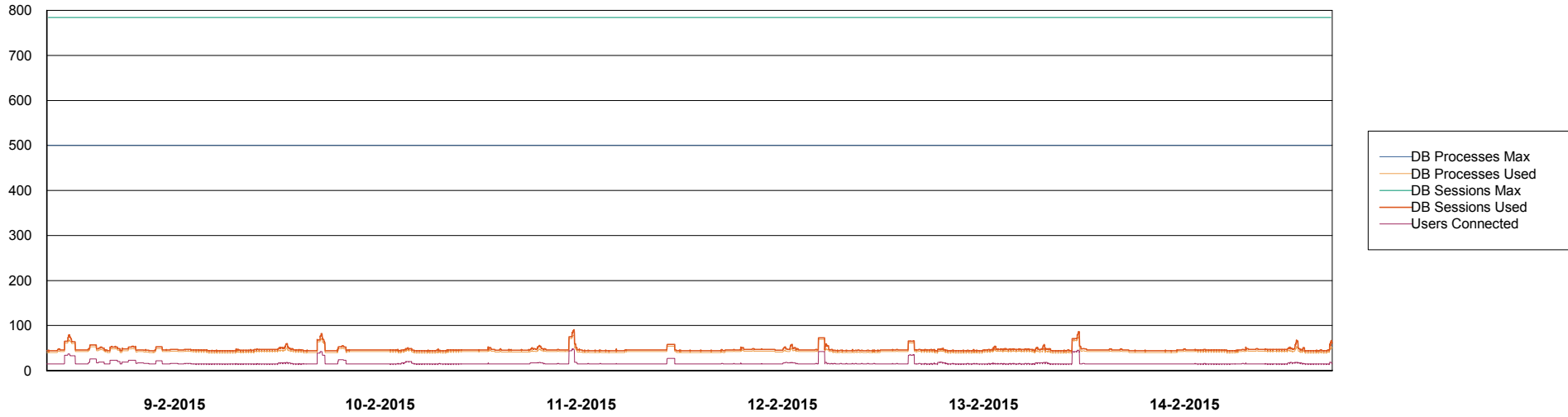
|           | Total disk space on C (GB) | Free disk space on C (GB) | Total disk space on D (GB) | Free disk space on D (GB) | Total disk space on E (GB) | Free disk space on E (GB) |
|-----------|----------------------------|---------------------------|----------------------------|---------------------------|----------------------------|---------------------------|
| 14-2-2015 | 279                        | 65                        | 279                        | 51                        | 279                        | 117                       |
| 13-2-2015 | 279                        | 65                        | 279                        | 51                        | 279                        | 141                       |
| 12-2-2015 | 279                        | 66                        | 279                        | 51                        | 279                        | 159                       |
| 11-2-2015 | 279                        | 66                        | 279                        | 51                        | 279                        | 145                       |
| 10-2-2015 | 279                        | 67                        | 279                        | 51                        | 279                        | 115                       |
| 9-2-2015  | 279                        | 67                        | 279                        | 51                        | 279                        | 53                        |
| 8-2-2015  | 279                        | 67                        | 279                        | 51                        | 279                        | 81                        |

# Weekly SLA Customer Report

Customer NIX\_Production  
Database ID 51



## DATABASE PERFORMANCE NIXDB\_BI

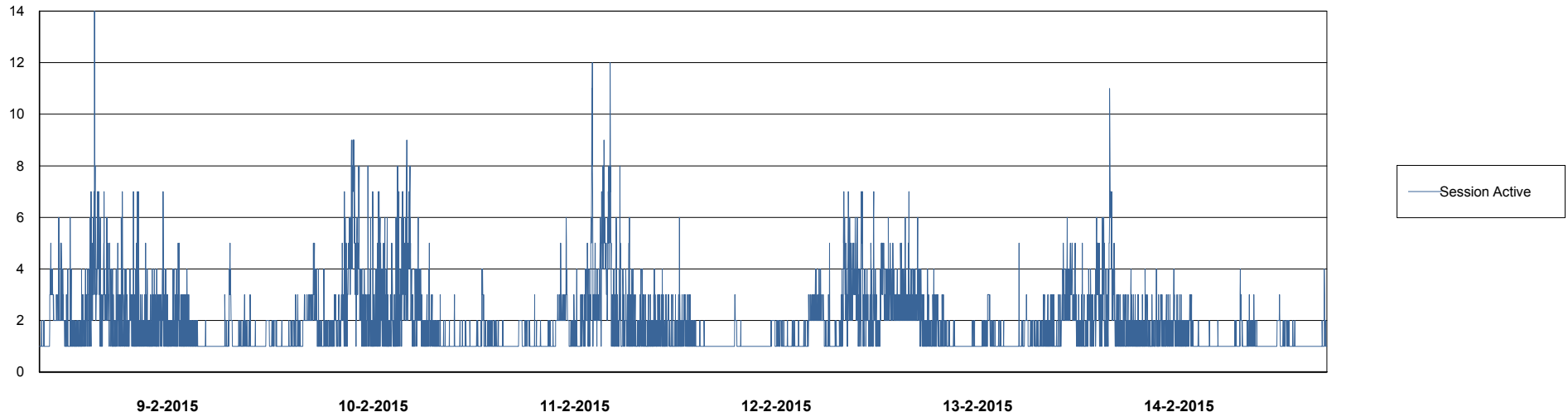
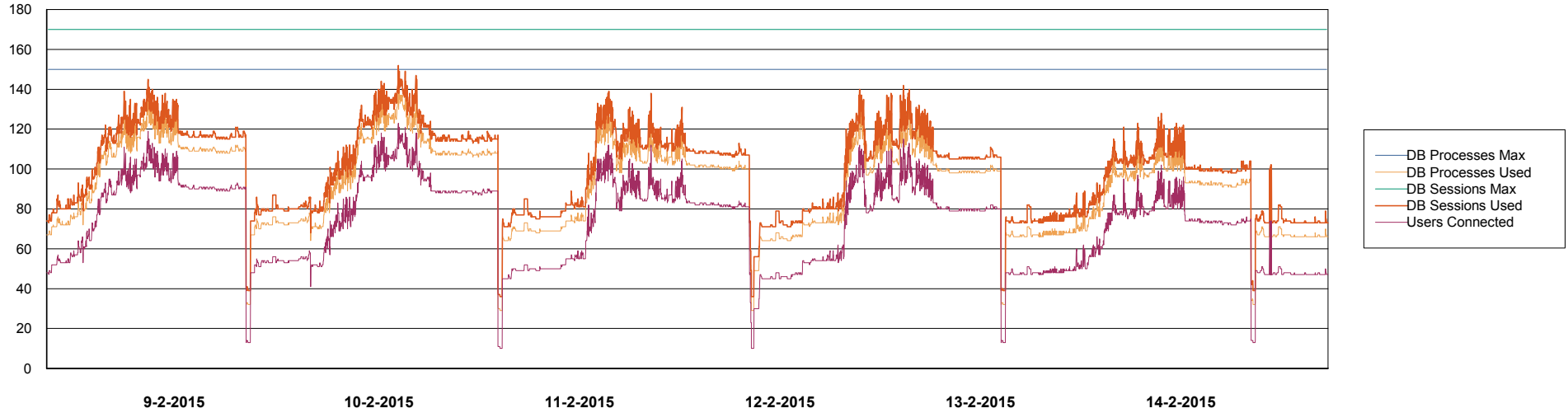


# Weekly SLA Customer Report

Customer NIX\_Production  
Database ID 51



=====  
DATABASE PERFORMANCE NIXDB\_Production  
=====

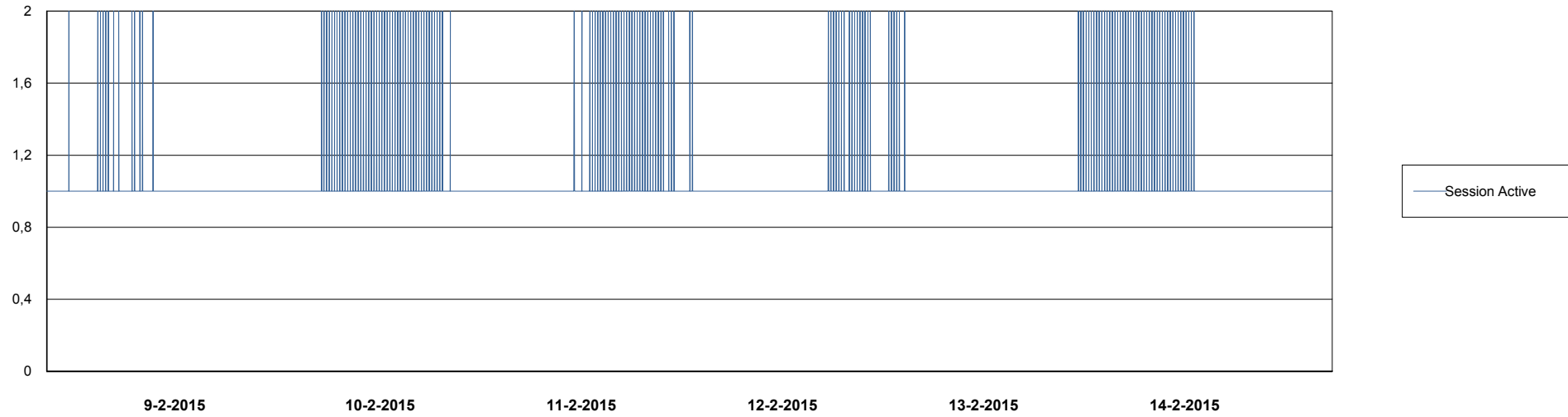
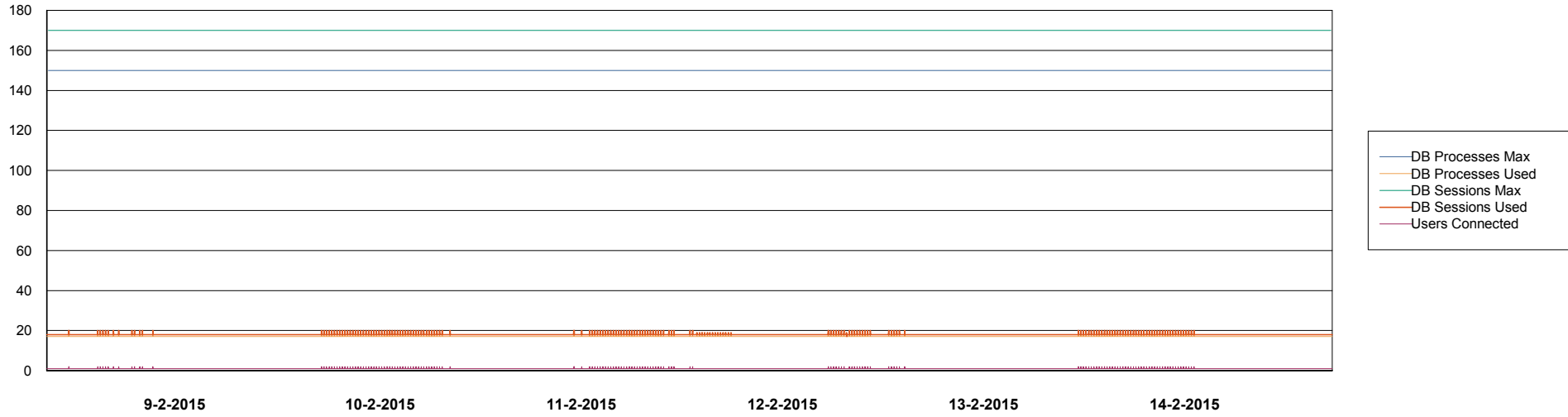


# Weekly SLA Customer Report

Customer NIX\_Production  
Database ID 51



DATABASE PERFORMANCE NIXDB\_Standby



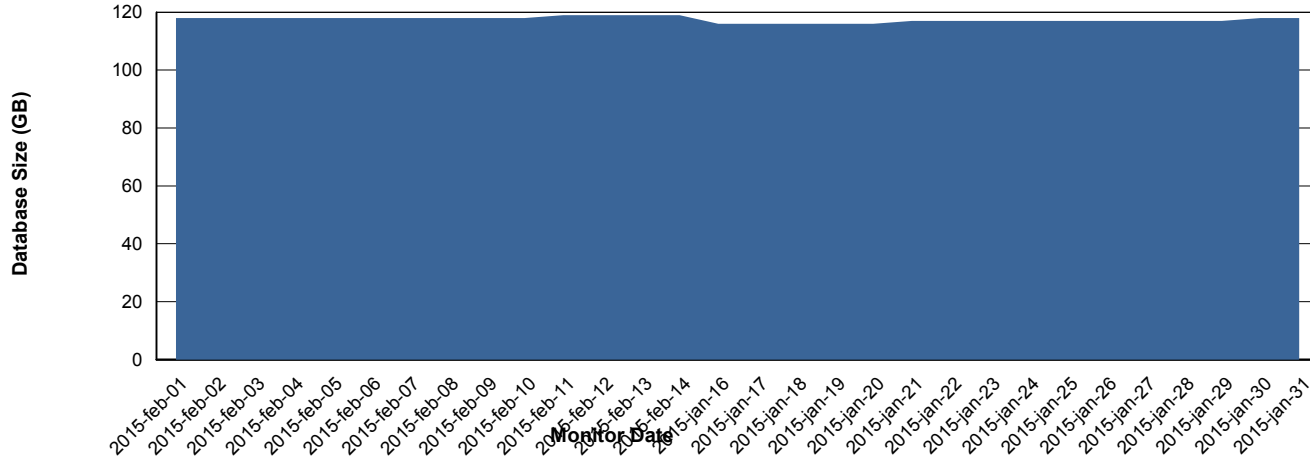
# Weekly SLA Customer Report

Customer NIX\_Production  
Database ID 51



=====  
DATABASE SIZE NIXDB\_Production  
=====

## Database growth over last month



# Weekly SLA Customer Report

Customer NIX\_Production  
Database ID 51



=====  
DATABASE TABLESPACES NIXDB\_BI  
=====  
TOTAL DATABASE SIZE PER TABLESPACE

| Date      | Tablespace Name | Filesize (Gb) | Usedsize (Gb) | Percentage free |
|-----------|-----------------|---------------|---------------|-----------------|
| 14-2-2015 | ABSDATA         | 28            | 19            | 32              |
|           | INDX            | 44            | 31            | 30              |
| 13-2-2015 | ABSDATA         | 28            | 19            | 32              |
|           | INDX            | 44            | 31            | 30              |
| 12-2-2015 | ABSDATA         | 28            | 19            | 32              |
|           | INDX            | 44            | 31            | 30              |
| 11-2-2015 | ABSDATA         | 28            | 19            | 32              |
|           | INDX            | 44            | 30            | 32              |
| 10-2-2015 | ABSDATA         | 28            | 19            | 32              |
|           | INDX            | 44            | 30            | 32              |
| 9-2-2015  | ABSDATA         | 28            | 19            | 32              |
|           | INDX            | 44            | 30            | 32              |
| 8-2-2015  | ABSDATA         | 28            | 19            | 32              |
|           | INDX            | 44            | 30            | 32              |

# Weekly SLA Customer Report

Customer NIX\_Production  
 Database ID 51



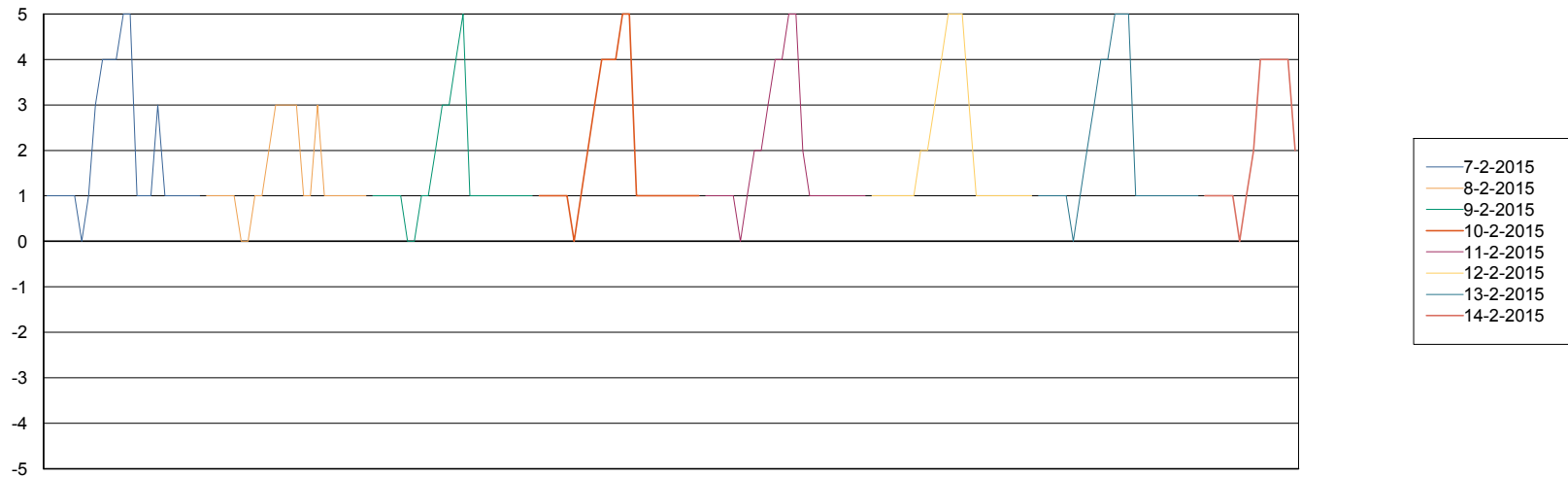
=====  
 DATABASE TABLESPACES NIXDB\_Production  
 =====

TOTAL DATABASE SIZE PER TABLESPACE

| Date      | Tablespace Name | Filesize (Gb) | Usedsize (Gb) | Percentage free |
|-----------|-----------------|---------------|---------------|-----------------|
| 14-2-2015 | ABSDATA         | 40            | 31            | 23              |
|           | INDX            | 109           | 85            | 22              |
| 13-2-2015 | ABSDATA         | 40            | 31            | 23              |
|           | INDX            | 109           | 85            | 22              |
| 12-2-2015 | ABSDATA         | 40            | 31            | 23              |
|           | INDX            | 109           | 85            | 22              |
| 11-2-2015 | ABSDATA         | 40            | 31            | 23              |
|           | INDX            | 109           | 85            | 22              |
| 10-2-2015 | ABSDATA         | 40            | 31            | 23              |
|           | INDX            | 109           | 85            | 22              |
| 9-2-2015  | ABSDATA         | 40            | 31            | 23              |
|           | INDX            | 109           | 85            | 22              |
| 8-2-2015  | ABSDATA         | 40            | 31            | 23              |
|           | INDX            | 109           | 85            | 22              |

=====  
 STANDBY DATABASE HEALTH NIX\_Production  
 =====

Recovery lag for last 7 days



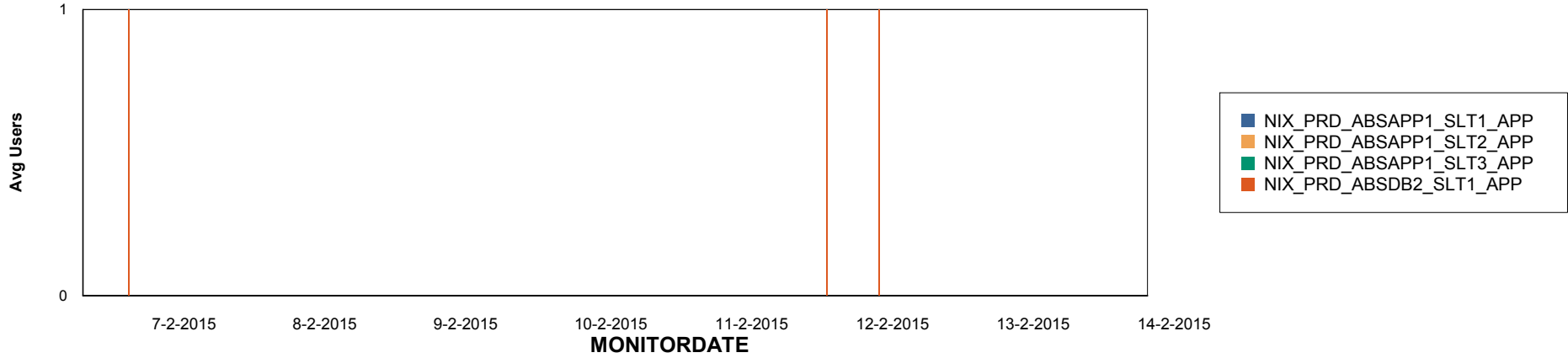
# Weekly SLA Customer Report

Customer NIX\_Production  
Database ID 51

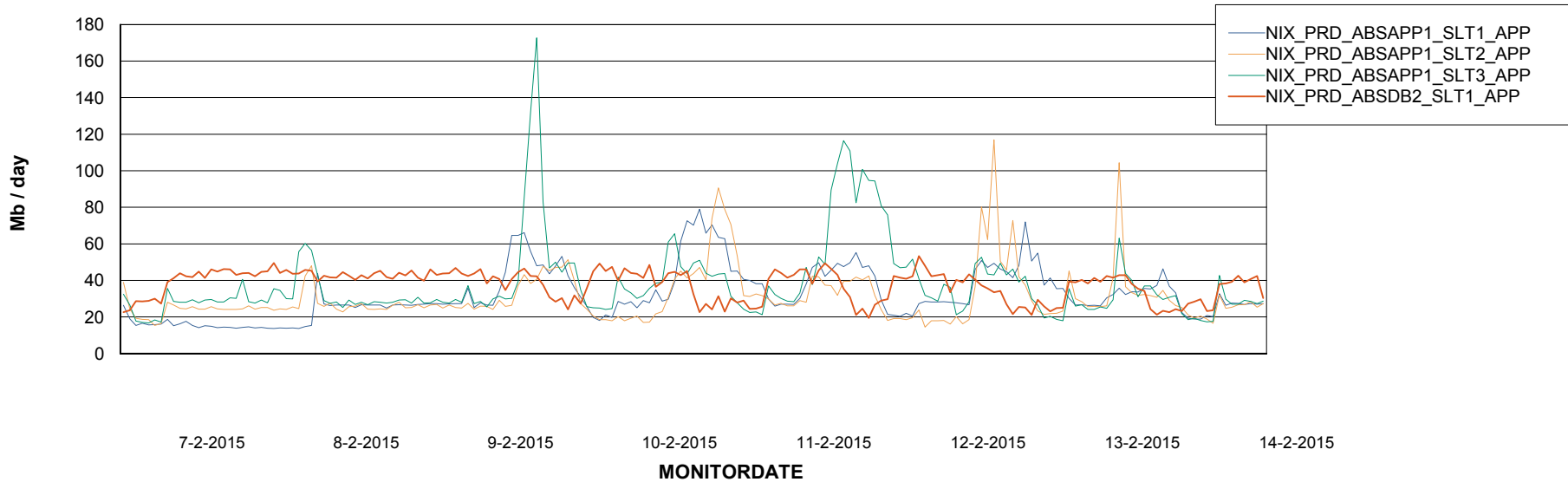


## ABSolute Application Server Services

### Disaster per ABS Server



### Avg memory used per ABS Server Service



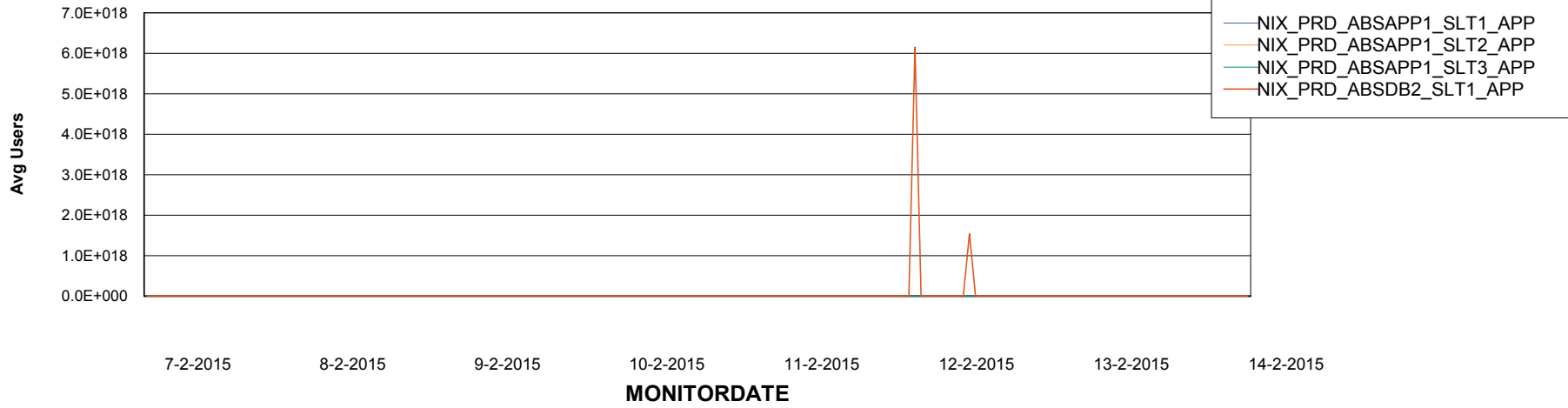
# Weekly SLA Customer Report

Customer NIX\_Production  
Database ID 51



=====  
ABSolute Application Server Services  
=====

### Avg users per day per ABS server



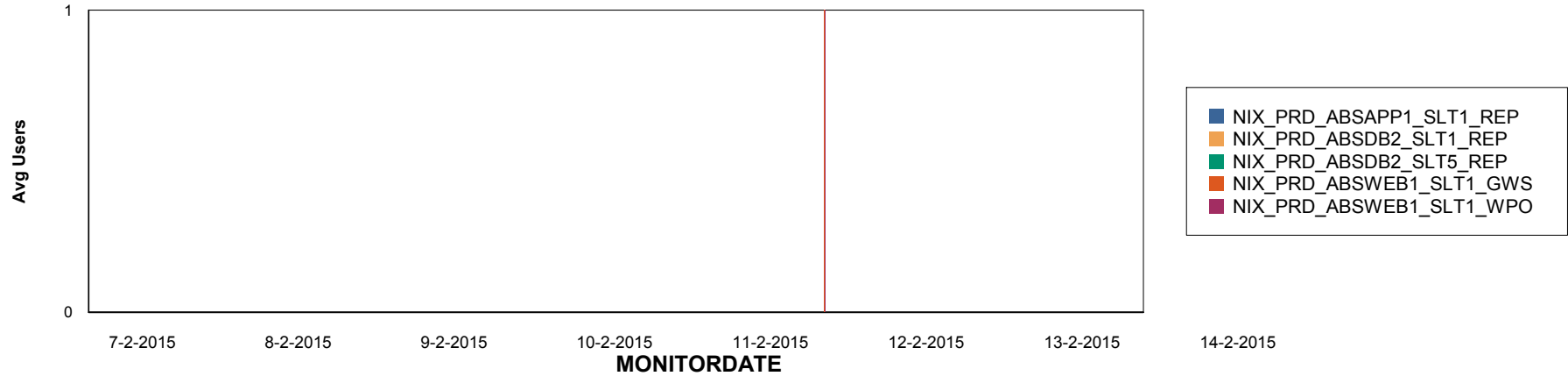
# Weekly SLA Customer Report

Customer NIX\_Production  
Database ID 51

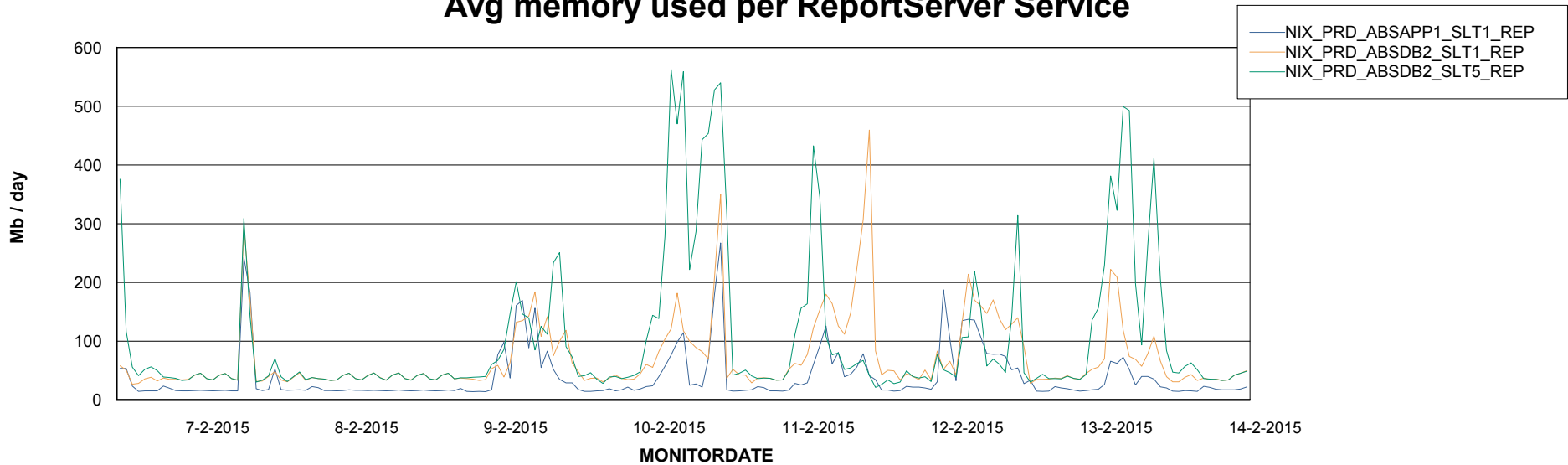


=====  
ABSolute Application ReportServer Services  
=====

## Disaster per ReportServer



## Avg memory used per ReportServer Service



# Weekly SLA Customer Report

Customer NIX\_Production  
Database ID 51



## Disaster per ABS component

