

# Weekly SLA Customer Report

Customer JWR Production  
Database ID 43



=====  
HARDDISK USAGE JWR\_PRD\_JWR-ABS-01  
=====

	Used disk space on / (GB)	Total disk space on / (GB)	Free disk space on / (GB)
14-2-2015	27	49	19
13-2-2015	27	49	19
12-2-2015	27	49	19
11-2-2015	27	49	19
10-2-2015	27	49	19
9-2-2015	27	49	19
8-2-2015	27	49	20

=====  
HARDDISK USAGE JWR\_PRD\_JWR-ABS-02  
=====

	Used disk space on / (GB)	Total disk space on / (GB)	Free disk space on / (GB)
14-2-2015	28	49	19
13-2-2015	28	49	19
12-2-2015	28	49	19
11-2-2015	28	49	19
10-2-2015	28	49	19
9-2-2015	28	49	19
8-2-2015	28	49	19

## Weekly SLA Customer Report

Customer      JWR Production  
 Database ID    43



=====  
 HARDDISK USAGE    JWR\_PRD\_JWR-ODB-01  
 =====

	Used disk space on / (GB)	Total disk space on / (GB)	Free disk space on / (GB)
14-2-2015	83	148	58
13-2-2015	84	148	57
12-2-2015	84	148	57
11-2-2015	84	148	57
10-2-2015	84	148	57
9-2-2015	84	148	57
8-2-2015	83	148	57

=====  
 HARDDISK USAGE    JWR\_PRD\_JWR-ODB-02  
 =====

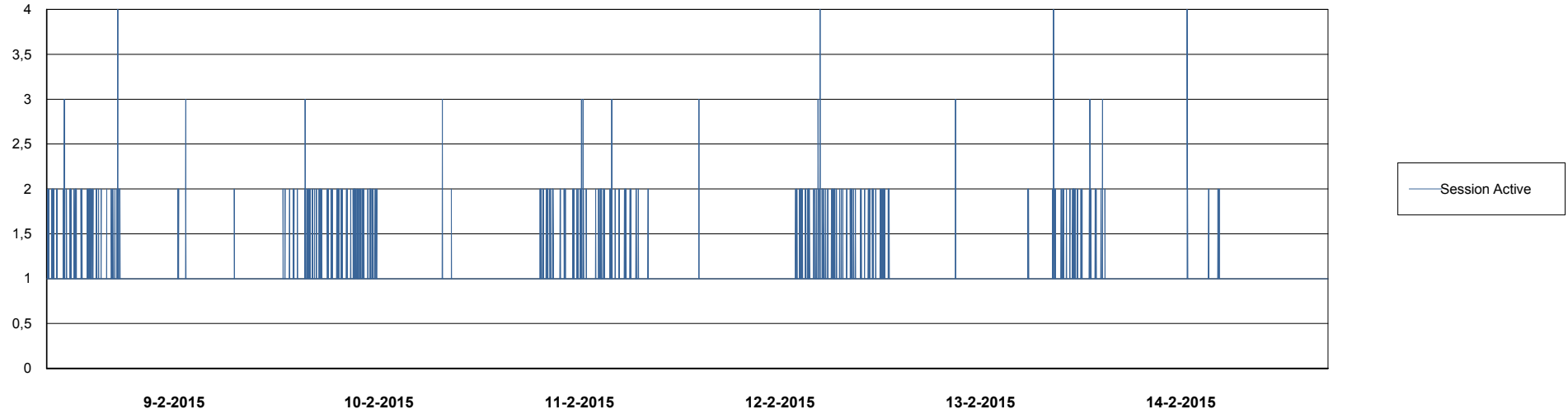
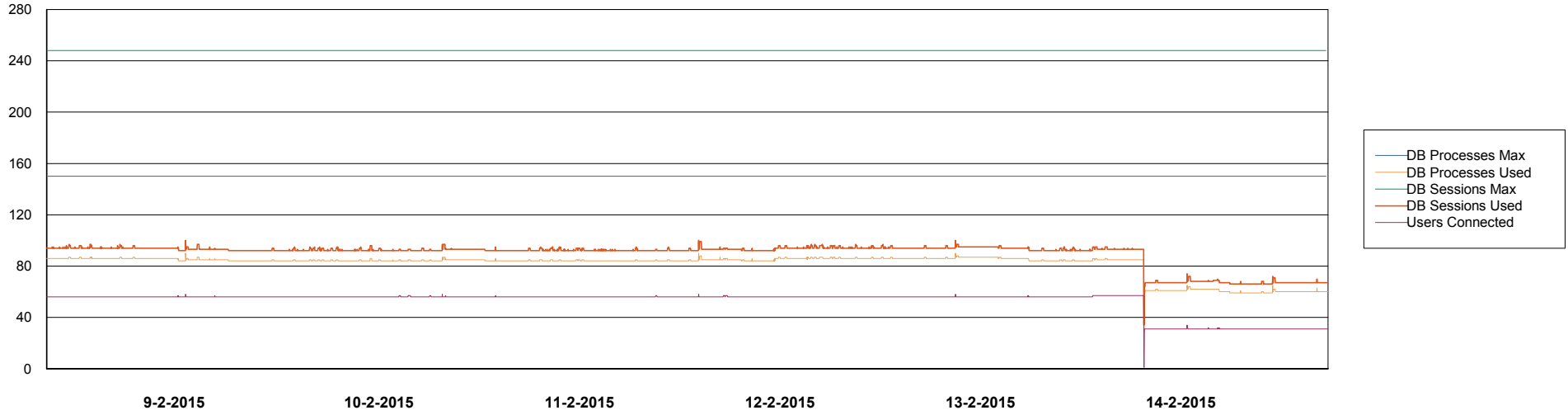
	Used disk space on / (GB)	Total disk space on / (GB)	Free disk space on / (GB)
14-2-2015	93	138	38
13-2-2015	93	138	38
12-2-2015	93	138	38
11-2-2015	93	138	38
10-2-2015	93	138	38
9-2-2015	93	138	37
8-2-2015	93	138	38

# Weekly SLA Customer Report

Customer JWR Production  
Database ID 43



## DATABASE PERFORMANCE JWRDB\_Production



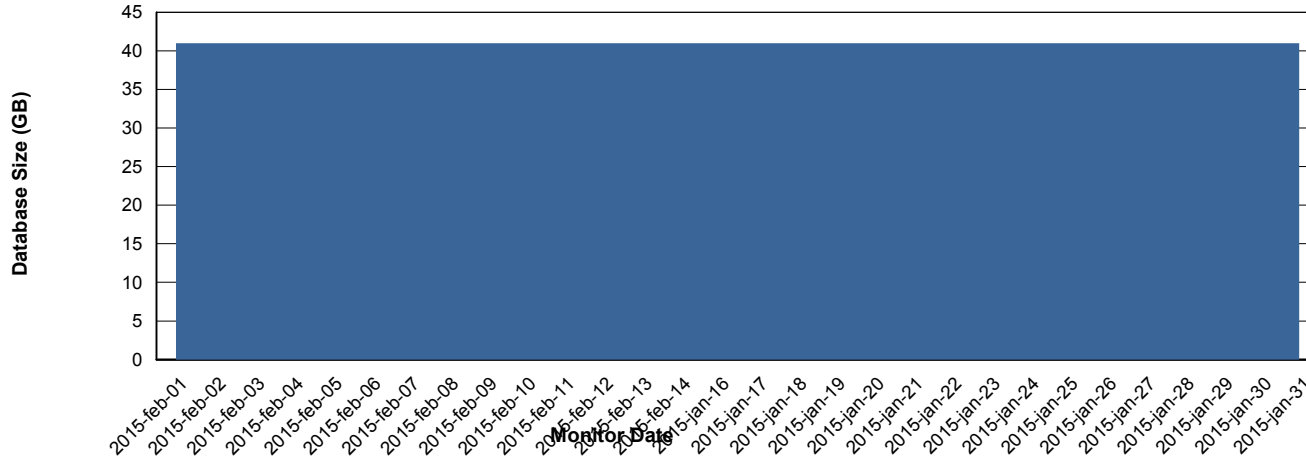
# Weekly SLA Customer Report

Customer JWR Production  
 Database ID 43



=====  
 DATABASE SIZE JWRDB\_Production  
 =====

## Database growth over last month



=====  
 DATABASE TABLESPACES JWRDB\_Production  
 =====

### TOTAL DATABASE SIZE PER TABLESPACE

Date	Tablespace Name	Filesize (Gb)	Usedsize (Gb)	Percentage free
14-2-2015	ABSDATA	18	12	33
	INDX	38	29	24
13-2-2015	ABSDATA	18	12	33
	INDX	38	29	24
12-2-2015	ABSDATA	18	12	33
	INDX	38	29	24
11-2-2015	ABSDATA	18	12	33
	INDX	38	29	24
10-2-2015	ABSDATA	18	12	33
	INDX	38	29	24
9-2-2015	ABSDATA	18	12	33
	INDX	38	29	24
8-2-2015	ABSDATA	18	12	33
	INDX	38	29	24

# Weekly SLA Customer Report

---

Customer     JWR Production  
Database ID   43



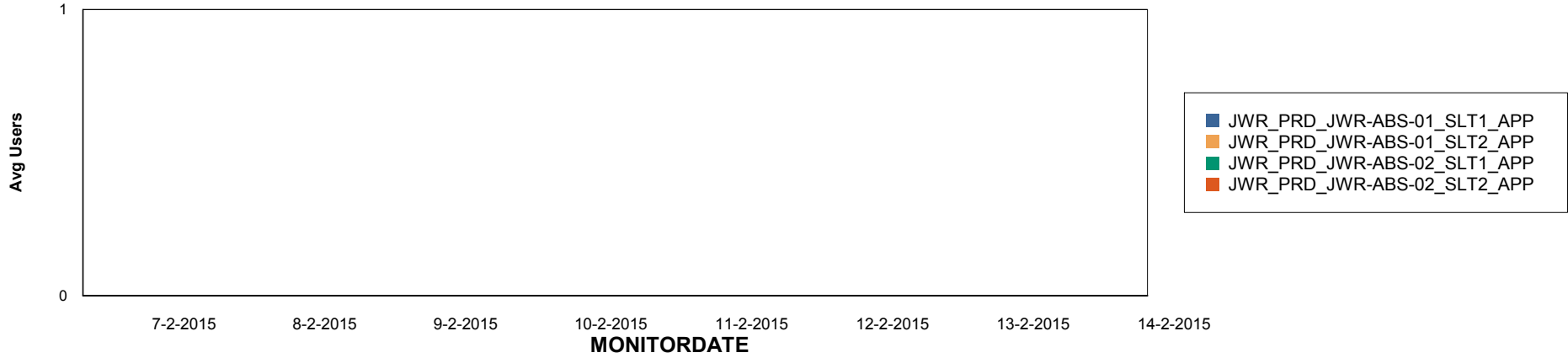
# Weekly SLA Customer Report

Customer JWR Production  
Database ID 43

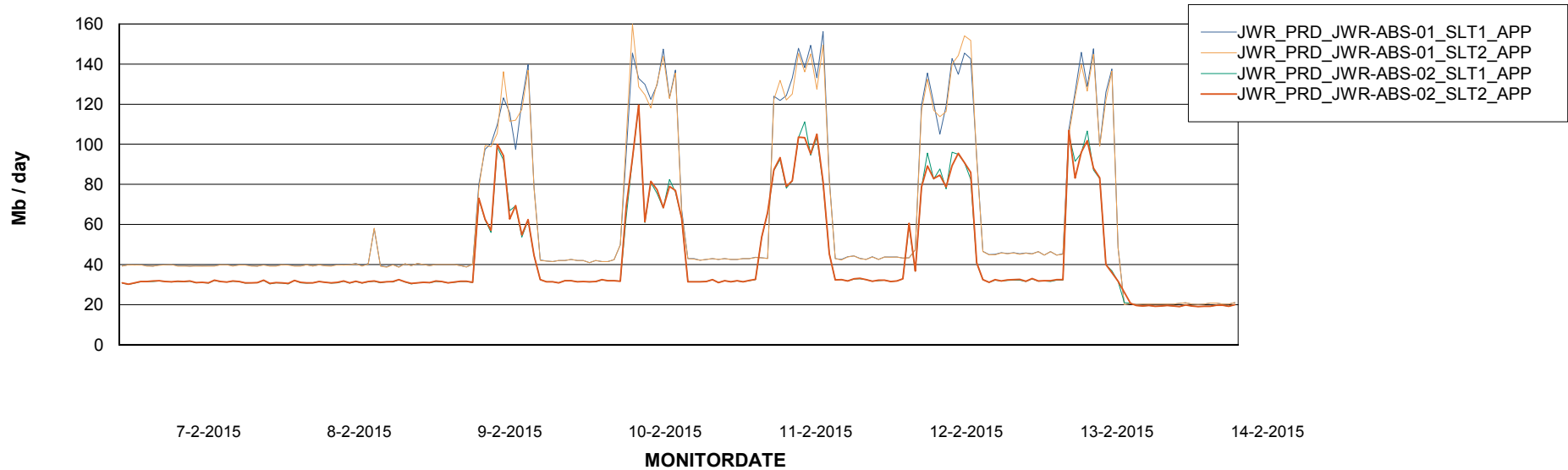


=====  
ABSolute Application Server Services  
=====

## Disaster per ABS Server



## Avg memory used per ABS Server Service



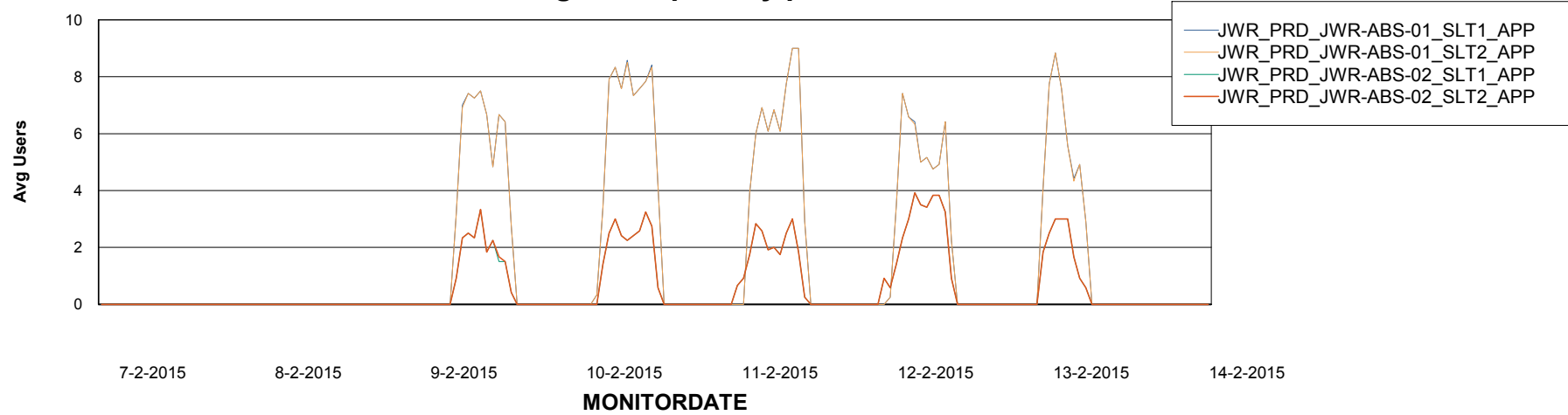
# Weekly SLA Customer Report

Customer JWR Production  
Database ID 43



=====  
ABSolute Application Server Services  
=====

### Avg users per day per ABS server



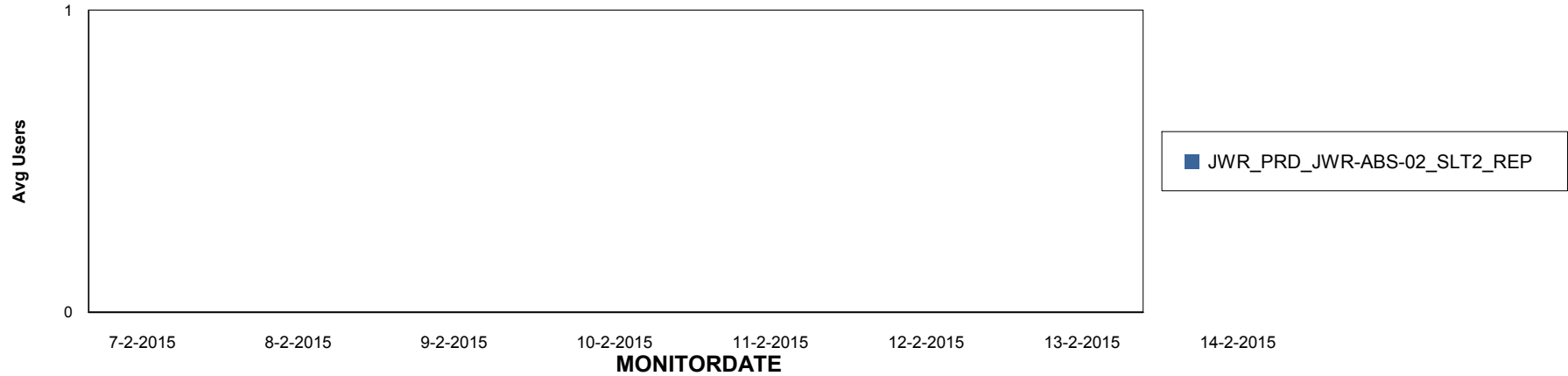
# Weekly SLA Customer Report

Customer JWR Production  
Database ID 43

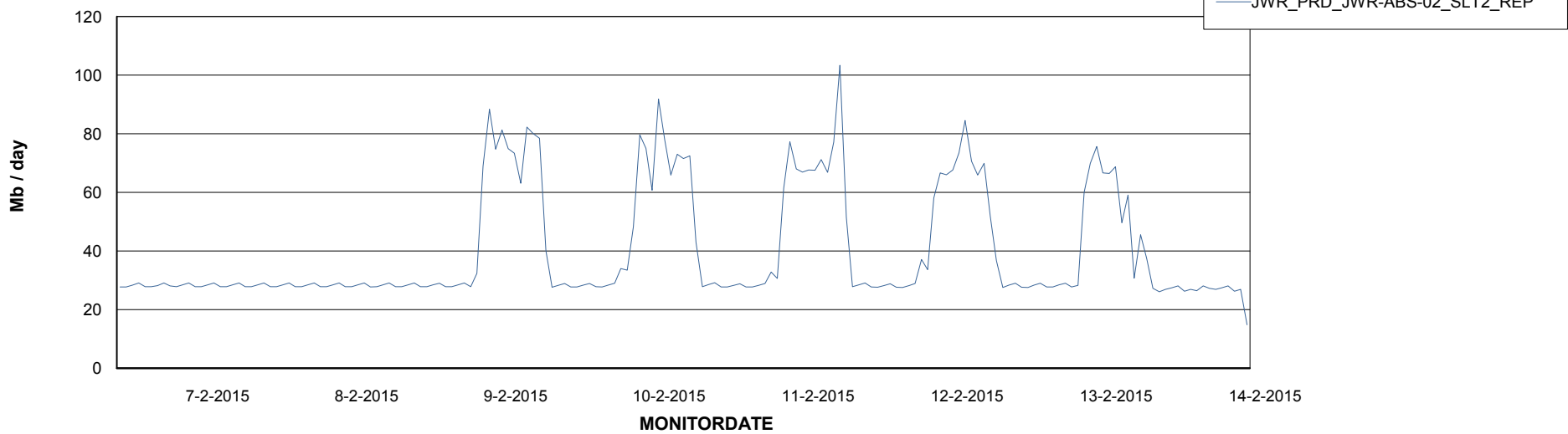


=====  
ABSolute Application ReportServer Services  
=====

## Disaster per ReportServer



## Avg memory used per ReportServer Service



# Weekly SLA Customer Report

Customer JWR Production  
Database ID 43



## Disaster per ABS component

