

## Weekly SLA Customer Report

Customer BOH\_Production  
 Database ID 55



=====  
 HARDDISK USAGE BOH\_PRD\_ORACLE1  
 =====

	Total disk space on C (GB)	Free disk space on C (GB)	Total disk space on D (GB)	Free disk space on D (GB)	Total disk space on E (GB)	Free disk space on E (GB)
14-2-2015	80	12	100	59	150	26
13-2-2015	80	12	100	59	150	29
12-2-2015	80	12	100	59	150	33
11-2-2015	80	12	100	59	150	37
10-2-2015	80	12	100	59	150	42
9-2-2015	80	13	100	59	150	23
8-2-2015	80	13	100	59	150	22

=====  
 HARDDISK USAGE BOH\_PRD\_ORACLE2  
 =====

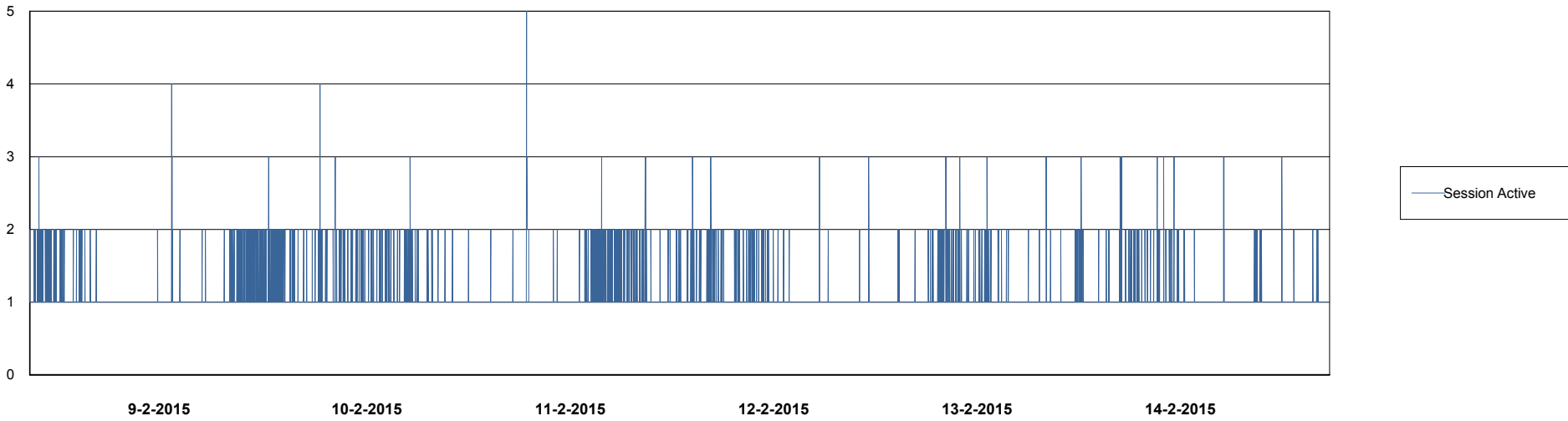
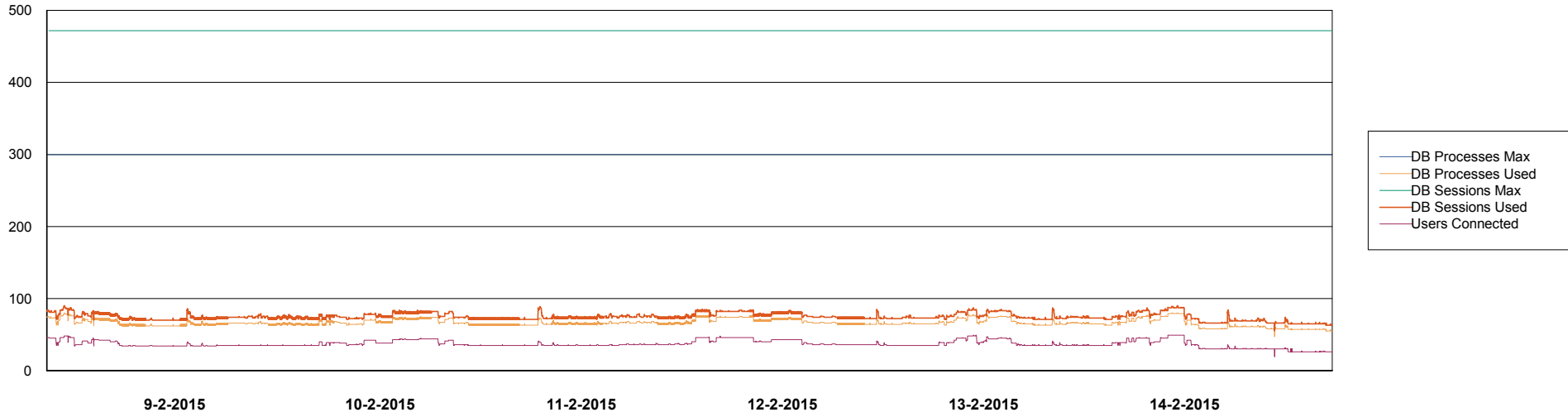
	Total disk space on C (GB)	Free disk space on C (GB)	Total disk space on D (GB)	Free disk space on D (GB)	Total disk space on E (GB)	Free disk space on E (GB)
14-2-2015	67	16	227	187	329	252
13-2-2015	67	17	227	187	329	253
12-2-2015	67	17	227	187	329	255
11-2-2015	67	17	227	187	329	256
10-2-2015	67	18	227	187	329	260
9-2-2015	67	18	227	187	329	239
8-2-2015	67	18	227	187	329	236

# Weekly SLA Customer Report

Customer BOH\_Production  
Database ID 55



DATABASE PERFORMANCE BOHDB\_Production

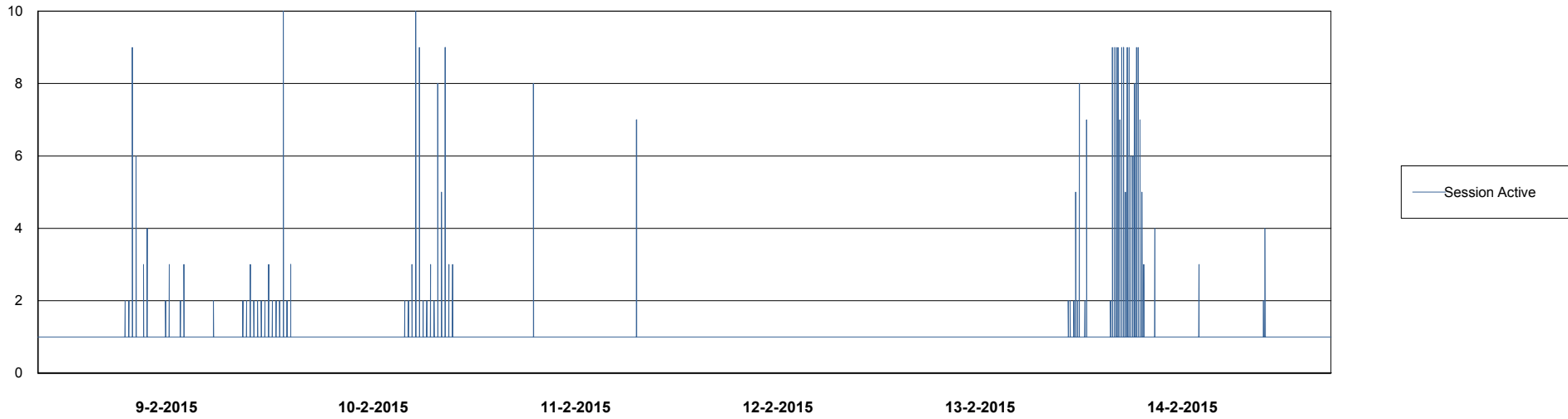
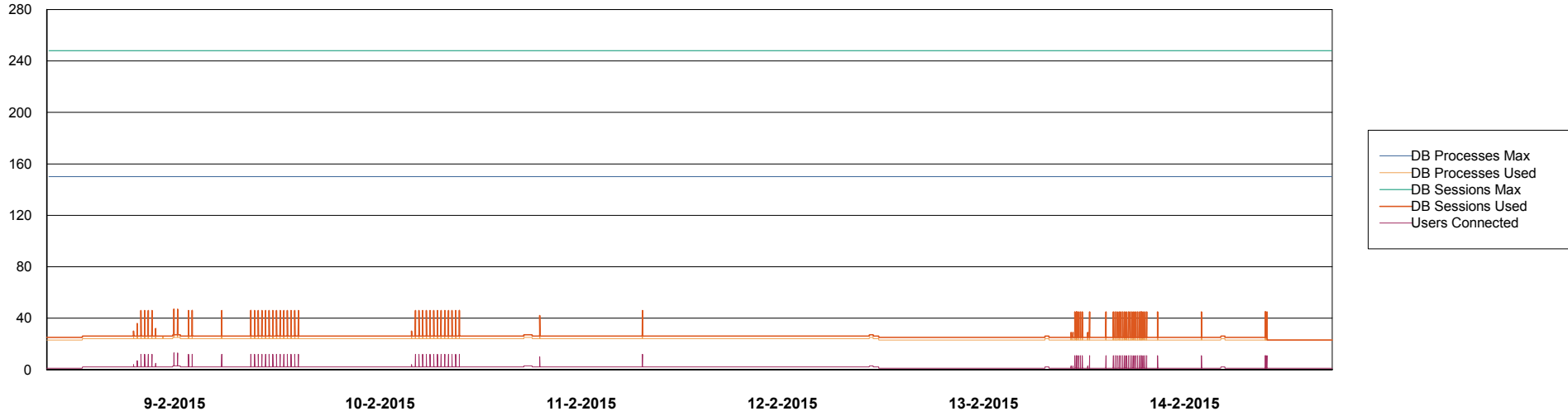


# Weekly SLA Customer Report

Customer BOH\_Production  
Database ID 55



DATABASE PERFORMANCE BOHDB\_Standby



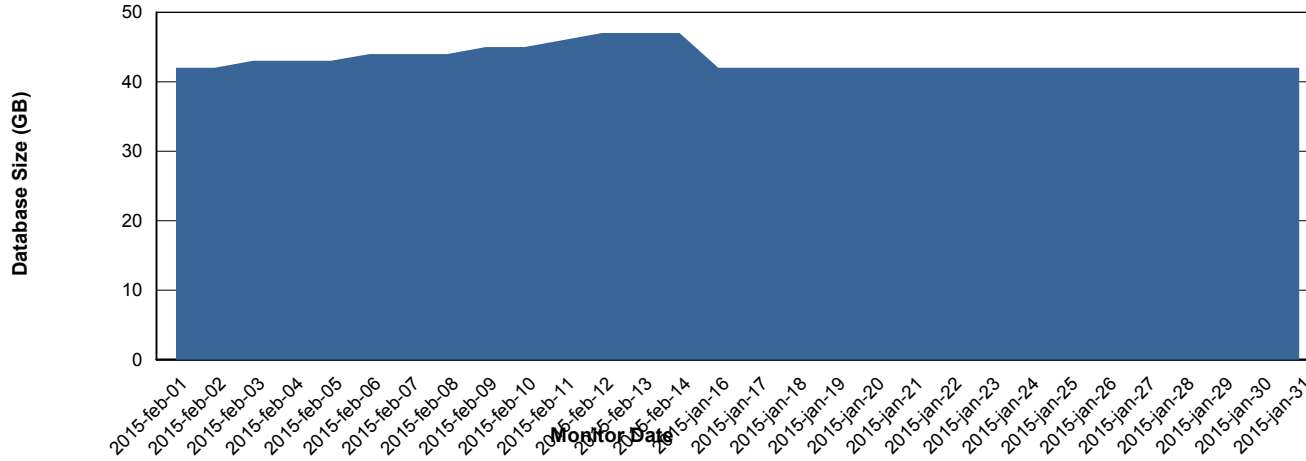
# Weekly SLA Customer Report

Customer BOH\_Production  
 Database ID 55



=====  
 DATABASE SIZE BOHDB\_Production  
 =====

## Database growth over last month



=====  
 DATABASE TABLESPACES BOHDB\_Production  
 =====

### TOTAL DATABASE SIZE PER TABLESPACE

Date	Tablespace Name	Filesize (Gb)	Usedsize (Gb)	Percentage free
14-2-2015	ABSDATA	18	16	11
	INDX	40	29	28
13-2-2015	ABSDATA	17	16	6
	INDX	40	29	28
12-2-2015	ABSDATA	17	16	6
	INDX	40	29	28
11-2-2015	ABSDATA	17	16	6
	INDX	40	29	28
10-2-2015	ABSDATA	17	15	12
	INDX	40	29	28
9-2-2015	ABSDATA	16	15	6
	INDX	40	29	28
8-2-2015	ABSDATA	16	15	6
	INDX	40	29	28

# Weekly SLA Customer Report

Customer BOH\_Production  
Database ID 55



=====  
STANDBY DATABASE HEALTH BOH\_Production  
=====

### Recovery lag for last 7 days

