

# Weekly SLA Customer Report

Customer AUJ\_Production  
Database ID 41



=====  
HARDDISK USAGE AUJ\_PRD\_ORACLE\_BI1  
=====

	Used disk space on \$1 (GB)	Total disk space on \$1 (GB)	Free disk space on \$1 (GB)
14-2-2015	451	526	47
13-2-2015	444	526	55
12-2-2015	444	526	55
11-2-2015	439	526	60
10-2-2015	432	526	66
9-2-2015	452	526	47
8-2-2015	461	526	37

=====  
HARDDISK USAGE AUJ\_PRD\_ORACLE1  
=====

	Used disk space on \$1 (GB)	Total disk space on \$1 (GB)	Free disk space on \$1 (GB)
14-2-2015	133	290	67
13-2-2015	134	290	67
12-2-2015	134	290	67
11-2-2015	134	290	67
10-2-2015	134	290	67
9-2-2015	133	290	67
8-2-2015	132	290	67

# Weekly SLA Customer Report

Customer AUJ\_Production  
Database ID 41



HARDDISK USAGE AUJ\_PRD\_ORACLE2

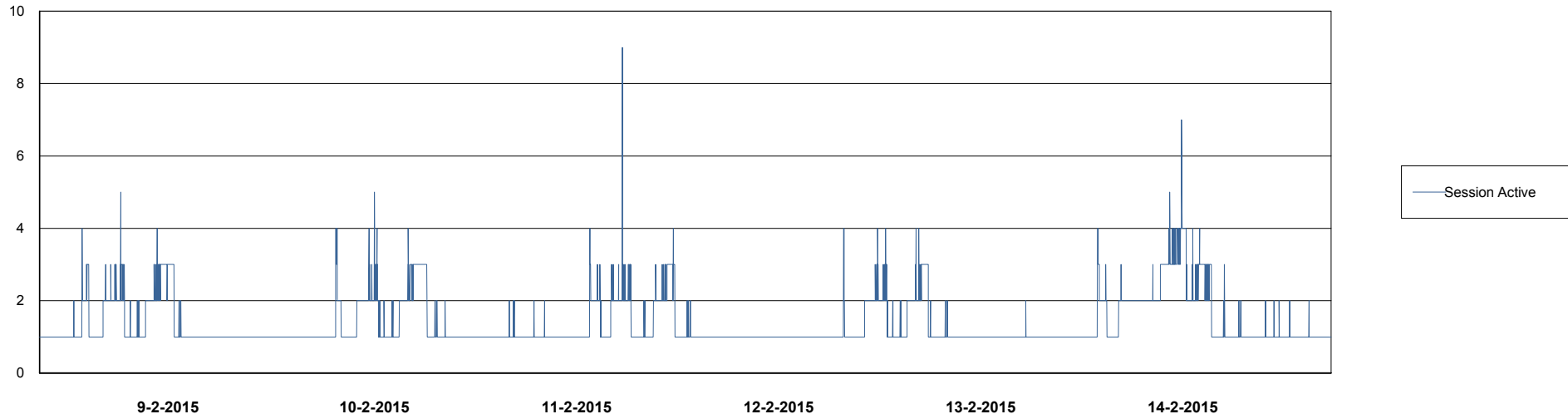
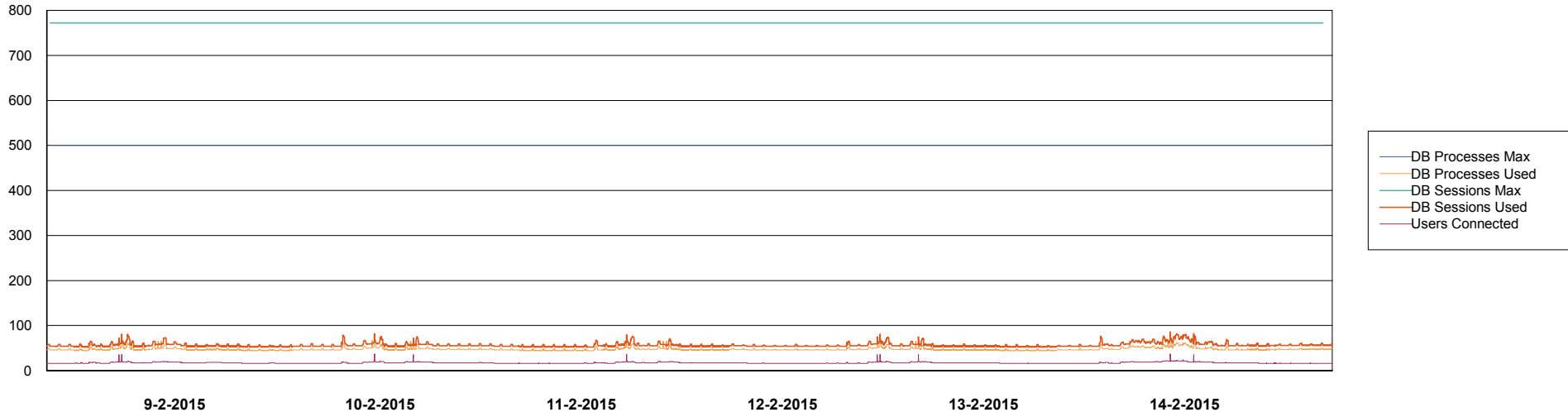
	Used disk space on \$1 (GB)	Total disk space on \$1 (GB)	Free disk space on \$1 (GB)
14-2-2015	67	174	98
13-2-2015	68	174	98
12-2-2015	68	174	98
11-2-2015	68	174	98
10-2-2015	68	174	98
9-2-2015	66	174	98
8-2-2015	65	174	98

# Weekly SLA Customer Report

Customer AUJ\_Production  
Database ID 41



DATABASE PERFORMANCE AUJDB\_BI



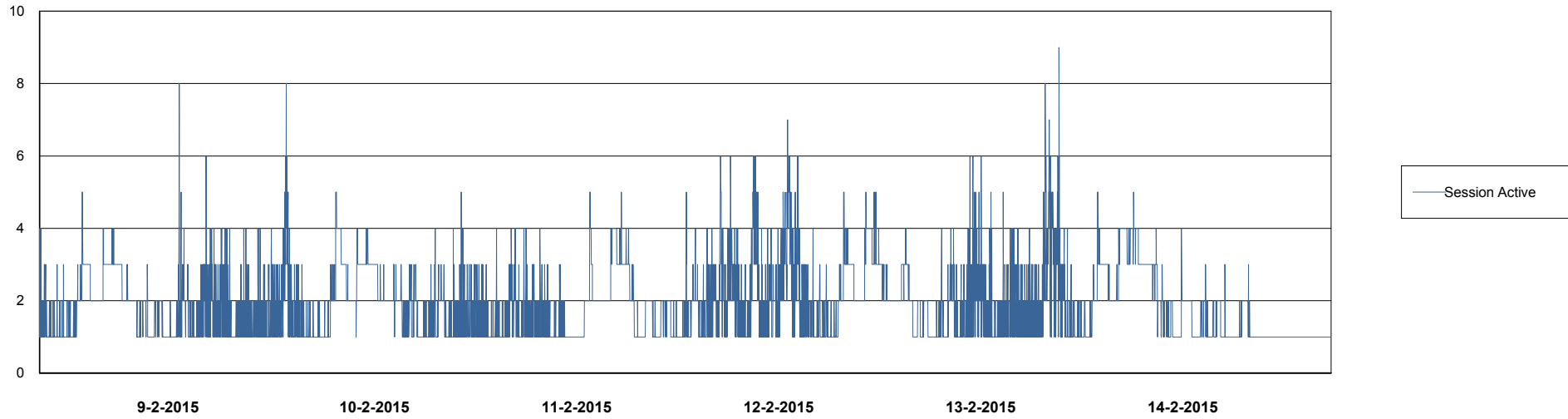
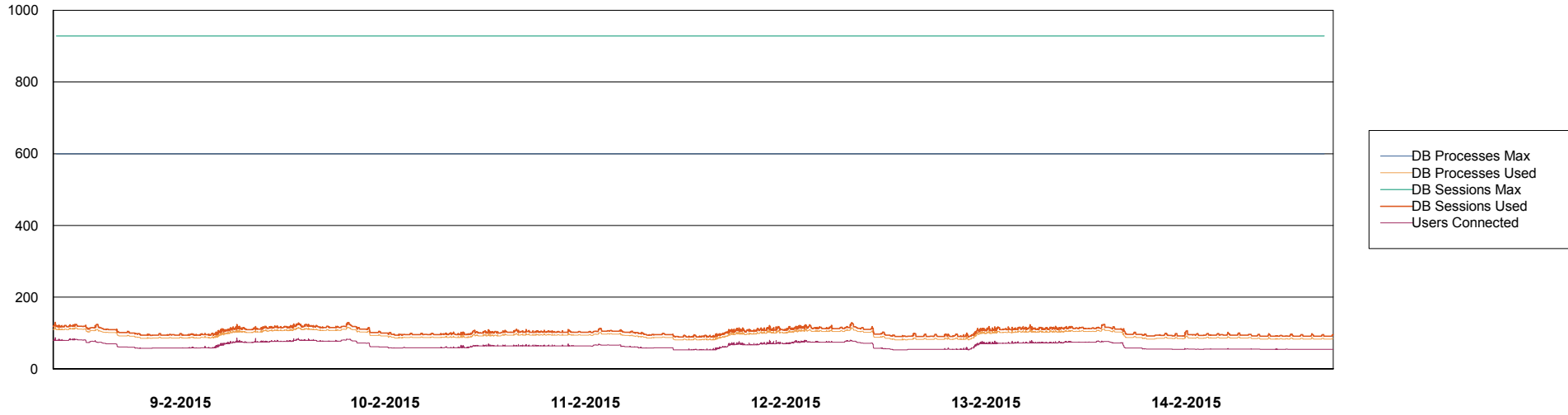
# Weekly SLA Customer Report

Customer AUJ\_Production  
Database ID 41



## DATABASE PERFORMANCE

AUJDB\_Production



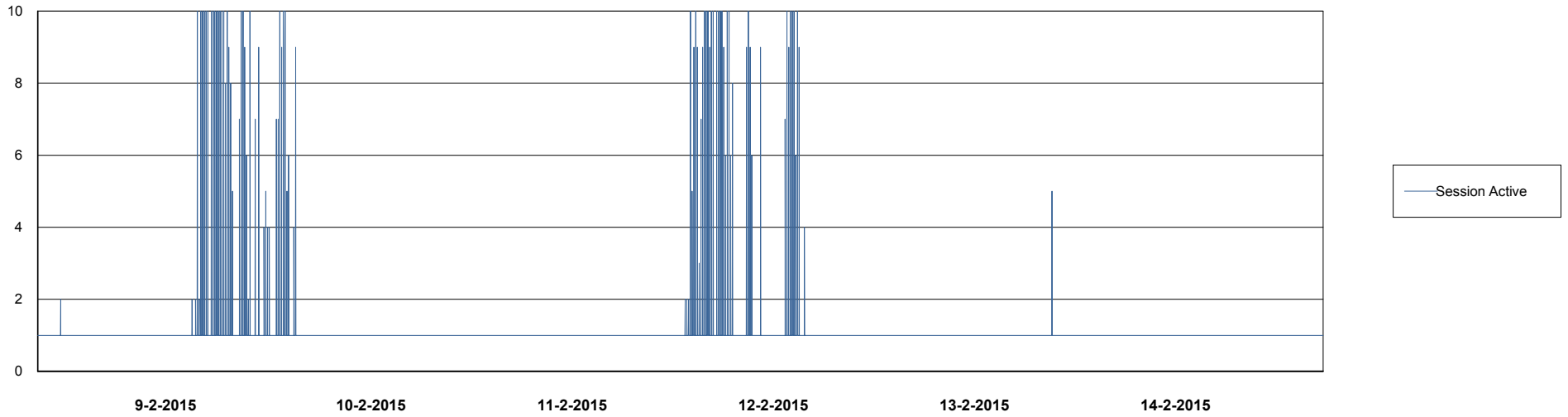
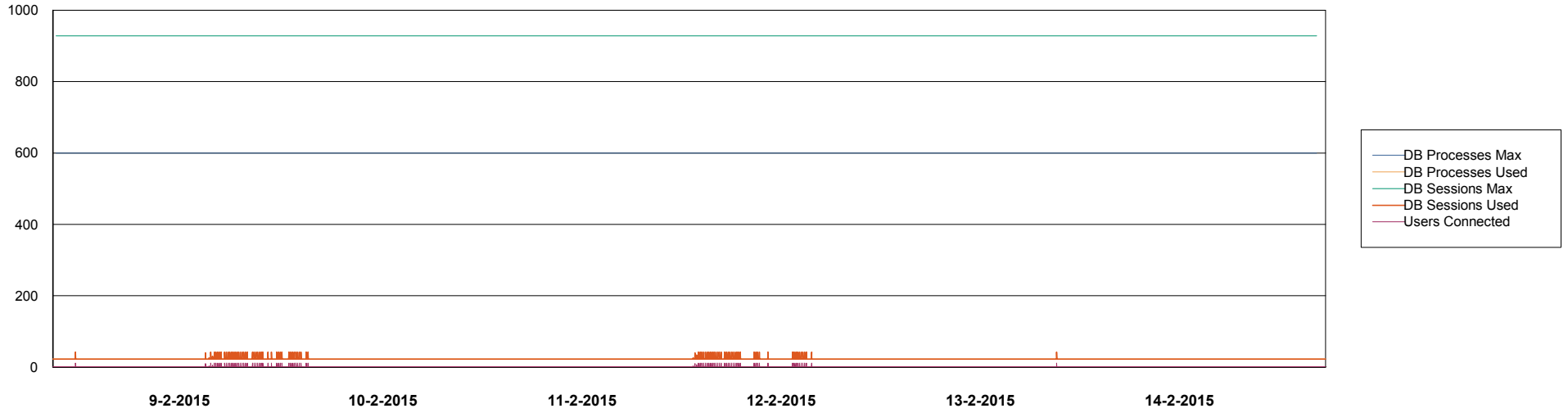
# Weekly SLA Customer Report

Customer AUJ\_Production  
Database ID 41



## DATABASE PERFORMANCE

AUJDB\_Standby

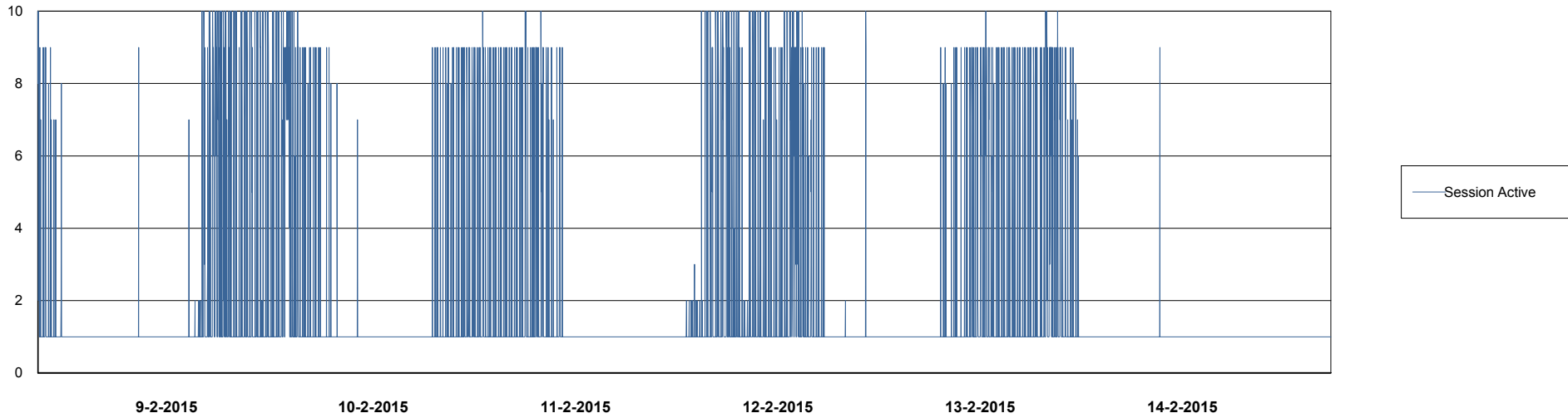
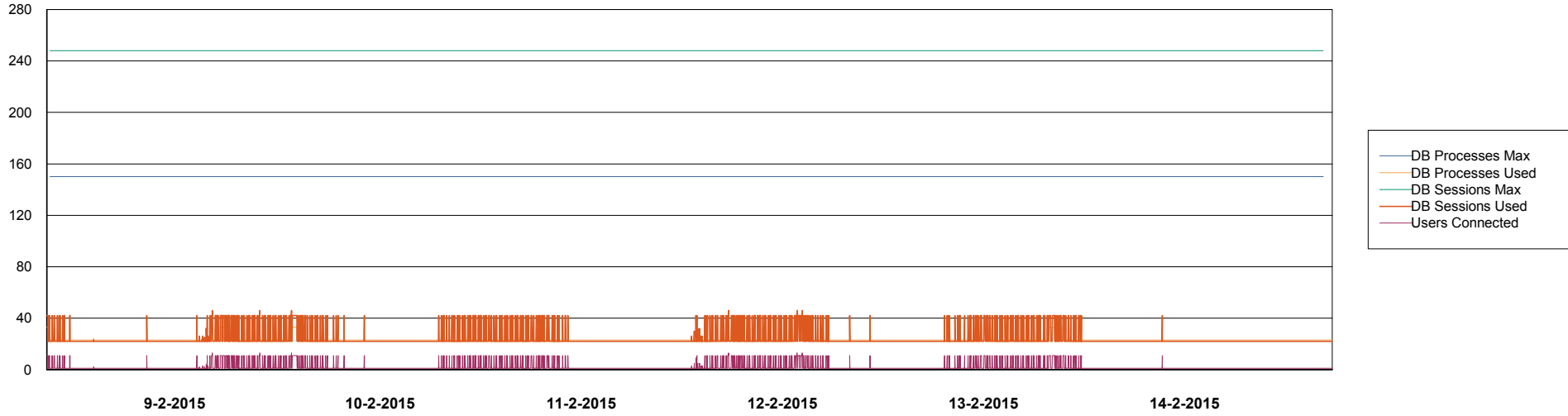


# Weekly SLA Customer Report

Customer AUJ\_Production  
Database ID 41



DATABASE PERFORMANCE AUJDB3\_Standby



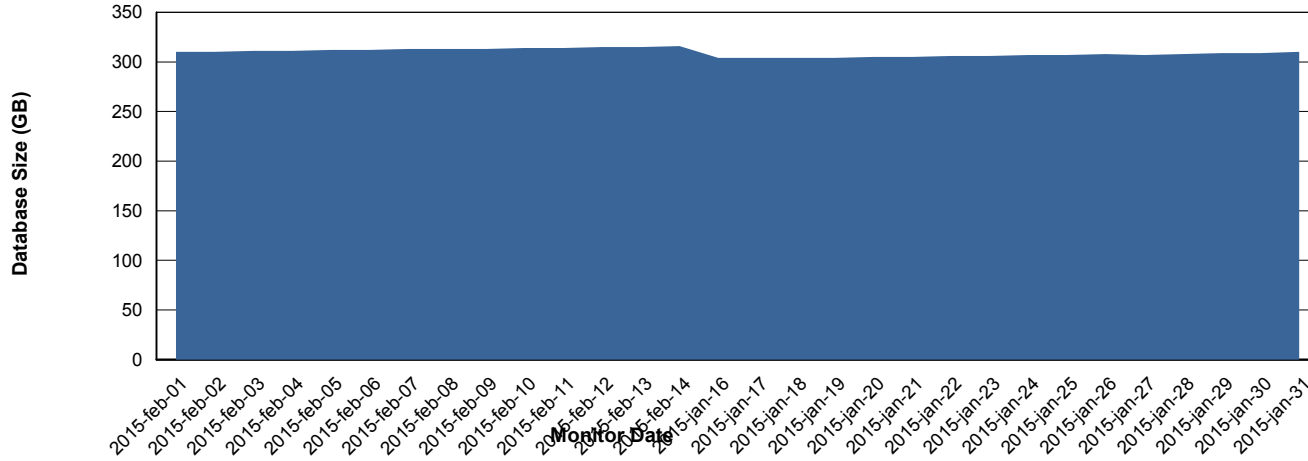
# Weekly SLA Customer Report

Customer AUJ\_Production  
Database ID 41



=====  
DATABASE SIZE AUJDB\_Production  
=====  
=====

## Database growth over last month



# Weekly SLA Customer Report

Customer AUJ\_Production  
 Database ID 41



=====  
 DATABASE TABLESPACES AUJDB\_BI  
 =====

TOTAL DATABASE SIZE PER TABLESPACE

Date	Tablespace Name	Filesize (Gb)	Usedsize (Gb)	Percentage free
14-2-2015	ABSDATA	112	82	27
	INDX	187	143	24
13-2-2015	ABSDATA	112	82	27
	INDX	187	143	24
12-2-2015	ABSDATA	112	82	27
	INDX	187	143	24
11-2-2015	ABSDATA	112	82	27
	INDX	187	143	24
10-2-2015	ABSDATA	112	82	27
	INDX	187	143	24
9-2-2015	ABSDATA	112	82	27
	INDX	187	143	24
8-2-2015	ABSDATA	112	82	27
	INDX	187	143	24

# Weekly SLA Customer Report

Customer AUJ\_Production  
 Database ID 41



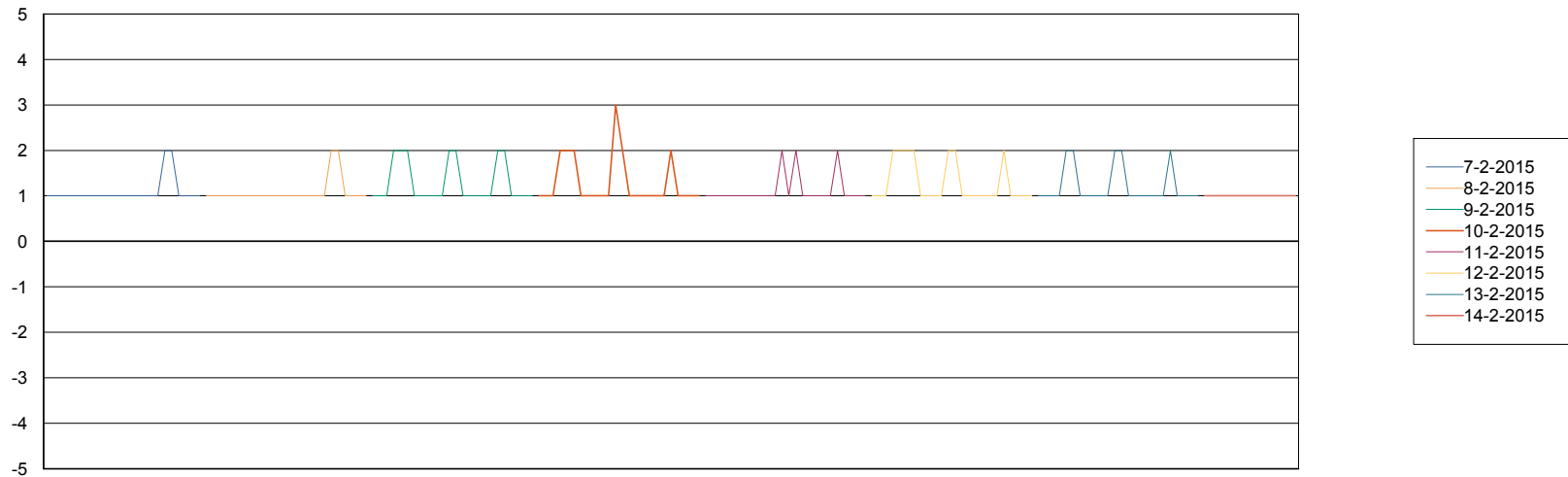
=====  
 DATABASE TABLESPACES AUJDB\_Production  
 =====

TOTAL DATABASE SIZE PER TABLESPACE

Date	Tablespace Name	Filesize (Gb)	Usedsize (Gb)	Percentage free
14-2-2015	ABSDATA	168	135	20
	INDX	215	179	17
13-2-2015	ABSDATA	168	135	20
	INDX	215	179	17
12-2-2015	ABSDATA	168	135	20
	INDX	215	178	17
11-2-2015	ABSDATA	168	135	20
	INDX	215	178	17
10-2-2015	ABSDATA	168	134	20
	INDX	215	178	17
9-2-2015	ABSDATA	168	134	20
	INDX	215	177	18
8-2-2015	ABSDATA	160	134	16
	INDX	206	177	14

=====  
 STANDBY DATABASE HEALTH AUJ\_Production  
 =====

Recovery lag for last 7 days



# Weekly SLA Customer Report

---

Customer AUJ\_Production  
Database ID 41

