

Weekly SLA Customer Report

Customer PCO Production
 Database ID 44



=====
 HARDDISK USAGE PCO_PRD_ORACLE1
 =====

	Total disk space on C (GB)	Free disk space on C (GB)	Total disk space on D (GB)	Free disk space on D (GB)
7-2-2015	279	217	838	142
6-2-2015	279	217	838	144
5-2-2015	279	217	838	149
4-2-2015	279	217	838	157
3-2-2015	279	217	838	174
2-2-2015	279	217	838	164
1-2-2015	279	217	838	142

=====
 HARDDISK USAGE PCO_PRD_ORACLE2
 =====

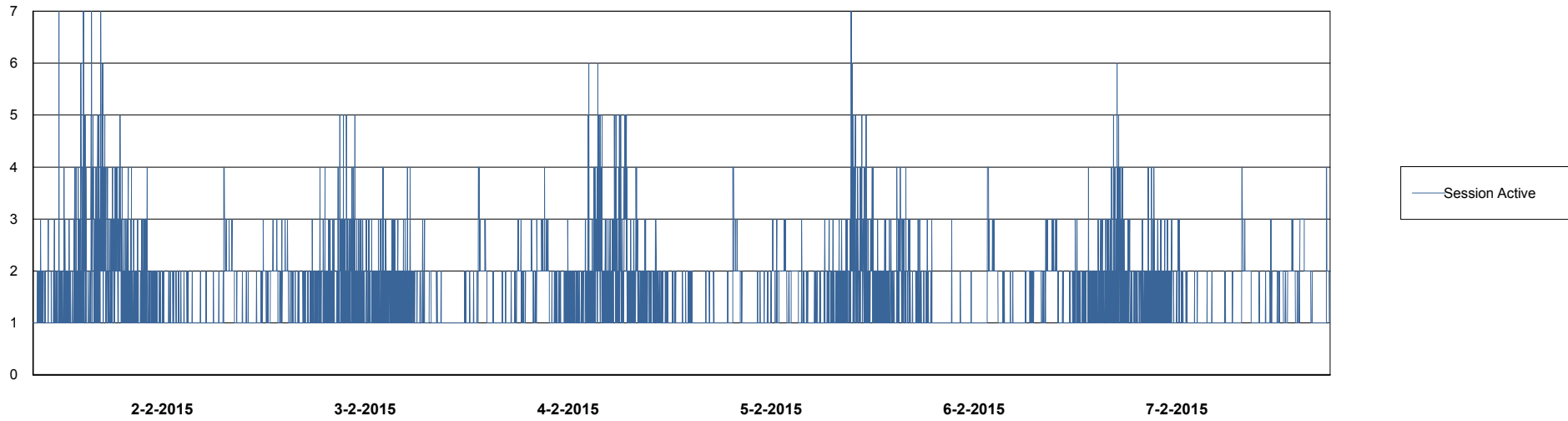
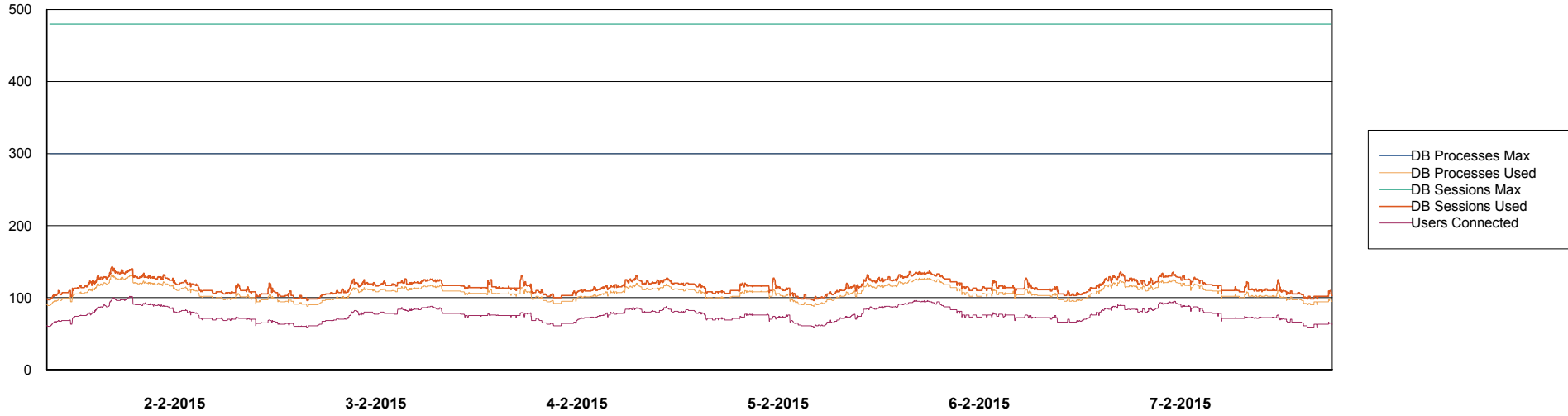
	Total disk space on C (GB)	Free disk space on C (GB)	Total disk space on D (GB)	Free disk space on D (GB)
7-2-2015	279	212	838	289
6-2-2015	279	213	838	291
5-2-2015	279	213	838	294
4-2-2015	279	213	838	296
3-2-2015	279	214	838	299
2-2-2015	279	215	838	302
1-2-2015	279	215	838	303

Weekly SLA Customer Report

Customer PCO Production
Database ID 44



DATABASE PERFORMANCE PCODB_Production

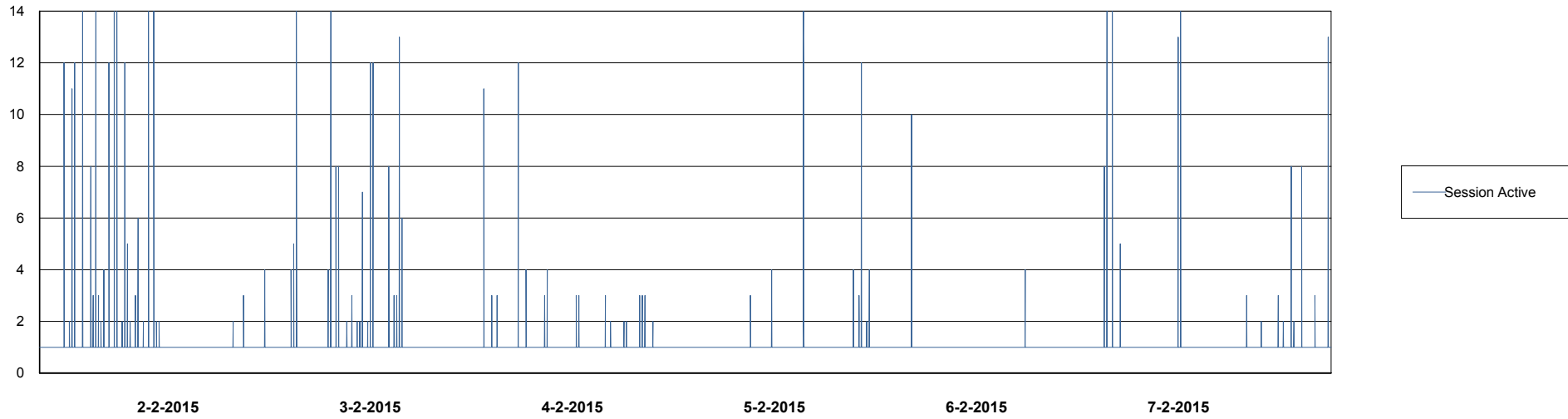
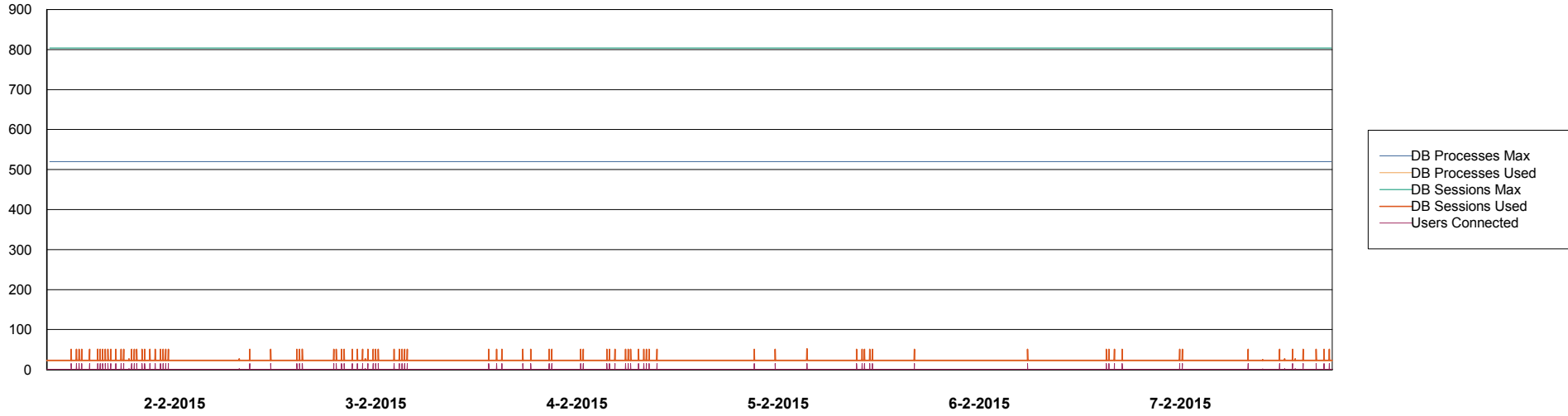


Weekly SLA Customer Report

Customer PCO Production
Database ID 44



DATABASE PERFORMANCE PCODB_Standby



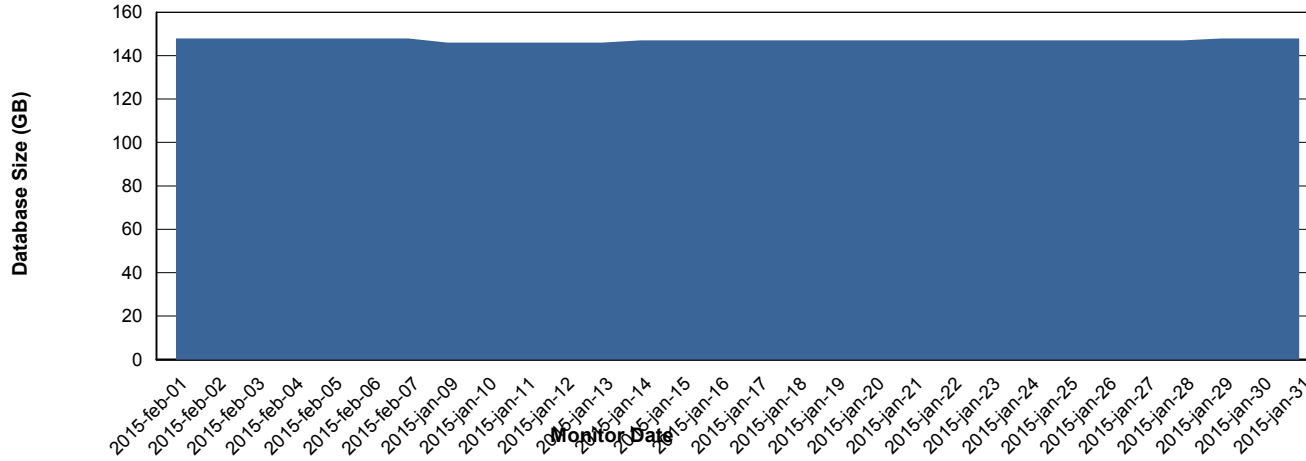
Weekly SLA Customer Report

Customer PCO Production
 Database ID 44



=====
 DATABASE SIZE PCODB_Production
 =====

Database growth over last month



=====
 DATABASE TABLESPACES PCODB_Production
 =====

TOTAL DATABASE SIZE PER TABLESPACE

Date	Tablespace Name	Filesize (Gb)	Usedsize (Gb)	Percentage free
7-2-2015	ABSDATA	78	60	23
	INDX	109	87	20
6-2-2015	ABSDATA	78	60	23
	INDX	109	87	20
5-2-2015	ABSDATA	78	60	23
	INDX	109	87	20
4-2-2015	ABSDATA	78	60	23
	INDX	109	86	21
3-2-2015	ABSDATA	78	60	23
	INDX	109	86	21
2-2-2015	ABSDATA	78	60	23
	INDX	109	86	21
1-2-2015	ABSDATA	78	60	23
	INDX	109	86	21

Weekly SLA Customer Report

Customer PCO Production
Database ID 44



=====
STANDBY DATABASE HEALTH PCO Production
=====

Recovery lag for last 7 days

