

# Weekly SLA Customer Report

Customer NIX\_Production  
Database ID 51



=====  
HARDDISK USAGE NIX\_PRD\_ABSAPP1  
=====

	Total disk space on C (GB)	Free disk space on C (GB)
7-2-2015	136	90
6-2-2015	136	90
5-2-2015	136	90
4-2-2015	136	90
3-2-2015	136	90
2-2-2015	136	90
1-2-2015	136	90

=====  
HARDDISK USAGE NIX\_PRD\_ABSWEB1  
=====

	Total disk space on C (GB)	Free disk space on C (GB)	Total disk space on D (GB)
7-2-2015	930	747	3
6-2-2015	930	747	3
5-2-2015	930	747	3
4-2-2015	930	747	3
3-2-2015	930	747	3
2-2-2015	930	746	3
1-2-2015	930	746	3

## Weekly SLA Customer Report

Customer      NIX\_Production  
 Database ID    51



=====  
 HARDDISK USAGE    NIX\_PRD\_ORACLE\_B11  
 =====

	Total disk space on C (GB)	Free disk space on C (GB)	Total disk space on D (GB)	Free disk space on D (GB)	Total disk space on E (GB)	Free disk space on E (GB)
7-2-2015	99	54	279	169	99	29
6-2-2015	99	54	279	169	99	29
5-2-2015	99	54	279	169	99	29
4-2-2015	99	54	279	169	99	29
3-2-2015	99	54	279	169	99	29
2-2-2015	99	54	279	169	99	28
1-2-2015	99	54	279	169	99	29

=====  
 HARDDISK USAGE    NIX\_PRD\_ORCDB1  
 =====

	Total disk space on C (GB)	Free disk space on C (GB)	Total disk space on D (GB)	Free disk space on D (GB)	Total disk space on E (GB)	Free disk space on E (GB)
7-2-2015	136	68	136	27	136	49
6-2-2015	136	68	136	27	136	50
5-2-2015	136	67	136	27	136	50
4-2-2015	136	68	136	27	136	50
3-2-2015	136	68	136	27	136	51
2-2-2015	136	68	136	27	136	51
1-2-2015	136	68	136	27	136	51

## Weekly SLA Customer Report

Customer      NIX\_Production  
 Database ID    51



=====  
 HARDDISK USAGE    NIX\_PRD\_ORCDB2  
 =====

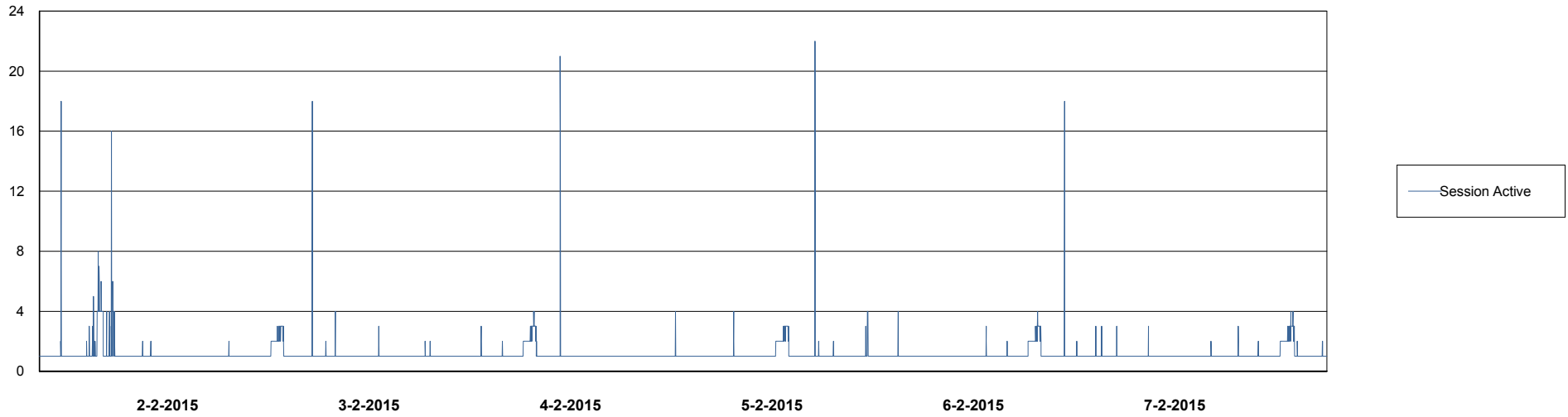
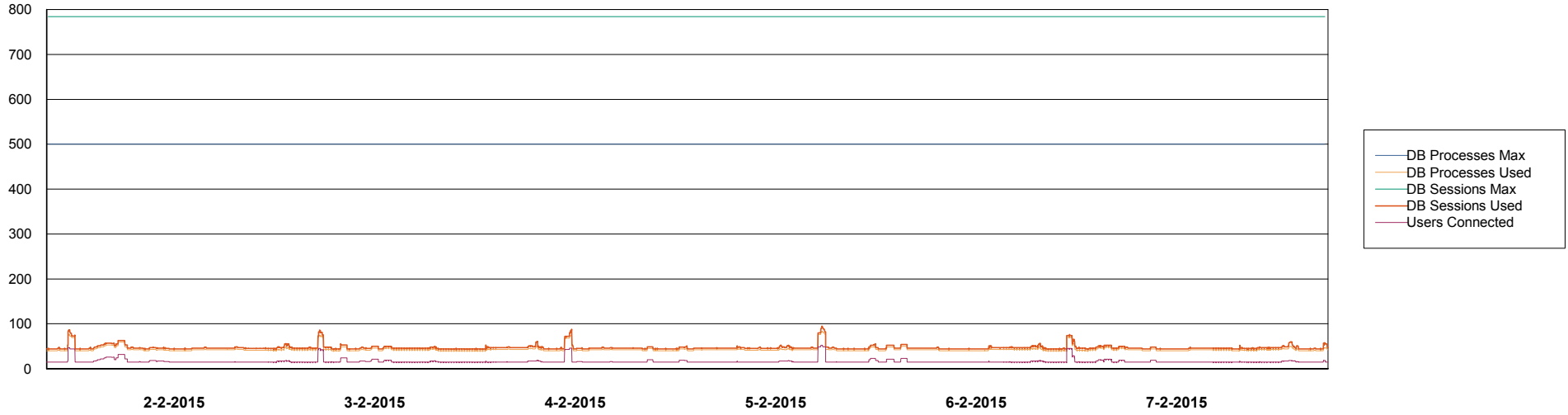
	Total disk space on C (GB)	Free disk space on C (GB)	Total disk space on D (GB)	Free disk space on D (GB)	Total disk space on E (GB)	Free disk space on E (GB)
7-2-2015	279	67	279	51	279	118
6-2-2015	279	67	279	51	279	144
5-2-2015	279	68	279	51	279	151
4-2-2015	279	68	279	51	279	144
3-2-2015	279	68	279	51	279	140
2-2-2015	279	68	279	51	279	111
1-2-2015	279	68	279	51	279	136

# Weekly SLA Customer Report

Customer NIX\_Production  
Database ID 51



=====  
DATABASE PERFORMANCE      NIXDB\_BI      =====  
=====



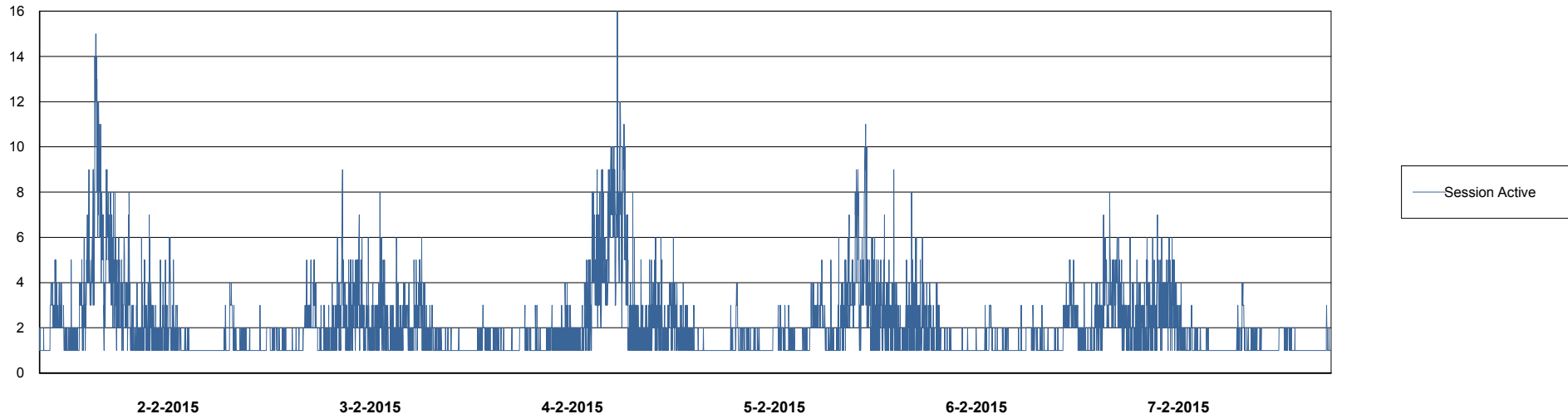
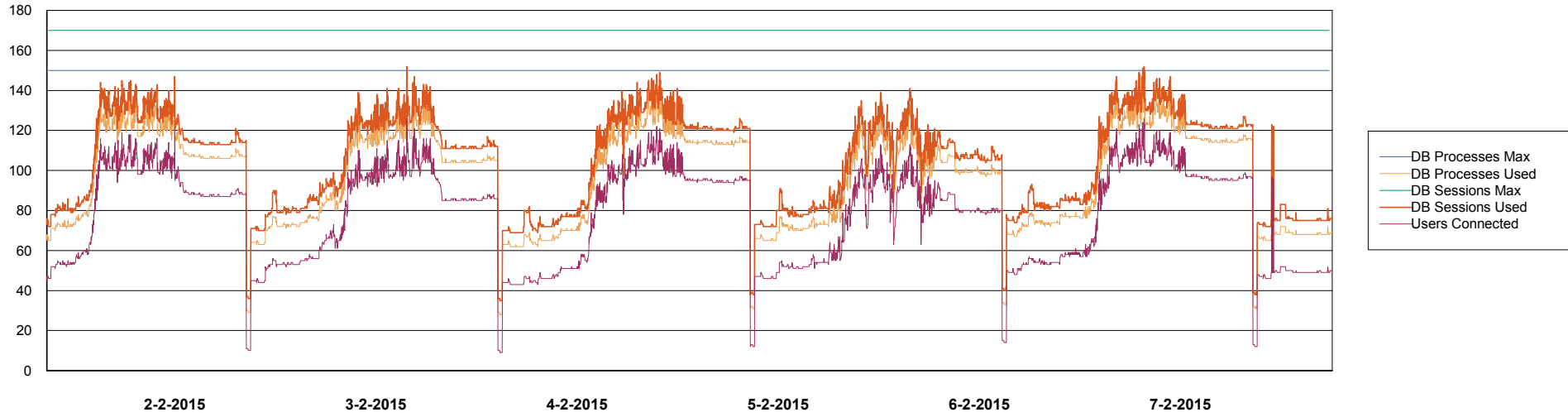
# Weekly SLA Customer Report

Customer NIX\_Production  
Database ID 51



## DATABASE PERFORMANCE

NIXDB\_Production

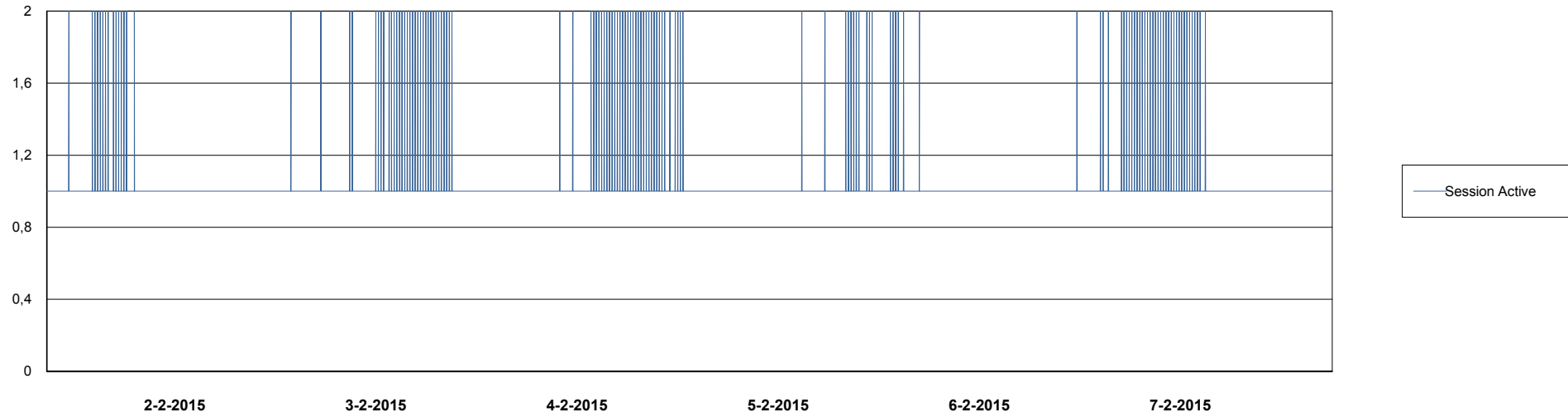
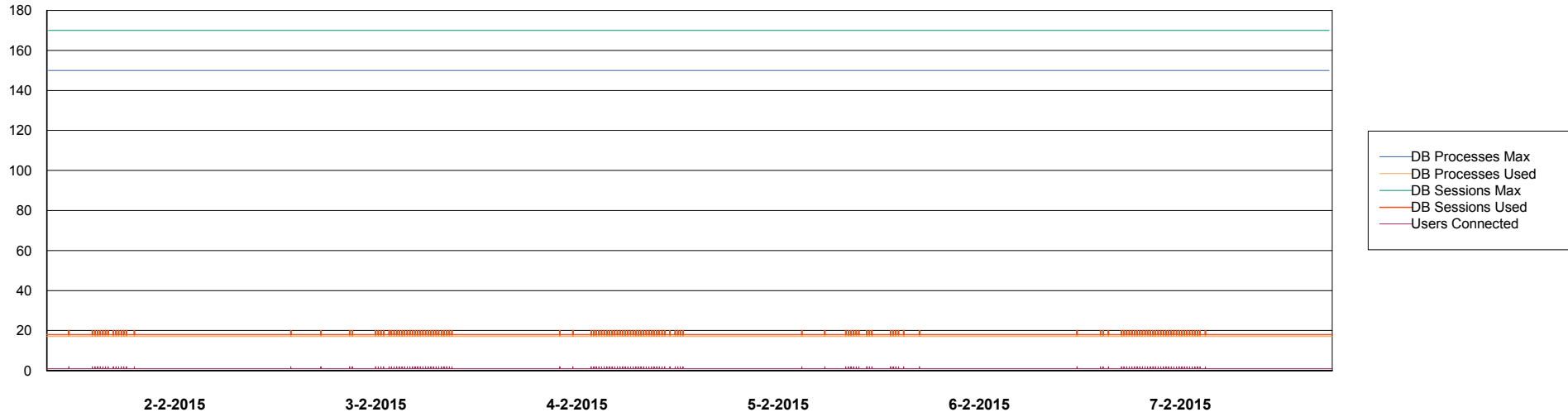


# Weekly SLA Customer Report

Customer NIX\_Production  
Database ID 51



DATABASE PERFORMANCE NIXDB\_Standby



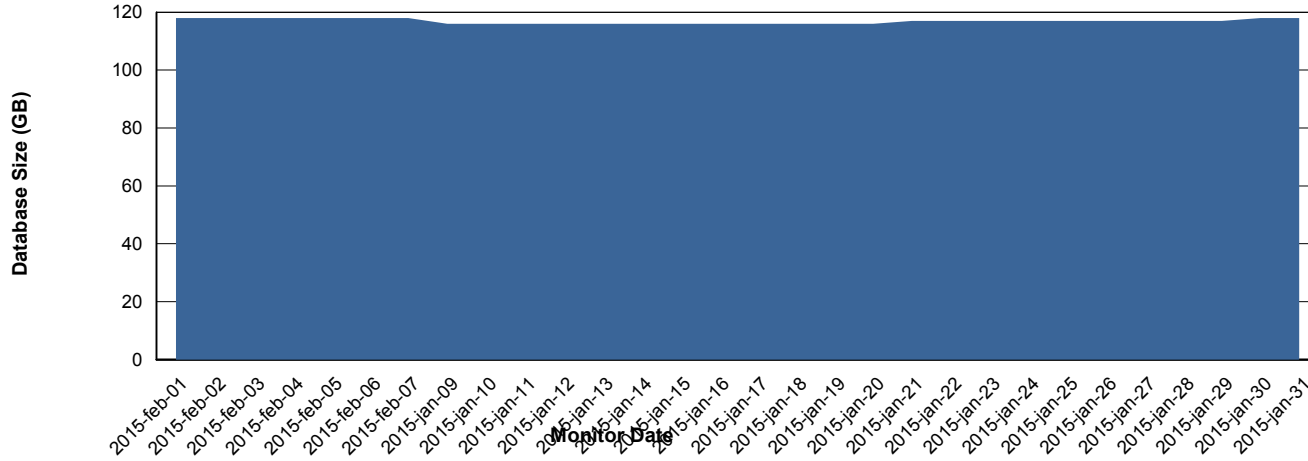
# Weekly SLA Customer Report

Customer NIX\_Production  
Database ID 51



=====  
DATABASE SIZE NIXDB\_Production  
=====

## Database growth over last month



# Weekly SLA Customer Report

Customer NIX\_Production  
Database ID 51



=====  
DATABASE TABLESPACES NIXDB\_BI  
=====

TOTAL DATABASE SIZE PER TABLESPACE

Date	Tablespace Name	Filesize (Gb)	Usedsize (Gb)	Percentage free
7-2-2015	ABSDATA	28	19	32
	INDX	44	30	32
6-2-2015	ABSDATA	28	19	32
	INDX	44	30	32
5-2-2015	ABSDATA	28	19	32
	INDX	44	30	32
4-2-2015	ABSDATA	28	19	32
	INDX	44	30	32
3-2-2015	ABSDATA	28	19	32
	INDX	44	30	32
2-2-2015	ABSDATA	28	19	32
	INDX	44	30	32
1-2-2015	ABSDATA	28	19	32
	INDX	44	30	32

# Weekly SLA Customer Report

Customer NIX\_Production  
 Database ID 51



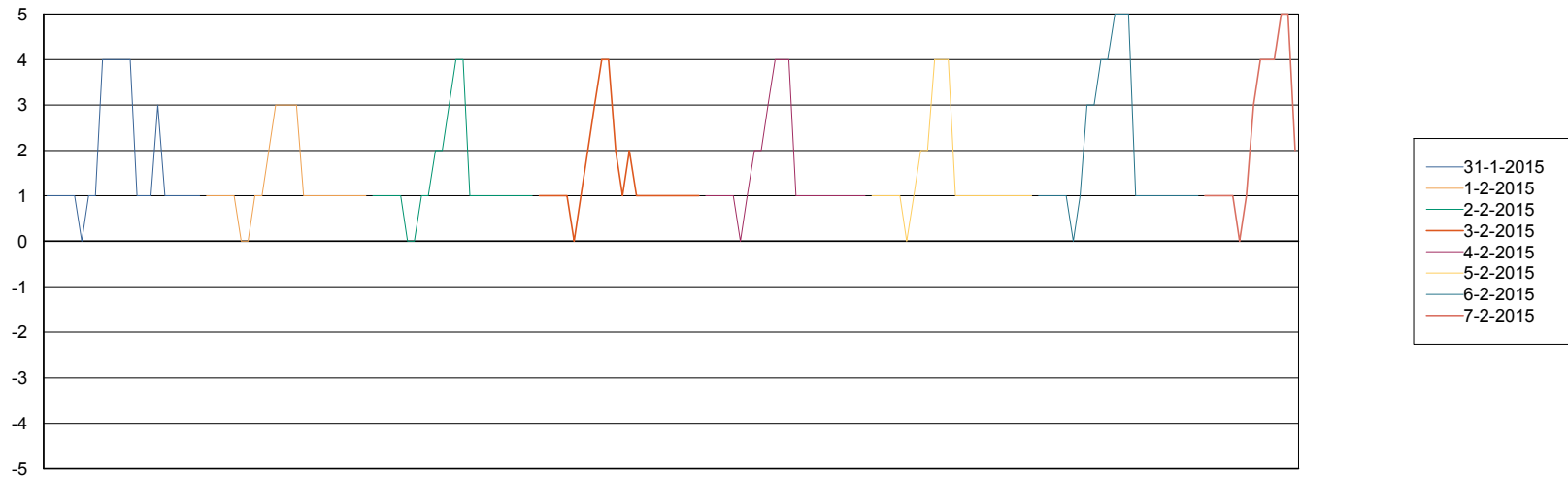
=====  
 DATABASE TABLESPACES NIXDB\_Production  
 =====

TOTAL DATABASE SIZE PER TABLESPACE

Date	Tablespace Name	Filesize (Gb)	Usedsize (Gb)	Percentage free
7-2-2015	ABSDATA	40	30	25
	INDX	109	85	22
6-2-2015	ABSDATA	40	30	25
	INDX	109	85	22
5-2-2015	ABSDATA	40	30	25
	INDX	109	85	22
4-2-2015	ABSDATA	40	30	25
	INDX	109	85	22
3-2-2015	ABSDATA	40	30	25
	INDX	109	85	22
2-2-2015	ABSDATA	40	30	25
	INDX	109	85	22
1-2-2015	ABSDATA	40	30	25
	INDX	109	85	22

=====  
 STANDBY DATABASE HEALTH NIX\_Production  
 =====

Recovery lag for last 7 days



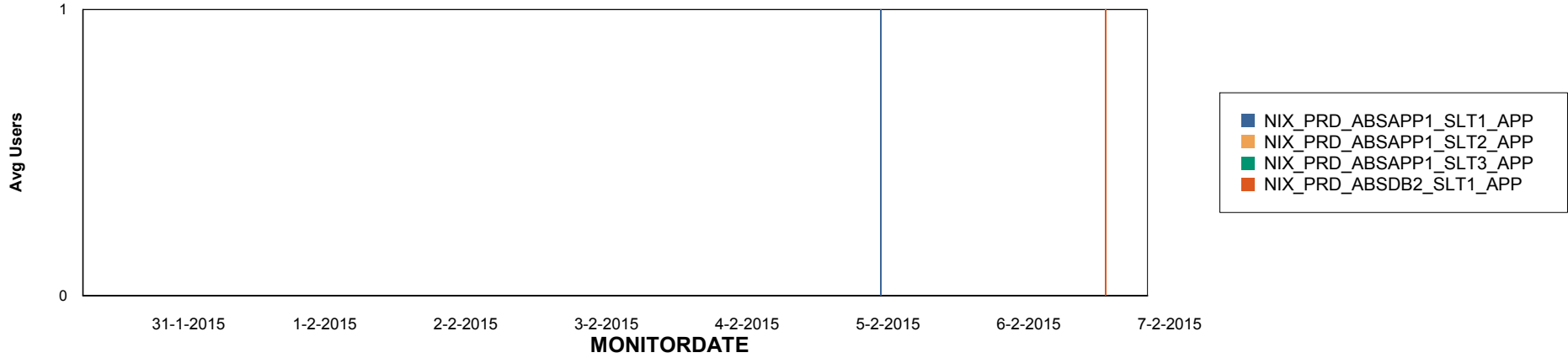
# Weekly SLA Customer Report

Customer NIX\_Production  
Database ID 51

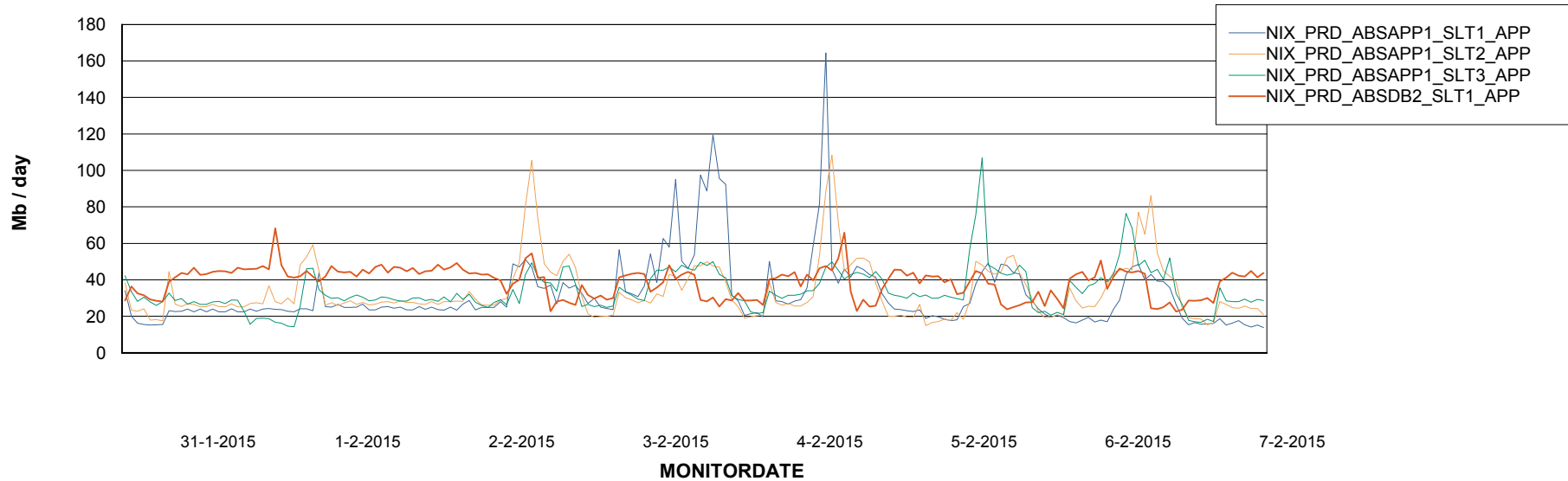


## ABSolute Application Server Services

### Disaster per ABS Server



### Avg memory used per ABS Server Service



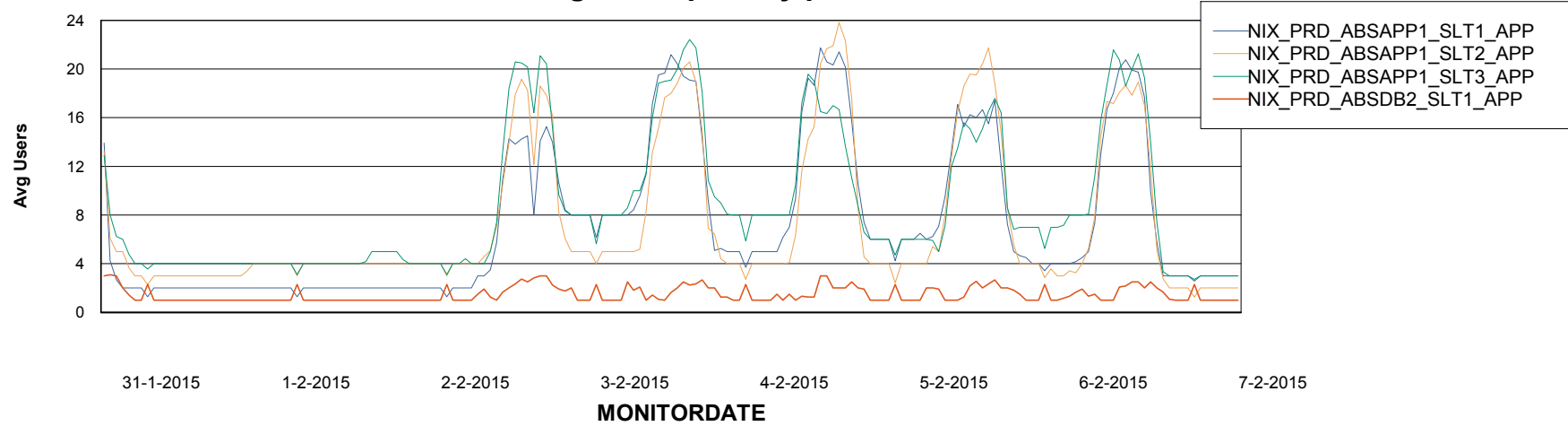
# Weekly SLA Customer Report

Customer NIX\_Production  
Database ID 51



=====  
ABSolute Application Server Services  
=====

### Avg users per day per ABS server



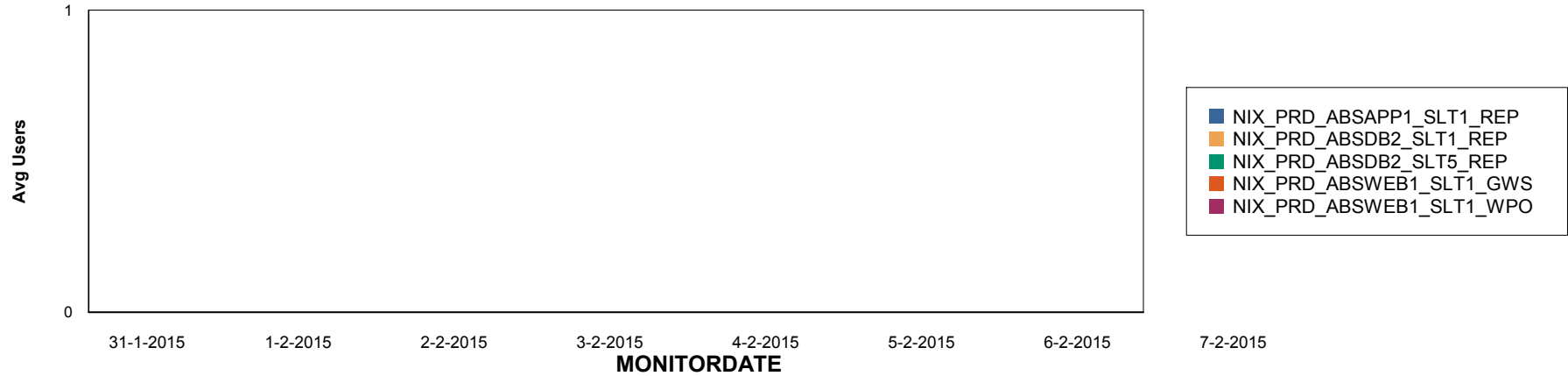
# Weekly SLA Customer Report

Customer NIX\_Production  
Database ID 51

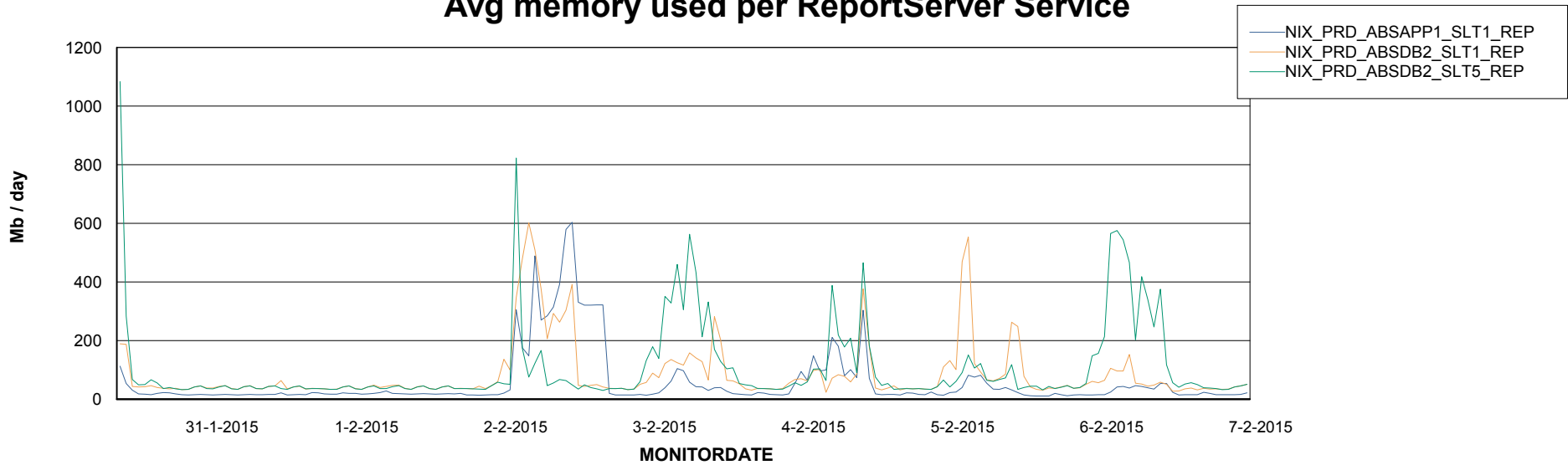


=====  
ABSolute Application ReportServer Services  
=====

## Disaster per ReportServer



## Avg memory used per ReportServer Service



# Weekly SLA Customer Report

Customer NIX\_Production  
Database ID 51



## Disaster per ABS component

