

Weekly SLA Customer Report

Customer RSS Production
 Database ID 52



=====
 HARDDISK USAGE RSS_PRD_SVRDC020v015
 =====

	Total disk space on C (GB)	Free disk space on C (GB)	Total disk space on D (GB)	Free disk space on D (GB)	Total disk space on E (GB)	Free disk space on E (GB)
31-1-2015	50	13	300	246	300	223
30-1-2015	50	13	300	246	300	224
29-1-2015	50	13	300	246	300	224
28-1-2015	50	13	300	246	300	225
27-1-2015	50	13	300	246	300	225
26-1-2015	50	13	300	246	300	226
25-1-2015	50	13	300	246	300	226

=====
 HARDDISK USAGE RSS_PRD_SVRDC021v015
 =====

	Total disk space on C (GB)	Free disk space on C (GB)	Total disk space on D (GB)	Free disk space on D (GB)	Total disk space on E (GB)	Free disk space on E (GB)
31-1-2015	60	25	300	262	300	228
30-1-2015	60	25	300	262	300	228
29-1-2015	60	25	300	262	300	229
28-1-2015	60	25	300	262	300	229
27-1-2015	60	25	300	262	300	230
26-1-2015	60	25	300	262	300	220
25-1-2015	60	25	300	262	300	219

Weekly SLA Customer Report

Customer RSS Production
Database ID 52



=====

HARDDISK USAGE RSS_PRD_SVRDC022v015

=====

	Total disk space on C (GB)	Free disk space on C (GB)	Total disk space on D (GB)	Free disk space on D (GB)
31-1-2015	40	15	5	1
30-1-2015	40	15	5	1
29-1-2015	40	15	5	1
28-1-2015	40	15	5	1
27-1-2015	40	15	5	1
26-1-2015	40	15	5	1
25-1-2015	40	15	5	1

=====

HARDDISK USAGE RSS_PRD_SVRDC190v016

=====

	Total disk space on C (GB)	Free disk space on C (GB)	Total disk space on D (GB)	Free disk space on D (GB)
31-1-2015	40	19	200	193
30-1-2015	40	19	200	193
29-1-2015	40	19	200	193
28-1-2015	40	19	200	193
27-1-2015	40	19	200	193
26-1-2015	40	19	200	193
25-1-2015	40	19	200	193

Weekly SLA Customer Report

Customer RSS Production
 Database ID 52



=====
 HARDDISK USAGE RSS_PRD_SVRDC191v016
 =====

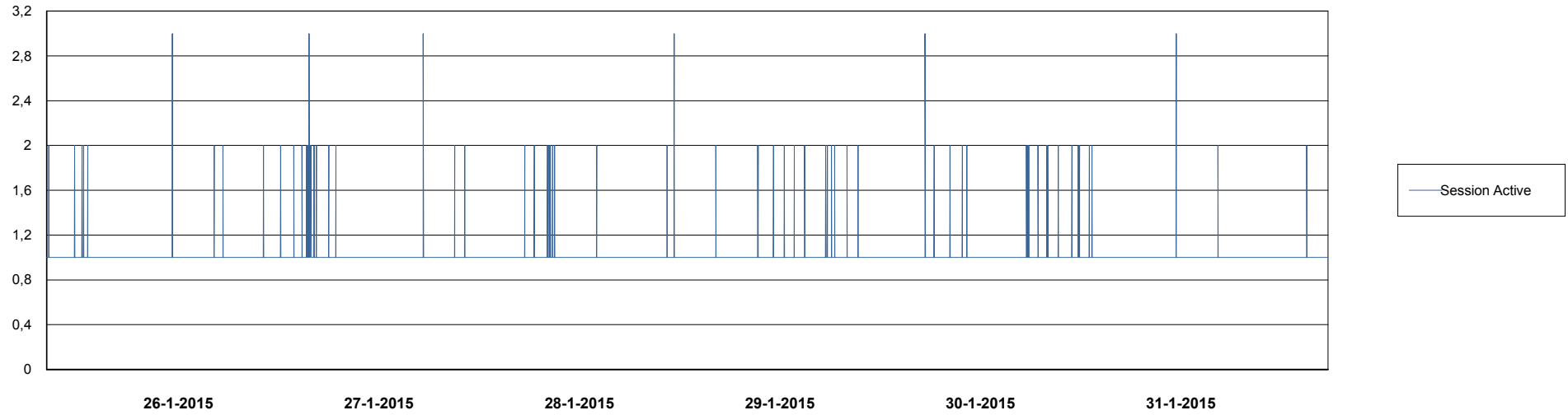
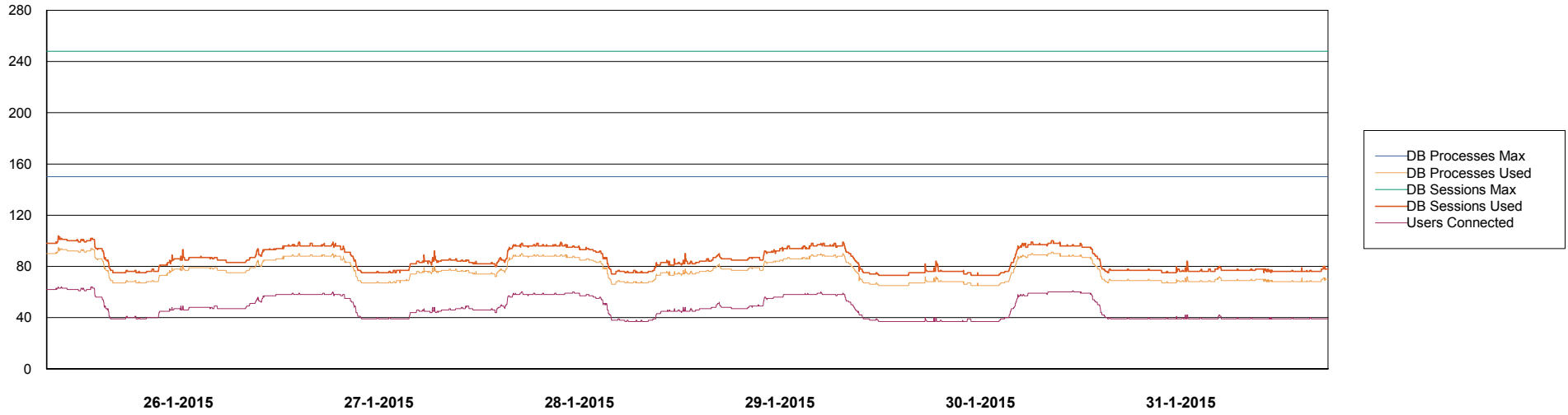
	Total disk space on C (GB)	Free disk space on C (GB)	Total disk space on D (GB)	Free disk space on D (GB)
31-1-2015	40	11	200	137
30-1-2015	40	11	200	137
29-1-2015	40	11	200	137
28-1-2015	40	11	200	137
27-1-2015	40	11	200	137
26-1-2015	40	11	200	137
25-1-2015	40	11	200	137

Weekly SLA Customer Report

Customer RSS Production
Database ID 52



DATABASE PERFORMANCE RSSDB_Production

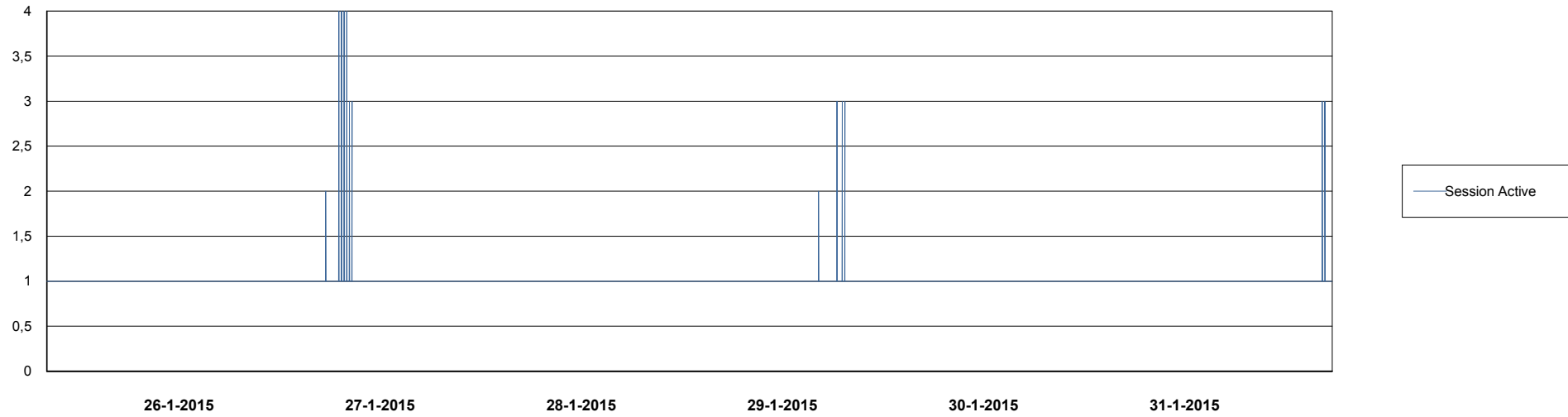
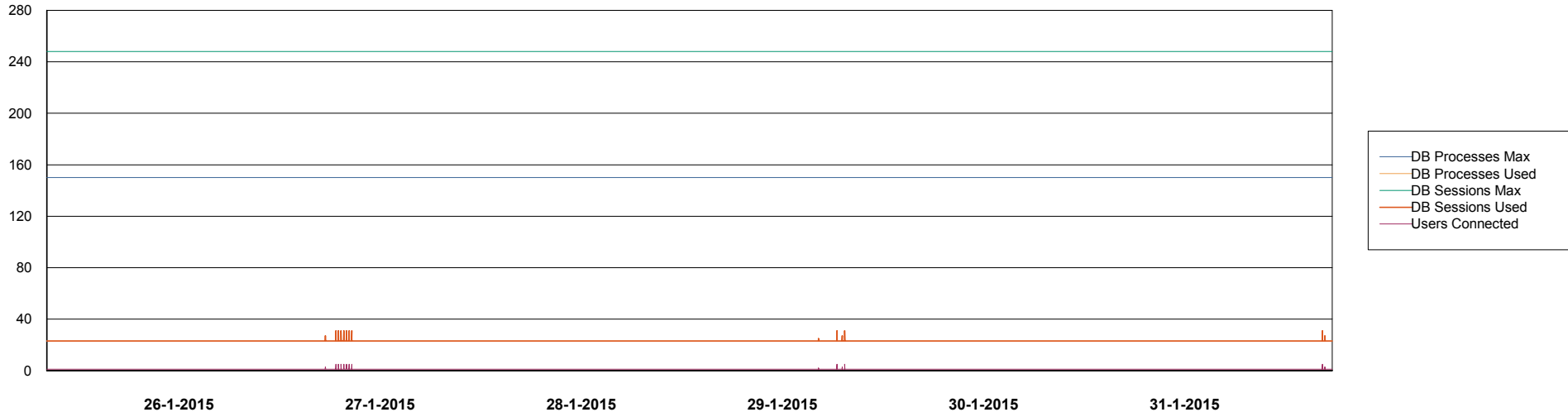


Weekly SLA Customer Report

Customer RSS Production
Database ID 52



DATABASE PERFORMANCE RSSDB_Standby



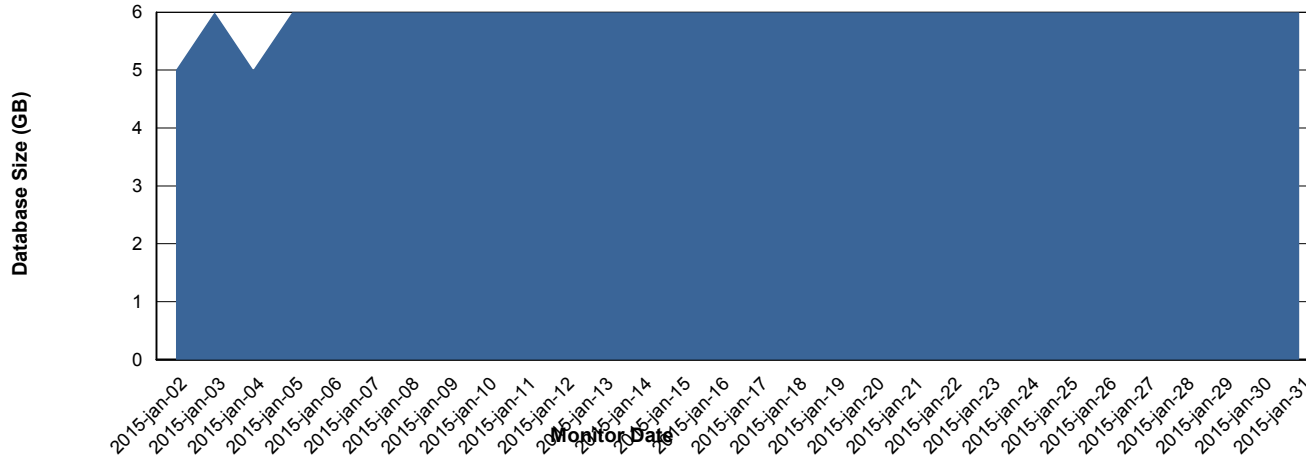
Weekly SLA Customer Report

Customer RSS Production
 Database ID 52



=====
 DATABASE SIZE RSSDB_Production
 =====

Database growth over last month



=====
 DATABASE TABLESPACES RSSDB_Production
 =====

TOTAL DATABASE SIZE PER TABLESPACE

Date	Tablespace Name	Filesize (Gb)	Usedsize (Gb)	Percentage free
31-1-2015	ABSDATA	2	1	50
	INDX	3	2	33
30-1-2015	ABSDATA	2	1	50
	INDX	3	2	33
29-1-2015	ABSDATA	2	1	50
	INDX	3	2	33
28-1-2015	ABSDATA	2	1	50
	INDX	3	2	33
27-1-2015	ABSDATA	2	1	50
	INDX	3	2	33
26-1-2015	ABSDATA	2	1	50
	INDX	3	2	33
25-1-2015	ABSDATA	2	1	50
	INDX	3	2	33

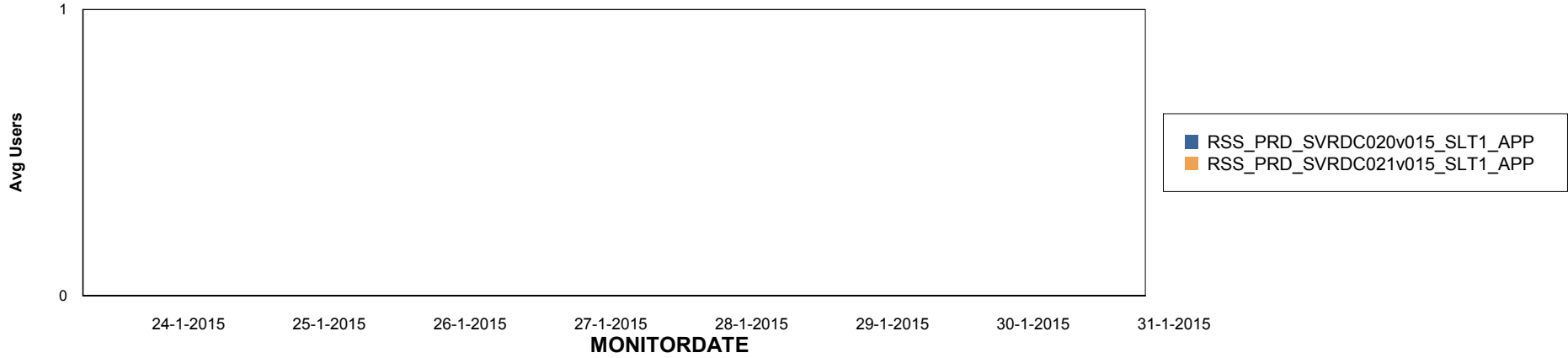
Weekly SLA Customer Report

Customer RSS Production
Database ID 52

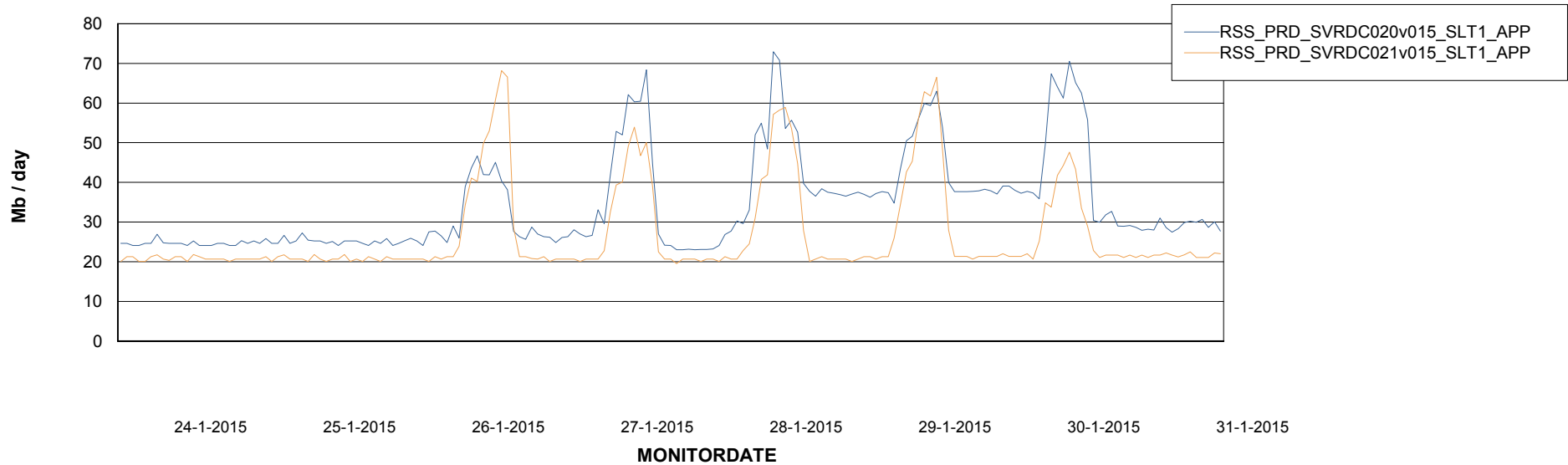


=====
ABSolute Application Server Services
=====

Disaster per ABS Server



Avg memory used per ABS Server Service



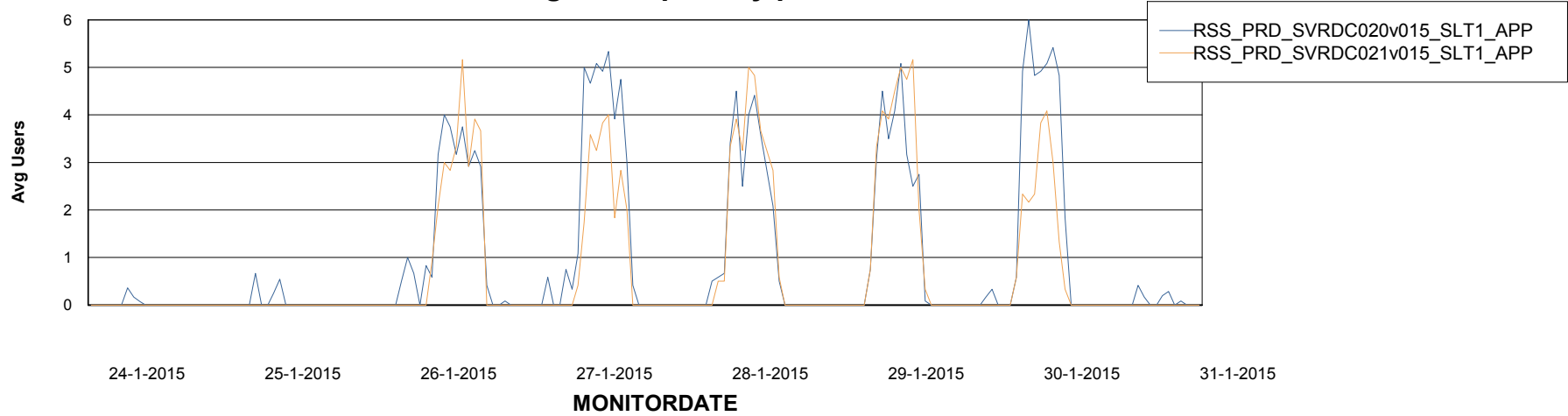
Weekly SLA Customer Report

Customer RSS Production
Database ID 52



=====
ABSolute Application Server Services
=====

Avg users per day per ABS server



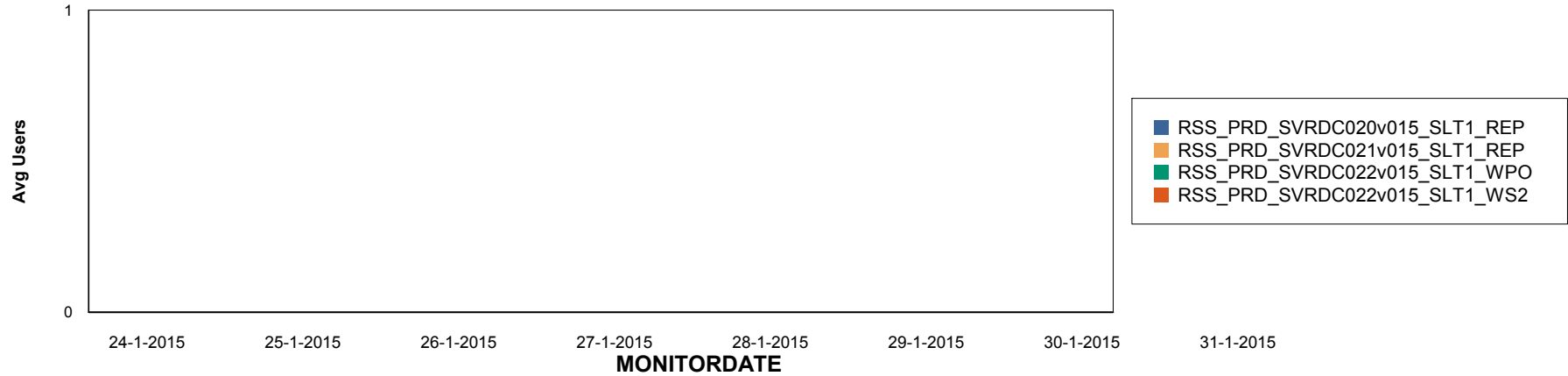
Weekly SLA Customer Report

Customer RSS Production
Database ID 52

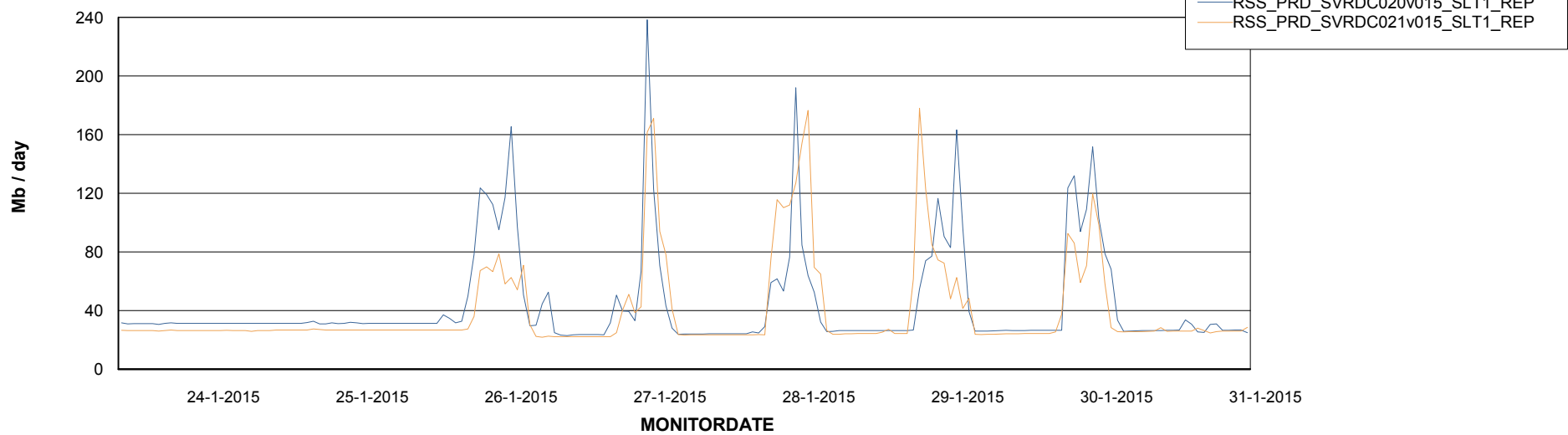


=====
ABSolute Application ReportServer Services
=====

Disaster per ReportServer



Avg memory used per ReportServer Service



Weekly SLA Customer Report

Customer RSS Production
Database ID 52



Disaster per ABS component

