

Weekly SLA Customer Report

Customer NIX_Production
 Database ID 51



=====
 HARDDISK USAGE NIX_PRD_ABSAPP1
 =====

	Total disk space on C (GB)	Free disk space on C (GB)
31-1-2015	136	90
30-1-2015	136	90
29-1-2015	136	90
28-1-2015	136	90
27-1-2015	136	90
26-1-2015	136	90
25-1-2015	136	90

=====
 HARDDISK USAGE NIX_PRD_ABSWEB1
 =====

	Total disk space on C (GB)	Free disk space on C (GB)	Total disk space on D (GB)
31-1-2015	930	746	3
30-1-2015	930	746	3
29-1-2015	930	746	3
28-1-2015	930	747	3
27-1-2015	930	747	3
26-1-2015	930	747	3
25-1-2015	930	747	3

Weekly SLA Customer Report

Customer NIX_Production
 Database ID 51



=====
 HARDDISK USAGE NIX_PRD_ORACLE_B11
 =====

	Total disk space on C (GB)	Free disk space on C (GB)	Total disk space on D (GB)	Free disk space on D (GB)	Total disk space on E (GB)	Free disk space on E (GB)
31-1-2015	99	54	279	169	99	29
30-1-2015	99	54	279	169	99	29
29-1-2015	99	54	279	169	99	29
28-1-2015	99	54	279	169	99	29
27-1-2015	99	54	279	169	99	29
26-1-2015	99	54	279	169	99	29
25-1-2015	99	54	279	169	99	29

=====
 HARDDISK USAGE NIX_PRD_ORCDB1
 =====

	Total disk space on C (GB)	Free disk space on C (GB)	Total disk space on D (GB)	Free disk space on D (GB)	Total disk space on E (GB)	Free disk space on E (GB)
31-1-2015	136	68	136	27	136	49
30-1-2015	136	68	136	27	136	51
29-1-2015	136	68	136	27	136	51
28-1-2015	136	68	136	27	136	51
27-1-2015	136	68	136	27	136	51
26-1-2015	136	68	136	27	136	51
25-1-2015	136	68	136	27	136	51

Weekly SLA Customer Report

Customer NIX_Production
 Database ID 51



=====
 HARDDISK USAGE NIX_PRD_ORCDB2
 =====

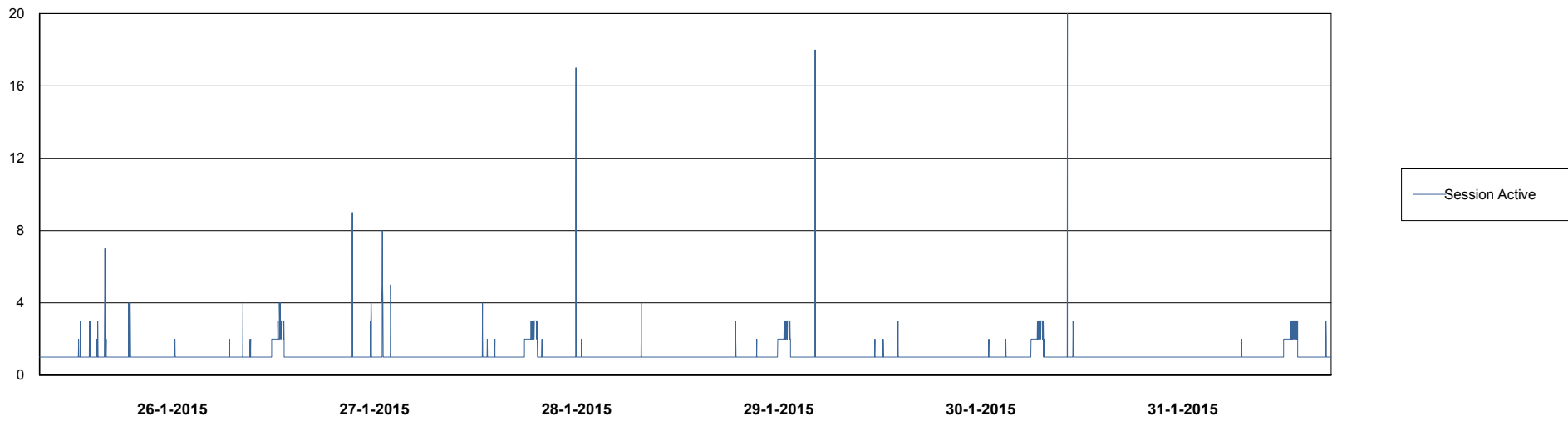
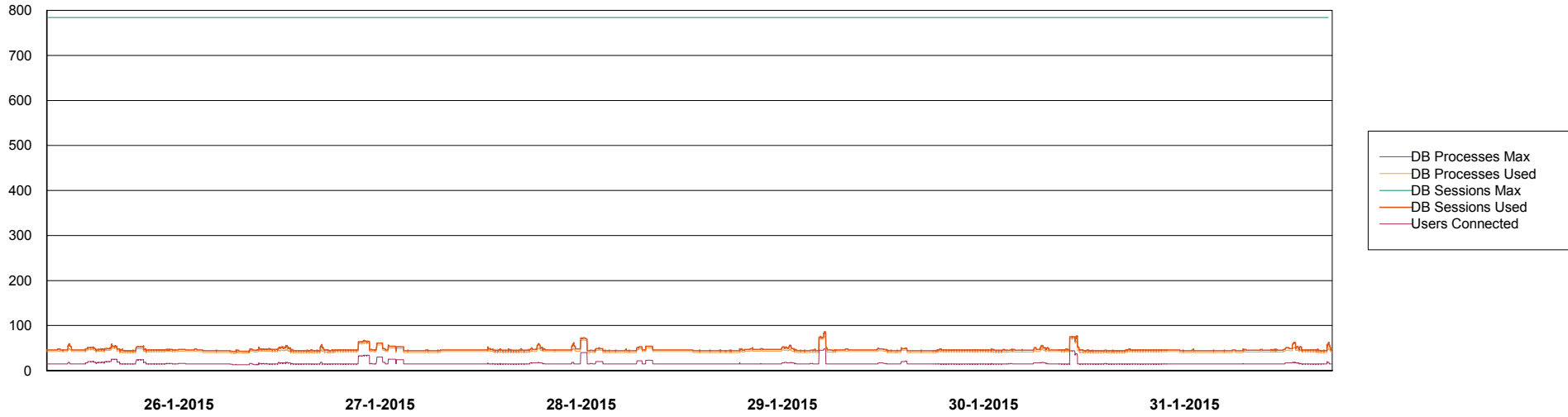
	Total disk space on C (GB)	Free disk space on C (GB)	Total disk space on D (GB)	Free disk space on D (GB)	Total disk space on E (GB)	Free disk space on E (GB)
31-1-2015	279	68	279	51	279	132
30-1-2015	279	68	279	51	279	151
29-1-2015	279	68	279	51	279	137
28-1-2015	279	68	279	51	279	134
27-1-2015	279	68	279	51	279	135
26-1-2015	279	68	279	51	279	158
25-1-2015	279	68	279	51	279	131

Weekly SLA Customer Report

Customer NIX_Production
Database ID 51



DATABASE PERFORMANCE NIXDB_BI



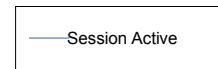
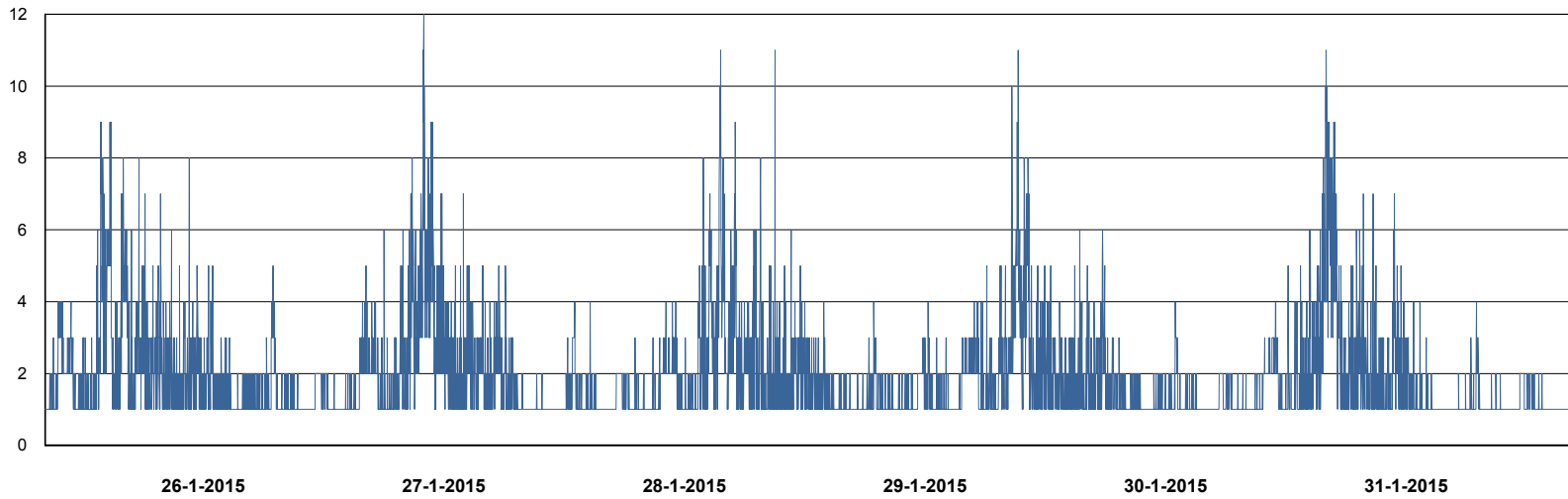
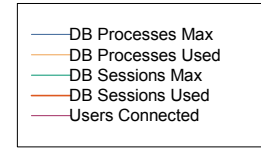
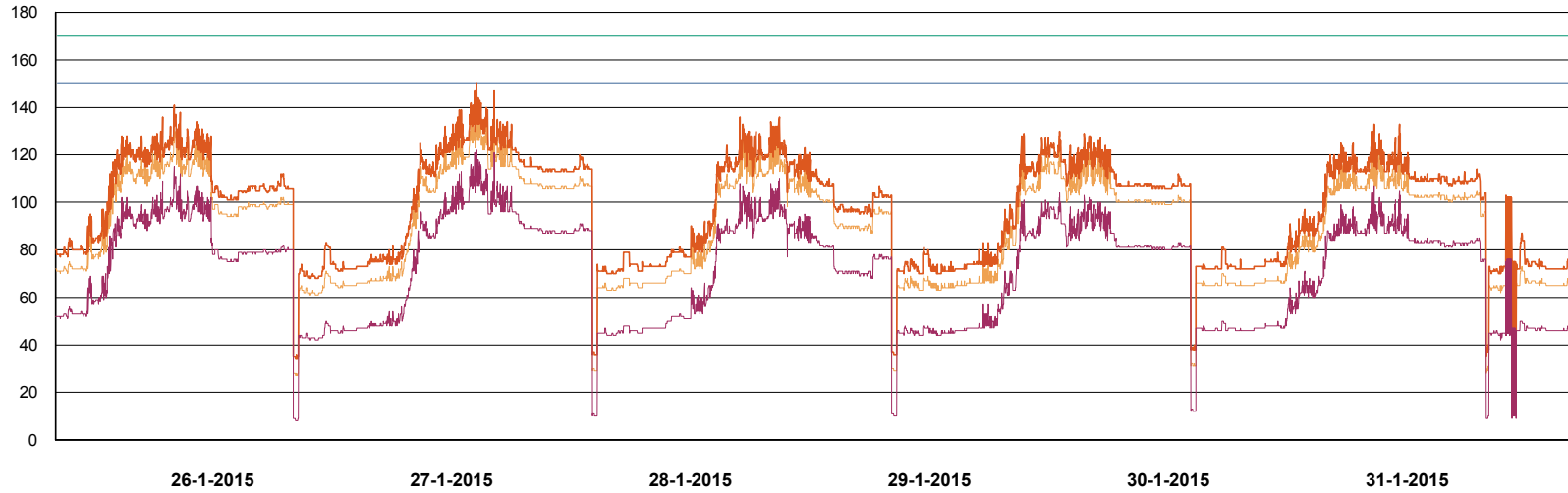
Weekly SLA Customer Report

Customer NIX_Production
Database ID 51



DATABASE PERFORMANCE

NIXDB_Production

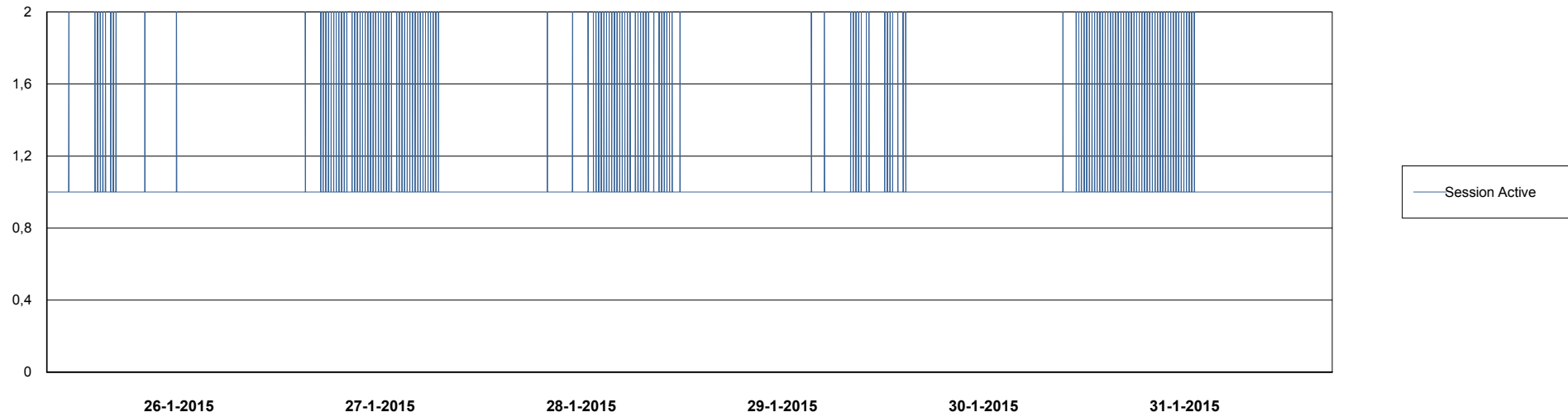
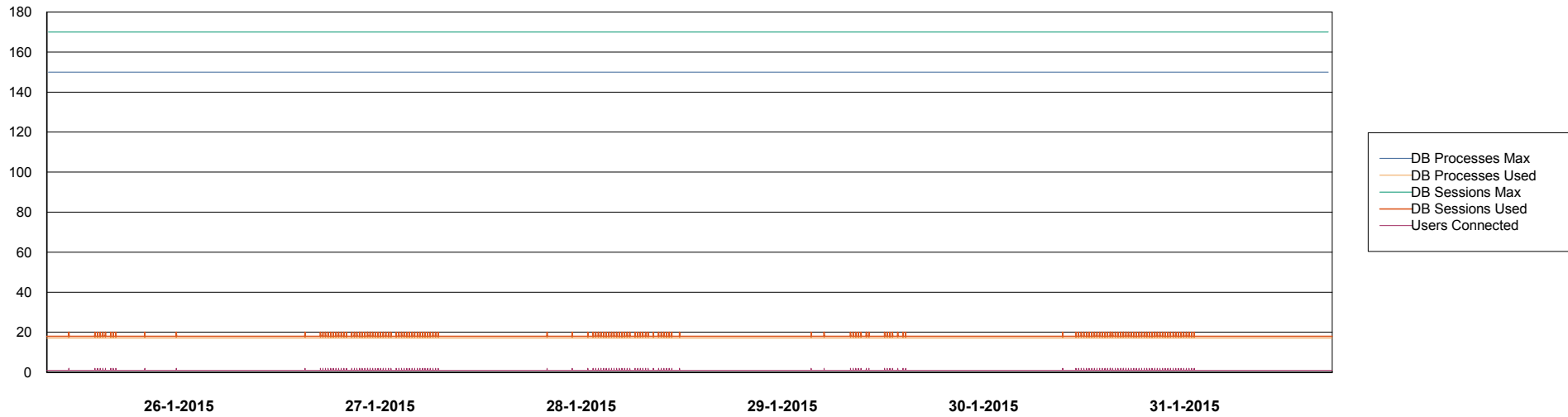


Weekly SLA Customer Report

Customer NIX_Production
Database ID 51



DATABASE PERFORMANCE NIXDB_Standby



Weekly SLA Customer Report

Customer NIX_Production
 Database ID 51



=====
 DATABASE TABLESPACES NIXDB_BI
 =====

TOTAL DATABASE SIZE PER TABLESPACE

Date	Tablespace Name	Filesize (Gb)	Usedsize (Gb)	Percentage free
31-1-2015	ABSDATA	28	19	32
	INDX	44	30	32
30-1-2015	ABSDATA	28	19	32
	INDX	44	30	32
29-1-2015	ABSDATA	28	19	32
	INDX	44	30	32
28-1-2015	ABSDATA	28	19	32
	INDX	44	30	32
27-1-2015	ABSDATA	28	19	32
	INDX	44	30	32
26-1-2015	ABSDATA	28	19	32
	INDX	44	30	32
25-1-2015	ABSDATA	28	19	32
	INDX	44	30	32

Weekly SLA Customer Report

Customer NIX_Production
 Database ID 51



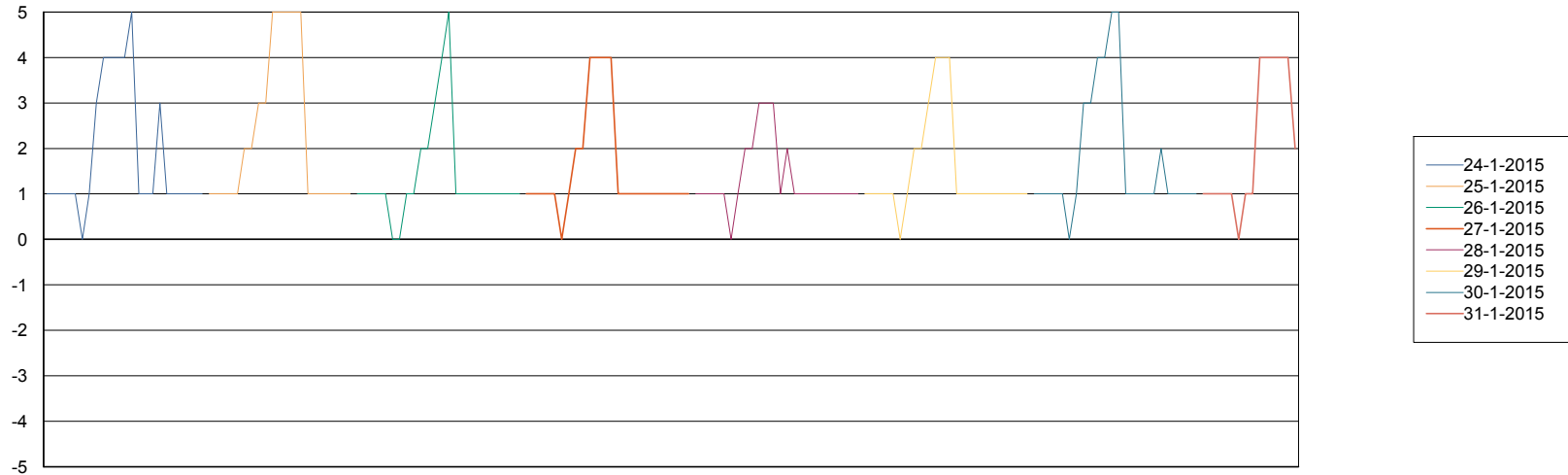
=====
 DATABASE TABLESPACES NIXDB_Production
 =====

TOTAL DATABASE SIZE PER TABLESPACE

Date	Tablespace Name	Filesize (Gb)	Usedsize (Gb)	Percentage free
31-1-2015	ABSDATA	40	30	25
	INDX	109	84	23
30-1-2015	ABSDATA	40	30	25
	INDX	109	84	23
29-1-2015	ABSDATA	40	30	25
	INDX	109	84	23
28-1-2015	ABSDATA	40	30	25
	INDX	109	84	23
27-1-2015	ABSDATA	40	30	25
	INDX	109	84	23
26-1-2015	ABSDATA	40	30	25
	INDX	109	84	23
25-1-2015	ABSDATA	40	30	25
	INDX	109	84	23

=====
 STANDBY DATABASE HEALTH NIX_Production
 =====

Recovery lag for last 7 days



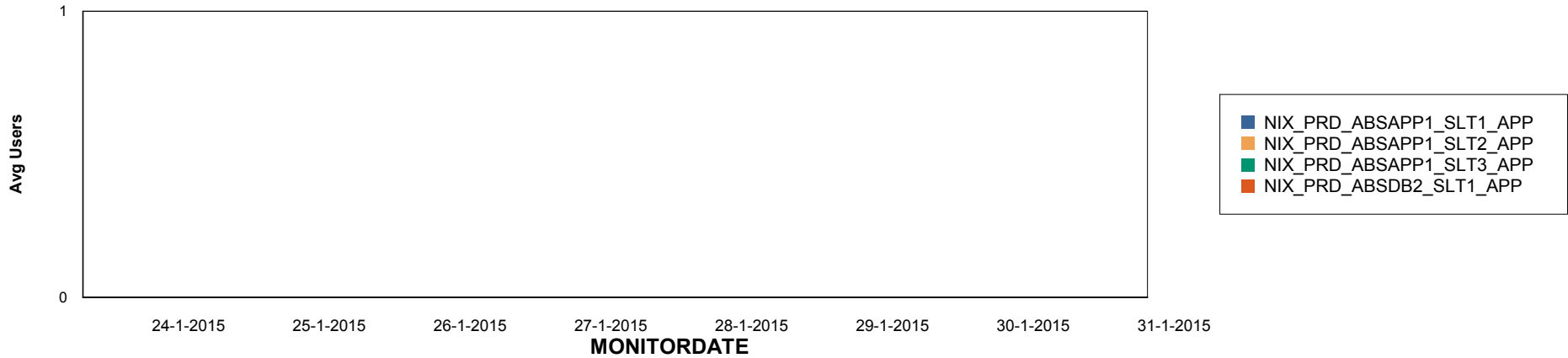
Weekly SLA Customer Report

Customer NIX_Production
Database ID 51

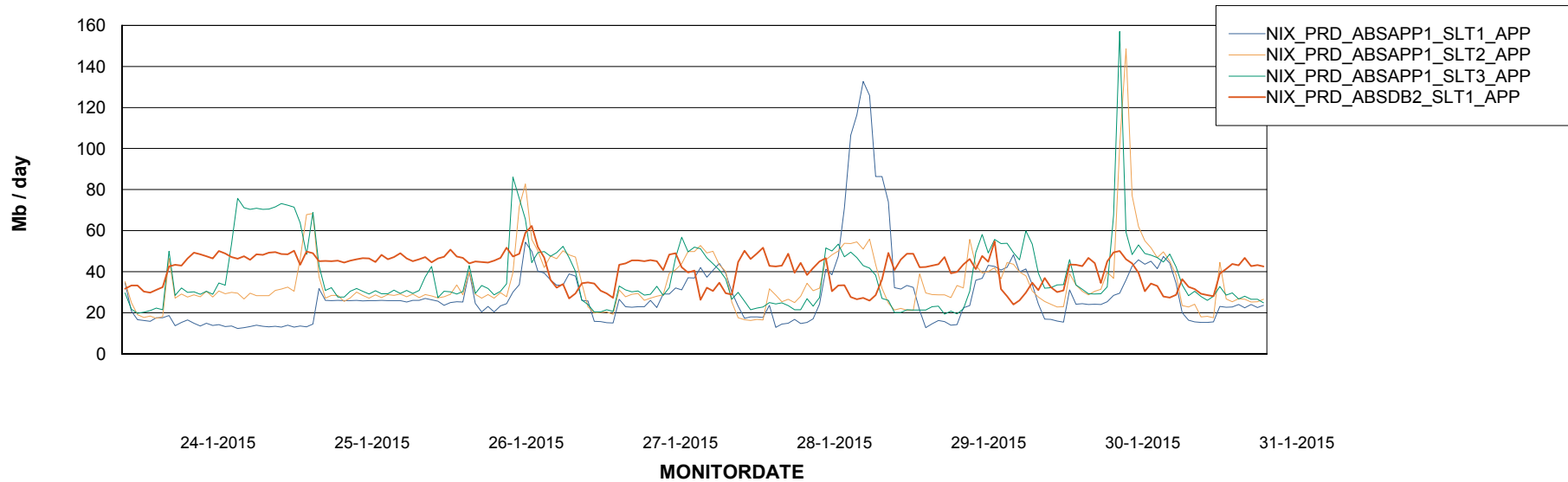


ABSolute Application Server Services

Disaster per ABS Server



Avg memory used per ABS Server Service



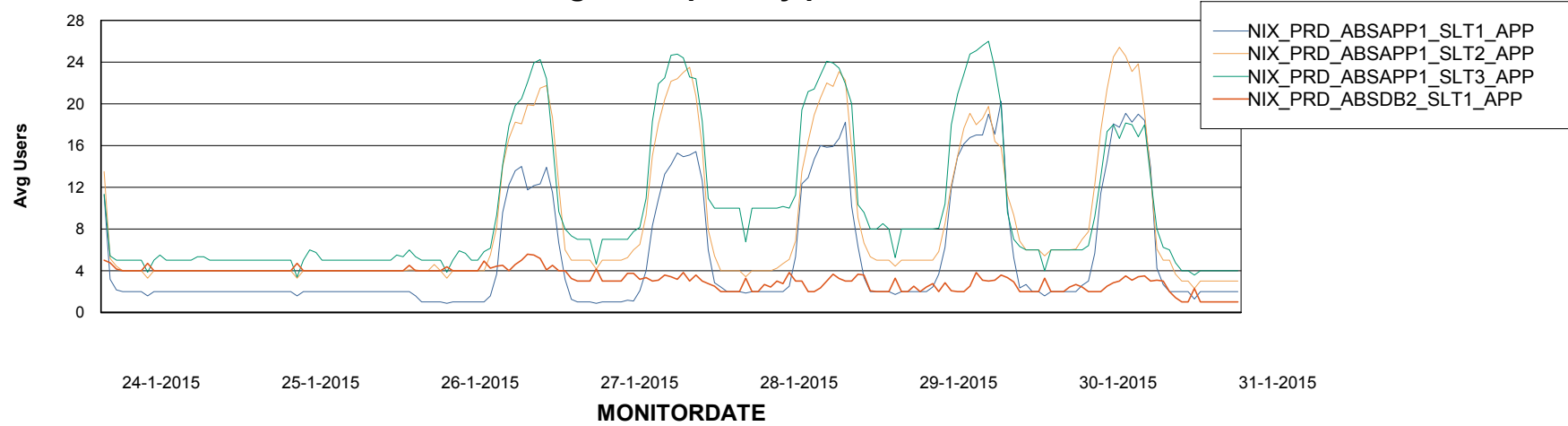
Weekly SLA Customer Report

Customer NIX_Production
Database ID 51



=====
ABSolute Application Server Services
=====

Avg users per day per ABS server



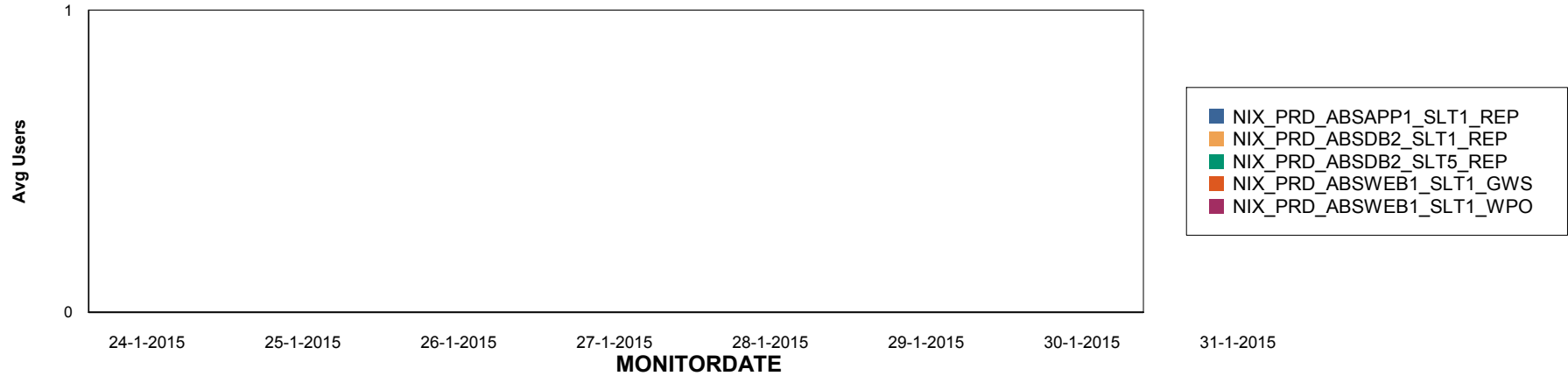
Weekly SLA Customer Report

Customer NIX_Production
Database ID 51

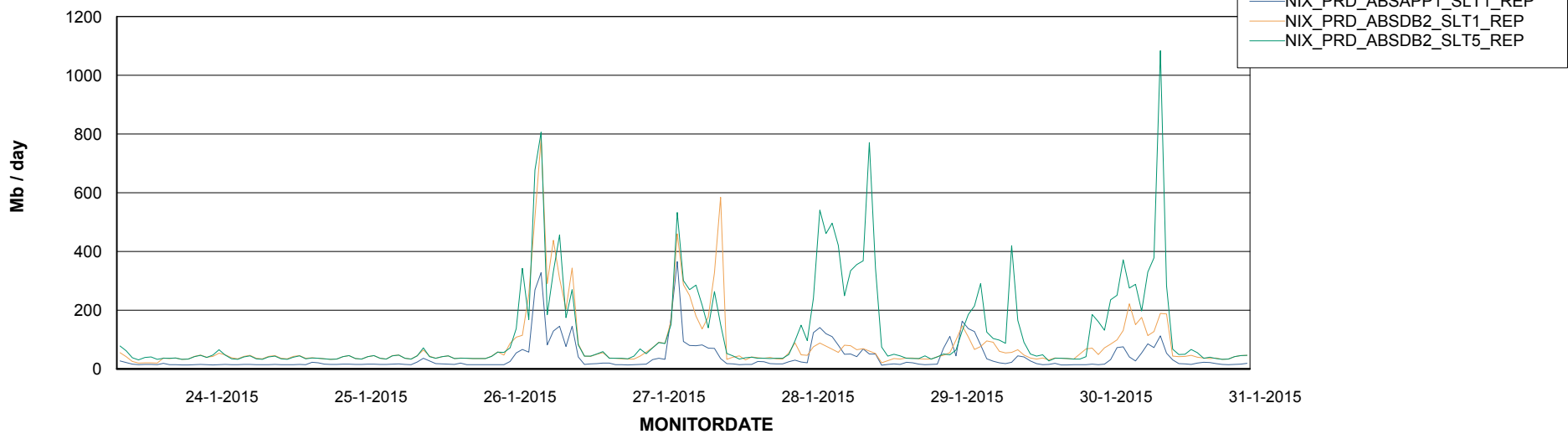


=====
ABSolute Application ReportServer Services
=====

Disaster per ReportServer



Avg memory used per ReportServer Service



Weekly SLA Customer Report

Customer NIX_Production
Database ID 51



Disaster per ABS component

