

## Weekly SLA Customer Report

Customer      JWR Production  
 Database ID    43



=====  
 HARDDISK USAGE    JWR\_PRD\_JWR-ABS-01  
 =====

	Used disk space on / (GB)	Total disk space on / (GB)	Free disk space on / (GB)
31-1-2015	27	49	20
30-1-2015	27	49	20
29-1-2015	27	49	20
28-1-2015	27	49	20
27-1-2015	27	49	20
26-1-2015	27	49	20
25-1-2015	27	49	20

=====  
 HARDDISK USAGE    JWR\_PRD\_JWR-ABS-02  
 =====

	Used disk space on / (GB)	Total disk space on / (GB)	Free disk space on / (GB)
31-1-2015	27	49	19
30-1-2015	27	49	19
29-1-2015	27	49	19
28-1-2015	27	49	19
27-1-2015	27	49	19
26-1-2015	27	49	19
25-1-2015	27	49	19

## Weekly SLA Customer Report

Customer      JWR Production  
 Database ID    43



=====  
 HARDDISK USAGE    JWR\_PRD\_JWR-ODB-01  
 =====

	Used disk space on / (GB)	Total disk space on / (GB)	Free disk space on / (GB)
31-1-2015	82	148	59
30-1-2015	82	148	58
29-1-2015	82	148	59
28-1-2015	82	148	59
27-1-2015	82	148	59
26-1-2015	82	148	59
25-1-2015	82	148	59

=====  
 HARDDISK USAGE    JWR\_PRD\_JWR-ODB-02  
 =====

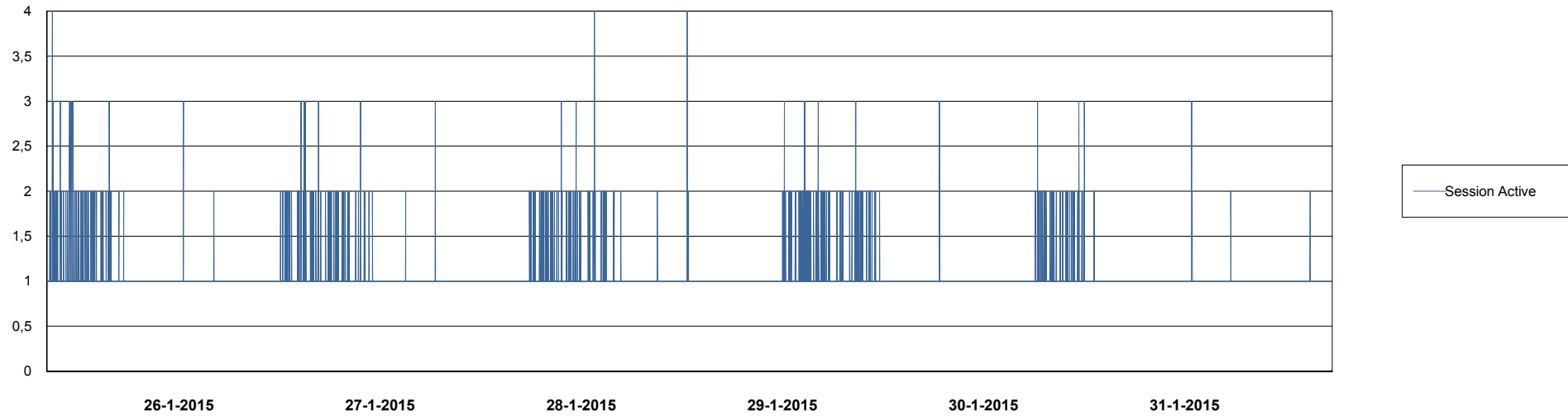
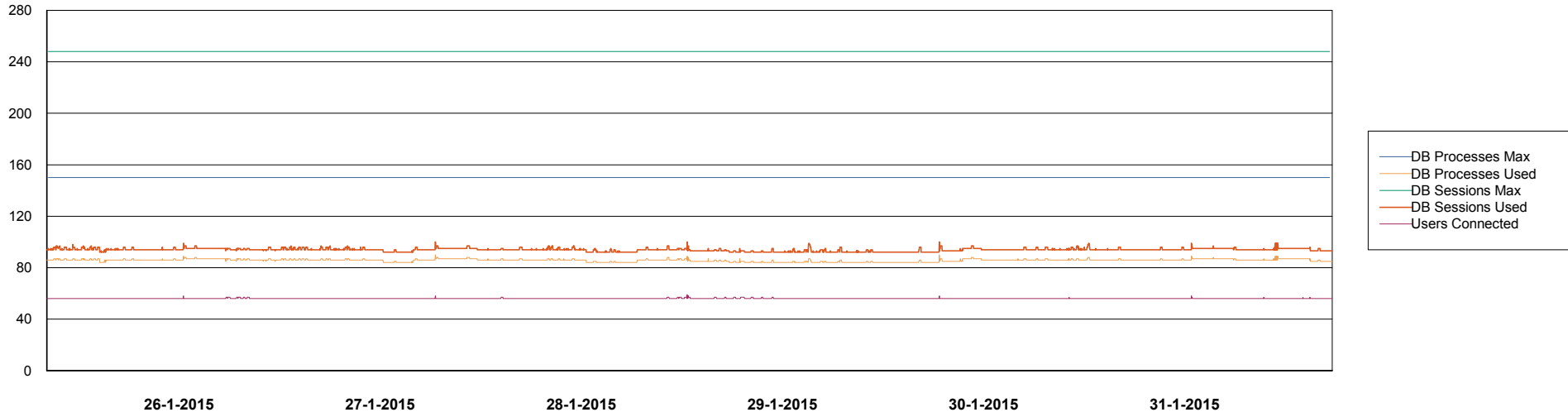
	Used disk space on / (GB)	Total disk space on / (GB)	Free disk space on / (GB)
31-1-2015	92	138	39
30-1-2015	92	138	39
29-1-2015	91	138	39
28-1-2015	91	138	39
27-1-2015	91	138	40
26-1-2015	92	138	39
25-1-2015	91	138	40

# Weekly SLA Customer Report

Customer JWR Production  
Database ID 43



DATABASE PERFORMANCE JWRDB\_Production



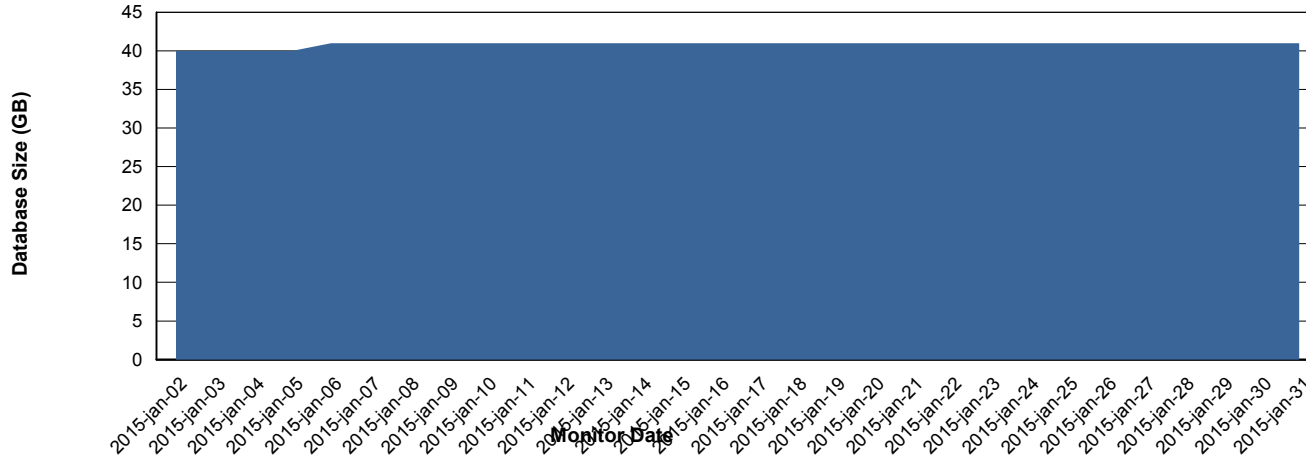
# Weekly SLA Customer Report

Customer JWR Production  
 Database ID 43



=====  
 DATABASE SIZE JWRDB\_Production  
 =====

## Database growth over last month



=====  
 DATABASE TABLESPACES JWRDB\_Production  
 =====

### TOTAL DATABASE SIZE PER TABLESPACE

Date	Tablespace Name	Filesize (Gb)	Usedsize (Gb)	Percentage free
31-1-2015	ABSDATA	18	12	33
	INDX	38	28	26
30-1-2015	ABSDATA	18	12	33
	INDX	38	28	26
29-1-2015	ABSDATA	18	12	33
	INDX	38	28	26
28-1-2015	ABSDATA	18	12	33
	INDX	38	28	26
27-1-2015	ABSDATA	18	12	33
	INDX	38	28	26
26-1-2015	ABSDATA	18	12	33
	INDX	38	28	26
25-1-2015	ABSDATA	18	12	33
	INDX	38	28	26

# Weekly SLA Customer Report

---

Customer     JWR Production  
Database ID   43



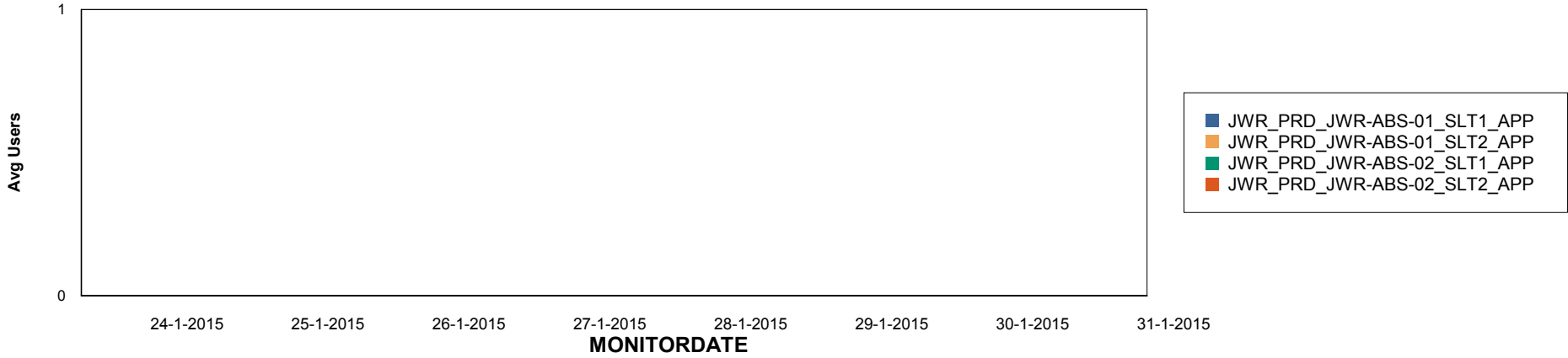
# Weekly SLA Customer Report

Customer JWR Production  
Database ID 43

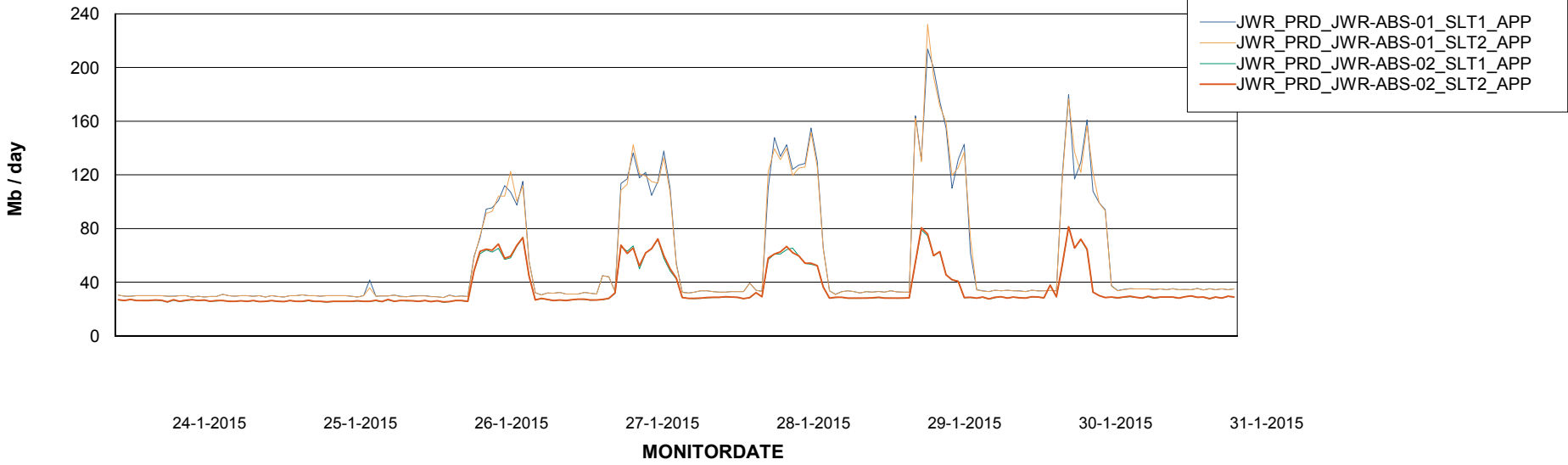


=====  
ABSolute Application Server Services  
=====

## Disaster per ABS Server



## Avg memory used per ABS Server Service



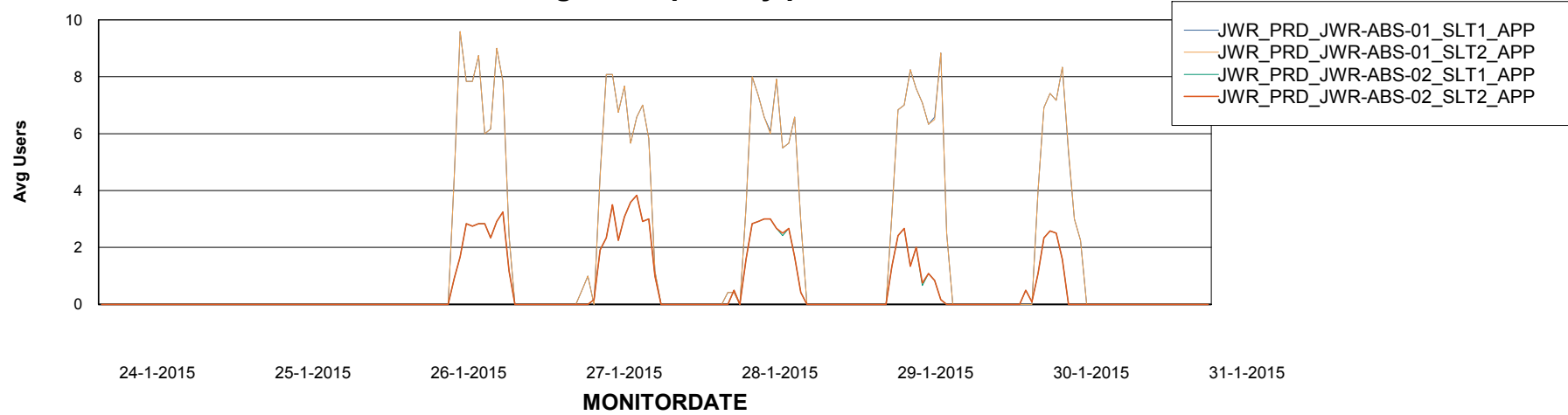
# Weekly SLA Customer Report

Customer JWR Production  
Database ID 43



=====  
ABSolute Application Server Services  
=====

### Avg users per day per ABS server



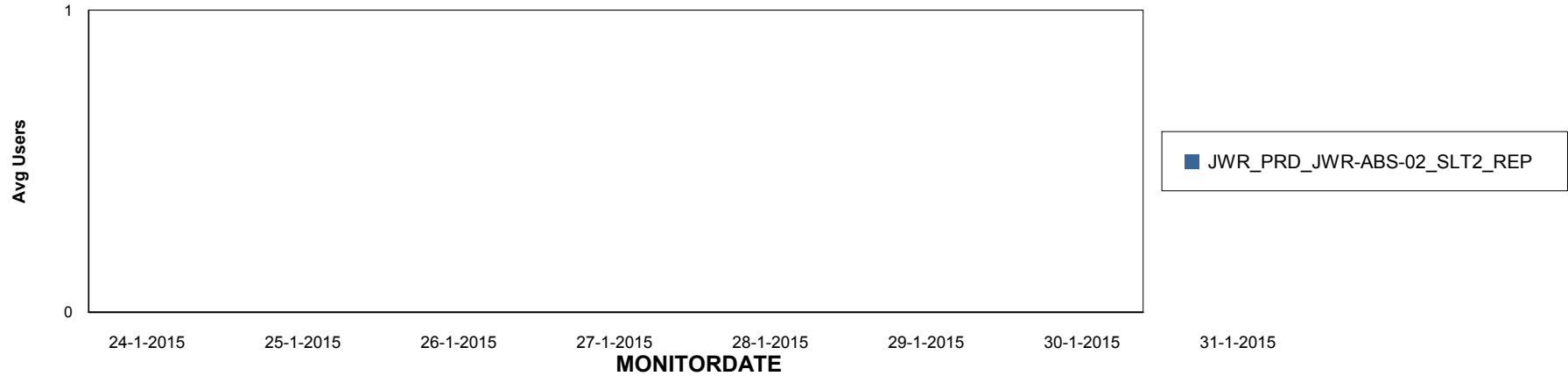
# Weekly SLA Customer Report

Customer JWR Production  
Database ID 43

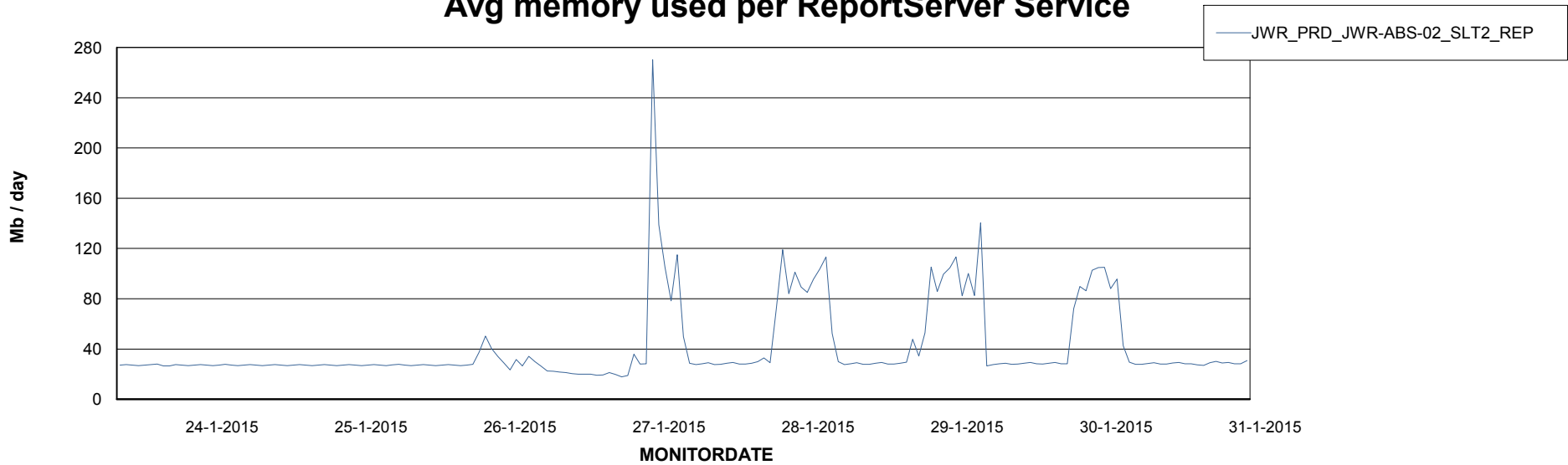


=====  
ABSolute Application ReportServer Services  
=====

## Disaster per ReportServer



## Avg memory used per ReportServer Service



# Weekly SLA Customer Report

Customer JWR Production  
Database ID 43



## Disaster per ABS component

