

## Weekly SLA Customer Report

Customer RFL\_Production  
 Database ID 36



=====  
 HARDDISK USAGE RFL\_PRD\_ORACLE1  
 =====

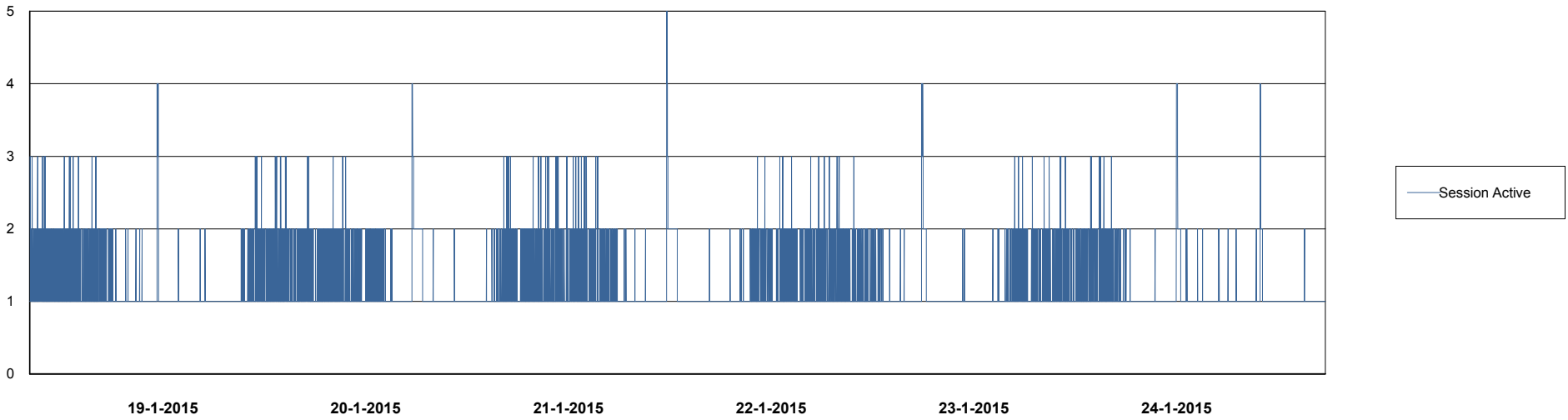
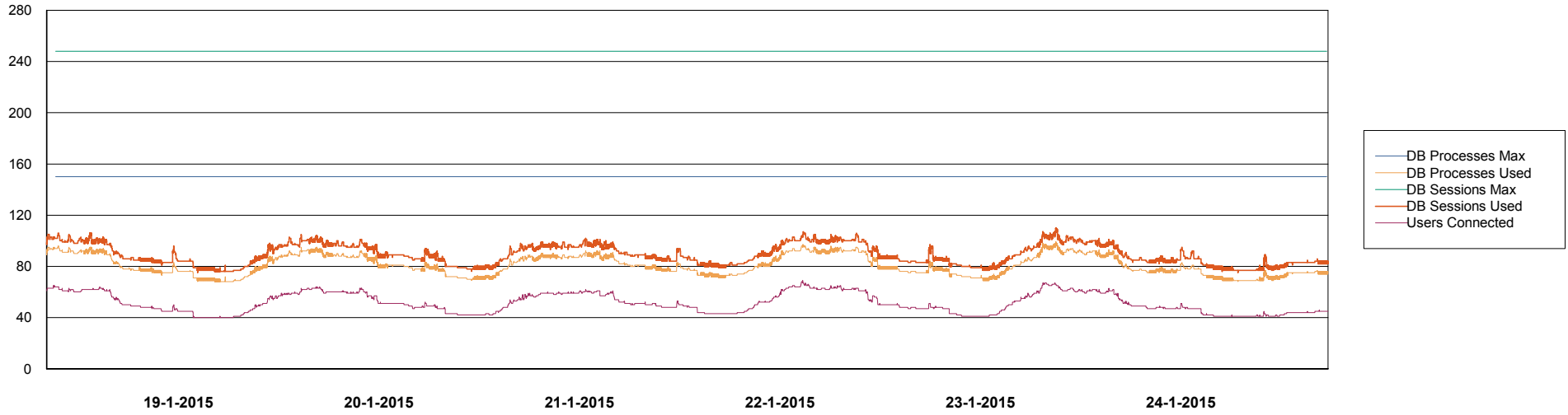
	Total disk space on C (GB)	Free disk space on C (GB)	Total disk space on D (GB)	Free disk space on D (GB)	Total disk space on E (GB)	Free disk space on E (GB)
24-1-2015	279	113	137	93	137	86
23-1-2015	279	113	137	93	137	86
22-1-2015	279	113	137	93	137	87
21-1-2015	279	113	137	93	137	88
20-1-2015	279	113	137	93	137	89
19-1-2015	279	113	137	93	137	90
18-1-2015	279	113	137	93	137	91

# Weekly SLA Customer Report

Customer RFL\_Production  
Database ID 36



## DATABASE PERFORMANCE RFLDB\_Production

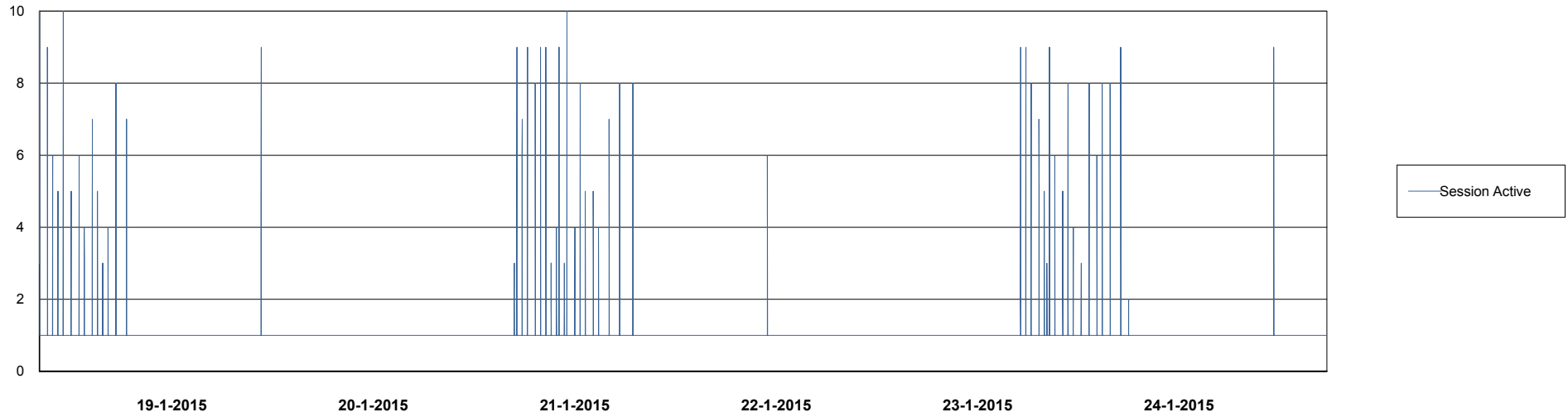
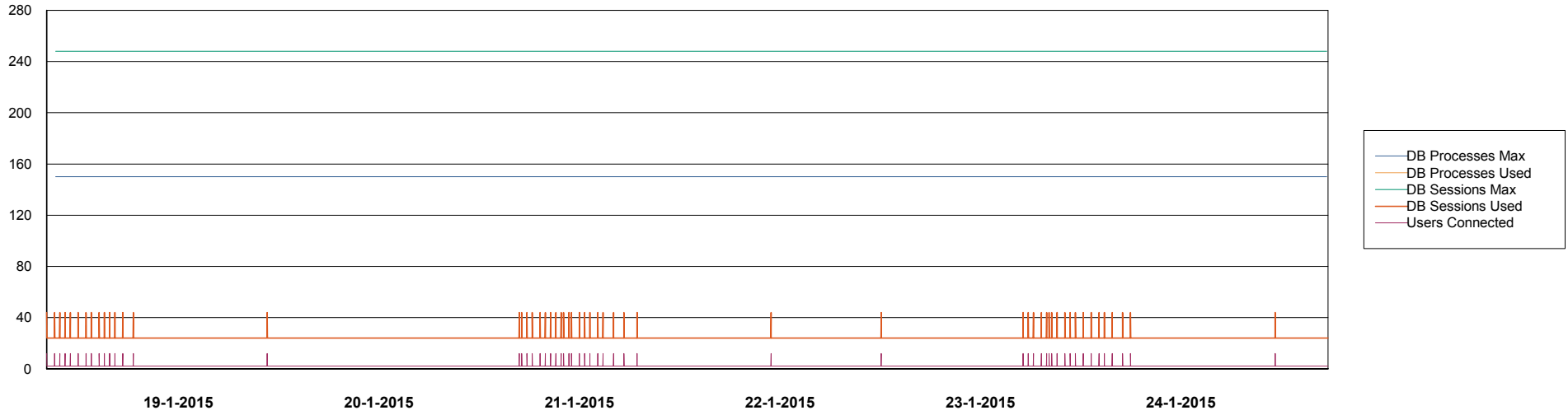


# Weekly SLA Customer Report

Customer RFL\_Production  
Database ID 36



## DATABASE PERFORMANCE RFLDB\_Standby



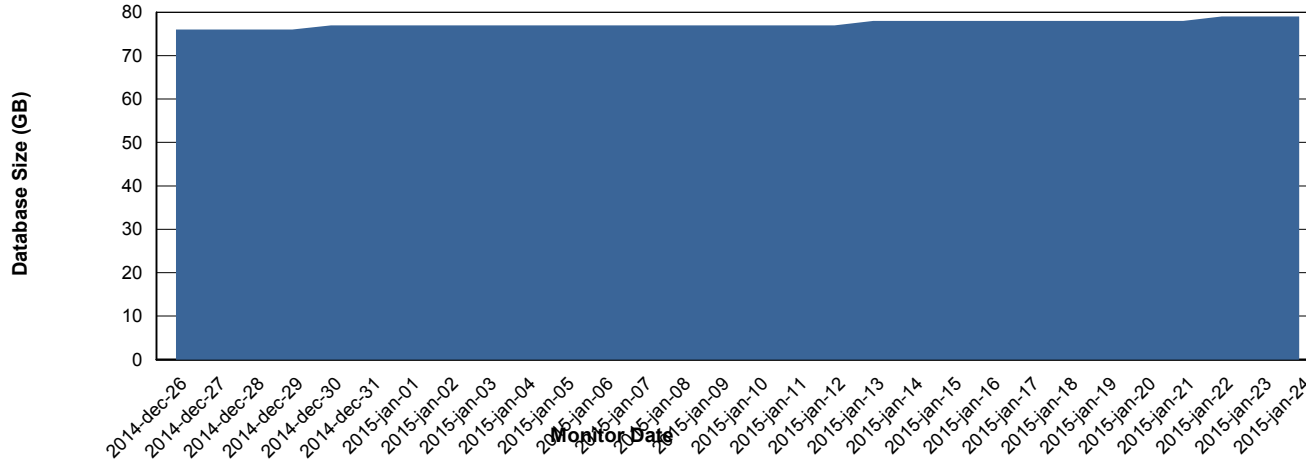
# Weekly SLA Customer Report

Customer RFL\_Production  
 Database ID 36



=====  
 DATABASE SIZE RFLDB\_Production  
 =====

## Database growth over last month



=====  
 DATABASE TABLESPACES RFLDB\_Production  
 =====

### TOTAL DATABASE SIZE PER TABLESPACE

Date	Tablespace Name	Filesize (Gb)	Usedsize (Gb)	Percentage free
24-1-2015	ABSDATA	28	19	32
	INDX	80	59	26
23-1-2015	ABSDATA	28	19	32
	INDX	80	59	26
22-1-2015	ABSDATA	28	19	32
	INDX	80	59	26
21-1-2015	ABSDATA	28	19	32
	INDX	80	59	26
20-1-2015	ABSDATA	28	19	32
	INDX	80	58	28
19-1-2015	ABSDATA	28	19	32
	INDX	80	58	28
18-1-2015	ABSDATA	28	19	32
	INDX	80	58	28

# Weekly SLA Customer Report

Customer RFL\_Production  
Database ID 36



=====  
STANDBY DATABASE HEALTH RFL\_Production  
=====

### Recovery lag for last 7 days

