

Weekly SLA Customer Report

Customer NIX_Production
 Database ID 51



=====
 HARDDISK USAGE NIX_PRD_ABSAPP1
 =====

| | Total disk space on C (GB) | Free disk space on C (GB) |
|-----------|----------------------------|---------------------------|
| 24-1-2015 | 136 | 90 |
| 23-1-2015 | 136 | 90 |
| 22-1-2015 | 136 | 90 |
| 21-1-2015 | 136 | 90 |
| 20-1-2015 | 136 | 90 |
| 19-1-2015 | 136 | 90 |
| 18-1-2015 | 136 | 90 |

=====
 HARDDISK USAGE NIX_PRD_ABSWEB1
 =====

| | Total disk space on C (GB) | Free disk space on C (GB) | Total disk space on D (GB) |
|-----------|----------------------------|---------------------------|----------------------------|
| 24-1-2015 | 930 | 747 | 3 |
| 23-1-2015 | 930 | 747 | 3 |
| 22-1-2015 | 930 | 747 | 3 |
| 21-1-2015 | 930 | 748 | 3 |
| 20-1-2015 | 930 | 748 | 3 |
| 19-1-2015 | 930 | 748 | 3 |
| 18-1-2015 | 930 | 748 | 3 |

Weekly SLA Customer Report

Customer NIX_Production
 Database ID 51



=====
 HARDDISK USAGE NIX_PRD_ORACLE_B11
 =====

| | Total disk space on C (GB) | Free disk space on C (GB) | Total disk space on D (GB) | Free disk space on D (GB) | Total disk space on E (GB) | Free disk space on E (GB) |
|-----------|----------------------------|---------------------------|----------------------------|---------------------------|----------------------------|---------------------------|
| 24-1-2015 | 99 | 54 | 279 | 169 | 99 | 29 |
| 23-1-2015 | 99 | 54 | 279 | 169 | 99 | 29 |
| 22-1-2015 | 99 | 54 | 279 | 169 | 99 | 29 |
| 21-1-2015 | 99 | 54 | 279 | 169 | 99 | 29 |
| 20-1-2015 | 99 | 54 | 279 | 169 | 99 | 29 |
| 19-1-2015 | 99 | 54 | 279 | 169 | 99 | 29 |
| 18-1-2015 | 99 | 54 | 279 | 169 | 99 | 29 |

=====
 HARDDISK USAGE NIX_PRD_ORCDB1
 =====

| | Total disk space on C (GB) | Free disk space on C (GB) | Total disk space on D (GB) | Free disk space on D (GB) | Total disk space on E (GB) | Free disk space on E (GB) |
|-----------|----------------------------|---------------------------|----------------------------|---------------------------|----------------------------|---------------------------|
| 24-1-2015 | 136 | 68 | 136 | 27 | 136 | 50 |
| 23-1-2015 | 136 | 68 | 136 | 27 | 136 | 51 |
| 22-1-2015 | 136 | 68 | 136 | 27 | 136 | 52 |
| 21-1-2015 | 136 | 68 | 136 | 27 | 136 | 52 |
| 20-1-2015 | 136 | 68 | 136 | 27 | 136 | 52 |
| 19-1-2015 | 136 | 68 | 136 | 27 | 136 | 52 |
| 18-1-2015 | 136 | 68 | 136 | 27 | 136 | 52 |

Weekly SLA Customer Report

Customer NIX_Production
 Database ID 51



=====
 HARDDISK USAGE NIX_PRD_ORCDB2
 =====

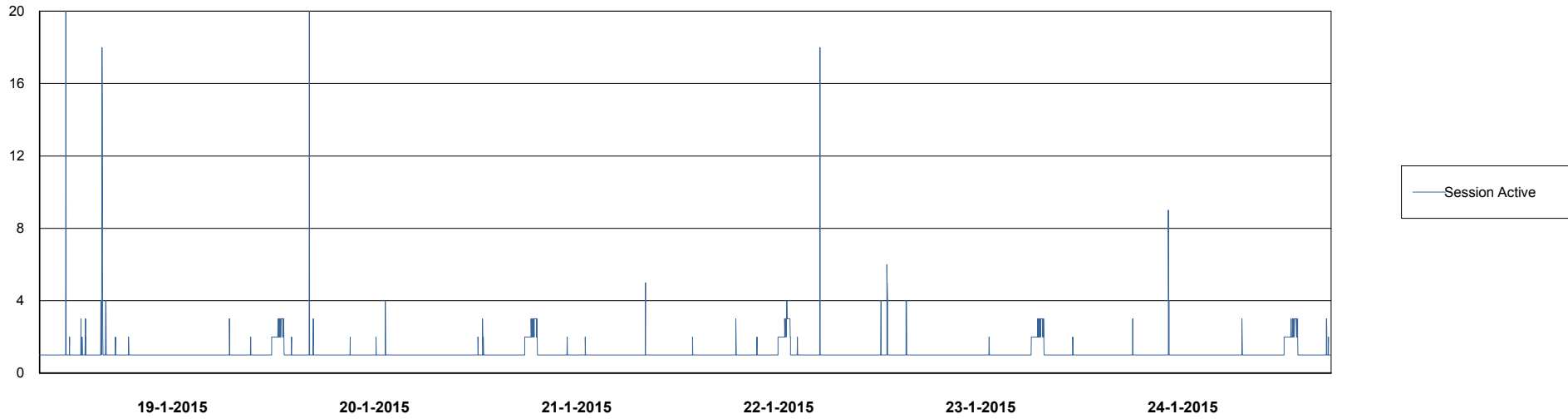
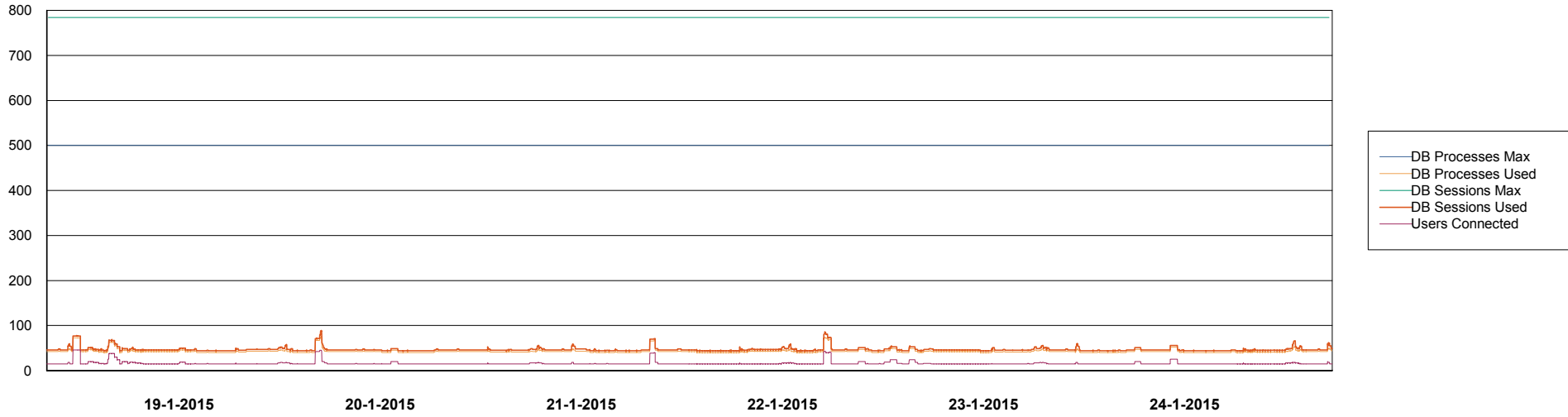
| | Total disk space on C (GB) | Free disk space on C (GB) | Total disk space on D (GB) | Free disk space on D (GB) | Total disk space on E (GB) | Free disk space on E (GB) |
|-----------|-------------------------------|------------------------------|-------------------------------|------------------------------|-------------------------------|------------------------------|
| 24-1-2015 | 279 | 68 | 279 | 51 | 279 | 140 |
| 23-1-2015 | 279 | 68 | 279 | 51 | 279 | 161 |
| 22-1-2015 | 279 | 68 | 279 | 51 | 279 | 166 |
| 21-1-2015 | 279 | 68 | 279 | 51 | 279 | 95 |
| 20-1-2015 | 279 | 68 | 279 | 51 | 279 | 69 |
| 19-1-2015 | 279 | 68 | 279 | 51 | 279 | 76 |
| 18-1-2015 | 279 | 70 | 279 | 51 | 279 | 100 |

Weekly SLA Customer Report

Customer NIX_Production
Database ID 51



DATABASE PERFORMANCE NIXDB_BI



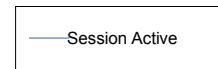
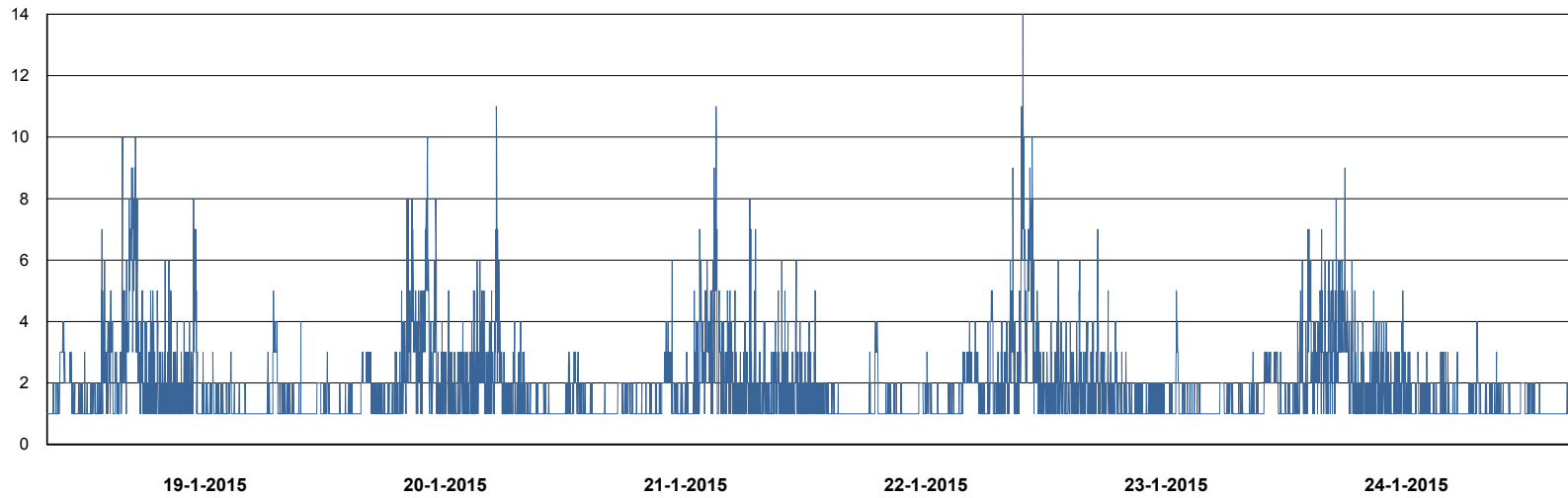
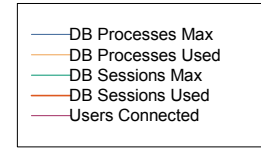
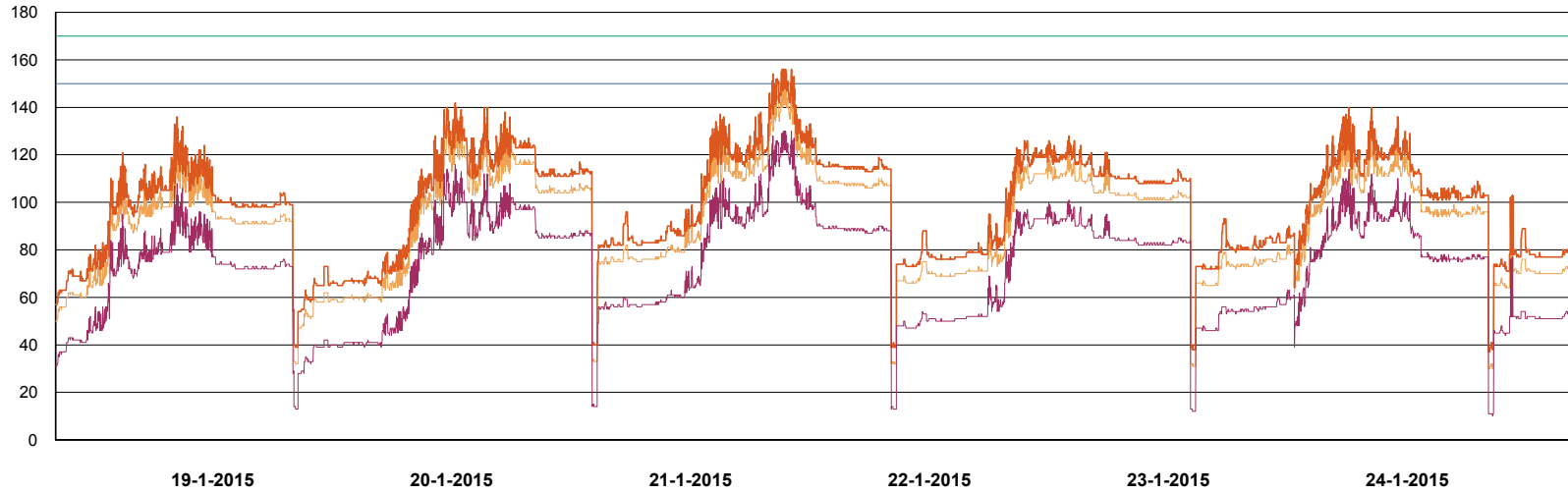
Weekly SLA Customer Report

Customer NIX_Production
Database ID 51



DATABASE PERFORMANCE

NIXDB_Production

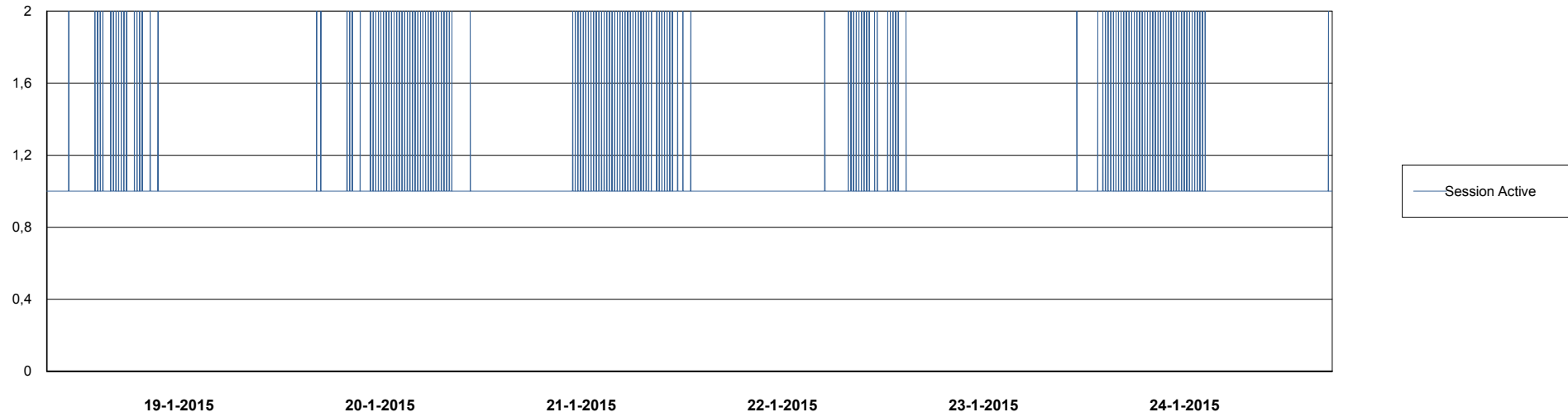
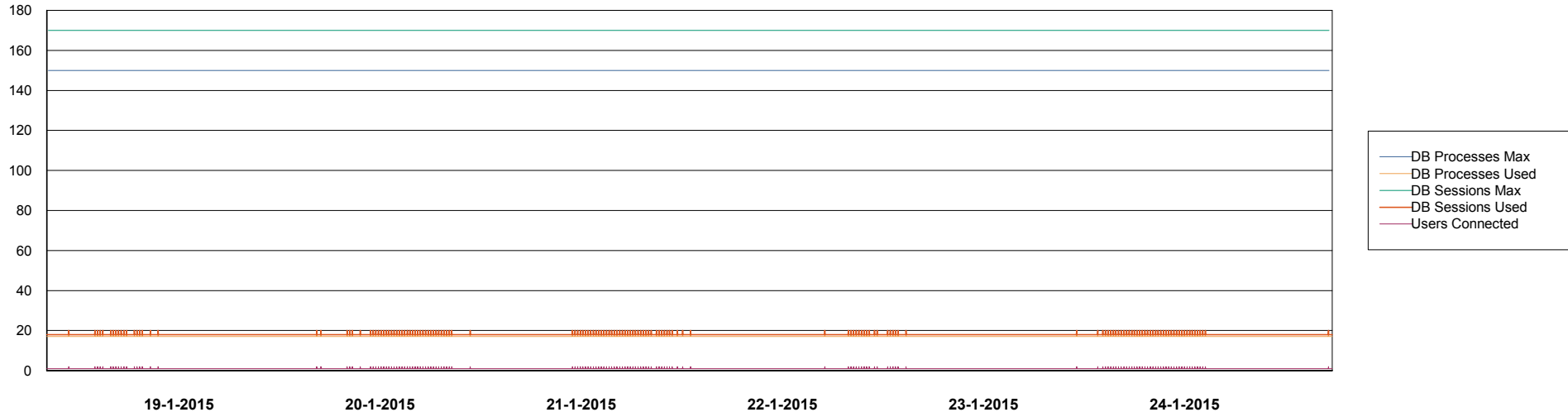


Weekly SLA Customer Report

Customer NIX_Production
Database ID 51



DATABASE PERFORMANCE NIXDB_Standby



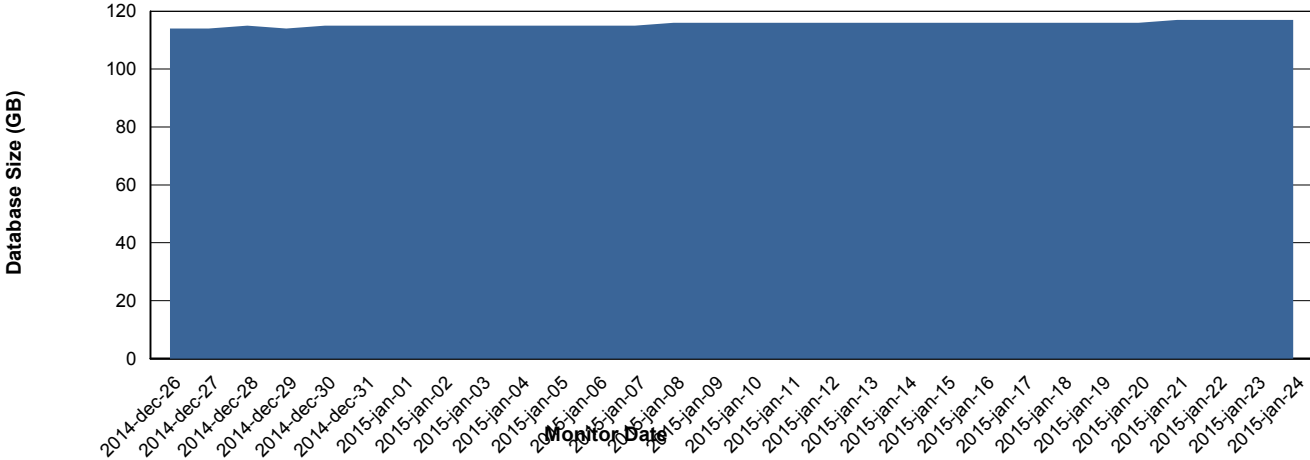
Weekly SLA Customer Report

Customer NIX_Production
Database ID 51



=====
DATABASE SIZE NIXDB_Production
=====
=====

Database growth over last month



Weekly SLA Customer Report

Customer NIX_Production
 Database ID 51



=====
 DATABASE TABLESPACES NIXDB_BI
 =====
 TOTAL DATABASE SIZE PER TABLESPACE

| Date | Tablespace Name | Filesize (Gb) | Usedsize (Gb) | Percentage free |
|-----------|-----------------|---------------|---------------|-----------------|
| 24-1-2015 | ABSDATA | 28 | 19 | 32 |
| | INDX | 44 | 30 | 32 |
| 23-1-2015 | ABSDATA | 28 | 19 | 32 |
| | INDX | 44 | 30 | 32 |
| 22-1-2015 | ABSDATA | 28 | 19 | 32 |
| | INDX | 44 | 30 | 32 |
| 21-1-2015 | ABSDATA | 28 | 19 | 32 |
| | INDX | 44 | 30 | 32 |
| 20-1-2015 | ABSDATA | 28 | 19 | 32 |
| | INDX | 44 | 30 | 32 |
| 19-1-2015 | ABSDATA | 28 | 19 | 32 |
| | INDX | 44 | 30 | 32 |
| 18-1-2015 | ABSDATA | 28 | 19 | 32 |
| | INDX | 44 | 30 | 32 |

Weekly SLA Customer Report

Customer NIX_Production
 Database ID 51



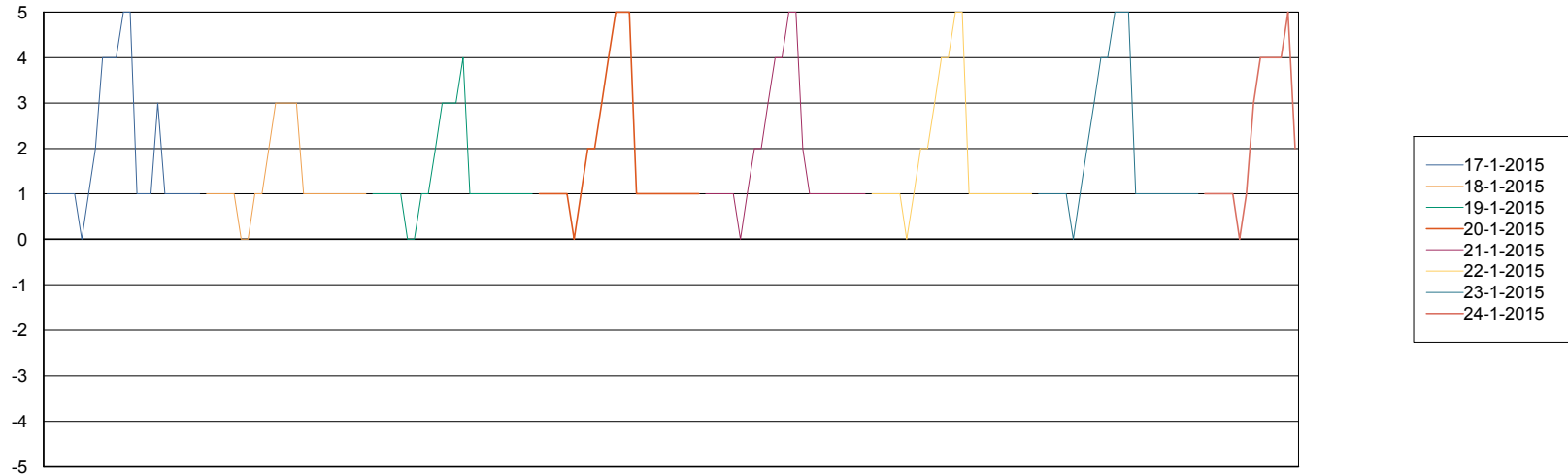
=====
 DATABASE TABLESPACES NIXDB_Production
 =====

TOTAL DATABASE SIZE PER TABLESPACE

| Date | Tablespace Name | Filesize (Gb) | Usedsize (Gb) | Percentage free |
|-----------|-----------------|---------------|---------------|-----------------|
| 24-1-2015 | ABSDATA | 40 | 30 | 25 |
| | INDX | 109 | 84 | 23 |
| 23-1-2015 | ABSDATA | 40 | 30 | 25 |
| | INDX | 109 | 84 | 23 |
| 22-1-2015 | ABSDATA | 40 | 30 | 25 |
| | INDX | 109 | 84 | 23 |
| 21-1-2015 | ABSDATA | 40 | 30 | 25 |
| | INDX | 109 | 84 | 23 |
| 20-1-2015 | ABSDATA | 40 | 30 | 25 |
| | INDX | 109 | 84 | 23 |
| 19-1-2015 | ABSDATA | 40 | 30 | 25 |
| | INDX | 109 | 84 | 23 |
| 18-1-2015 | ABSDATA | 40 | 30 | 25 |
| | INDX | 109 | 84 | 23 |

=====
 STANDBY DATABASE HEALTH NIX_Production
 =====

Recovery lag for last 7 days



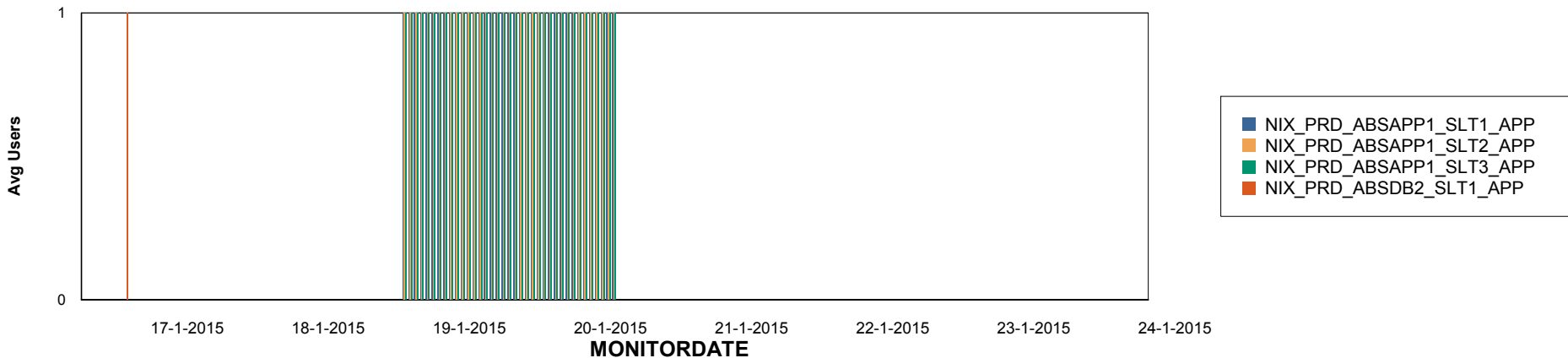
Weekly SLA Customer Report

Customer NIX_Production
Database ID 51

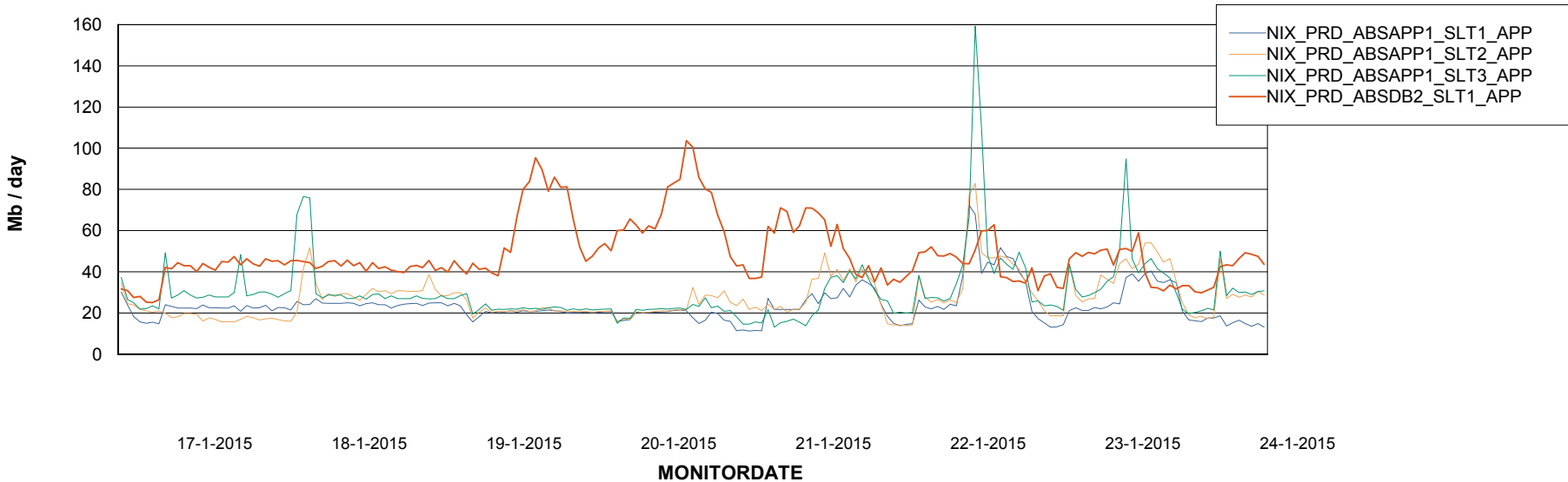


=====
ABSolute Application Server Services
=====

Disaster per ABS Server



Avg memory used per ABS Server Service



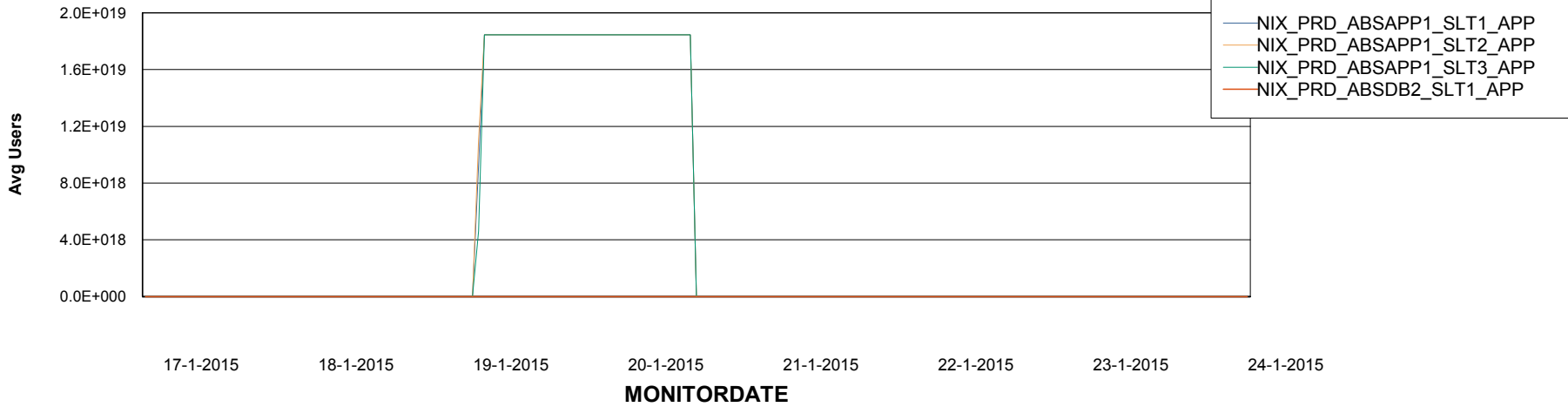
Weekly SLA Customer Report

Customer NIX_Production
Database ID 51



=====
ABSolute Application Server Services
=====

Avg users per day per ABS server



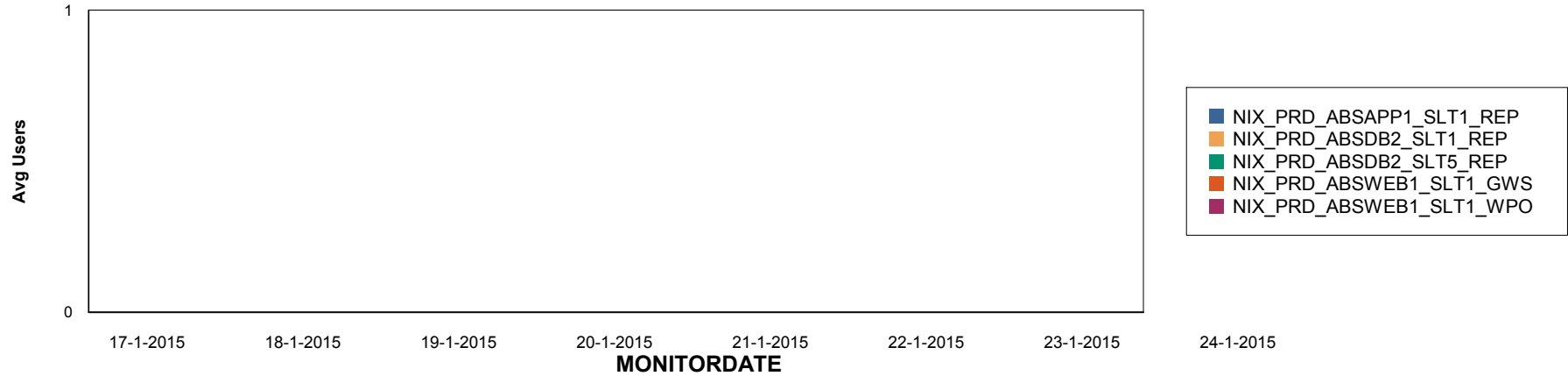
Weekly SLA Customer Report

Customer NIX_Production
Database ID 51

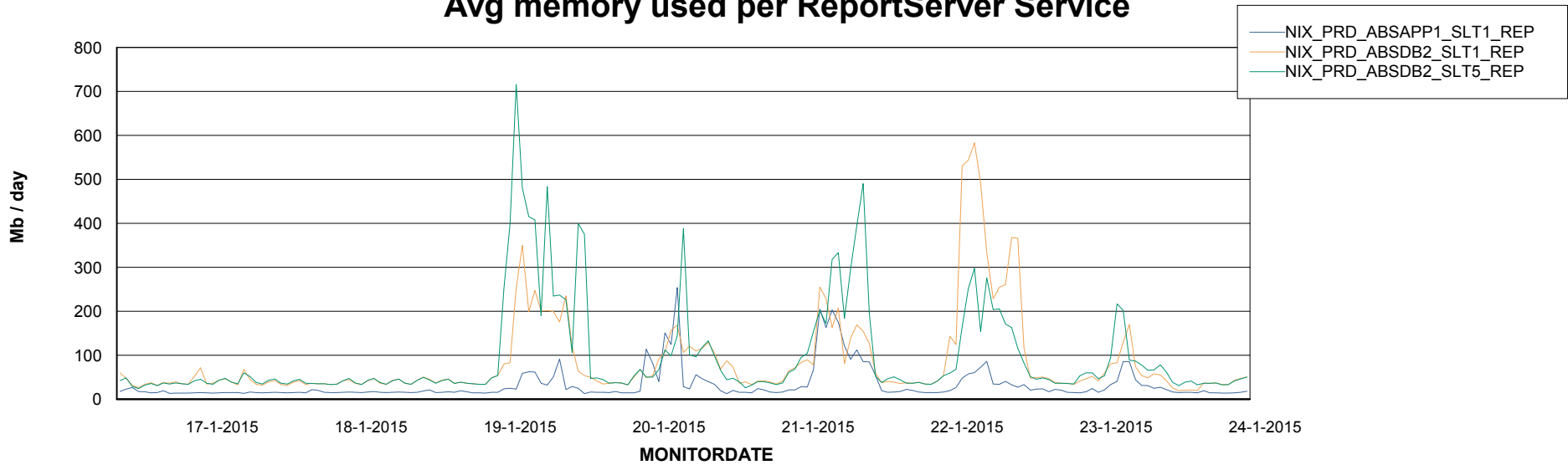


=====
ABSolute Application ReportServer Services
=====

Disaster per ReportServer



Avg memory used per ReportServer Service



Weekly SLA Customer Report

Customer NIX_Production
Database ID 51



Disaster per ABS component

