

# Weekly SLA Customer Report

Customer LLG\_Production  
 Database ID 53



=====  
 HARDDISK USAGE LLG\_PRD\_BI01  
 =====

	Total disk space on C (GB)	Free disk space on C (GB)
24-1-2015	559	386
23-1-2015	559	386
22-1-2015	559	386
21-1-2015	559	386
20-1-2015	559	386
19-1-2015	559	386
18-1-2015	559	386

=====  
 HARDDISK USAGE LLG\_PRD\_OR01  
 =====

	Total disk space on C (GB)	Free disk space on C (GB)	Total disk space on D (GB)	Free disk space on D (GB)
24-1-2015	279	177	600	259
23-1-2015	279	177	600	261
22-1-2015	279	177	600	263
21-1-2015	279	177	600	265
20-1-2015	279	177	600	266
19-1-2015	279	177	600	273
18-1-2015	279	177	600	291

## Weekly SLA Customer Report

Customer      LLG\_Production  
 Database ID    53



=====  
 HARDDISK USAGE    LLG\_PRD\_OR2  
 =====

	Total disk space on C (GB)	Free disk space on C (GB)	Total disk space on D (GB)	Free disk space on D (GB)
24-1-2015	293	248	545	368
23-1-2015	293	248	545	369
22-1-2015	293	248	545	370
21-1-2015	293	248	545	371
20-1-2015	293	248	545	372
19-1-2015	293	248	545	382
18-1-2015	293	248	545	396

=====  
 HARDDISK USAGE    LLG\_PRD\_vABS01  
 =====

	Total disk space on C (GB)	Free disk space on C (GB)	Total disk space on D (GB)	Free disk space on D (GB)
24-1-2015	150	37	150	144
23-1-2015	150	37	150	144
22-1-2015	150	37	150	144
21-1-2015	150	37	150	144
20-1-2015	150	45	150	144
19-1-2015	150	28	150	144
18-1-2015	150	22	150	144

## Weekly SLA Customer Report

Customer      LLG\_Production  
 Database ID    53



=====  
 HARDDISK USAGE    LLG\_PRD\_vABS02  
 =====

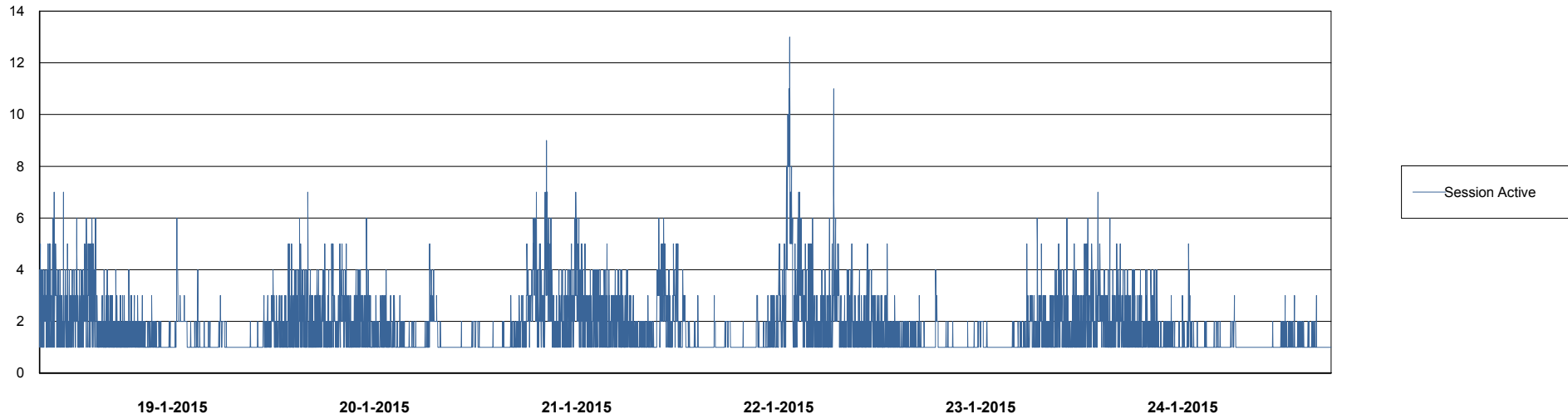
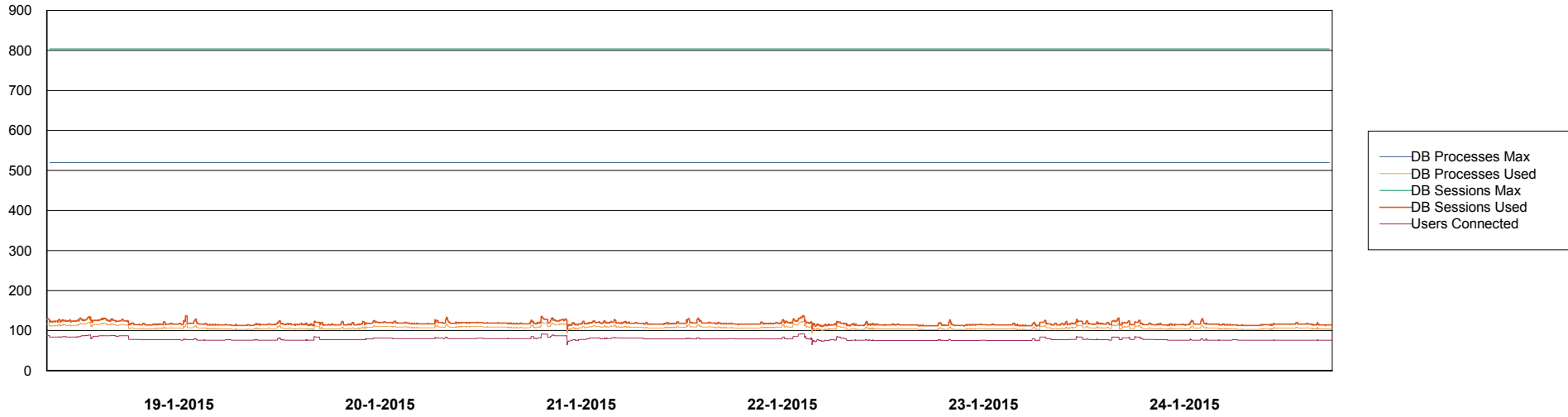
	Total disk space on C (GB)	Free disk space on C (GB)	Total disk space on D (GB)	Free disk space on D (GB)
24-1-2015	150	74	150	126
23-1-2015	150	74	150	126
22-1-2015	150	74	150	126
21-1-2015	150	79	150	126
20-1-2015	150	85	150	126
19-1-2015	150	61	150	126
18-1-2015	150	52	150	126

# Weekly SLA Customer Report

Customer LLG\_Production  
Database ID 53



DATABASE PERFORMANCE LLGDB\_Production

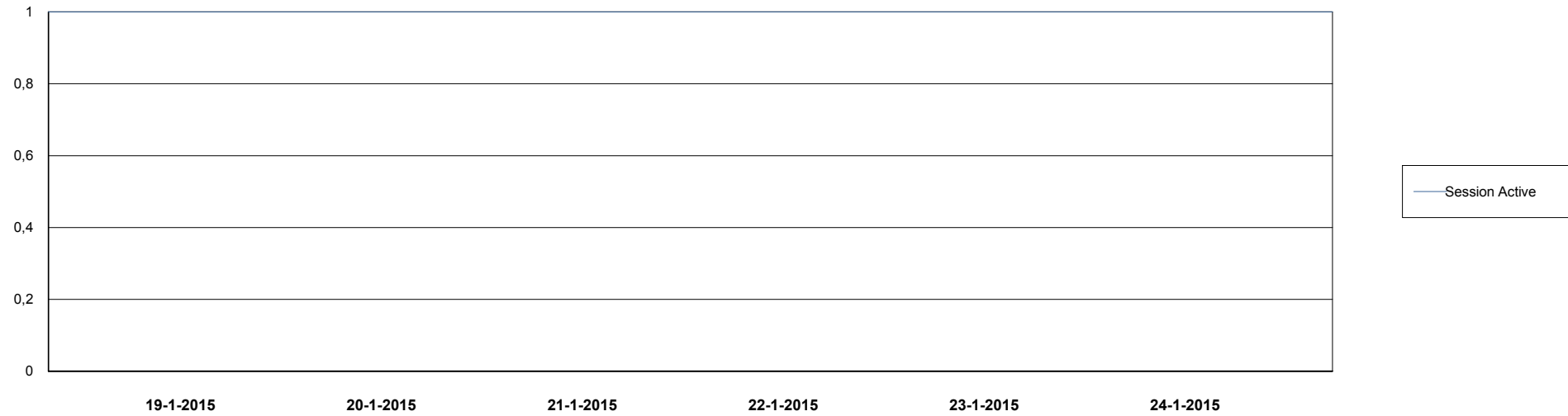
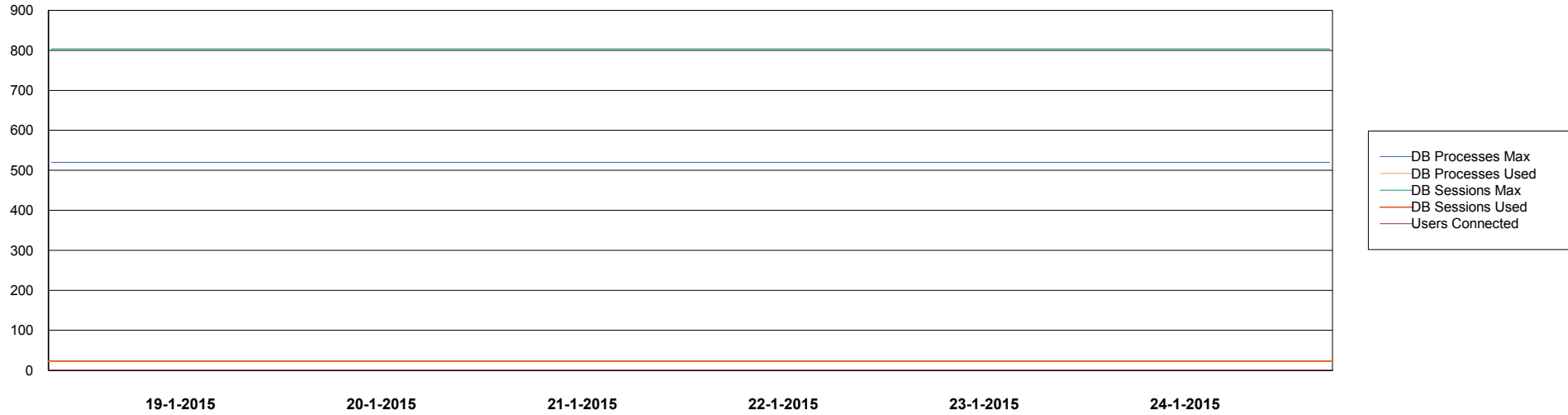


# Weekly SLA Customer Report

Customer LLG\_Production  
Database ID 53



DATABASE PERFORMANCE LLGDB\_Standby



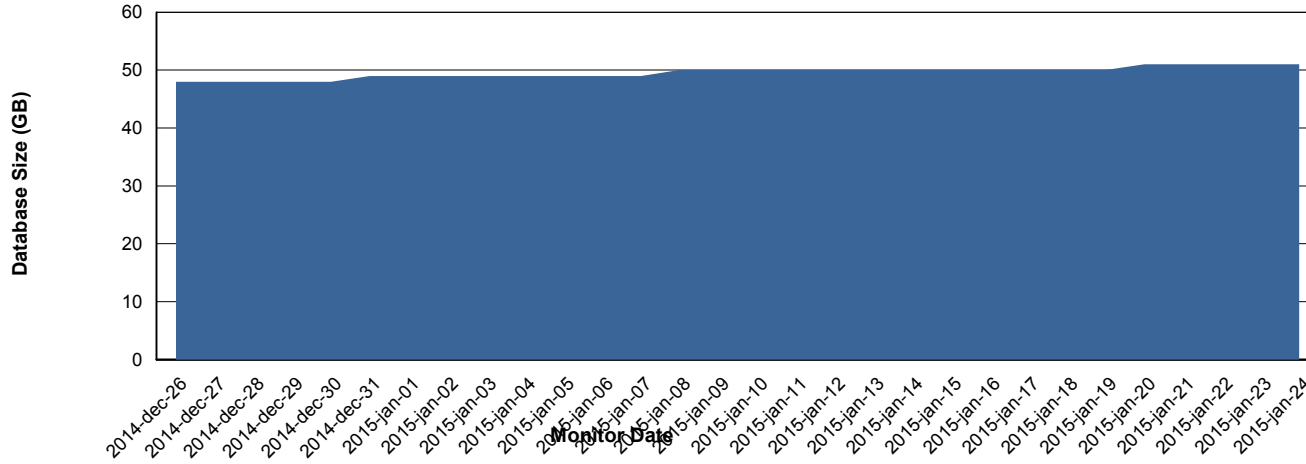
# Weekly SLA Customer Report

Customer LLG\_Production  
 Database ID 53



=====  
 DATABASE SIZE LLGDB\_Production  
 =====

## Database growth over last month



=====  
 DATABASE TABLESPACES LLGDB\_Production  
 =====

### TOTAL DATABASE SIZE PER TABLESPACE

Date	Tablespace Name	Filesize (Gb)	Usedsize (Gb)	Percentage free
24-1-2015	ABSDATA	20	18	10
	INDX	40	31	23
23-1-2015	ABSDATA	20	18	10
	INDX	40	31	23
22-1-2015	ABSDATA	20	18	10
	INDX	40	31	23
21-1-2015	ABSDATA	20	18	10
	INDX	40	31	23
20-1-2015	ABSDATA	20	18	10
	INDX	40	31	23
19-1-2015	ABSDATA	20	18	10
	INDX	40	31	23
18-1-2015	ABSDATA	20	17	15
	INDX	40	30	25

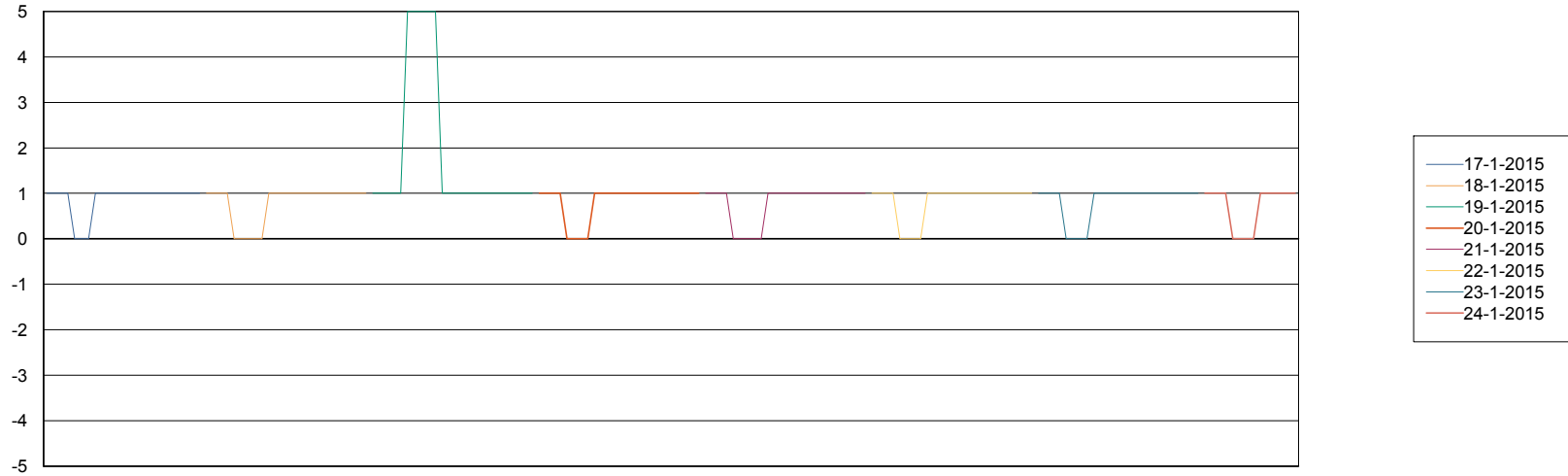
# Weekly SLA Customer Report

Customer LLG\_Production  
Database ID 53



=====  
STANDBY DATABASE HEALTH LLG\_Production  
=====

### Recovery lag for last 7 days



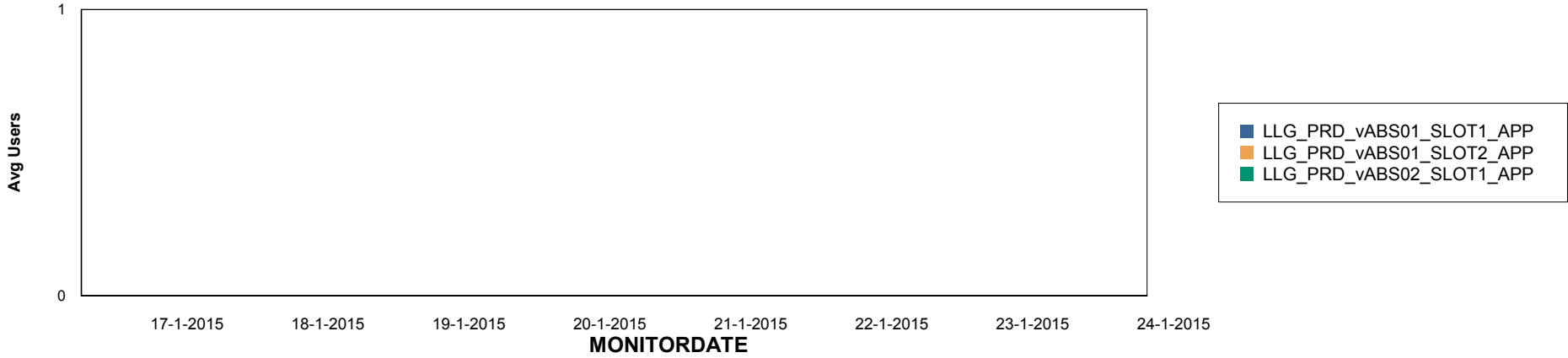
# Weekly SLA Customer Report

Customer LLG\_Production  
Database ID 53

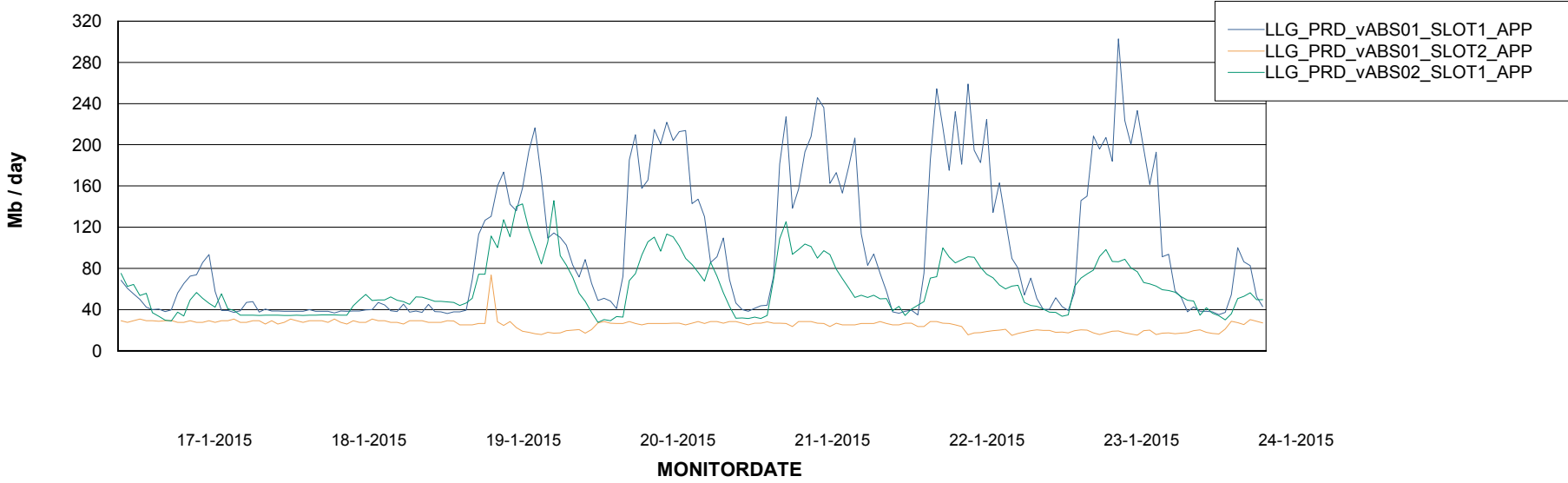


=====  
ABSolute Application Server Services  
=====

## Disaster per ABS Server



## Avg memory used per ABS Server Service



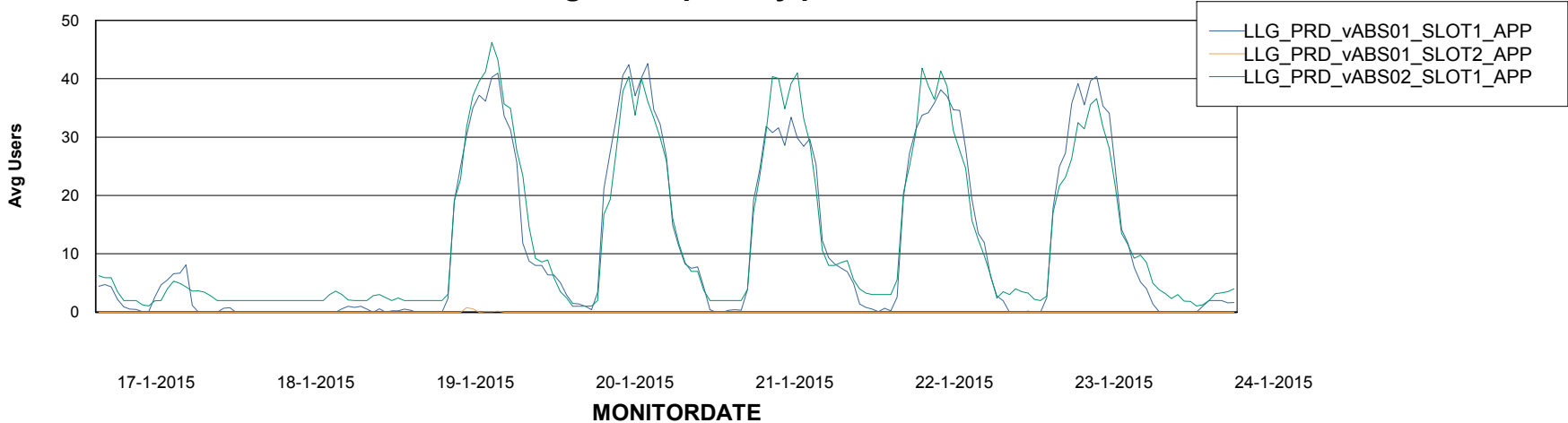
# Weekly SLA Customer Report

Customer LLG\_Production  
Database ID 53



=====  
ABSolute Application Server Services  
=====

### Avg users per day per ABS server



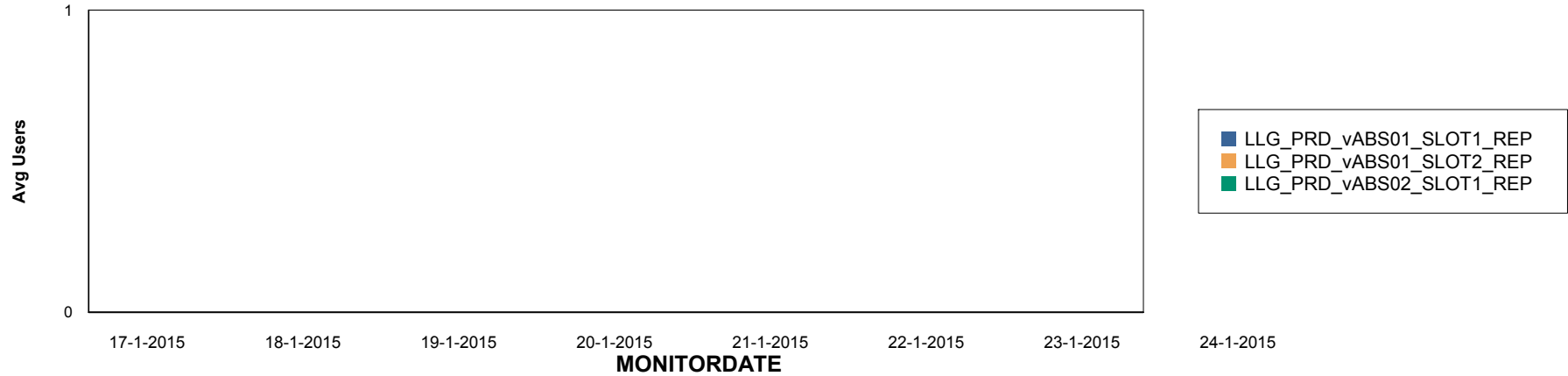
# Weekly SLA Customer Report

Customer LLG\_Production  
Database ID 53

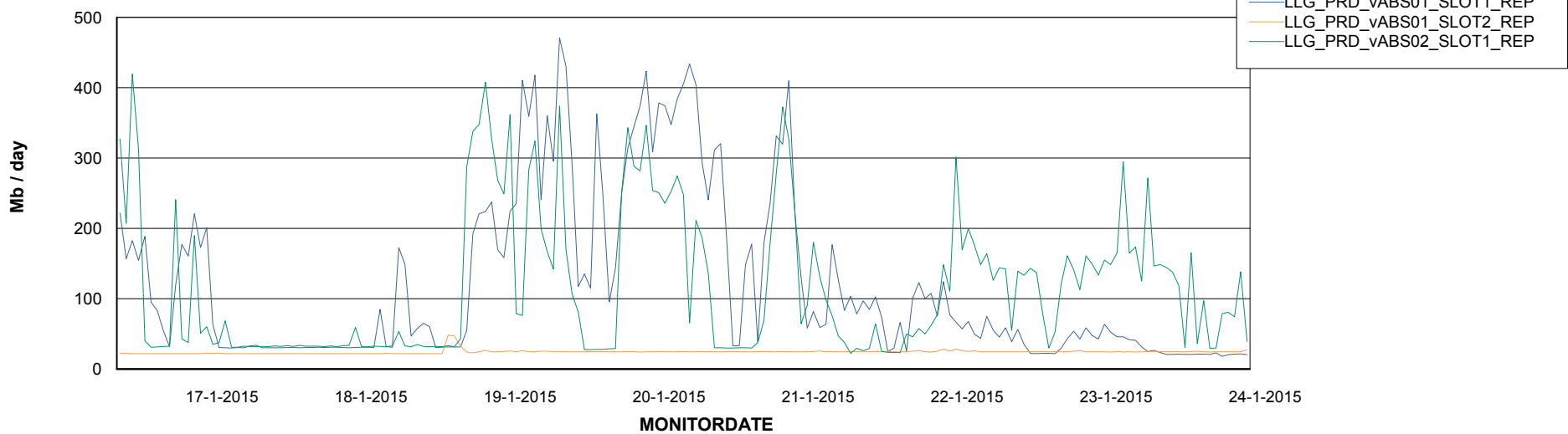


=====  
ABSolute Application ReportServer Services  
=====

## Disaster per ReportServer



## Avg memory used per ReportServer Service



# Weekly SLA Customer Report

Customer LLG\_Production  
Database ID 53



## Disaster per ABS component

