

# Weekly SLA Customer Report

Customer JWR Production  
 Database ID 43



=====  
 HARDDISK USAGE JWR\_PRD\_JWR-ABS-01  
 =====

	Used disk space on / (GB)	Total disk space on / (GB)	Free disk space on / (GB)
24-1-2015	27	49	20
23-1-2015	27	49	20
22-1-2015	27	49	20
21-1-2015	28	49	19
20-1-2015	27	49	20
19-1-2015	27	49	20
18-1-2015	27	49	20

=====  
 HARDDISK USAGE JWR\_PRD\_JWR-ABS-02  
 =====

	Used disk space on / (GB)	Total disk space on / (GB)	Free disk space on / (GB)
24-1-2015	27	49	19
23-1-2015	27	49	19
22-1-2015	27	49	19
21-1-2015	28	49	19
20-1-2015	27	49	19
19-1-2015	27	49	19
18-1-2015	27	49	19

## Weekly SLA Customer Report

Customer      JWR Production  
 Database ID    43



=====  
 HARDDISK USAGE    JWR\_PRD\_JWR-ODB-01  
 =====

	Used disk space on / (GB)	Total disk space on / (GB)	Free disk space on / (GB)
24-1-2015	81	148	59
23-1-2015	82	148	59
22-1-2015	79	148	62
21-1-2015	74	148	66
20-1-2015	76	148	65
19-1-2015	76	95	14
18-1-2015	75	90	11

=====  
 HARDDISK USAGE    JWR\_PRD\_JWR-ODB-02  
 =====

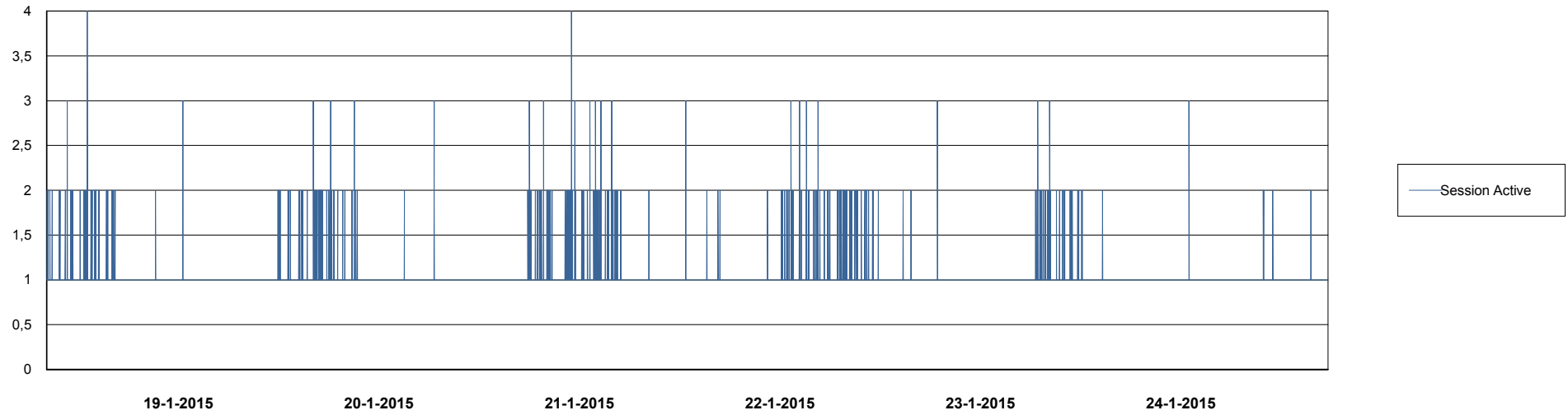
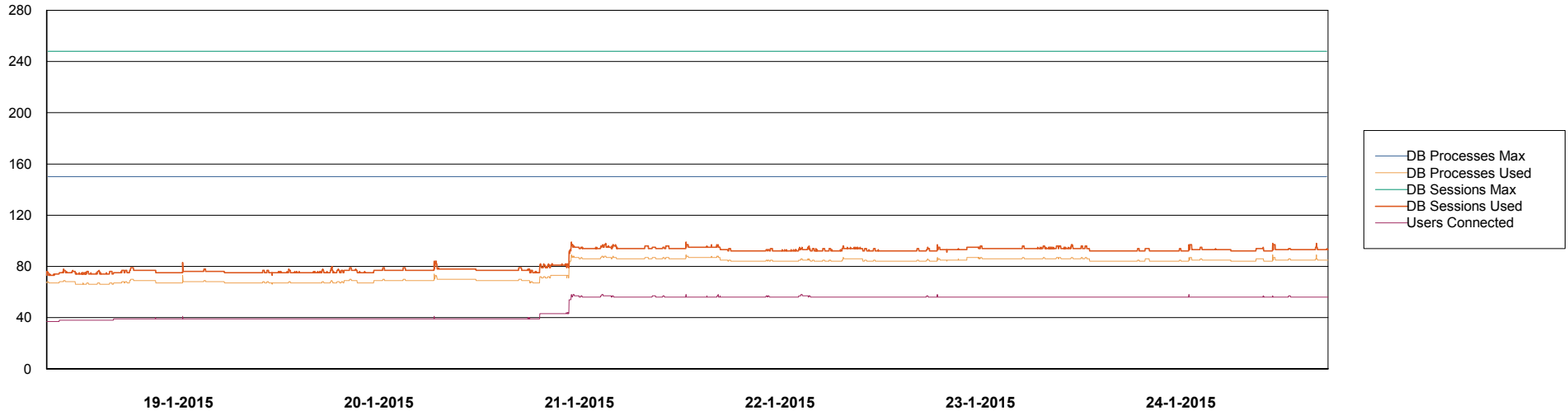
	Used disk space on / (GB)	Total disk space on / (GB)	Free disk space on / (GB)
24-1-2015	91	138	40
23-1-2015	91	138	40
22-1-2015	92	138	38
21-1-2015	93	138	38
20-1-2015	93	138	38
19-1-2015	93	138	38
18-1-2015	93	138	38

# Weekly SLA Customer Report

Customer JWR Production  
Database ID 43



DATABASE PERFORMANCE JWRDB\_Production



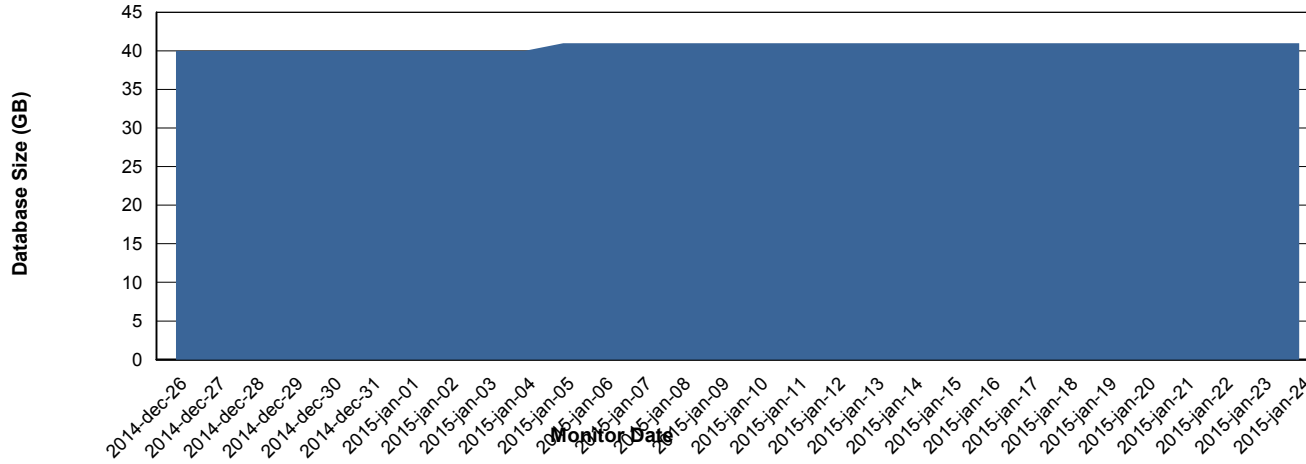
# Weekly SLA Customer Report

Customer JWR Production  
 Database ID 43



=====  
 DATABASE SIZE JWRDB\_Production  
 =====

## Database growth over last month



=====  
 DATABASE TABLESPACES JWRDB\_Production  
 =====

### TOTAL DATABASE SIZE PER TABLESPACE

Date	Tablespace Name	Filesize (Gb)	Usedsize (Gb)	Percentage free
24-1-2015	ABSDATA	18	12	33
	INDX	38	28	26
23-1-2015	ABSDATA	18	12	33
	INDX	38	28	26
22-1-2015	ABSDATA	18	12	33
	INDX	38	28	26
21-1-2015	ABSDATA	15	12	20
	INDX	32	28	13
20-1-2015	ABSDATA	15	12	20
	INDX	32	28	13
19-1-2015	ABSDATA	15	12	20
	INDX	32	28	13
18-1-2015	ABSDATA	15	12	20
	INDX	32	28	13

## Weekly SLA Customer Report

---

Customer     JWR Production  
Database ID   43



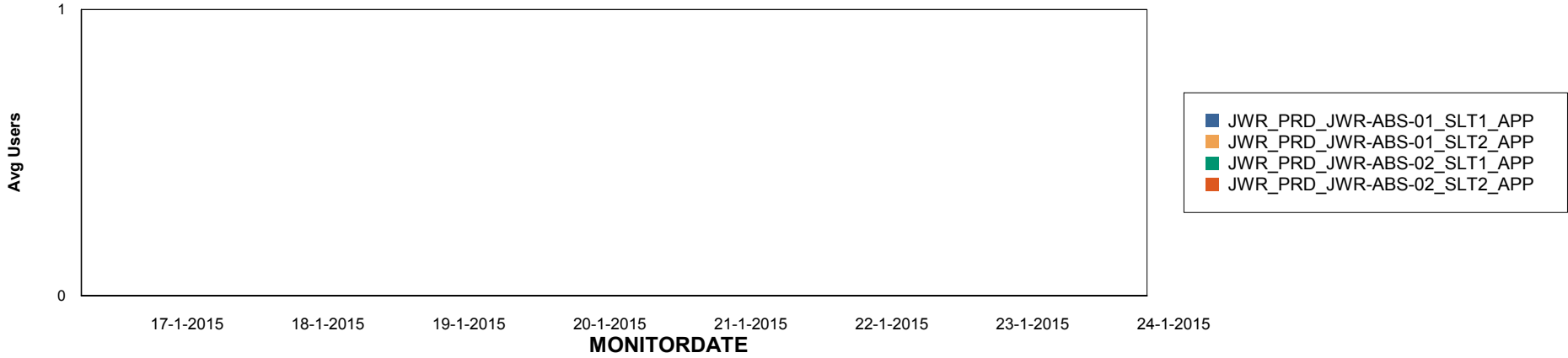
# Weekly SLA Customer Report

Customer JWR Production  
Database ID 43

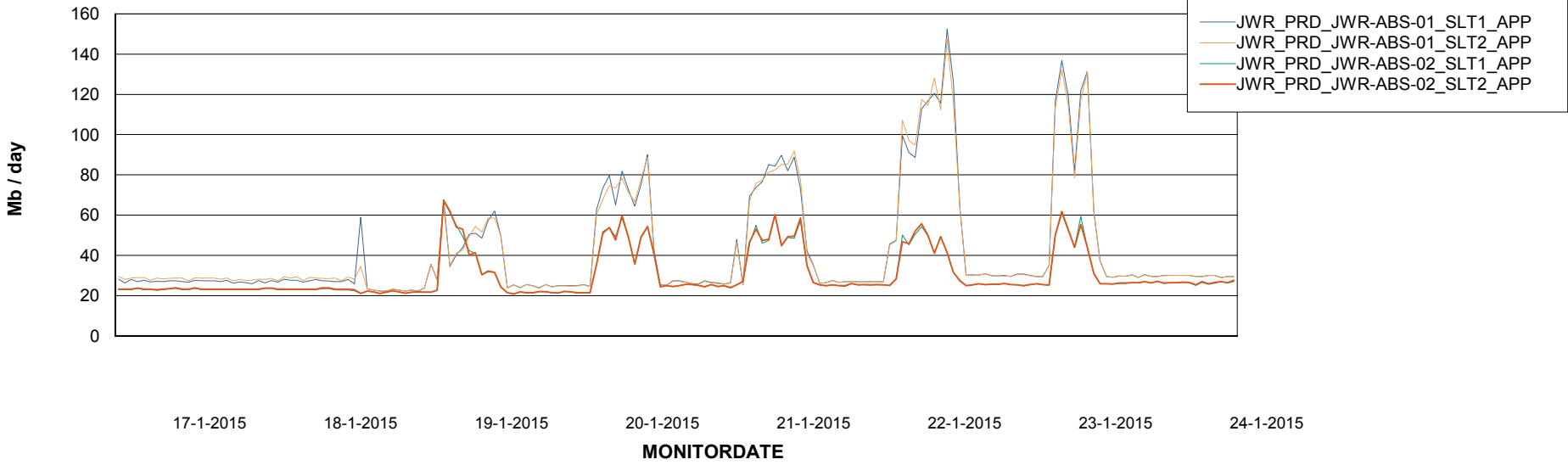


=====  
ABSolute Application Server Services  
=====

## Disaster per ABS Server



## Avg memory used per ABS Server Service



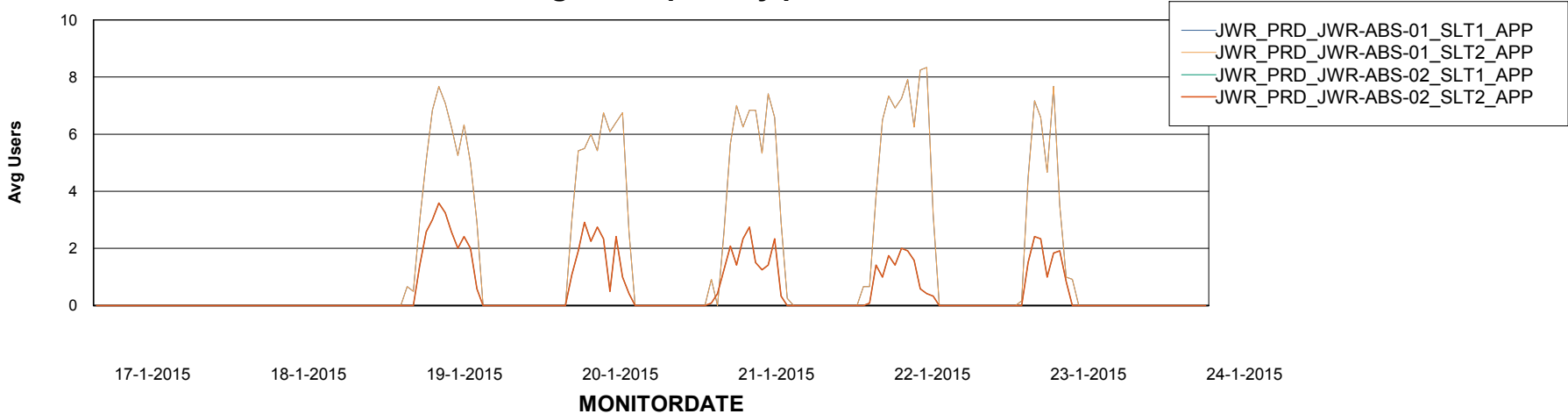
# Weekly SLA Customer Report

Customer JWR Production  
Database ID 43



=====  
ABSolute Application Server Services  
=====

### Avg users per day per ABS server



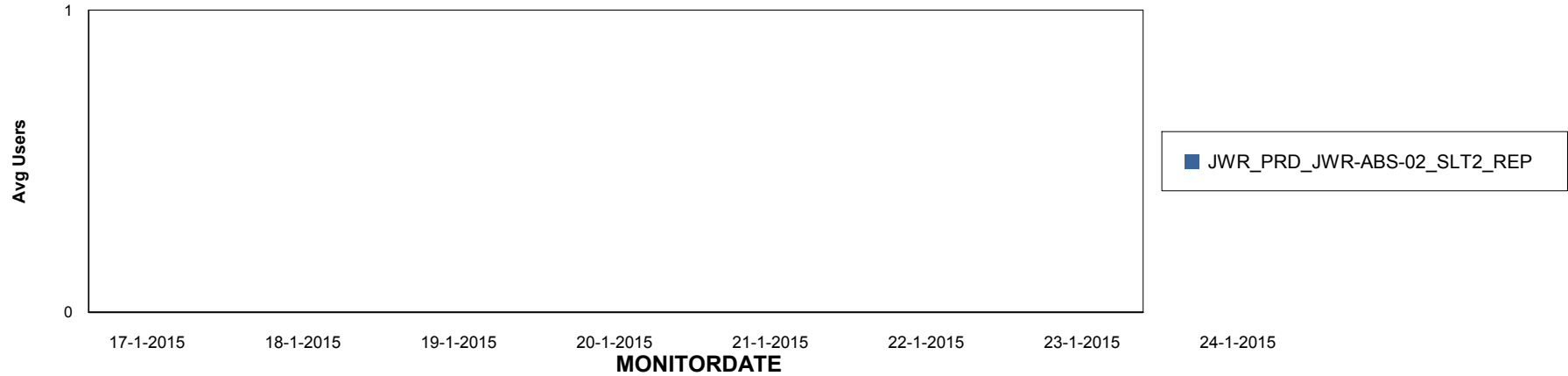
# Weekly SLA Customer Report

Customer JWR Production  
Database ID 43

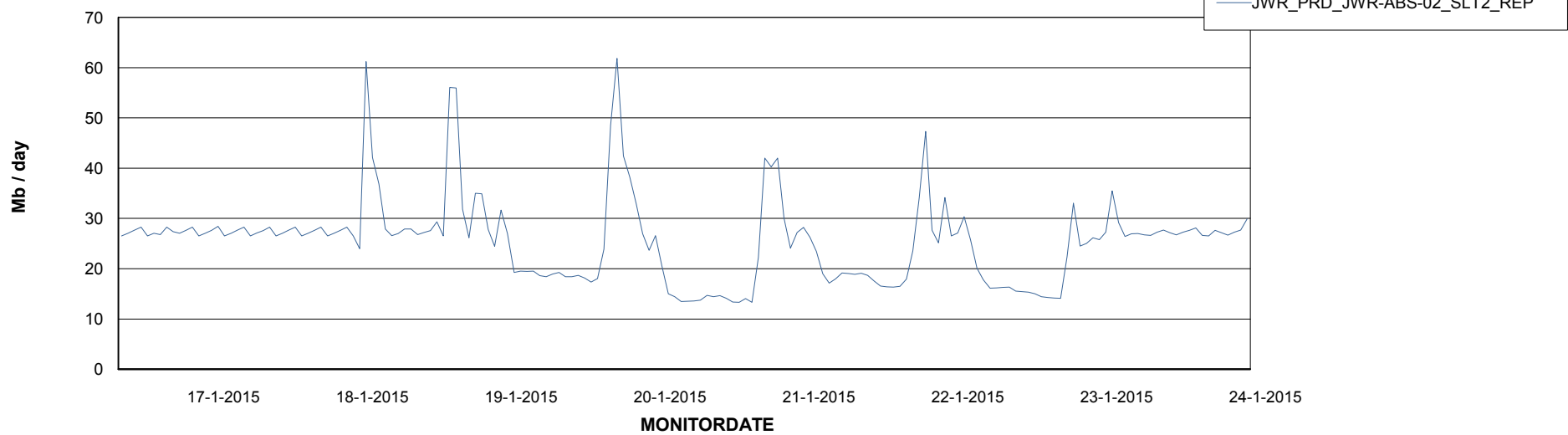


=====  
ABSolute Application ReportServer Services  
=====

## Disaster per ReportServer



## Avg memory used per ReportServer Service



# Weekly SLA Customer Report

Customer JWR Production  
Database ID 43



## Disaster per ABS component

