

Weekly SLA Customer Report

Customer BCH Production
 Database ID 28



=====
 HARDDISK USAGE BCH_PRD_ORCDB1
 =====

	Total disk space on C (GB)	Free disk space on C (GB)	Total disk space on D (GB)	Free disk space on D (GB)
24-1-2015	278	143	278	101
23-1-2015	278	144	278	97
22-1-2015	278	145	278	88
21-1-2015	278	144	278	91
20-1-2015	278	144	278	94
19-1-2015	278	144	278	97
18-1-2015	278	144	278	99

=====
 HARDDISK USAGE BCH_PRD_ORCDB2
 =====

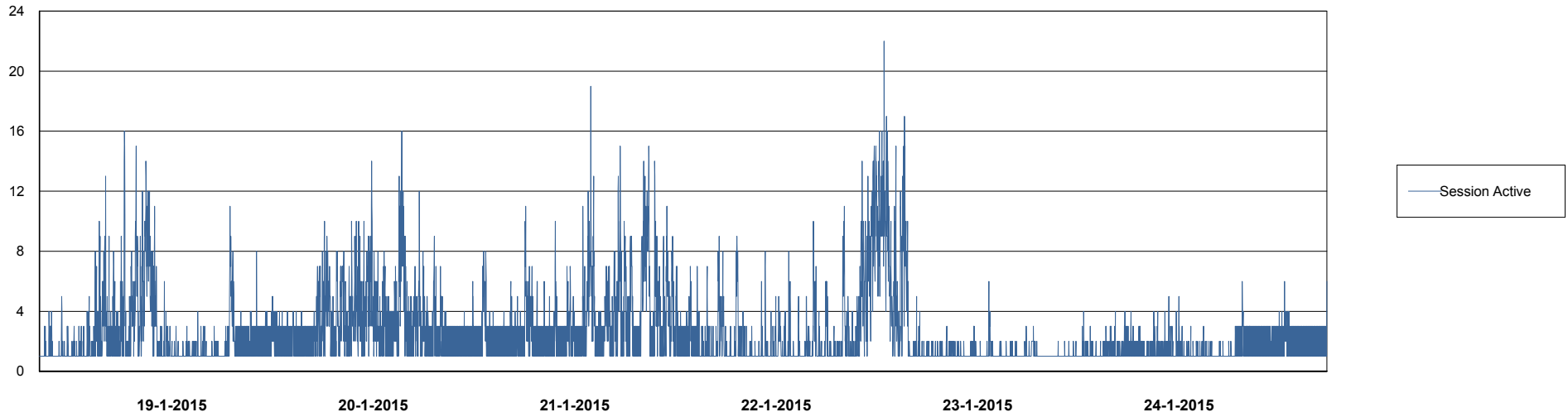
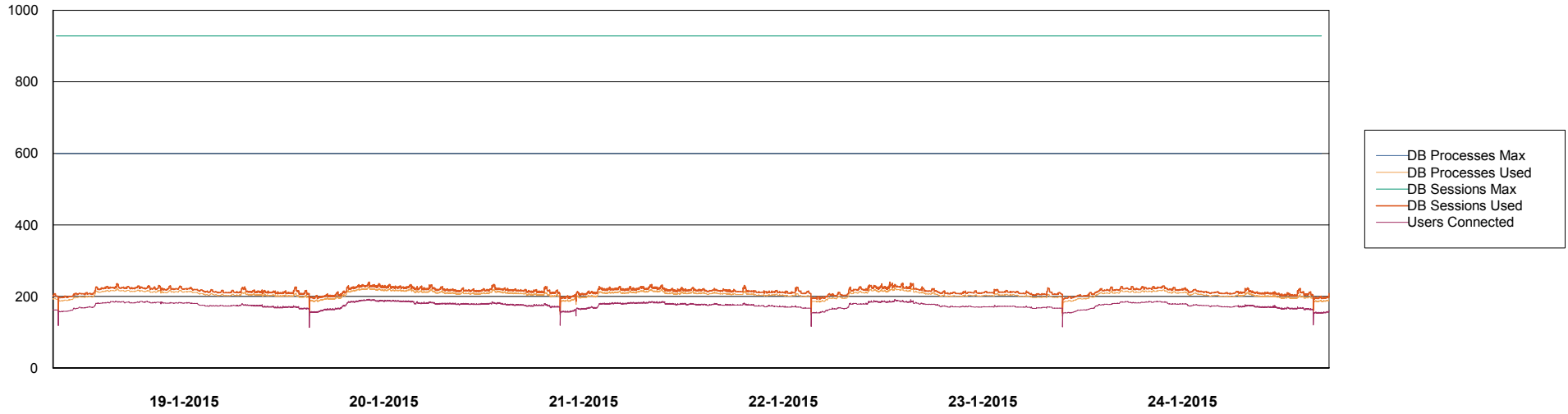
	Total disk space on C (GB)	Free disk space on C (GB)	Total disk space on D (GB)	Free disk space on D (GB)
24-1-2015	278	173	278	98
23-1-2015	278	173	278	94
22-1-2015	278	173	278	85
21-1-2015	278	173	278	88
20-1-2015	278	173	278	91
19-1-2015	278	173	278	94
18-1-2015	278	173	278	96

Weekly SLA Customer Report

Customer BCH Production
Database ID 28



DATABASE PERFORMANCE BCHDB_Production

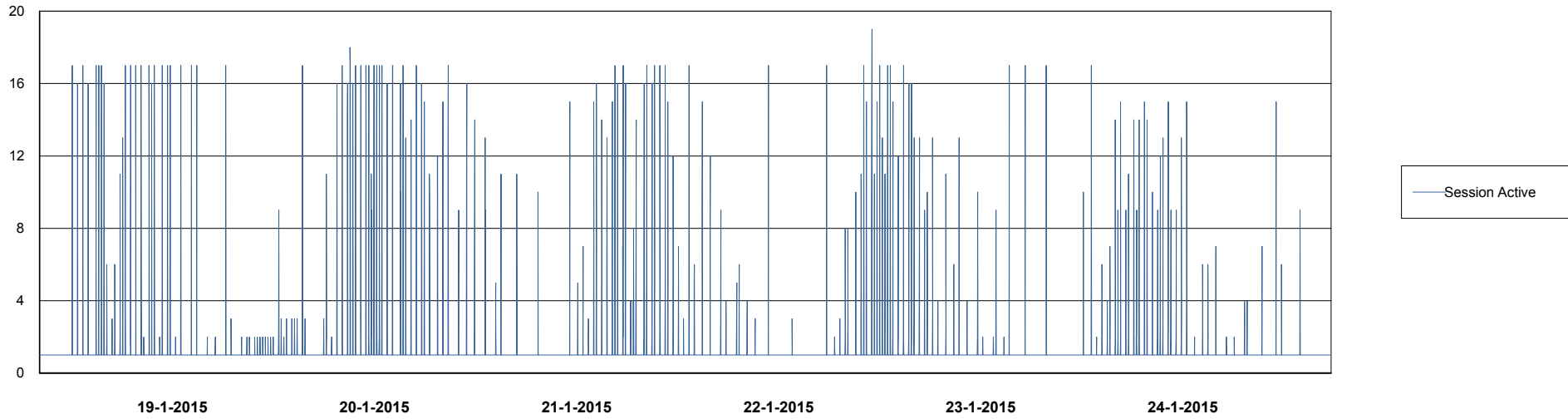
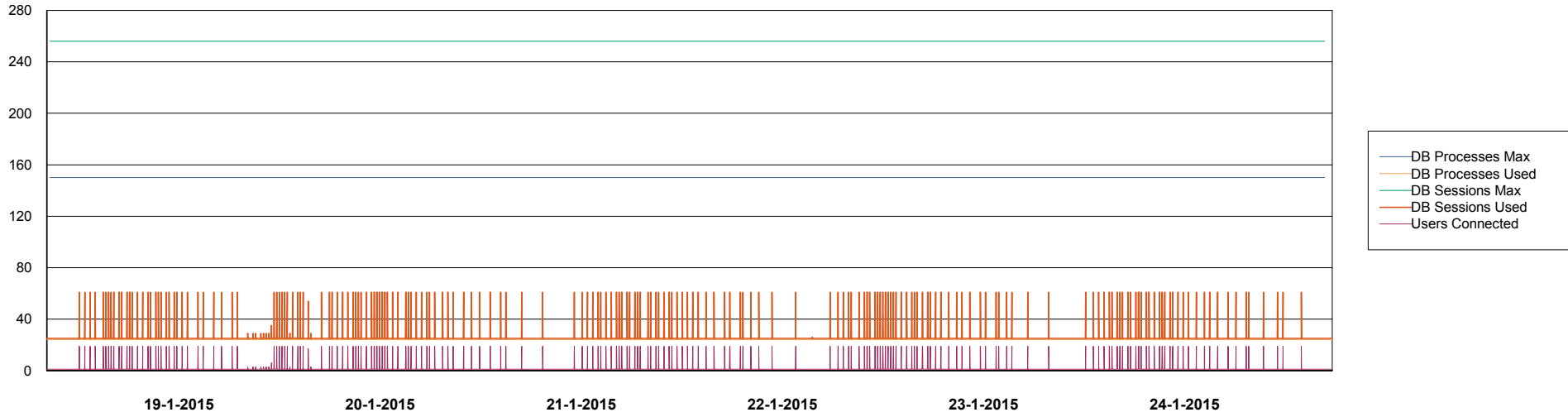


Weekly SLA Customer Report

Customer BCH Production
Database ID 28



DATABASE PERFORMANCE BCHDB_Standby



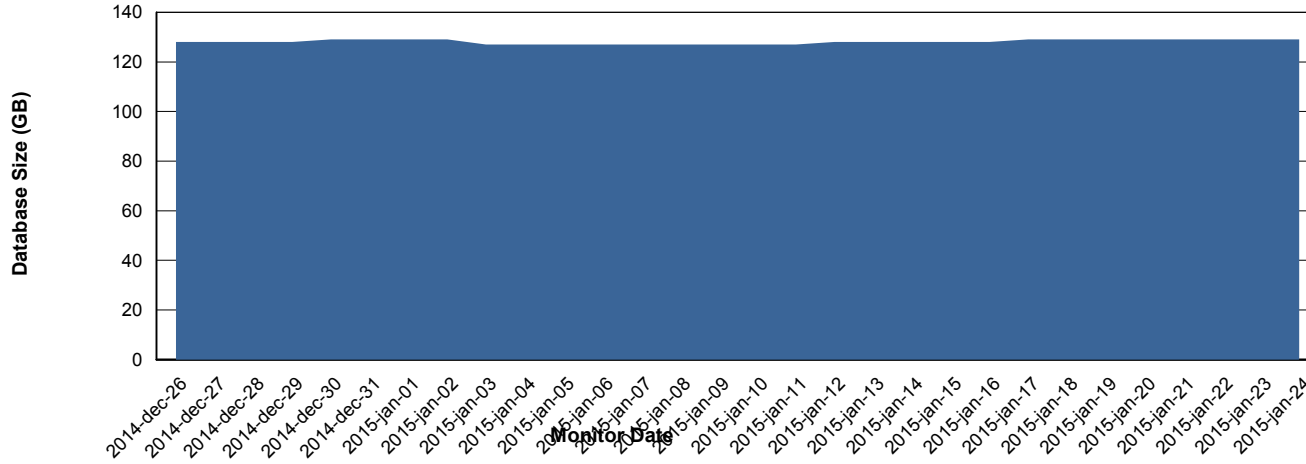
Weekly SLA Customer Report

Customer BCH Production
 Database ID 28



=====
 DATABASE SIZE BCHDB_Production
 =====

Database growth over last month



=====
 DATABASE TABLESPACES BCHDB_Production
 =====

TOTAL DATABASE SIZE PER TABLESPACE

Date	Tablespace Name	Filesize (Gb)	Usedsize (Gb)	Percentage free
24-1-2015	ABSDATA	42	24	43
	INDX	138	103	25
23-1-2015	ABSDATA	42	24	43
	INDX	138	103	25
22-1-2015	ABSDATA	42	24	43
	INDX	138	103	25
21-1-2015	ABSDATA	42	24	43
	INDX	138	103	25
20-1-2015	ABSDATA	42	24	43
	INDX	138	103	25
19-1-2015	ABSDATA	42	24	43
	INDX	138	103	25
18-1-2015	ABSDATA	42	24	43
	INDX	138	103	25

Weekly SLA Customer Report

Customer BCH Production
Database ID 28



=====
STANDBY DATABASE HEALTH BCH Production
=====

Recovery lag for last 7 days

