

Weekly SLA Customer Report

Customer NIX_Production
 Database ID 51



=====
 HARDDISK USAGE NIX_PRD_ABSAPP1
 =====

	Total disk space on C (GB)	Free disk space on C (GB)
17-1-2015	136	90
16-1-2015	136	90
15-1-2015	136	90
14-1-2015	136	90
13-1-2015	136	90
12-1-2015	136	90
11-1-2015	136	90

=====
 HARDDISK USAGE NIX_PRD_ABSWEB1
 =====

	Total disk space on C (GB)	Free disk space on C (GB)	Total disk space on D (GB)
17-1-2015	930	749	3
16-1-2015	930	749	3
15-1-2015	930	749	3
14-1-2015	930	750	3
13-1-2015	930	750	3
12-1-2015	930	750	3
11-1-2015	930	750	3

Weekly SLA Customer Report

Customer NIX_Production
 Database ID 51



=====
 HARDDISK USAGE NIX_PRD_ORACLE_BI1
 =====

	Total disk space on C (GB)	Free disk space on C (GB)	Total disk space on D (GB)	Free disk space on D (GB)	Total disk space on E (GB)	Free disk space on E (GB)
17-1-2015	99	54	279	169	99	29
16-1-2015	99	54	279	169	99	29
15-1-2015	99	54	279	169	99	29
14-1-2015	99	55	279	169	99	29
13-1-2015	99	54	279	169	99	29
12-1-2015	99	54	279	169	99	29
11-1-2015	99	54	279	169	99	29

=====
 HARDDISK USAGE NIX_PRD_ORCDB1
 =====

	Total disk space on C (GB)	Free disk space on C (GB)	Total disk space on D (GB)	Free disk space on D (GB)	Total disk space on E (GB)	Free disk space on E (GB)
17-1-2015	136	68	136	27	136	50
16-1-2015	136	68	136	27	136	52
15-1-2015	136	68	136	27	136	52
14-1-2015	136	68	136	27	136	53
13-1-2015	136	68	136	27	136	53
12-1-2015	136	68	136	27	136	53
11-1-2015	136	68	136	27	136	53

Weekly SLA Customer Report

Customer NIX_Production
 Database ID 51



=====
 HARDDISK USAGE NIX_PRD_ORCDB2
 =====

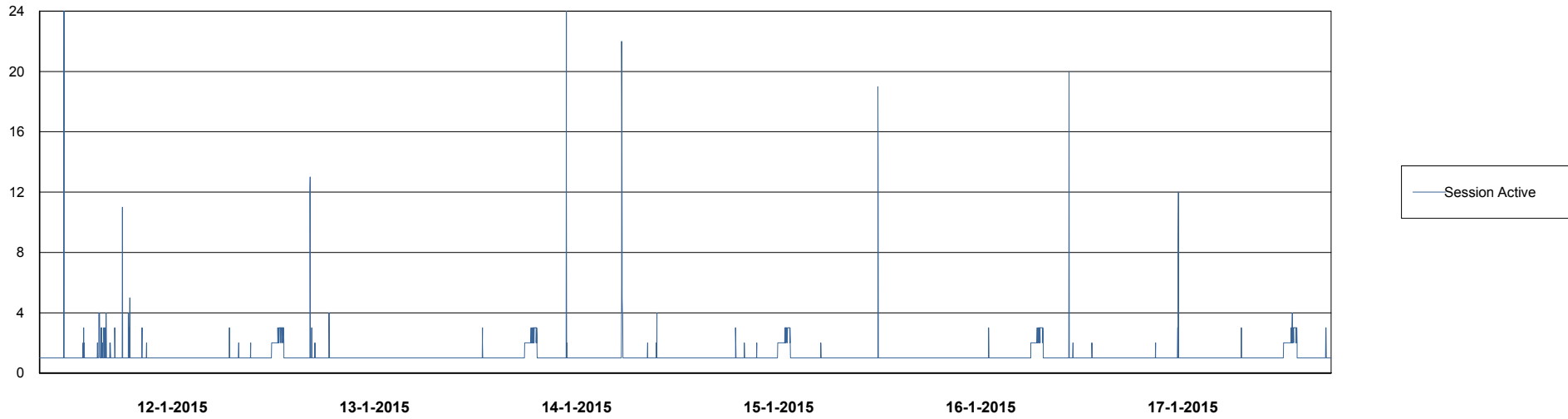
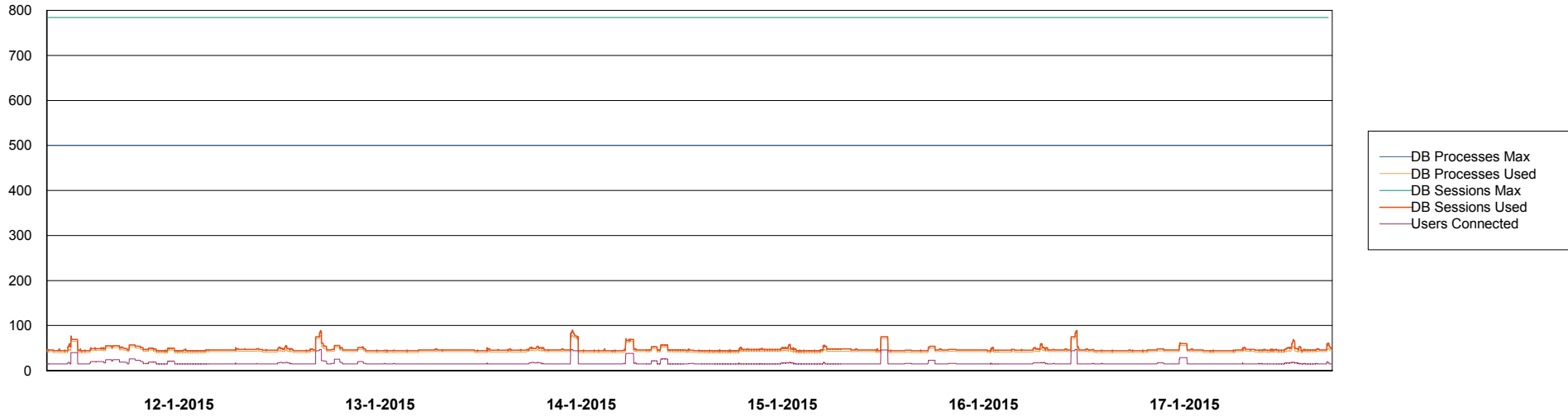
	Total disk space on C (GB)	Free disk space on C (GB)	Total disk space on D (GB)	Free disk space on D (GB)	Total disk space on E (GB)	Free disk space on E (GB)
17-1-2015	279	73	279	51	279	99
16-1-2015	279	78	279	50	279	107
15-1-2015	279	79	279	54	279	127
14-1-2015	279	86	279	55	279	57
13-1-2015	279	89	279	55	279	59
12-1-2015	279	88	279	55	279	39
11-1-2015	279	88	279	55	279	26

Weekly SLA Customer Report

Customer NIX_Production
Database ID 51



=====
DATABASE PERFORMANCE NIXDB_BI
=====



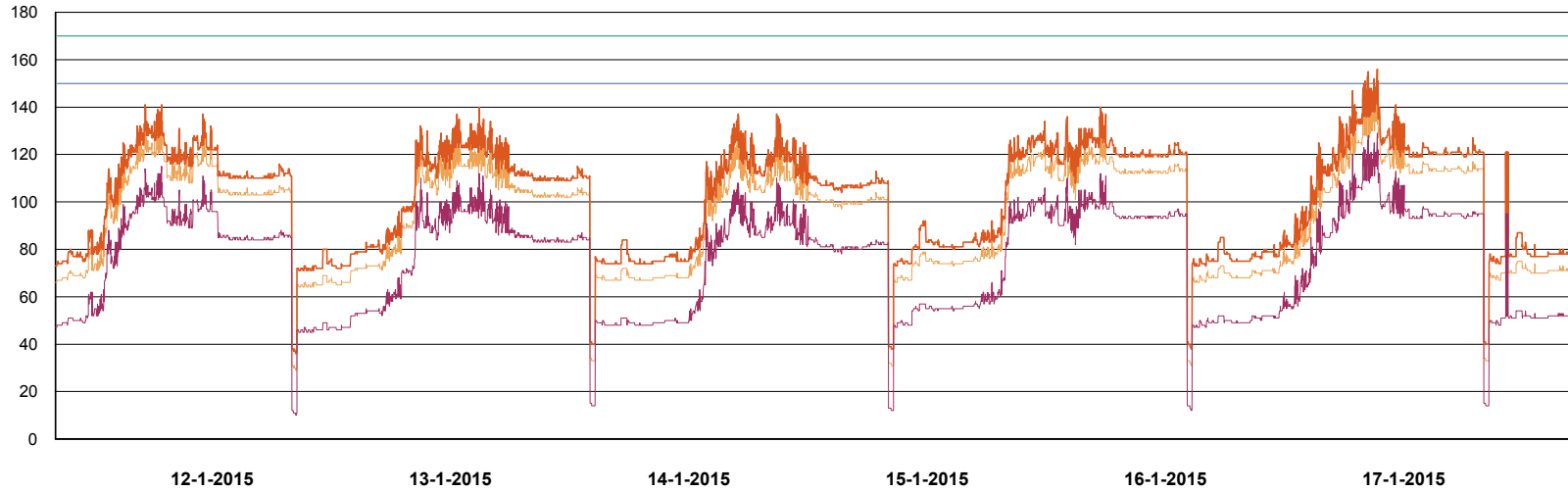
Weekly SLA Customer Report

Customer NIX_Production
Database ID 51

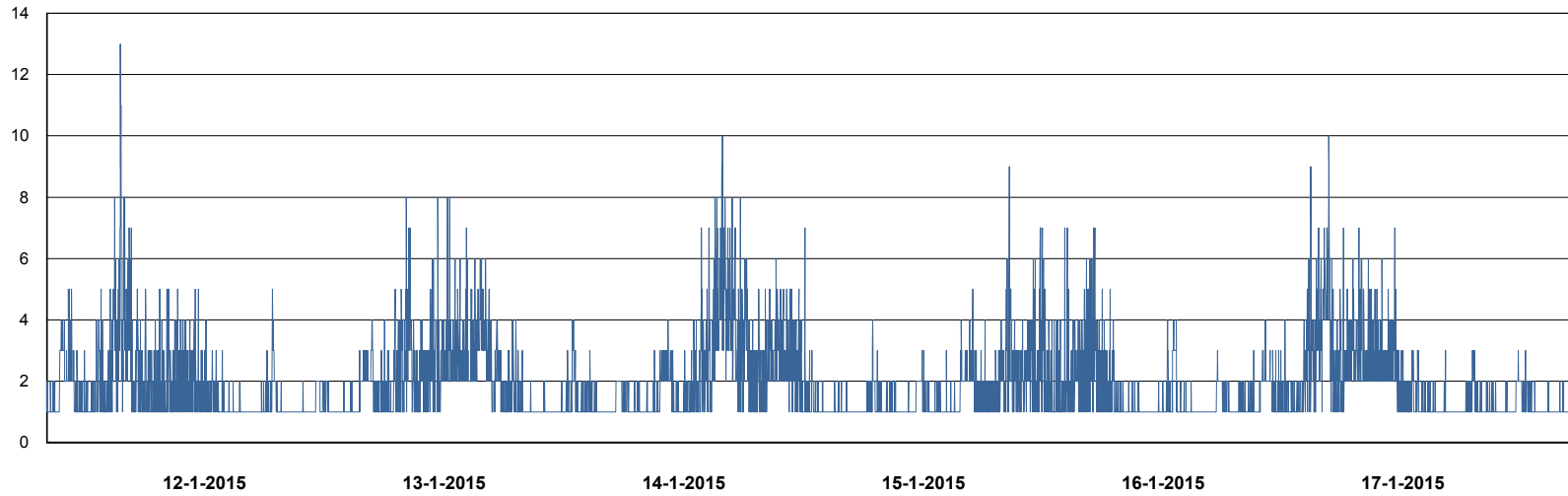


DATABASE PERFORMANCE

NIXDB_Production



- DB Processes Max
- DB Processes Used
- DB Sessions Max
- DB Sessions Used
- Users Connected



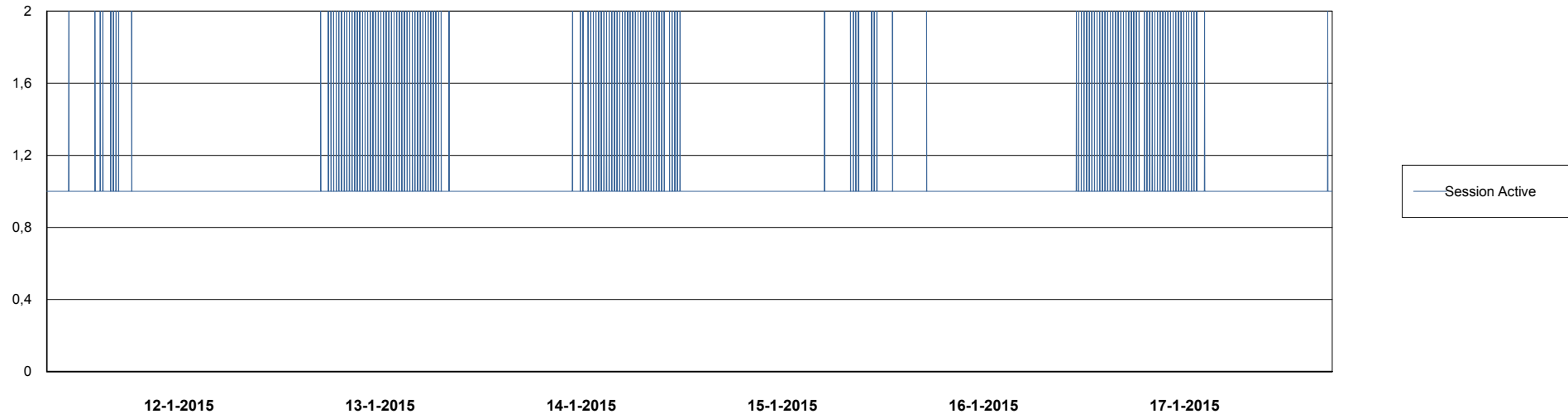
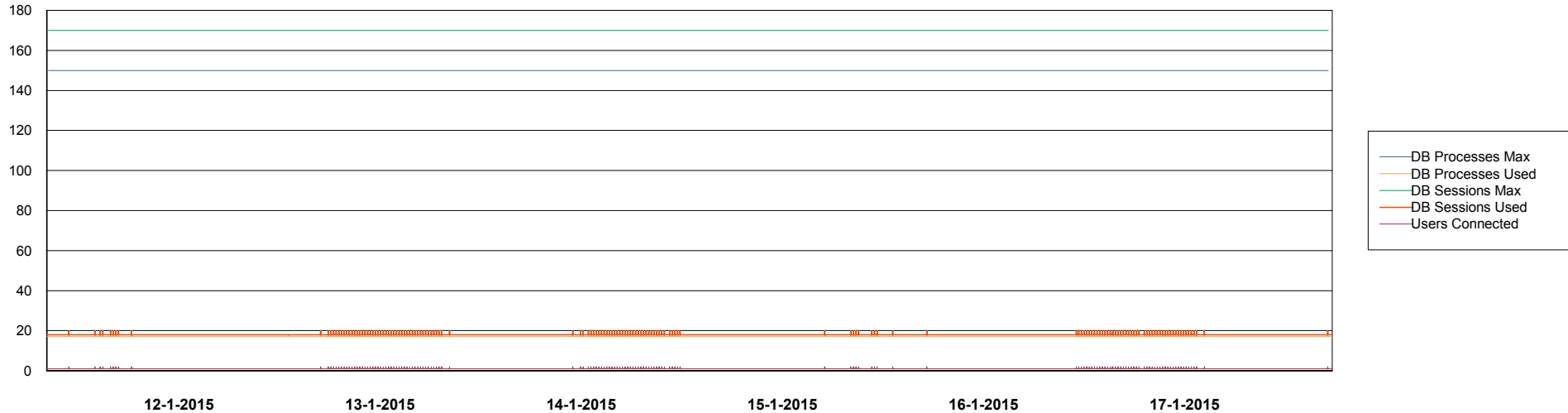
- Session Active

Weekly SLA Customer Report

Customer NIX_Production
Database ID 51



DATABASE PERFORMANCE NIXDB_Standby



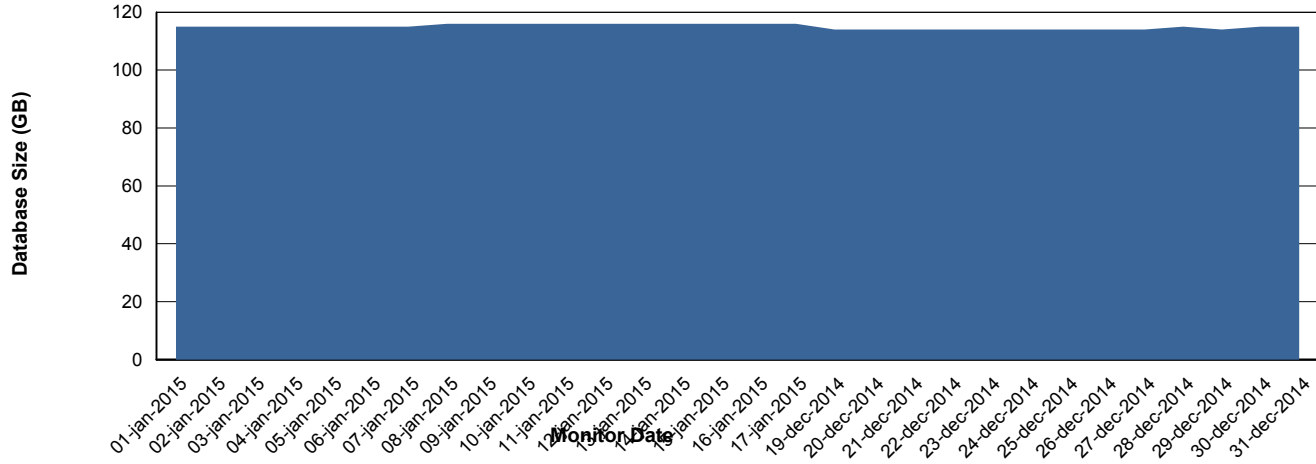
Weekly SLA Customer Report

Customer NIX_Production
Database ID 51



=====
DATABASE SIZE NIXDB_Production
=====
=====
=====
=====

Database growth over last month



Weekly SLA Customer Report

Customer NIX_Production
Database ID 51



=====
DATABASE TABLESPACES NIXDB_BI
=====
TOTAL DATABASE SIZE PER TABLESPACE

Date	Tablespace Name	Filesize (Gb)	Usedsize (Gb)	Percentage free
17-1-2015	ABSDATA	28	19	32
	INDX	44	30	32
16-1-2015	ABSDATA	28	19	32
	INDX	44	30	32
15-1-2015	ABSDATA	28	19	32
	INDX	44	30	32
14-1-2015	ABSDATA	28	19	32
	INDX	44	30	32
13-1-2015	ABSDATA	28	19	32
	INDX	44	30	32
12-1-2015	ABSDATA	28	19	32
	INDX	44	30	32
11-1-2015	ABSDATA	28	19	32
	INDX	44	30	32

Weekly SLA Customer Report

Customer NIX_Production
 Database ID 51



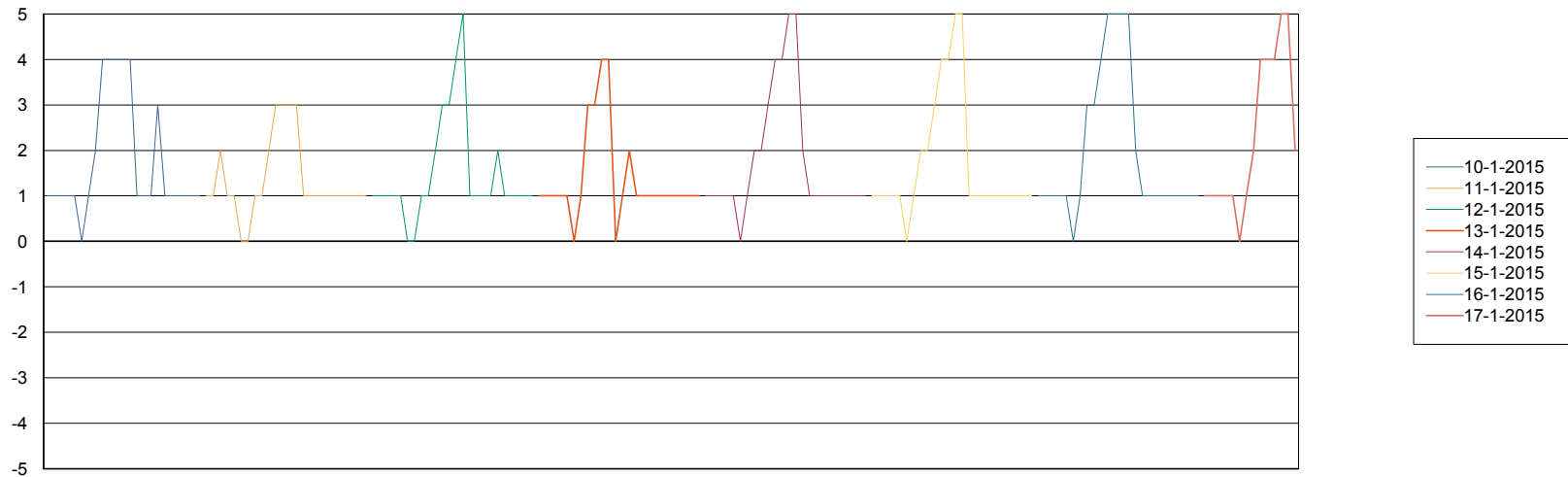
=====
 DATABASE TABLESPACES NIXDB_Production
 =====

TOTAL DATABASE SIZE PER TABLESPACE

Date	Tablespace Name	Filesize (Gb)	Usedsize (Gb)	Percentage free
17-1-2015	ABSDATA	40	30	25
	INDX	109	83	24
16-1-2015	ABSDATA	40	30	25
	INDX	109	83	24
15-1-2015	ABSDATA	40	30	25
	INDX	109	83	24
14-1-2015	ABSDATA	40	30	25
	INDX	109	83	24
13-1-2015	ABSDATA	40	30	25
	INDX	109	83	24
12-1-2015	ABSDATA	40	30	25
	INDX	109	83	24
11-1-2015	ABSDATA	40	30	25
	INDX	109	83	24

=====
 STANDBY DATABASE HEALTH NIX_Production
 =====

Recovery lag for last 7 days



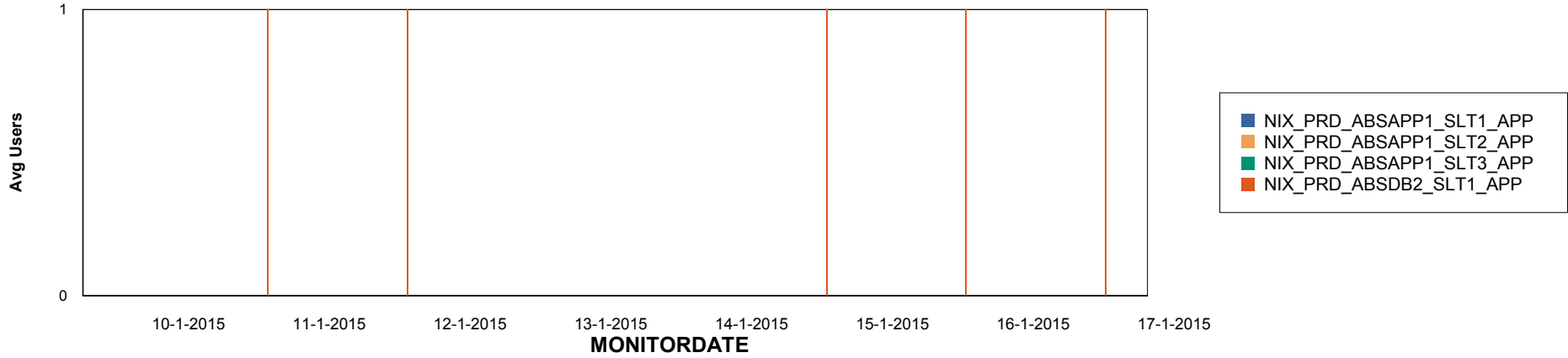
Weekly SLA Customer Report

Customer NIX_Production
Database ID 51

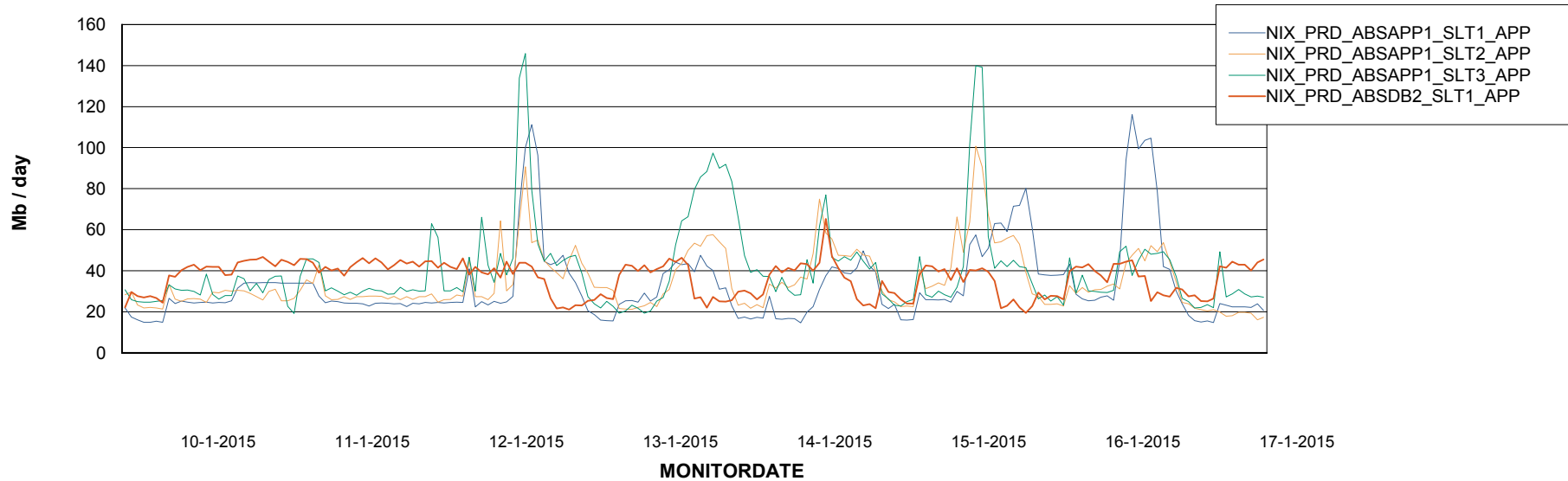


ABSolute Application Server Services

Disaster per ABS Server



Avg memory used per ABS Server Service



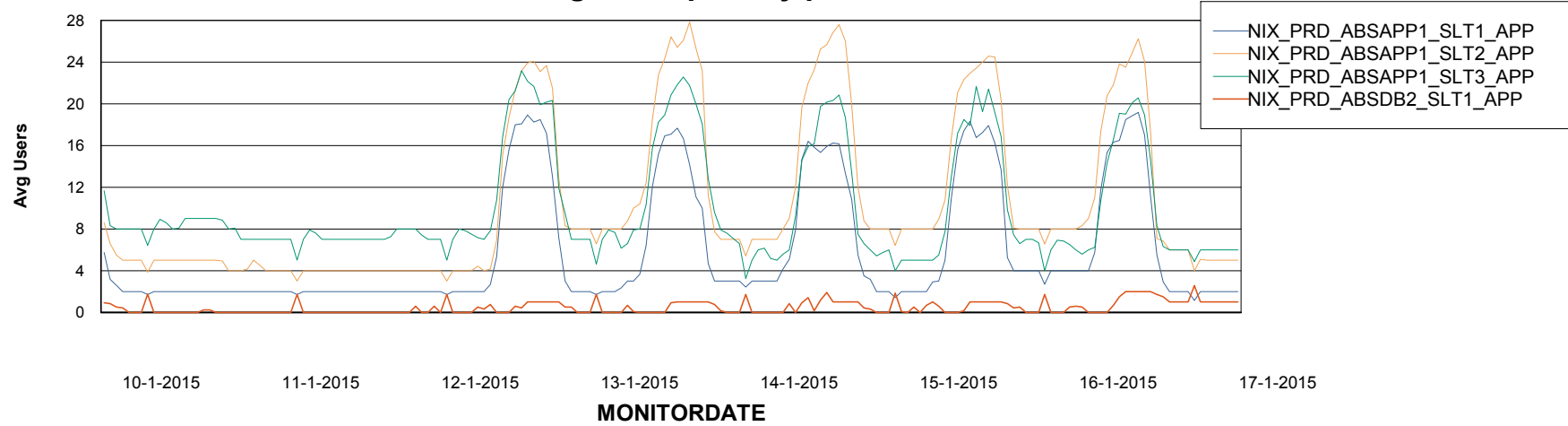
Weekly SLA Customer Report

Customer NIX_Production
Database ID 51



=====
ABSolute Application Server Services
=====

Avg users per day per ABS server



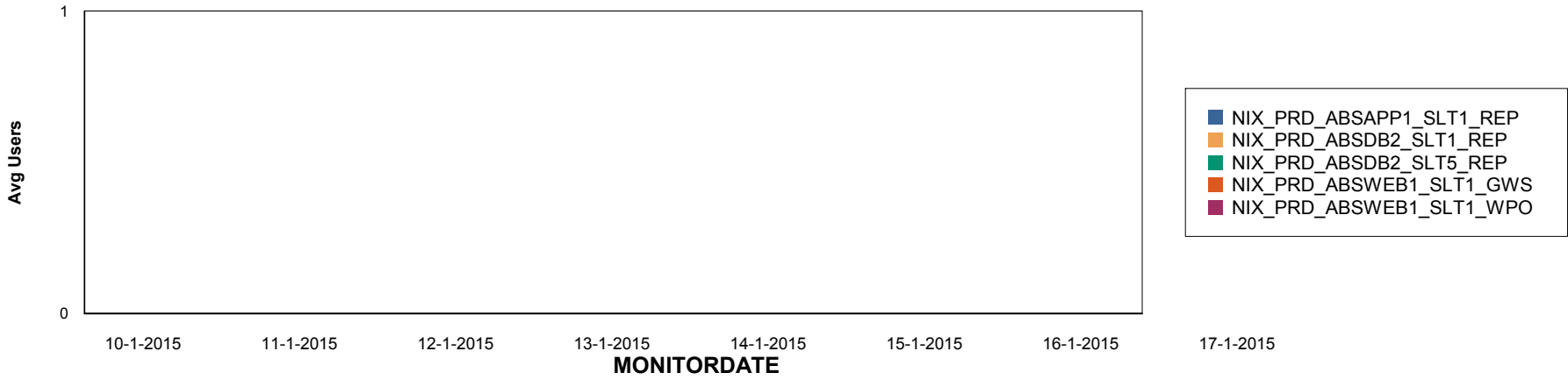
Weekly SLA Customer Report

Customer NIX_Production
Database ID 51

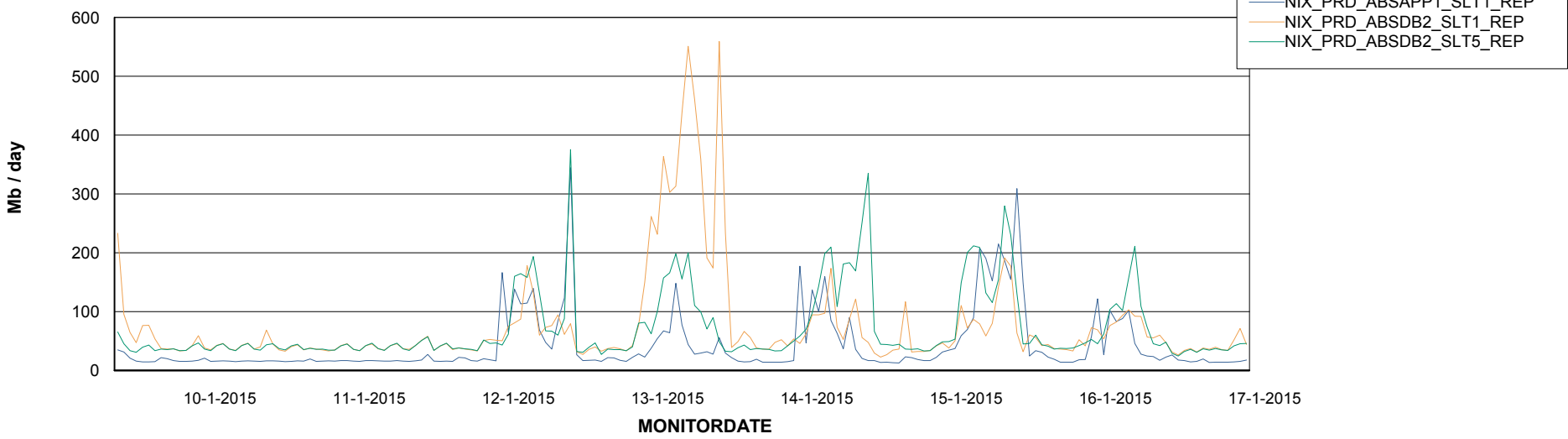


=====
ABSolute Application ReportServer Services
=====

Disaster per ReportServer



Avg memory used per ReportServer Service



Weekly SLA Customer Report

Customer NIX_Production
Database ID 51



Disaster per ABS component

