

Weekly SLA Customer Report

Customer JWR Production
Database ID 43



=====
HARDDISK USAGE JWR_PRD_JWR-ABS-01
=====

	Used disk space on / (GB)	Total disk space on / (GB)	Free disk space on / (GB)
17-1-2015	27	49	20
16-1-2015	27	49	20
15-1-2015	27	49	20
14-1-2015	27	49	20
13-1-2015	27	49	20
12-1-2015	27	49	20
11-1-2015	27	49	20

=====
HARDDISK USAGE JWR_PRD_JWR-ABS-02
=====

	Used disk space on / (GB)	Total disk space on / (GB)	Free disk space on / (GB)
17-1-2015	27	49	20
16-1-2015	27	49	20
15-1-2015	27	49	20
14-1-2015	27	49	20
13-1-2015	27	49	20
12-1-2015	27	49	20
11-1-2015	27	49	20

Weekly SLA Customer Report

Customer JWR Production
 Database ID 43



=====

HARDDISK USAGE JWR_PRD_JWR-ODB-01

=====

	Used disk space on / (GB)	Total disk space on / (GB)	Free disk space on / (GB)
17-1-2015	75	90	11
16-1-2015	75	90	11
15-1-2015	75	90	11
14-1-2015	75	90	11
13-1-2015	75	90	11
12-1-2015	76	90	9
11-1-2015	76	90	10

=====

HARDDISK USAGE JWR_PRD_JWR-ODB-02

=====

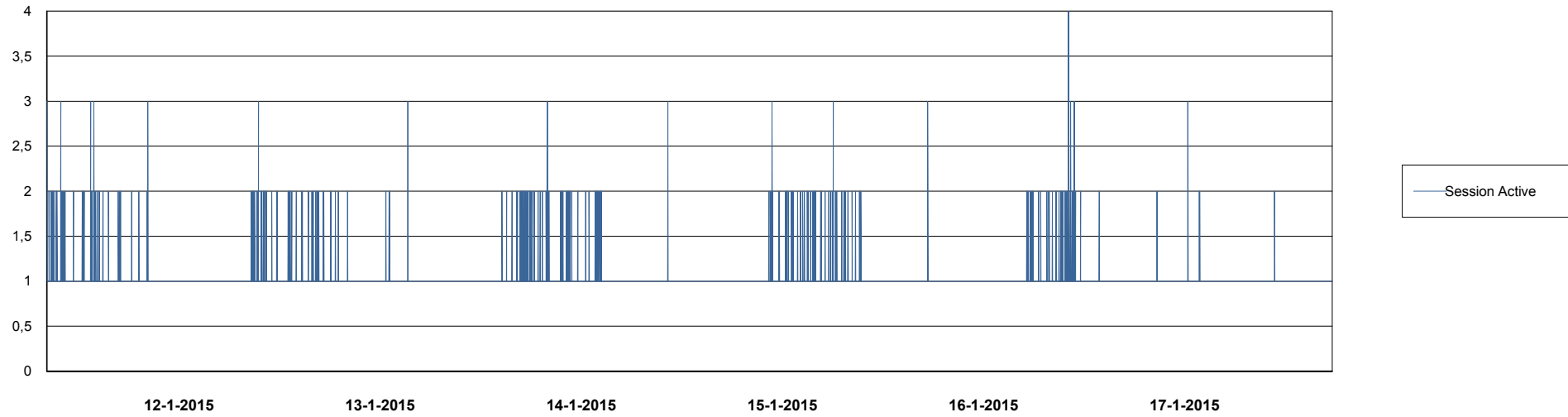
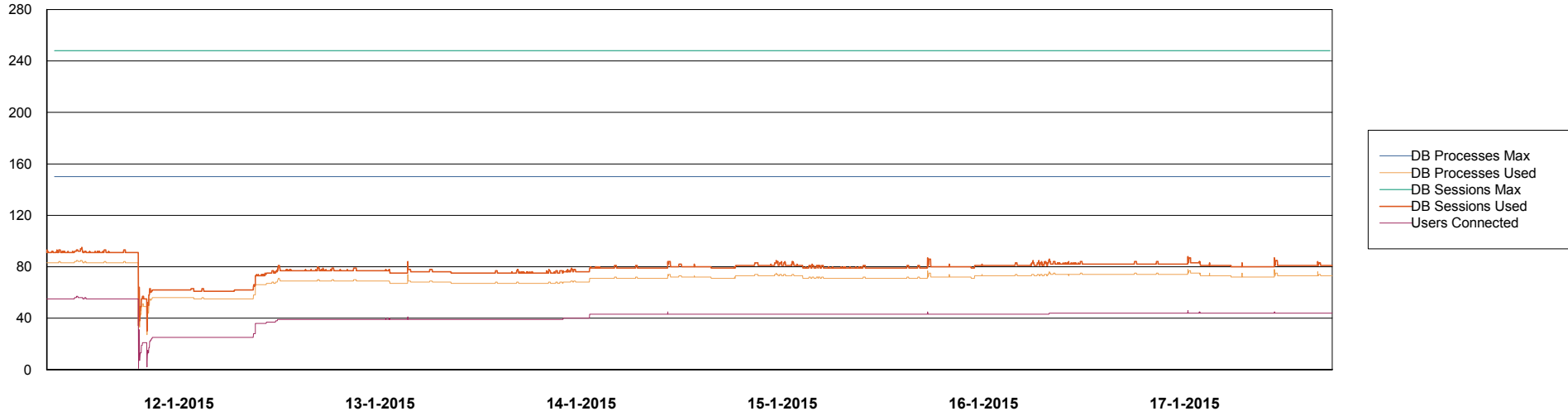
	Used disk space on / (GB)	Total disk space on / (GB)	Free disk space on / (GB)
17-1-2015	93	138	38
16-1-2015	93	138	38
15-1-2015	93	138	38
14-1-2015	93	138	38
13-1-2015	93	138	38
12-1-2015	93	138	37
11-1-2015	93	138	38

Weekly SLA Customer Report

Customer JWR Production
Database ID 43



DATABASE PERFORMANCE JWRDB_Production



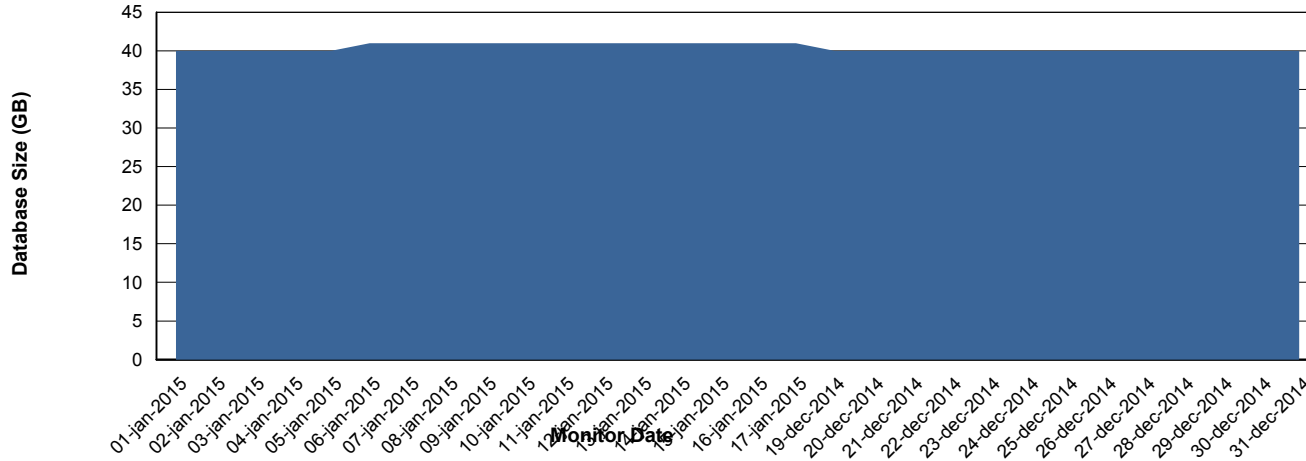
Weekly SLA Customer Report

Customer JWR Production
 Database ID 43



=====
 DATABASE SIZE JWRDB_Production
 =====

Database growth over last month



=====
 DATABASE TABLESPACES JWRDB_Production
 =====

TOTAL DATABASE SIZE PER TABLESPACE

Date	Tablespace Name	Filesize (Gb)	Usedsize (Gb)	Percentage free
17-1-2015	ABSDATA	15	12	20
	INDX	32	28	13
16-1-2015	ABSDATA	15	12	20
	INDX	32	28	13
15-1-2015	ABSDATA	15	12	20
	INDX	32	28	13
14-1-2015	ABSDATA	15	12	20
	INDX	32	28	13
13-1-2015	ABSDATA	15	12	20
	INDX	32	28	13
12-1-2015	ABSDATA	15	12	20
	INDX	32	28	13
11-1-2015	ABSDATA	15	12	20
	INDX	32	28	13

Weekly SLA Customer Report

Customer JWR Production
Database ID 43



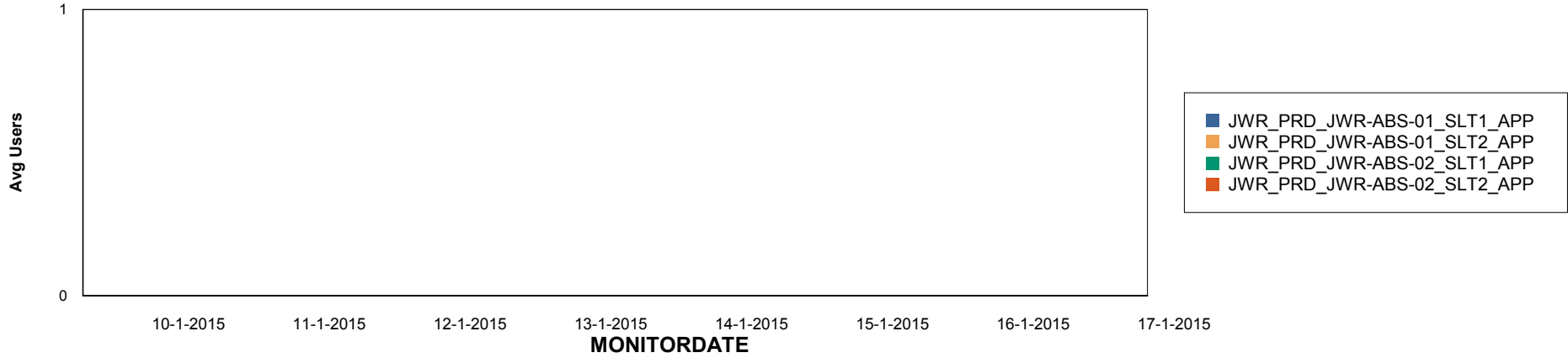
Weekly SLA Customer Report

Customer JWR Production
Database ID 43

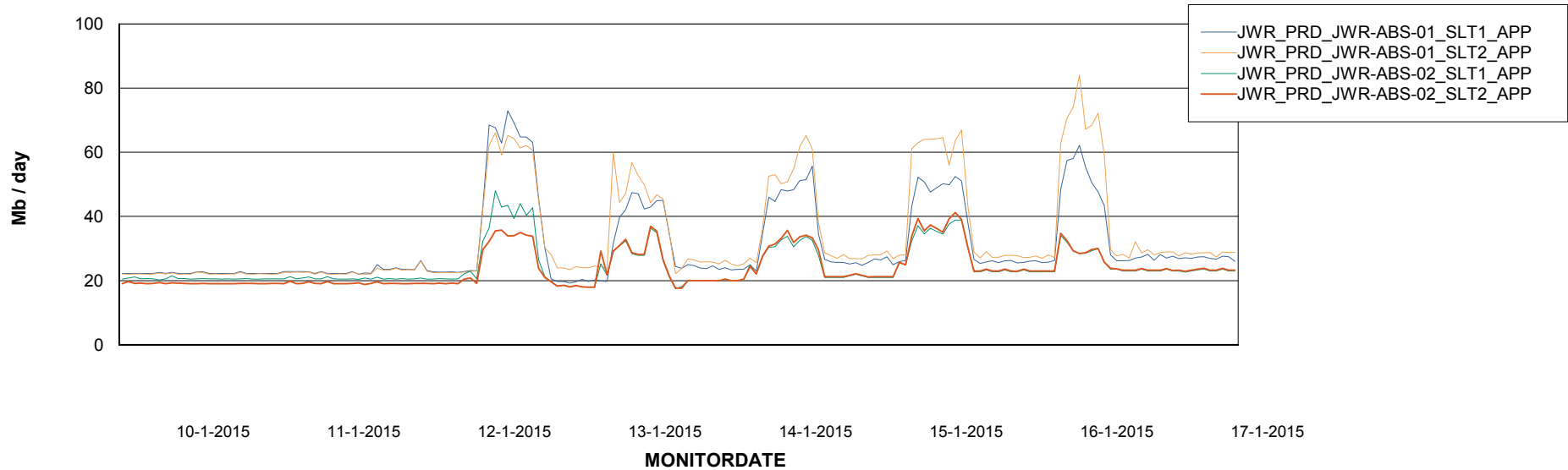


=====
ABSolute Application Server Services
=====

Disaster per ABS Server



Avg memory used per ABS Server Service



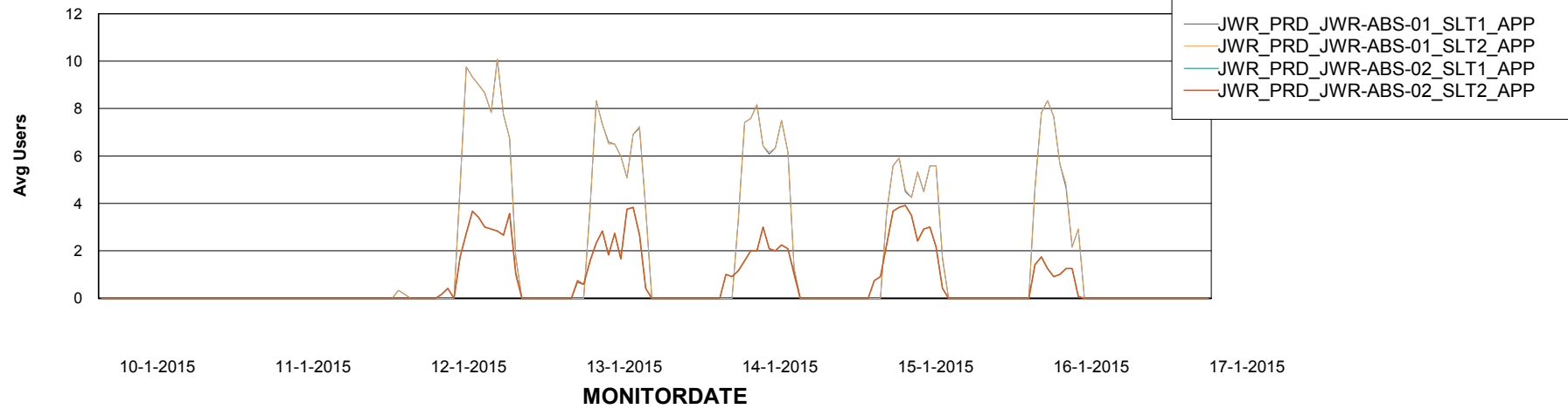
Weekly SLA Customer Report

Customer JWR Production
Database ID 43



=====
ABSolute Application Server Services
=====

Avg users per day per ABS server



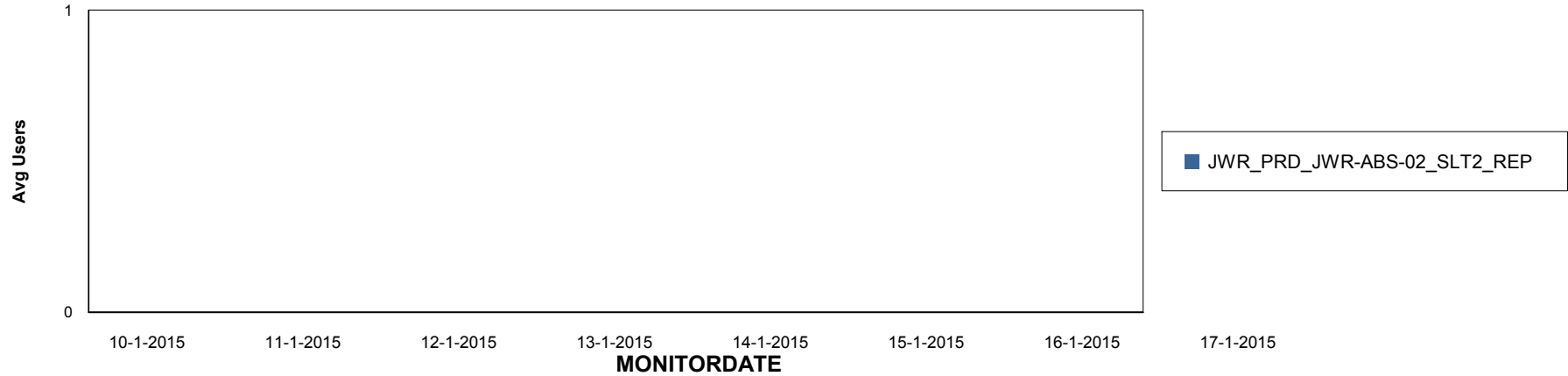
Weekly SLA Customer Report

Customer JWR Production
Database ID 43

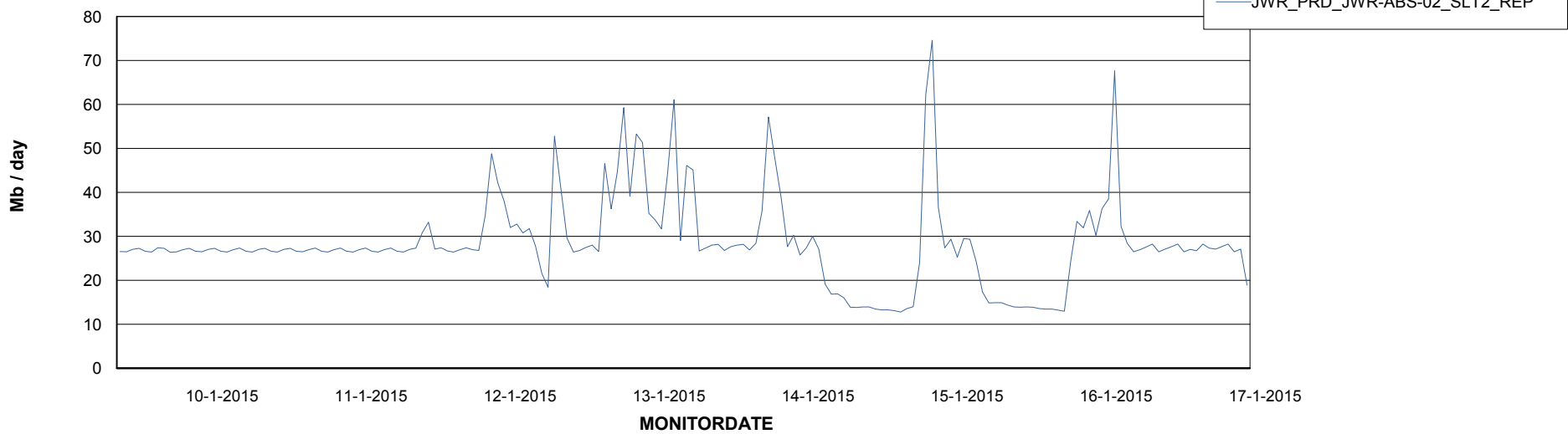


=====
ABSolute Application ReportServer Services
=====

Disaster per ReportServer



Avg memory used per ReportServer Service



Weekly SLA Customer Report

Customer JWR Production
Database ID 43



Disaster per ABS component

