

# Weekly SLA Customer Report

Customer VEN\_Production  
Database ID 35



=====  
HARDDISK USAGE VEN\_PRD\_ORACLE1  
=====

	Free disk space on C (GB)	Free disk space on D (GB)	Free disk space on E (GB)
10-1-2015	155	89	145
9-1-2015	155	89	147
8-1-2015	155	89	148
7-1-2015	155	89	149
6-1-2015	155	89	142
5-1-2015	155	89	134
4-1-2015	155	89	133

=====  
HARDDISK USAGE VEN\_PRD\_ORACLE2  
=====

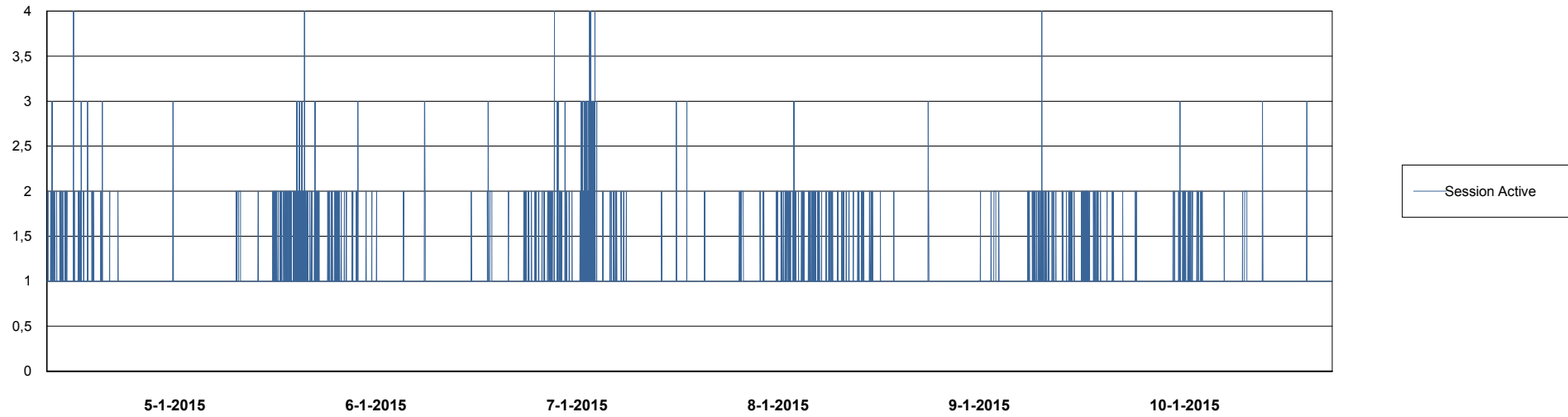
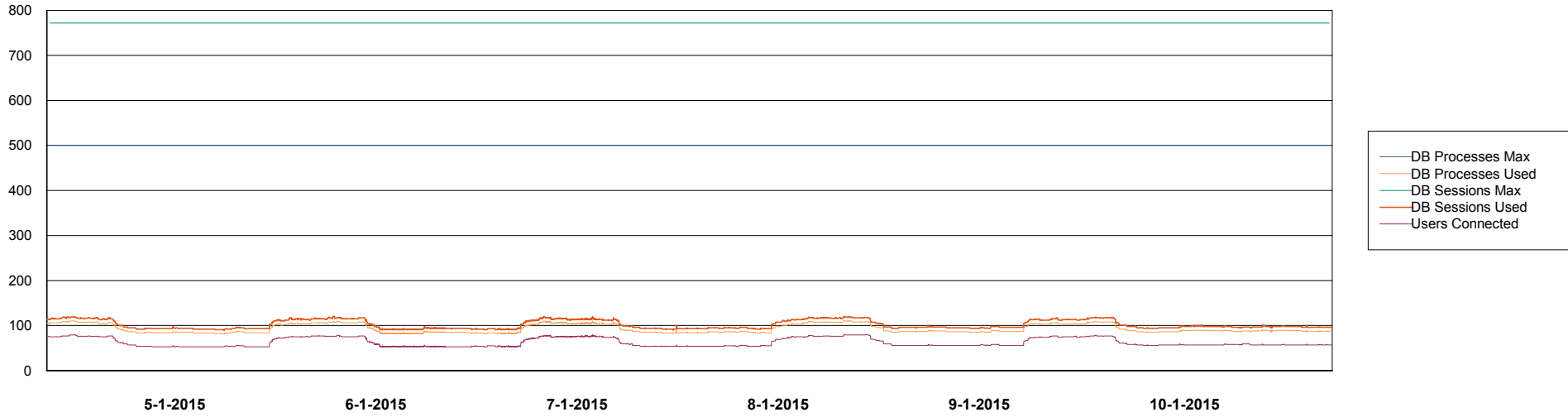
	Free disk space on C (GB)	Free disk space on D (GB)	Free disk space on E (GB)
10-1-2015	335	306	136
9-1-2015	336	306	139
8-1-2015	336	306	140
7-1-2015	336	306	141
6-1-2015	335	306	134
5-1-2015	313	306	126
4-1-2015	304	306	126

# Weekly SLA Customer Report

Customer VEN\_Production  
Database ID 35



DATABASE PERFORMANCE      VENDB\_Production



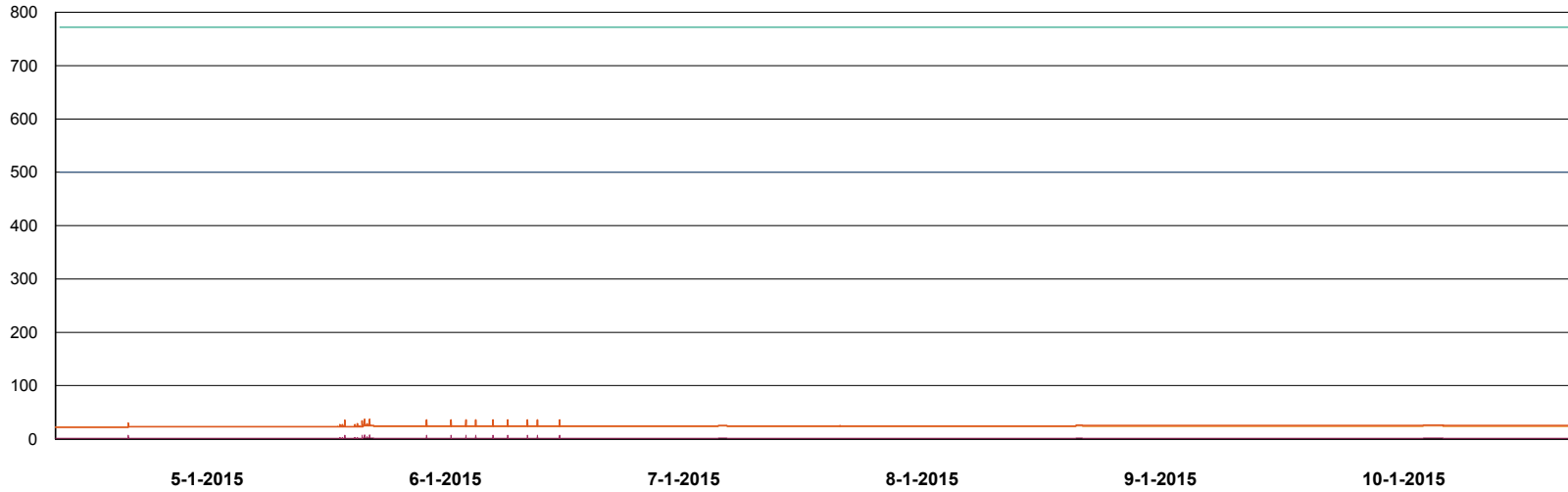
# Weekly SLA Customer Report

Customer VEN\_Production  
Database ID 35

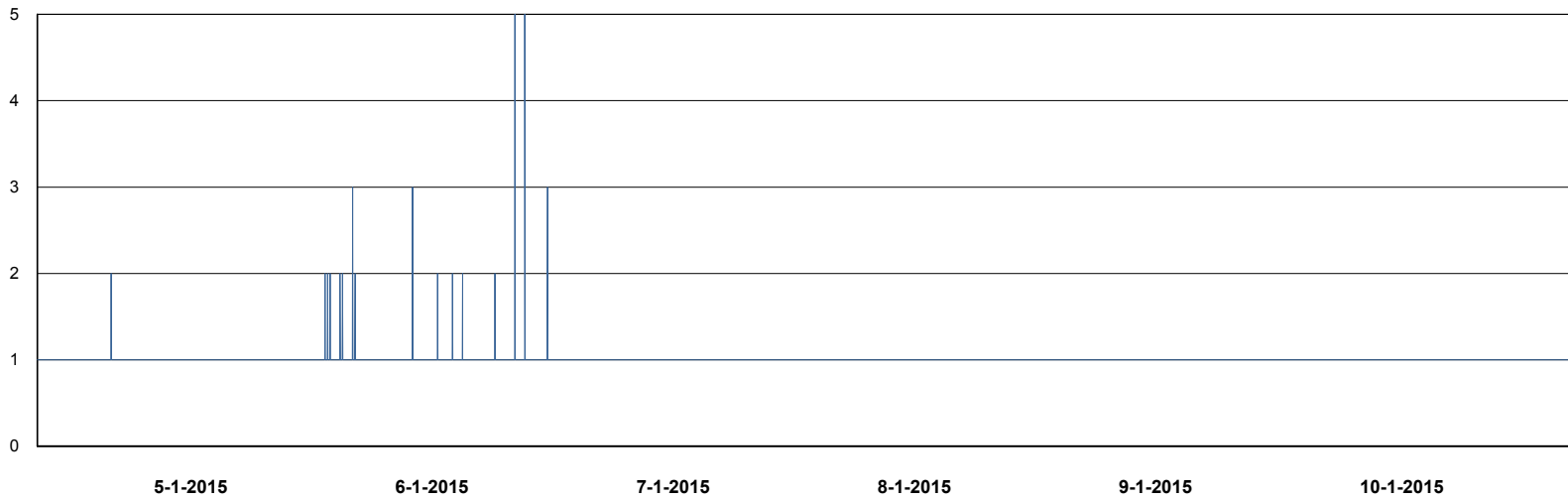


## DATABASE PERFORMANCE

VENDB\_Standby



- DB Processes Max
- DB Processes Used
- DB Sessions Max
- DB Sessions Used
- Users Connected



- Session Active

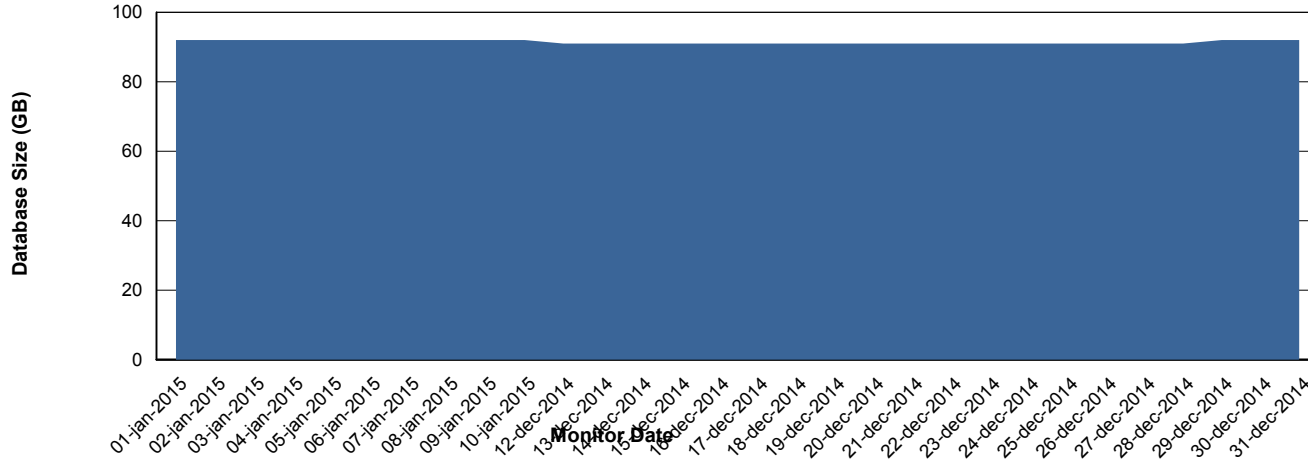
# Weekly SLA Customer Report

Customer VEN\_Production  
 Database ID 35



=====  
 DATABASE SIZE VENDB\_Production  
 =====

## Database growth over last month



=====  
 DATABASE TABLESPACES VENDB\_Production  
 =====

### TOTAL DATABASE SIZE PER TABLESPACE

Date	Tablespace Name	Filesize (Gb)	Usedsize (Gb)	Percentage free
10-1-2015	ABSDATA	34	27	21
	INDX	88	64	27
9-1-2015	ABSDATA	34	27	21
	INDX	88	64	27
8-1-2015	ABSDATA	34	27	21
	INDX	88	64	27
7-1-2015	ABSDATA	34	27	21
	INDX	88	64	27
6-1-2015	ABSDATA	34	27	21
	INDX	88	64	27
5-1-2015	ABSDATA	34	27	21
	INDX	88	64	27
4-1-2015	ABSDATA	34	27	21
	INDX	88	64	27

# Weekly SLA Customer Report

Customer VEN\_Production  
Database ID 35



=====  
STANDBY DATABASE HEALTH    VEN\_Production  
=====

### Recovery lag for last 7 days

