

Weekly SLA Customer Report

Customer RSS Production
 Database ID 52



=====
 HARDDISK USAGE RSS_PRD_SVRDC020v015
 =====

	Total disk space on C (GB)	Free disk space on C (GB)	Total disk space on D (GB)	Free disk space on D (GB)	Total disk space on E (GB)	Free disk space on E (GB)
10-1-2015	50	13	300	246	300	51
9-1-2015	50	13	300	246	300	52
8-1-2015	50	13	300	246	300	52
7-1-2015	50	13	300	246	300	53
6-1-2015	50	13	300	247	300	53
5-1-2015	50	13	300	247	300	54
4-1-2015	50	13	300	247	300	55

=====
 HARDDISK USAGE RSS_PRD_SVRDC021v015
 =====

	Total disk space on C (GB)	Free disk space on C (GB)	Total disk space on D (GB)	Free disk space on D (GB)	Total disk space on E (GB)	Free disk space on E (GB)
10-1-2015	60	25	300	266	300	45
9-1-2015	60	25	300	266	300	46
8-1-2015	60	25	300	266	300	46
7-1-2015	60	25	300	266	300	47
6-1-2015	60	25	300	266	300	47
5-1-2015	60	25	300	266	300	48
4-1-2015	60	25	300	266	300	49

Weekly SLA Customer Report

Customer RSS Production
 Database ID 52



=====
 HARDDISK USAGE RSS_PRD_SVRDC022v015
 =====

	Total disk space on C (GB)	Free disk space on C (GB)	Total disk space on D (GB)	Free disk space on D (GB)
10-1-2015	40	15	5	1
9-1-2015	40	15	5	1
8-1-2015	40	15	5	1
7-1-2015	40	15	5	1
6-1-2015	40	15	5	1
5-1-2015	40	15	5	1
4-1-2015	40	15	5	1

=====
 HARDDISK USAGE RSS_PRD_SVRDC190v016
 =====

	Total disk space on C (GB)	Free disk space on C (GB)	Total disk space on D (GB)	Free disk space on D (GB)
10-1-2015	40	19	200	193
9-1-2015	40	19	200	193
8-1-2015	40	19	200	193
7-1-2015	40	19	200	193
6-1-2015	40	19	200	193
5-1-2015	40	19	200	193
4-1-2015	40	19	200	194

Weekly SLA Customer Report

Customer RSS Production
Database ID 52



HARDDISK USAGE RSS_PRD_SVRDC191v016

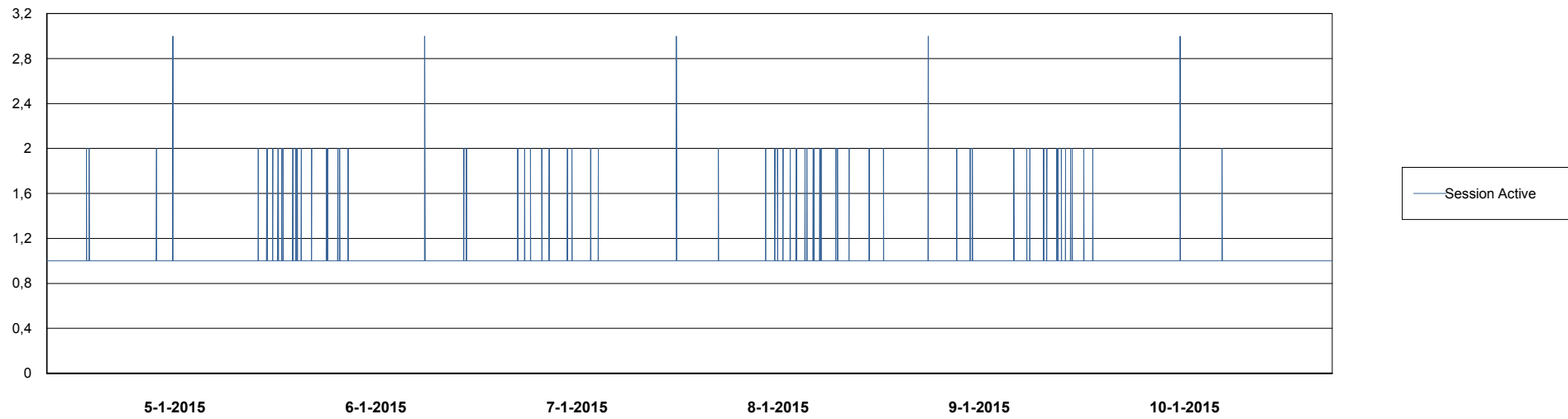
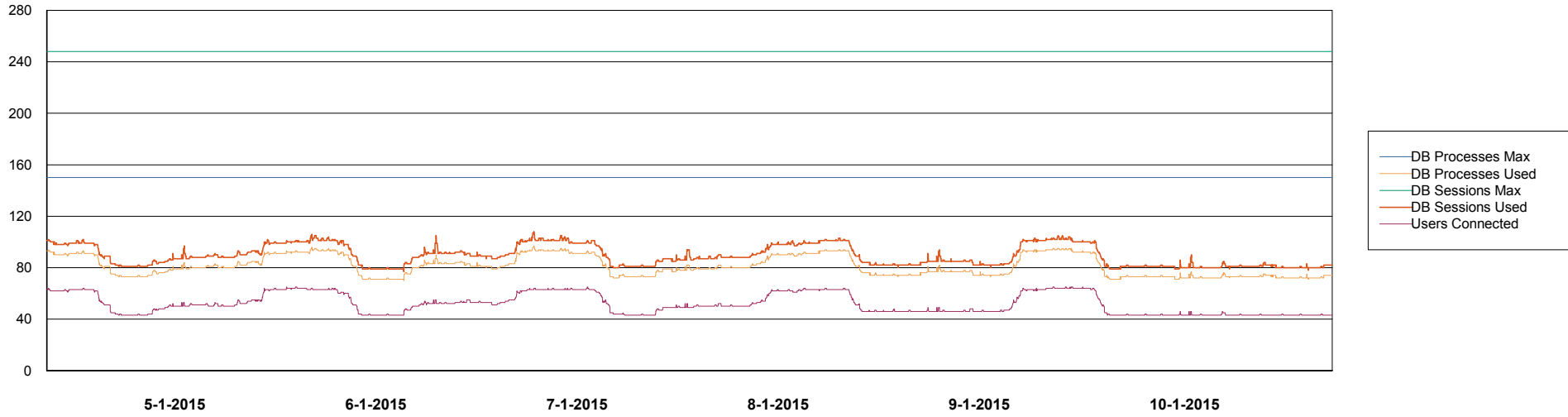
	Total disk space on C (GB)	Free disk space on C (GB)	Total disk space on D (GB)	Free disk space on D (GB)
10-1-2015	40	11	200	137
9-1-2015	40	11	200	137
8-1-2015	40	11	200	137
7-1-2015	40	11	200	137
6-1-2015	40	11	200	137
5-1-2015	40	11	200	137
4-1-2015	40	11	200	137

Weekly SLA Customer Report

Customer RSS Production
Database ID 52



DATABASE PERFORMANCE RSSDB_Production

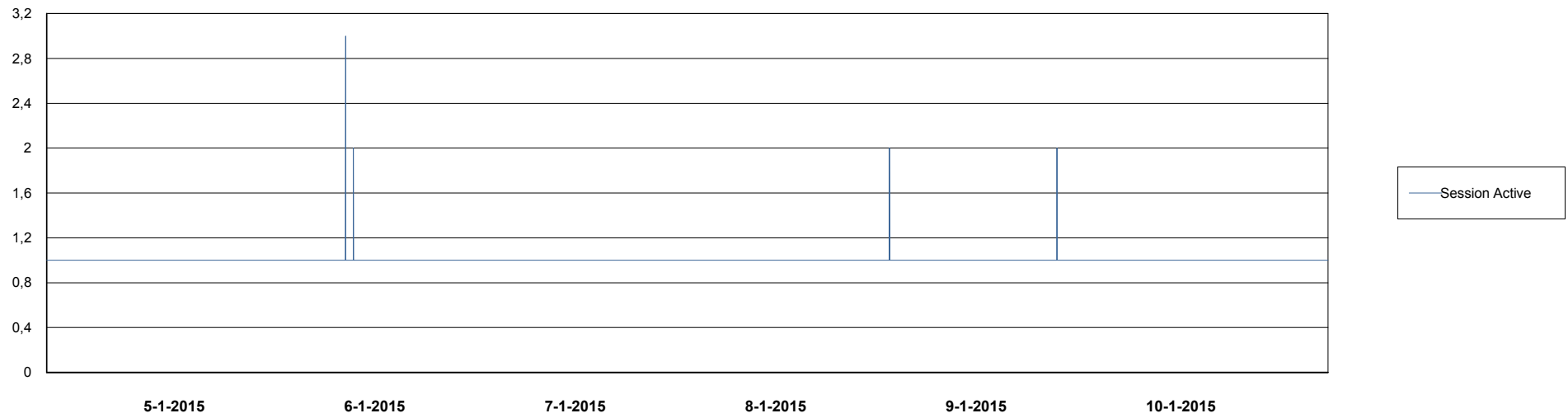
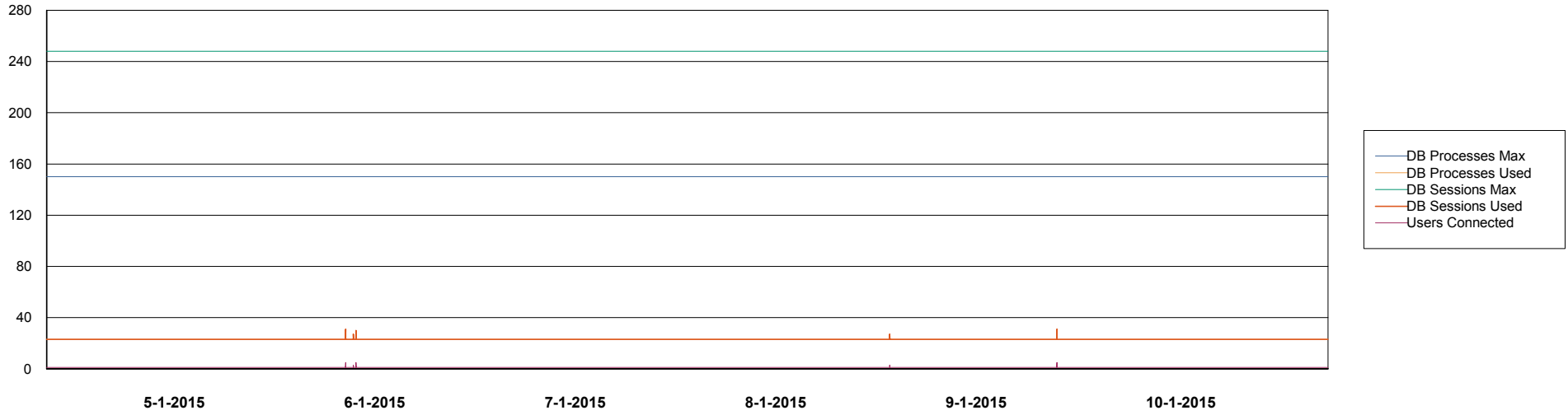


Weekly SLA Customer Report

Customer RSS Production
Database ID 52



DATABASE PERFORMANCE RSSDB_Standby



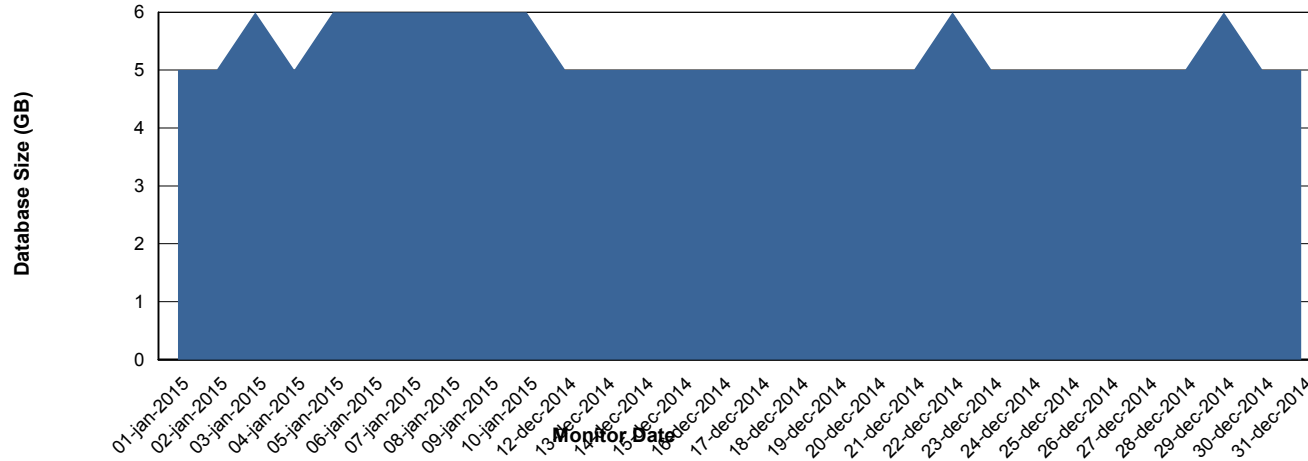
Weekly SLA Customer Report

Customer RSS Production
 Database ID 52



=====
 DATABASE SIZE RSSDB_Production
 =====

Database growth over last month



=====
 DATABASE TABLESPACES RSSDB_Production
 =====

TOTAL DATABASE SIZE PER TABLESPACE

Date	Tablespace Name	Filesize (Gb)	Usedsize (Gb)	Percentage free
10-1-2015	ABSDATA	2	1	50
	INDX	3	1	67
9-1-2015	ABSDATA	2	1	50
	INDX	3	1	67
8-1-2015	ABSDATA	2	1	50
	INDX	3	1	67
7-1-2015	ABSDATA	2	1	50
	INDX	3	1	67
6-1-2015	ABSDATA	2	1	50
	INDX	3	1	67
5-1-2015	ABSDATA	2	1	50
	INDX	3	1	67
4-1-2015	ABSDATA	2	1	50
	INDX	3	1	67

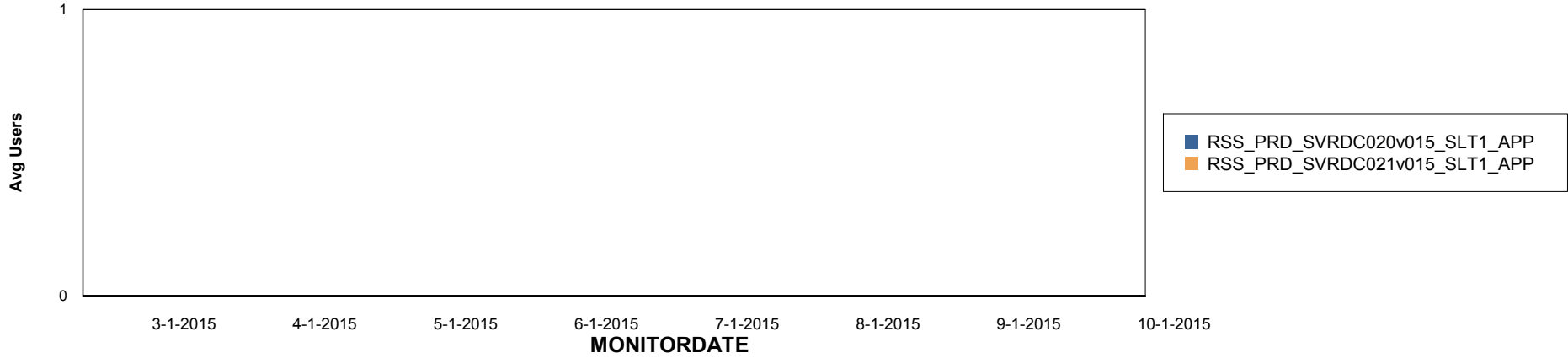
Weekly SLA Customer Report

Customer RSS Production
Database ID 52

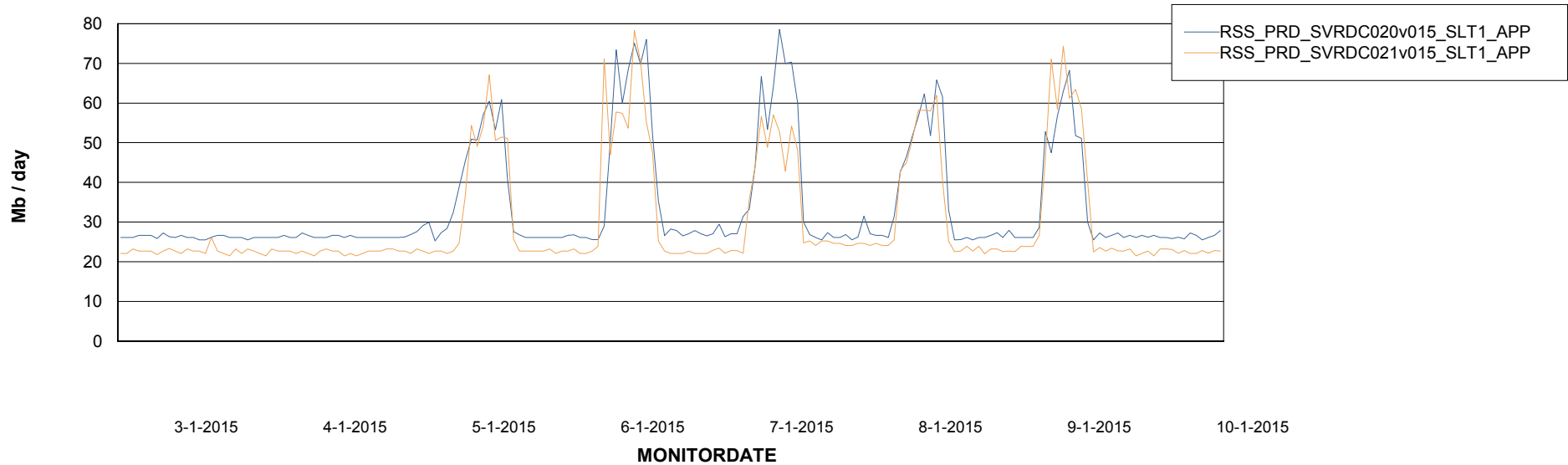


=====
ABSolute Application Server Services
=====

Disaster per ABS Server



Avg memory used per ABS Server Service



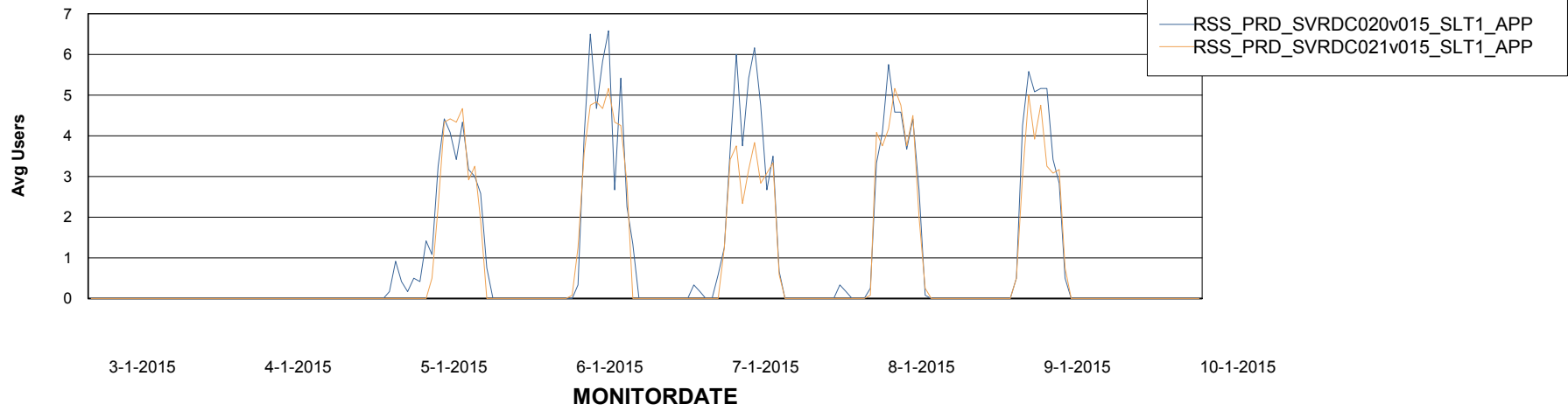
Weekly SLA Customer Report

Customer RSS Production
Database ID 52



=====
ABSolute Application Server Services
=====

Avg users per day per ABS server



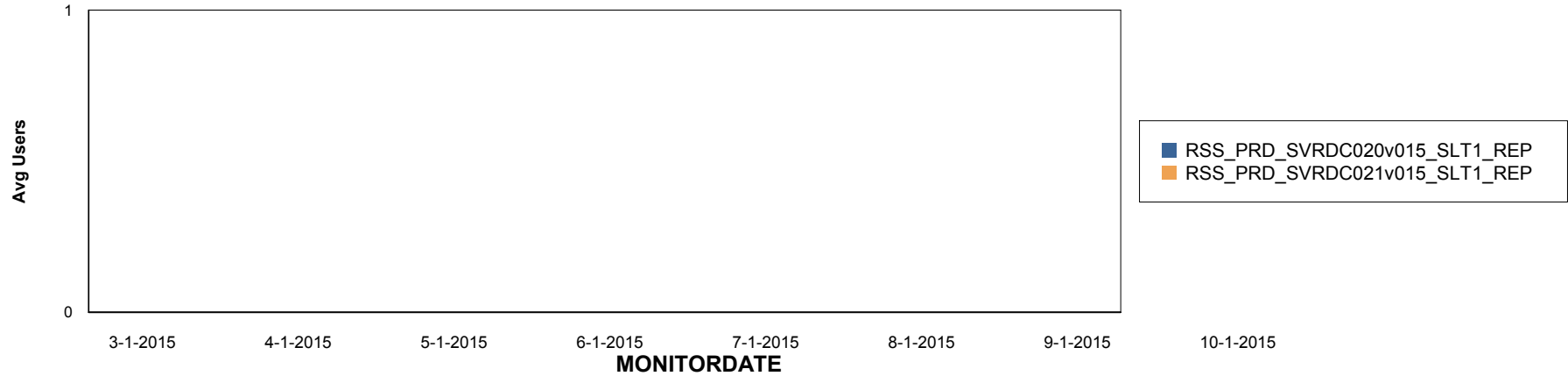
Weekly SLA Customer Report

Customer RSS Production
Database ID 52

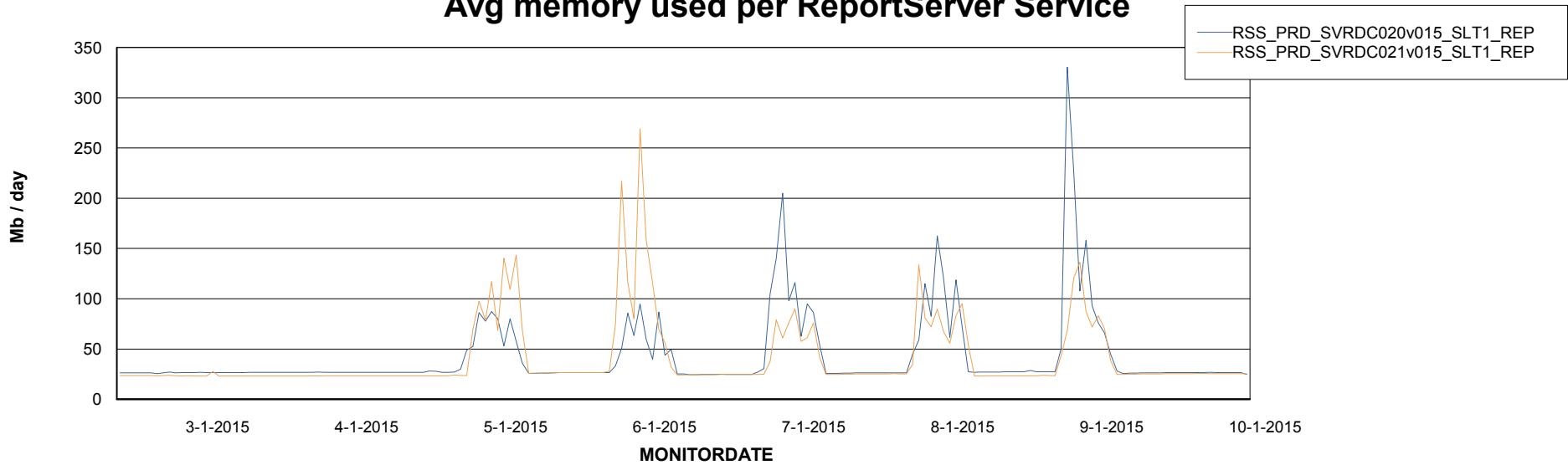


=====
ABSolute Application ReportServer Services
=====

Disaster per ReportServer



Avg memory used per ReportServer Service



Weekly SLA Customer Report

Customer RSS Production
Database ID 52



Disaster per ABS component

