

## Weekly SLA Customer Report

Customer RFL\_Production  
 Database ID 36



=====  
 HARDDISK USAGE RFL\_PRD\_ORACLE1  
 =====

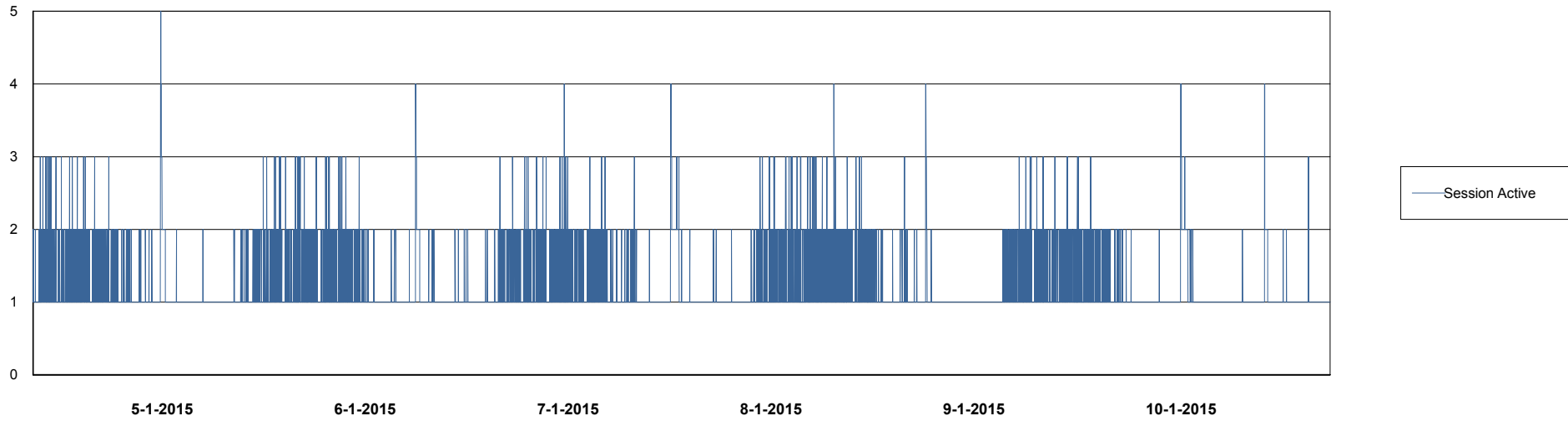
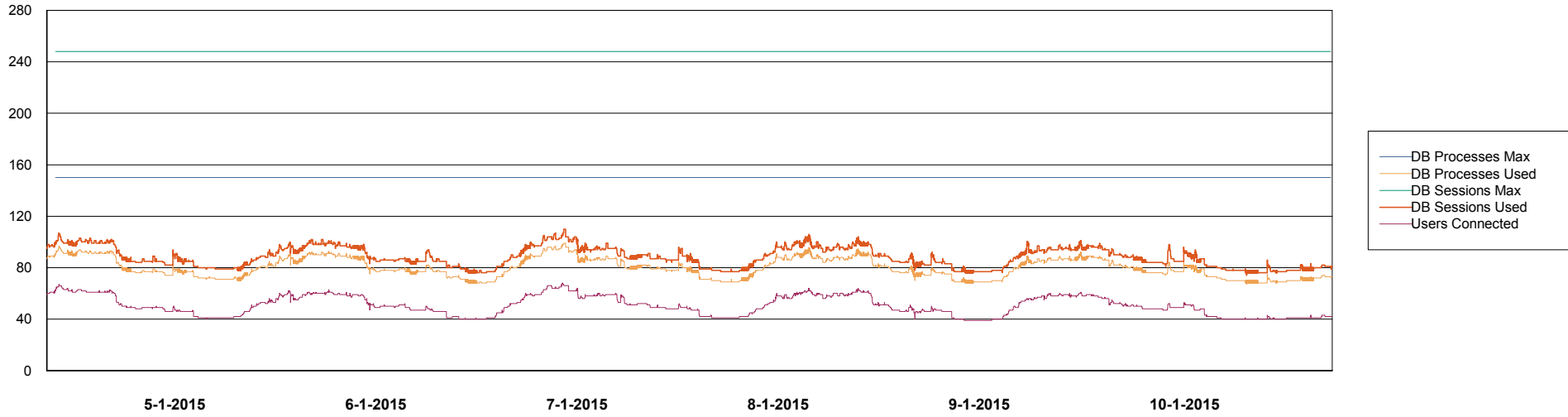
	Total disk space on C (GB)	Free disk space on C (GB)	Total disk space on D (GB)	Free disk space on D (GB)	Total disk space on E (GB)	Free disk space on E (GB)
10-1-2015	279	113	137	93	137	95
9-1-2015	279	109	137	93	137	100
8-1-2015	279	109	137	93	137	101
7-1-2015	279	109	137	93	137	102
6-1-2015	279	109	137	93	137	103
5-1-2015	279	108	137	93	137	104
4-1-2015	279	109	137	93	137	104

# Weekly SLA Customer Report

Customer RFL\_Production  
Database ID 36



## DATABASE PERFORMANCE RFLDB\_Production

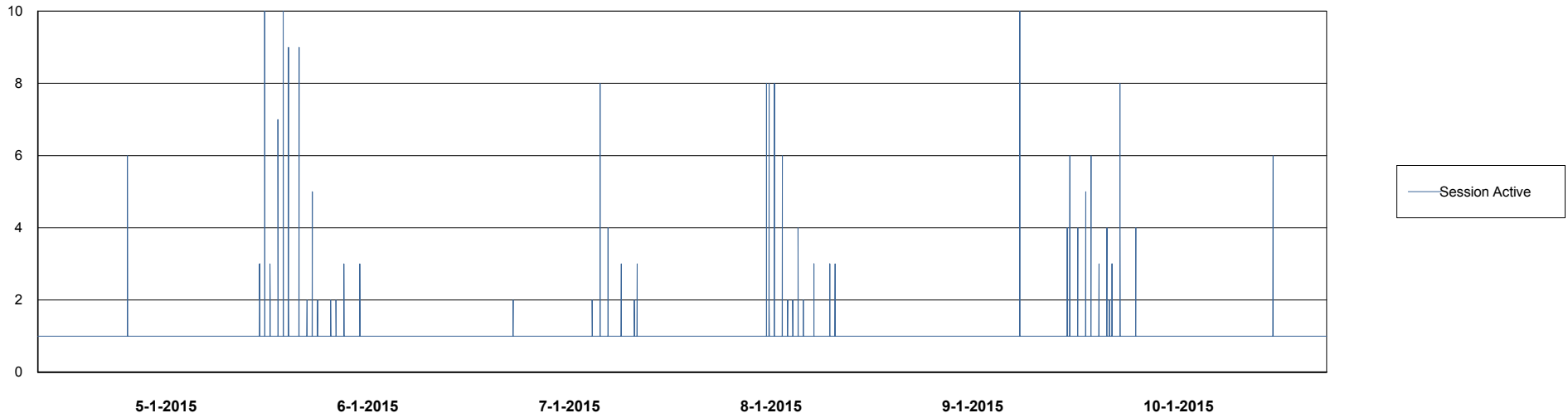
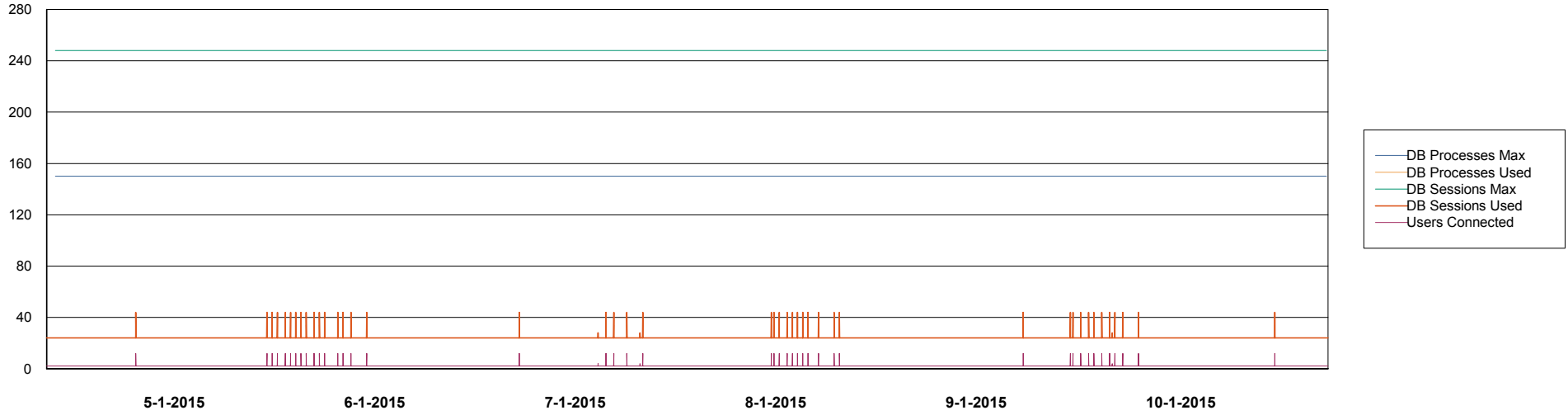


# Weekly SLA Customer Report

Customer RFL\_Production  
Database ID 36



DATABASE PERFORMANCE RFLDB\_Standby



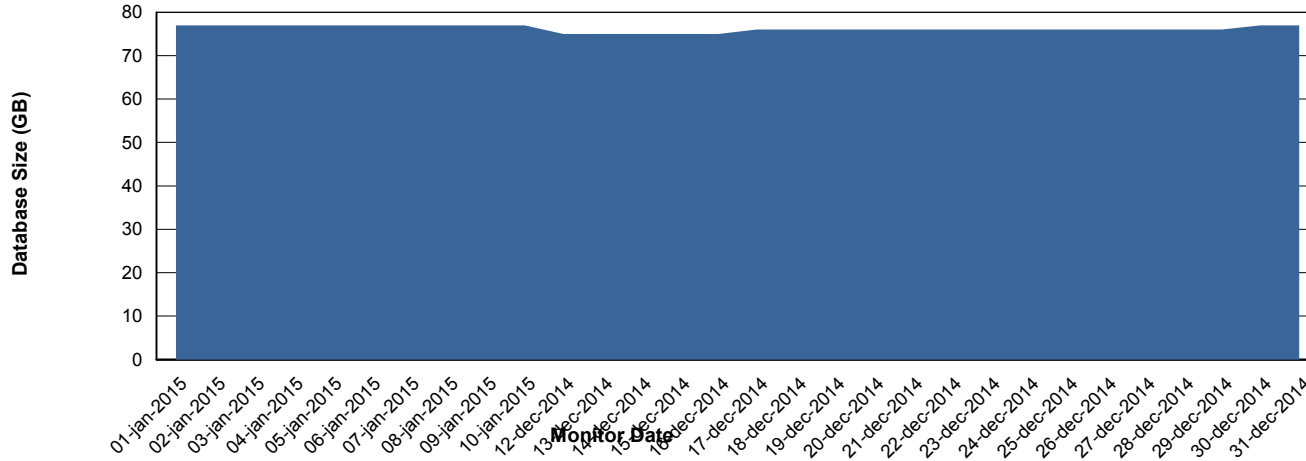
# Weekly SLA Customer Report

Customer RFL\_Production  
 Database ID 36



=====  
 DATABASE SIZE RFLDB\_Production  
 =====

## Database growth over last month



=====  
 DATABASE TABLESPACES RFLDB\_Production  
 =====

### TOTAL DATABASE SIZE PER TABLESPACE

Date	Tablespace Name	Filesize (Gb)	Usedsize (Gb)	Percentage free
10-1-2015	ABSDATA	28	19	32
	INDX	80	58	28
9-1-2015	ABSDATA	28	19	32
	INDX	80	58	28
8-1-2015	ABSDATA	28	19	32
	INDX	80	58	28
7-1-2015	ABSDATA	28	19	32
	INDX	80	57	29
6-1-2015	ABSDATA	28	19	32
	INDX	80	57	29
5-1-2015	ABSDATA	28	19	32
	INDX	80	57	29
4-1-2015	ABSDATA	28	19	32
	INDX	80	57	29

# Weekly SLA Customer Report

Customer RFL\_Production  
Database ID 36



=====  
STANDBY DATABASE HEALTH RFL\_Production  
=====

### Recovery lag for last 7 days

