

Weekly SLA Customer Report

Customer PCO Production
 Database ID 44



=====
 HARDDISK USAGE PCO_PRD_ORACLE1
 =====

	Total disk space on C (GB)	Free disk space on C (GB)	Total disk space on D (GB)	Free disk space on D (GB)
10-1-2015	279	217	838	221
9-1-2015	279	218	838	223
8-1-2015	279	218	838	226
7-1-2015	279	218	838	228
6-1-2015	279	218	838	231
5-1-2015	279	218	838	244
4-1-2015	279	218	838	252

=====
 HARDDISK USAGE PCO_PRD_ORACLE2
 =====

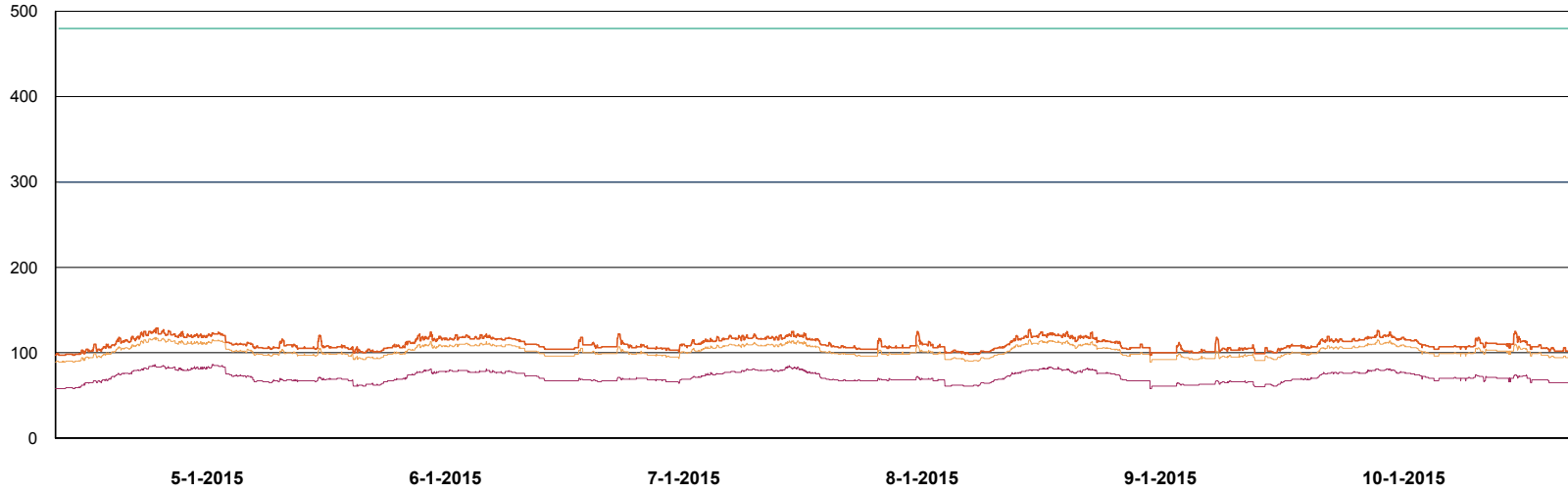
	Total disk space on C (GB)	Free disk space on C (GB)	Total disk space on D (GB)	Free disk space on D (GB)
10-1-2015	279	219	838	356
9-1-2015	279	220	838	358
8-1-2015	279	221	838	360
7-1-2015	279	221	838	363
6-1-2015	279	222	838	365
5-1-2015	279	221	838	379
4-1-2015	279	222	838	387

Weekly SLA Customer Report

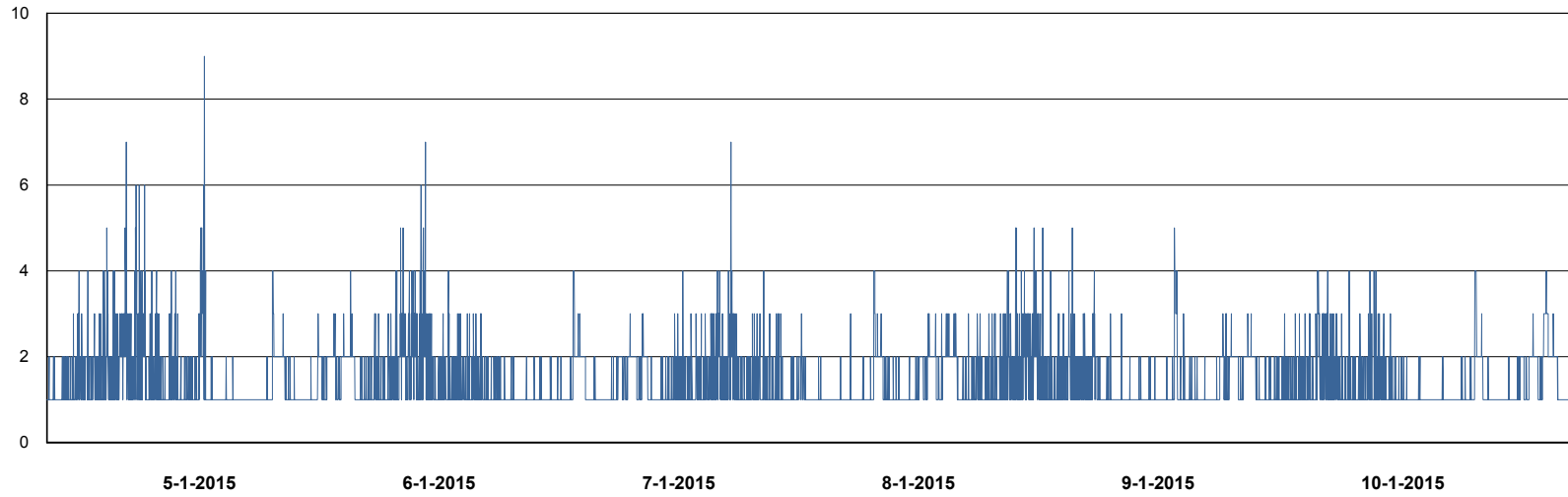
Customer PCO Production
Database ID 44



DATABASE PERFORMANCE PCODB_Production



- DB Processes Max
- DB Processes Used
- DB Sessions Max
- DB Sessions Used
- Users Connected



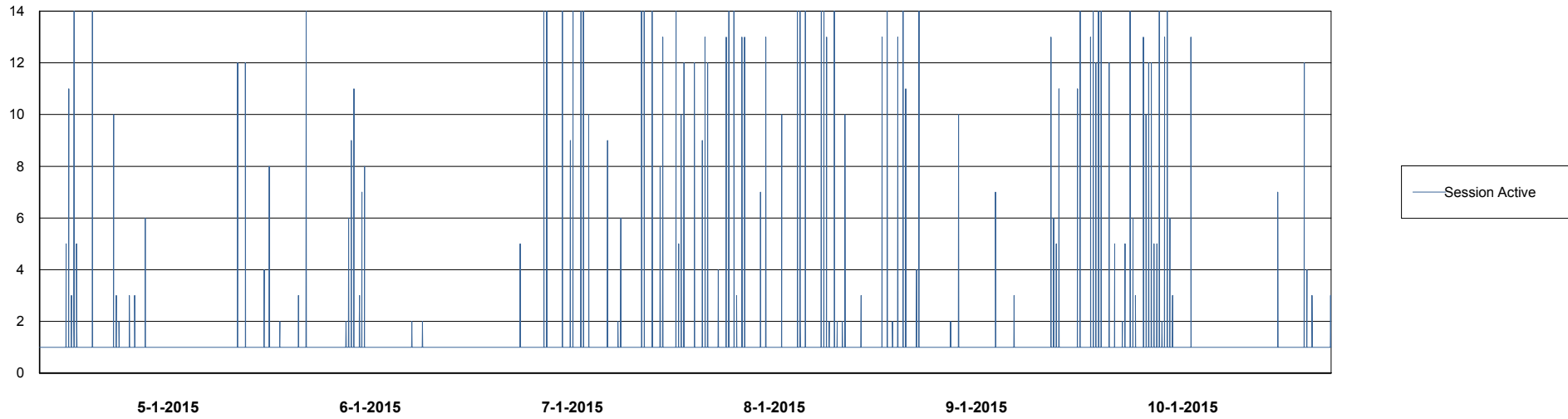
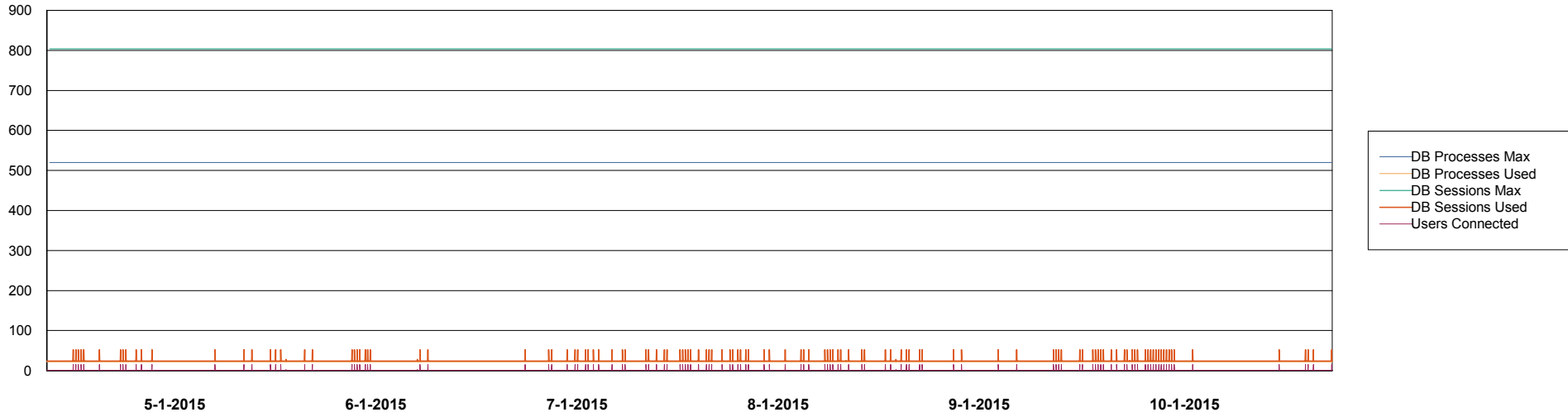
- Session Active

Weekly SLA Customer Report

Customer PCO Production
Database ID 44



DATABASE PERFORMANCE PCODB_Standby



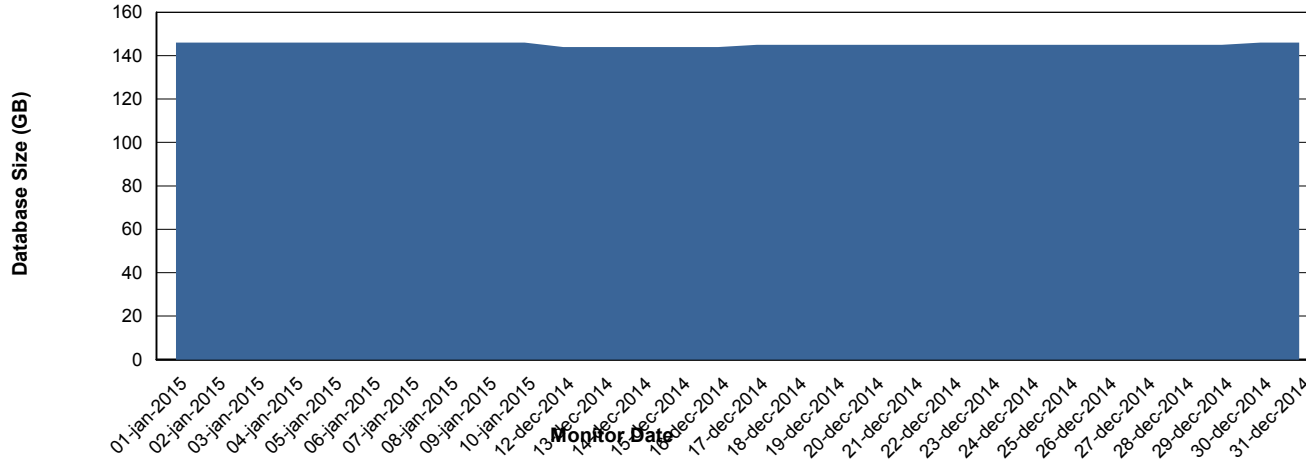
Weekly SLA Customer Report

Customer PCO Production
 Database ID 44



=====
 DATABASE SIZE PCODB_Production
 =====

Database growth over last month



=====
 DATABASE TABLESPACES PCODB_Production
 =====

TOTAL DATABASE SIZE PER TABLESPACE

Date	Tablespace Name	Filesize (Gb)	Usedsize (Gb)	Percentage free
10-1-2015	ABSDATA	78	60	23
	INDX	109	85	22
9-1-2015	ABSDATA	78	60	23
	INDX	109	85	22
8-1-2015	ABSDATA	78	60	23
	INDX	109	85	22
7-1-2015	ABSDATA	78	60	23
	INDX	109	85	22
6-1-2015	ABSDATA	78	60	23
	INDX	109	85	22
5-1-2015	ABSDATA	78	60	23
	INDX	109	85	22
4-1-2015	ABSDATA	72	60	17
	INDX	99	85	14

Weekly SLA Customer Report

Customer PCO Production
Database ID 44



=====
STANDBY DATABASE HEALTH PCO Production
=====

Recovery lag for last 7 days

