

# Weekly SLA Customer Report

Customer NIX\_Production  
Database ID 51



=====  
HARDDISK USAGE NIX\_PRD\_ABSAPP1  
=====

	Total disk space on C (GB)	Free disk space on C (GB)
10-1-2015	136	90
9-1-2015	136	90
8-1-2015	136	90
7-1-2015	136	90
6-1-2015	136	90
5-1-2015	136	90
4-1-2015	136	90

=====  
HARDDISK USAGE NIX\_PRD\_ABSWEB1  
=====

	Total disk space on C (GB)	Free disk space on C (GB)	Total disk space on D (GB)
10-1-2015	930	750	3
9-1-2015	930	751	3
8-1-2015	930	751	3
7-1-2015	930	751	3
6-1-2015	930	751	3
5-1-2015	930	751	3
4-1-2015	930	751	3

## Weekly SLA Customer Report

Customer      NIX\_Production  
 Database ID    51



=====  
 HARDDISK USAGE    NIX\_PRD\_ORACLE\_BI1  
 =====

	Total disk space on C (GB)	Free disk space on C (GB)	Total disk space on D (GB)	Free disk space on D (GB)	Total disk space on E (GB)	Free disk space on E (GB)
10-1-2015	99	55	279	169	99	30
9-1-2015	99	55	279	169	99	30
8-1-2015	99	55	279	169	99	29
7-1-2015	99	55	279	169	99	29
6-1-2015	99	54	279	169	99	30
5-1-2015	99	54	279	175	99	30
4-1-2015	99	54	279	179	99	30

=====  
 HARDDISK USAGE    NIX\_PRD\_ORCDB1  
 =====

	Total disk space on C (GB)	Free disk space on C (GB)	Total disk space on D (GB)	Free disk space on D (GB)	Total disk space on E (GB)	Free disk space on E (GB)
10-1-2015	136	68	136	27	136	51
9-1-2015	136	68	136	27	136	53
8-1-2015	136	68	136	27	136	54
7-1-2015	136	68	136	27	136	54
6-1-2015	136	68	136	27	136	54
5-1-2015	136	68	136	34	136	54
4-1-2015	136	68	136	39	136	53

# Weekly SLA Customer Report

Customer NIX\_Production  
Database ID 51



HARDDISK USAGE NIX\_PRD\_ORCDB2

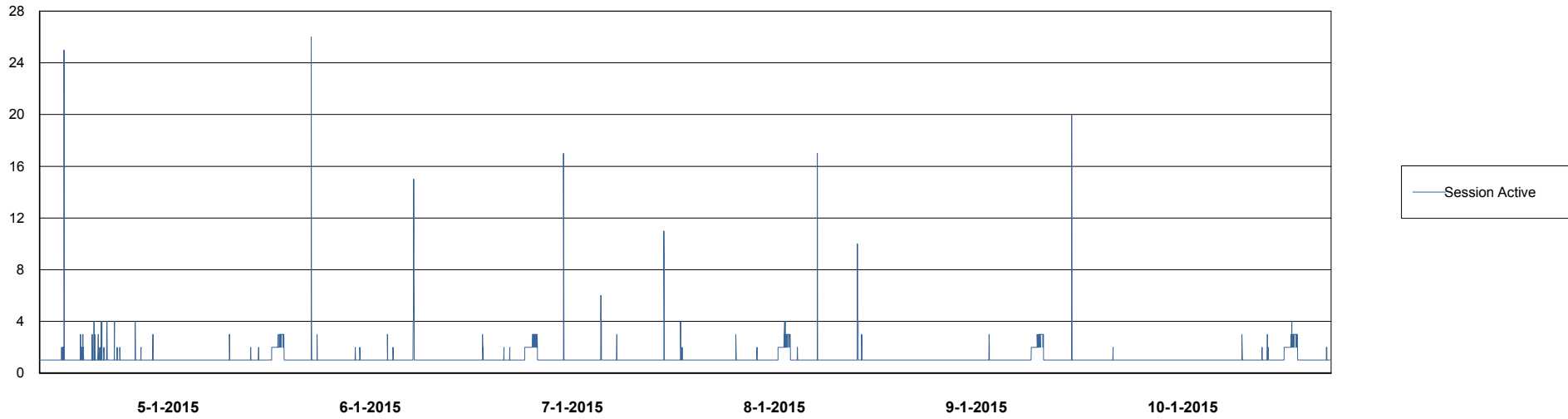
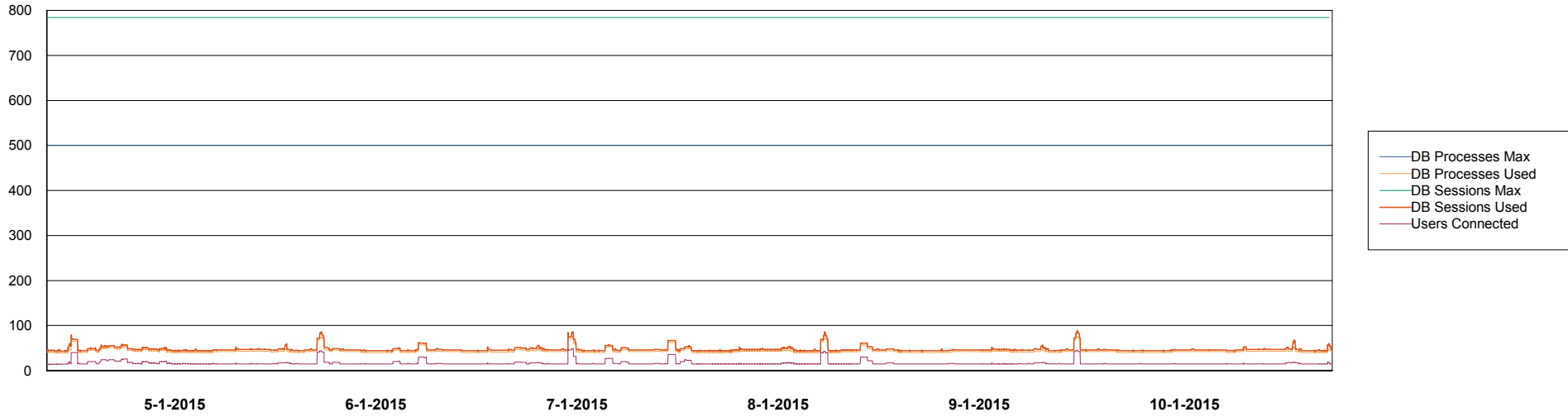
	Total disk space on C (GB)	Free disk space on C (GB)	Total disk space on D (GB)	Free disk space on D (GB)	Total disk space on E (GB)	Free disk space on E (GB)
10-1-2015	279	89	279	55	279	62
9-1-2015	279	89	279	55	279	90
8-1-2015	279	89	279	56	279	124
7-1-2015	279	89	279	55	279	104
6-1-2015	279	89	279	55	279	101
5-1-2015	279	89	279	63	279	106
4-1-2015	279	89	279	68	279	160

# Weekly SLA Customer Report

Customer NIX\_Production  
Database ID 51



DATABASE PERFORMANCE NIXDB\_BI

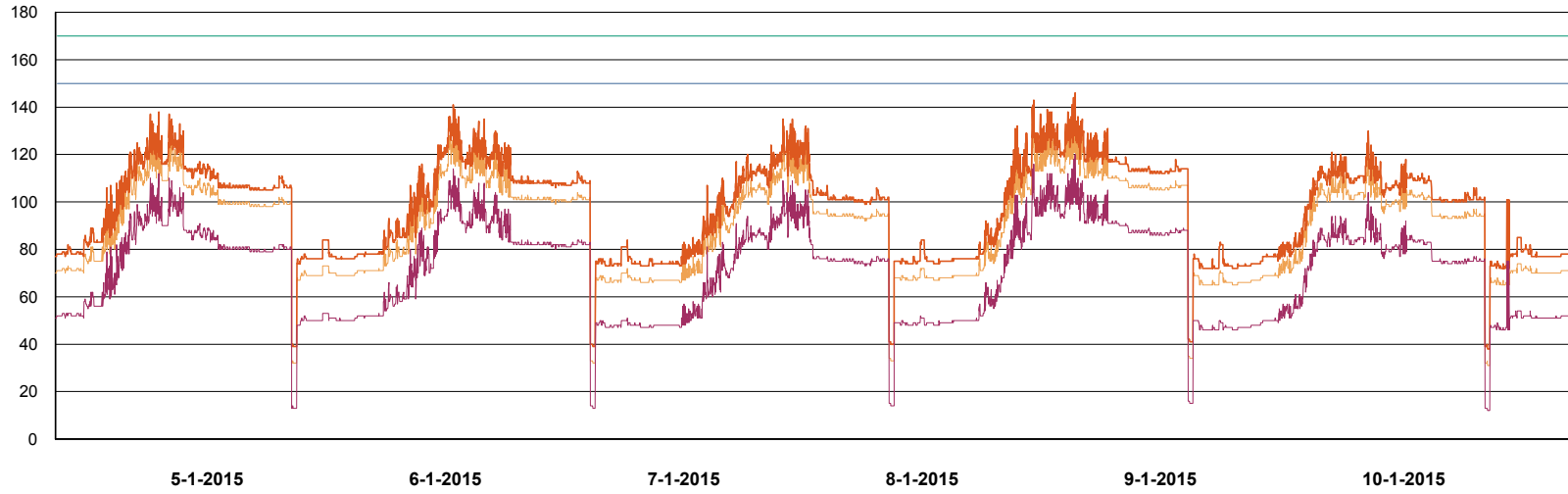


# Weekly SLA Customer Report

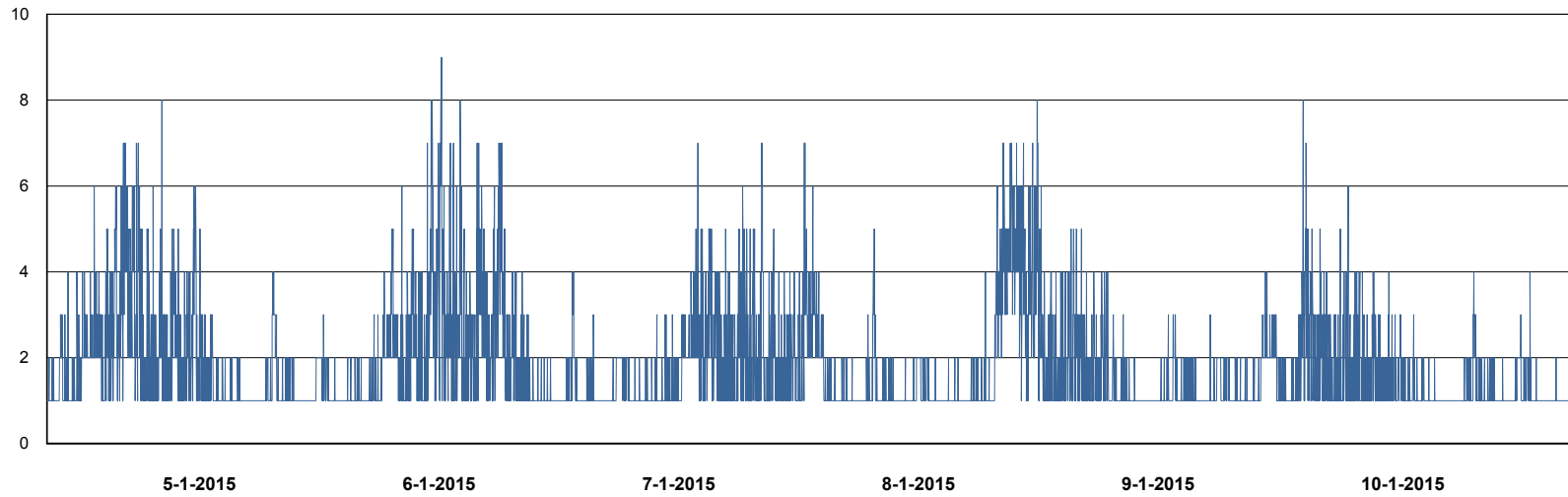
Customer NIX\_Production  
Database ID 51



DATABASE PERFORMANCE NIXDB\_Production



- DB Processes Max
- DB Processes Used
- DB Sessions Max
- DB Sessions Used
- Users Connected



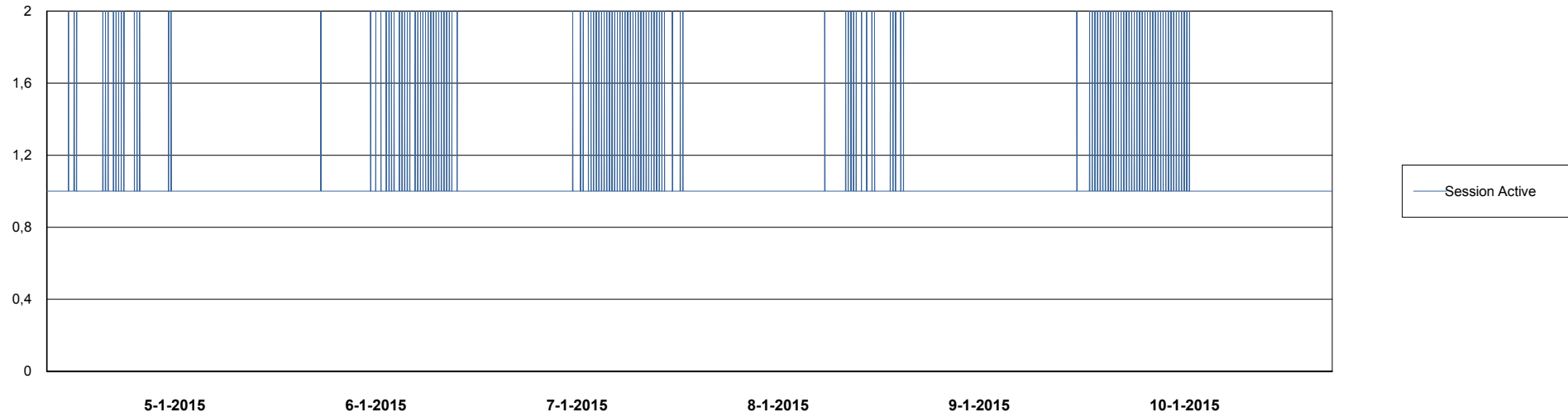
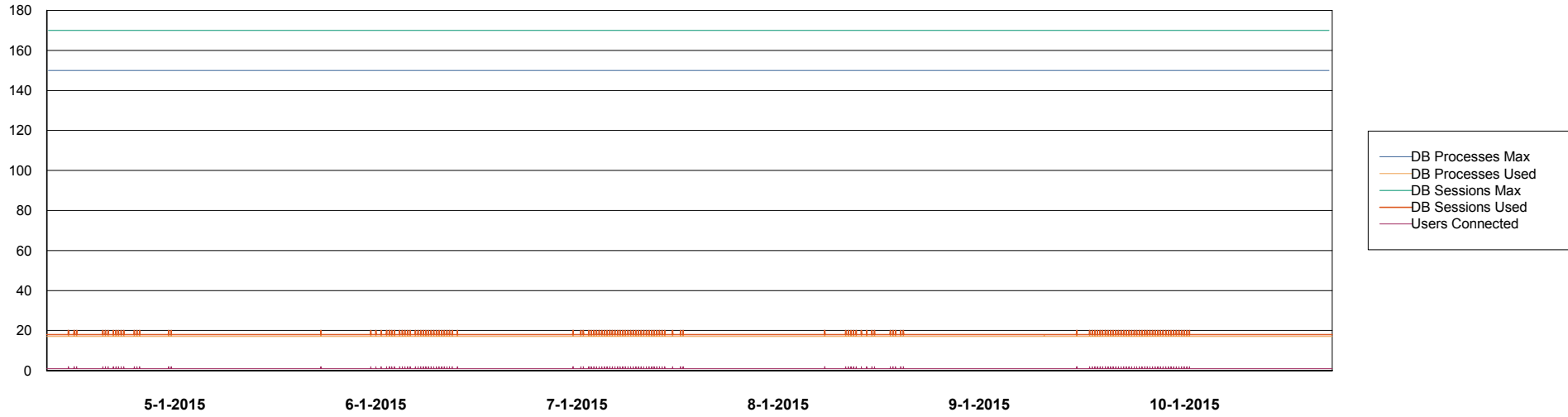
- Session Active

# Weekly SLA Customer Report

Customer NIX\_Production  
Database ID 51



DATABASE PERFORMANCE NIXDB\_Standby





# Weekly SLA Customer Report

Customer NIX\_Production  
 Database ID 51



=====  
 DATABASE TABLESPACES NIXDB\_BI  
 =====

TOTAL DATABASE SIZE PER TABLESPACE

Date	Tablespace Name	Filesize (Gb)	Usedsize (Gb)	Percentage free
10-1-2015	ABSDATA	28	19	32
	INDX	44	30	32
9-1-2015	ABSDATA	28	19	32
	INDX	44	30	32
8-1-2015	ABSDATA	28	19	32
	INDX	44	30	32
7-1-2015	ABSDATA	28	19	32
	INDX	44	30	32
6-1-2015	ABSDATA	28	19	32
	INDX	44	30	32
5-1-2015	ABSDATA	28	19	32
	INDX	44	30	32
4-1-2015	ABSDATA	22	19	14
	INDX	40	30	25

# Weekly SLA Customer Report

Customer NIX\_Production  
 Database ID 51



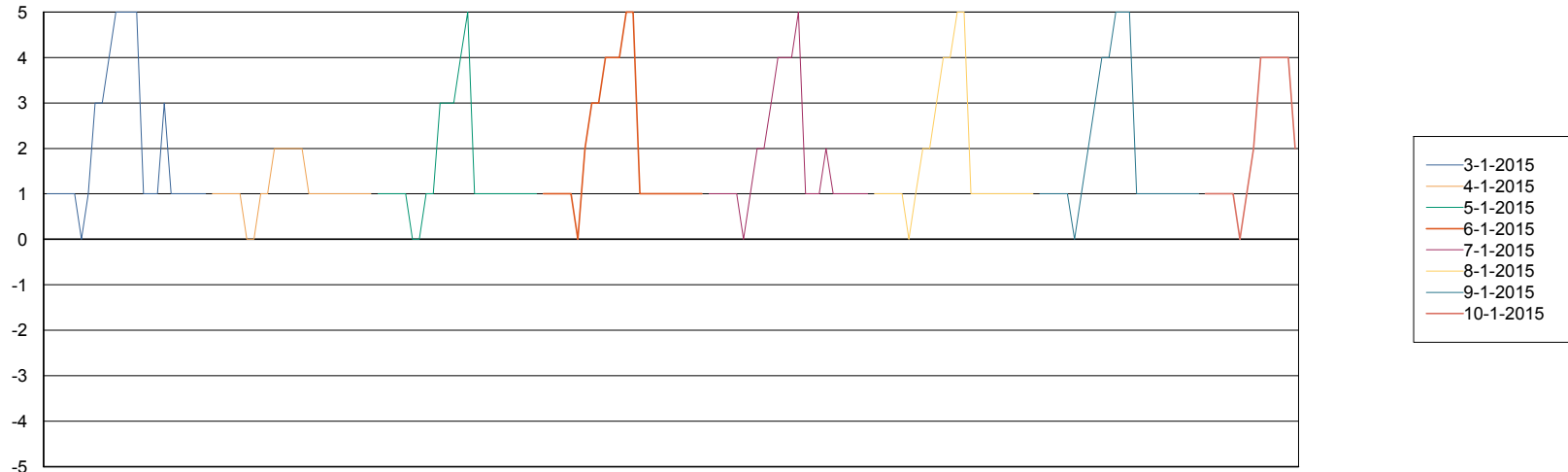
=====  
 DATABASE TABLESPACES NIXDB\_Production  
 =====

TOTAL DATABASE SIZE PER TABLESPACE

Date	Tablespace Name	Filesize (Gb)	Usedsize (Gb)	Percentage free
10-1-2015	ABSDATA	40	30	25
	INDX	109	83	24
9-1-2015	ABSDATA	40	30	25
	INDX	109	83	24
8-1-2015	ABSDATA	40	30	25
	INDX	109	83	24
7-1-2015	ABSDATA	40	30	25
	INDX	109	83	24
6-1-2015	ABSDATA	40	30	25
	INDX	109	83	24
5-1-2015	ABSDATA	40	30	25
	INDX	109	83	24
4-1-2015	ABSDATA	40	30	25
	INDX	97	83	14

=====  
 STANDBY DATABASE HEALTH NIX\_Production  
 =====

Recovery lag for last 7 days



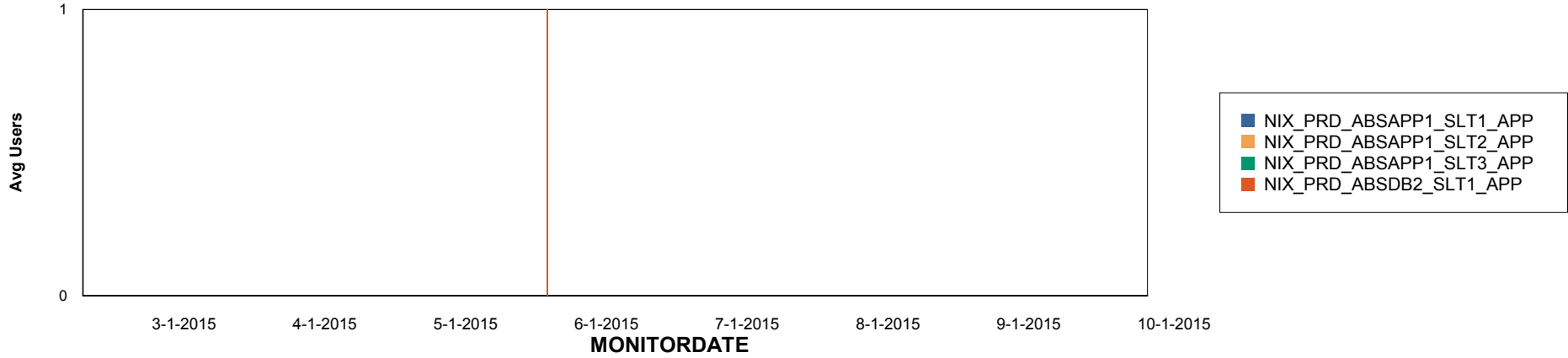
# Weekly SLA Customer Report

Customer NIX\_Production  
Database ID 51

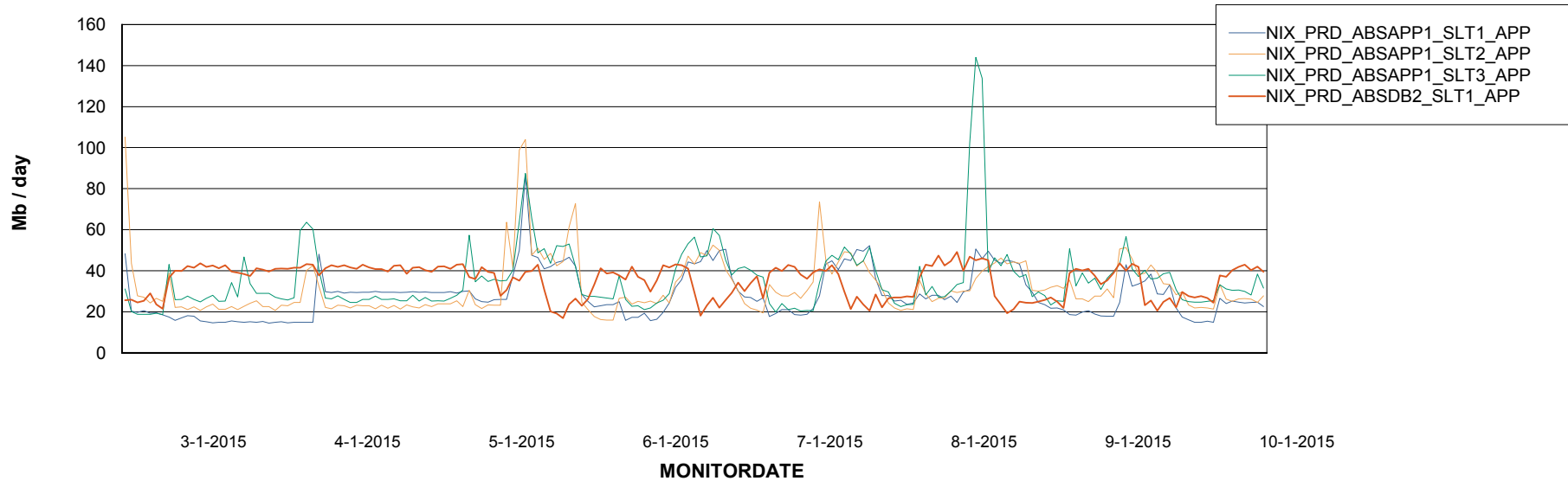


## ABSolute Application Server Services

### Disaster per ABS Server



### Avg memory used per ABS Server Service



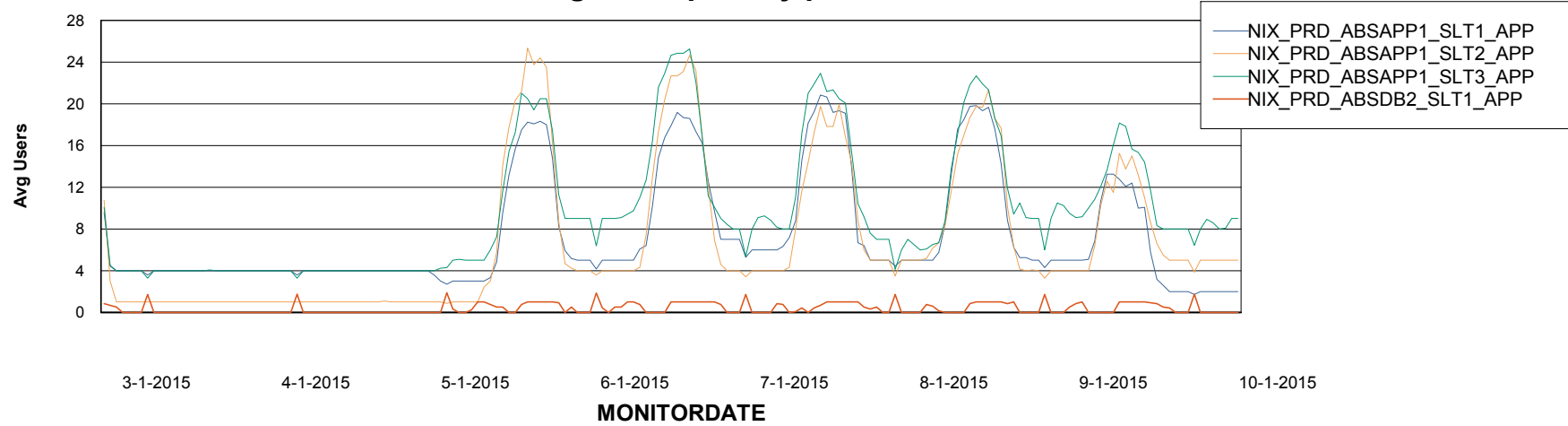
# Weekly SLA Customer Report

Customer NIX\_Production  
Database ID 51



=====  
ABSolute Application Server Services  
=====

### Avg users per day per ABS server



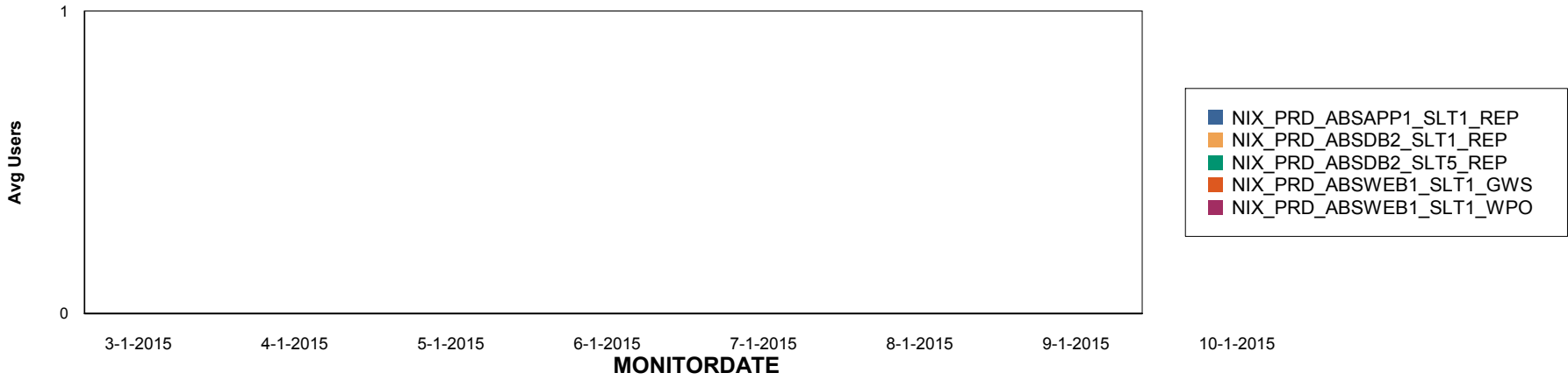
# Weekly SLA Customer Report

Customer NIX\_Production  
Database ID 51

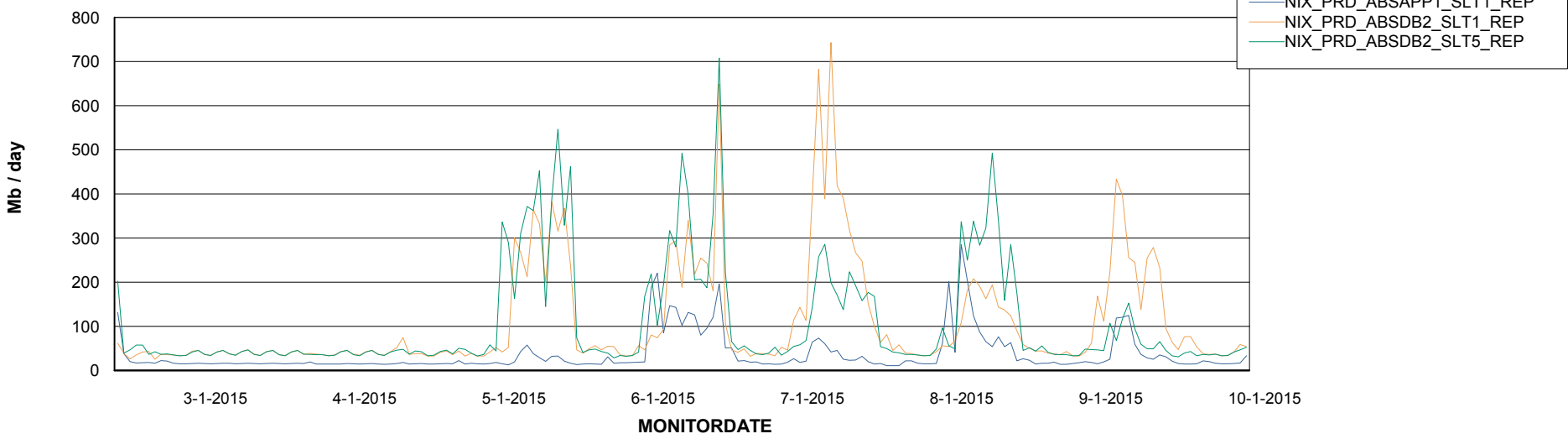


=====  
ABSolute Application ReportServer Services  
=====

## Disaster per ReportServer



## Avg memory used per ReportServer Service



# Weekly SLA Customer Report

Customer NIX\_Production  
Database ID 51



## Disaster per ABS component

