

Weekly SLA Customer Report

Customer LLG_Production
 Database ID 53



=====
 HARDDISK USAGE LLG_PRD_BI01
 =====

	Total disk space on C (GB)	Free disk space on C (GB)
10-1-2015	559	387
9-1-2015	559	387
8-1-2015	559	387
7-1-2015	559	387
6-1-2015	559	387
5-1-2015	559	387
4-1-2015	559	387

=====
 HARDDISK USAGE LLG_PRD_OR1
 =====

	Total disk space on C (GB)	Free disk space on C (GB)	Total disk space on D (GB)	Free disk space on D (GB)
10-1-2015	279	178	600	122
9-1-2015	279	178	600	129
8-1-2015	279	178	600	137
7-1-2015	279	178	600	145
6-1-2015	279	178	600	154
5-1-2015	279	178	600	127
4-1-2015	279	178	600	104

Weekly SLA Customer Report

Customer LLG_Production
 Database ID 53



=====
 HARDDISK USAGE LLG_PRD_OR2
 =====

	Total disk space on C (GB)	Free disk space on C (GB)	Total disk space on D (GB)	Free disk space on D (GB)
10-1-2015	293	248	545	318
9-1-2015	293	248	545	319
8-1-2015	293	248	545	320
7-1-2015	293	248	545	327
6-1-2015	293	248	545	330
5-1-2015	293	248	545	301
4-1-2015	293	248	545	267

=====
 HARDDISK USAGE LLG_PRD_vABS01
 =====

	Total disk space on C (GB)	Free disk space on C (GB)	Total disk space on D (GB)	Free disk space on D (GB)
10-1-2015	150	33	150	144
9-1-2015	150	34	150	144
8-1-2015	150	36	150	144
7-1-2015	150	36	150	145
6-1-2015	150	36	150	145
5-1-2015	150	36	150	145
4-1-2015	150	36	150	145

Weekly SLA Customer Report

Customer LLG_Production
Database ID 53



HARDDISK USAGE LLG_PRD_vABS02

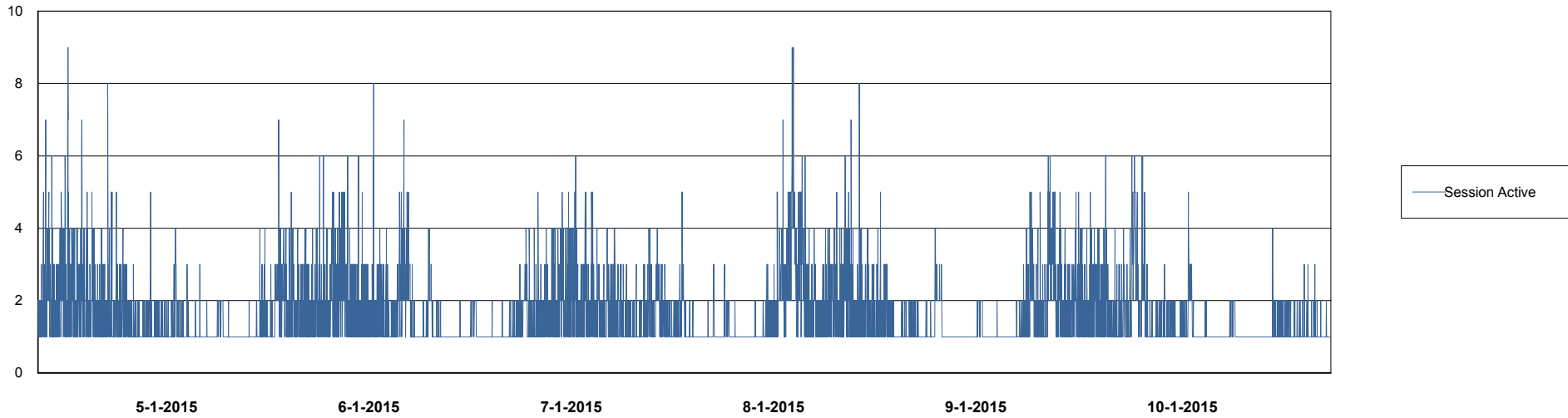
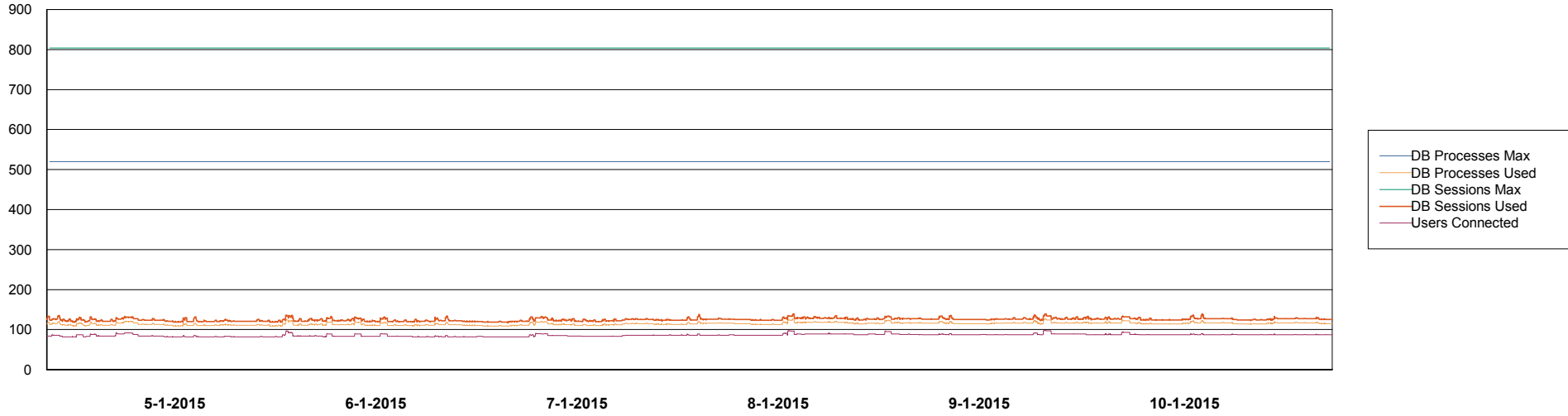
	Total disk space on C (GB)	Free disk space on C (GB)	Total disk space on D (GB)	Free disk space on D (GB)
10-1-2015	150	63	150	126
9-1-2015	150	64	150	126
8-1-2015	150	65	150	126
7-1-2015	150	65	150	126
6-1-2015	150	65	150	126
5-1-2015	150	65	150	126
4-1-2015	150	65	150	126

Weekly SLA Customer Report

Customer LLG_Production
Database ID 53



DATABASE PERFORMANCE LLGDB_Production

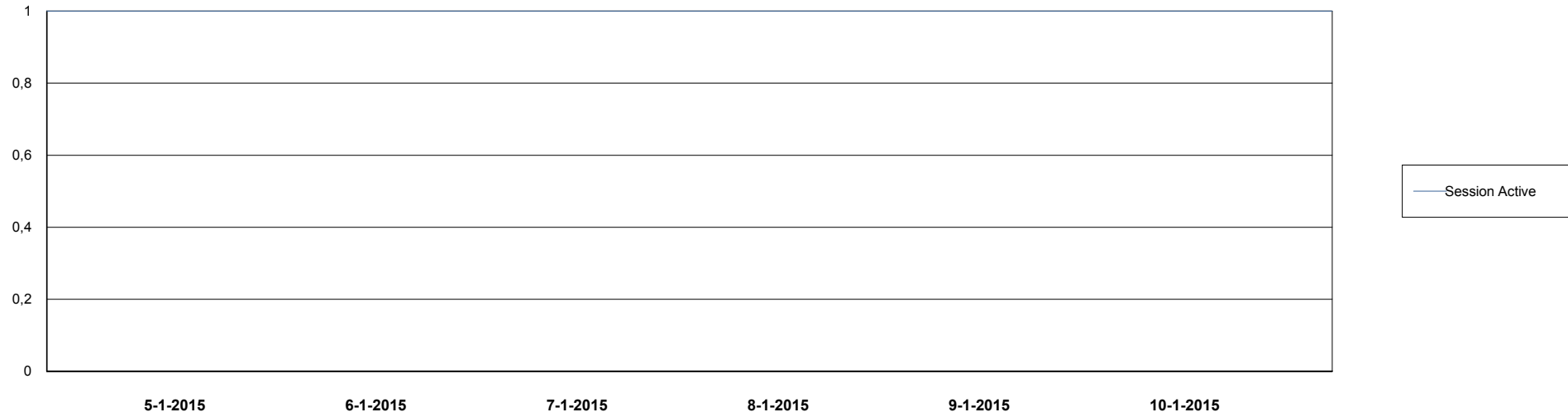
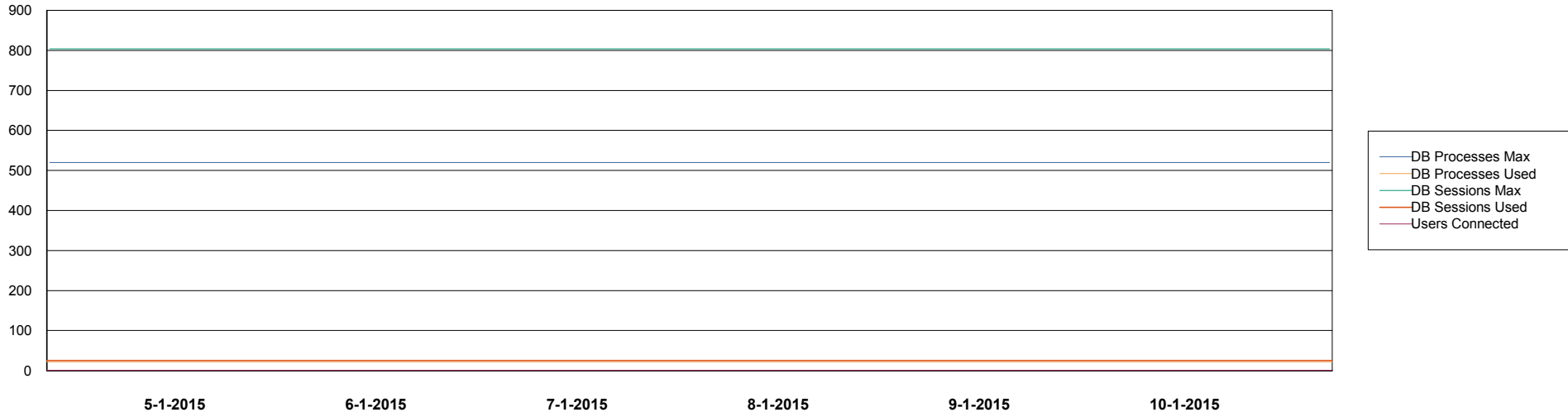


Weekly SLA Customer Report

Customer LLG_Production
Database ID 53



DATABASE PERFORMANCE LLGDB_Standby



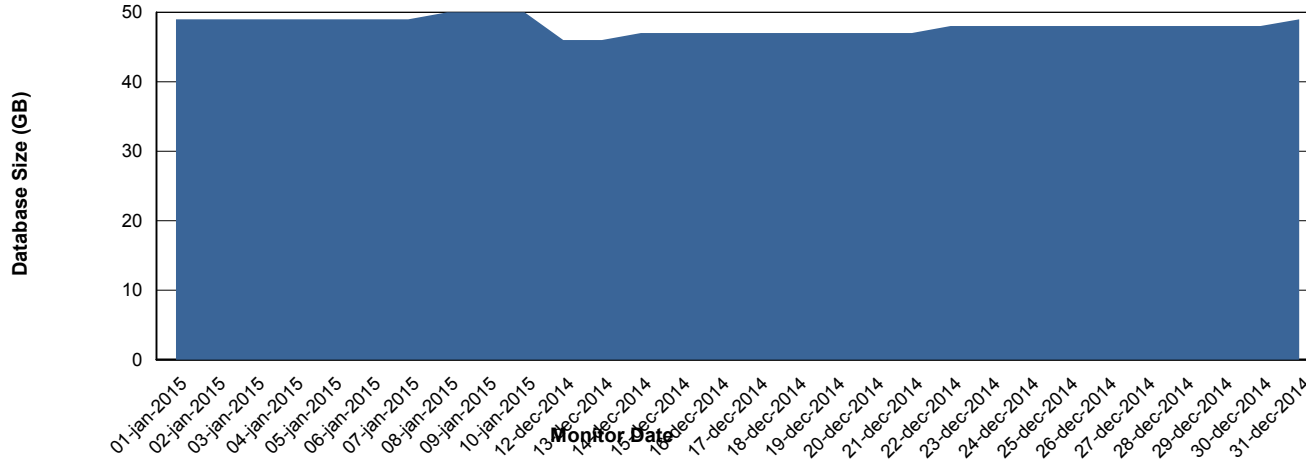
Weekly SLA Customer Report

Customer LLG_Production
 Database ID 53



=====
 DATABASE SIZE LLGDB_Production
 =====

Database growth over last month



=====
 DATABASE TABLESPACES LLGDB_Production
 =====

TOTAL DATABASE SIZE PER TABLESPACE

Date	Tablespace Name	Filesize (Gb)	Usedsize (Gb)	Percentage free
10-1-2015	ABSDATA	20	17	15
	INDX	40	30	25
9-1-2015	ABSDATA	20	17	15
	INDX	40	30	25
8-1-2015	ABSDATA	20	17	15
	INDX	40	30	25
7-1-2015	ABSDATA	20	17	15
	INDX	40	30	25
6-1-2015	ABSDATA	20	17	15
	INDX	40	30	25
5-1-2015	ABSDATA	20	17	15
	INDX	40	30	25
4-1-2015	ABSDATA	20	17	15
	INDX	40	29	28

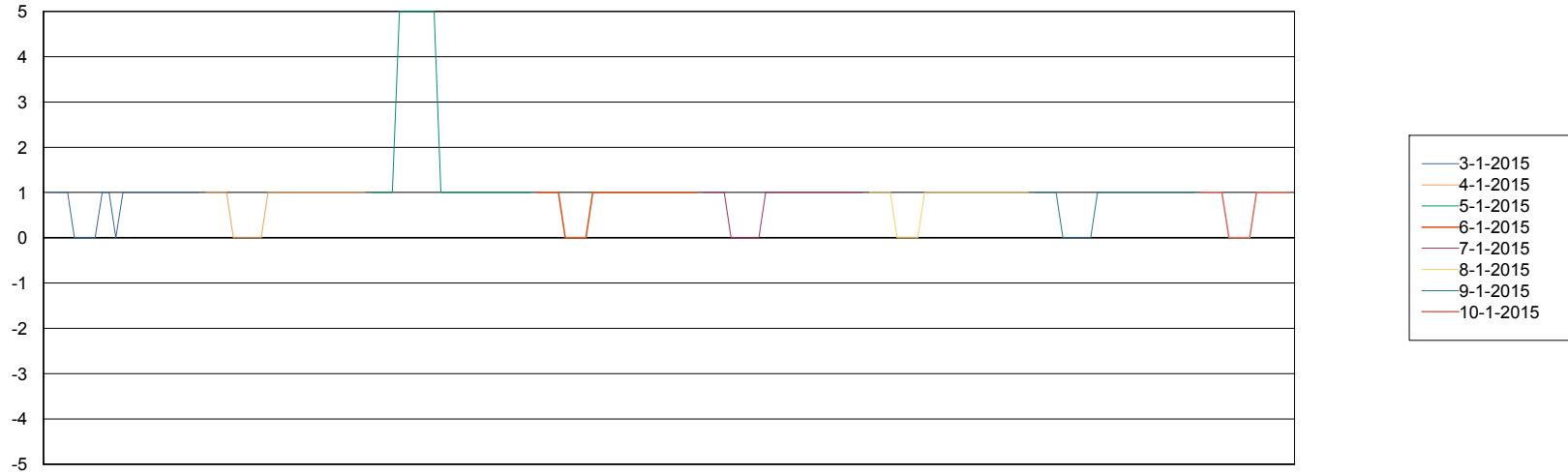
Weekly SLA Customer Report

Customer LLG_Production
Database ID 53



=====
STANDBY DATABASE HEALTH LLG_Production
=====

Recovery lag for last 7 days



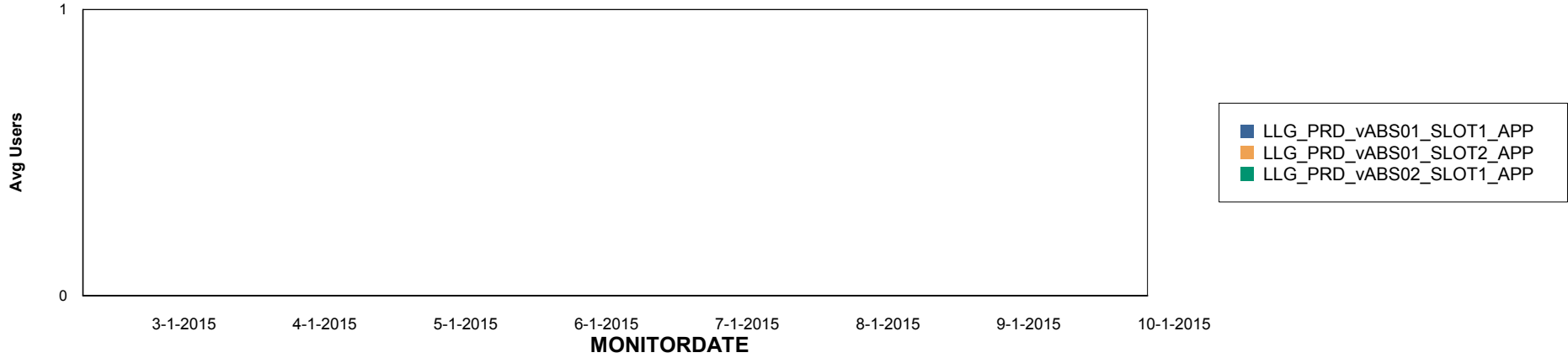
Weekly SLA Customer Report

Customer LLG_Production
Database ID 53

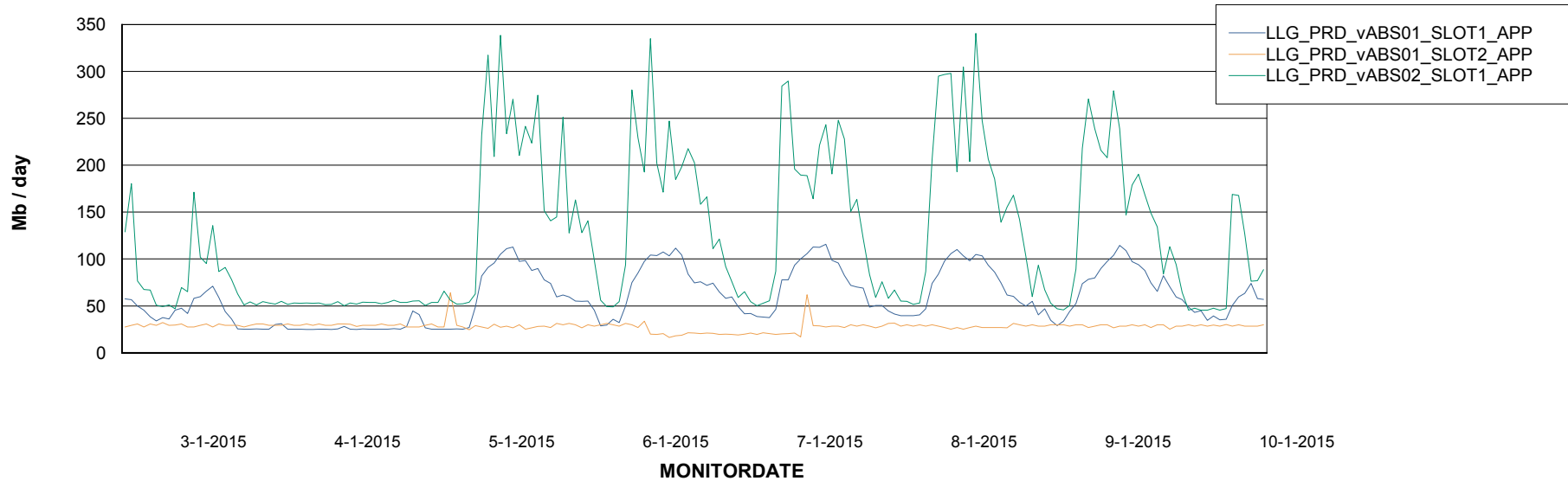


=====
ABSolute Application Server Services
=====

Disaster per ABS Server



Avg memory used per ABS Server Service



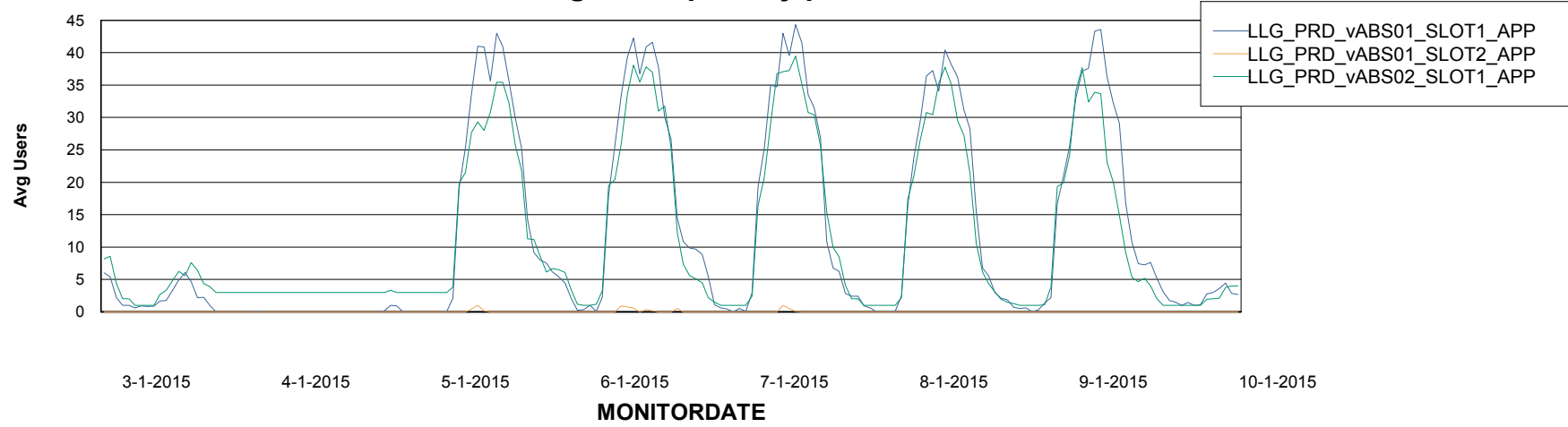
Weekly SLA Customer Report

Customer LLG_Production
Database ID 53



=====
ABSolute Application Server Services
=====

Avg users per day per ABS server



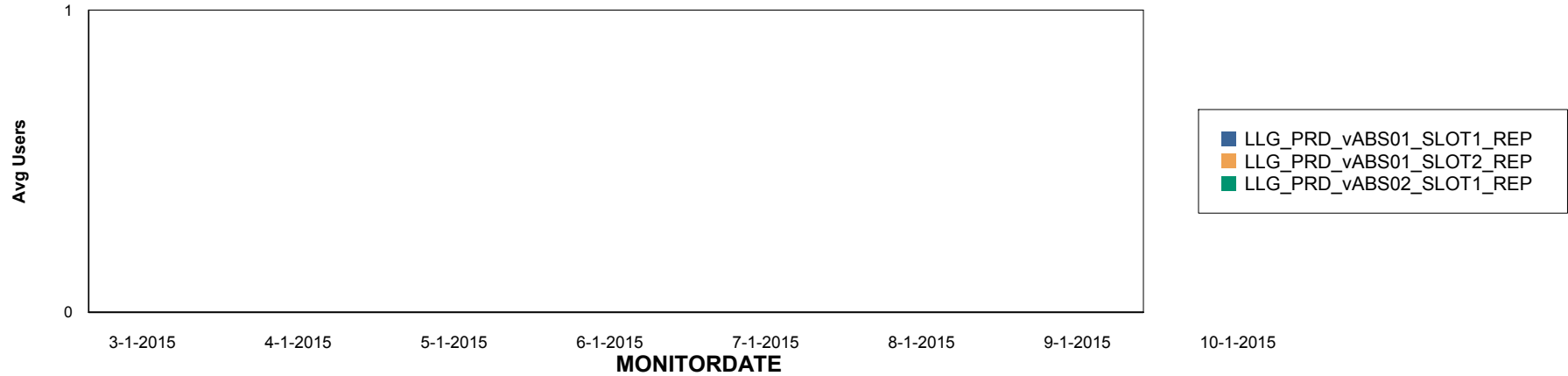
Weekly SLA Customer Report

Customer LLG_Production
Database ID 53

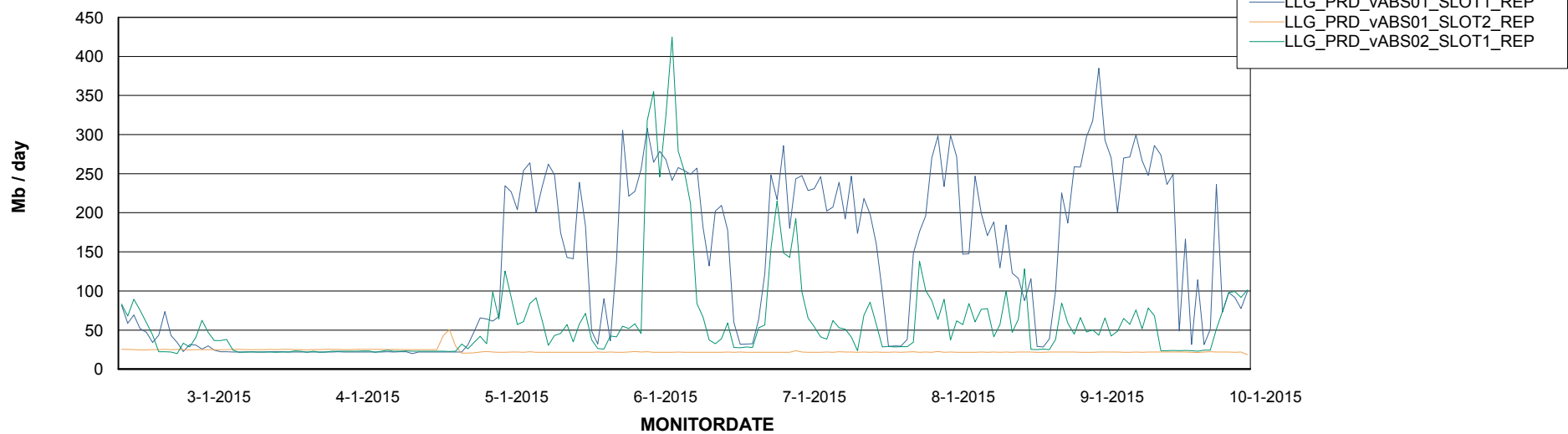


=====
ABSolute Application ReportServer Services
=====

Disaster per ReportServer



Avg memory used per ReportServer Service



Weekly SLA Customer Report

Customer LLG_Production
Database ID 53



Disaster per ABS component

